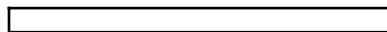


1 IPA2424
RCP VIEW - 24" X 24" PANEL
SCALE: 1" = 1'-0"



2 IPA2424
ELEVATION
SCALE: 1" = 1'-0"

3 IPA2424
SECTION @ PANEL WIDTH
SCALE: 1" = 1'-0"

4 IPA2424
SECTION @ PANEL LENGTH
SCALE: 1" = 1'-0"



USG Corporation
550 W Adams Street
Chicago, IL 60661 USA
www.usg.com



Ceilings Plus®
6711 E. Washington Boulevard Los
Angeles, California 90040
Tel: 800-822-3411

USG Ceilings Plus®
Design Solutions - ILLUSIONS®
Quick Ship Formed Metal Panels

ISSUE RECORD:

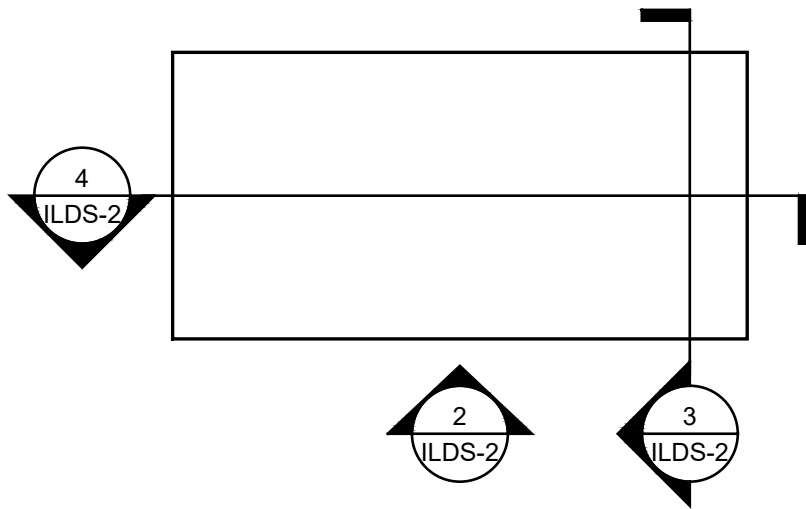
REV:	DATE:
00	03/16/2023
00	DD/MM/YYYY
00	DD/MM/YYYY
00	DD/MM/YYYY

SHEET INFORMATION:

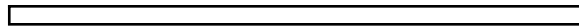
DESIGN SOLUTIONS
ILLUSIONS®

IPA2424

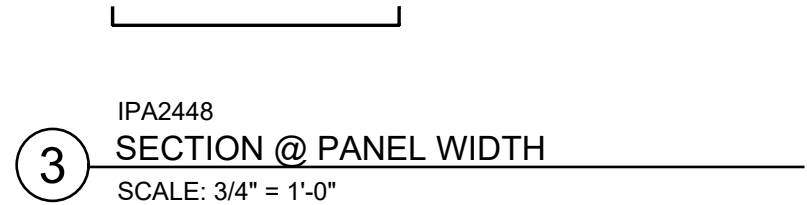
USG CEILINGS PLUS® 2021 The USG Product Specifications contained herein are intended for use as product reference material by architects, engineers, contractors, building code officials, or other competent construction industry professionals having an interest in the selection, specification, and use of products manufactured by USG Corporation and its subsidiaries. These Specifications are intended solely as technical support incident to the sale and use of USG products and not intended to be a substitute for the review and approval of the licensed design professionals for the project. These materials may be printed and/or transferred electronically solely as needed by the user. Because electronic CAD & BIM files can be modified by other parties without notice or indication, any alteration of such files and their contents become the responsibility and liability of the design professionals for the project.



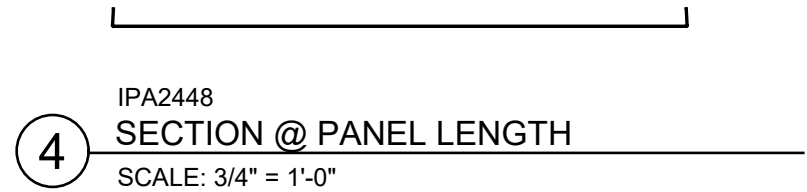
1 IPA2448
RCP VIEW - 24" X 48" PANEL
SCALE: 3/4" = 1'-0"



2 IPA2448
ELEVATION
SCALE: 3/4" = 1'-0"



3 IPA2448
SECTION @ PANEL WIDTH
SCALE: 3/4" = 1'-0"



4 IPA2448
SECTION @ PANEL LENGTH
SCALE: 3/4" = 1'-0"



USG Corporation
550 W Adams Street
Chicago, IL 60661 USA
www.usg.com



Ceilings Plus®
6711 E. Washington Boulevard Los
Angeles, California 90040
Tel: 800-822-3411

USG Ceilings Plus®
Design Solutions - ILLUSIONS®
Quick Ship Formed Metal Panels

ISSUE RECORD:

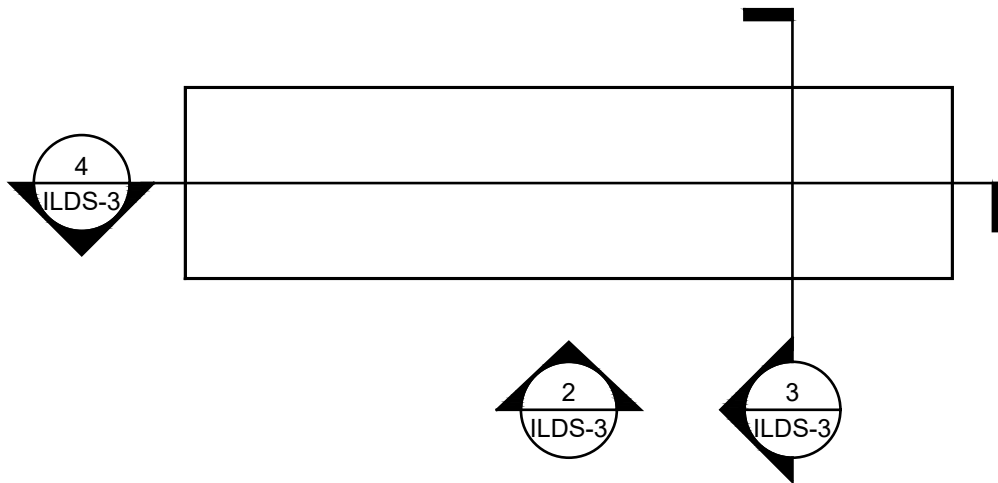
REV:	DATE:
00	03/16/2023
00	DD/MM/YYYY
00	DD/MM/YYYY
00	DD/MM/YYYY

SHEET INFORMATION:

DESIGN SOLUTIONS
ILLUSIONS®

IPA2448

USG CEILINGS PLUS® 2021 The USG Product Specifications contained herein are intended for use as product reference material by architects, engineers, contractors, building code officials, or other competent construction industry professionals having an interest in the selection, specification, and use of products manufactured by USG Corporation and its subsidiaries. These Specifications are intended solely as technical support incident to the sale and use of USG products and not intended to be a substitute for the review and approval of the licensed design professionals for the project. These materials may be printed and/or transferred electronically solely as needed by the user. Because electronic CAD & BIM files can be modified by other parties without notice or indication, any alteration of such files and their contents become the responsibility and liability of the design professionals for the project.



1 IPA2496
RCP VIEW - 24" X 96" PANEL
SCALE: 1/2" = 1'-0"

2 IPA2496
ELEVATION
SCALE: 1/2" = 1'-0"

3 IPA2496
SECTION @ PANEL WIDTH
SCALE: 1/2" = 1'-0"

4 IPA2496
SECTION @ PANEL LENGTH
SCALE: 1/2" = 1'-0"



USG Corporation
550 W Adams Street
Chicago, IL 60661 USA
www.usg.com



Ceilings Plus®
6711 E. Washington Boulevard Los
Angeles, California 90040
Tel: 800-822-3411

USG Ceilings Plus®
Design Solutions - ILLUSIONS®
Quick Ship Formed Metal Panels

ISSUE RECORD:

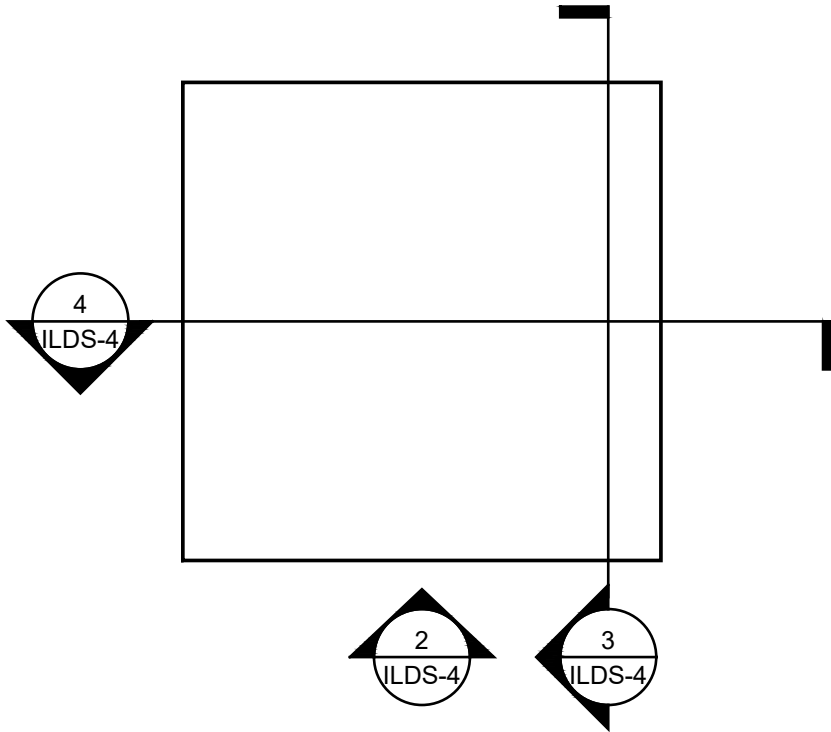
REV:	DATE:
00	03/16/2023
00	DD/MM/YYYY
00	DD/MM/YYYY
00	DD/MM/YYYY

SHEET INFORMATION:

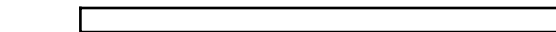
DESIGN SOLUTIONS
ILLUSIONS®

IPA2496

USG CEILINGS PLUS® 2021 The USG Product Specifications contained herein are intended for use as product reference material by architects, engineers, contractors, building code officials, or other competent construction industry professionals having an interest in the selection, specification, and use of products manufactured by USG Corporation and its subsidiaries. These Specifications are intended solely as technical support incident to the sale and use of USG products and not intended to be a substitute for the review and approval of the licensed design professionals for the project. These materials may be printed and/or transferred electronically solely as needed by the user. Because electronic CAD & BIM files can be modified by other parties without notice or indication, any alteration of such files and their contents become the responsibility and liability of the design professionals for the project.



1 IPA3030
RCP VIEW - 30" X 30" PANEL
SCALE: 1" = 1'-0"



2 IPA3030
ELEVATION
SCALE: 1" = 1'-0"

3 IPA3030
SECTION @ PANEL WIDTH
SCALE: 1" = 1'-0"

4 IPA3030
SECTION @ PANEL LENGTH
SCALE: 1" = 1'-0"



USG Corporation
550 W Adams Street
Chicago, IL 60661 USA
www.usg.com

CEILINGSPUS®

Ceilings Plus®
6711 E. Washington Boulevard Los
Angeles, California 90040
Tel: 800-822-3411

USG Ceilings Plus®
Design Solutions - ILLUSIONS®
Quick Ship Formed Metal Panels

ISSUE RECORD:

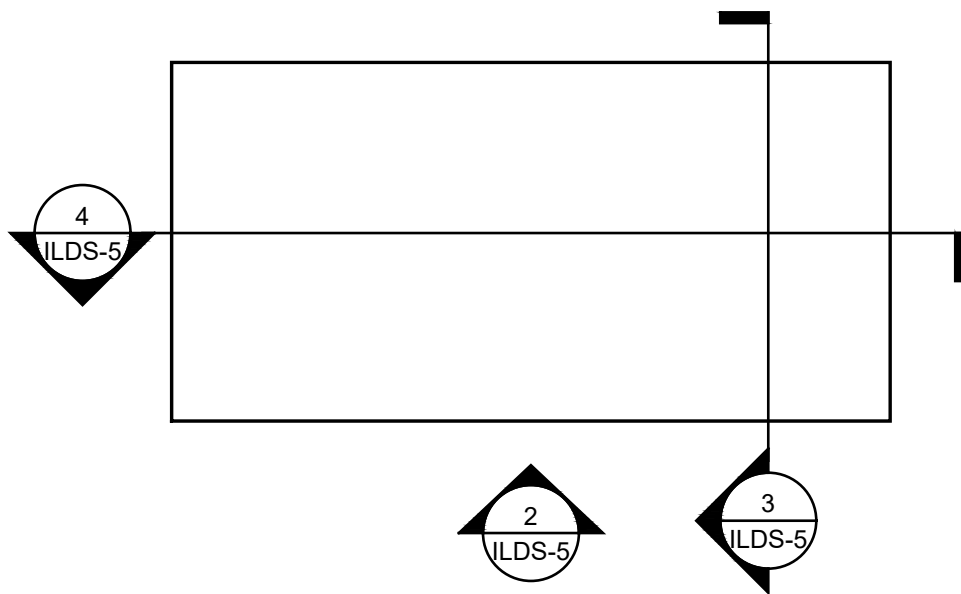
REV:	DATE:
00	03/16/2023
00	DD/MM/YYYY
00	DD/MM/YYYY
00	DD/MM/YYYY

SHEET INFORMATION:

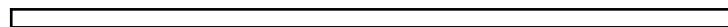
DESIGN SOLUTIONS
ILLUSIONS®

IPA3030

USG CEILINGS PLUS® 2021 The USG Product Specifications contained herein are intended for use as product reference material by architects, engineers, contractors, building code officials, or other competent construction industry professionals having an interest in the selection, specification, and use of products manufactured by USG Corporation and its subsidiaries. These Specifications are intended solely as technical support incident to the sale and use of USG products and not intended to be a substitute for the review and approval of the licensed design professionals for the project. These materials may be printed and/or transferred electronically solely as needed by the user. Because electronic CAD & BIM files can be modified by other parties without notice or indication, any alteration of such files and their contents become the responsibility and liability of the design professionals for the project.



1 IPA3060
RCP VIEW - 30" X 60" PANEL
SCALE: 3/4" = 1'-0"



2 IPA3060
ELEVATION
SCALE: 3/4" = 1'-0"

3 IPA3060
SECTION @ PANEL WIDTH
SCALE: 3/4" = 1'-0"

4 IPA3060
SECTION @ PANEL LENGTH
SCALE: 3/4" = 1'-0"



USG Corporation
550 W Adams Street
Chicago, IL 60661 USA
www.usg.com



Ceilings Plus®
6711 E. Washington Boulevard Los
Angeles, California 90040
Tel: 800-822-3411

USG Ceilings Plus®
Design Solutions - ILLUSIONS®
Quick Ship Formed Metal Panels

ISSUE RECORD:

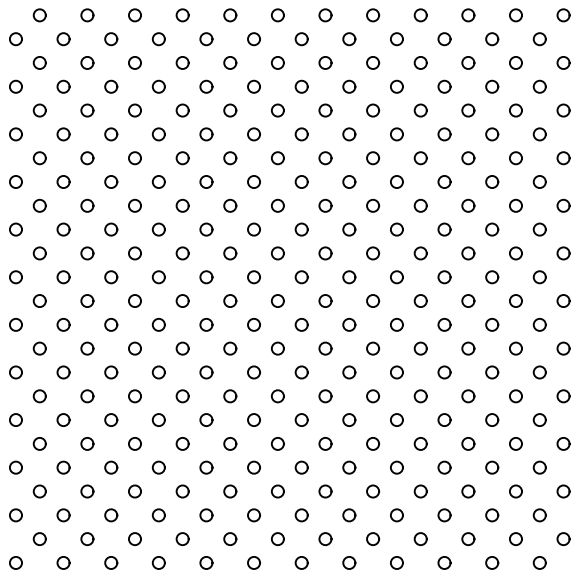
REV:	DATE:
00	03/16/2023
00	DD/MM/YYYY
00	DD/MM/YYYY
00	DD/MM/YYYY

SHEET INFORMATION:

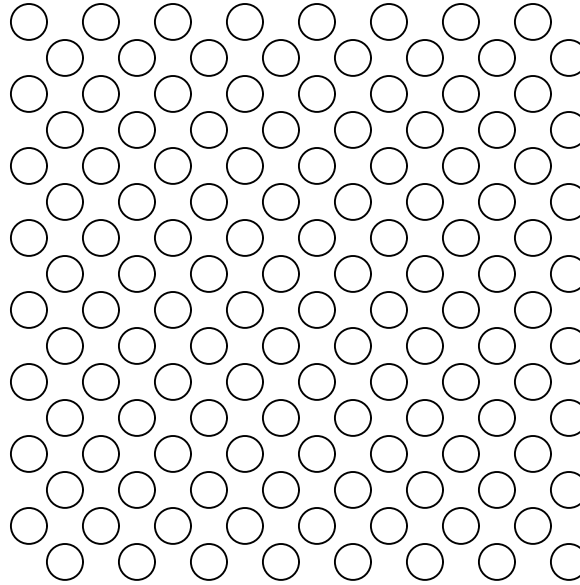
DESIGN SOLUTIONS
ILLUSIONS®

IPA3060

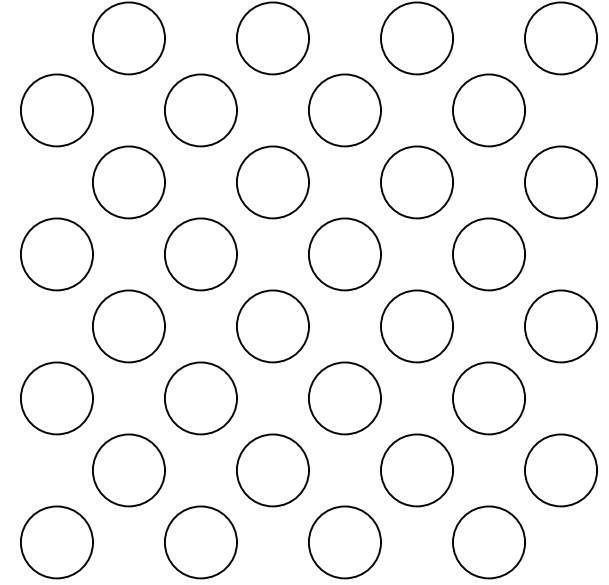
USG CEILINGS PLUS® 2021 The USG Product Specifications contained herein are intended for use as product reference material by architects, engineers, contractors, building code officials, or other competent construction industry professionals having an interest in the selection, specification, and use of products manufactured by USG Corporation and its subsidiaries. These Specifications are intended solely as technical support incident to the sale and use of USG products and not intended to be a substitute for the review and approval of the licensed design professionals for the project. These materials may be printed and/or transferred electronically solely as needed by the user. Because electronic CAD & BIM files can be modified by other parties without notice or indication, any alteration of such files and their contents become the responsibility and liability of the design professionals for the project.



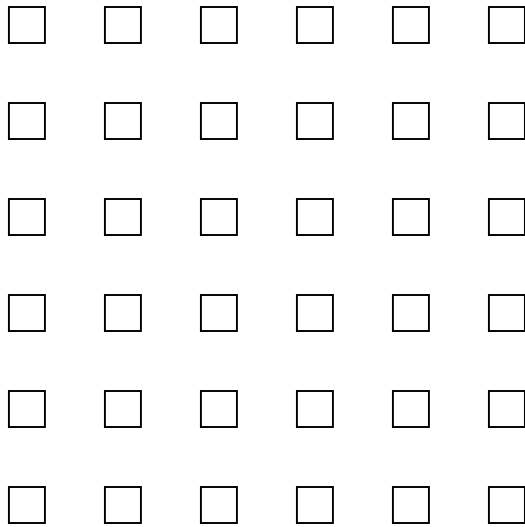
CD06310 10% OPEN



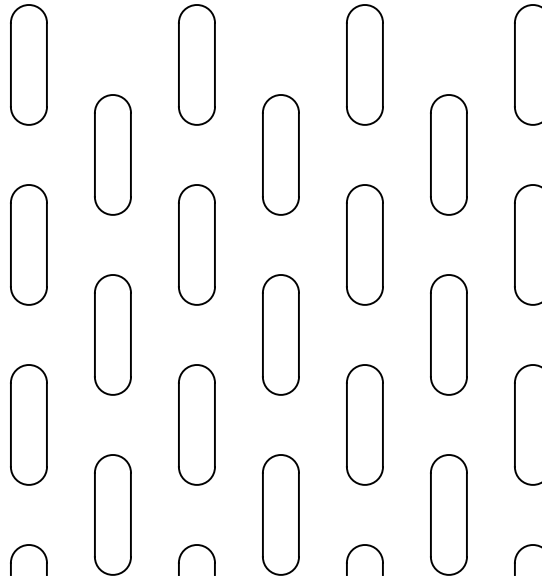
CD18839 39% OPEN



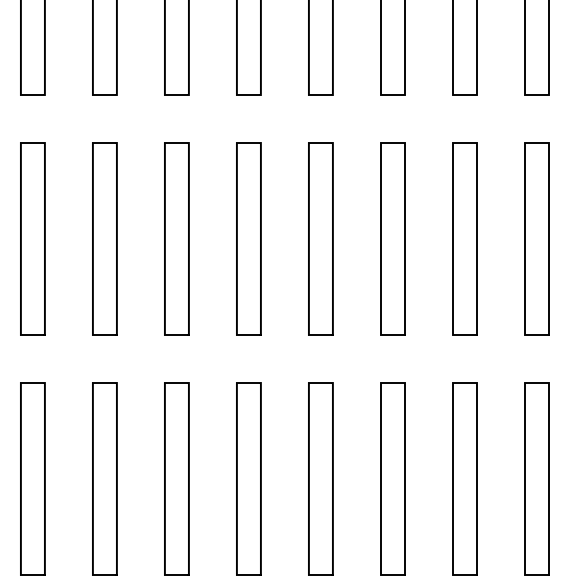
CD37539 39% OPEN



SS18814 14% OPEN



OD18827 27% OPEN



RS12527 27% OPEN



USG Corporation
550 W Adams Street
Chicago, IL 60661 USA
www.usg.com

CEILINGSPUS®

Ceilings Plus®
6711 E. Washington Boulevard Los
Angeles, California 90040
Tel: 800-822-3411

USG Ceilings Plus®
Design Solutions - ILLUSIONS®
SAMPLE PERFORATIONS - 1:1 [FULL SCALE]

ISSUE RECORD:

REV: DATE:
00 03/16/2023
00 DD/MM/YYYY
00 DD/MM/YYYY
00 DD/MM/YYYY

SHEET INFORMATION:

**DESIGN SOLUTIONS
ILLUSIONS®**

PERF-01

USG CEILINGSPUS® 2021 The USG Product Specifications contained herein are intended for use as product reference material by architects, engineers, contractors, building code officials, or other competent construction industry professionals having an interest in the selection, specification, and use of products manufactured by USG Corporation and its subsidiaries. These Specifications are intended solely as technical support incident to the sale and use of USG products and not intended to be a substitute for the review and approval of the licensed design professionals for the project. These materials may be printed and/or transferred electronically solely as needed by the user. Because electronic CAD & BIM files can be modified by other parties without notice or indication, any alteration of such files and their contents become the responsibility and liability of the design professionals for the project.