

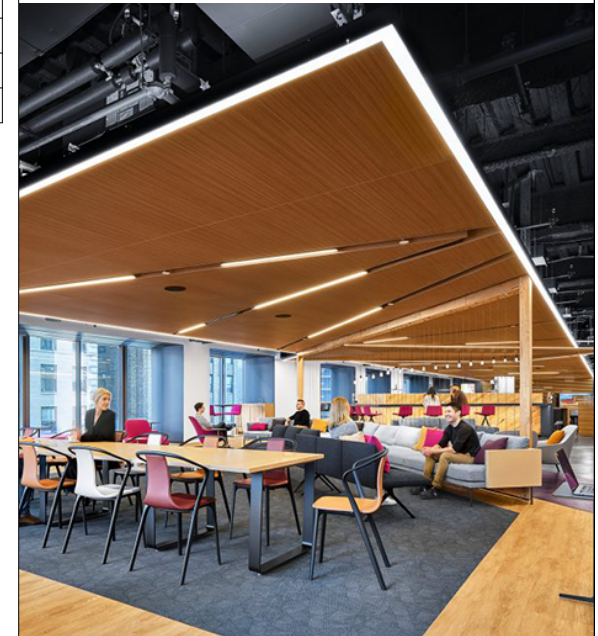
Design Solutions - ILLUSIONS® Detail List

Sheet Number	Sheet Name	View Name
ILL-DS-PD01	PERIMETER DETAIL ILL_P1_SFR	Perimeter at Wall 3/4" Reveal - Main Tee Free
ILL-DS-PD03	PERIMETER DETAIL ILL_P1C_SFR	Perimeter at Wall 3/4" Reveal - Cross Tee Free
ILL-DS-PD05	PERIMETER DETAIL ILL_P5_SFR	Perimeter at Wall Field Cut C-Channel - Free
ILL-DS-PD06	PERIMETER DETAIL ILL_P5_SFX	Perimeter at Wall Field Cut C-Channel - Fixed
ILL-DS-PD07	PERIMETER DETAIL ILL_P7_L&C_SFR	Perimeter at Wall Field Cut 3/4" Reveal C-Channel - Free
ILL-DS-PD08	PERIMETER DETAIL ILL_P7_L&C_SFX	Perimeter at Wall Field Cut 3/4" Reveal C-Channel - Fixed
ILL-DS-PD09	PERIMETER DETAIL ILL_P7_W_SFR	Perimeter at Wall Field Cut 7/8" Reveal W-Mold - Free
ILL-DS-PD10	PERIMETER DETAIL ILL_P7_W_SFX	Perimeter at Wall Field Cut 7/8" Reveal W-Mold - Fixed
ILL-DS-PD11	PERIMETER DETAIL ILL_P10	Perimeter Floating at Main Tee - No Trim
ILL-DS-PD12	PERIMETER DETAIL ILL_P10C	Perimeter No Trim - 9/16" Offset Cross Tee
ILL-DS-PD13	PERIMETER DETAIL ILL_P16_17C	Perimeter Floating 3-1/4" Trim - Main Tee
ILL-DS-PD14	PERIMETER DETAIL ILL_P16C	Perimeter Floating 3-1/4" Trim Cross Tee with 1/2" Spacer
ILL-DS-PD15	PERIMETER DETAIL ILL_P16D	Perimeter Floating 3-1/4" Trim - Cross Tee
ILL-DS-PD16	PERIMETER DETAIL ILL_P20_21	Perimeter Floating 4-1/2" Trim - Field Cut Main Tee
ILL-DS-PD02	PERIMETER DETAIL ILL_P1_SFX	Perimeter at Wall 3/4" Reveal - Main Tee Fixed
ILL-DS-PD04	PERIMETER DETAIL ILL_P1C_SFX	Perimeter at Wall 3/4" Reveal - Cross Tee Fixed
ILL-DS-PJ-01	PANEL JOINT DETAIL ILL-PJ01	Panel Tight Joint - Cross Tee
ILL-DS-PJ-01C	PANEL JOINT DETAIL ILL-PJ01C	Panel Tight Joint - Main Tee
ILL-DS-PJ-02	PANEL JOINT DETAIL ILL-PJ02	Panel Joint 1/2" Reveal with 1/16" Spacer - Cross Tee
ILL-DS-PJ-02C	PANEL JOINT DETAIL ILL-PJ-02C	Panel Joint 1/2" Reveal - Main Tee

USG CEILINGS PLUS® Design Solutions - ILLUSIONS®

NOTES:

1. REFERENCE USG IC5488 FOR INSTALLATION INSTRUCTIONS.
2. PANELS MAY BE FIELD-CUT AT WALL AND COLUMNS BUT OTHERWISE SHOULD BE USED IN FULL MODULES.
3. FOR BEST INSTALLATION RESULTS, PRE-DRILL ALL HOLES AT PANEL PERIMETERS THROUGH PANEL AND SUSPENSION SYSTEM BEFORE INSTALLING FASTENER.



USG Corporation
550 West Adams Street
Chicago, IL 60661 USA
www.usg.com

CEILINGS PLUS®

Design Solutions - ILLUSIONS® SYSTEM DETAILS - 1-1/2" FORMED METAL PANELS

ISSUE RECORD:

09/02/22

REV: DATE:

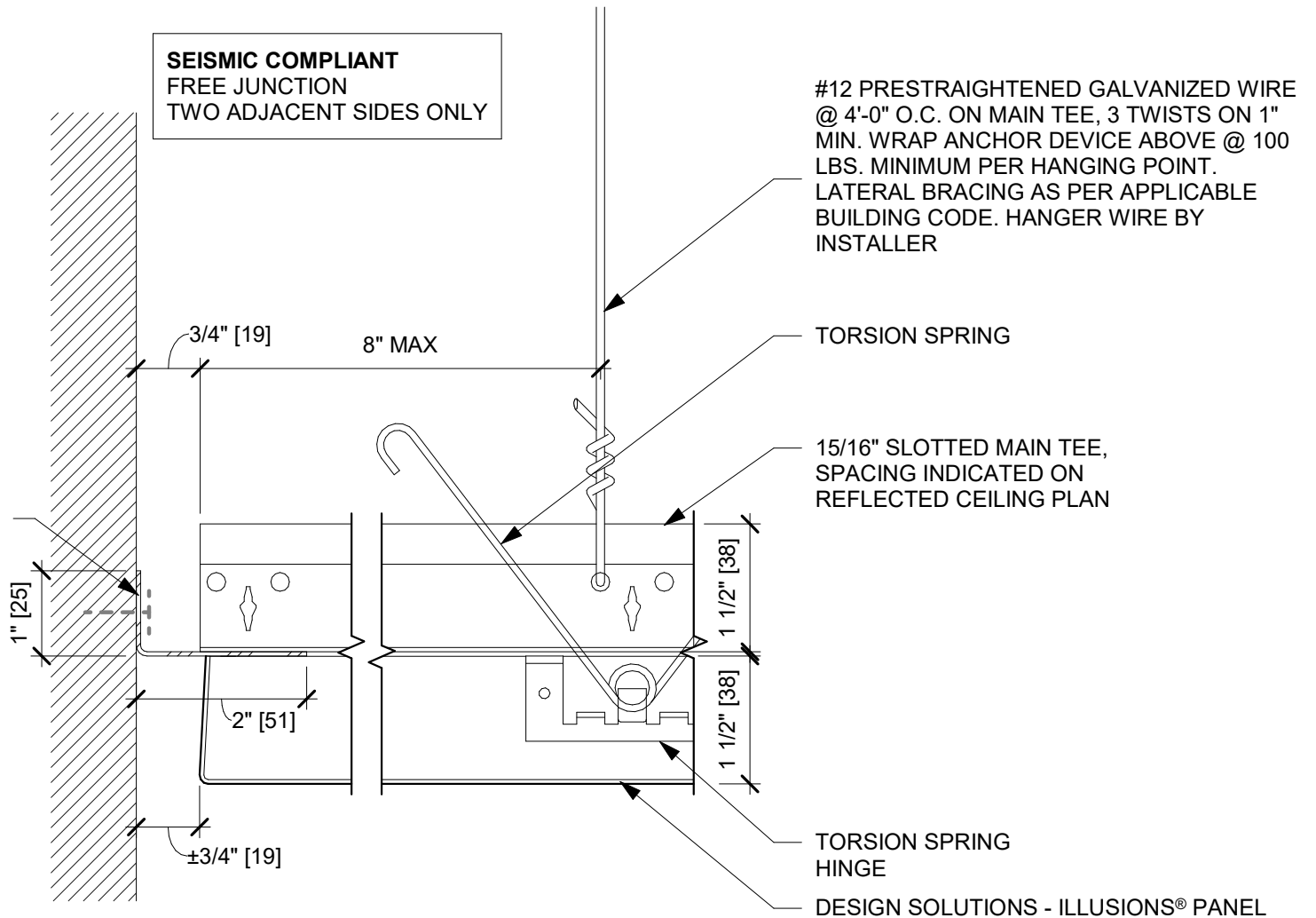
SHEET INFORMATION:
SCALE:

ILL-DS-PD00

Design Solutions - ILLUSIONS® SYSTEM DETAILS

DISCLAIMER: THE USG PRODUCT DETAILS CONTAINED HEREIN ARE INTENDED FOR USE AS PRODUCT REFERENCE MATERIAL BY ARCHITECTS, ENGINEERS, OTHER DESIGN PROFESSIONALS, CONTRACTORS, BUILDING CODE OFFICIALS, OR OTHER COMPETENT CONSTRUCTION INDUSTRY TRADE PROFESSIONALS HAVING AN INTEREST IN THE SELECTION, SPECIFICATION AND USE OF PRODUCTS MANUFACTURED BY THE SUBSIDIARIES OF USG CORPORATION. THE DRAWINGS ARE INTENDED SOLELY AS TECHNICAL SUPPORT INCIDENT TO THE SALE AND USE OF USG PRODUCTS AND NOT INTENDED TO BE A SUBSTITUTE FOR THE DESIGN REVIEW AND APPROVAL OF THE LICENSED DESIGN PROFESSIONALS FOR THE PROJECT. THESE MATERIALS MAY BE PRINTED AND/OR TRANSFERRED ELECTRONICALLY SOLELY AS NEEDED BY THE USER, BECAUSE CAD/ELECTRONIC FILES AND BIM (BUILDING INFORMATION MODELING) FILES CAN BE MODIFIED BY OTHER PARTIES, WITHOUT NOTICE OR INDICATION OF SUCH MODIFICATIONS, MODIFICATION OF USG PRODUCT CAD AND/OR BIM DRAWINGS IS THE SOLE RESPONSIBILITY OF THE DESIGN PROFESSIONAL. ©2022 USG CORPORATION.

PERIMETER TRIM (BLACK) FIELD
CUT & MITER FIELD FASTEN TO
STRUCTURAL FRAMING. AS
REQUIRED



1 Perimeter at Wall 3/4" Reveal - Main Tee Free
6" = 1'-0"



USG Corporation
550 West Adams Street
Chicago, IL 60661 USA
www.usg.com

CEILINGS PLUS®

Design Solutions - ILLUSIONS® SYSTEM DETAILS - 1-1/2" FORMED METAL PANELS

ISSUE RECORD:

09/02/22

REV: DATE:

SHEET INFORMATION:

SCALE: 6" = 1'-0"

ILL-DS-PD01

PERIMETER DETAIL ILL_P1_SFR

DISCLAIMER: THE USG PRODUCT DETAILS CONTAINED HEREIN ARE INTENDED FOR USE AS PRODUCT REFERENCE MATERIAL BY ARCHITECTS, ENGINEERS, OTHER DESIGN PROFESSIONALS, CONTRACTORS, BUILDING CODE OFFICIALS, OR OTHER COMPETENT CONSTRUCTION INDUSTRY TRADE PROFESSIONALS HAVING AN INTEREST IN THE SELECTION, SPECIFICATION AND USE OF PRODUCTS MANUFACTURED BY THE SUBSIDIARIES OF USG CORPORATION. THE DRAWINGS ARE INTENDED SOLELY AS TECHNICAL SUPPORT INCIDENT TO THE SALE AND USE OF USG PRODUCTS AND NOT INTENDED TO BE A SUBSTITUTE FOR THE DESIGN REVIEW AND APPROVAL OF THE LICENSED DESIGN PROFESSIONALS FOR THE PROJECT. THESE MATERIALS MAY BE PRINTED AND/OR TRANSFERRED ELECTRONICALLY SOLELY AS NEEDED BY THE USER. BECAUSE CAD/ELECTRONIC FILES AND BIM (BUILDING INFORMATION MODELING) FILES CAN BE MODIFIED BY OTHER PARTIES, WITHOUT NOTICE OR INDICATION OF SUCH MODIFICATIONS, MODIFICATION OF USG PRODUCT CAD AND/OR BIM DRAWINGS IS THE SOLE RESPONSIBILITY OF THE DESIGN PROFESSIONAL. ©2022 USG CORPORATION.

**SEISMIC COMPLIANT
FREE JUNCTION
TWO ADJACENT SIDES ONLY**

#12 PRESTRAIGHTENED GALVANIZED WIRE
@ 4'-0" O.C. ON MAIN TEE, 3 TWISTS ON 1"
MIN. WRAP ANCHOR DEVICE ABOVE @ 100
LBS. MINIMUM PER HANGING POINT.
LATERAL BRACING AS PER APPLICABLE
BUILDING CODE. HANGER WIRE BY
INSTALLER

TORSION SPRING

CL-3004 CLIP FIELD FASTEN TO
CROSS TO MAIN TYPICAL@
PERIMETER

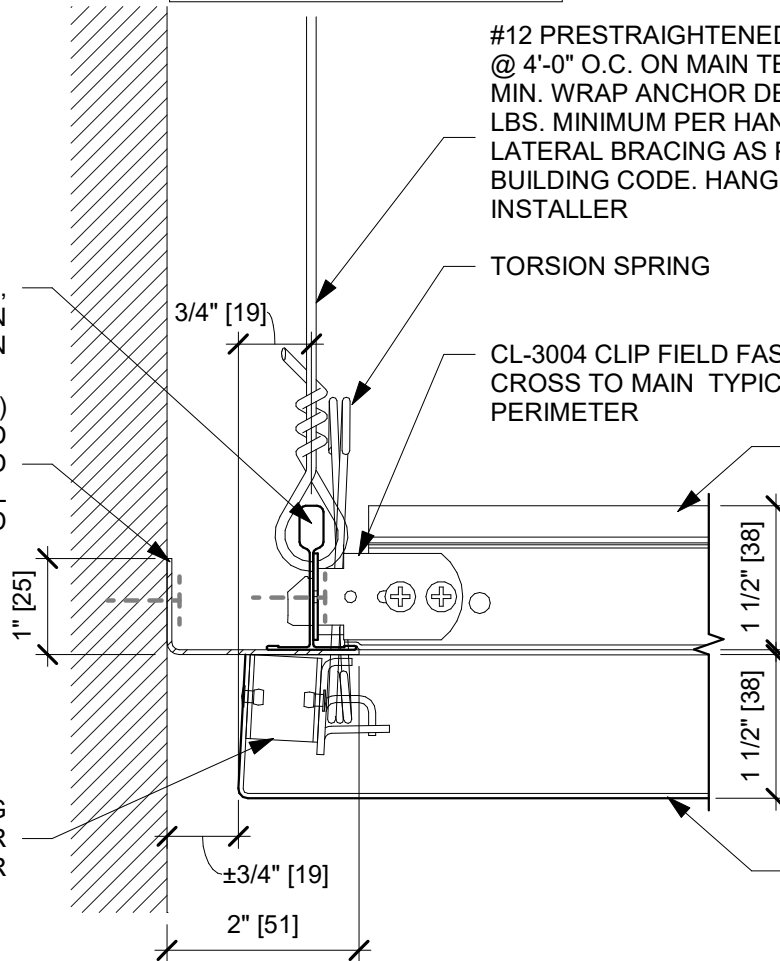
TEE @ SPACING INDICATED
ON REFLECTED CEILING PLAN
FIELD CUT AS REQUIRED

DESIGN SOLUTIONS - ILLUSIONS® PANEL

15/16" SLOTTED MAIN TEE,
SPACING INDICATED ON
REFLECTED CEILING PLAN

PERIMETER TRIM (BLACK)
W/ FACTORY NOTCHED
FIELD CUT & MITER FIELD
FASTEN TO STRUCTURAL
FRAMING AS REQUIRED

TORSION SPRING
HINGE W/ 3/4" SPACER
TYPICAL @ PERIMETER



① Perimeter at Wall 3/4" Reveal - Cross Tee Free
6" = 1'-0"



USG Corporation
550 West Adams Street
Chicago, IL 60661 USA
www.usg.com

CEILINGS PLUS®

**Design Solutions - ILLUSIONS®
SYSTEM DETAILS - 1-1/2" FORMED METAL PANELS**

ISSUE RECORD:

09/02/22

REV: DATE:

SHEET INFORMATION:

SCALE: 6" = 1'-0"

ILL-DS-PD03

PERIMETER DETAIL ILL_P1C_SFR

DISCLAIMER: THE USG PRODUCT DETAILS CONTAINED HEREIN ARE INTENDED FOR USE AS PRODUCT REFERENCE MATERIAL BY ARCHITECTS, ENGINEERS, OTHER DESIGN PROFESSIONALS, CONTRACTORS, BUILDING CODE OFFICIALS, OR OTHER COMPETENT CONSTRUCTION INDUSTRY TRADE PROFESSIONALS HAVING AN INTEREST IN THE SELECTION, SPECIFICATION AND USE OF PRODUCTS MANUFACTURED BY THE SUBSIDIARIES OF USG CORPORATION. THE DRAWINGS ARE INTENDED SOLELY AS TECHNICAL SUPPORT INCIDENT TO THE SALE AND USE OF USG PRODUCTS AND NOT INTENDED TO BE A SUBSTITUTE FOR THE DESIGN REVIEW AND APPROVAL OF THE LICENSED DESIGN PROFESSIONALS FOR THE PROJECT. THESE MATERIALS MAY BE PRINTED AND/OR TRANSFERRED ELECTRONICALLY SOLELY AS NEEDED BY THE USER, BECAUSE CAD/ELECTRONIC FILES AND BIM (BUILDING INFORMATION MODELING) FILES CAN BE MODIFIED BY OTHER PARTIES, WITHOUT NOTICE OR INDICATION OF SUCH MODIFICATIONS, MODIFICATION OF USG PRODUCT CAD AND/OR BIM DRAWINGS IS THE SOLE RESPONSIBILITY OF THE DESIGN PROFESSIONAL. ©2022 USG CORPORATION.

**SEISMIC COMPLIANT
FIXED JUNCTION
TWO ADJACENT SIDES ONLY**

15/16" SLOTTED MAIN TEE,
SPACING INDICATED ON
REFLECTED CEILING PLAN

PERIMETER TRIM (BLACK)
W/ FACTORY NOTCHED
FIELD CUT & MITER FIELD
FASTEN TO STRUCTURAL
FRAMING AS REQUIRED

FIELD FASTEN "L"
ANGLE TO MAIN TEE
@ 4'-0" [1250] MAX.

TORSION SPRING
HINGE W/ 3/4" SPACER
TYPICAL @ PERIMETER

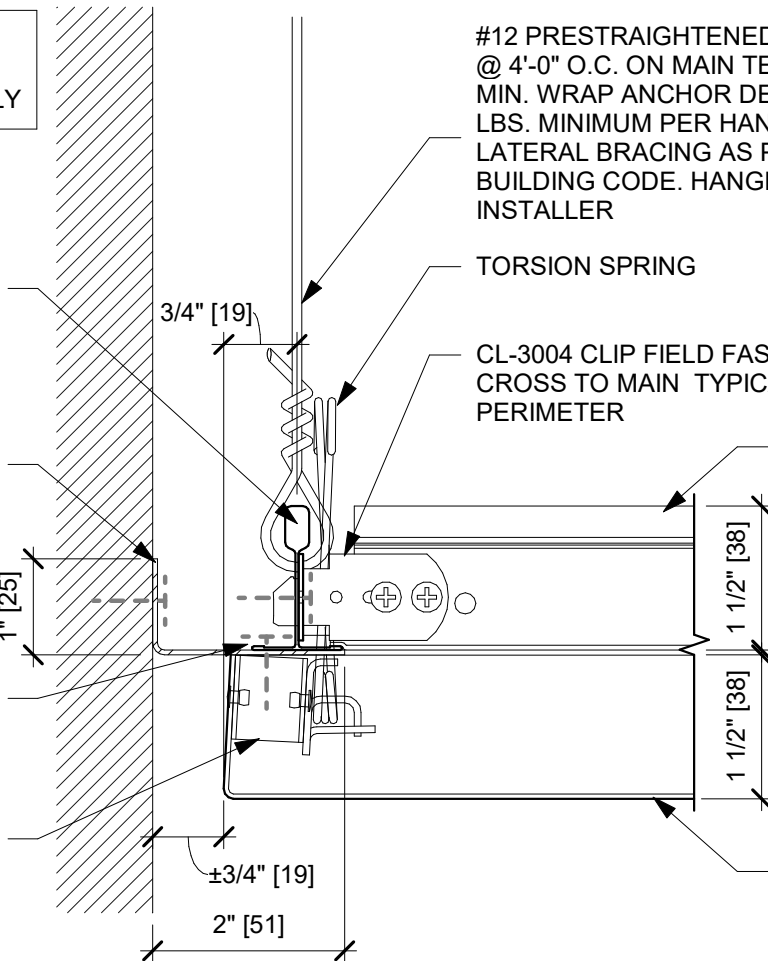
#12 PRESTRAIGHTENED GALVANIZED WIRE
@ 4'-0" O.C. ON MAIN TEE, 3 TWISTS ON 1"
MIN. WRAP ANCHOR DEVICE ABOVE @ 100
LBS. MINIMUM PER HANGING POINT.
LATERAL BRACING AS PER APPLICABLE
BUILDING CODE. HANGER WIRE BY
INSTALLER

TORSION SPRING

CL-3004 CLIP FIELD FASTEN TO
CROSS TO MAIN TYPICAL@
PERIMETER

TEE @ SPACING INDICATED
ON REFLECTED CEILING PLAN
FIELD CUT AS REQUIRED

DESIGN SOLUTIONS - ILLUSIONS® PANEL



① Perimeter at Wall 3/4" Reveal - Cross Tee Fixed
6" = 1'-0"



USG Corporation
550 West Adams Street
Chicago, IL 60661 USA
www.usg.com

CEILINGS PLUS®

Design Solutions - ILLUSIONS® SYSTEM DETAILS - 1-1/2" FORMED METAL PANELS

ISSUE RECORD:

09/02/22

REV: DATE:

SHEET INFORMATION:

SCALE: 6" = 1'-0"

ILL-DS-PD04

PERIMETER DETAIL ILL_P1C_SFX

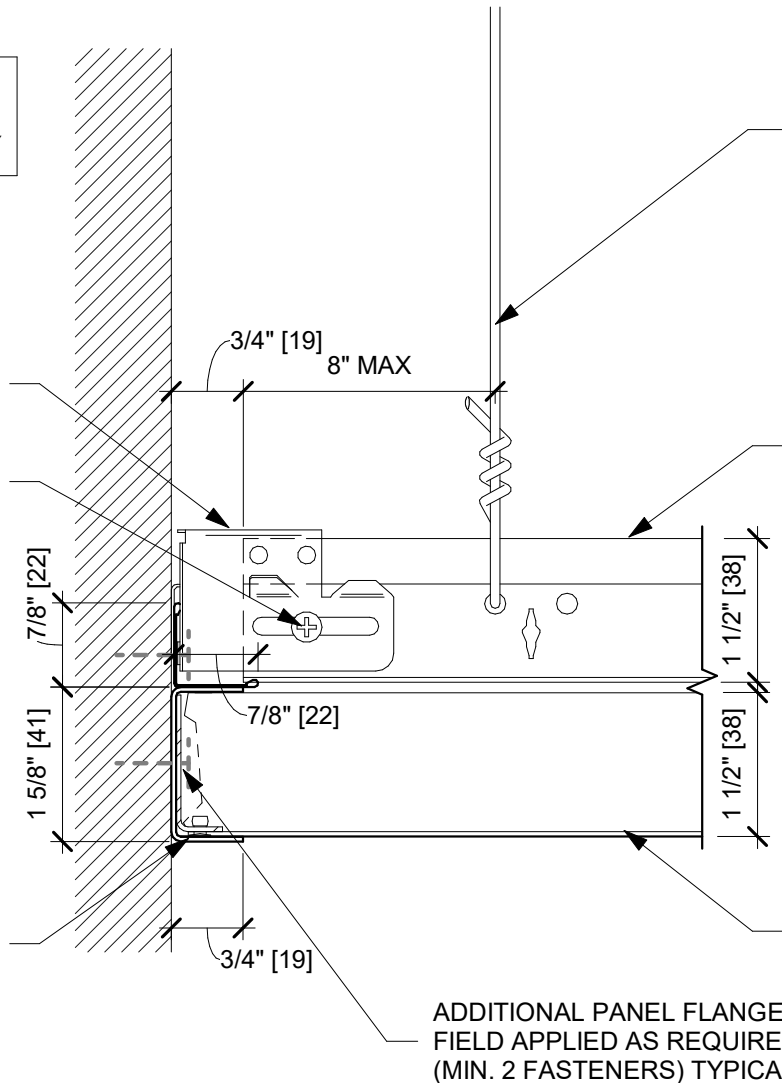
DISCLAIMER: THE USG PRODUCT DETAILS CONTAINED HEREIN ARE INTENDED FOR USE AS PRODUCT REFERENCE MATERIAL BY ARCHITECTS, ENGINEERS, OTHER DESIGN PROFESSIONALS, CONTRACTORS, BUILDING CODE OFFICIALS, OR OTHER COMPETENT CONSTRUCTION INDUSTRY TRADE PROFESSIONALS HAVING AN INTEREST IN THE SELECTION, SPECIFICATION AND USE OF PRODUCTS MANUFACTURED BY THE SUBSIDIARIES OF USG CORPORATION. THE DRAWINGS ARE INTENDED SOLELY AS TECHNICAL SUPPORT INCIDENT TO THE SALE AND USE OF USG PRODUCTS AND NOT INTENDED TO BE A SUBSTITUTE FOR THE DESIGN REVIEW AND APPROVAL OF A LICENSED DESIGN PROFESSIONAL FOR THE PROJECT. THESE MATERIALS MAY BE PRINTED AND/OR TRANSFERRED ELECTRONICALLY SOLELY AS NEEDED BY THE USER, BECAUSE CAD/ELECTRONIC FILES AND BIM (BUILDING INFORMATION MODELING) FILES CAN BE MODIFIED BY OTHER PARTIES, WITHOUT NOTICE OR INDICATION OF SUCH MODIFICATIONS, MODIFICATION OF USG PRODUCT CAD AND/OR BIM DRAWINGS IS THE SOLE RESPONSIBILITY OF THE DESIGN PROFESSIONAL. ©2022 USG CORPORATION.

SEISMIC COMPLIANT
FREE JUNCTION
TWO ADJACENT SIDES ONLY

ACM7 WALL ATTACHMENT CLIP
FIELD FASTEN TO PERIMETER
TRIM AS REQUIRED

FIELD FASTEN TO TEE FOR
FLOATING WALL

PERIMETER TRIM (BLACK) FIELD
CUT & MITER. FASTEN TO
STRUCTURAL FRAMING.
FRAMING AS REQUIRED



#12 PRESTRAIGHTENED GALVANIZED WIRE
@ 4'-0" O.C. ON MAIN TEE, 3 TWISTS ON 1"
MIN. WRAP ANCHOR DEVICE ABOVE @ 100
LBS. MINIMUM PER HANGING POINT.
LATERAL BRACING AS PER APPLICABLE
BUILDING CODE. HANGER WIRE BY
INSTALLER

TEE @ SPACING INDICATED ON
REFLECTED CEILING PLAN FIELD
CUT AS REQUIRED

DESIGN SOLUTIONS - ILLUSIONS® PANEL
FIELD CUT AS REQUIRED

ADDITIONAL PANEL FLANGE,
FIELD APPLIED AS REQUIRED
(MIN. 2 FASTENERS) TYPICAL

① Perimeter at Wall Field Cut C-Channel - Free
6" = 1'-0"



USG Corporation
550 West Adams Street
Chicago, IL 60661 USA
www.usg.com

CEILINGS PLUS®

Design Solutions - ILLUSIONS® SYSTEM DETAILS - 1-1/2" FORMED METAL PANELS

ISSUE RECORD:

09/02/22

REV: DATE:

SHEET INFORMATION:

SCALE: 6" = 1'-0"

ILL-DS-PD05

PERIMETER DETAIL ILL_P5_SFR

DISCLAIMER: THE USG PRODUCT DETAILS CONTAINED HEREIN ARE INTENDED FOR USE AS PRODUCT REFERENCE MATERIAL BY ARCHITECTS, ENGINEERS, OTHER DESIGN PROFESSIONALS, CONTRACTORS, BUILDING CODE OFFICIALS, OR OTHER COMPETENT CONSTRUCTION INDUSTRY TRADE PROFESSIONALS HAVING AN INTEREST IN THE SELECTION, SPECIFICATION AND USE OF PRODUCTS MANUFACTURED BY THE SUBSIDIARIES OF USG CORPORATION. THE DRAWINGS ARE INTENDED SOLELY AS TECHNICAL SUPPORT INCIDENT TO THE SALE AND USE OF USG PRODUCTS AND NOT INTENDED TO BE A SUBSTITUTE FOR THE DESIGN REVIEW AND APPROVAL OF THE LICENSED DESIGN PROFESSIONALS FOR THE PROJECT. THESE MATERIALS MAY BE PRINTED AND/OR TRANSFERRED ELECTRONICALLY SOLELY AS NEEDED BY THE USER, BECAUSE CAD/ELECTRONIC FILES AND BIM (BUILDING INFORMATION MODELING) FILES CAN BE MODIFIED BY OTHER PARTIES, WITHOUT NOTICE OR INDICATION OF SUCH MODIFICATIONS, MODIFICATION OF USG PRODUCT CAD AND/OR BIM DRAWINGS IS THE SOLE RESPONSIBILITY OF THE DESIGN PROFESSIONAL. ©2022 USG CORPORATION.

SEISMIC COMPLIANT
FIXED JUNCTION
TWO ADJACENT SIDES ONLY

#12 PRESTRAIGHTENED GALVANIZED WIRE
@ 4'-0" O.C. ON MAIN TEE, 3 TWISTS ON 1" MIN. WRAP
ANCHOR DEVICE ABOVE @ 100 LBS. MINIMUM
PER HANGING POINT. LATERAL BRACING
AS PER APPLICABLE BUILDING CODE.
HANGER WIRE BY INSTALLER

FIELD FASTEN TO TEE FOR
FLOATING WALL
ACM7 WALL ATTACHMENT CLIP
FIELD FASTEN TO PERIMETER
TRIM AS REQUIRED.
BY INSTALLER

TEE @ SPACING INDICATED ON
REFLECTED CEILING PLAN FIELD
CUT AS REQUIRED

PERIMETER TRIM (BLACK)
W/ FACTORY NOTCHED
FIELD CUT & MITER FIELD
FASTEN TO STRUCTURAL
FRAMING AS REQUIRED.
(FINISH TO MATCH PANEL)

DESIGN SOLUTIONS - ILLUSIONS® PANEL
FIELD CUT AS REQUIRED.

ADDITIONAL. PANEL FLANGE
FIELD APPLIED AS
REQUIRED (MIN. 2
FASTENERS) TYPICAL

① Perimeter at Wall Field Cut C-Channel - Fixed
6" = 1'-0"



USG Corporation
550 West Adams Street
Chicago, IL 60661 USA
www.usg.com

CEILINGS PLUS®

Design Solutions - ILLUSIONS® SYSTEM DETAILS - 1-1/2" FORMED METAL PANELS

ISSUE RECORD:

09/02/22

REV: DATE:

SHEET INFORMATION:

SCALE: 6" = 1'-0"

ILL-DS-PD06

PERIMETER DETAIL ILL_P5_SFX

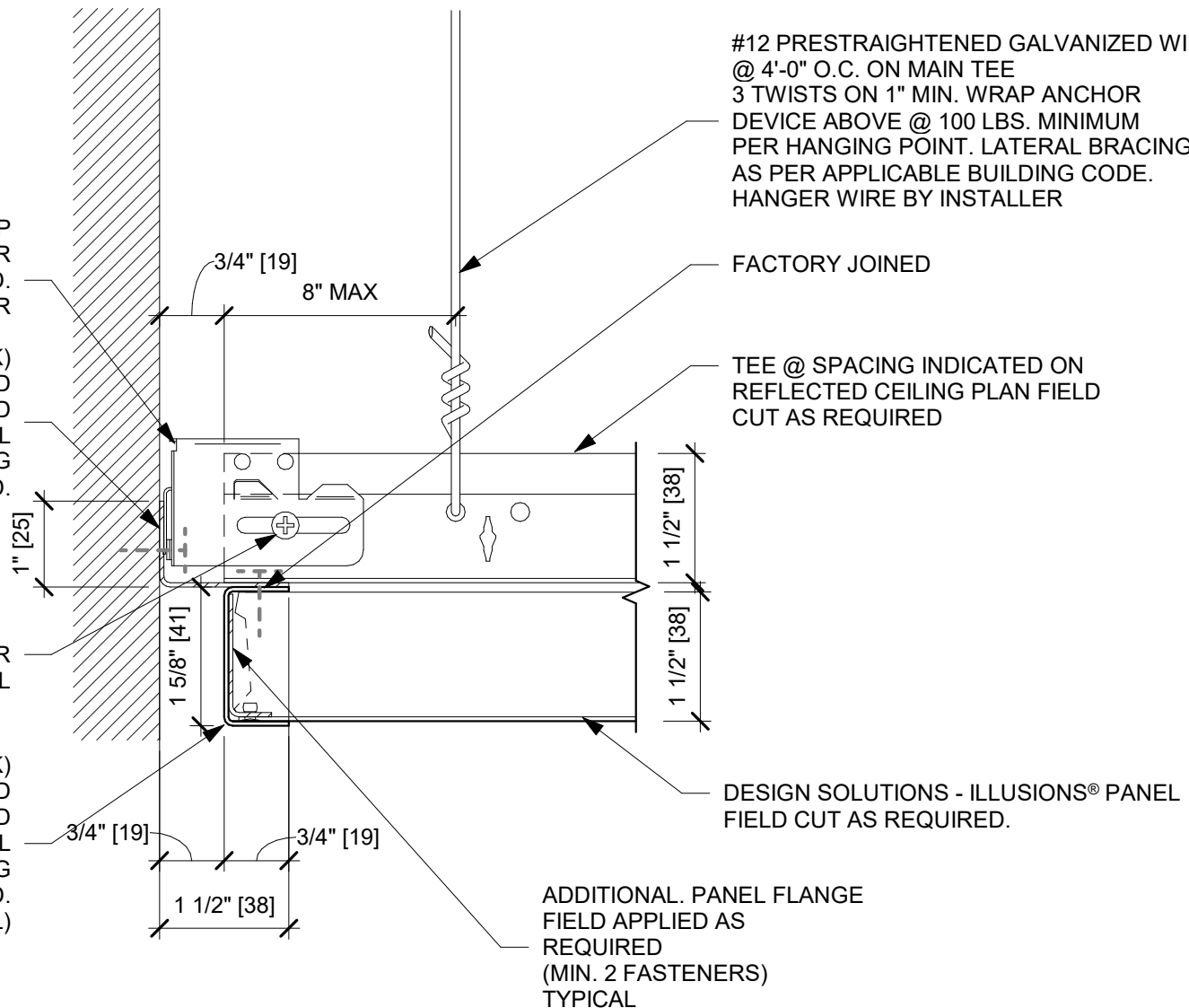
DISCLAIMER: THE USG PRODUCT DETAILS CONTAINED HEREIN ARE INTENDED FOR USE AS PRODUCT REFERENCE MATERIAL BY ARCHITECTS, ENGINEERS, OTHER DESIGN PROFESSIONALS, CONTRACTORS, BUILDING CODE OFFICIALS, OR OTHER COMPETENT CONSTRUCTION INDUSTRY TRADE PROFESSIONALS HAVING AN INTEREST IN THE SELECTION, SPECIFICATION AND USE OF PRODUCTS MANUFACTURED BY THE SUBSIDIARIES OF USG CORPORATION. THE DRAWINGS ARE INTENDED SOLELY AS TECHNICAL SUPPORT INCIDENT TO THE SALE AND USE OF USG PRODUCTS AND NOT INTENDED TO BE A SUBSTITUTE FOR THE DESIGN REVIEW AND APPROVAL OF THE LICENSED DESIGN PROFESSIONALS FOR THE PROJECT. THESE MATERIALS MAY BE PRINTED AND/OR TRANSFERRED ELECTRONICALLY SOLELY AS NEEDED BY THE USER, BECAUSE CAD/ELECTRONIC FILES AND BIM (BUILDING INFORMATION MODELING) FILES CAN BE MODIFIED BY OTHER PARTIES, WITHOUT NOTICE OR INDICATION OF SUCH MODIFICATIONS, MODIFICATION OF USG PRODUCT CAD AND/OR BIM DRAWINGS IS THE SOLE RESPONSIBILITY OF THE DESIGN PROFESSIONAL. ©2022 USG CORPORATION.

ACM7 WALL ATTACHMENT CLIP
FIELD FASTEN TO PERIMETER
TRIM AS REQUIRED.
BY INSTALLER

PERIMETER TRIM (BLACK)
W/ FACTORY NOTCHED
FIELD CUT & MITER FIELD
FASTEN TO STRUCTURAL
FRAMING
AS REQUIRED.

FIELD FASTEN TO TEE FOR
FLOATING WALL

PERIMETER TRIM (BLACK)
W/ FACTORY NOTCHED
FIELD CUT & MITER FIELD
FASTEN TO STRUCTURAL
FRAMING
AS REQUIRED.
(FINISH TO MATCH PANEL)



① Perimeter at Wall Field Cut 3/4" Reveal C-Channel - Free
6" = 1'-0"



USG Corporation
550 West Adams Street
Chicago, IL 60661 USA
www.usg.com

CEILINGS PLUS®

Design Solutions - ILLUSIONS® SYSTEM DETAILS - 1-1/2" FORMED METAL PANELS

ISSUE RECORD:

09/02/22

REV: DATE:

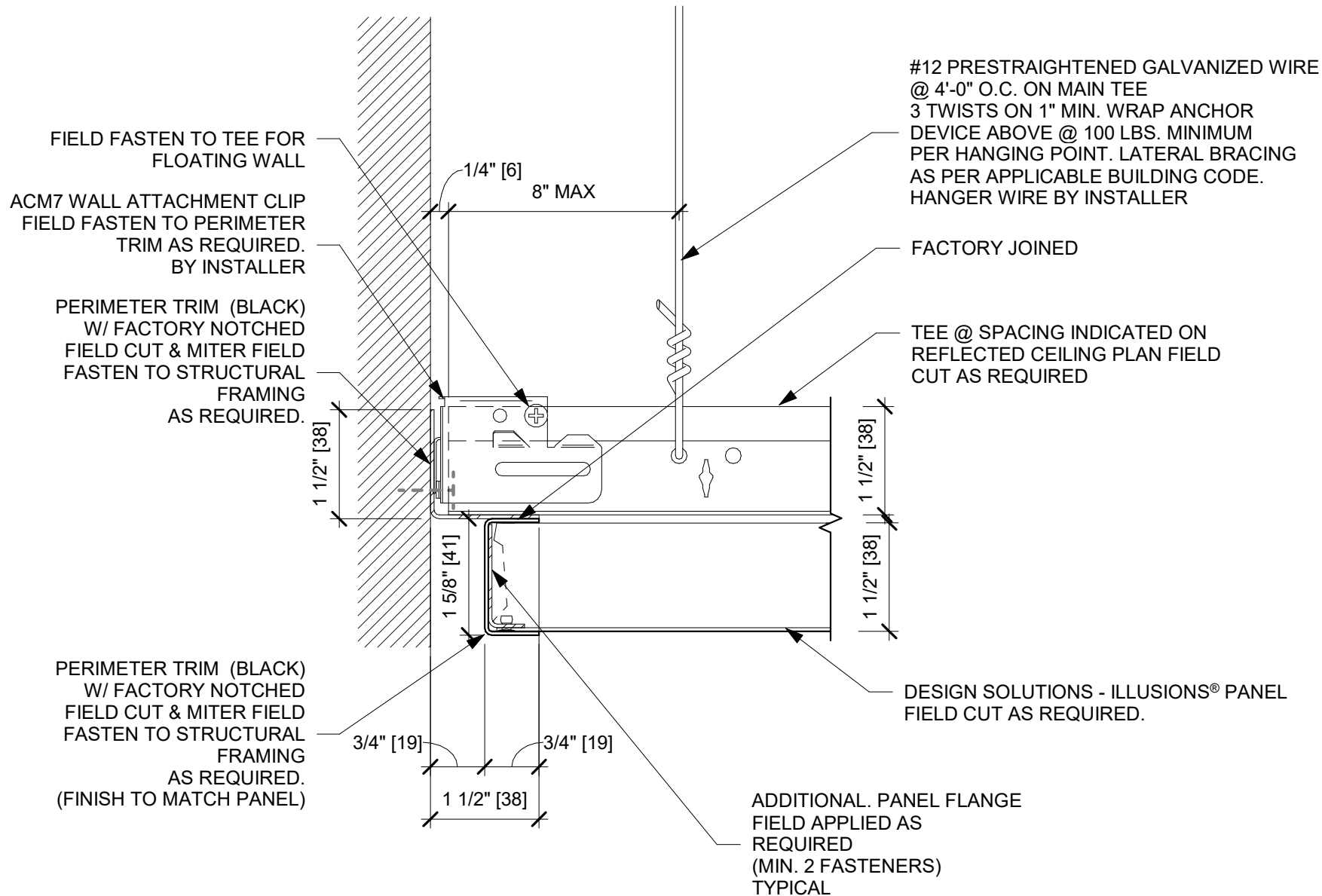
SHEET INFORMATION:

SCALE: 6" = 1'-0"

ILL-DS-PD07

PERIMETER DETAIL ILL_P7_L&C_SFR

DISCLAIMER: THE USG PRODUCT DETAILS CONTAINED HEREIN ARE INTENDED FOR USE AS PRODUCT REFERENCE MATERIAL BY ARCHITECTS, ENGINEERS, OTHER DESIGN PROFESSIONALS, CONTRACTORS, BUILDING CODE OFFICIALS, OR OTHER COMPETENT CONSTRUCTION INDUSTRY TRADE PROFESSIONALS HAVING AN INTEREST IN THE SELECTION, SPECIFICATION AND USE OF PRODUCTS MANUFACTURED BY THE SUBSIDIARIES OF USG CORPORATION. THE DRAWINGS ARE INTENDED SOLELY AS TECHNICAL SUPPORT INCIDENT TO THE SALE AND USE OF USG PRODUCTS AND NOT INTENDED TO BE A SUBSTITUTE FOR THE DESIGN REVIEW AND APPROVAL OF THE LICENSED DESIGN PROFESSIONALS FOR THE PROJECT. THESE MATERIALS MAY BE PRINTED AND/OR TRANSFERRED ELECTRONICALLY SOLELY AS NEEDED BY THE USER, BECAUSE CAD/ELECTRONIC FILES AND BIM (BUILDING INFORMATION MODELING) FILES CAN BE MODIFIED BY OTHER PARTIES, WITHOUT NOTICE OR INDICATION OF SUCH MODIFICATIONS, MODIFICATION OF USG PRODUCT CAD AND/OR BIM DRAWINGS IS THE SOLE RESPONSIBILITY OF THE DESIGN PROFESSIONAL. ©2022 USG CORPORATION.



1 Perimeter at Wall Field Cut 3/4" Reveal C-Channel - Fixed
6" = 1'-0"



USG Corporation
550 West Adams Street
Chicago, IL 60661 USA
www.usg.com

CEILINGS PLUS®

Design Solutions - ILLUSIONS® SYSTEM DETAILS - 1-1/2" FORMED METAL PANELS

ISSUE RECORD:

09/02/22

REV: DATE:

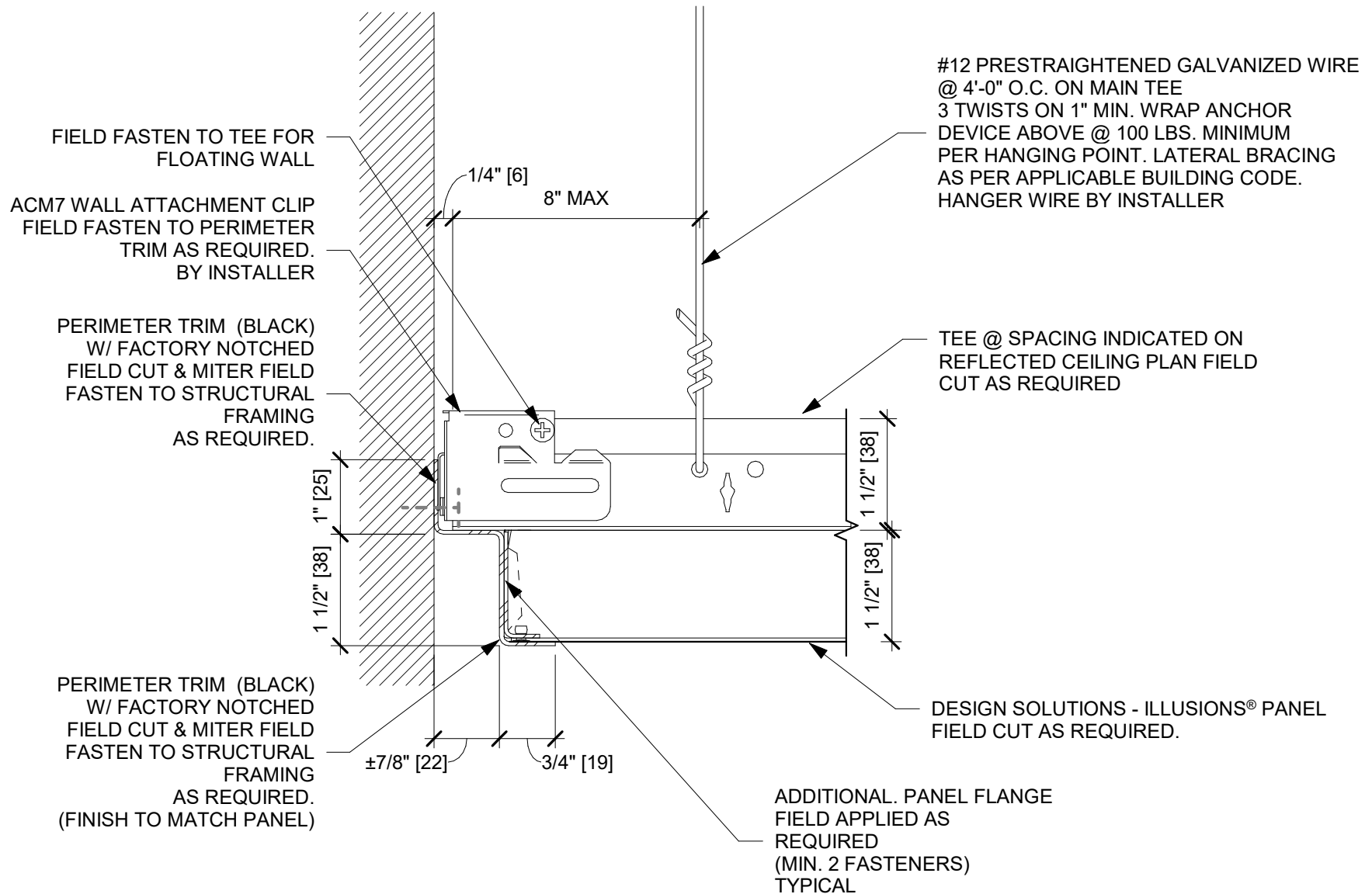
SHEET INFORMATION:

SCALE: 6" = 1'-0"

ILL-DS-PD08

PERIMETER DETAIL ILL_P7_L&C_SFX

DISCLAIMER: THE USG PRODUCT DETAILS CONTAINED HEREIN ARE INTENDED FOR USE AS PRODUCT REFERENCE MATERIAL BY ARCHITECTS, ENGINEERS, OTHER DESIGN PROFESSIONALS, CONTRACTORS, BUILDING CODE OFFICIALS, OR OTHER COMPETENT CONSTRUCTION INDUSTRY TRADE PROFESSIONALS HAVING AN INTEREST IN THE SELECTION, SPECIFICATION AND USE OF PRODUCTS MANUFACTURED BY THE SUBSIDIARIES OF USG CORPORATION. THE DRAWINGS ARE INTENDED SOLELY AS TECHNICAL SUPPORT INCIDENT TO THE SALE AND USE OF USG PRODUCTS AND NOT INTENDED TO BE A SUBSTITUTE FOR THE DESIGN REVIEW AND APPROVAL OF THE LICENSED DESIGN PROFESSIONALS FOR THE PROJECT. THESE MATERIALS MAY BE PRINTED AND/OR TRANSFERRED ELECTRONICALLY SOLELY AS NEEDED BY THE USER. BECAUSE CAD/ELECTRONIC FILES AND BIM (BUILDING INFORMATION MODELING) FILES CAN BE MODIFIED BY OTHER PARTIES, WITHOUT NOTICE OR INDICATION OF SUCH MODIFICATIONS, MODIFICATION OF USG PRODUCT CAD AND/OR BIM DRAWINGS IS THE SOLE RESPONSIBILITY OF THE DESIGN PROFESSIONAL. ©2022 USG CORPORATION.



① Perimeter at Wall Field Cut 7/8" Reveal W-Mold - Fixed
6" = 1'-0"



USG Corporation
550 West Adams Street
Chicago, IL 60661 USA
www.usg.com

CEILINGS PLUS®

Design Solutions - ILLUSIONS® SYSTEM DETAILS - 1-1/2" FORMED METAL PANELS

ISSUE RECORD:

09/02/22

REV: DATE:

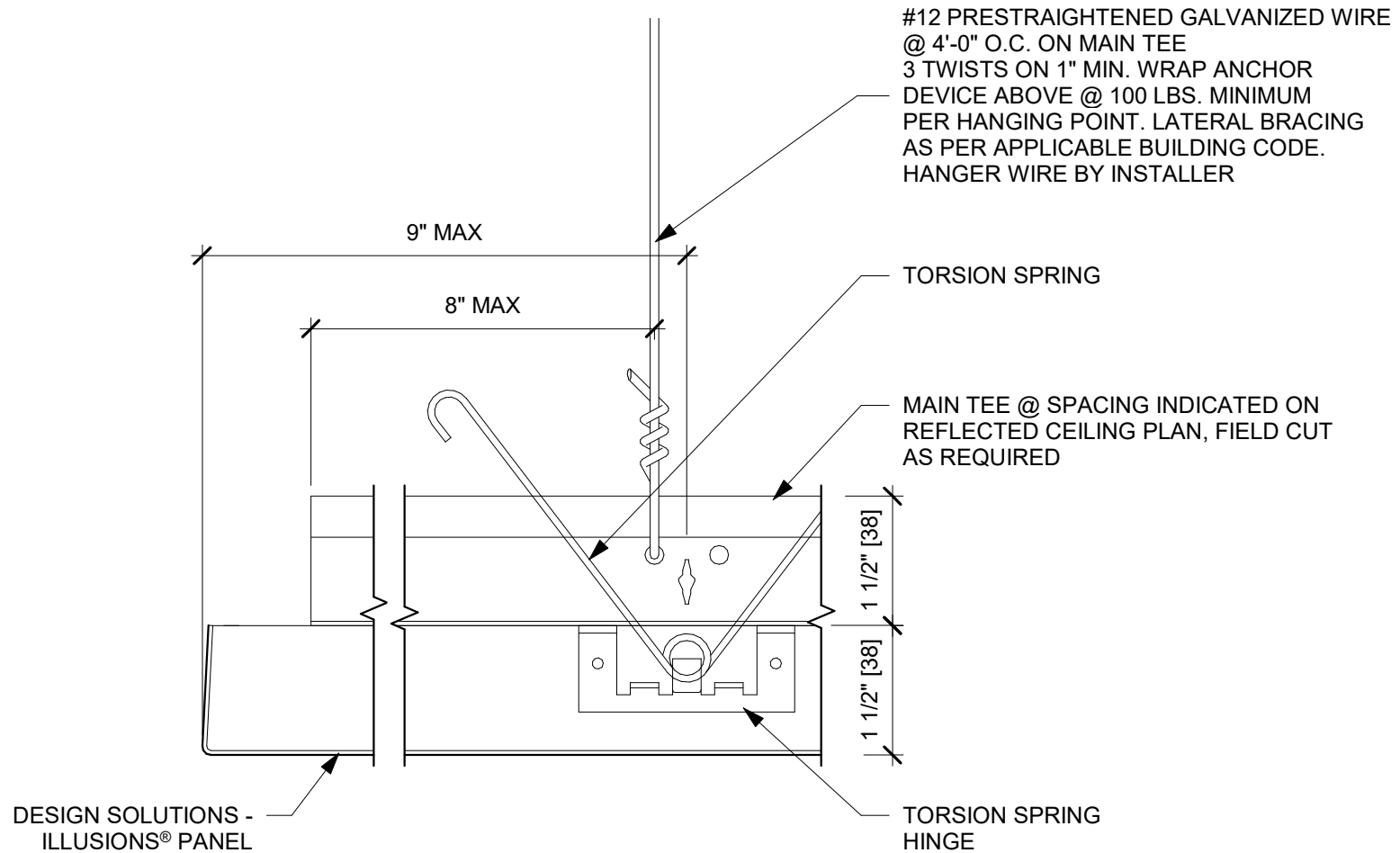
SHEET INFORMATION:

SCALE: 6" = 1'-0"

ILL-DS-PD10

PERIMETER DETAIL ILL_P7_W_SFX

DISCLAIMER: THE USG PRODUCT DETAILS CONTAINED HEREIN ARE INTENDED FOR USE AS PRODUCT REFERENCE MATERIAL BY ARCHITECTS, ENGINEERS, OTHER DESIGN PROFESSIONALS, CONTRACTORS, BUILDING CODE OFFICIALS, OR OTHER COMPETENT CONSTRUCTION INDUSTRY TRADE PROFESSIONALS HAVING AN INTEREST IN THE SELECTION, SPECIFICATION AND USE OF PRODUCTS MANUFACTURED BY THE SUBSIDIARIES OF USG CORPORATION. THE DRAWINGS ARE INTENDED SOLELY AS TECHNICAL SUPPORT INCIDENT TO THE SALE AND USE OF USG PRODUCTS AND NOT INTENDED TO BE A SUBSTITUTE FOR THE DESIGN REVIEW AND APPROVAL OF THE LICENSED DESIGN PROFESSIONALS FOR THE PROJECT. THESE MATERIALS MAY BE PRINTED AND/OR TRANSFERRED ELECTRONICALLY SOLELY AS NEEDED BY THE USER, BECAUSE CAD/ELECTRONIC FILES AND BIM (BUILDING INFORMATION MODELING) FILES CAN BE MODIFIED BY OTHER PARTIES, WITHOUT NOTICE OR INDICATION OF SUCH MODIFICATIONS, MODIFICATION OF USG PRODUCT CAD AND/OR BIM DRAWINGS IS THE SOLE RESPONSIBILITY OF THE DESIGN PROFESSIONAL. ©2022 USG CORPORATION.



① Perimeter Floating at Main Tee - No Trim
6" = 1'-0"



USG Corporation
550 West Adams Street
Chicago, IL 60661 USA
www.usg.com

CEILINGS PLUS®

Design Solutions - ILLUSIONS® SYSTEM DETAILS - 1-1/2" FORMED METAL PANELS

ISSUE RECORD:

09/02/22

REV: DATE:

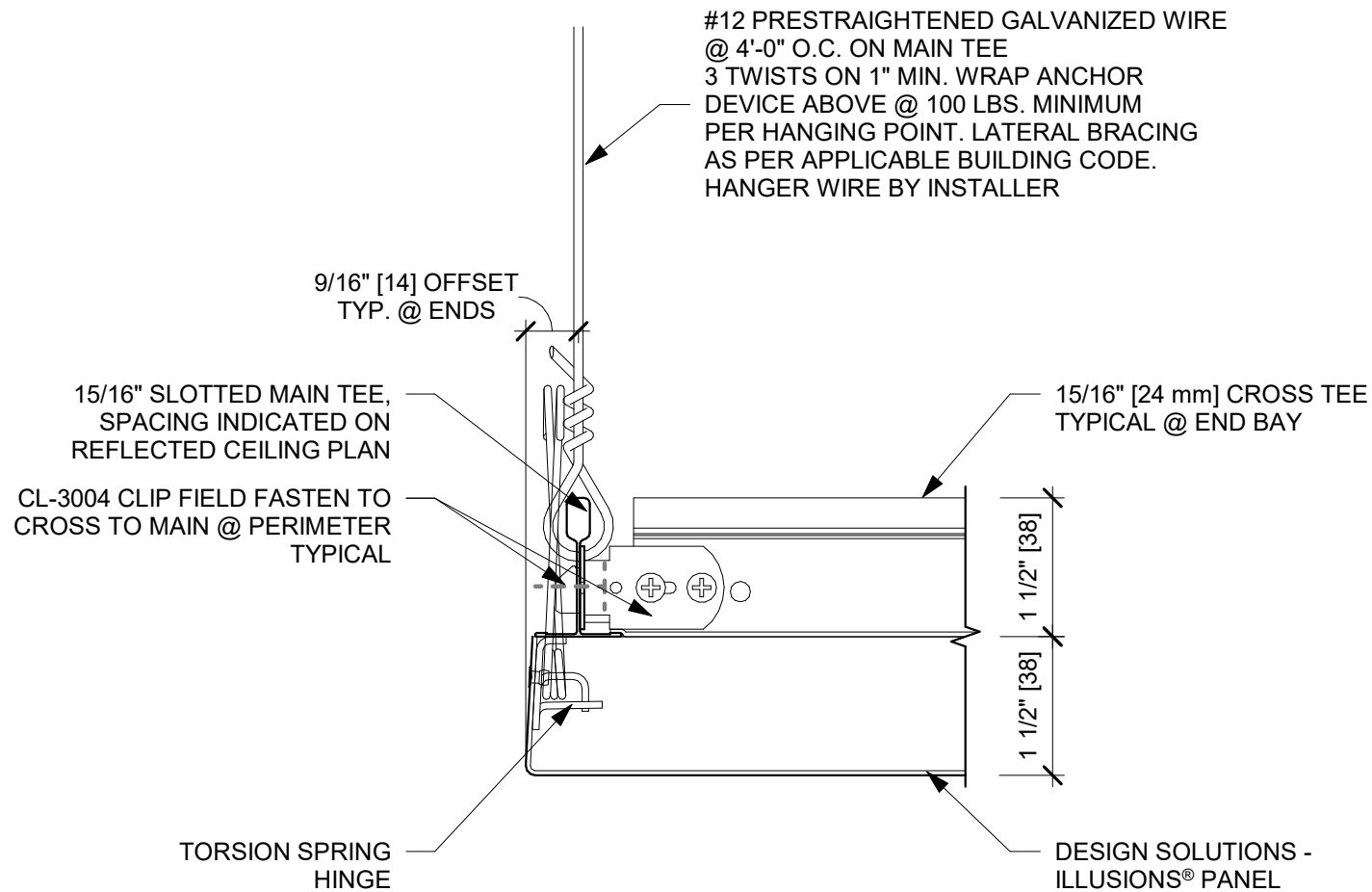
SHEET INFORMATION:

SCALE: 6" = 1'-0"

ILL-DS-PD11

PERIMETER DETAIL ILL_P10

DISCLAIMER: THE USG PRODUCT DETAILS CONTAINED HEREIN ARE INTENDED FOR USE AS PRODUCT REFERENCE MATERIAL BY ARCHITECTS, ENGINEERS, OTHER DESIGN PROFESSIONALS, CONTRACTORS, BUILDING CODE OFFICIALS, OR OTHER COMPETENT CONSTRUCTION INDUSTRY TRADE PROFESSIONALS HAVING AN INTEREST IN THE SELECTION, SPECIFICATION AND USE OF PRODUCTS MANUFACTURED BY THE SUBSIDIARIES OF USG CORPORATION. THE DRAWINGS ARE INTENDED SOLELY AS TECHNICAL SUPPORT INCIDENT TO THE SALE AND USE OF USG PRODUCTS AND NOT INTENDED TO BE A SUBSTITUTE FOR THE DESIGN REVIEW AND APPROVAL OF THE LICENSED DESIGN PROFESSIONALS FOR THE PROJECT. THESE MATERIALS MAY BE PRINTED AND/OR TRANSFERRED ELECTRONICALLY SOLELY AS NEEDED BY THE USER, BECAUSE CAD/ELECTRONIC FILES AND BIM (BUILDING INFORMATION MODELING) FILES CAN BE MODIFIED BY OTHER PARTIES, WITHOUT NOTICE OR INDICATION OF SUCH MODIFICATIONS, MODIFICATION OF USG PRODUCT CAD AND/OR BIM DRAWINGS IS THE SOLE RESPONSIBILITY OF THE DESIGN PROFESSIONAL. ©2022 USG CORPORATION.



1 Perimeter No Trim - 9/16" Offset Cross Tee
6" = 1'-0"



USG Corporation
550 West Adams Street
Chicago, IL 60661 USA
www.usg.com

CEILINGS PLUS®

Design Solutions - ILLUSIONS® SYSTEM DETAILS - 1-1/2" FORMED METAL PANELS

ISSUE RECORD:

09/02/22

REV: DATE:

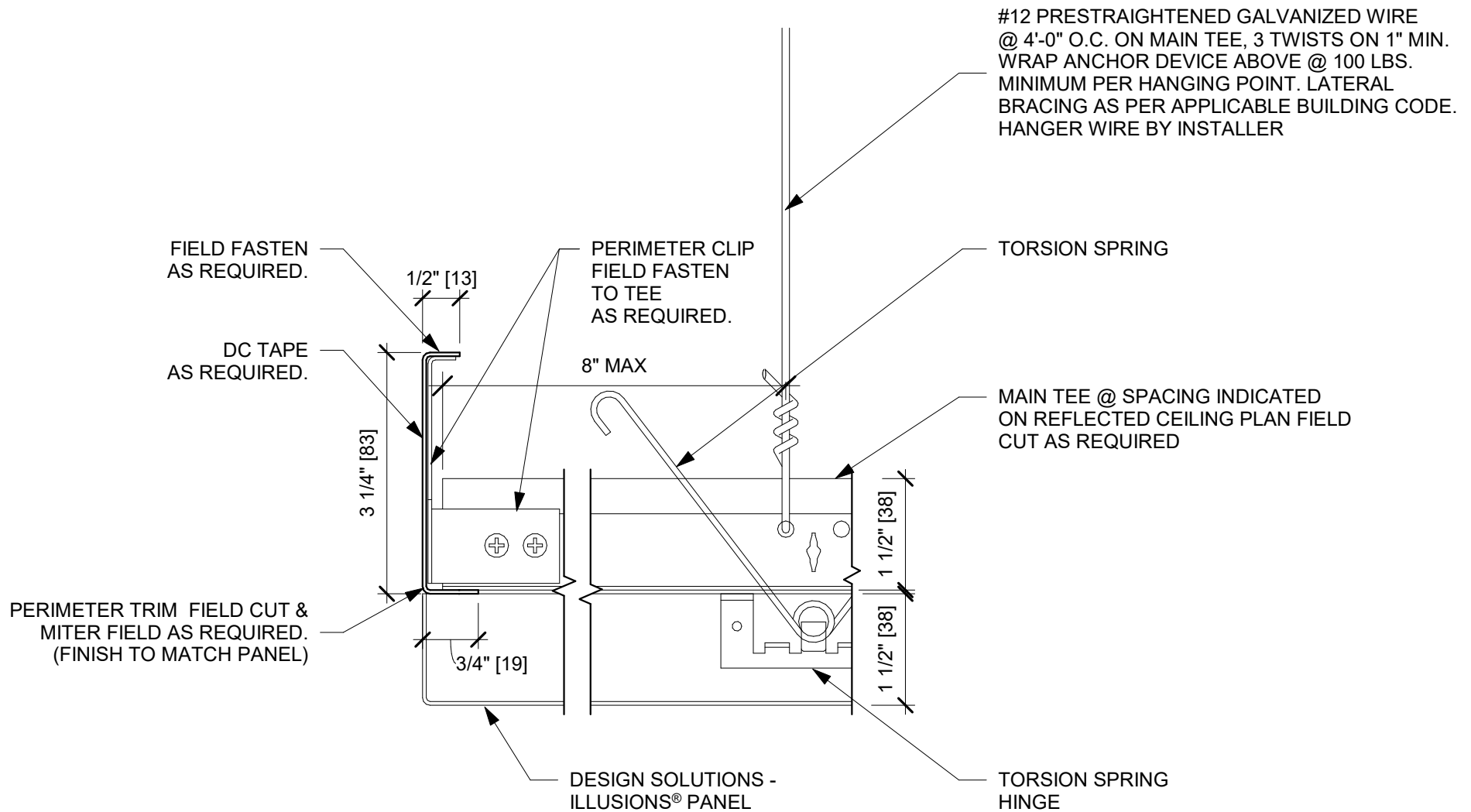
SHEET INFORMATION:

SCALE: 6" = 1'-0"

ILL-DS-PD12

PERIMETER DETAIL ILL_P10C

DISCLAIMER: THE USG PRODUCT DETAILS CONTAINED HEREIN ARE INTENDED FOR USE AS PRODUCT REFERENCE MATERIAL BY ARCHITECTS, ENGINEERS, OTHER DESIGN PROFESSIONALS, CONTRACTORS, BUILDING CODE OFFICIALS, OR OTHER COMPETENT CONSTRUCTION INDUSTRY TRADE PROFESSIONALS HAVING AN INTEREST IN THE SELECTION, SPECIFICATION AND USE OF PRODUCTS MANUFACTURED BY THE SUBSIDIARIES OF USG CORPORATION. THE DRAWINGS ARE INTENDED SOLELY AS TECHNICAL SUPPORT INCIDENT TO THE SALE AND USE OF USG PRODUCTS AND NOT INTENDED TO BE A SUBSTITUTE FOR THE DESIGN REVIEW AND APPROVAL OF THE LICENSED DESIGN PROFESSIONALS FOR THE PROJECT. THESE MATERIALS MAY BE PRINTED AND/OR TRANSFERRED ELECTRONICALLY SOLELY AS NEEDED BY THE USER, BECAUSE CAD/ELECTRONIC FILES AND BIM (BUILDING INFORMATION MODELING) FILES CAN BE MODIFIED BY OTHER PARTIES, WITHOUT NOTICE OR INDICATION OF SUCH MODIFICATIONS, MODIFICATION OF USG PRODUCT CAD AND/OR BIM DRAWINGS IS THE SOLE RESPONSIBILITY OF THE DESIGN PROFESSIONAL. ©2022 USG CORPORATION.



① Perimeter Floating 3-1/4" Trim - Main Tee
6" = 1'-0"



USG Corporation
550 West Adams Street
Chicago, IL 60661 USA
www.usg.com

CEILINGS PLUS®

Design Solutions - ILLUSIONS®
SYSTEM DETAILS - 1-1/2" FORMED METAL PANELS

ISSUE RECORD:

09/02/22

REV: DATE:

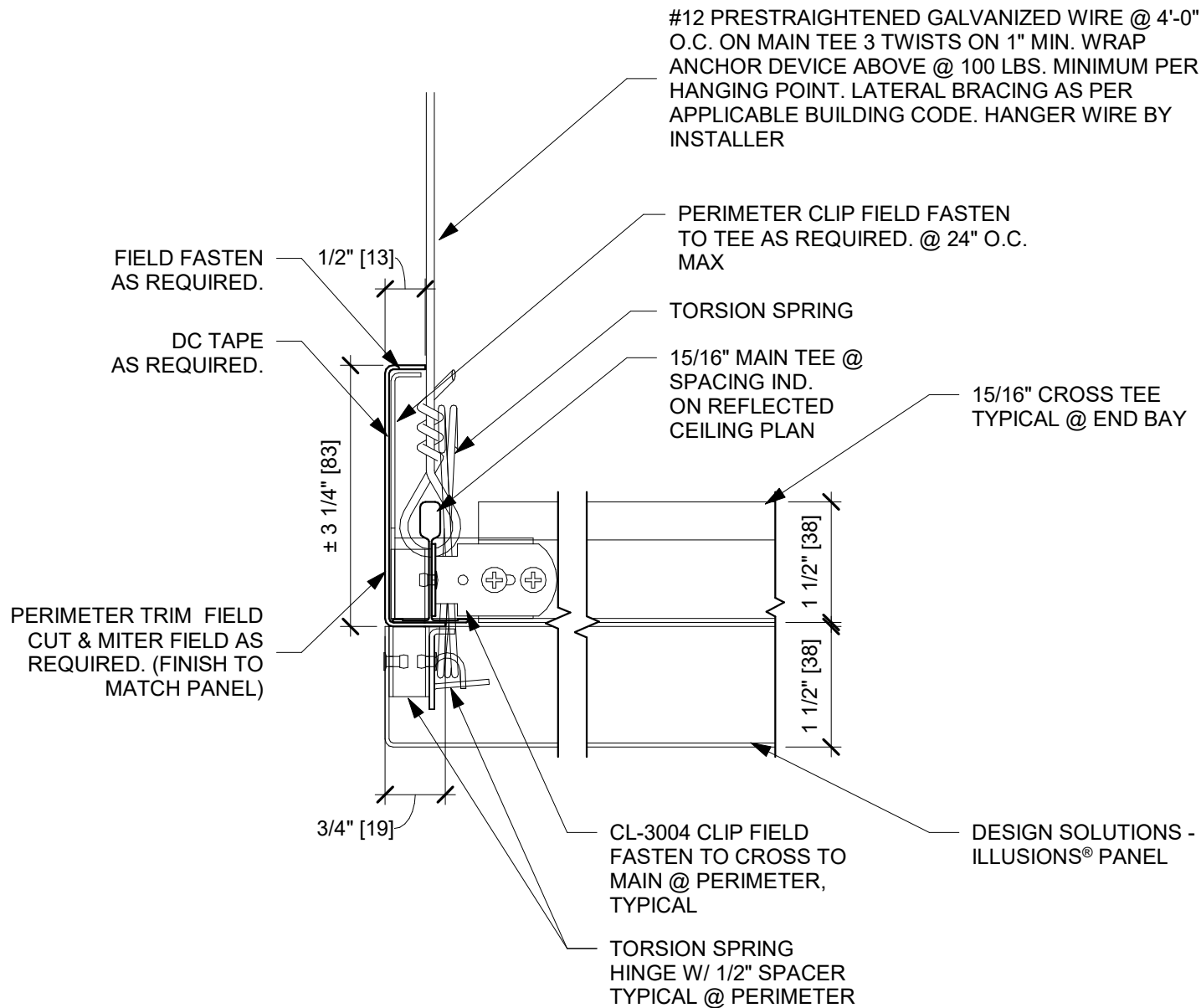
SHEET INFORMATION:

SCALE: 6" = 1'-0"

ILL-DS-PD13

PERIMETER DETAIL ILL_P16_17C

DISCLAIMER: THE USG PRODUCT DETAILS CONTAINED HEREIN ARE INTENDED FOR USE AS PRODUCT REFERENCE MATERIAL BY ARCHITECTS, ENGINEERS, OTHER DESIGN PROFESSIONALS, CONTRACTORS, BUILDING CODE OFFICIALS, OR OTHER COMPETENT CONSTRUCTION INDUSTRY TRADE PROFESSIONALS HAVING AN INTEREST IN THE SELECTION, SPECIFICATION AND USE OF PRODUCTS MANUFACTURED BY THE SUBSIDIARIES OF USG CORPORATION. THE DRAWINGS ARE INTENDED SOLELY AS TECHNICAL SUPPORT INCIDENT TO THE SALE AND USE OF USG PRODUCTS AND NOT INTENDED TO BE A SUBSTITUTE FOR THE DESIGN REVIEW AND APPROVAL OF THE LICENSED DESIGN PROFESSIONALS FOR THE PROJECT. THESE MATERIALS MAY BE PRINTED AND/OR TRANSFERRED ELECTRONICALLY SOLELY AS NEEDED BY THE USER, BECAUSE CAD/ELECTRONIC FILES AND BIM (BUILDING INFORMATION MODELING) FILES CAN BE MODIFIED BY OTHER PARTIES, WITHOUT NOTICE OR INDICATION OF SUCH MODIFICATIONS, MODIFICATION OF USG PRODUCT CAD AND/OR BIM DRAWINGS IS THE SOLE RESPONSIBILITY OF THE DESIGN PROFESSIONAL. ©2022 USG CORPORATION.



① Perimeter Floating 3-1/4" Trim Cross Tee with 1/2" Spacer
6" = 1'-0"



USG Corporation
550 West Adams Street
Chicago, IL 60661 USA
www.usg.com

CEILINGS PLUS®

Design Solutions - ILLUSIONS® SYSTEM DETAILS - 1-1/2" FORMED METAL PANELS

ISSUE RECORD:

09/02/22

REV: DATE:

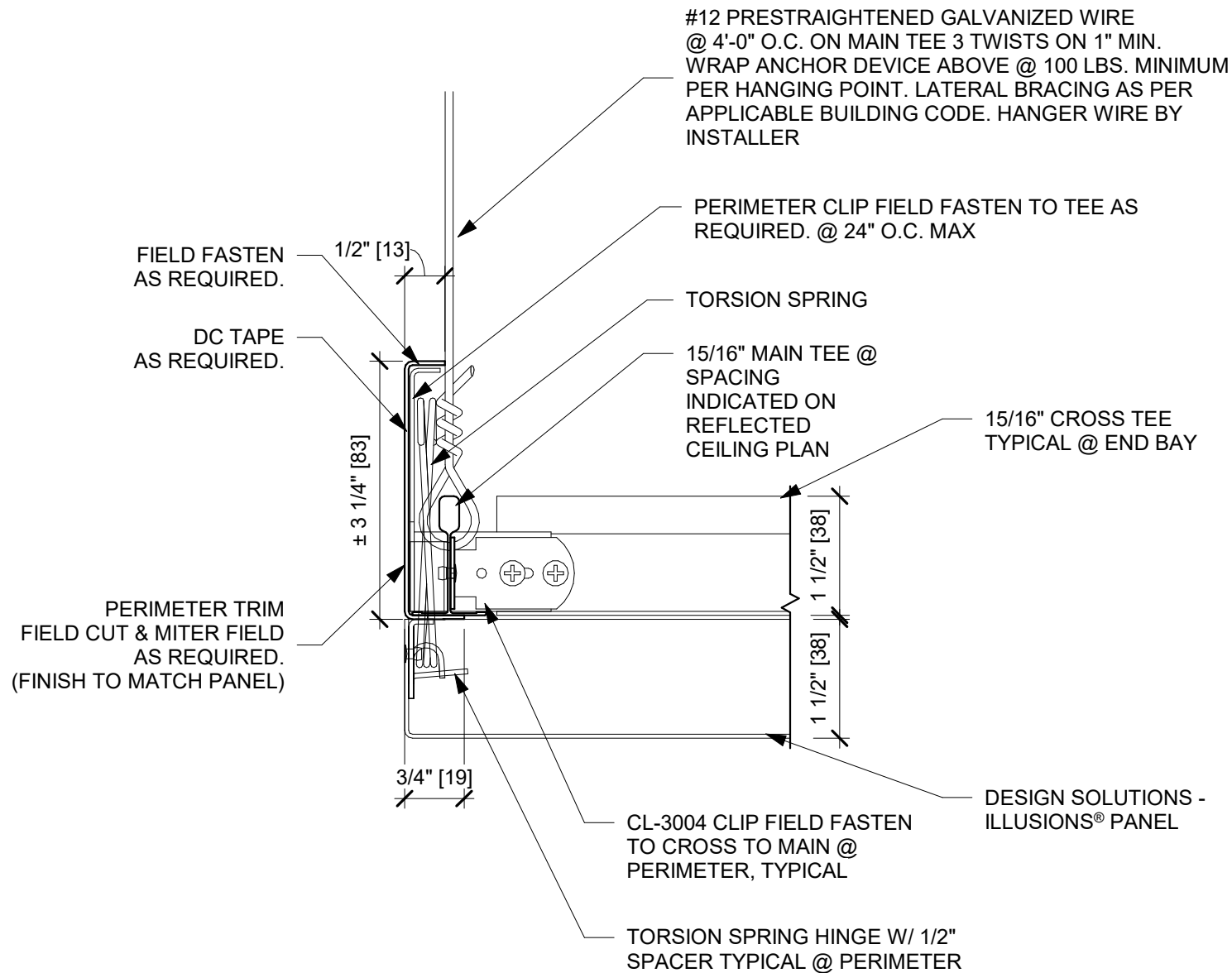
SHEET INFORMATION:

SCALE: 6" = 1'-0"

ILL-DS-PD14

PERIMETER DETAIL ILL_P16C

DISCLAIMER: THE USG PRODUCT DETAILS CONTAINED HEREIN ARE INTENDED FOR USE AS PRODUCT REFERENCE MATERIAL BY ARCHITECTS, ENGINEERS, OTHER DESIGN PROFESSIONALS, CONTRACTORS, BUILDING CODE OFFICIALS, OR OTHER COMPETENT CONSTRUCTION INDUSTRY TRADE PROFESSIONALS HAVING AN INTEREST IN THE SELECTION, SPECIFICATION AND USE OF PRODUCTS MANUFACTURED BY THE SUBSIDIARIES OF USG CORPORATION. THE DRAWINGS ARE INTENDED SOLELY AS TECHNICAL SUPPORT INCIDENT TO THE SALE AND USE OF USG PRODUCTS AND NOT INTENDED TO BE A SUBSTITUTE FOR THE DESIGN REVIEW AND APPROVAL OF THE LICENSED DESIGN PROFESSIONALS FOR THE PROJECT. THESE MATERIALS MAY BE PRINTED AND/OR TRANSFERRED ELECTRONICALLY SOLELY AS NEEDED BY THE USER, BECAUSE CAD/ELECTRONIC FILES AND BIM (BUILDING INFORMATION MODELING) FILES CAN BE MODIFIED BY OTHER PARTIES, WITHOUT NOTICE OR INDICATION OF SUCH MODIFICATIONS, MODIFICATION OF USG PRODUCT CAD AND/OR BIM DRAWINGS IS THE SOLE RESPONSIBILITY OF THE DESIGN PROFESSIONAL. ©2022 USG CORPORATION.



① Perimeter Floating 3-1/4" Trim - Cross Tee
6" = 1'-0"



USG Corporation
550 West Adams Street
Chicago, IL 60661 USA
www.usg.com

CEILINGS PLUS®

Design Solutions - ILLUSIONS®
SYSTEM DETAILS - 1-1/2" FORMED METAL PANELS

ISSUE RECORD:

09/02/22

REV: DATE:

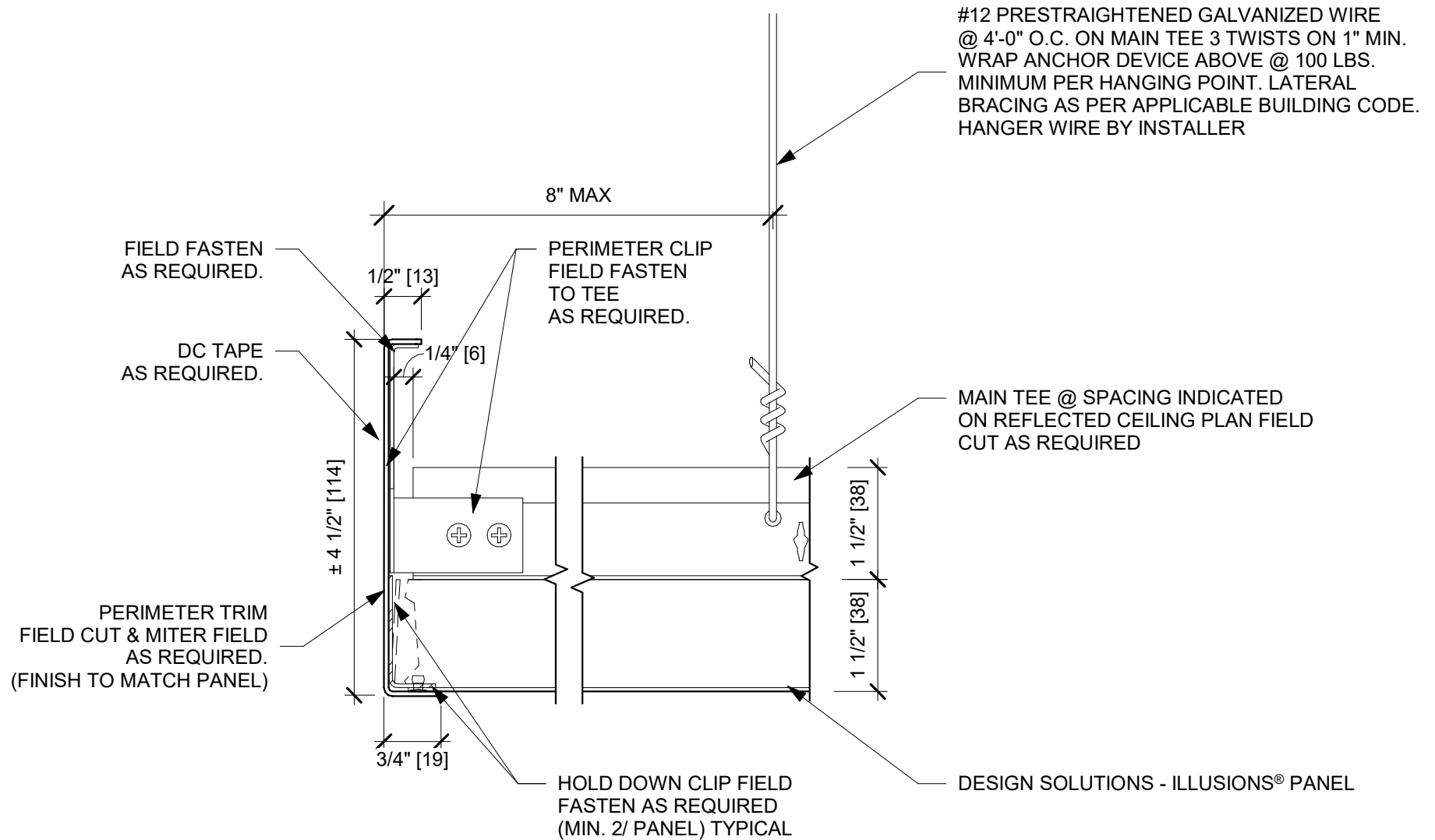
SHEET INFORMATION:

SCALE: 6" = 1'-0"

ILL-DS-PD15

PERIMETER DETAIL ILL_P16D

DISCLAIMER: THE USG PRODUCT DETAILS CONTAINED HEREIN ARE INTENDED FOR USE AS PRODUCT REFERENCE MATERIAL BY ARCHITECTS, ENGINEERS, OTHER DESIGN PROFESSIONALS, CONTRACTORS, BUILDING CODE OFFICIALS, OR OTHER COMPETENT CONSTRUCTION INDUSTRY TRADE PROFESSIONALS HAVING AN INTEREST IN THE SELECTION, SPECIFICATION AND USE OF PRODUCTS MANUFACTURED BY THE SUBSIDIARIES OF USG CORPORATION. THE DRAWINGS ARE INTENDED SOLELY AS TECHNICAL SUPPORT INCIDENT TO THE SALE AND USE OF USG PRODUCTS AND NOT INTENDED TO BE A SUBSTITUTE FOR THE DESIGN REVIEW AND APPROVAL OF THE LICENSED DESIGN PROFESSIONALS FOR THE PROJECT. THESE MATERIALS MAY BE PRINTED AND/OR TRANSFERRED ELECTRONICALLY SOLELY AS NEEDED BY THE USER. BECAUSE CAD/ELECTRONIC FILES AND BIM (BUILDING INFORMATION MODELING) FILES CAN BE MODIFIED BY OTHER PARTIES, WITHOUT NOTICE OR INDICATION OF SUCH MODIFICATIONS, MODIFICATION OF USG PRODUCT CAD AND/OR BIM DRAWINGS IS THE SOLE RESPONSIBILITY OF THE DESIGN PROFESSIONAL. ©2022 USG CORPORATION.



① Perimeter Floating 4-1/2" Trim - Field Cut Main Tee
6" = 1'-0"



USG Corporation
550 West Adams Street
Chicago, IL 60661 USA
www.usg.com

CEILINGS PLUS®

Design Solutions - ILLUSIONS®
SYSTEM DETAILS - 1-1/2" FORMED METAL PANELS

ISSUE RECORD:

09/02/22

REV: DATE:

SHEET INFORMATION:

SCALE: 6" = 1'-0"

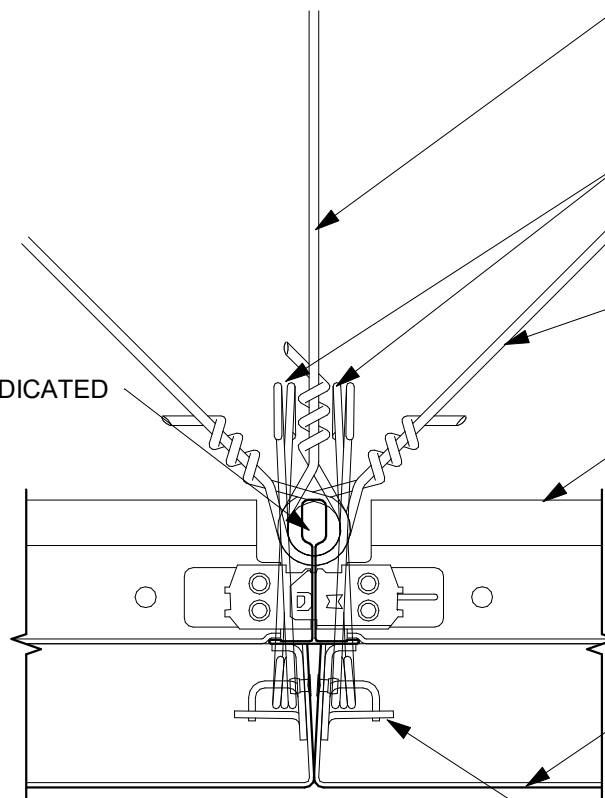
ILL-DS-PD16

PERIMETER DETAIL ILL_P20_21

DISCLAIMER: THE USG PRODUCT DETAILS CONTAINED HEREIN ARE INTENDED FOR USE AS PRODUCT REFERENCE MATERIAL BY ARCHITECTS, ENGINEERS, OTHER DESIGN PROFESSIONALS, CONTRACTORS, BUILDING CODE OFFICIALS, OR OTHER COMPETENT CONSTRUCTION INDUSTRY TRADE PROFESSIONALS HAVING AN INTEREST IN THE SELECTION, SPECIFICATION AND USE OF PRODUCTS MANUFACTURED BY THE SUBSIDIARIES OF USG CORPORATION. THE DRAWINGS ARE INTENDED SOLELY AS TECHNICAL SUPPORT INCIDENT TO THE SALE AND USE OF USG PRODUCTS AND NOT INTENDED TO BE A SUBSTITUTE FOR THE DESIGN REVIEW AND APPROVAL OF THE LICENSED DESIGN PROFESSIONALS FOR THE PROJECT. THESE MATERIALS MAY BE PRINTED AND/OR TRANSFERRED ELECTRONICALLY SOLELY AS NEEDED BY THE USER, BECAUSE CAD/ELECTRONIC FILES AND BIM (BUILDING INFORMATION MODELING) FILES CAN BE MODIFIED BY OTHER PARTIES, WITHOUT NOTICE OR INDICATION OF SUCH MODIFICATIONS, MODIFICATION OF USG PRODUCT CAD AND/OR BIM DRAWINGS IS THE SOLE RESPONSIBILITY OF THE DESIGN PROFESSIONAL. ©2022 USG CORPORATION.

15/16" MAIN TEE @ SPACING INDICATED
ON REFLECTED CEILING PLAN

1 1/2" [38]
1 1/2" [38]
1 1/2" [38]



#12 PRESTRAIGHTENED GALV. WIRE
@ 4'-0" O.C. ON MAIN TEE
3 TWISTS ON 1" MIN. WRAP ANCHOR
DEVICE ABOVE @ 100 LBS. MINIMUM
PER HANGING POINT. LATERAL BRACING
AS PER APPLICABLE BUILDING CODE.
HANGER WIRE BY INSTALLER

TORSION SPRING

SPLAY WIRING BY INSTALLER AS REQ'D.

15/16" CROSS TEE @ SPACING IND.
ON GRID PLAN

DESIGN SOLUTIONS - ILLUSIONS® PANEL

TORSION SPRING
HINGE, TYPICAL

① Panel Tight Joint - Cross Tee
6" = 1'-0"



USG Corporation
550 West Adams Street
Chicago, IL 60661 USA
www.usg.com

CEILINGS PLUS®

Design Solutions - ILLUSIONS® SYSTEM DETAILS - 1-1/2" FORMED METAL PANELS

ISSUE RECORD:

09/02/22

REV: DATE:

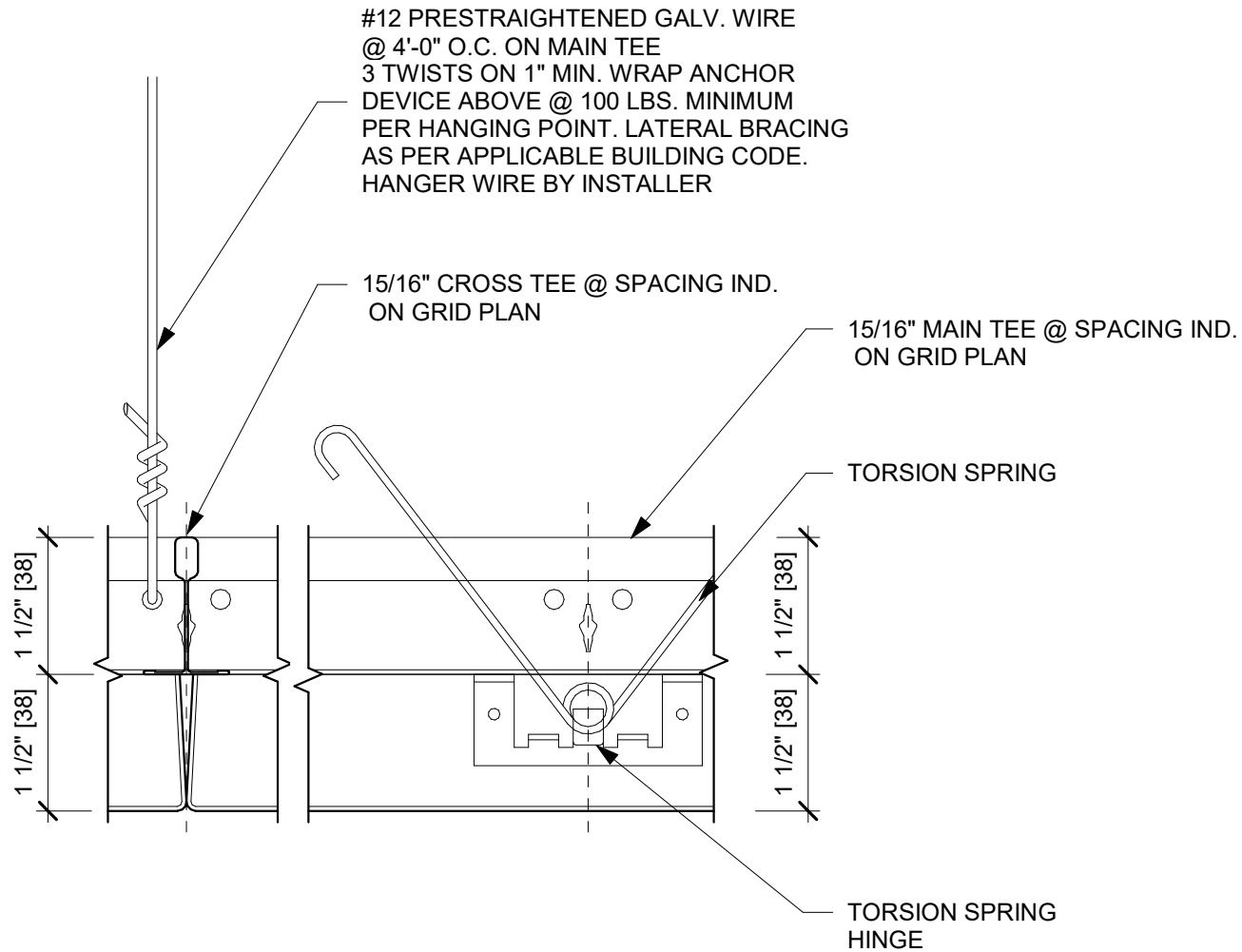
SHEET INFORMATION:

SCALE: 6" = 1'-0"

ILL-DS-PJ-01

PANEL JOINT DETAIL ILL-PJ01

DISCLAIMER: THE USG PRODUCT DETAILS CONTAINED HEREIN ARE INTENDED FOR USE AS PRODUCT REFERENCE MATERIAL BY ARCHITECTS, ENGINEERS, OTHER DESIGN PROFESSIONALS, CONTRACTORS, BUILDING CODE OFFICIALS, OR OTHER COMPETENT CONSTRUCTION INDUSTRY TRADE PROFESSIONALS HAVING AN INTEREST IN THE SELECTION, SPECIFICATION AND USE OF PRODUCTS MANUFACTURED BY THE SUBSIDIARIES OF USG CORPORATION. THE DRAWINGS ARE INTENDED SOLELY AS TECHNICAL SUPPORT INCIDENT TO THE SALE AND USE OF USG PRODUCTS AND NOT INTENDED TO BE A SUBSTITUTE FOR THE DESIGN REVIEW AND APPROVAL OF THE LICENSED DESIGN PROFESSIONALS FOR THE PROJECT. THESE MATERIALS MAY BE PRINTED AND/OR TRANSFERRED ELECTRONICALLY SOLELY AS NEEDED BY THE USER, BECAUSE CAD/ELECTRONIC FILES AND BIM (BUILDING INFORMATION MODELING) FILES CAN BE MODIFIED BY OTHER PARTIES, WITHOUT NOTICE OR INDICATION OF SUCH MODIFICATIONS, MODIFICATION OF USG PRODUCT CAD AND/OR BIM DRAWINGS IS THE SOLE RESPONSIBILITY OF THE DESIGN PROFESSIONAL. ©2022 USG CORPORATION.



1 Panel Tight Joint - Main Tee
6" = 1'-0"



USG Corporation
550 West Adams Street
Chicago, IL 60661 USA
www.usg.com

CEILINGS PLUS®

Design Solutions - ILLUSIONS®

SYSTEM DETAILS - 1-1/2" FORMED METAL PANELS

ISSUE RECORD:

09/02/22

REV: DATE:

SHEET INFORMATION:

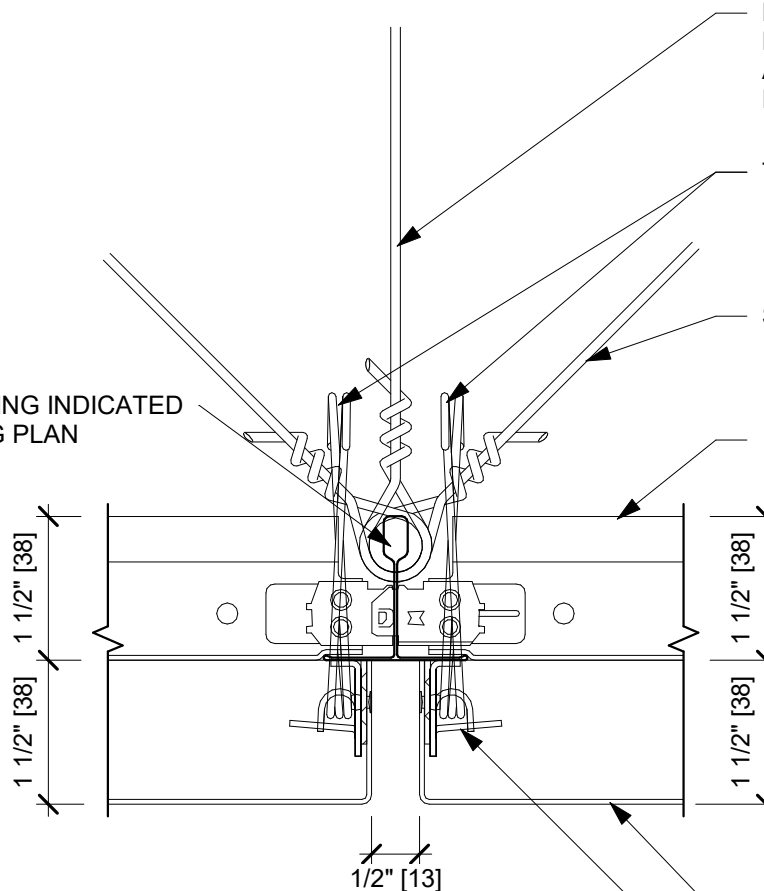
SCALE: 6" = 1'-0"

ILL-DS-PJ-01C

PANEL JOINT DETAIL ILL-PJ01C

DISCLAIMER: THE USG PRODUCT DETAILS CONTAINED HEREIN ARE INTENDED FOR USE AS PRODUCT REFERENCE MATERIAL BY ARCHITECTS, ENGINEERS, OTHER DESIGN PROFESSIONALS, CONTRACTORS, BUILDING CODE OFFICIALS, OR OTHER COMPETENT CONSTRUCTION INDUSTRY TRADE PROFESSIONALS HAVING AN INTEREST IN THE SELECTION, SPECIFICATION AND USE OF PRODUCTS MANUFACTURED BY THE SUBSIDIARIES OF USG CORPORATION. THE DRAWINGS ARE INTENDED SOLELY AS TECHNICAL SUPPORT INCIDENT TO THE SALE AND USE OF USG PRODUCTS AND NOT INTENDED TO BE A SUBSTITUTE FOR THE DESIGN REVIEW AND APPROVAL OF THE LICENSED DESIGN PROFESSIONALS FOR THE PROJECT. THESE MATERIALS MAY BE PRINTED AND/OR TRANSFERRED ELECTRONICALLY SOLELY AS NEEDED BY THE USER. BECAUSE CAD/ELECTRONIC FILES AND BIM (BUILDING INFORMATION MODELING) FILES CAN BE MODIFIED BY OTHER PARTIES, WITHOUT NOTICE OR INDICATION OF SUCH MODIFICATIONS, MODIFICATION OF USG PRODUCT CAD AND/OR BIM DRAWINGS IS THE SOLE RESPONSIBILITY OF THE DESIGN PROFESSIONAL. ©2022 USG CORPORATION.

1 1/2" MAIN TEE @ SPACING INDICATED
ON REFLECTED CEILING PLAN



#12 PRESTRAIGHTENED GALV. WIRE
@ 4'-0" O.C. ON MAIN TEE
3 TWISTS ON 1" MIN. WRAP ANCHOR
DEVICE ABOVE @ 100 LBS. MINIMUM
PER HANGING POINT. LATERAL BRACING
AS PER APPLICABLE BUILDING CODE.
HANGER WIRE BY INSTALLER

TORSION SPRING

SPLAY WIRING BY INSTALLER AS REQUIRED

1 1/2" CROSS TEE @ SPACING INDICATED
ON REFLECTED CEILING PLAN

DESIGN SOLUTIONS - ILLUSIONS® PANEL

TORSION SPRING
HINGE

1 Panel Joint 1/2" Reveal with 1/16" Spacer - Cross Tee
6" = 1'-0"



USG Corporation
550 West Adams Street
Chicago, IL 60661 USA
www.usg.com

CEILINGS PLUS®

Design Solutions - ILLUSIONS® SYSTEM DETAILS - 1-1/2" FORMED METAL PANELS

ISSUE RECORD:

09/02/22

REV: DATE:

SHEET INFORMATION:

SCALE: 6" = 1'-0"

ILL-DS-PJ-02

PANEL JOINT DETAIL ILL-PJ02

DISCLAIMER: THE USG PRODUCT DETAILS CONTAINED HEREIN ARE INTENDED FOR USE AS PRODUCT REFERENCE MATERIAL BY ARCHITECTS, ENGINEERS, OTHER DESIGN PROFESSIONALS, CONTRACTORS, BUILDING CODE OFFICIALS, OR OTHER COMPETENT CONSTRUCTION INDUSTRY TRADE PROFESSIONALS HAVING AN INTEREST IN THE SELECTION, SPECIFICATION AND USE OF PRODUCTS MANUFACTURED BY THE SUBSIDIARIES OF USG CORPORATION. THE DRAWINGS ARE INTENDED SOLELY AS TECHNICAL SUPPORT INCIDENT TO THE SALE AND USE OF USG PRODUCTS AND NOT INTENDED TO BE A SUBSTITUTE FOR THE DESIGN REVIEW AND APPROVAL OF A LICENSED DESIGN PROFESSIONAL FOR THE PROJECT. THESE MATERIALS MAY BE PRINTED AND/OR TRANSFERRED ELECTRONICALLY SOLELY AS NEEDED BY THE USER. BECAUSE CAD/ELECTRONIC FILES AND BIM (BUILDING INFORMATION MODELING) FILES CAN BE MODIFIED BY OTHER PARTIES, WITHOUT NOTICE OR INDICATION OF SUCH MODIFICATIONS, MODIFICATION OF USG PRODUCT CAD AND/OR BIM DRAWINGS IS THE SOLE RESPONSIBILITY OF THE DESIGN PROFESSIONAL. ©2022 USG CORPORATION.

3 TWISTS ON 1" MIN. WRAP ANCHOR
DEVICE ABOVE @ 100 LBS. MINIMUM
PER HANGING POINT. LATERAL BRACING
AS PER APPLICABLE BUILDING CODE.
HANGER WIRE BY INSTALLER

1 1/2" CROSS TEE @
SPACING INDICATED ON
REFLECTED CEILING PLAN

ALIGNMENT PLUG FACTORY ATTACHED
TO MAIN FOR PROPER PANEL ALIGNMENT

1 1/2" MAIN TEE @ SPACING INDICATED
ON REFLECTED CEILING PLAN

TORSION SPRING

1 1/2" [38]
1 1/2" [38]
1 1/2" [38]

1/2" [13]

DESIGN SOLUTIONS - ILLUSIONS® PANEL

TORSION SPRING
REVEAL HINGE



USG Corporation
550 West Adams Street
Chicago, IL 60661 USA
www.usg.com

Design Solutions - ILLUSIONS®

SYSTEM DETAILS - 1-1/2" FORMED METAL PANELS

PANEL JOINT DETAIL ILL-PJ-02C

NOTICE: THE USER PRODUCT DETAILS CONTAINED HEREIN ARE INTENDED FOR USE AS PRODUCT REFERENCES ONLY BY ARCHITECTS, ENGINEERS, OTHER COMPETENT CONSTRUCTION TRADE PROFESSIONALS, CONTRACTORS, BUILDING CODE OFFICIALS, OR OTHER COMPETENT CONSTRUCTION TRADE PROFESSIONALS HAVING AN INTEREST IN THE SELECTION, SPECIFICATION AND USE OF PRODUCTS MANUFACTURED BY THE SUBSIDIARIES OF USG CORPORATION. THE DRAWINGS ARE INTENDED SOLELY AS TECHNICAL SUPPORT INCIDENT TO THE SALE AND USE OF USG PRODUCTS AND NOT INTENDED TO BE A SUBSTITUTE FOR THE DESIGN REVIEW AND APPROVAL OF THE LICENSED DESIGN PROFESSIONALS FOR THE PROJECT. THESE MATERIALS MAY BE PRINTED AND/OR TRANSFERRED ELECTRONICALLY SOLELY AS NEEDED BY THE USER, BECAUSE EACH PRODUCT HAS ITS OWN BUILDING INFORMATION MODELING (BIM) FILES CAN BE MODIFIED BY OTHER PARTIES, WITHOUT NOTICE OR INDICATION OF SUCH MODIFICATIONS. MODIFICATION OF USG PRODUCT CAD AND/OR BIM DRAWINGS IS THE SOLE RESPONSIBILITY OF THE DESIGN PROFESSIONAL. ©2022 USG CORPORATION.