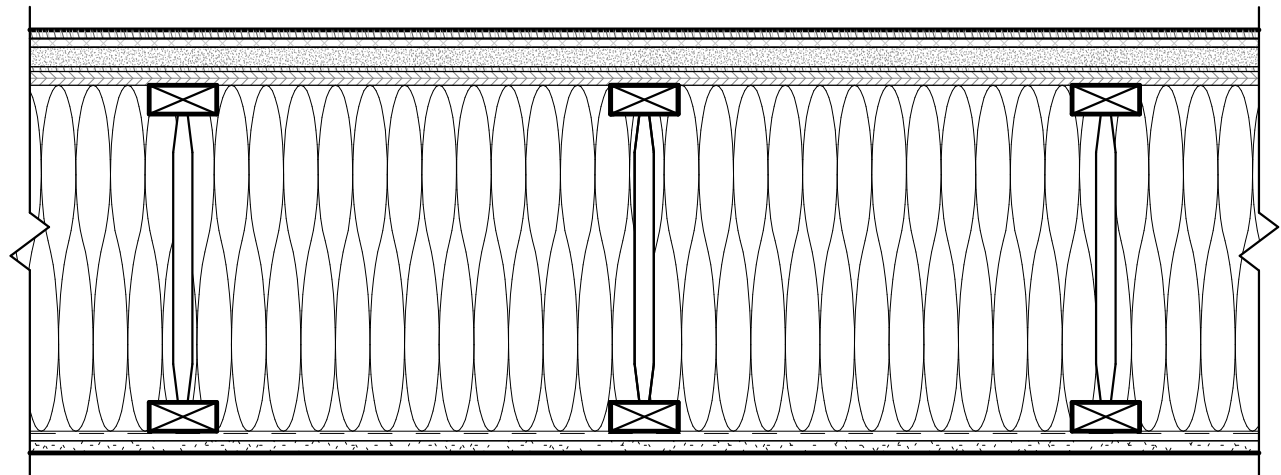


DESIGN NO.

UL L521, UL L550, UL L563

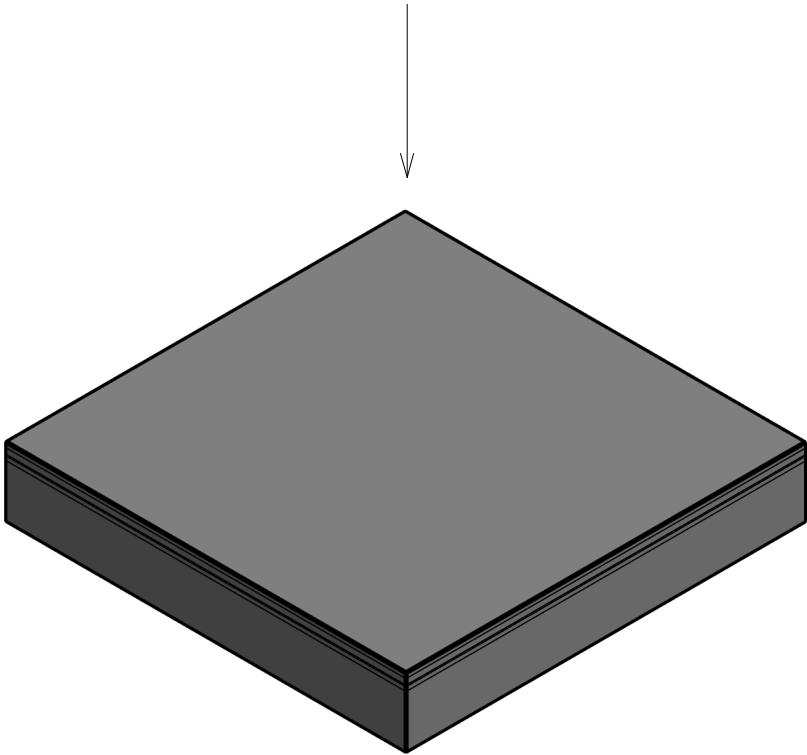
FIRE RATING	1 HOUR
CONSTRUCTION TYPE	18" [457 MM] WOOD TRUSS
SOUND TRANSMISSION CLASS (STC)	60
IMPACT INSULATION CLASS (IIC)	79
SOUND TEST	G9878.06
SYSTEM THICKNESS (INCHES)	21.99 IN.
SYSTEM THICKNESS (MM)	559 MM



ASSEMBLY REQUIREMENTS:

FINISH FLOORING:	1/2" [12.7 MM] CLOSED LOOP CARPET WITH 0.4" [10 MM] 7# FOAM CARPET PAD (BY OTHERS)
SUBFLOOR TOPPING MIXTURE:	1" [25.4 MM] USG LEVELROCK® BRAND 2500 SERIES FLOOR UNDERLAYMENTS
SOUND ATTENUATION MAT:	1/4" [6.35 MM] USG LEVELROCK® SAM-N25™ SOUND ATTENUATION MAT
SUBFLOOR:	23/32" [18.2 MM] WOOD STRUCTURAL PANEL
STRUCTURE:	18" [457 MM] PARALLEL CHORD OPEN WEB WOOD TRUSSES, AT 24" [610 MM] O.C.
INSULATION:	18" [457 MM] BLOWN-IN FIBERGLASS INSULATION
RESILIENT CHANNEL:	1/2" [12.7 MM] RESILIENT CHANNEL, 25 GA. (0.018"), SPACED 16" [406 MM] O.C. MAX.
GYPSUM PANEL:	5/8" [15.9 MM] SHEETROCK® ECOSMART GYPSUM PANEL (UL TYPE ULIX™)

Revit System Family
(Copy & Paste into your Revit project)



GENERAL FLOOR CEILING NOTES:

- FOR THE MOST UP-TO-DATE DETAILS, INCLUDING CONSTRUCTION VARIATIONS, REFER TO THE PUBLISHED ASSEMBLY IN THE UL PRODUCT IQ™ DATABASE OR GA DESIGN MANUAL.
- FRAMING SIZES AND INSULATION THICKNESS ARE MINIMUM UNLESS OTHERWISE STATED IN THE PUBLISHED ASSEMBLY.
- FRAMING AND FASTENER SPACINGS ARE MAXIMUM UNLESS OTHERWISE STATED IN THE PUBLISHED ASSEMBLY.
- PANEL ORIENTATION SHALL BE AS SPECIFIED IN THE PUBLISHED ASSEMBLY.
- REFER TO APPLICABLE CODES REQUIREMENTS TO ENSURE COMPLIANCE PRIOR TO CONSTRUCTION.
- WHERE ACOUSTICAL PERFORMANCE IS PROVIDED IN AN ESTIMATED RANGE, THE VALUES ARE BASED ON LABORATORY TEST DATA OF SIMILARLY CONSTRUCTED ASSEMBLIES.
- WHERE DESIGN NO. INDICATES "PER", THE FIRE RATING IS BASED ON LABORATORY TEST DATA OF THE REFERENCED SIMILARLY CONSTRUCTED ASSEMBLIES.

ISSUE RECORD:

Revision Date:
5.27.2022
Print Date:
22/07/2022 9:52:47 PM

ID: 10033

SHEET INFORMATION:

FC-WJ-1-31