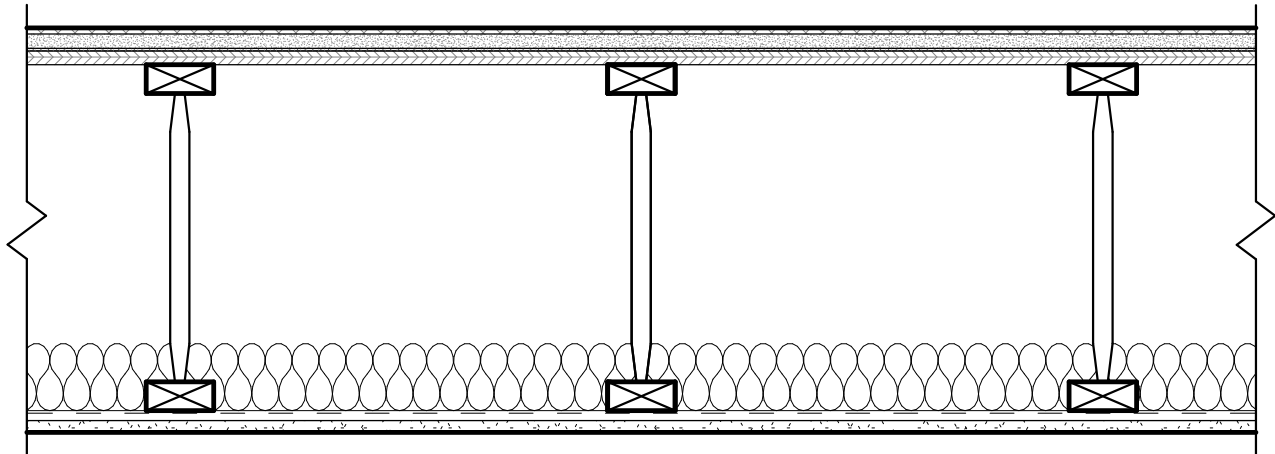


DESIGN NO.

UL L521, UL L550, UL L563

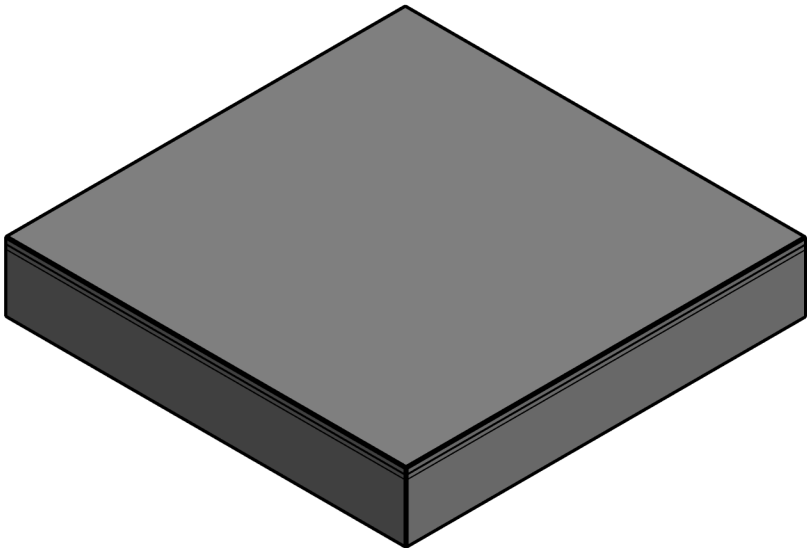
FIRE RATING	1 HOUR
CONSTRUCTION TYPE	18" [457 MM] WOOD TRUSS
SOUND TRANSMISSION CLASS (STC)	59
IMPACT INSULATION CLASS (IIC)	51
SOUND TEST	G9876.05
SYSTEM THICKNESS (INCHES)	21.03 IN.
SYSTEM THICKNESS (MM)	534 MM



ASSEMBLY REQUIREMENTS:

FINISH FLOORING:	0.31" [8 MM] CERAMIC TILE (BY OTHERS)
SUBFLOOR TOPPING MIXTURE:	3/4" [19 MM] USG LEVELROCK® BRAND 2500 SERIES FLOOR UNDERLAYMENTS
SOUND ATTENUATION MAT:	1/8" [3.2 MM] USG LEVELROCK® SAM-N12™ SOUND ATTENUATION MAT
SUBFLOOR:	23/32" [18.2 MM] WOOD STRUCTURAL PANEL
STRUCTURE:	18" [457 MM] PARALLEL CHORD OPEN WEB WOOD TRUSSES, AT 24" [610 MM] O.C.
INSULATION:	3-1/2" [89 MM] GLASS FIBER BATT INSULATION, SUPPORTED BY RESILIENT CHANNEL
RESILIENT CHANNEL:	1/2" [12.7 MM] RESILIENT CHANNEL, 25 GA. (0.018"), SPACED 16" [406 MM] O.C. MAX.
GYPSUM PANEL:	5/8" [15.9 MM] SHEETROCK® ECOSMART GYPSUM PANEL (UL TYPE ULIX™)

Revit System Family
(Copy & Paste into your Revit project)



GENERAL FLOOR CEILING NOTES:

- FOR THE MOST UP-TO-DATE DETAILS, INCLUDING CONSTRUCTION VARIATIONS, REFER TO THE PUBLISHED ASSEMBLY IN THE UL PRODUCT IQ™ DATABASE OR GA DESIGN MANUAL.
- FRAMING SIZES AND INSULATION THICKNESS ARE MINIMUM UNLESS OTHERWISE STATED IN THE PUBLISHED ASSEMBLY.
- FRAMING AND FASTENER SPACINGS ARE MAXIMUM UNLESS OTHERWISE STATED IN THE PUBLISHED ASSEMBLY.
- PANEL ORIENTATION SHALL BE AS SPECIFIED IN THE PUBLISHED ASSEMBLY.
- REFER TO APPLICABLE CODES REQUIREMENTS TO ENSURE COMPLIANCE PRIOR TO CONSTRUCTION.
- WHERE ACOUSTICAL PERFORMANCE IS PROVIDED IN AN ESTIMATED RANGE, THE VALUES ARE BASED ON LABORATORY TEST DATA OF SIMILARLY CONSTRUCTED ASSEMBLIES.
- WHERE DESIGN NO. INDICATES "PER", THE FIRE RATING IS BASED ON LABORATORY TEST DATA OF THE REFERENCED SIMILARLY CONSTRUCTED ASSEMBLIES.

ISSUE RECORD:

Revision Date:
5.27.2022
Print Date:
22/07/2022 9:51:32 PM

ID: 10014

SHEET INFORMATION:

FC-WJ-1-43