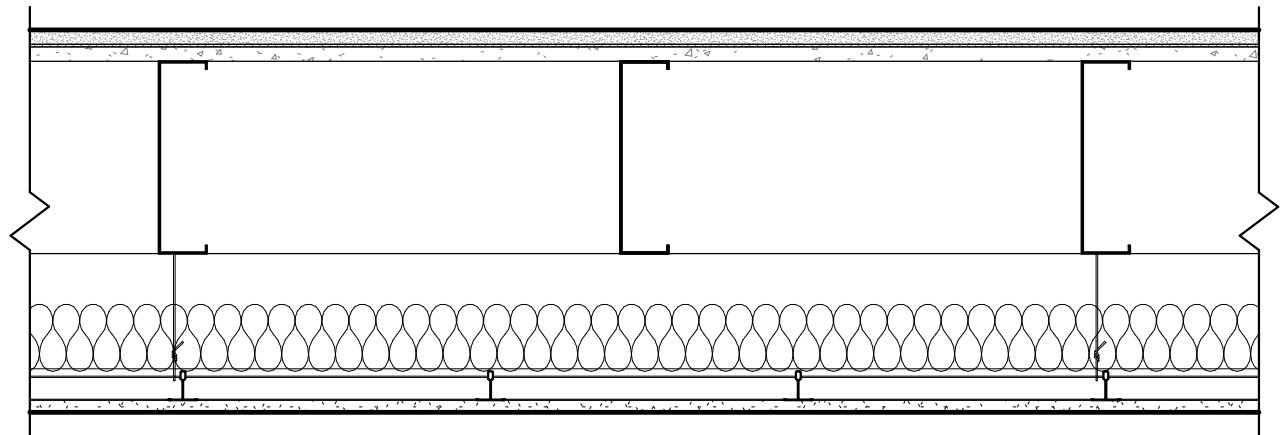


DESIGN NO.

UL G556

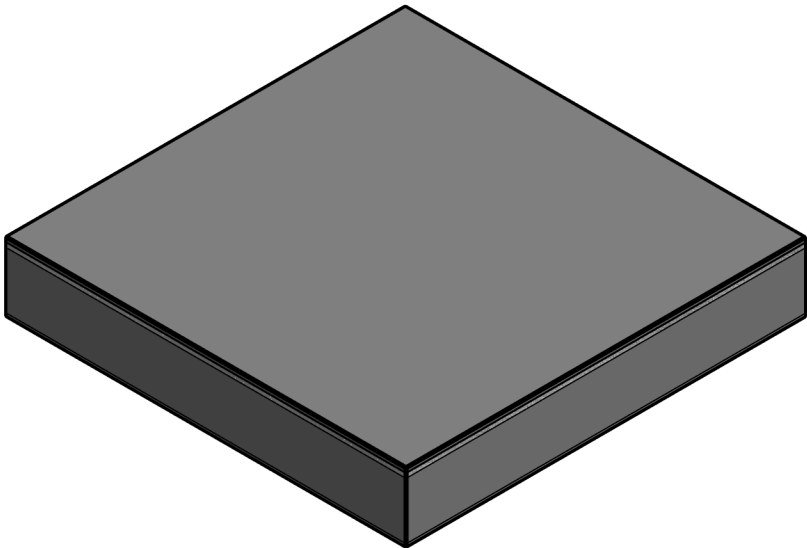
FIRE RATING	2 HOURS
CONSTRUCTION TYPE	10" [254 MM] STEEL C-JOIST
SOUND TRANSMISSION CLASS (STC)	N/A
IMPACT INSULATION CLASS (IIC)	n/a
SOUND TEST	N/A
SYSTEM THICKNESS (INCHES)	19.88 IN.
SYSTEM THICKNESS (MM)	505 MM



ASSEMBLY REQUIREMENTS:

SUBFLOOR TOPPING MIXTURE:	3/4" [19 MM] USG LEVELROCK® BRAND 2500 SERIES FLOOR UNDERLAYMENTS
SOUND ATTENUATION MAT:	1/8" [3.2 MM] USG LEVELROCK® SAM-N12™ SOUND ATTENUATION MAT
STRUCTURAL CEMENT-FIBER UNIT:	3/4" [19 MM] STRUCTO-CRETE® PANEL (UL TYPES USGSP, STRUCTO-CRETE)
STRUCTURE:	10" [254 MM] STEEL C-JOISTS, 1-5/8" [41 MM] WIDE FLANGES MIN., 16 GA. (0.054"), SPACED 24" [610 MM] O.C.
INSULATION:	3-1/2" [89 MM] GLASS FIBER BATT INSULATION, SUPPORTED BY RESILIENT CHANNEL
STEEL FRAMING MEMBERS:	USG DRYWALL SUSPENSION SYSTEM (UL TYPE DGL) WITH A CLEAR PLENUM OF 6" [152 MM]
DWSS MAIN RUNNERS:	DRYWALL MAIN TEES SUSPENDED BY 12 GA. MIN. HANGER WIRE, 4'-0" [1220 MM] O.C.
DWSS CROSS TEES:	DRYWALL SUSPENSION CROSS TEES AT 16" [406 MM] OC
GYPSUM PANEL:	5/8" [15.9 MM] SHEETROCK® ECOSMART GYPSUM PANEL (UL TYPE ULIX™)

Revit System Family  
(Copy & Paste into your Revit project)



GENERAL FLOOR CEILING NOTES:

- FOR THE MOST UP-TO-DATE DETAILS, INCLUDING CONSTRUCTION VARIATIONS, REFER TO THE PUBLISHED ASSEMBLY IN THE UL PRODUCT IQ™ DATABASE OR GA DESIGN MANUAL.
- FRAMING SIZES AND INSULATION THICKNESS ARE MINIMUM UNLESS OTHERWISE STATED IN THE PUBLISHED ASSEMBLY.
- FRAMING AND FASTENER SPACINGS ARE MAXIMUM UNLESS OTHERWISE STATED IN THE PUBLISHED ASSEMBLY.
- PANEL ORIENTATION SHALL BE AS SPECIFIED IN THE PUBLISHED ASSEMBLY.
- REFER TO APPLICABLE CODES REQUIREMENTS TO ENSURE COMPLIANCE PRIOR TO CONSTRUCTION.
- WHERE ACOUSTICAL PERFORMANCE IS PROVIDED IN AN ESTIMATED RANGE, THE VALUES ARE BASED ON LABORATORY TEST DATA OF SIMILARLY CONSTRUCTED ASSEMBLIES.
- WHERE DESIGN NO. INDICATES "PER", THE FIRE RATING IS BASED ON LABORATORY TEST DATA OF THE REFERENCED SIMILARLY CONSTRUCTED ASSEMBLIES.

ISSUE RECORD:

Revision Date:  
5.27.2022  
Print Date:  
22/07/2022 9:50:46 PM

ID: 10002

SHEET INFORMATION:

FC-SJ-2-61