

INSTALLATION INSTRUCTIONS

1. UNPACK MATERIALS AND FAMILIARIZE YOURSELF WITH ASSEMBLED UNITS AND MISCELLANEOUS PARTS BY LOCATING EACH ON THE SHOP DRAWINGS.
2. VERIFY CONDITIONS AND MEASUREMENTS AFFECTING THE WORK OF THIS SECTION AT THE SITE. MAKE SURE THAT DETRIMENTAL CONDITIONS ARE CORRECTED PRIOR TO PROCEEDING WITH INSTALLATION.
3. INSTALL PERIMETER TRIM (AS REQ.'D) AT THE ELEVATION INDICATED ON THE ARCHITECTURAL DRAWINGS.
4. INSTALL SUSPENSION SYSTEM FOLLOWING REFERENCED STANDARDS PER SPECIFICATIONS, ASTM 636 AND SHOP DRAWINGS; SATISFYING APPLICABLE BUILDING CODES. THE SUPPORT MEMBER SHALL BE SUSPENDED FROM HANGERS SPACED AS SHOWN ON RESPECTIVE GRID PLANS. WHERE MECHANICAL AND ELECTRICAL WORK INTERFERE WITH SPACING OF REQUIRED HANGERS, PROVIDE ADDITIONAL HANGERS AND CHANNELS MAKING NECESSARY ADJUSTMENTS TO THE CEILING SUPPORT SYSTEM.
5. SEISMIC INSTALLATION BY INSTALLING CONTRACTOR SHALL BE IN ACCORDANCE WITH ALL GOVERNING CODES. FLOATING SYSTEMS WILL REQUIRE LATERAL BRACING TO PROPERLY SECURE & MAINTAIN CEILING GRID TO BE SQUARE & LEVEL.
REF. "**LATERAL BRACING**" DETAIL
6. WHERE FIELD CUTTING IS REQUIRED, NEATLY CUT AND REINFORCE OPENINGS IN METAL PANELS. FOLLOW MANUFACTURING RECOMMENDATIONS AS NOTED.
7. PANELS, SUSPENSION SYSTEM COMPONENTS, AND ACCESSORIES TO BE STORED IN ORIGINAL, UNOPENED PACKAGES IN A FULLY ENCLOSED, CONDITIONED SPACE WHERE THEY WILL BE PROTECTED AGAINST DAMAGE FROM MOISTURE, HUMIDITY, TEMPERATURE EXTREMES, DIRECT SUNLIGHT, SURFACE CONTAMINATION, AND OTHER CAUSES.
8. INSTALL PANELS ONLY AFTER SPACE IS CLEAR FROM DUST.

CONTACT "CEILINGS PLUS" @ (323)724-8166 IF YOU ENCOUNTER DIFFICULTY OR REQUIRE ASSISTANCE.



USG Corporation
550 West Adams Street, Chicago, IL 60661-3676 1.800-USG4YOU

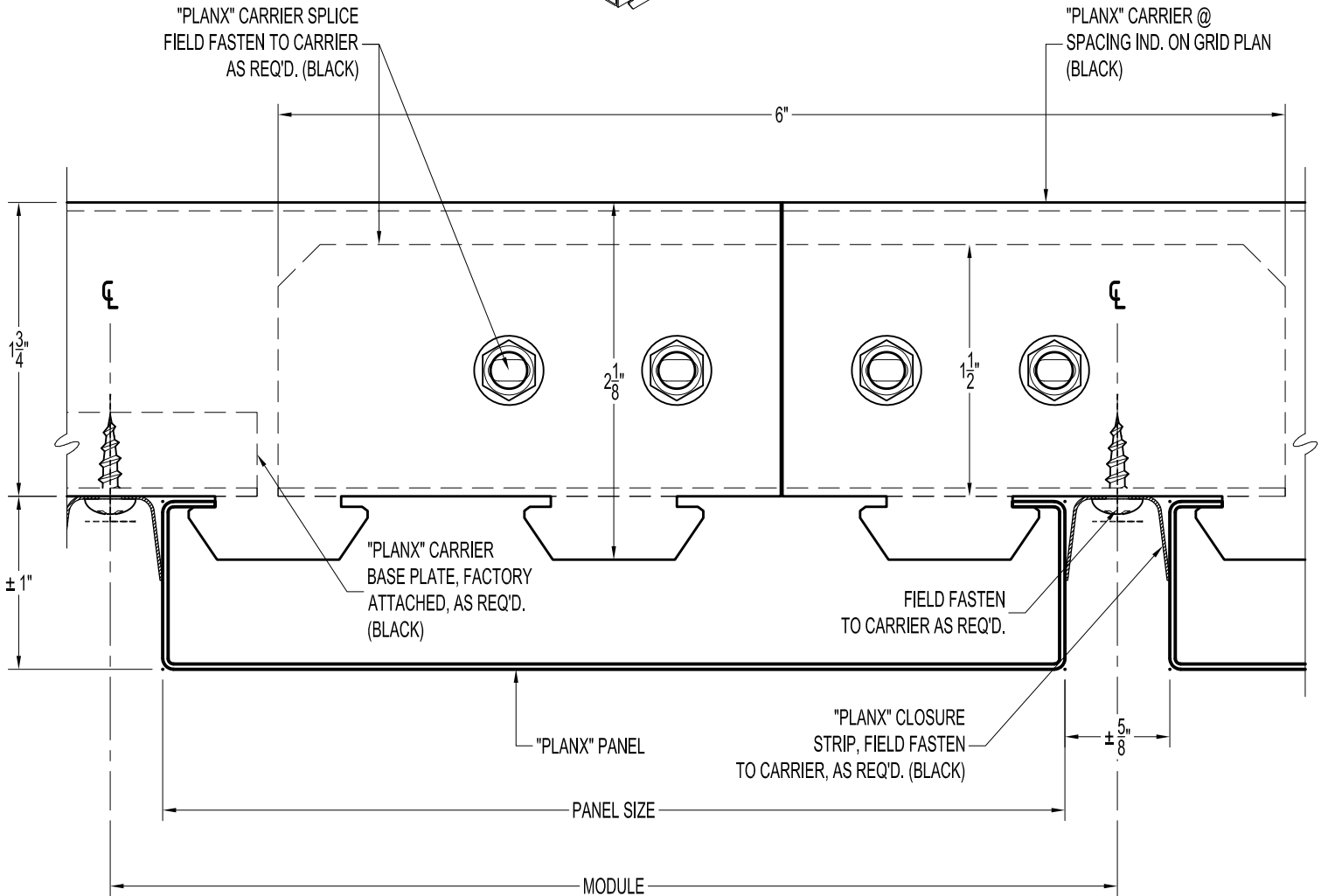
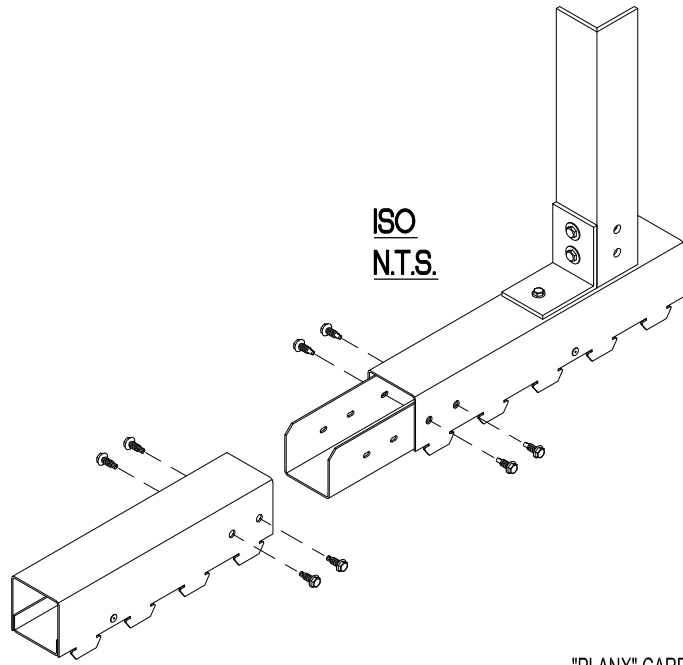
EXTERIOR PLANX™ SYSTEM DETAILS

Installation Note

SHEET: EX-PLANX-INST

SCALE: 1:1

ISSUE DATE: 2/17/2022



CEILINGSPUS®

USG Corporation
550 West Adams Street, Chicago, IL 60661-3676 1.800-USG4YOU

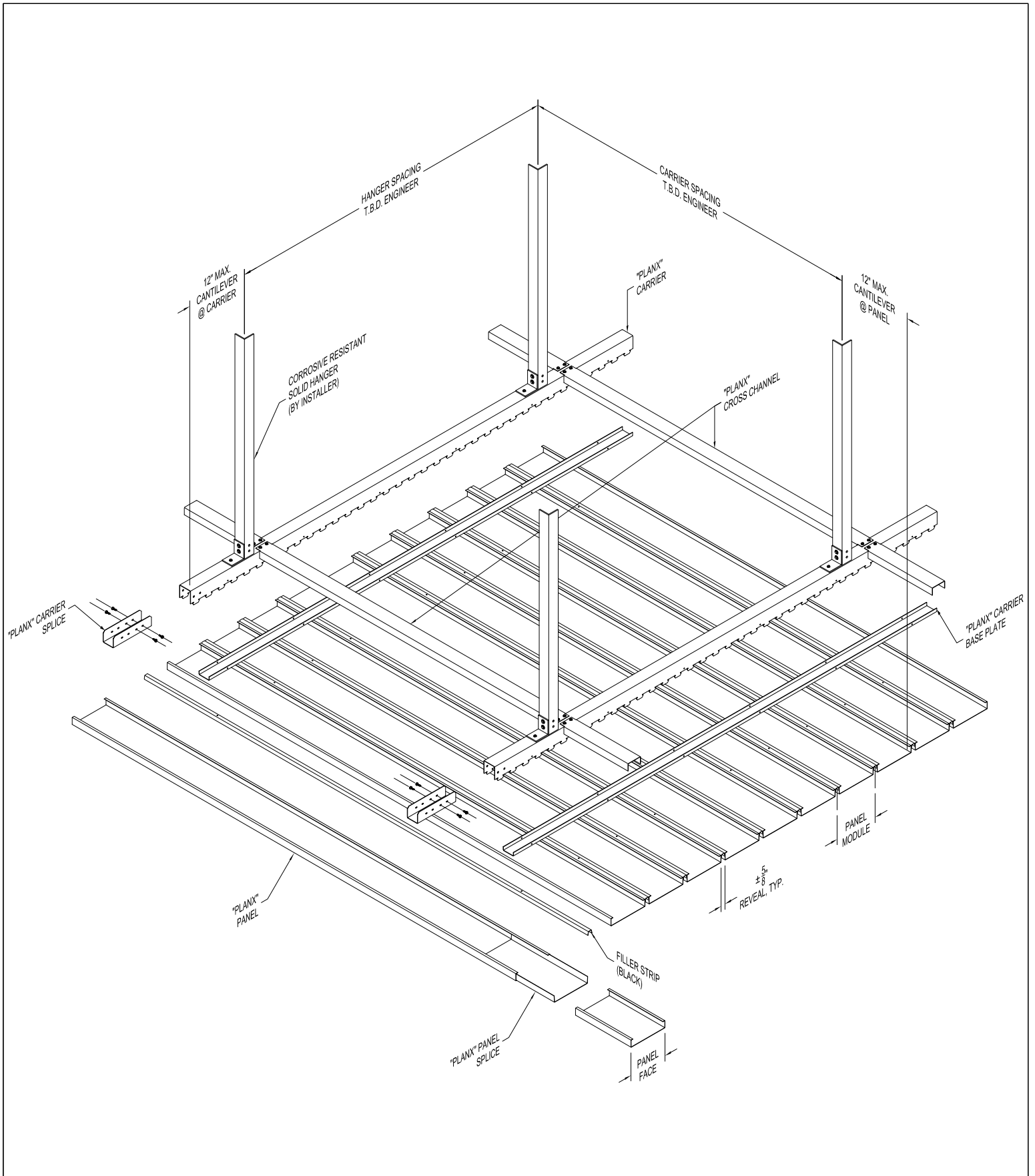
EXTERIOR PLANX™ SYSTEM DETAILS

"PLANX" Exterior Ceiling Panel - Grid Splice

SHEET: EX-PLANX-GSPLICE

SCALE: 1:1

ISSUE DATE: 2/17/2022



CEILINGS PLUS®

USG Corporation
550 West Adams Street, Chicago, IL 60661-3676 1.800-USG4YOU

EXTERIOR PLANX™ SYSTEM DETAILS

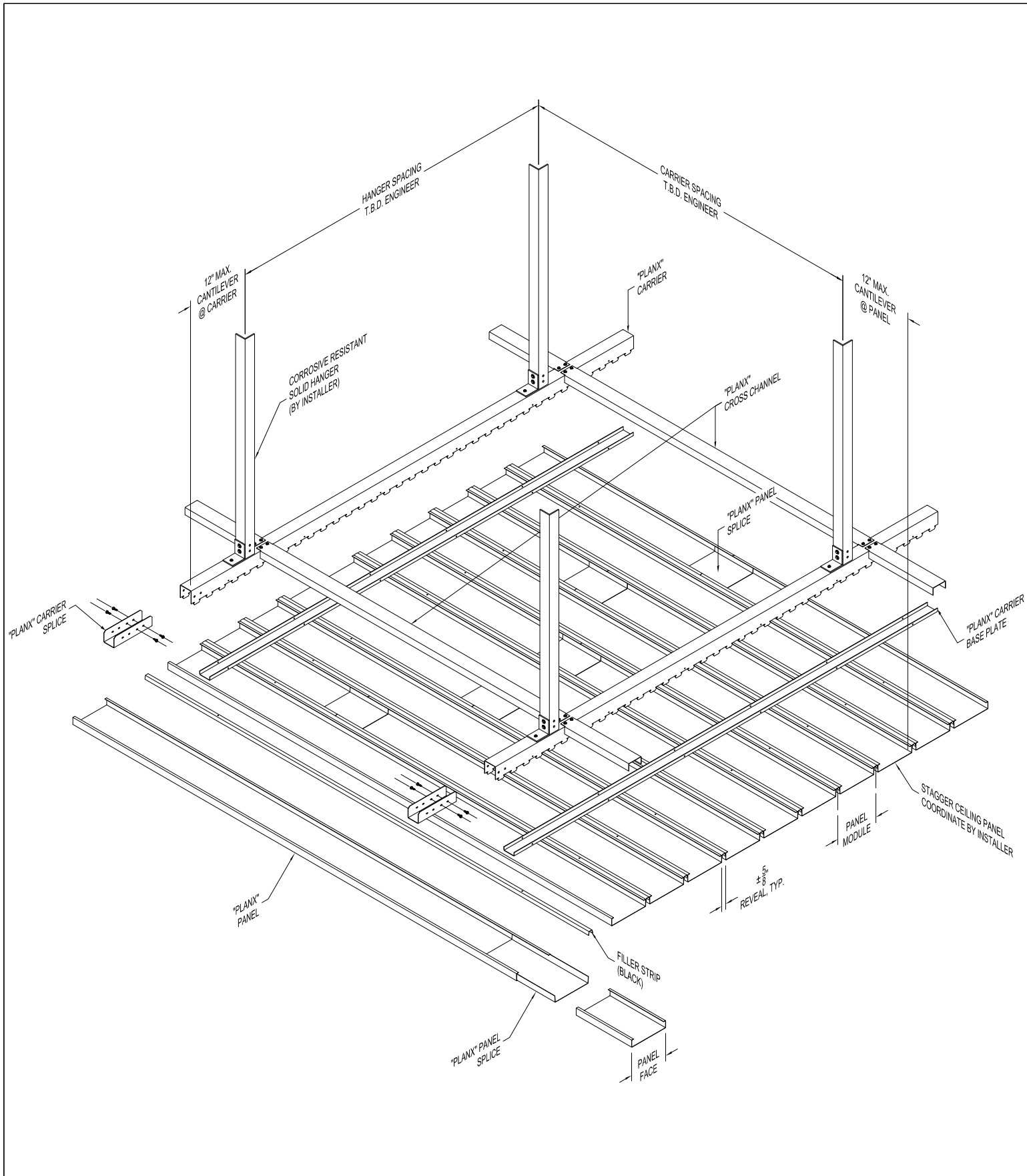
"PLANX" Exterior Ceiling Panel - Isometric Detail

SHEET: EX-PLANX-ISO

SCALE: N.T.S.

ISSUE DATE: 2/17/2022

USG CEILINGS PLUS © 2021 The USG Product Specifications contained herein are intended for use as product reference material by architects, engineers, contractors, building code officials, or other competent construction industry professionals having an interest in the selection, specification, and use of products manufactured by USG Corporation and its subsidiaries. These Specifications are intended solely as technical support incident to the sale and use of USG products and not intended to be a substitute for the review and approval of the licensed design professionals for the project. These materials may be printed and/or transferred electronically solely as needed by the user. Because electronic CAD & BIM files can be modified by other parties without notice or indication, any alteration of such files and their contents become the responsibility and liability of the design professionals for the project.



CEILINGSPUS®

USG Corporation
550 West Adams Street, Chicago, IL 60661-3676 1.800-USG4YOU

EXTERIOR PLANX™ SYSTEM DETAILS

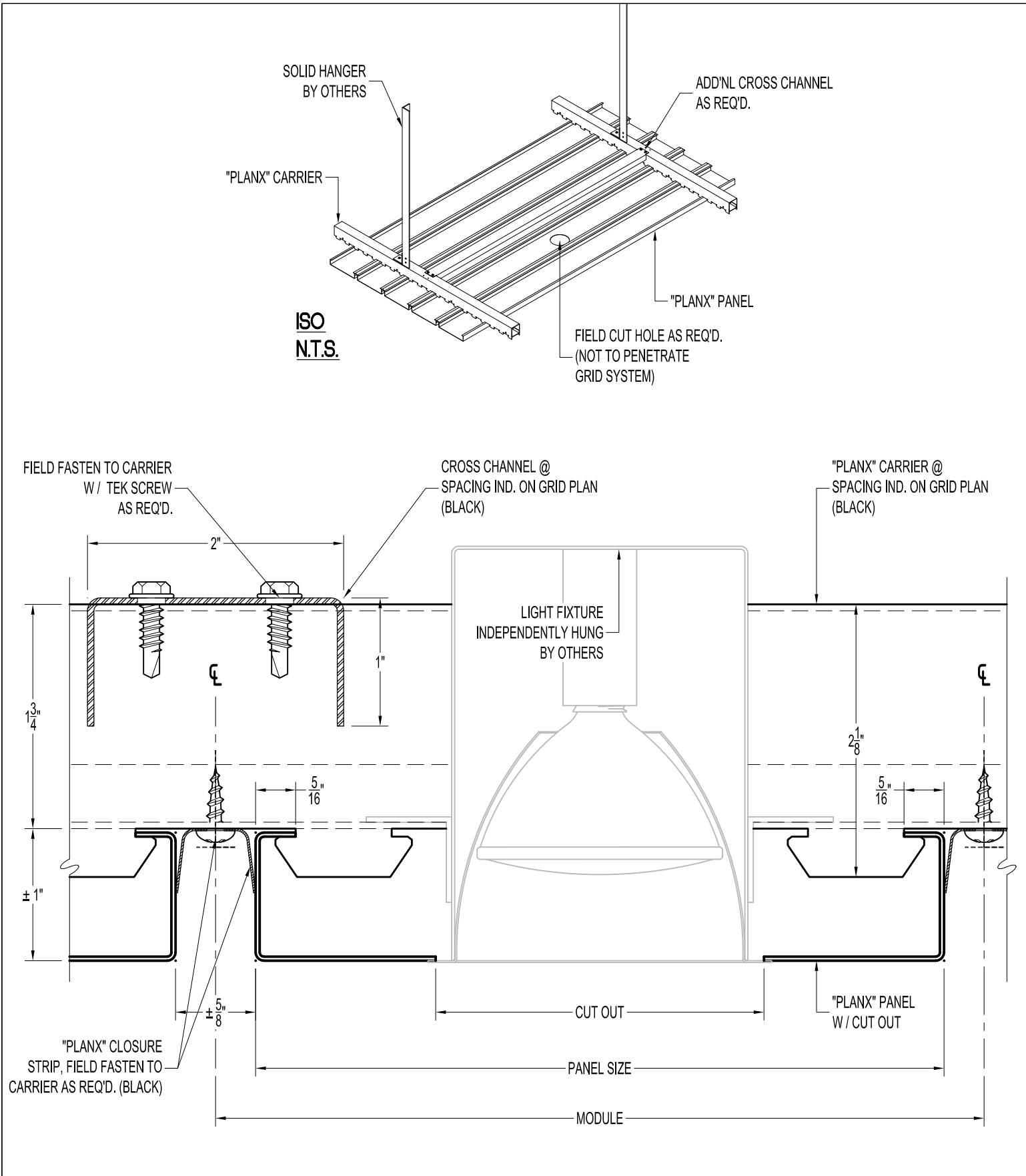
"PLANX" Exterior Ceiling Panel - Isometric Detail (Stagger)

SHEET: EX-PLANX-ISO1

SCALE: N.T.S.

ISSUE DATE: 2/17/2022

USG CEILINGSPUS PLUS © 2021 The USG Product Specifications contained herein are intended for use as product reference material by architects, engineers, contractors, building code officials, or other competent construction industry professionals having an interest in the selection, specification, and use of products manufactured by USG Corporation and its subsidiaries. These Specifications are intended solely as technical support incident to the sale and use of USG products and not intended to be a substitute for the review and approval of the licensed design professionals for the project. These materials may be printed and/or transferred electronically solely as needed by the user. Because electronic CAD & BIM files can be modified by other parties without notice or indication, any alteration of such files and their contents become the responsibility and liability of the design professionals for the project.



CEILINGSPUS®

USG Corporation
550 West Adams Street, Chicago, IL 60661-3676 1.800-USG4YOU

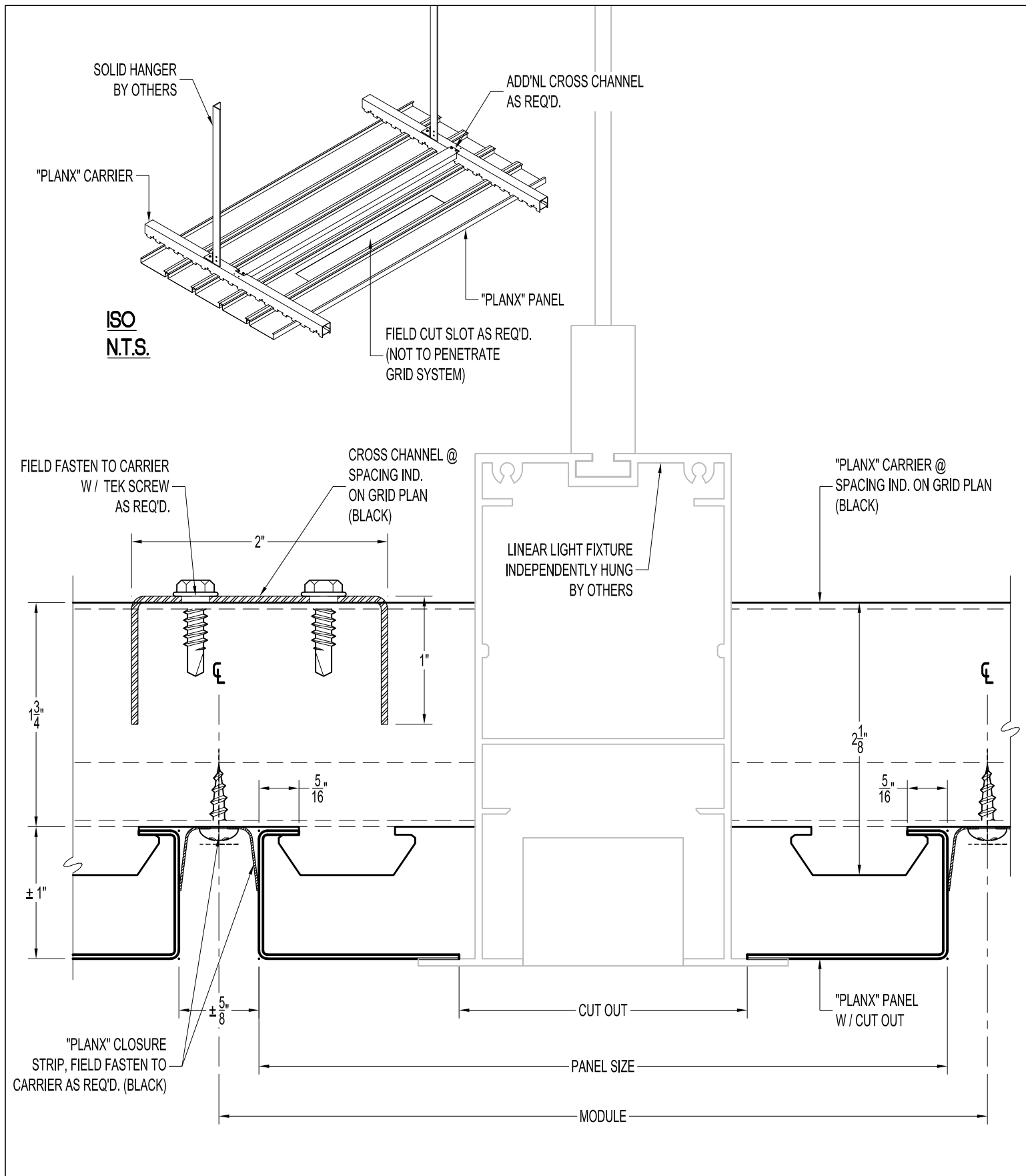
EXTERIOR PLANX™ SYSTEM DETAILS

"PLANX" Exterior Ceiling Panel - Light Fixture Penetration

SHEET: EX-PLANX-LHT1

SCALE: 1:1

ISSUE DATE: 2/17/2022



CEILINGSPLUS®

USG Corporation
550 West Adams Street, Chicago, IL 60661-3676 1.800-USG4YOU

EXTERIOR PLANX™ SYSTEM DETAILS

"PLANX" Exterior Ceiling Panel - Linear Fixture Penetration

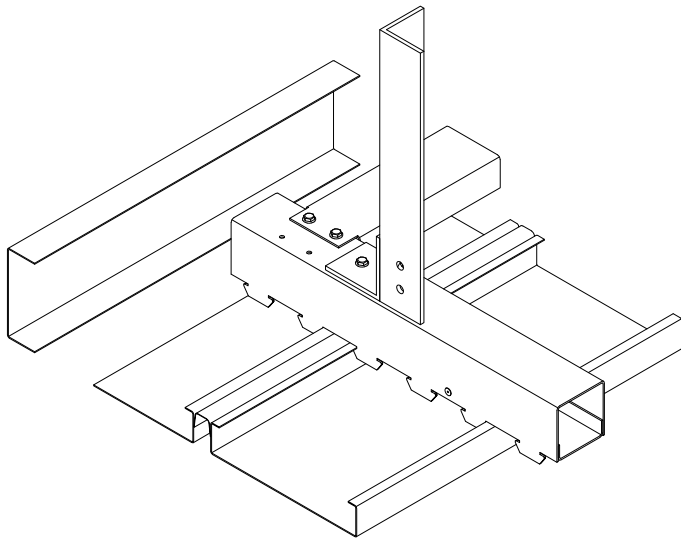
SHEET: EX-PLANX-LHT2

SCALE: 1:1

ISSUE DATE: 2/17/2022

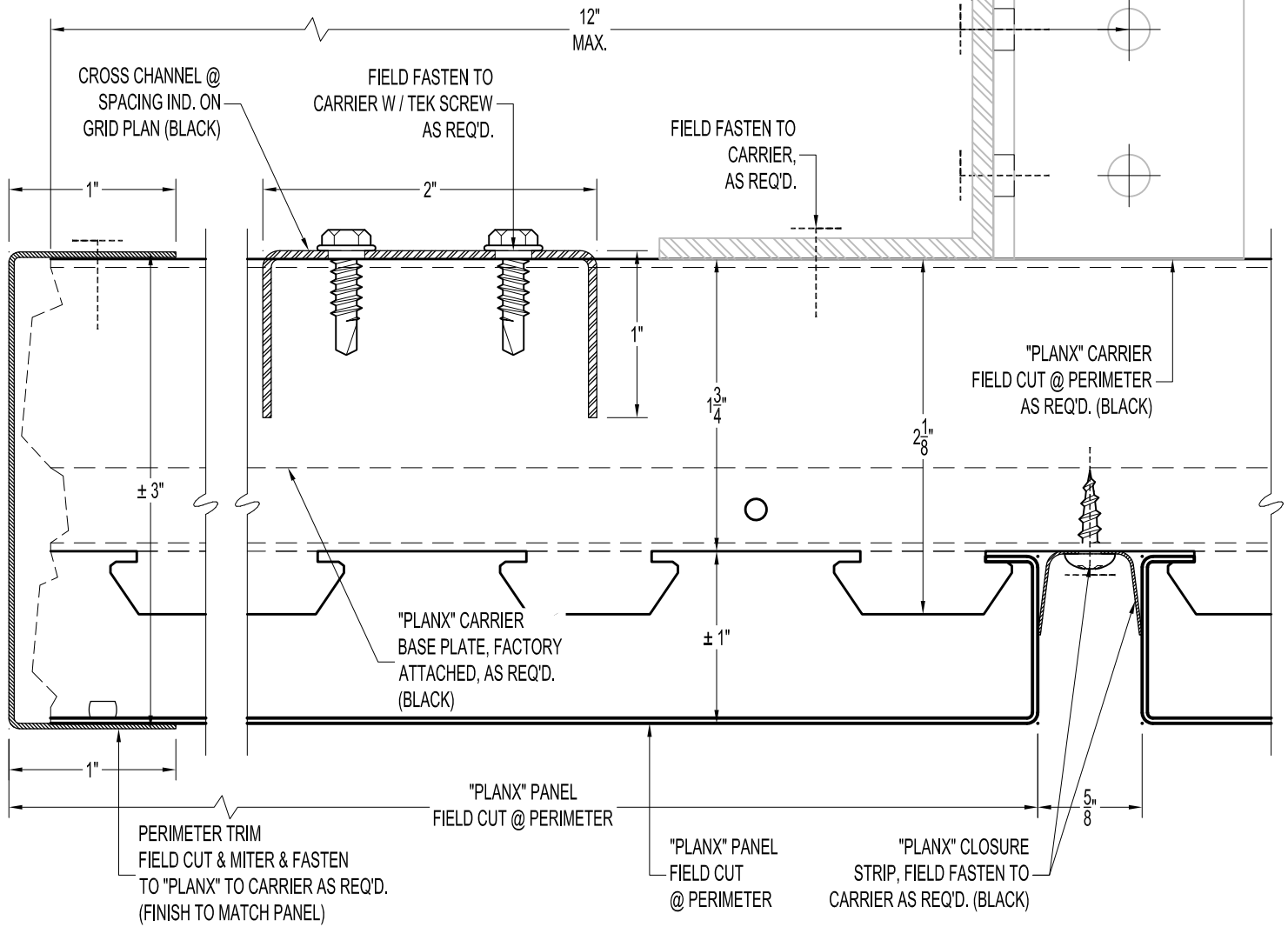
USG CEILINGS PLUS © 2021 The USG Product Specifications contained herein are intended for use as product reference material by architects, engineers, contractors, building code officials, or other competent construction industry professionals having an interest in the selection, specification, and use of products manufactured by USG Corporation and its subsidiaries. These Specifications are intended solely as technical support incident to the sale and use of USG products and not intended to be a substitute for the review and approval of the licensed design professionals for the project. These materials may be printed and/or transferred electronically solely as needed by the user. Because electronic CAD & BIM files can be modified by other parties without notice or indication, any alteration of such files and their contents become the responsibility and liability of the design professionals for the project.

ISO
N.T.S.



SOLID HANGER
BY OTHERS

ANGLE CLIP
BY OTHERS



CEILINGSPUS®

USG Corporation
550 West Adams Street, Chicago, IL 60661-3676 1.800-USG4YOU

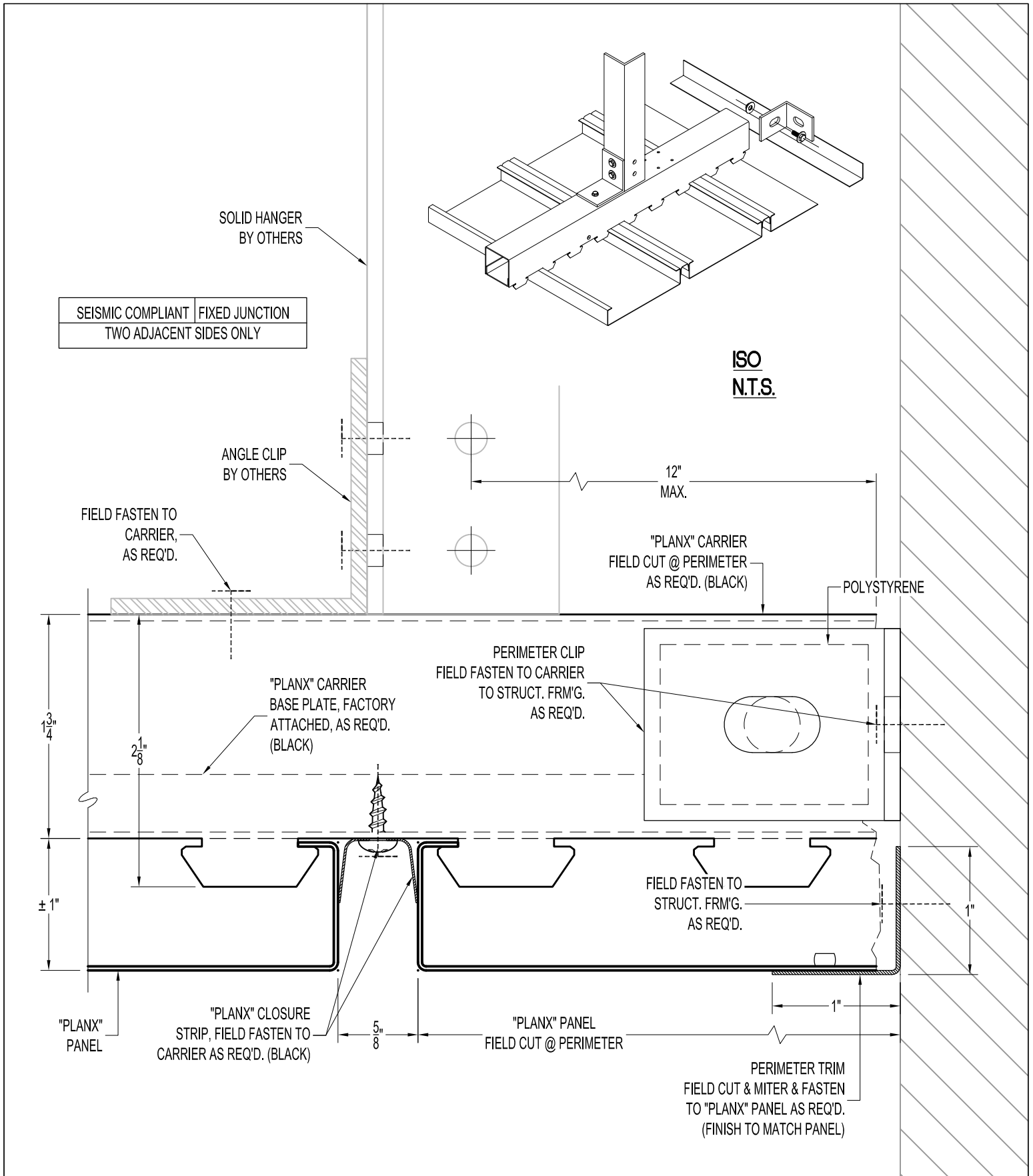
EXTERIOR PLANX™ SYSTEM DETAILS

"PLANX" Exterior Ceiling Panel - Perimeter "C" Channel

SHEET: EX-PLANX-P1

SCALE: 1:1

ISSUE DATE: 2/17/2022



CEILINGSPUS®

USG Corporation
550 West Adams Street, Chicago, IL 60661-3676 1.800-USG4YOU

EXTERIOR PLANX™ SYSTEM DETAILS

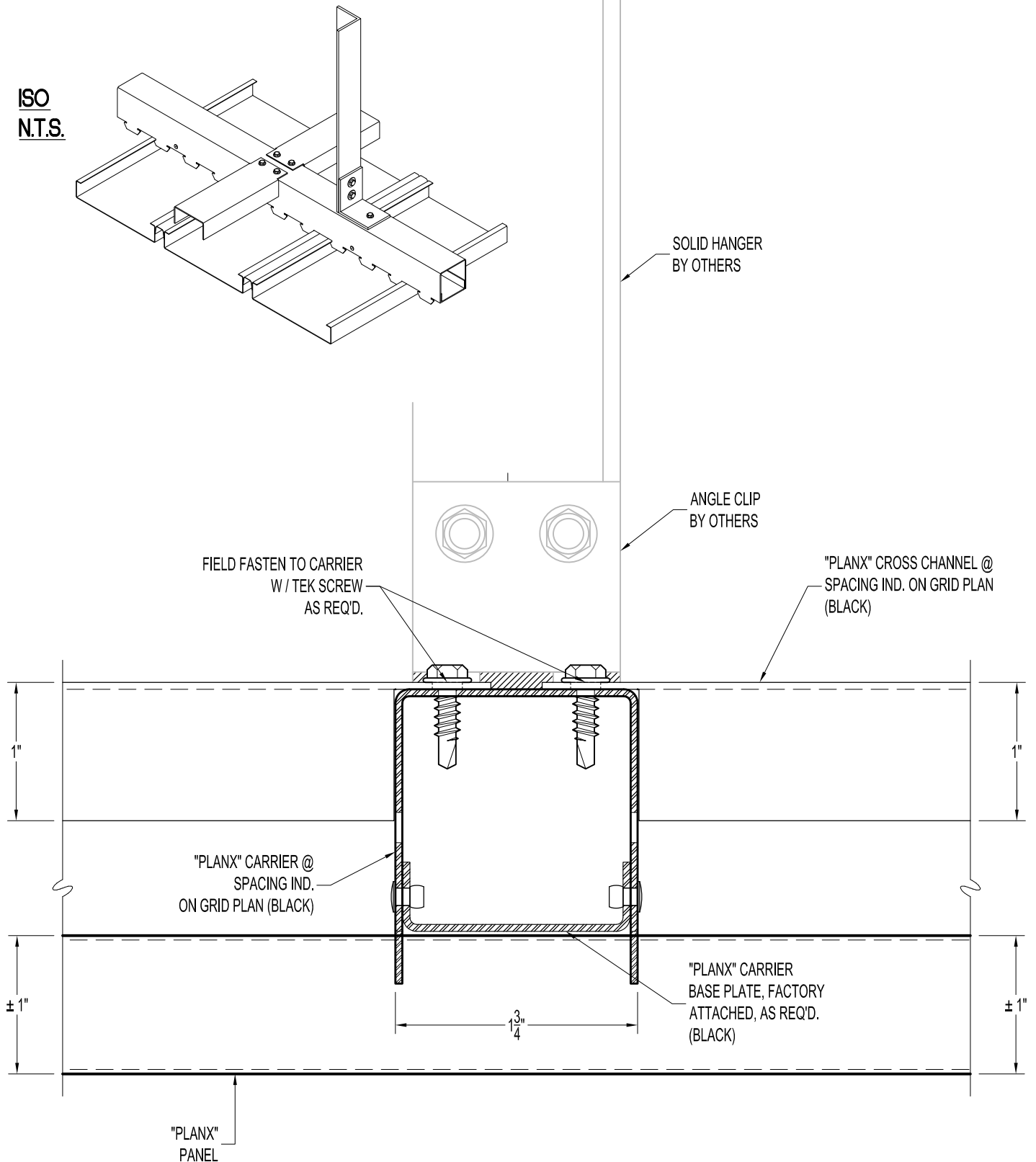
"PLANX" Exterior Ceiling Panel - Perimeter Angle Trim

SHEET: EX-PLANX-P2

SCALE: 1:1

ISSUE DATE: 2/17/2022

ISO
N.T.S.



USG Corporation
550 West Adams Street, Chicago, IL 60661-3676 1.800-USG4YOU

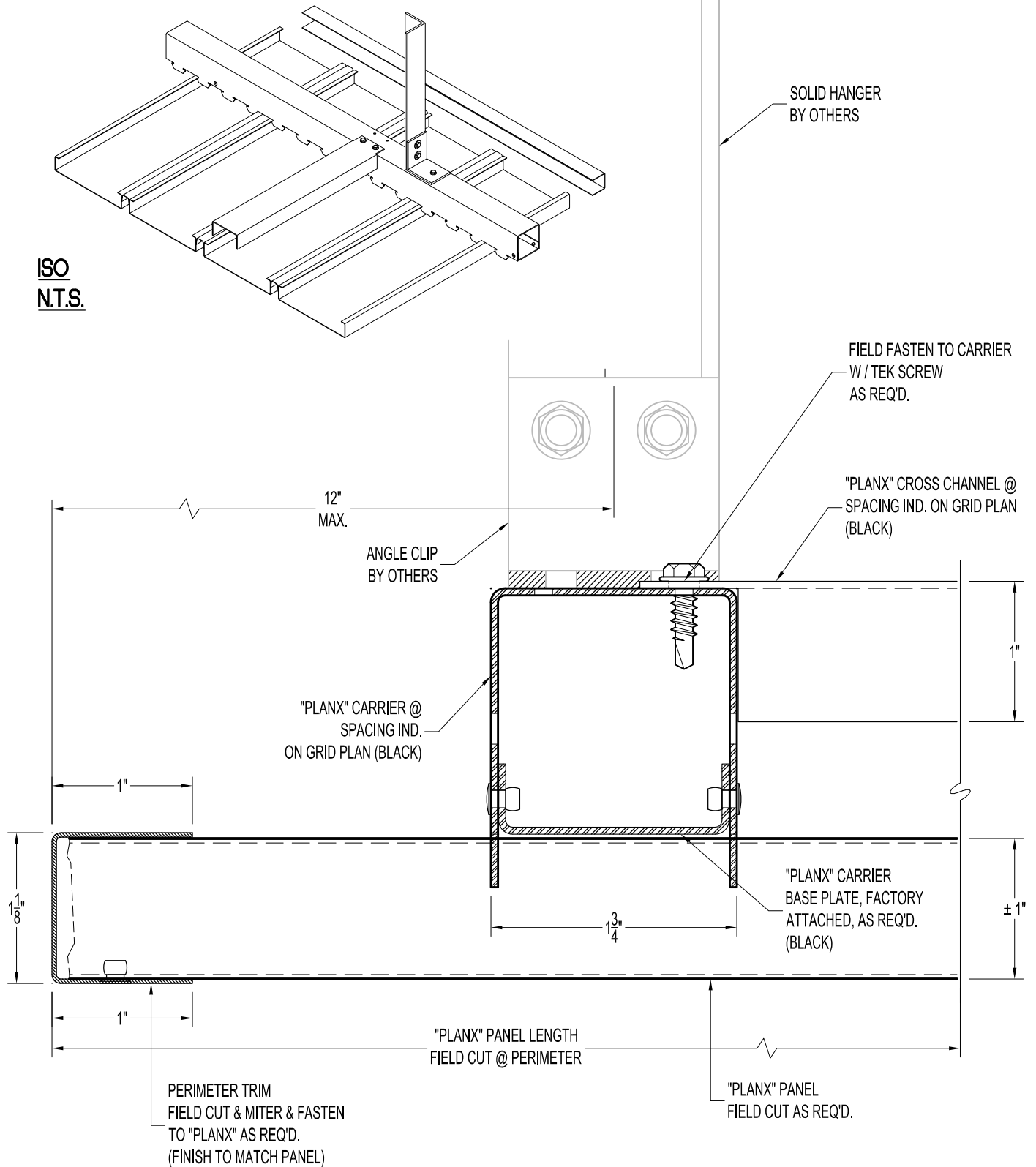
EXTERIOR PLANX™ SYSTEM DETAILS
"PLANX" Exterior Ceiling Panel - Carrier Section

SHEET: EX-PLANX-P3

SCALE: 1:1

ISSUE DATE: 2/17/2022

ISO
N.T.S.



USG Corporation
550 West Adams Street, Chicago, IL 60661-3676 1.800-USG4YOU

EXTERIOR PLANX™ SYSTEM DETAILS

"PLANX" Exterior Ceiling Panel - Perimeter C-Trim

SHEET: EX-PLANX-P4

SCALE: 1:1

ISSUE DATE: 2/17/2022

USG CEILINGS PLUS © 2021 The USG Product Specifications contained herein are intended for use as product reference material by architects, engineers, contractors, building code officials, or other competent construction industry professionals having an interest in the selection, specification, and use of products manufactured by USG Corporation and its subsidiaries. These Specifications are intended solely as technical support incident to the sale and use of USG products and not intended to be a substitute for the review and approval of the licensed design professionals for the project. These materials may be printed and/or transferred electronically solely as needed by the user. Because electronic CAD & BIM files can be modified by other parties without notice or indication, any alteration of such files and their contents become the responsibility and liability of the design professionals for the project.

SEISMIC COMPLIANT FIXED JUNCTION
TWO ADJACENT SIDES ONLY

ISO
N.T.S.

SOLID HANGER
BY OTHERS

ANGLE CLIP
BY OTHERS

FIELD FASTEN TO CARRIER
W/ TEK SCREW
AS REQ'D.

"PLANX" CROSS CHANNEL @
SPACING IND.
ON GRID PLAN (BLACK)
FIELD CUT AS REQ'D.

PERIMETER CLIP
FIELD FASTEN TO CARRIER
TO STRUCT. FRM'G.
AS REQ'D.

"PLANX" CARRIER @
SPACING IND.
ON GRID PLAN
(BLACK)

POLYSTYRENE

FIELD FASTEN TO
STRUCT. FRM'G.
AS REQ'D.

"PLANX" CARRIER
BASE PLATE, FACTORY
ATTACHED, AS REQ'D. (BLACK)

"PLANX" PANEL LENGTH
FIELD CUT @ PERIMETER

"PLANX" PANEL
FIELD CUT AS REQ'D.

PERIMETER TRIM
FIELD CUT & MITER & FASTEN
TO "PLANX" AS REQ'D.
(FINISH TO MATCH PANEL)



CEILINGSPUS®

USG Corporation
550 West Adams Street, Chicago, IL 60661-3676 1.800-USG4YOU

EXTERIOR PLANX™ SYSTEM DETAILS

"PLANX" Exterior Ceiling Panel - Perimeter Angle Trim

SHEET: EX-PLANX-P5

SCALE: 1:1

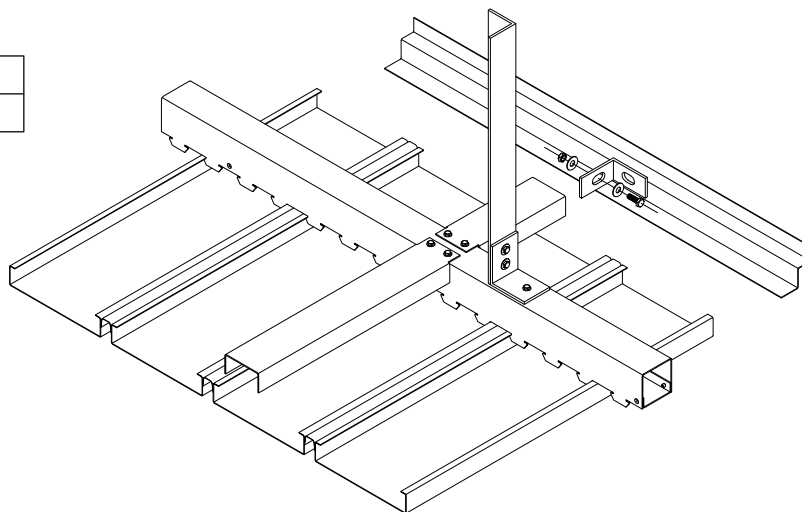
ISSUE DATE: 2/17/2022

USG CEILINGSPUS® © 2021 The USG Product Specifications contained herein are intended for use as product reference material by architects, engineers, contractors, building code officials, or other competent construction industry professionals having an interest in the selection, specification, and use of products manufactured by USG Corporation and its subsidiaries. These Specifications are intended solely as technical support incident to the sale and use of USG products and not intended to be a substitute for the review and approval of the licensed design professionals for the project. These materials may be printed and/or transferred electronically solely as needed by the user. Because electronic CAD & BIM files can be modified by other parties without notice or indication, any alteration of such files and their contents become the responsibility and liability of the design professionals for the project.

SEISMIC COMPLIANT	FIXED JUNCTION
TWO ADJACENT SIDES ONLY	

SOLID HANGER
BY OTHERS

ANGLE CLIP
BY OTHERS



ISO
N.T.S.

FIELD FASTEN TO CARRIER
W / TEK SCREW
AS REQ'D.

"PLANX" CROSS CHANNEL @
SPACING IND.
ON GRID PLAN (BLACK)
FIELD CUT AS REQ'D.

PERIMETER CLIP
FIELD FASTEN TO CARRIER
TO STRUCT. FRM'G.
AS REQ'D.

"PLANX" CARRIER @
SPACING IND.
ON GRID PLAN
(BLACK)

POLYSTYRENE

"PLANX" CARRIER
BASE PLATE, FACTORY
ATTACHED, AS REQ'D.
(BLACK)

FIELD FASTEN TO
STRUCT. FRM'G.
AS REQ'D.

"PLANX" PANEL LENGTH
FIELD CUT @ PERIMETER

"PLANX" PANEL
FIELD CUT AS REQ'D.

PERIMETER TRIM
FIELD CUT & MITER & FASTEN
TO "PLANX" PANEL AS REQ'D.
(FINISH TO MATCH PANEL)



CEILINGSPUS®

USG Corporation
550 West Adams Street, Chicago, IL 60661-3676 1.800-USG4YOU

EXTERIOR PLANX™ SYSTEM DETAILS

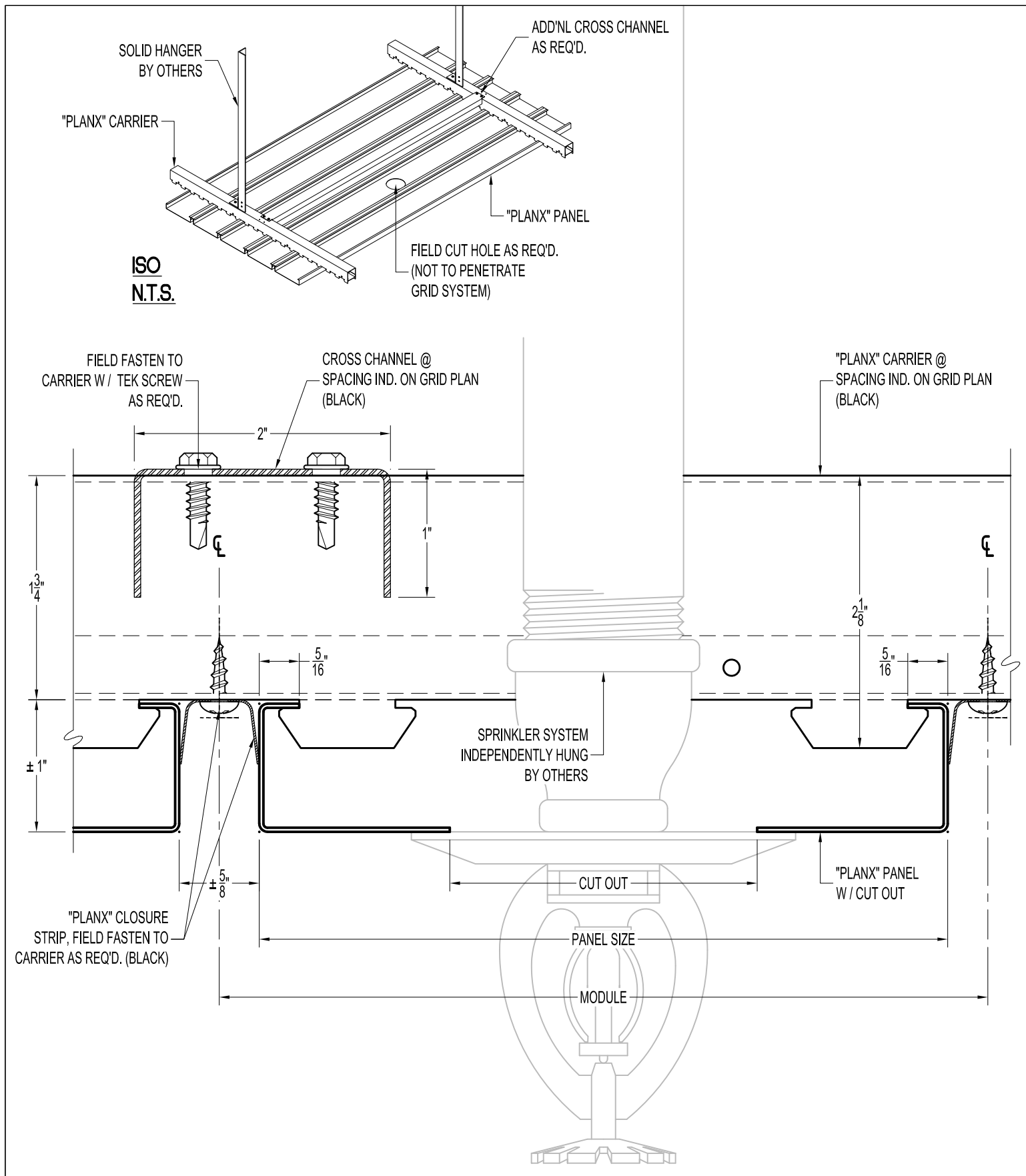
"PLANX" Exterior Ceiling Panel - Perimeter W-Trim

SHEET: EX-PLANX-P6

SCALE: 1:1

ISSUE DATE: 2/17/2022

USG CEILINGSPUS PLUS © 2021 The USG Product Specifications contained herein are intended for use as product reference material by architects, engineers, contractors, building code officials, or other competent construction industry professionals having an interest in the selection, specification, and use of products manufactured by USG Corporation and its subsidiaries. These Specifications are intended solely as technical support incident to the sale and use of USG products and not intended to be a substitute for the review and approval of the licensed design professionals for the project. These materials may be printed and/or transferred electronically solely as needed by the user. Because electronic CAD & BIM files can be modified by other parties without notice or indication, any alteration of such files and their contents become the responsibility and liability of the design professionals for the project.



CEILINGSPLUS®

USG Corporation
550 West Adams Street, Chicago, IL 60661-3676 1.800-USG4YOU

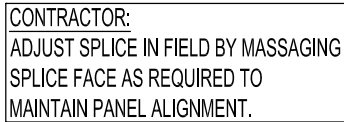
EXTERIOR PLANX™ SYSTEM DETAILS

"PLANX" Exterior Ceiling Panel - Sprinkler System

SHEET: EX-PLANX-SPKR

SCALE: 1:1

ISSUE DATE: 2/17/2022



ISO
N.T.S.

"PLANX"
SPLICE



USG CEILINGS PLUS © 2021 The USG Product Specifications contained herein are intended for use as product reference material by architects, engineers, contractors, building code officials, or other competent construction industry professionals having an interest in the selection, specification, and use of products manufactured by USG Corporation and its subsidiaries. These Specifications are intended solely as technical support incident to the sale and use of USG products and not intended to be a substitute for the review and approval of the licensed design professionals for the project. These materials may be printed and/or transferred electronically solely as needed by the user. Because electronic CAD & BIM files can be modified by other parties without notice or indication, any alteration of such files and their contents become the responsibility and liability of the design professionals for the project.