

DETAIL NOTES - SLAB EDGE DETAILS

| | |
|----|---|
| 1 | (2) LAYERS 5/8" SHEETROCK TYPE X PANELS |
| 2 | COMPLETELY FILL GAP WITH USG SHEETROCK ACOUSTICAL OR SMOKE-SOUND SEALANT |
| 3 | 1" SHEETROCK LINER PANEL |
| 4 | J-RUNNER |
| 5 | USG SHEETROCK LINER PANELS, CUT TOP OF PANEL 1" LESS THAN FLOOR-TO-CEILING HEIGHT |
| 6 | 6" 20 GA. J-RUNNER |
| 7 | STRUCTURAL SLAB |
| 8 | USG SHEETROCK TYPE X PANELS, CUT 5/8" FROM TOP OF PARTITION MAX., THICKNESS PER ARCHITECT |
| 9 | PAN HEAD SCREW THROUGH J-RUNNER INTO CH STUD |
| 10 | CH STUD 24" O.C. |
| 11 | 20 GA. 2" X 2" STEEL ANGLE CLIP, FASTEN TO SLAB & EVERY CH STUD |
| 12 | 2-1/2" CH STUD |
| 13 | MIN. 4 PCF MINERAL FIBER INSULATION THICKNESS 1/2" GREATER THAN GAP |
| 14 | 6" CH STUD WALL HEIGHT < 15'-3"H |
| 15 | 2 1/2" STEEL J-RUNNER |
| 16 | TOP OF CH STUD |



USG Corporation
 550 West Adams Street, Chicago, IL 60661
 T. 800-USG4YOU www.USG.com

BASE SECTION 2 HOUR (3/4" MAX) SLAB EDGE DETAILS FOR SHAFT WALL SYSTEMS

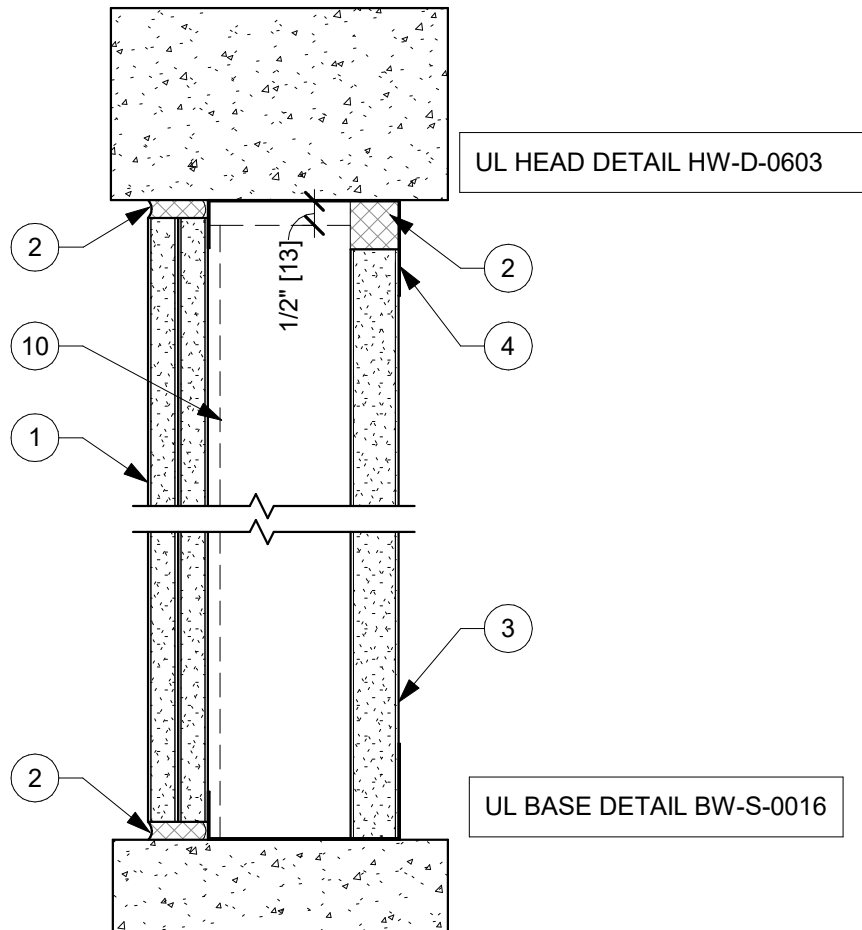
ISSUE RECORD:
 12/15/21

ISSUE: DATE:

SHEET INFORMATION:
 SCALE: 3" = 1'-0"

SW-SED-01

BASE SECTION 2 HOUR (3/4" MAX)



DETAIL NOTES - SLAB EDGE DETAILS

| | |
|----|---|
| 1 | (2) LAYERS 5/8" SHEETROCK TYPE X PANELS |
| 2 | COMPLETELY FILL GAP WITH USG SHEETROCK ACOUSTICAL OR SMOKE-SOUND SEALANT |
| 3 | 1" SHEETROCK LINER PANEL |
| 4 | J-RUNNER |
| 5 | USG SHEETROCK LINER PANELS, CUT TOP OF PANEL 1" LESS THAN FLOOR-TO-CEILING HEIGHT |
| 6 | 6" 20 GA. J-RUNNER |
| 7 | STRUCTURAL SLAB |
| 8 | USG SHEETROCK TYPE X PANELS, CUT 5/8" FROM TOP OF PARTITION MAX., THICKNESS PER ARCHITECT |
| 9 | PAN HEAD SCREW THROUGH J-RUNNER INTO CH STUD |
| 10 | CH STUD 24" O.C. |
| 11 | 20 GA. 2" X 2" STEEL ANGLE CLIP, FASTEN TO SLAB & EVERY CH STUD |
| 12 | 2-1/2" CH STUD |
| 13 | MIN. 4 PCF MINERAL FIBER INSULATION THICKNESS 1/2" GREATER THAN GAP |
| 14 | 6" CH STUD WALL HEIGHT < 15'-3"H |
| 15 | 2 1/2" STEEL J-RUNNER |
| 16 | TOP OF CH STUD |



USG Corporation
 550 West Adams Street, Chicago, IL 60661
 T. 800-USG4YOU www.USG.com

SHAFTWALL BASE AND HEAD DETAIL

SLAB EDGE DETAILS FOR SHAFT WALL SYSTEMS

ISSUE RECORD:
 12/15/21

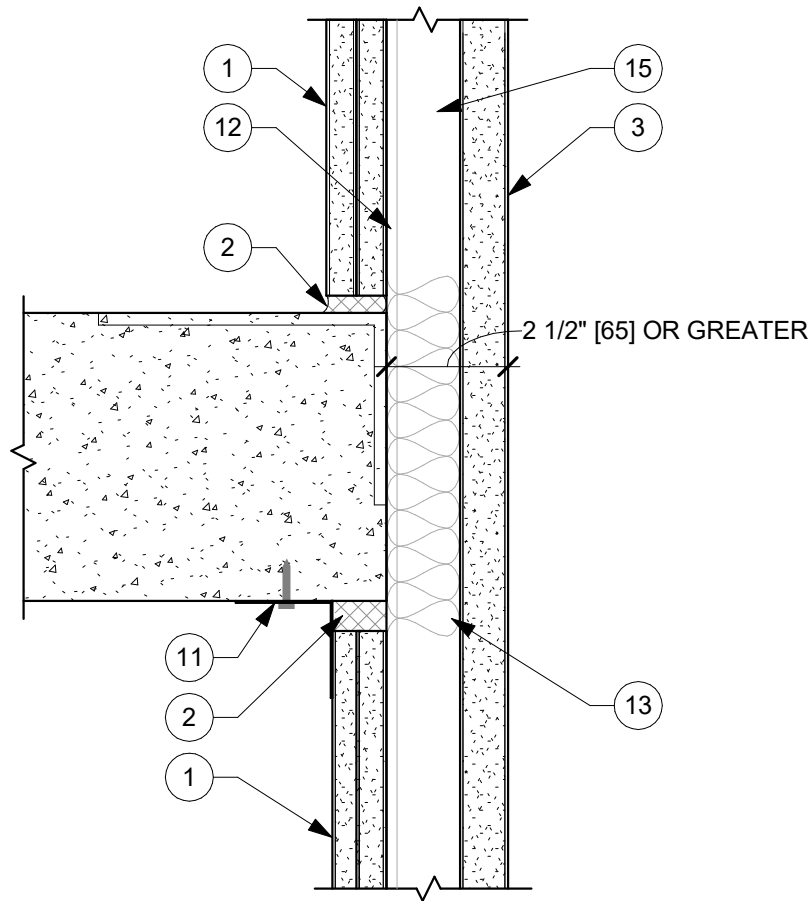
ISSUE: DATE:

SHEET INFORMATION:
 SCALE: 3" = 1'-0"

SW-SED-02

SHAFTWALL BASE AND HEAD DETAIL

DISCLAIMER: THE USG PRODUCT DETAILS CONTAINED HEREIN ARE INTENDED FOR USE AS PRODUCT REFERENCE MATERIAL BY ARCHITECTS, ENGINEERS, OTHER DESIGN PROFESSIONALS, CONTRACTORS, BUILDING CODE OFFICIALS, OR OTHER COMPETENT CONSTRUCTION INDUSTRY TRADE PROFESSIONALS HAVING AN INTEREST IN THE SELECTION, SPECIFICATION AND USE OF PRODUCTS MANUFACTURED BY THE SUBSIDIARIES OF USG CORPORATION. THE DRAWINGS ARE INTENDED SOLELY AS TECHNICAL SUPPORT INCIDENT TO THE SALE AND USE OF USG PRODUCTS AND NOT INTENDED TO BE A SUBSTITUTE FOR THE DESIGN REVIEW AND APPROVAL OF THE LICENSED DESIGN PROFESSIONALS FOR THE PROJECT. THESE MATERIALS MAY BE PRINTED AND/OR TRANSFERRED ELECTRONICALLY SOLELY AS NEEDED BY THE USER, BECAUSE CAD/ELECTRONIC FILES AND BIM (BUILDING INFORMATION MODELING) FILES CAN BE MODIFIED BY OTHER PARTIES, WITHOUT NOTICE OR INDICATION OF SUCH MODIFICATIONS, MODIFICATION OF USG PRODUCT CAD AND BIM DRAWINGS IS THE SOLE RESPONSIBILITY OF THE DESIGN PROFESSIONAL. ©2021 USG CORPORATION.



DETAIL NOTES - SLAB EDGE DETAILS

| | |
|----|---|
| 1 | (2) LAYERS 5/8" SHEETROCK TYPE X PANELS |
| 2 | COMPLETELY FILL GAP WITH USG SHEETROCK ACOUSTICAL OR SMOKE-SOUND SEALANT |
| 3 | 1" SHEETROCK LINER PANEL |
| 4 | J-RUNNER |
| 5 | USG SHEETROCK LINER PANELS, CUT TOP OF PANEL 1" LESS THAN FLOOR-TO-CEILING HEIGHT |
| 6 | 6" 20 GA. J-RUNNER |
| 7 | STRUCTURAL SLAB |
| 8 | USG SHEETROCK TYPE X PANELS, CUT 5/8" FROM TOP OF PARTITION MAX., THICKNESS PER ARCHITECT |
| 9 | PAN HEAD SCREW THROUGH J-RUNNER INTO CH STUD |
| 10 | CH STUD 24" O.C. |
| 11 | 20 GA. 2" X 2" STEEL ANGLE CLIP, FASTEN TO SLAB & EVERY CH STUD |
| 12 | 2-1/2" CH STUD |
| 13 | MIN. 4 PCF MINERAL FIBER INSULATION THICKNESS 1/2" GREATER THAN GAP |
| 14 | 6" CH STUD WALL HEIGHT < 15'-3"H |
| 15 | 2 1/2" STEEL J-RUNNER |
| 16 | TOP OF CH STUD |



USG Corporation
 550 West Adams Street, Chicago, IL 60661
 T. 800-USG4YOU www.USG.com

OUTBOARD SHAFT / SLAB DETAIL - 2 HOUR

SLAB EDGE DETAILS FOR SHAFT WALL SYSTEMS

ISSUE RECORD:
 12/21/21

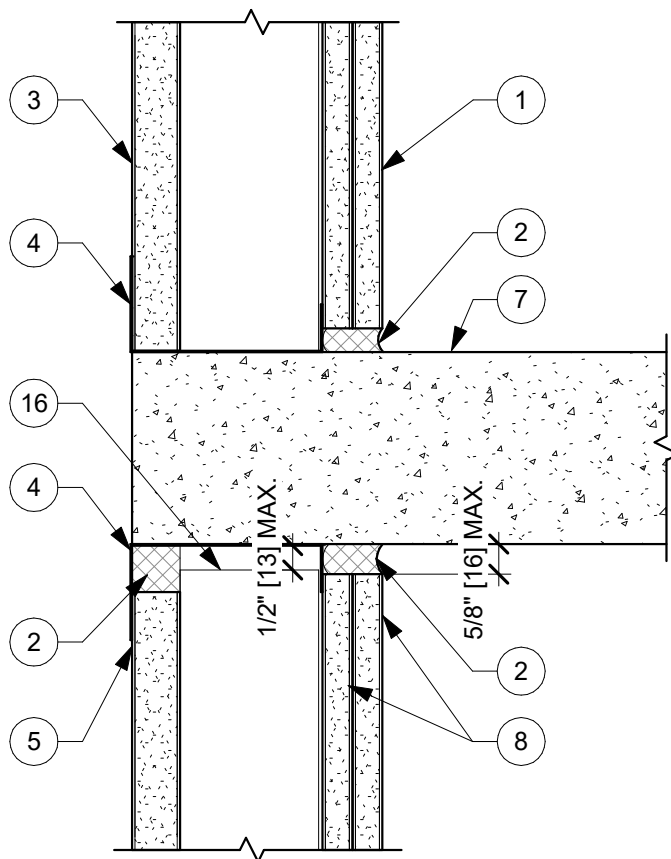
ISSUE: DATE:

SHEET INFORMATION:
 SCALE: 3" = 1'-0"

SW-SED-03

OUTBOARD SHAFT / SLAB DETAIL - 2 HOUR

DISCLAIMER: THE USG PRODUCT DETAILS CONTAINED HEREIN ARE INTENDED FOR USE AS PRODUCT REFERENCE MATERIAL BY ARCHITECTS, ENGINEERS, OTHER DESIGN PROFESSIONALS, CONTRACTORS, BUILDING CODE OFFICIALS, OR OTHER COMPETENT CONSTRUCTION INDUSTRY TRADE PROFESSIONALS HAVING AN INTEREST IN THE SELECTION, SPECIFICATION AND USE OF PRODUCTS MANUFACTURED BY THE SUBSIDIARIES OF USG CORPORATION. THE DRAWINGS ARE INTENDED SOLELY AS TECHNICAL SUPPORT INCIDENT TO THE SALE AND USE OF USG PRODUCTS AND NOT INTENDED TO BE A SUBSTITUTE FOR THE DESIGN REVIEW AND APPROVAL OF THE LICENSED DESIGN PROFESSIONALS FOR THE PROJECT. THESE MATERIALS MAY BE PRINTED AND/OR TRANSFERRED ELECTRONICALLY SOLELY AS NEEDED BY THE USER, BECAUSE CAD/ELECTRONIC FILES AND BIM (BUILDING INFORMATION MODELING) FILES CAN BE MODIFIED BY OTHER PARTIES, WITHOUT NOTICE OR INDICATION OF SUCH MODIFICATIONS, MODIFICATION OF USG PRODUCT CAD AND BIM DRAWINGS IS THE SOLE RESPONSIBILITY OF THE DESIGN PROFESSIONAL. ©2021 USG CORPORATION.



DETAIL NOTES - SLAB EDGE DETAILS

| | |
|----|---|
| 1 | (2) LAYERS 5/8" SHEETROCK TYPE X PANELS |
| 2 | COMPLETELY FILL GAP WITH USG SHEETROCK ACOUSTICAL OR SMOKE-SOUND SEALANT |
| 3 | 1" SHEETROCK LINER PANEL |
| 4 | J-RUNNER |
| 5 | USG SHEETROCK LINER PANELS, CUT TOP OF PANEL 1" LESS THAN FLOOR-TO-CEILING HEIGHT |
| 6 | 6" 20 GA. J-RUNNER |
| 7 | STRUCTURAL SLAB |
| 8 | USG SHEETROCK TYPE X PANELS, CUT 5/8" FROM TOP OF PARTITION MAX., THICKNESS PER ARCHITECT |
| 9 | PAN HEAD SCREW THROUGH J-RUNNER INTO CH STUD |
| 10 | CH STUD 24" O.C. |
| 11 | 20 GA. 2" X 2" STEEL ANGLE CLIP, FASTEN TO SLAB & EVERY CH STUD |
| 12 | 2-1/2" CH STUD |
| 13 | MIN. 4 PCF MINERAL FIBER INSULATION THICKNESS 1/2" GREATER THAN GAP |
| 14 | 6" CH STUD WALL HEIGHT < 15'-3"H |
| 15 | 2 1/2" STEEL J-RUNNER |
| 16 | TOP OF CH STUD |



USG Corporation
 550 West Adams Street, Chicago, IL 60661
 T. 800-USG4YOU www.USG.com

SILL DETAIL

SLAB EDGE DETAILS FOR SHAFT WALL SYSTEMS

ISSUE RECORD:
 12/15/21

ISSUE: DATE:

SHEET INFORMATION:
 SCALE: 3" = 1'-0"

SW-SED-04

SILL DETAIL

DISCLAIMER: THE USG PRODUCT DETAILS CONTAINED HEREIN ARE INTENDED FOR USE AS PRODUCT REFERENCE MATERIAL BY ARCHITECTS, ENGINEERS, OTHER DESIGN PROFESSIONALS, CONTRACTORS, BUILDING CODE OFFICIALS, OR OTHER COMPETENT CONSTRUCTION INDUSTRY TRADE PROFESSIONALS HAVING AN INTEREST IN THE SELECTION, SPECIFICATION AND USE OF PRODUCTS MANUFACTURED BY THE SUBSIDIARIES OF USG CORPORATION. THE DRAWINGS ARE INTENDED SOLELY AS TECHNICAL SUPPORT INCIDENT TO THE SALE AND USE OF USG PRODUCTS AND NOT INTENDED TO BE A SUBSTITUTE FOR THE DESIGN REVIEW AND APPROVAL OF THE LICENSED DESIGN PROFESSIONALS FOR THE PROJECT. THESE MATERIALS MAY BE PRINTED AND/OR TRANSFERRED ELECTRONICALLY SOLELY AS NEEDED BY THE USER, BECAUSE CAD/ELECTRONIC FILES AND BIM (BUILDING INFORMATION MODELING) FILES CAN BE MODIFIED BY OTHER PARTIES, WITHOUT NOTICE OR INDICATION OF SUCH MODIFICATIONS. MODIFICATION OF USG PRODUCT CAD AND BIM DRAWINGS IS THE SOLE RESPONSIBILITY OF THE DESIGN PROFESSIONAL. ©2021 USG CORPORATION.