

DETAIL NOTES - SHAFT WALL INTERSECTIONS

1	(1) LAYER 5/8" SHEETROCK TYPE X PANELS
2	(2) LAYERS 5/8" SHEETROCK TYPE X PANELS
3	1" SHEETROCK LINER PANEL
4	J-RUNNER
5	CORNER BEAD
6	ALIGN METAL STUD WITH CH STUD AT ADJACENT PARTITION
7	SHEETROCK ACOUSTICAL SEALANT
8	CH STUD
9	METAL "E OR J" STUDS
10	1 HOUR WALL



USG Corporation
550 West Adams Street, Chicago, IL 60661
T. 800-USG4YOU www.USG.com

2-HOUR SHAFT WALL INTERSECTION

WALL INTERSECTION DETAILS FOR SHAFT WALL SYSTEMS

ISSUE RECORD:
12/13/21

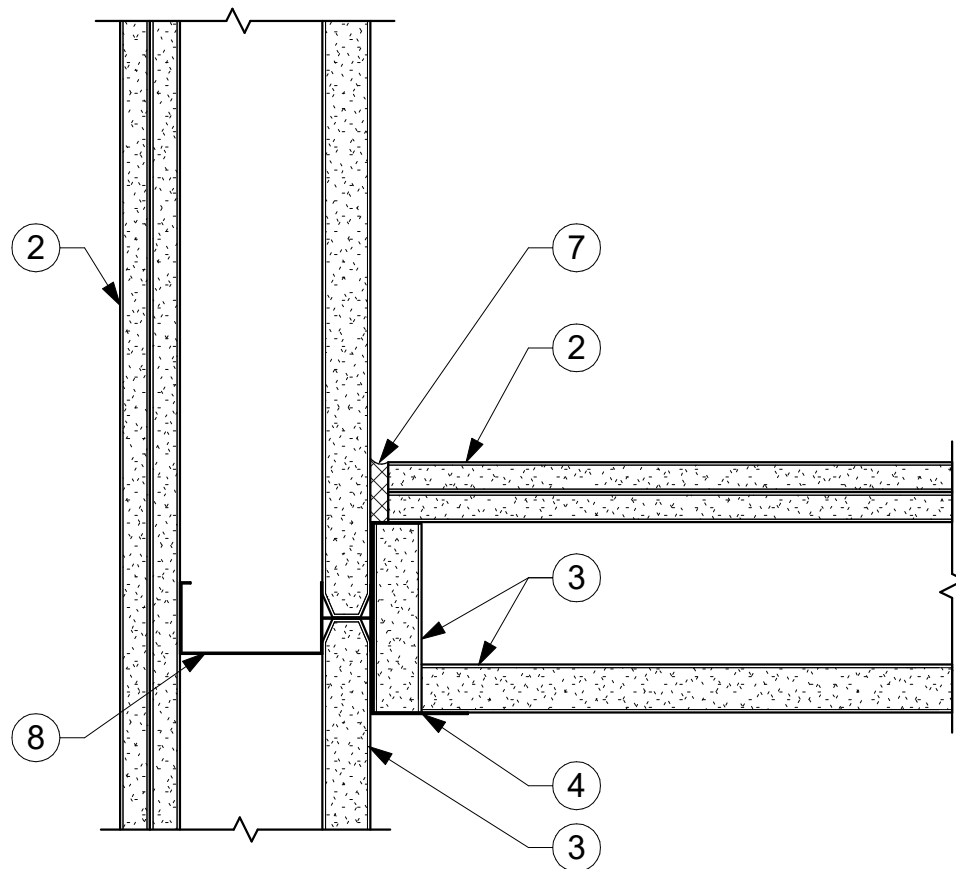
ISSUE: DATE:

SHEET INFORMATION:
SCALE: 3" = 1'-0"

SW-ID-01

2-HOUR SHAFT WALL INTERSECTION

DISCLAIMER: THE USG PRODUCT DETAILS CONTAINED HEREIN ARE INTENDED FOR USE AS PRODUCT REFERENCE MATERIAL BY ARCHITECTS, ENGINEERS, OTHER DESIGN PROFESSIONALS, CONTRACTORS, BUILDING CODE OFFICIALS, OR OTHER COMPETENT CONSTRUCTION INDUSTRY TRADE PROFESSIONALS HAVING AN INTEREST IN THE SELECTION, SPECIFICATION AND USE OF PRODUCTS MANUFACTURED BY THE SUBSIDIARIES OF USG CORPORATION. THE DRAWINGS ARE INTENDED SOLELY AS TECHNICAL SUPPORT INCIDENT TO THE SALE AND USE OF USG PRODUCTS AND NOT INTENDED TO BE A SUBSTITUTE FOR THE DESIGN REVIEW AND APPROVAL OF THE LICENSED DESIGN PROFESSIONALS FOR THE PROJECT. THESE MATERIALS MAY BE PRINTED AND/OR TRANSFERRED ELECTRONICALLY SOLELY AS NEEDED BY THE USER, BECAUSE CAD/ELECTRONIC FILES AND BIM (BUILDING INFORMATION MODELING) FILES CAN BE MODIFIED BY OTHER PARTIES, WITHOUT NOTICE OR INDICATION OF SUCH MODIFICATIONS, MODIFICATION OF USG PRODUCT CAD AND BIM DRAWINGS IS THE SOLE RESPONSIBILITY OF THE DESIGN PROFESSIONAL. ©2021 USG CORPORATION.



DETAIL NOTES - SHAFT WALL INTERSECTIONS

1	(1) LAYER 5/8" SHEETROCK TYPE X PANELS
2	(2) LAYERS 5/8" SHEETROCK TYPE X PANELS
3	1" SHEETROCK LINER PANEL
4	J-RUNNER
5	CORNER BEAD
6	ALIGN METAL STUD WITH CH STUD AT ADJACENT PARTITION
7	SHEETROCK ACOUSTICAL SEALANT
8	CH STUD
9	METAL "E OR J" STUDS
10	1 HOUR WALL



USG Corporation
 550 West Adams Street, Chicago, IL 60661
 T. 800-USG4YOU www.USG.com

WALL JUNCTION

WALL INTERSECTION DETAILS FOR SHAFT WALL SYSTEMS

ISSUE RECORD:
 12/13/21

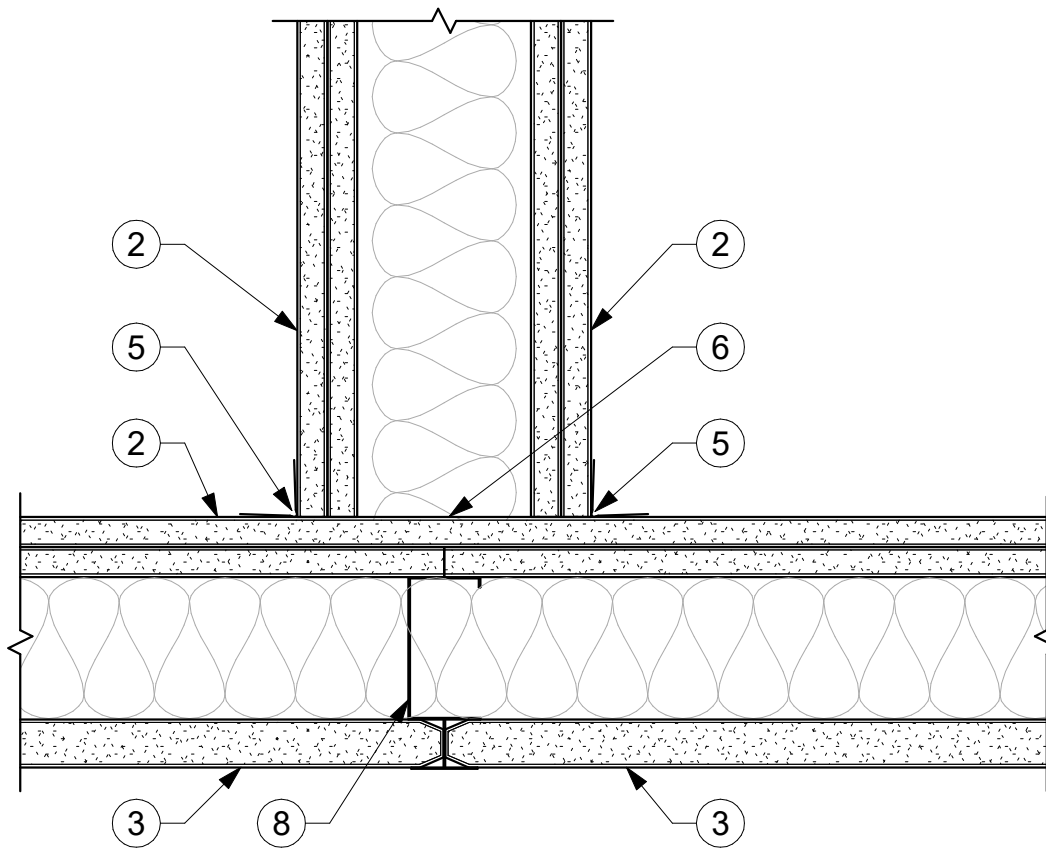
ISSUE: DATE:

SHEET INFORMATION:
 SCALE: 3" = 1'-0"

SW-ID-02

WALL JUNCTION

DISCLAIMER: THE USG PRODUCT DETAILS CONTAINED HEREIN ARE INTENDED FOR USE AS PRODUCT REFERENCE MATERIAL BY ARCHITECTS, ENGINEERS, OTHER DESIGN PROFESSIONALS, CONTRACTORS, BUILDING CODE OFFICIALS, OR OTHER COMPETENT CONSTRUCTION INDUSTRY TRADE PROFESSIONALS HAVING AN INTEREST IN THE SELECTION, SPECIFICATION AND USE OF PRODUCTS MANUFACTURED BY THE SUBSIDIARIES OF USG CORPORATION. THE DRAWINGS ARE INTENDED SOLELY AS TECHNICAL SUPPORT INCIDENT TO THE SALE AND USE OF USG PRODUCTS AND NOT INTENDED TO BE A SUBSTITUTE FOR THE DESIGN REVIEW AND APPROVAL OF THE LICENSED DESIGN PROFESSIONALS FOR THE PROJECT. THESE MATERIALS MAY BE PRINTED AND/OR TRANSFERRED ELECTRONICALLY SOLELY AS NEEDED BY THE USER, BECAUSE CAD/ELECTRONIC FILES AND BIM (BUILDING INFORMATION MODELING) FILES CAN BE MODIFIED BY OTHER PARTIES, WITHOUT NOTICE OR INDICATION OF SUCH MODIFICATIONS, MODIFICATION OF USG PRODUCT CAD AND BIM DRAWINGS IS THE SOLE RESPONSIBILITY OF THE DESIGN PROFESSIONAL. ©2021 USG CORPORATION.



DETAIL NOTES - SHAFT WALL INTERSECTIONS

1	(1) LAYER 5/8" SHEETROCK TYPE X PANELS
2	(2) LAYERS 5/8" SHEETROCK TYPE X PANELS
3	1" SHEETROCK LINER PANEL
4	J-RUNNER
5	CORNER BEAD
6	ALIGN METAL STUD WITH CH STUD AT ADJACENT PARTITION
7	SHEETROCK ACOUSTICAL SEALANT
8	CH STUD
9	METAL "E OR J" STUDS
10	1 HOUR WALL



USG Corporation
 550 West Adams Street, Chicago, IL 60661
 T. 800-USG4YOU www.USG.com

2-HOUR SHAFT WALL INTERSECTION WALL INTERSECTION DETAILS FOR SHAFT WALL SYSTEMS

ISSUE RECORD:
 12/13/21

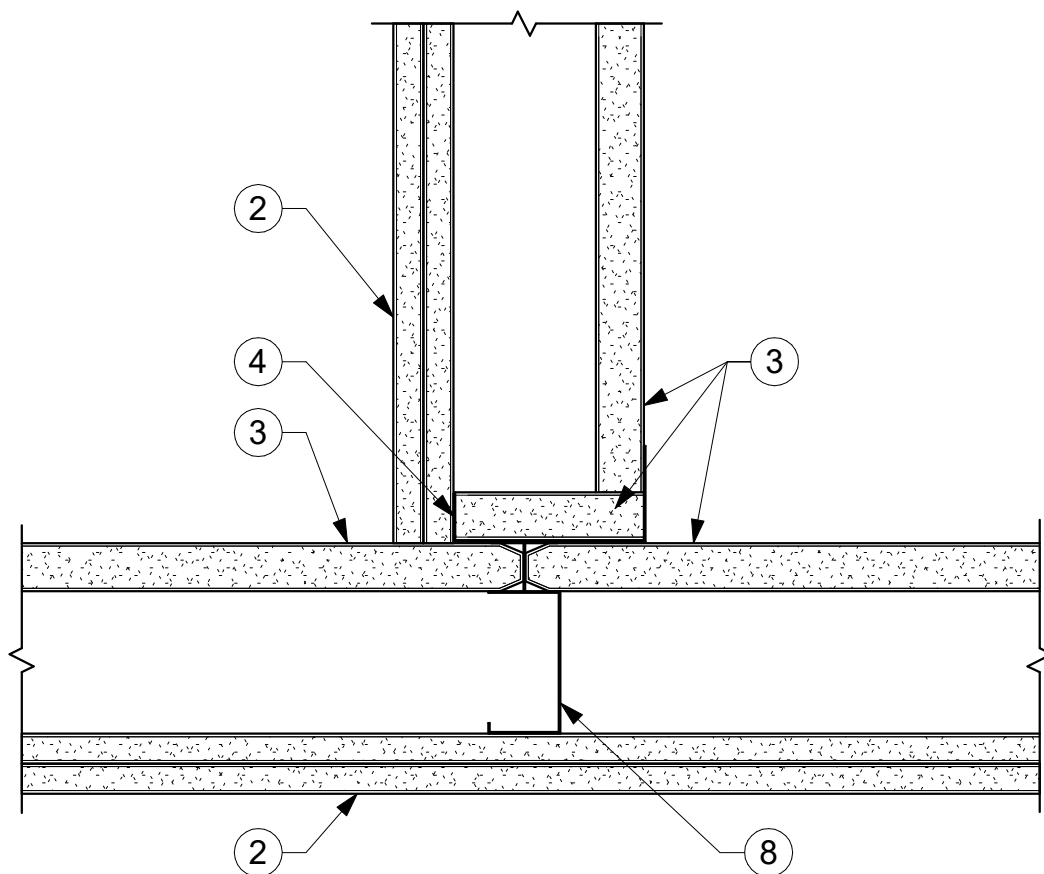
ISSUE: DATE:

SHEET INFORMATION:
 SCALE: 3" = 1'-0"

SW-ID-03

2-HOUR SHAFT WALL INTERSECTION

DISCLAIMER: THE USG PRODUCT DETAILS CONTAINED HEREIN ARE INTENDED FOR USE AS PRODUCT REFERENCE MATERIAL BY ARCHITECTS, ENGINEERS, OTHER DESIGN PROFESSIONALS, CONTRACTORS, BUILDING CODE OFFICIALS, OR OTHER COMPETENT CONSTRUCTION INDUSTRY TRADE PROFESSIONALS HAVING AN INTEREST IN THE SELECTION, SPECIFICATION AND USE OF PRODUCTS MANUFACTURED BY THE SUBSIDIARIES OF USG CORPORATION. THE DRAWINGS ARE INTENDED SOLELY AS TECHNICAL SUPPORT INCIDENT TO THE SALE AND USE OF USG PRODUCTS AND NOT INTENDED TO BE A SUBSTITUTE FOR THE DESIGN REVIEW AND APPROVAL OF THE LICENSED DESIGN PROFESSIONALS FOR THE PROJECT. THESE MATERIALS MAY BE PRINTED AND/OR TRANSFERRED ELECTRONICALLY SOLELY AS NEEDED BY THE USER, BECAUSE CAD/ELECTRONIC FILES AND BIM (BUILDING INFORMATION MODELING) FILES CAN BE MODIFIED BY OTHER PARTIES, WITHOUT NOTICE OR INDICATION OF SUCH MODIFICATIONS, MODIFICATION OF USG PRODUCT CAD AND BIM DRAWINGS IS THE SOLE RESPONSIBILITY OF THE DESIGN PROFESSIONAL. ©2021 USG CORPORATION.



DETAIL NOTES - SHAFT WALL INTERSECTIONS

1	(1) LAYER 5/8" SHEETROCK TYPE X PANELS
2	(2) LAYERS 5/8" SHEETROCK TYPE X PANELS
3	1" SHEETROCK LINER PANEL
4	J-RUNNER
5	CORNER BEAD
6	ALIGN METAL STUD WITH CH STUD AT ADJACENT PARTITION
7	SHEETROCK ACOUSTICAL SEALANT
8	CH STUD
9	METAL "E OR J" STUDS
10	1 HOUR WALL



USG Corporation
 550 West Adams Street, Chicago, IL 60661
 T. 800-USG4YOU www.USG.com

SHAFT WALL INTERSECTION WALL INTERSECTION DETAILS FOR SHAFT WALL SYSTEMS

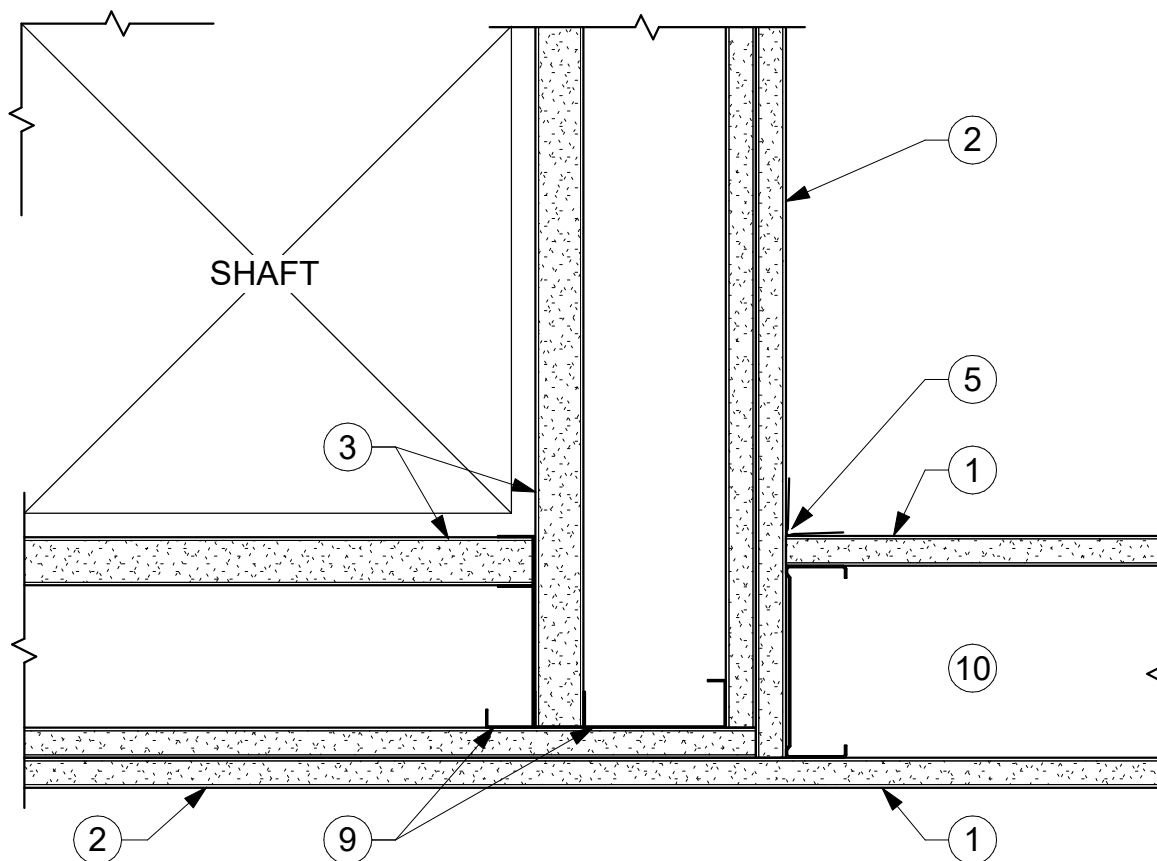
ISSUE RECORD:
 12/13/21

ISSUE: DATE:

SHEET INFORMATION:
 SCALE: 3" = 1'-0"

SW-ID-04

SHAFT WALL INTERSECTION



DETAIL NOTES - SHAFT WALL INTERSECTIONS

1	(1) LAYER 5/8" SHEETROCK TYPE X PANELS
2	(2) LAYERS 5/8" SHEETROCK TYPE X PANELS
3	1" SHEETROCK LINER PANEL
4	J-RUNNER
5	CORNER BEAD
6	ALIGN METAL STUD WITH CH STUD AT ADJACENT PARTITION
7	SHEETROCK ACOUSTICAL SEALANT
8	CH STUD
9	METAL "E OR J" STUDS
10	1 HOUR WALL



USG Corporation
 550 West Adams Street, Chicago, IL 60661
 T. 800-USG4YOU www.USG.com

2-HOUR SHAFT WALL TO 1-HOUR WALL WALL INTERSECTION DETAILS FOR SHAFT WALL SYSTEMS

ISSUE RECORD:
 12/13/21

ISSUE: DATE:

SHEET INFORMATION:
 SCALE: 3" = 1'-0"

SW-ID-05

2-HOUR SHAFT WALL TO 1-HOUR WALL

DISCLAIMER: THE USG PRODUCT DETAILS CONTAINED HEREIN ARE INTENDED FOR USE AS PRODUCT REFERENCE MATERIAL BY ARCHITECTS, ENGINEERS, OTHER DESIGN PROFESSIONALS, CONTRACTORS, BUILDING CODE OFFICIALS, OR OTHER COMPETENT CONSTRUCTION INDUSTRY TRADE PROFESSIONALS HAVING AN INTEREST IN THE SELECTION, SPECIFICATION AND USE OF PRODUCTS MANUFACTURED BY THE SUBSIDIARIES OF USG CORPORATION. THE DRAWINGS ARE INTENDED SOLELY AS TECHNICAL SUPPORT INCIDENT TO THE SALE AND USE OF USG PRODUCTS AND NOT INTENDED TO BE A SUBSTITUTE FOR THE DESIGN REVIEW AND APPROVAL OF THE LICENSED DESIGN PROFESSIONALS FOR THE PROJECT. THESE MATERIALS MAY BE PRINTED AND/OR TRANSFERRED ELECTRONICALLY SOLELY AS NEEDED BY THE USER, BECAUSE CAD/ELECTRONIC FILES AND BIM (BUILDING INFORMATION MODELING) FILES CAN BE MODIFIED BY OTHER PARTIES, WITHOUT NOTICE OR INDICATION OF SUCH MODIFICATIONS, MODIFICATION OF USG PRODUCT CAD AND BIM DRAWINGS IS THE SOLE RESPONSIBILITY OF THE DESIGN PROFESSIONAL. ©2021 USG CORPORATION.