

DETAIL NOTES - SHAFT WALL CORNERS

1	(1) LAYER 5/8" SHEETROCK TYPE X PANELS
2	(2) LAYERS 5/8" SHEETROCK TYPE X PANELS
3	1" SHEETROCK LINER PANEL
4	STEEL J TRACK
5	2" x 2" 20 GA. ANGLE FASTENED TO J-TRACK WITH (2) 3/8" PAN-HEAD SCREWS AT CEILING AND (2) AT FLOOR
6	PAN-HEAD SCREW 24" O.C.
7	CT, CH, OR I STUDS
8	CH STUDS
9	CORNER BEAD
10	J-RUNNER



USG Corporation
 550 West Adams Street, Chicago, IL 60661
 T. 800-USG4YOU www.USG.com

1-HOUR SHAFTWALL CORNER DETAIL

SHAFT WALL SYSTEMS DETAILS

ISSUE RECORD:
 12/13/21

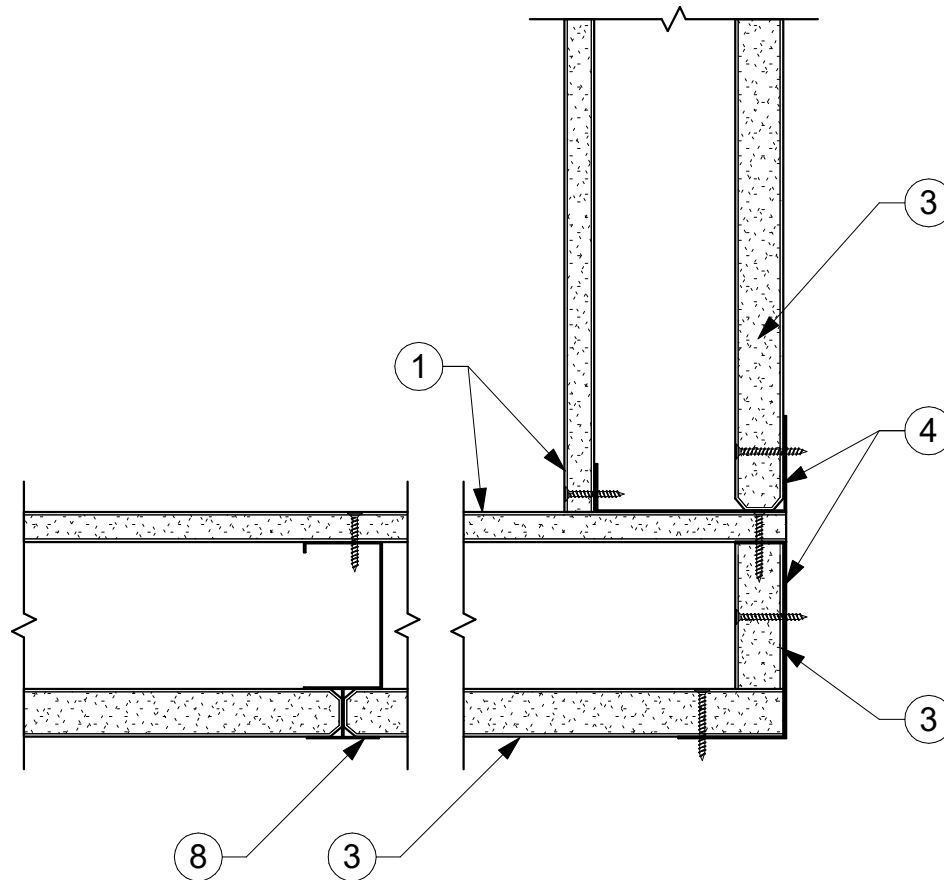
ISSUE: DATE:

SHEET INFORMATION:
 SCALE: 3" = 1'-0"

SW-CD-01.1

1-HOUR SHAFTWALL CORNER DETAIL

DISCLAIMER: THE USG PRODUCT DETAILS CONTAINED HEREIN ARE INTENDED FOR USE AS PRODUCT REFERENCE MATERIAL BY ARCHITECTS, ENGINEERS, OTHER DESIGN PROFESSIONALS, CONTRACTORS, BUILDING CODE OFFICIALS, OR OTHER COMPETENT CONSTRUCTION INDUSTRY TRADE PROFESSIONALS HAVING AN INTEREST IN THE SELECTION, SPECIFICATION AND USE OF PRODUCTS MANUFACTURED BY THE SUBSIDIARIES OF USG CORPORATION. THE DRAWINGS ARE INTENDED SOLELY AS TECHNICAL SUPPORT INCIDENT TO THE SALE AND USE OF USG PRODUCTS AND NOT INTENDED TO BE A SUBSTITUTE FOR THE DESIGN REVIEW AND APPROVAL OF THE LICENSED DESIGN PROFESSIONALS FOR THE PROJECT. THESE MATERIALS MAY BE PRINTED AND/OR TRANSFERRED ELECTRONICALLY SOLELY AS NEEDED BY THE USER, BECAUSE CAD/ELECTRONIC FILES AND BIM (BUILDING INFORMATION MODELING) FILES CAN BE MODIFIED BY OTHER PARTIES, WITHOUT NOTICE OR INDICATION OF SUCH MODIFICATIONS, MODIFICATION OF USG PRODUCT CAD AND BIM DRAWINGS IS THE SOLE RESPONSIBILITY OF THE DESIGN PROFESSIONAL. ©2021 USG CORPORATION.



DETAIL NOTES - SHAFT WALL CORNERS

1	(1) LAYER 5/8" SHEETROCK TYPE X PANELS
2	(2) LAYERS 5/8" SHEETROCK TYPE X PANELS
3	1" SHEETROCK LINER PANEL
4	STEEL J TRACK
5	2" x 2" 20 GA. ANGLE FASTENED TO J-TRACK WITH (2) 3/8" PAN-HEAD SCREWS AT CEILING AND (2) AT FLOOR
6	PAN-HEAD SCREW 24" O.C.
7	CT, CH, OR I STUDS
8	CH STUDS
9	CORNER BEAD
10	J-RUNNER



USG Corporation
 550 West Adams Street, Chicago, IL 60661
 T. 800-USG4YOU www.USG.com

1-HOUR SHAFTWALL CORNER DETAIL

SHAFT WALL SYSTEMS DETAILS

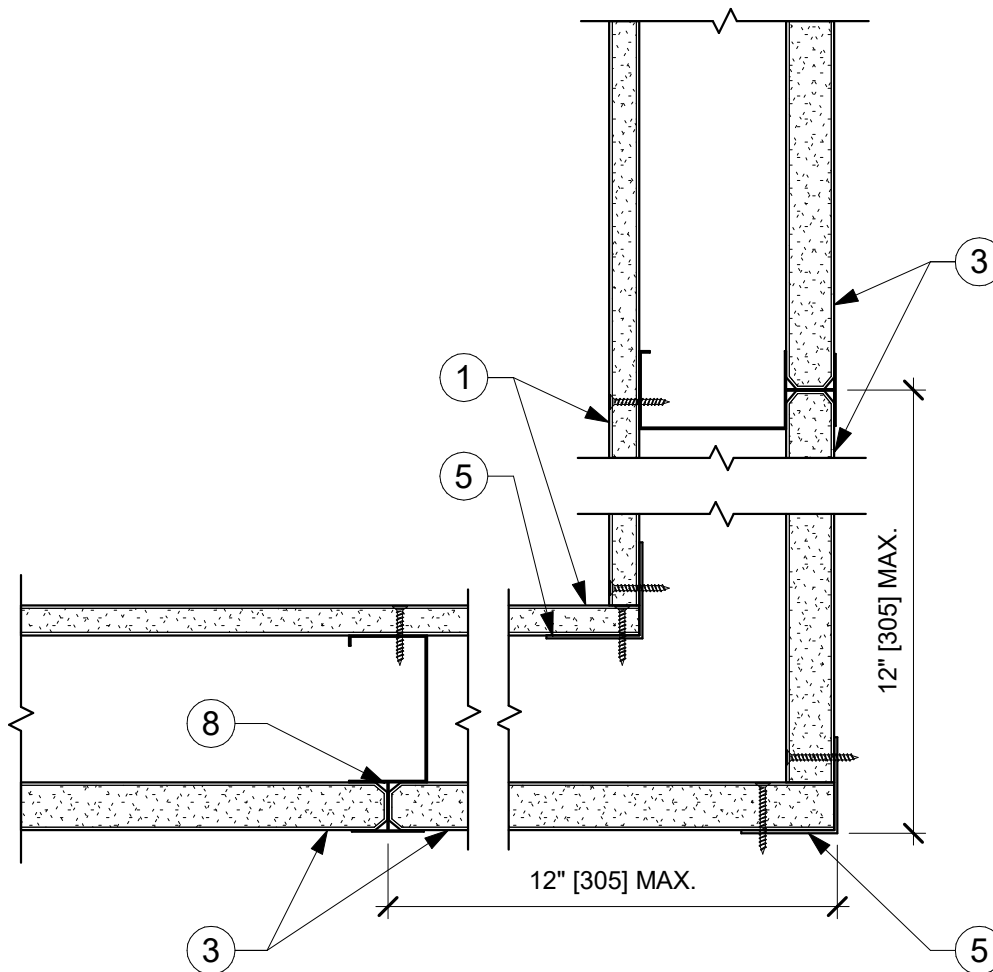
ISSUE RECORD:
 12/13/21

ISSUE: DATE:

SHEET INFORMATION:
 SCALE: 3" = 1'-0"

SW-CD-01.2

1-HOUR SHAFTWALL CORNER DETAIL



DETAIL NOTES - SHAFT WALL CORNERS

1	(1) LAYER 5/8" SHEETROCK TYPE X PANELS
2	(2) LAYERS 5/8" SHEETROCK TYPE X PANELS
3	1" SHEETROCK LINER PANEL
4	STEEL J TRACK
5	2" x 2" 20 GA. ANGLE FASTENED TO J-TRACK WITH (2) 3/8" PAN-HEAD SCREWS AT CEILING AND (2) AT FLOOR
6	PAN-HEAD SCREW 24" O.C.
7	CT, CH, OR I STUDS
8	CH STUDS
9	CORNER BEAD
10	J-RUNNER



USG Corporation
 550 West Adams Street, Chicago, IL 60661
 T. 800-USG4YOU www.USG.com

1-HOUR SHAFTWALL CORNER DETAIL

SHAFT WALL SYSTEMS DETAILS

ISSUE RECORD:
 12/13/21

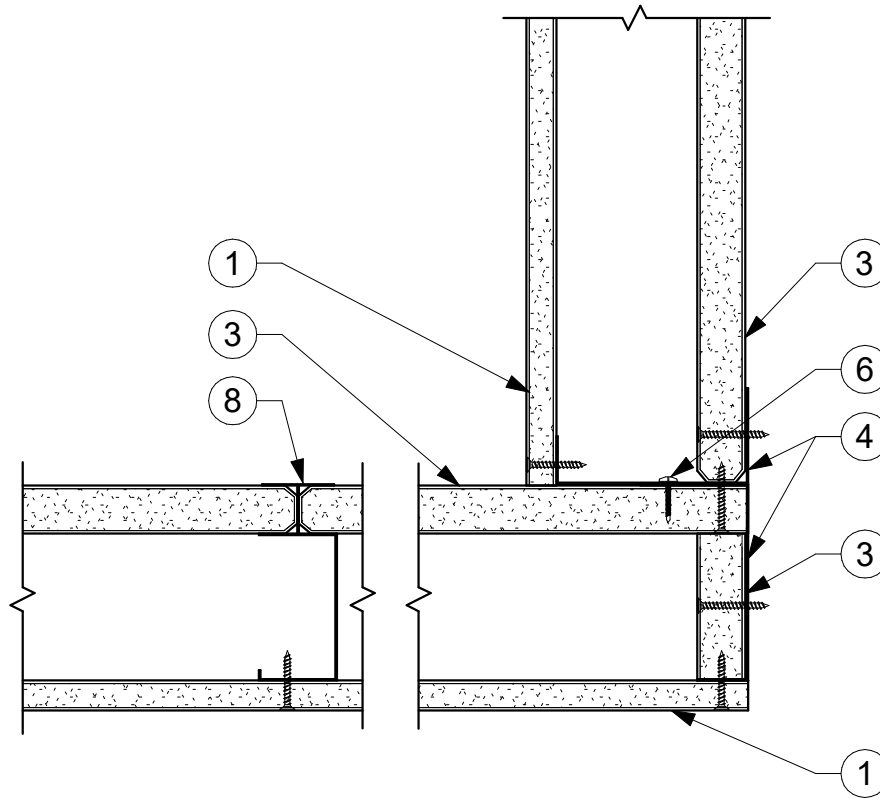
ISSUE: DATE:

SHEET INFORMATION:
 SCALE: 3" = 1'-0"

SW-CD-01.3

1-HOUR SHAFTWALL CORNER DETAIL

DISCLAIMER: THE USG PRODUCT DETAILS CONTAINED HEREIN ARE INTENDED FOR USE AS PRODUCT REFERENCE MATERIAL BY ARCHITECTS, ENGINEERS, OTHER DESIGN PROFESSIONALS, CONTRACTORS, BUILDING CODE OFFICIALS, OR OTHER COMPETENT CONSTRUCTION INDUSTRY TRADE PROFESSIONALS HAVING AN INTEREST IN THE SELECTION, SPECIFICATION AND USE OF PRODUCTS MANUFACTURED BY THE SUBSIDIARIES OF USG CORPORATION. THE DRAWINGS ARE INTENDED SOLELY AS TECHNICAL SUPPORT INCIDENT TO THE SALE AND USE OF USG PRODUCTS AND NOT INTENDED TO BE A SUBSTITUTE FOR THE DESIGN REVIEW AND APPROVAL OF THE LICENSED DESIGN PROFESSIONALS FOR THE PROJECT. THESE MATERIALS MAY BE PRINTED AND/OR TRANSFERRED ELECTRONICALLY SOLELY AS NEEDED BY THE USER, BECAUSE CAD/ELECTRONIC FILES AND BIM (BUILDING INFORMATION MODELING) FILES CAN BE MODIFIED BY OTHER PARTIES, WITHOUT NOTICE OR INDICATION OF SUCH MODIFICATIONS, MODIFICATION OF USG PRODUCT CAD AND BIM DRAWINGS IS THE SOLE RESPONSIBILITY OF THE DESIGN PROFESSIONAL. ©2021 USG CORPORATION.



DETAIL NOTES - SHAFT WALL CORNERS

1	(1) LAYER 5/8" SHEETROCK TYPE X PANELS
2	(2) LAYERS 5/8" SHEETROCK TYPE X PANELS
3	1" SHEETROCK LINER PANEL
4	STEEL J TRACK
5	2" x 2" 20 GA. ANGLE FASTENED TO J-TRACK WITH (2) 3/8" PAN-HEAD SCREWS AT CEILING AND (2) AT FLOOR
6	PAN-HEAD SCREW 24" O.C.
7	CT, CH, OR I STUDS
8	CH STUDS
9	CORNER BEAD
10	J-RUNNER



USG Corporation
 550 West Adams Street, Chicago, IL 60661
 T. 800-USG4YOU www.USG.com

1-HOUR SHAFTWALL CORNER DETAIL

SHAFT WALL SYSTEMS DETAILS

ISSUE RECORD:
 12/13/21

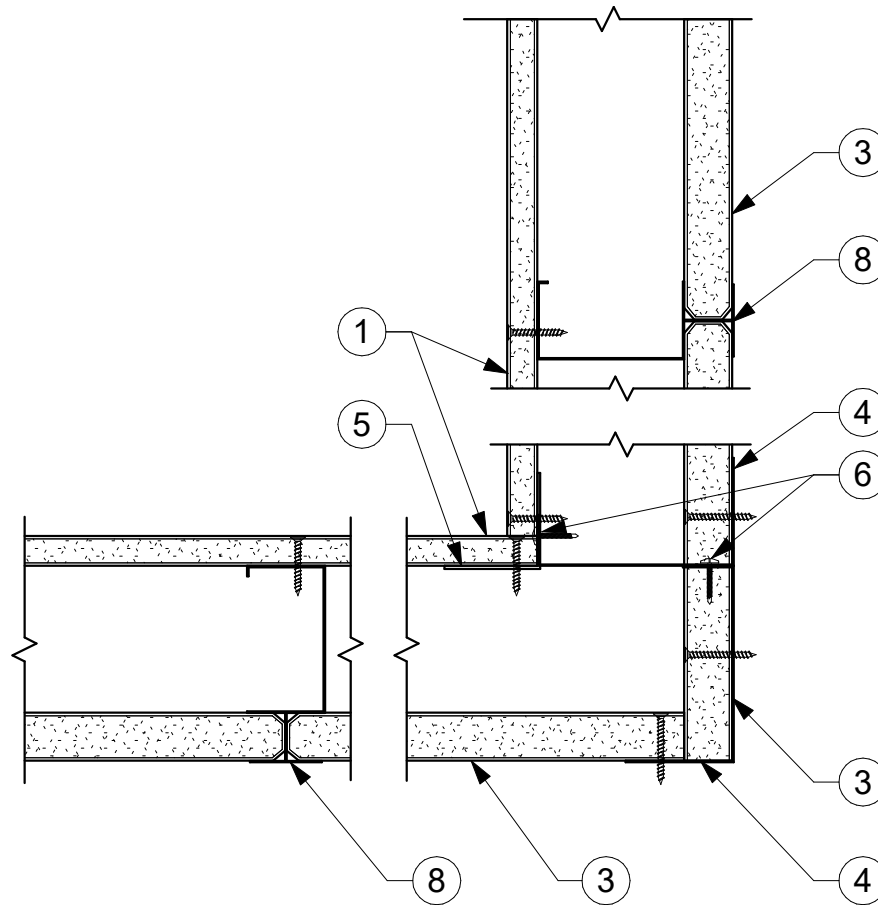
ISSUE: DATE:

SHEET INFORMATION:
 SCALE: 3" = 1'-0"

SW-CD-01.4

1-HOUR SHAFTWALL CORNER DETAIL

DISCLAIMER: THE USG PRODUCT DETAILS CONTAINED HEREIN ARE INTENDED FOR USE AS PRODUCT REFERENCE MATERIAL BY ARCHITECTS, ENGINEERS, OTHER DESIGN PROFESSIONALS, CONTRACTORS, BUILDING CODE OFFICIALS, OR OTHER COMPETENT CONSTRUCTION INDUSTRY TRADE PROFESSIONALS HAVING AN INTEREST IN THE SELECTION, SPECIFICATION AND USE OF PRODUCTS MANUFACTURED BY THE SUBSIDIARIES OF USG CORPORATION. THE DRAWINGS ARE INTENDED SOLELY AS TECHNICAL SUPPORT INCIDENT TO THE SALE AND USE OF USG PRODUCTS AND NOT INTENDED TO BE A SUBSTITUTE FOR THE DESIGN REVIEW AND APPROVAL OF THE LICENSED DESIGN PROFESSIONALS FOR THE PROJECT. THESE MATERIALS MAY BE PRINTED AND/OR TRANSFERRED ELECTRONICALLY SOLELY AS NEEDED BY THE USER, BECAUSE CAD/ELECTRONIC FILES AND BIM (BUILDING INFORMATION MODELING) FILES CAN BE MODIFIED BY OTHER PARTIES, WITHOUT NOTICE OR INDICATION OF SUCH MODIFICATIONS, MODIFICATION OF USG PRODUCT CAD AND BIM DRAWINGS IS THE SOLE RESPONSIBILITY OF THE DESIGN PROFESSIONAL. ©2021 USG CORPORATION.



DETAIL NOTES - SHAFT WALL CORNERS

1	(1) LAYER 5/8" SHEETROCK TYPE X PANELS
2	(2) LAYERS 5/8" SHEETROCK TYPE X PANELS
3	1" SHEETROCK LINER PANEL
4	STEEL J TRACK
5	2" x 2" 20 GA. ANGLE FASTENED TO J-TRACK WITH (2) 3/8" PAN-HEAD SCREWS AT CEILING AND (2) AT FLOOR
6	PAN-HEAD SCREW 24" O.C.
7	CT, CH, OR I STUDS
8	CH STUDS
9	CORNER BEAD
10	J-RUNNER



USG Corporation
 550 West Adams Street, Chicago, IL 60661
 T. 800-USG4YOU www.USG.com

1-HOUR SHAFTWALL CORNER DETAIL

SHAFT WALL SYSTEMS DETAILS

ISSUE RECORD:
 12/13/21

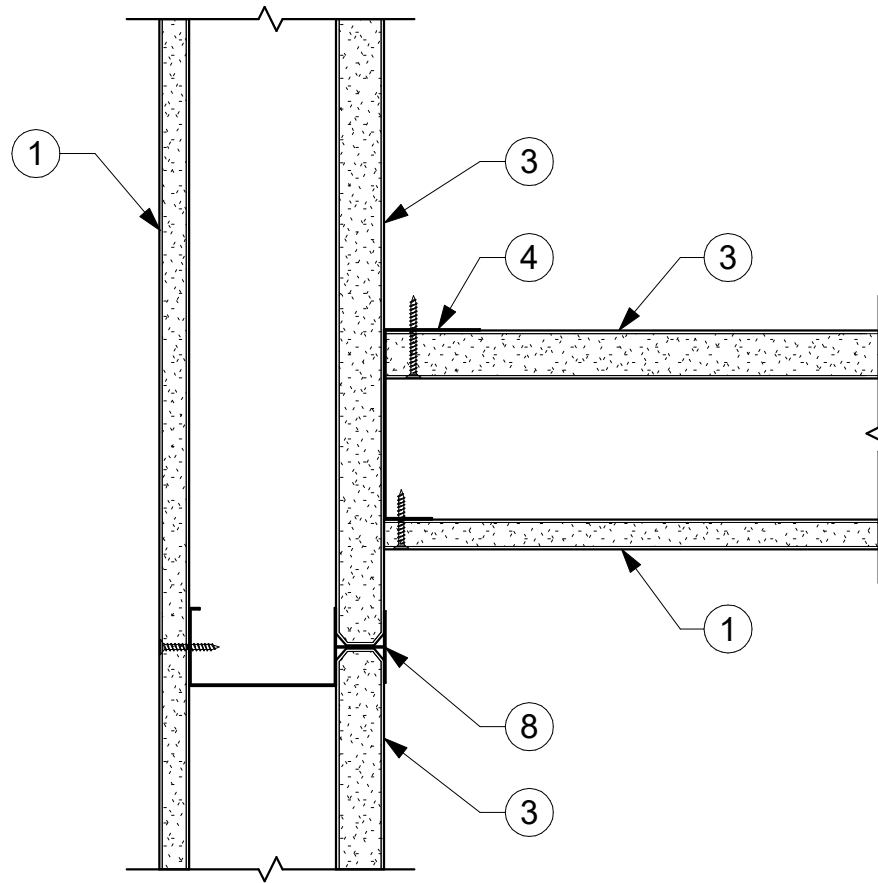
ISSUE: DATE:

SHEET INFORMATION:
 SCALE: 3" = 1'-0"

SW-CD-01.5

1-HOUR SHAFTWALL CORNER DETAIL

DISCLAIMER: THE USG PRODUCT DETAILS CONTAINED HEREIN ARE INTENDED FOR USE AS PRODUCT REFERENCE MATERIAL BY ARCHITECTS, ENGINEERS, OTHER DESIGN PROFESSIONALS, CONTRACTORS, BUILDING CODE OFFICIALS, OR OTHER COMPETENT CONSTRUCTION INDUSTRY TRADE PROFESSIONALS HAVING AN INTEREST IN THE SELECTION, SPECIFICATION AND USE OF PRODUCTS MANUFACTURED BY THE SUBSIDIARIES OF USG CORPORATION. THE DRAWINGS ARE INTENDED SOLELY AS TECHNICAL SUPPORT INCIDENT TO THE SALE AND USE OF USG PRODUCTS AND NOT INTENDED TO BE A SUBSTITUTE FOR THE DESIGN REVIEW AND APPROVAL OF THE LICENSED DESIGN PROFESSIONALS FOR THE PROJECT. THESE MATERIALS MAY BE PRINTED AND/OR TRANSFERRED ELECTRONICALLY SOLELY AS NEEDED BY THE USER, BECAUSE CAD/ELECTRONIC FILES AND BIM (BUILDING INFORMATION MODELING) FILES CAN BE MODIFIED BY OTHER PARTIES, WITHOUT NOTICE OR INDICATION OF SUCH MODIFICATIONS, MODIFICATION OF USG PRODUCT CAD AND BIM DRAWINGS IS THE SOLE RESPONSIBILITY OF THE DESIGN PROFESSIONAL. ©2021 USG CORPORATION.



DETAIL NOTES - SHAFT WALL CORNERS

1	(1) LAYER 5/8" SHEETROCK TYPE X PANELS
2	(2) LAYERS 5/8" SHEETROCK TYPE X PANELS
3	1" SHEETROCK LINER PANEL
4	STEEL J TRACK
5	2" x 2" 20 GA. ANGLE FASTENED TO J-TRACK WITH (2) 3/8" PAN-HEAD SCREWS AT CEILING AND (2) AT FLOOR
6	PAN-HEAD SCREW 24" O.C.
7	CT, CH, OR I STUDS
8	CH STUDS
9	CORNER BEAD
10	J-RUNNER



USG Corporation
 550 West Adams Street, Chicago, IL 60661
 T. 800-USG4YOU www.USG.com

1-HOUR SHAFTWALL CORNER DETAIL

SHAFT WALL SYSTEMS DETAILS

ISSUE RECORD:
 12/13/21

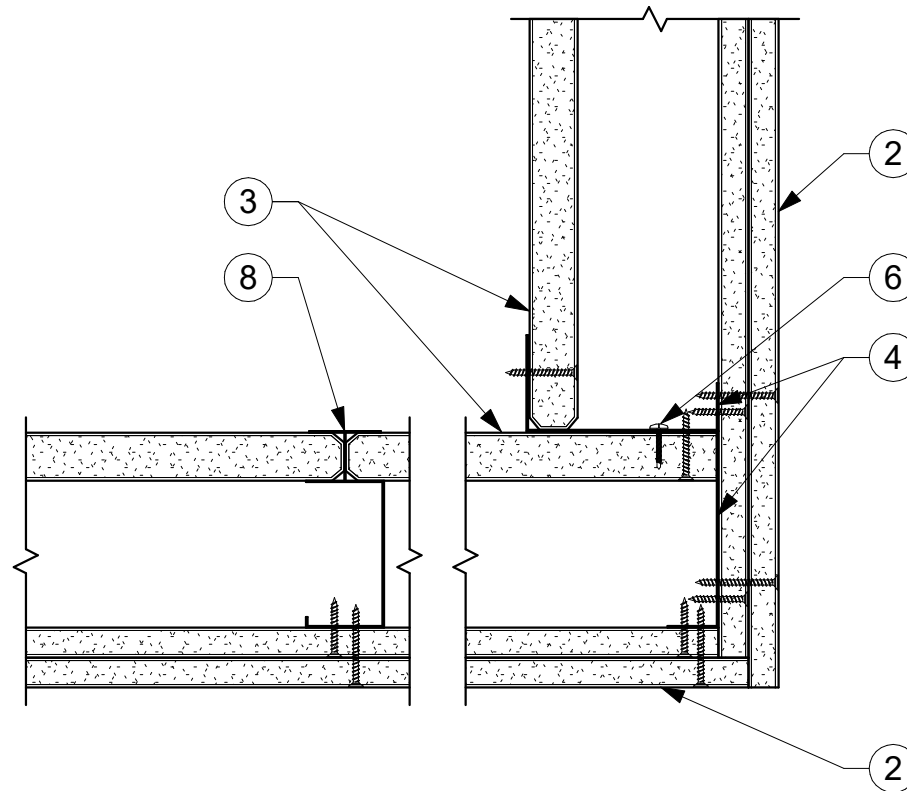
ISSUE: DATE:

SHEET INFORMATION:
 SCALE: 3" = 1'-0"

SW-CD-01.6

1-HOUR SHAFTWALL CORNER DETAIL

DISCLAIMER: THE USG PRODUCT DETAILS CONTAINED HEREIN ARE INTENDED FOR USE AS PRODUCT REFERENCE MATERIAL BY ARCHITECTS, ENGINEERS, OTHER DESIGN PROFESSIONALS, CONTRACTORS, BUILDING CODE OFFICIALS, OR OTHER COMPETENT CONSTRUCTION INDUSTRY TRADE PROFESSIONALS HAVING AN INTEREST IN THE SELECTION, SPECIFICATION AND USE OF PRODUCTS MANUFACTURED BY THE SUBSIDIARIES OF USG CORPORATION. THE DRAWINGS ARE INTENDED SOLELY AS TECHNICAL SUPPORT INCIDENT TO THE SALE AND USE OF USG PRODUCTS AND NOT INTENDED TO BE A SUBSTITUTE FOR THE DESIGN REVIEW AND APPROVAL OF THE LICENSED DESIGN PROFESSIONALS FOR THE PROJECT. THESE MATERIALS MAY BE PRINTED AND/OR TRANSFERRED ELECTRONICALLY SOLELY AS NEEDED BY THE USER, BECAUSE CAD/ELECTRONIC FILES AND BIM (BUILDING INFORMATION MODELING) FILES CAN BE MODIFIED BY OTHER PARTIES, WITHOUT NOTICE OR INDICATION OF SUCH MODIFICATIONS, MODIFICATION OF USG PRODUCT CAD AND BIM DRAWINGS IS THE SOLE RESPONSIBILITY OF THE DESIGN PROFESSIONAL. ©2021 USG CORPORATION.



DETAIL NOTES - SHAFT WALL CORNERS

1	(1) LAYER 5/8" SHEETROCK TYPE X PANELS
2	(2) LAYERS 5/8" SHEETROCK TYPE X PANELS
3	1" SHEETROCK LINER PANEL
4	STEEL J TRACK
5	2" x 2" 20 GA. ANGLE FASTENED TO J-TRACK WITH (2) 3/8" PAN-HEAD SCREWS AT CEILING AND (2) AT FLOOR
6	PAN-HEAD SCREW 24" O.C.
7	CT, CH, OR I STUDS
8	CH STUDS
9	CORNER BEAD
10	J-RUNNER



USG Corporation
 550 West Adams Street, Chicago, IL 60661
 T. 800-USG4YOU www.USG.com

2-HOUR SHAFTWALL CORNER DETAIL

SHAFT WALL SYSTEMS DETAILS

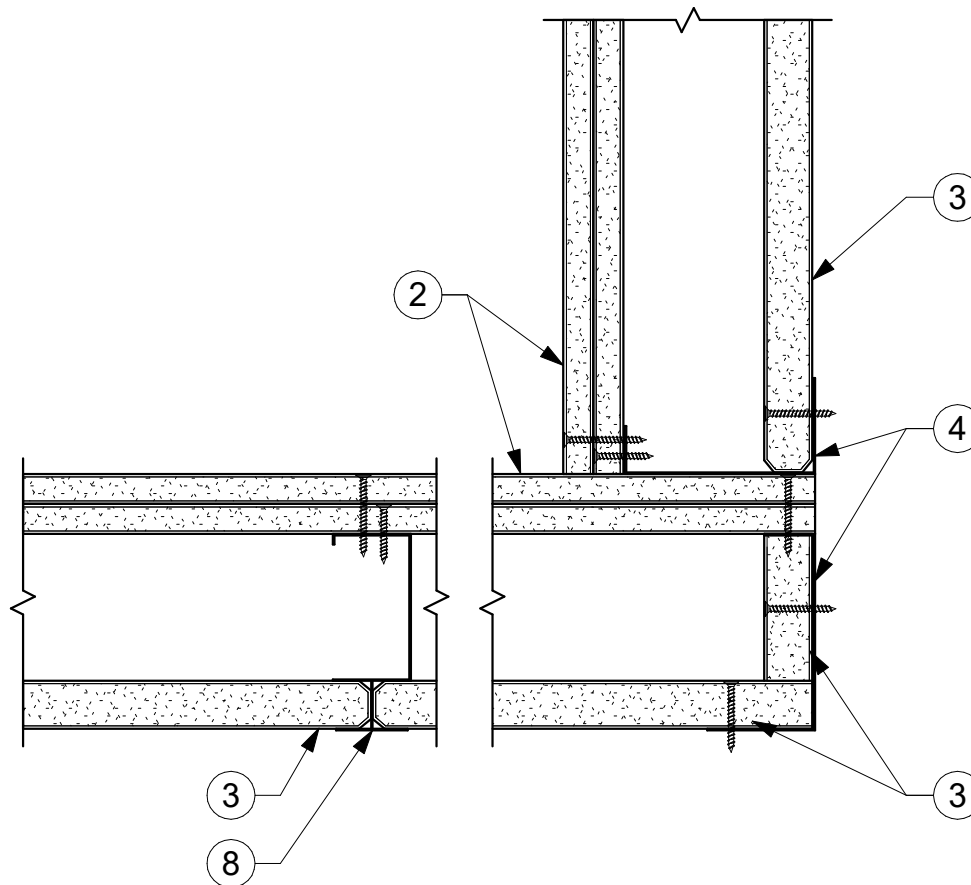
ISSUE RECORD:
 12/13/21

ISSUE: DATE:

SHEET INFORMATION:
 SCALE: 3" = 1'-0"

SW-CD-02.1

2-HOUR SHAFTWALL CORNER DETAIL



DETAIL NOTES - SHAFT WALL CORNERS

1	(1) LAYER 5/8" SHEETROCK TYPE X PANELS
2	(2) LAYERS 5/8" SHEETROCK TYPE X PANELS
3	1" SHEETROCK LINER PANEL
4	STEEL J TRACK
5	2" x 2" 20 GA. ANGLE FASTENED TO J-TRACK WITH (2) 3/8" PAN-HEAD SCREWS AT CEILING AND (2) AT FLOOR
6	PAN-HEAD SCREW 24" O.C.
7	CT, CH, OR I STUDS
8	CH STUDS
9	CORNER BEAD
10	J-RUNNER



USG Corporation
550 West Adams Street, Chicago, IL 60661
T. 800-USG4YOU www.USG.com

2-HOUR SHAFTWALL CORNER DETAIL

SHAFT WALL SYSTEMS DETAILS

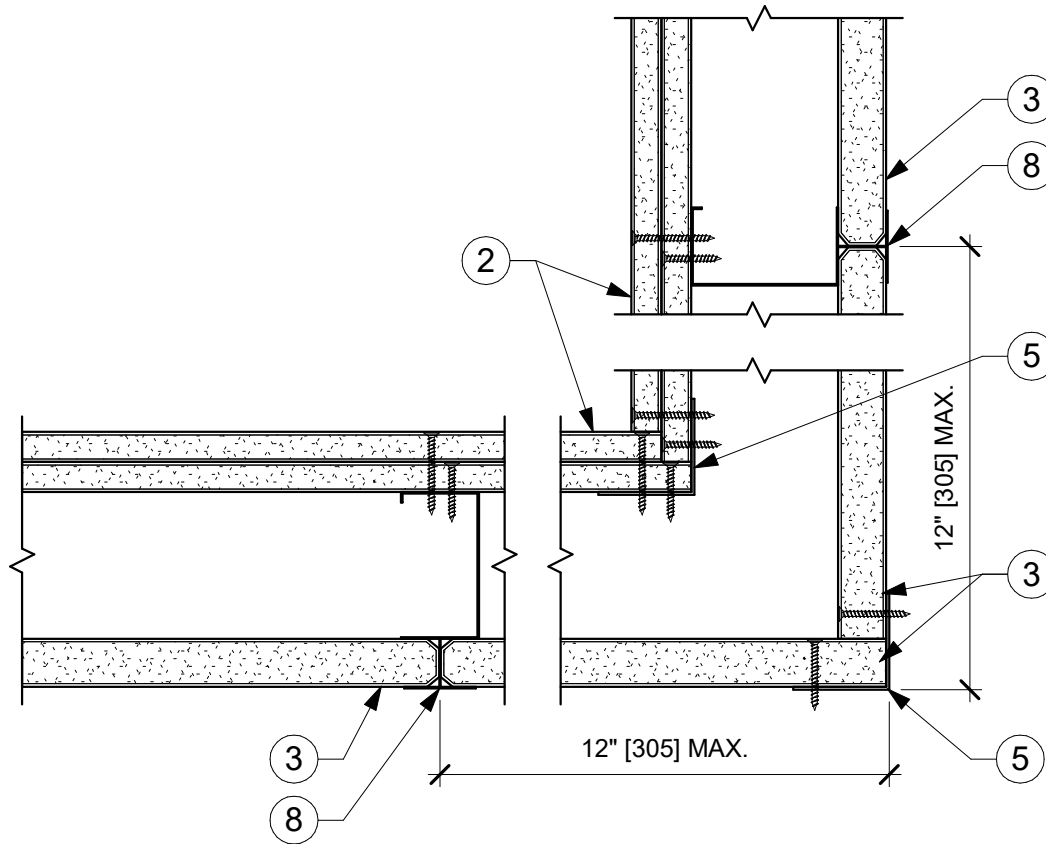
ISSUE RECORD:
12/13/21

ISSUE: DATE:

SHEET INFORMATION:
SCALE: 3" = 1'-0"

SW-CD-02.2

2-HOUR SHAFTWALL CORNER DETAIL



DETAIL NOTES - SHAFT WALL CORNERS

1	(1) LAYER 5/8" SHEETROCK TYPE X PANELS
2	(2) LAYERS 5/8" SHEETROCK TYPE X PANELS
3	1" SHEETROCK LINER PANEL
4	STEEL J TRACK
5	2" x 2" 20 GA. ANGLE FASTENED TO J-TRACK WITH (2) 3/8" PAN-HEAD SCREWS AT CEILING AND (2) AT FLOOR
6	PAN-HEAD SCREW 24" O.C.
7	CT, CH, OR I STUDS
8	CH STUDS
9	CORNER BEAD
10	J-RUNNER



USG Corporation
 550 West Adams Street, Chicago, IL 60661
 T. 800-USG4YOU www.USG.com

2-HOUR SHAFTWALL CORNER DETAIL

SHAFT WALL SYSTEMS DETAILS

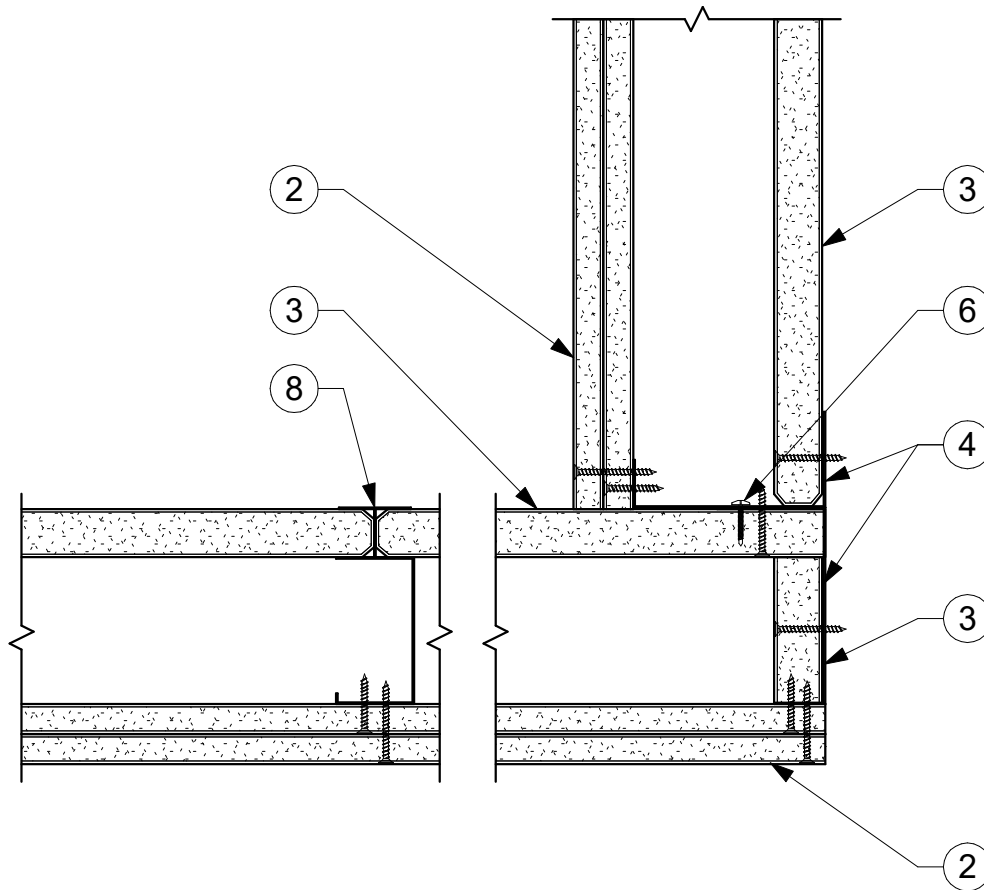
ISSUE RECORD:
 12/13/21

ISSUE: DATE:

SHEET INFORMATION:
 SCALE: 3" = 1'-0"

SW-CD-02.3

2-HOUR SHAFTWALL CORNER DETAIL



DETAIL NOTES - SHAFT WALL CORNERS

1	(1) LAYER 5/8" SHEETROCK TYPE X PANELS
2	(2) LAYERS 5/8" SHEETROCK TYPE X PANELS
3	1" SHEETROCK LINER PANEL
4	STEEL J TRACK
5	2" x 2" 20 GA. ANGLE FASTENED TO J-TRACK WITH (2) 3/8" PAN-HEAD SCREWS AT CEILING AND (2) AT FLOOR
6	PAN-HEAD SCREW 24" O.C.
7	CT, CH, OR I STUDS
8	CH STUDS
9	CORNER BEAD
10	J-RUNNER



USG Corporation
 550 West Adams Street, Chicago, IL 60661
 T. 800-USG4YOU www.USG.com

2-HOUR SHAFTWALL CORNER DETAIL

SHAFT WALL SYSTEMS DETAILS

ISSUE RECORD:
 12/13/21

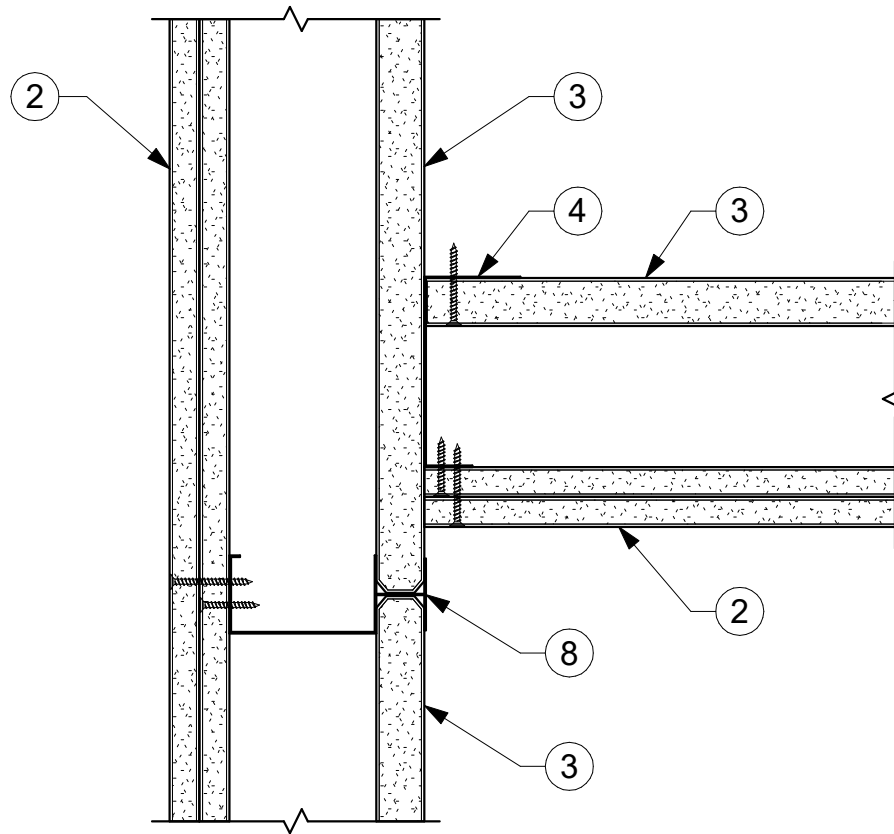
ISSUE: DATE:

SHEET INFORMATION:
 SCALE: 3" = 1'-0"

SW-CD-02.4

2-HOUR SHAFTWALL CORNER DETAIL

DISCLAIMER: THE USG PRODUCT DETAILS CONTAINED HEREIN ARE INTENDED FOR USE AS PRODUCT REFERENCE MATERIAL BY ARCHITECTS, ENGINEERS, OTHER DESIGN PROFESSIONALS, CONTRACTORS, BUILDING CODE OFFICIALS, OR OTHER COMPETENT CONSTRUCTION INDUSTRY TRADE PROFESSIONALS HAVING AN INTEREST IN THE SELECTION, SPECIFICATION AND USE OF PRODUCTS MANUFACTURED BY THE SUBSIDIARIES OF USG CORPORATION. THE DRAWINGS ARE INTENDED SOLELY AS TECHNICAL SUPPORT INCIDENT TO THE SALE AND USE OF USG PRODUCTS AND NOT INTENDED TO BE A SUBSTITUTE FOR THE DESIGN REVIEW AND APPROVAL OF THE LICENSED DESIGN PROFESSIONALS FOR THE PROJECT. THESE MATERIALS MAY BE PRINTED AND/OR TRANSFERRED ELECTRONICALLY SOLELY AS NEEDED BY THE USER, BECAUSE CAD/ELECTRONIC FILES AND BIM (BUILDING INFORMATION MODELING) FILES CAN BE MODIFIED BY OTHER PARTIES, WITHOUT NOTICE OR INDICATION OF SUCH MODIFICATIONS, MODIFICATION OF USG PRODUCT CAD AND BIM DRAWINGS IS THE SOLE RESPONSIBILITY OF THE DESIGN PROFESSIONAL. ©2021 USG CORPORATION.



DETAIL NOTES - SHAFT WALL CORNERS

1	(1) LAYER 5/8" SHEETROCK TYPE X PANELS
2	(2) LAYERS 5/8" SHEETROCK TYPE X PANELS
3	1" SHEETROCK LINER PANEL
4	STEEL J TRACK
5	2" x 2" 20 GA. ANGLE FASTENED TO J-TRACK WITH (2) 3/8" PAN-HEAD SCREWS AT CEILING AND (2) AT FLOOR
6	PAN-HEAD SCREW 24" O.C.
7	CT, CH, OR I STUDS
8	CH STUDS
9	CORNER BEAD
10	J-RUNNER



USG Corporation
 550 West Adams Street, Chicago, IL 60661
 T. 800-USG4YOU www.USG.com

2-HOUR SHAFTWALL CORNER DETAIL

SHAFT WALL SYSTEMS DETAILS

ISSUE RECORD:
 12/13/21

ISSUE: DATE:

SHEET INFORMATION:
 SCALE: 3" = 1'-0"

SW-CD-02.5

2-HOUR SHAFTWALL CORNER DETAIL

DISCLAIMER: THE USG PRODUCT DETAILS CONTAINED HEREIN ARE INTENDED FOR USE AS PRODUCT REFERENCE MATERIAL BY ARCHITECTS, ENGINEERS, OTHER DESIGN PROFESSIONALS, CONTRACTORS, BUILDING CODE OFFICIALS, OR OTHER COMPETENT CONSTRUCTION INDUSTRY TRADE PROFESSIONALS HAVING AN INTEREST IN THE SELECTION, SPECIFICATION AND USE OF PRODUCTS MANUFACTURED BY THE SUBSIDIARIES OF USG CORPORATION. THE DRAWINGS ARE INTENDED SOLELY AS TECHNICAL SUPPORT INCIDENT TO THE SALE AND USE OF USG PRODUCTS AND NOT INTENDED TO BE A SUBSTITUTE FOR THE DESIGN REVIEW AND APPROVAL OF THE LICENSED DESIGN PROFESSIONALS FOR THE PROJECT. THESE MATERIALS MAY BE PRINTED AND/OR TRANSFERRED ELECTRONICALLY SOLELY AS NEEDED BY THE USER, BECAUSE CAD/ELECTRONIC FILES AND BIM (BUILDING INFORMATION MODELING) FILES CAN BE MODIFIED BY OTHER PARTIES, WITHOUT NOTICE OR INDICATION OF SUCH MODIFICATIONS, MODIFICATION OF USG PRODUCT CAD AND BIM DRAWINGS IS THE SOLE RESPONSIBILITY OF THE DESIGN PROFESSIONAL. ©2021 USG CORPORATION.

SHAFT

DETAIL NOTES - SHAFT WALL CORNERS

1	(1) LAYER 5/8" SHEETROCK TYPE X PANELS
2	(2) LAYERS 5/8" SHEETROCK TYPE X PANELS
3	1" SHEETROCK LINER PANEL
4	STEEL J TRACK
5	2" x 2" 20 GA. ANGLE FASTENED TO J-TRACK WITH (2) 3/8" PAN-HEAD SCREWS AT CEILING AND (2) AT FLOOR
6	PAN-HEAD SCREW 24" O.C.
7	CT, CH, OR I STUDS
8	CH STUDS
9	CORNER BEAD
10	J-RUNNER

2-HOUR SHAFTWALL CORNER DETAIL SHAFT WALL SYSTEMS DETAILS

ISSUE RECORD:
12/13/21

ISSUE: DATE:

SHEET INFORMATION:
SCALE: 3" = 1'-0"

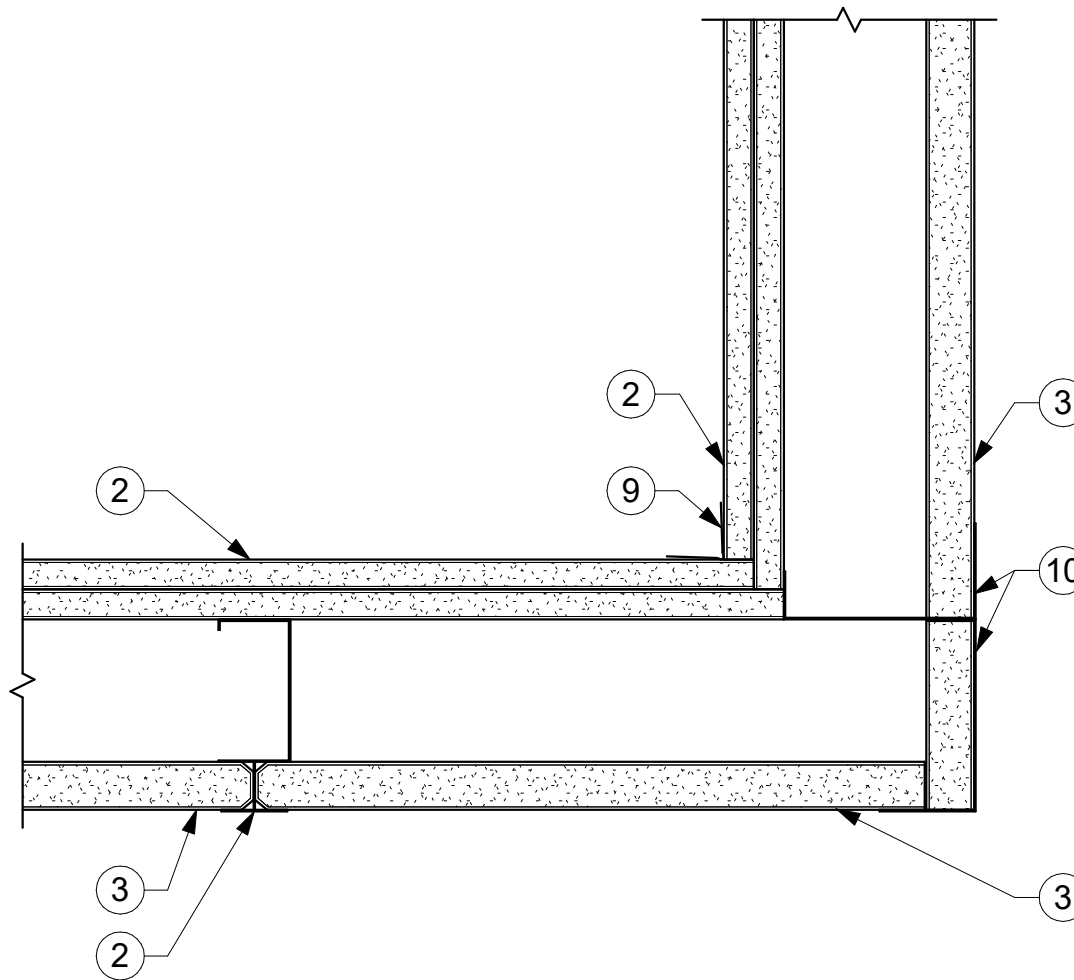
SW-CD-02.6

2-HOUR SHAFTWALL CORNER DETAIL



USG Corporation
550 West Adams Street, Chicago, IL 60661
T. 800-USG4YOU www.USG.com

DISCLAIMER: THE USG PRODUCT DETAILS CONTAINED HEREIN ARE INTENDED FOR USE AS PRODUCT REFERENCE MATERIAL BY ARCHITECTS, ENGINEERS, OTHER DESIGN PROFESSIONALS, CONTRACTORS, BUILDING CODE OFFICIALS, OR OTHER COMPETENT CONSTRUCTION INDUSTRY TRADE PROFESSIONALS HAVING AN INTEREST IN THE SELECTION, SPECIFICATION AND USE OF PRODUCTS MANUFACTURED BY THE SUBSIDIARIES OF USG CORPORATION. THE DRAWINGS ARE INTENDED SOLELY AS TECHNICAL SUPPORT INCIDENT TO THE SALE AND USE OF USG PRODUCTS AND NOT INTENDED TO BE A SUBSTITUTE FOR THE DESIGN REVIEW AND APPROVAL OF THE LICENSED DESIGN PROFESSIONALS FOR THE PROJECT. THESE MATERIALS MAY BE PRINTED AND/OR TRANSFERRED ELECTRONICALLY SOLELY AS NEEDED BY THE USER, BECAUSE CAD ELECTRONIC FILES AND BIM (BUILDING INFORMATION MODELING) FILES CAN BE MODIFIED BY OTHER PARTIES, WITHOUT NOTICE OR INDICATION OF SUCH MODIFICATIONS, MODIFICATION OF USG PRODUCT CAD AND BIM DRAWINGS IS THE SOLE RESPONSIBILITY OF THE DESIGN PROFESSIONAL. ©2021 USG CORPORATION.



DETAIL NOTES - SHAFT WALL CORNERS

1	(1) LAYER 5/8" SHEETROCK TYPE X PANELS
2	(2) LAYERS 5/8" SHEETROCK TYPE X PANELS
3	1" SHEETROCK LINER PANEL
4	STEEL J TRACK
5	2" x 2" 20 GA. ANGLE FASTENED TO J-TRACK WITH (2) 3/8" PAN-HEAD SCREWS AT CEILING AND (2) AT FLOOR
6	PAN-HEAD SCREW 24" O.C.
7	CT, CH, OR I STUDS
8	CH STUDS
9	CORNER BEAD
10	J-RUNNER



USG Corporation
 550 West Adams Street, Chicago, IL 60661
 T. 800-USG4YOU www.USG.com

2-HOUR SHAFTWALL CORNER DETAIL

SHAFT WALL SYSTEMS DETAILS

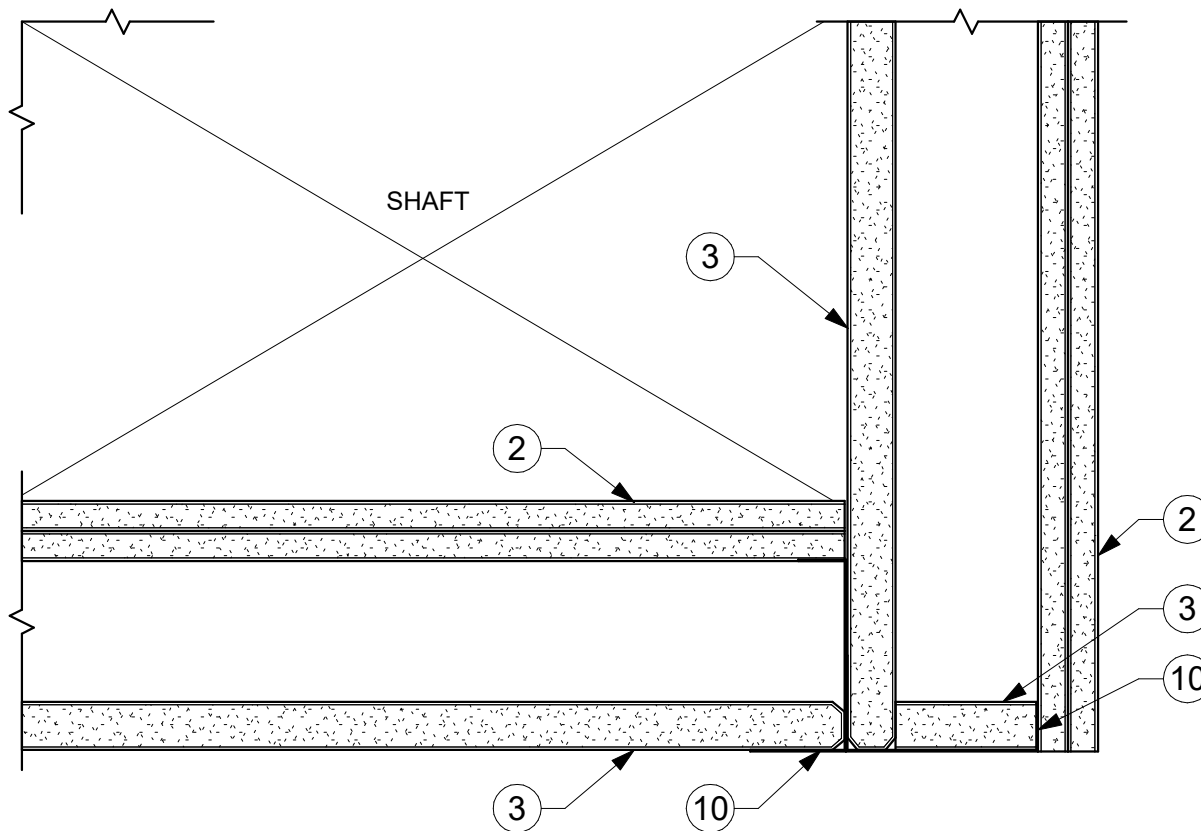
ISSUE RECORD:
 12/13/21

ISSUE: DATE:

SHEET INFORMATION:
 SCALE: 3" = 1'-0"

SW-CD-02.7

2-HOUR SHAFTWALL CORNER DETAIL



DETAIL NOTES - SHAFT WALL CORNERS

1	(1) LAYER 5/8" SHEETROCK TYPE X PANELS
2	(2) LAYERS 5/8" SHEETROCK TYPE X PANELS
3	1" SHEETROCK LINER PANEL
4	STEEL J TRACK
5	2" x 2" 20 GA. ANGLE FASTENED TO J-TRACK WITH (2) 3/8" PAN-HEAD SCREWS AT CEILING AND (2) AT FLOOR
6	PAN-HEAD SCREW 24" O.C.
7	CT, CH, OR I STUDS
8	CH STUDS
9	CORNER BEAD
10	J-RUNNER



USG Corporation
550 West Adams Street, Chicago, IL 60661
T. 800-USG4YOU www.USG.com

2-HOUR SHAFTWALL CORNER DETAIL

SHAFT WALL SYSTEMS DETAILS

ISSUE RECORD:
12/13/21

ISSUE: DATE:

SHEET INFORMATION:
SCALE: 3" = 1'-0"

SW-CD-02.8

2-HOUR SHAFTWALL CORNER DETAIL

DISCLAIMER: THE USG PRODUCT DETAILS CONTAINED HEREIN ARE INTENDED FOR USE AS PRODUCT REFERENCE MATERIAL BY ARCHITECTS, ENGINEERS, OTHER DESIGN PROFESSIONALS, CONTRACTORS, BUILDING CODE OFFICIALS, OR OTHER COMPETENT CONSTRUCTION INDUSTRY TRADE PROFESSIONALS HAVING AN INTEREST IN THE SELECTION, SPECIFICATION AND USE OF PRODUCTS MANUFACTURED BY THE SUBSIDIARIES OF USG CORPORATION. THE DRAWINGS ARE INTENDED SOLELY AS TECHNICAL SUPPORT INCIDENT TO THE SALE AND USE OF USG PRODUCTS AND NOT INTENDED TO BE A SUBSTITUTE FOR THE DESIGN REVIEW AND APPROVAL OF THE LICENSED DESIGN PROFESSIONALS FOR THE PROJECT. THESE MATERIALS MAY BE PRINTED AND/OR TRANSFERRED ELECTRONICALLY SOLELY AS NEEDED BY THE USER, BECAUSE CAD/ELECTRONIC FILES AND BIM (BUILDING INFORMATION MODELING) FILES CAN BE MODIFIED BY OTHER PARTIES, WITHOUT NOTICE OR INDICATION OF SUCH MODIFICATIONS, MODIFICATION OF USG PRODUCT CAD AND BIM DRAWINGS IS THE SOLE RESPONSIBILITY OF THE DESIGN PROFESSIONAL. ©2021 USG CORPORATION.