

CEILINGSPUS®

**USG Corporation**  
550 West Adams Street, Chicago, IL 60661-3676 1.800-USG4YOU

## PLANX™ SYSTEM DETAILS

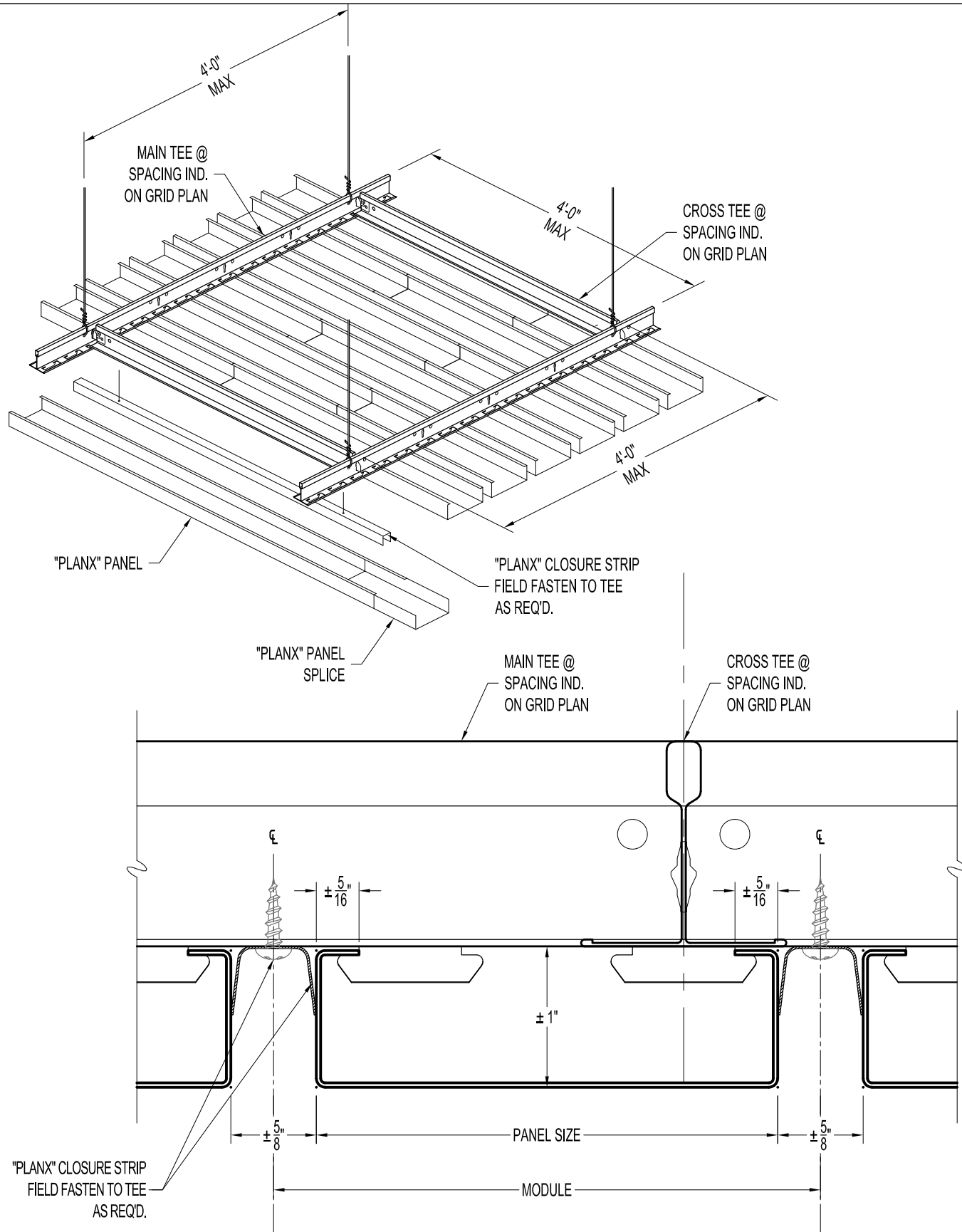
### Access Panel Field Cut & Tees to Assemble

SHEET: PLANX-ACC-2

SCALE: N.T.S.

ISSUE DATE: 10/8/2021

© USG CEILINGSPUS 2021. The USG Product Specifications contained herein are intended for use as product reference material by architects, engineers, contractors, building code officials, or other competent construction industry professionals having an interest in the selection, specification, and use of products manufactured by USG Corporation and its subsidiaries. These Specifications are intended solely as technical support incident to the sale and use of USG products and not intended to be a substitute for the review and approval of the licensed design professionals for the project. These materials may be printed and/or transferred electronically solely as needed by the user. Because electronic CAD & BIM files can be modified by other parties without notice or indication, any alteration of such files and their contents become the responsibility and liability of the design professionals for the project.



CEILINGSPUS®

**USG Corporation**  
550 West Adams Street, Chicago, IL 60661-3676 1.800-USG4YOU

## PLANX™ SYSTEM DETAILS

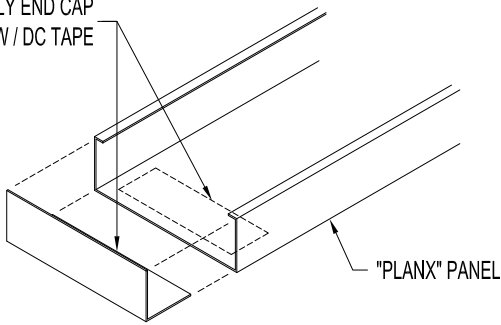
Standard Snap-in Module with 5/8" Filler Strips

SHEET: PLANX-CLOSURE

SCALE: 1:1

ISSUE DATE: 10/8/2021

APPLY END CAP  
W / DC TAPE



**ISO**  
**N.T.S.**

"PLANX" PANEL

#12 PRESTRAIGHTENED GALV. WIRE  
@ 4'-0" O.C. ON MAIN TEE  
3 TWISTS IN 1" MIN. WRAP ANCHOR  
DEVICE ABOVE @ 100 LBS. MINIMUM  
PER HANGING POINT. LATERAL BRACING  
AS PER APPLICABLE BUILDING CODE.  
HANGER WIRE BY INSTALLER

12"  
MAX.

"PLANX" CARRIER @  
SPACING IND.  
ON GRID PLAN

1 1/2" CROSS TEE @  
SPACING IND.  
ON GRID PLAN

END CAP  
FIELD ATTACHED  
W / DC TAPE  
FINISH TO MATCH PANEL

CL-3004 CLIP  
FIELD FASTEN TO  
CROSS TO MAIN  
@ PERIMETER, TYP.

"PLANX" PANEL



**USG Corporation**  
550 West Adams Street, Chicago, IL 60661-3676 1.800-USG4YOU

## PLANX™ SYSTEM DETAILS

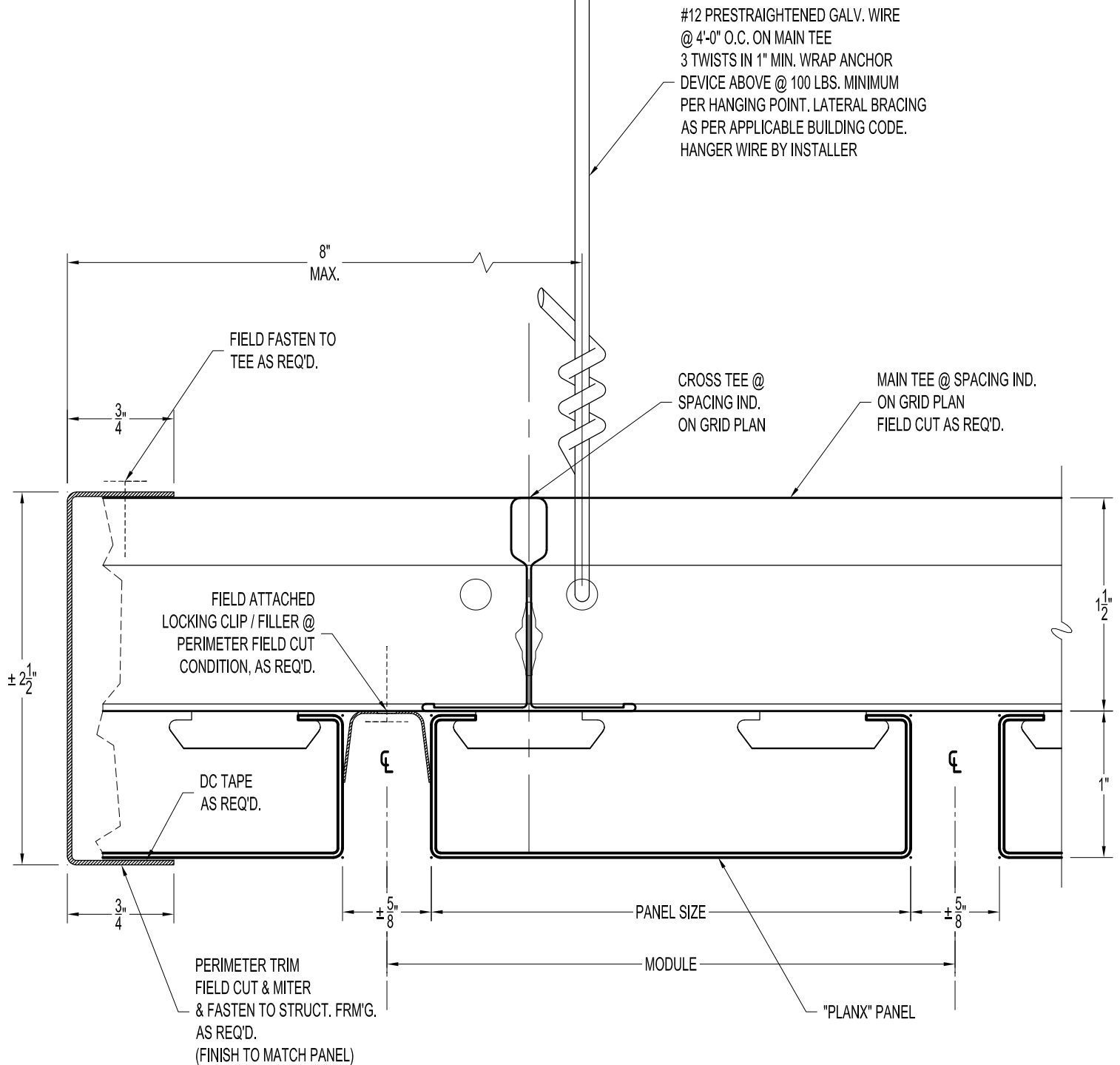
### Perimeter Condition with End Cap

SHEET: PLANX-EC

SCALE: 1:1

ISSUE DATE: 10/8/2021





**USG Corporation**  
550 West Adams Street, Chicago, IL 60661-3676 1.800-USG4YOU

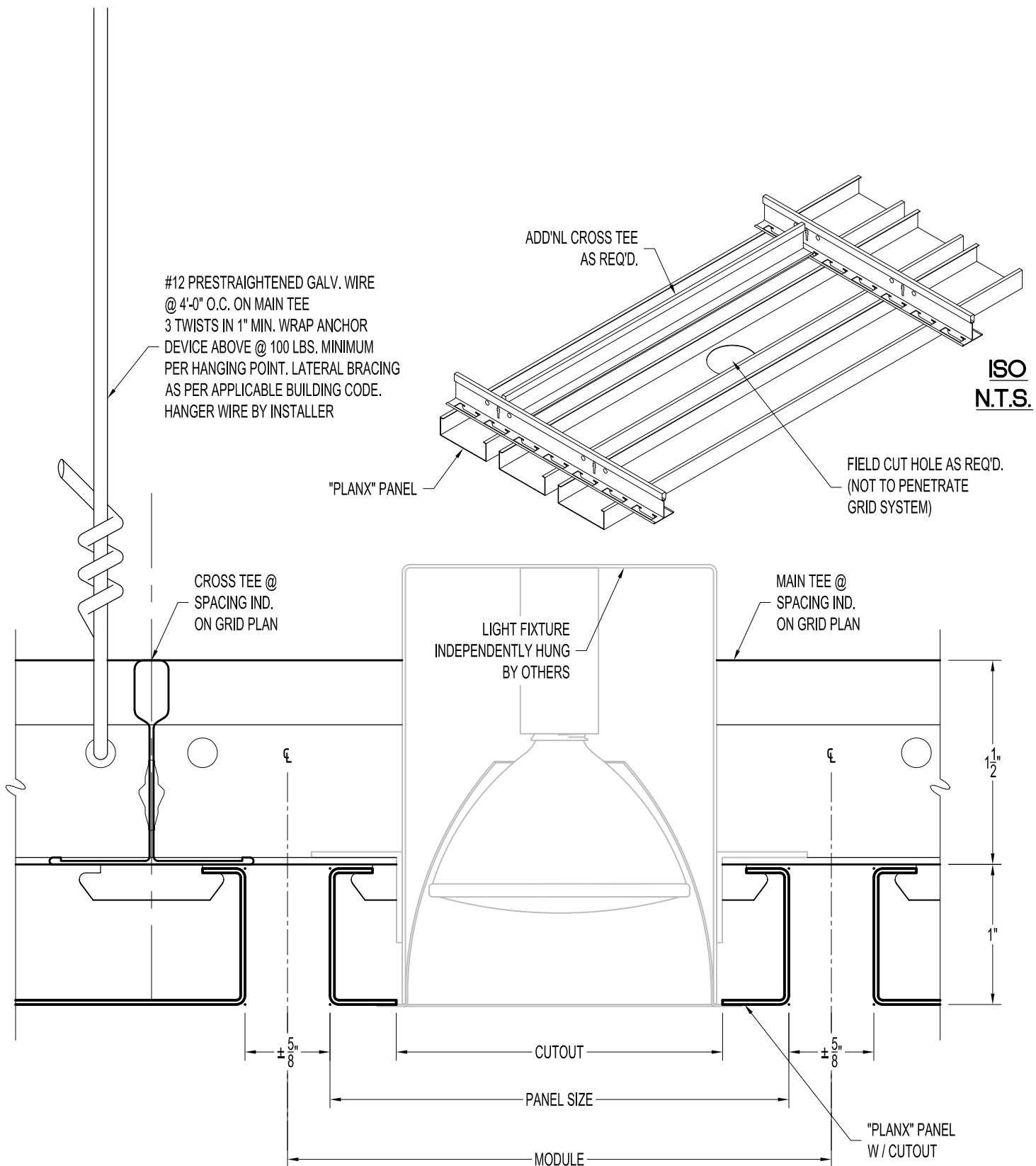
## PLANX™ SYSTEM DETAILS

### Perimeter Field Cut Width C-Channel Trim

SHEET: PLANX-FLT2

SCALE: 1:1

ISSUE DATE: 10/8/2021



**USG Corporation**  
550 West Adams Street, Chicago, IL 60661-3676 1.800-USG4YOU

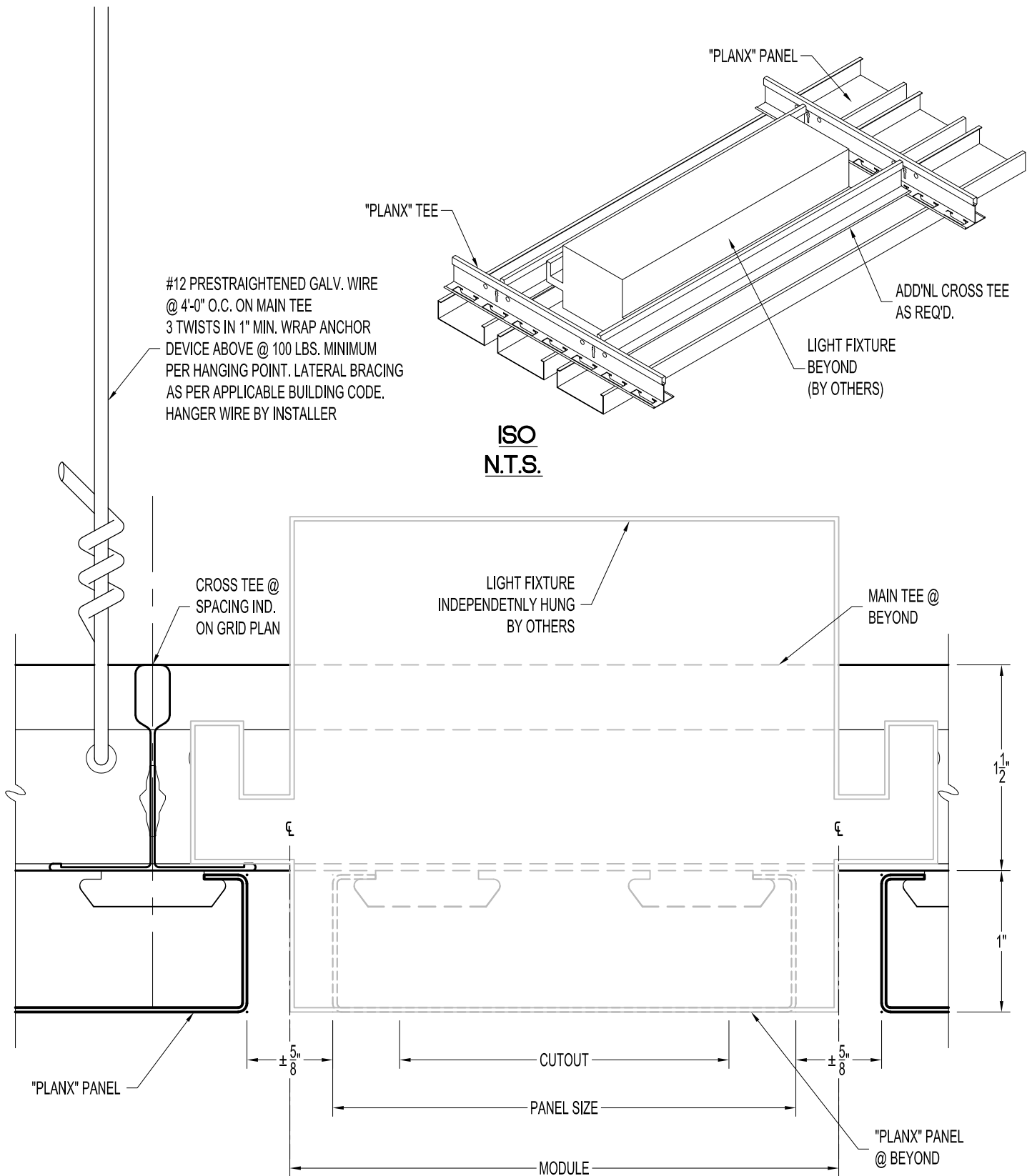
## PLANX™ SYSTEM DETAILS

### Light Fixture Penetration

SHEET: PLANX-LHT1

SCALE: 1:1

ISSUE DATE: 10/8/2021



CEILINGSPUS®

USG Corporation  
550 West Adams Street, Chicago, IL 60661-3676 1.800-USG4YOU

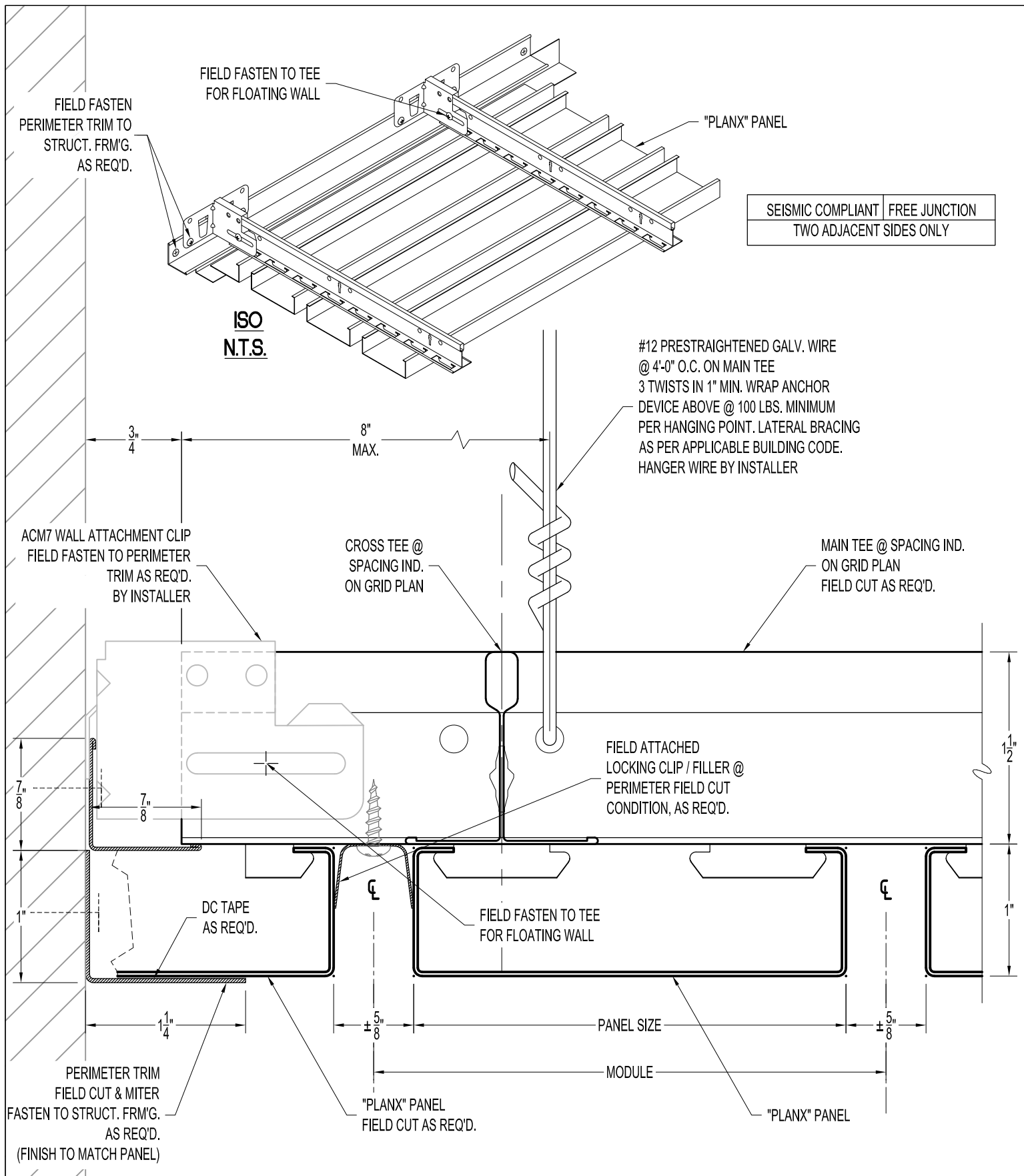
## PLANX™ SYSTEM DETAILS

### Linear Light Fixture Penetration

SHEET: PLANX-LHT2

SCALE: 1:1

ISSUE DATE: 10/8/2021



CEILINGSPUS®

USG Corporation  
550 West Adams Street, Chicago, IL 60661-3676 1.800-USG4YOU

## PLANX™ SYSTEM DETAILS

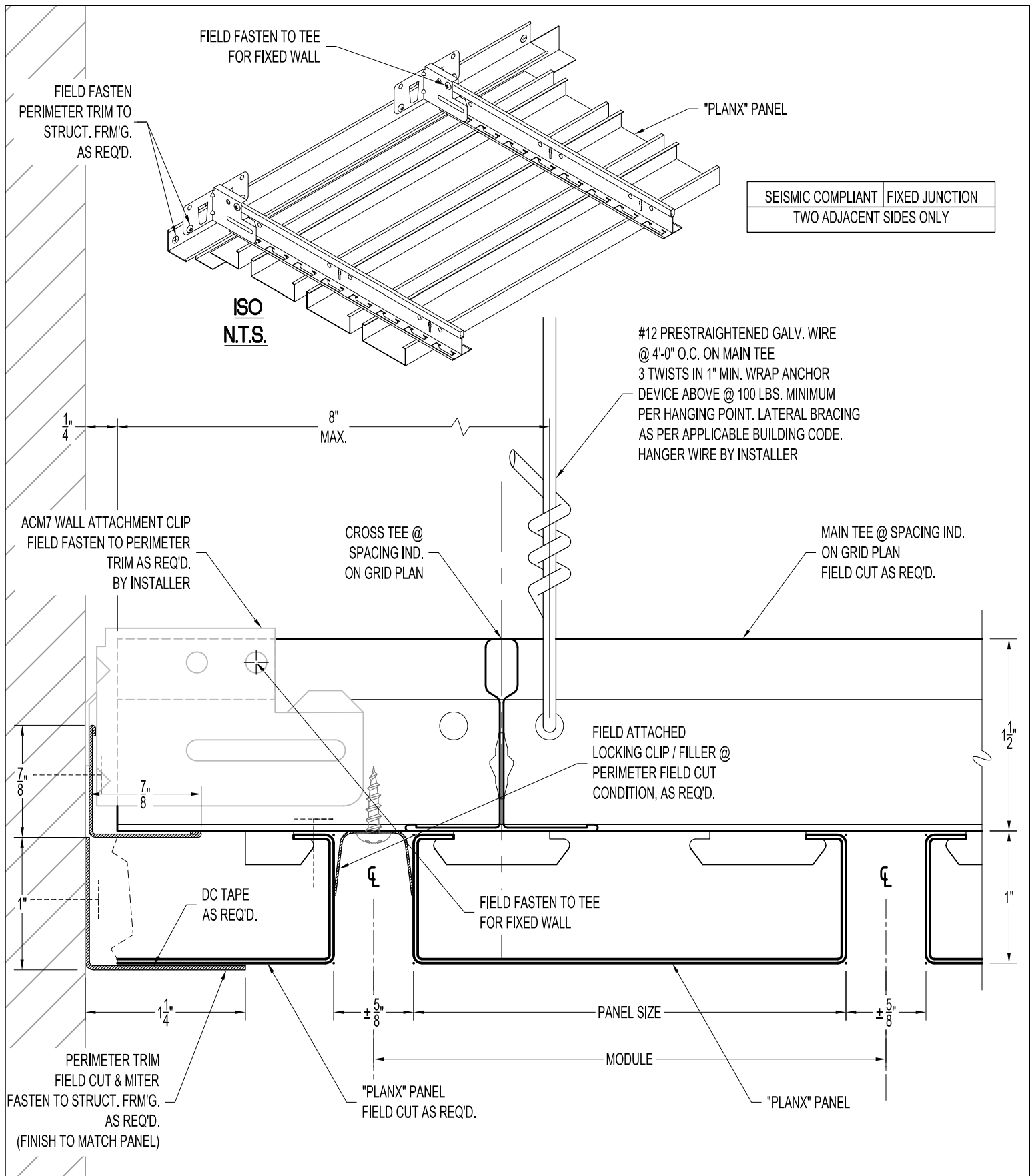
### Perimeter at Wall Field Cut L-Angle Cross Tee

SHEET: PLANX-P1A-SFR

SCALE: 1:1

ISSUE DATE: 10/8/2021





CEILINGSPUS®

USG Corporation  
550 West Adams Street, Chicago, IL 60661-3676 1.800-USG4YOU

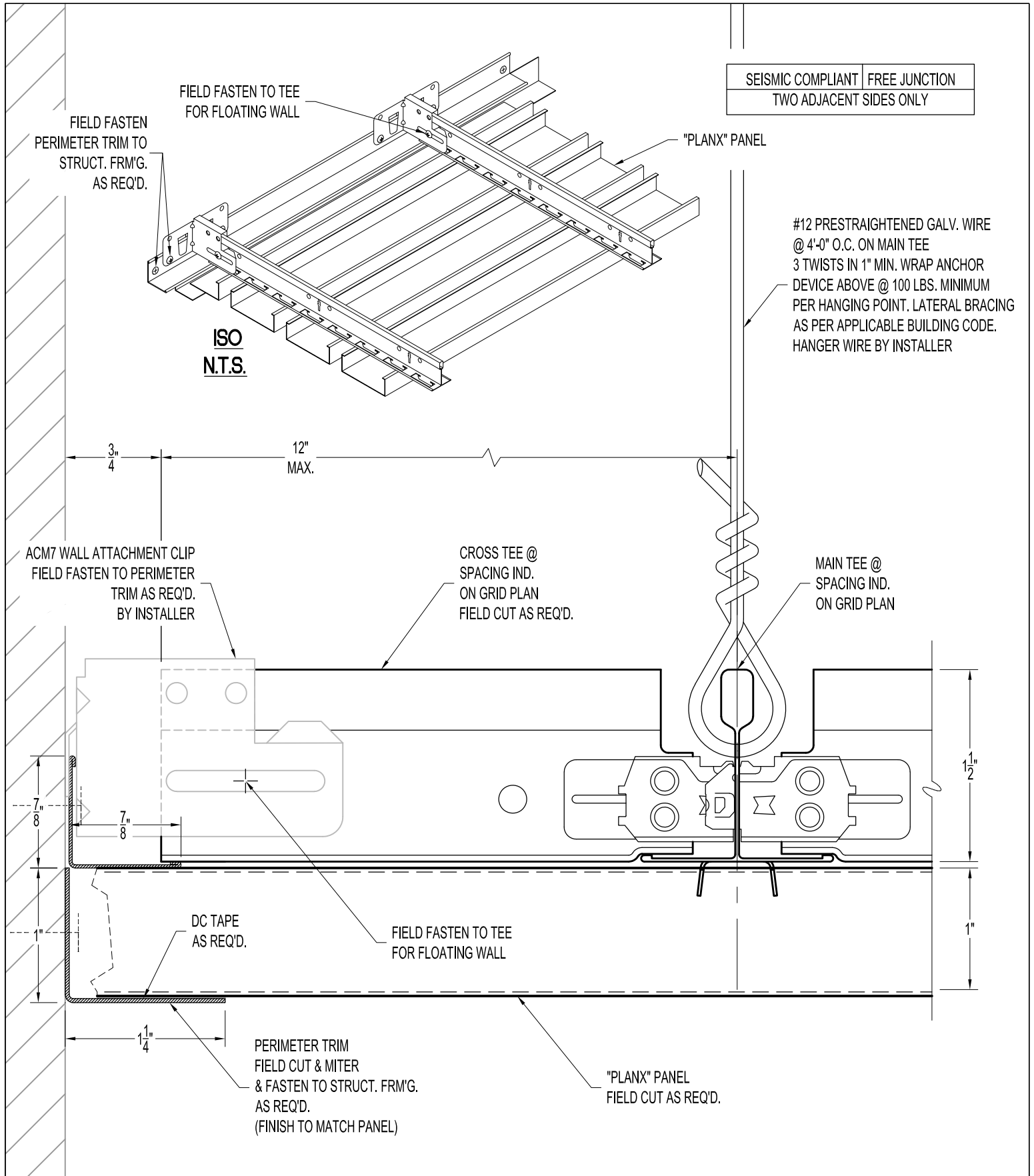
## PLANX™ SYSTEM DETAILS

### Perimeter at Wall Field Cut L-Angle Fixed

SHEET: PLANX-P1A-SFX

SCALE: 1:1

ISSUE DATE: 10/8/2021



CEILINGSPUS®

USG Corporation  
550 West Adams Street, Chicago, IL 60661-3676 1.800-USG4YOU

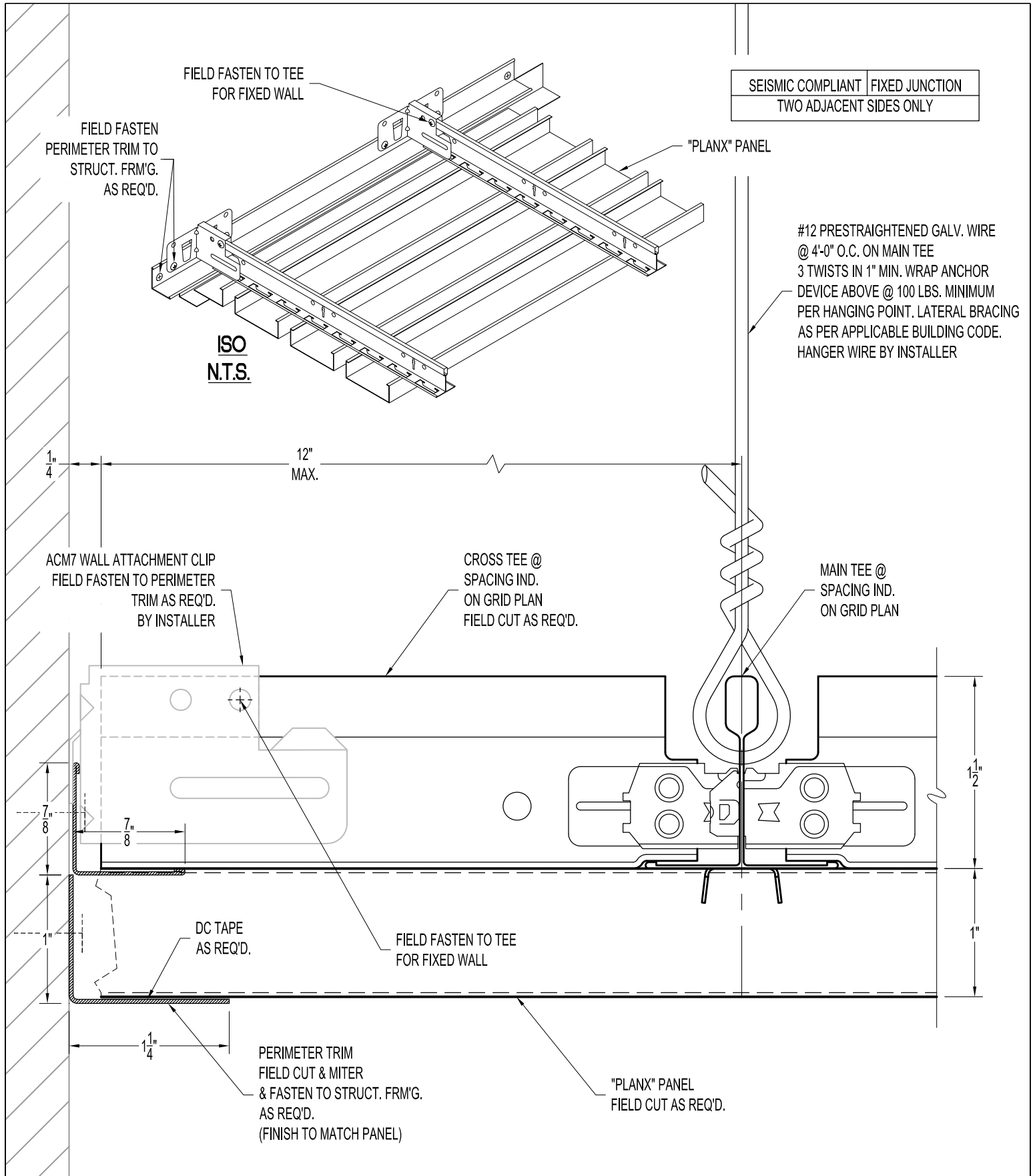
## PLANX™ SYSTEM DETAILS

Perimeter at Wall Field Cut L-Angle Cross Tee Free

SHEET: PLANX-P1B-SFR

SCALE: 1:1

ISSUE DATE: 10/8/2021



CEILINGSPUS®

USG Corporation  
550 West Adams Street, Chicago, IL 60661-3676 1.800-USG4YOU

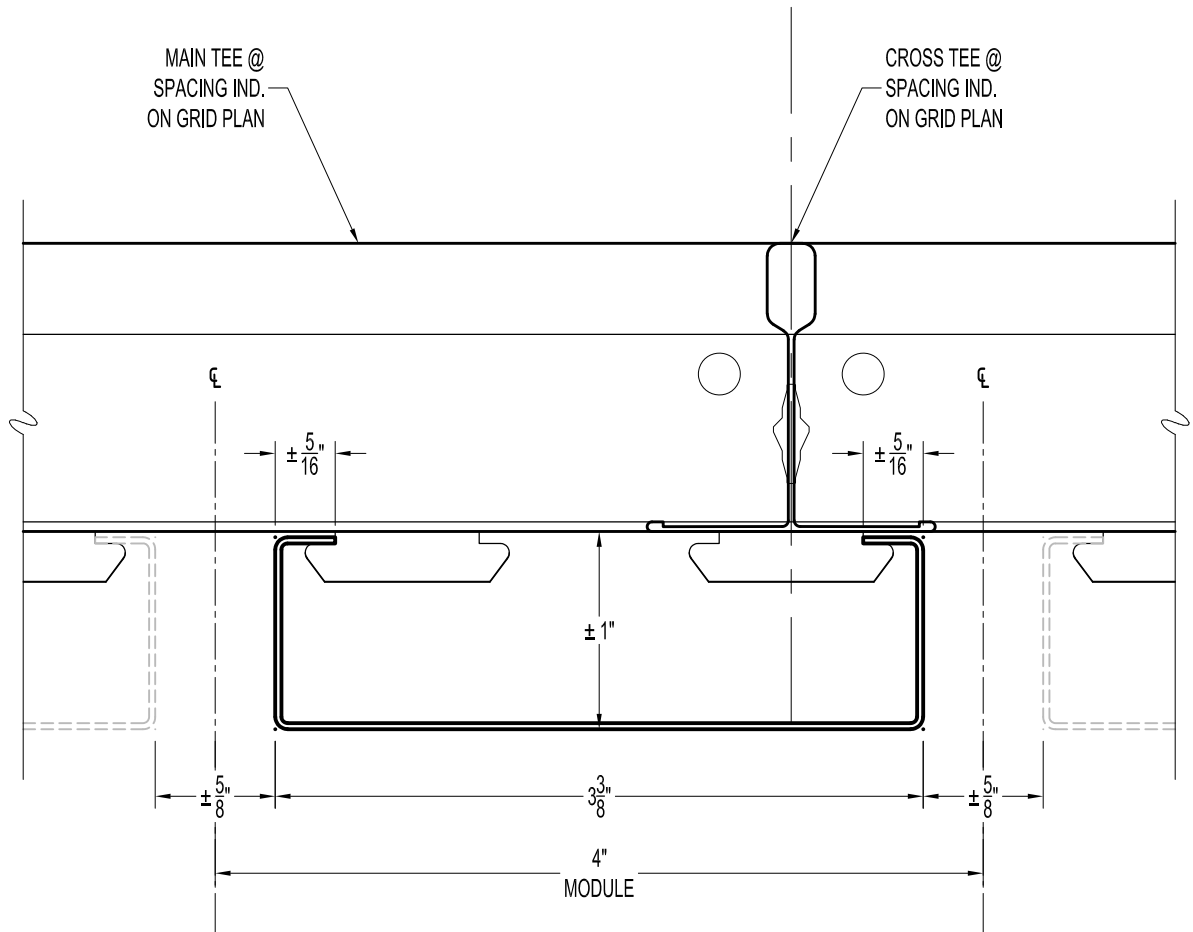
## PLANX™ SYSTEM DETAILS

Perimeter at Wall Field Cut L-Angle Cross Tee Fixed

SHEET: PLANX-P1B-SFX

SCALE: 1:1

ISSUE DATE: 10/8/2021



**USG Corporation**  
550 West Adams Street, Chicago, IL 60661-3676 1.800-USG4YOU

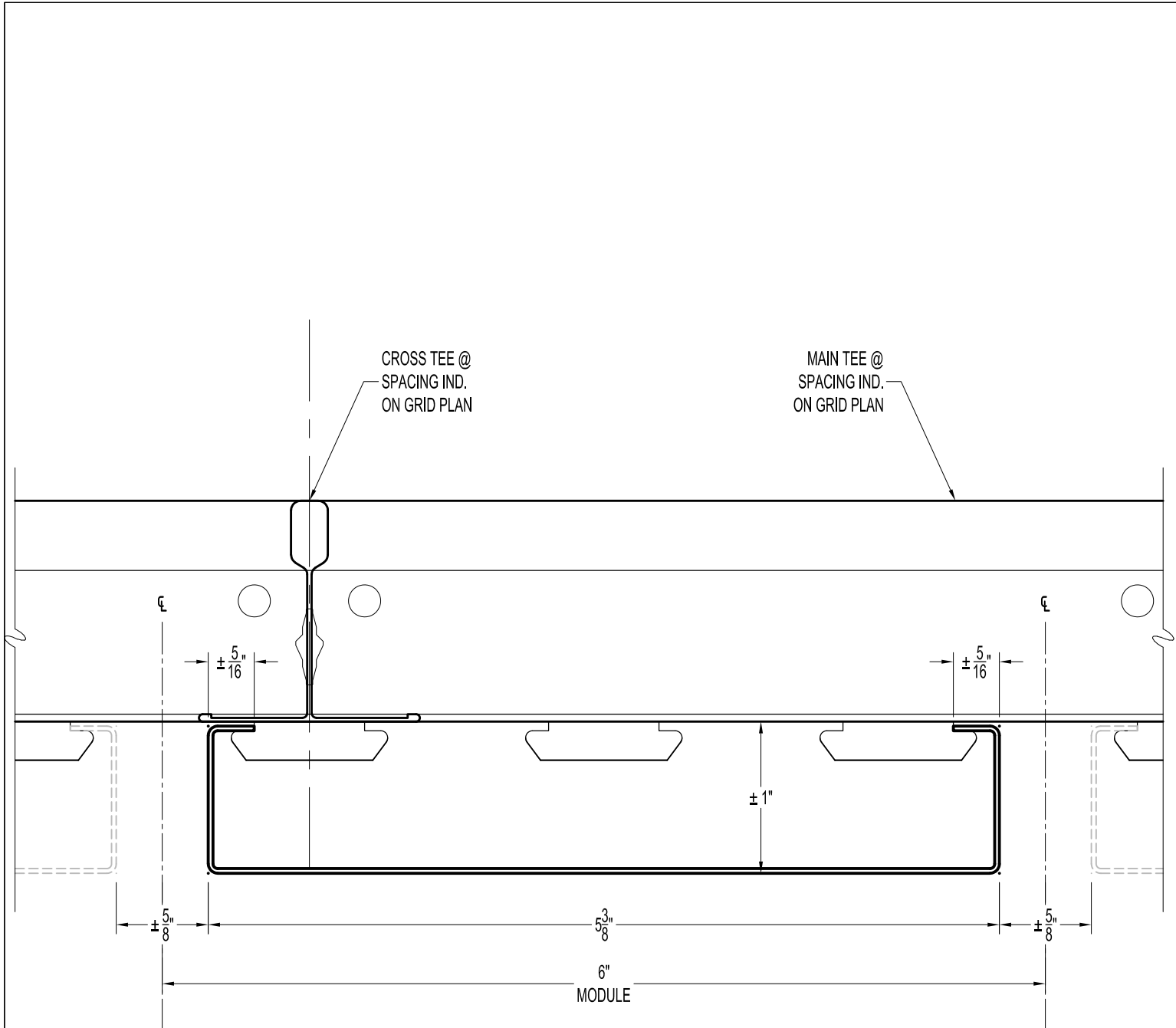
## PLANX™ SYSTEM DETAILS

### Standard 4" Module

SHEET: PLANX-PNL1

SCALE: 1:1

ISSUE DATE: 10/8/2021



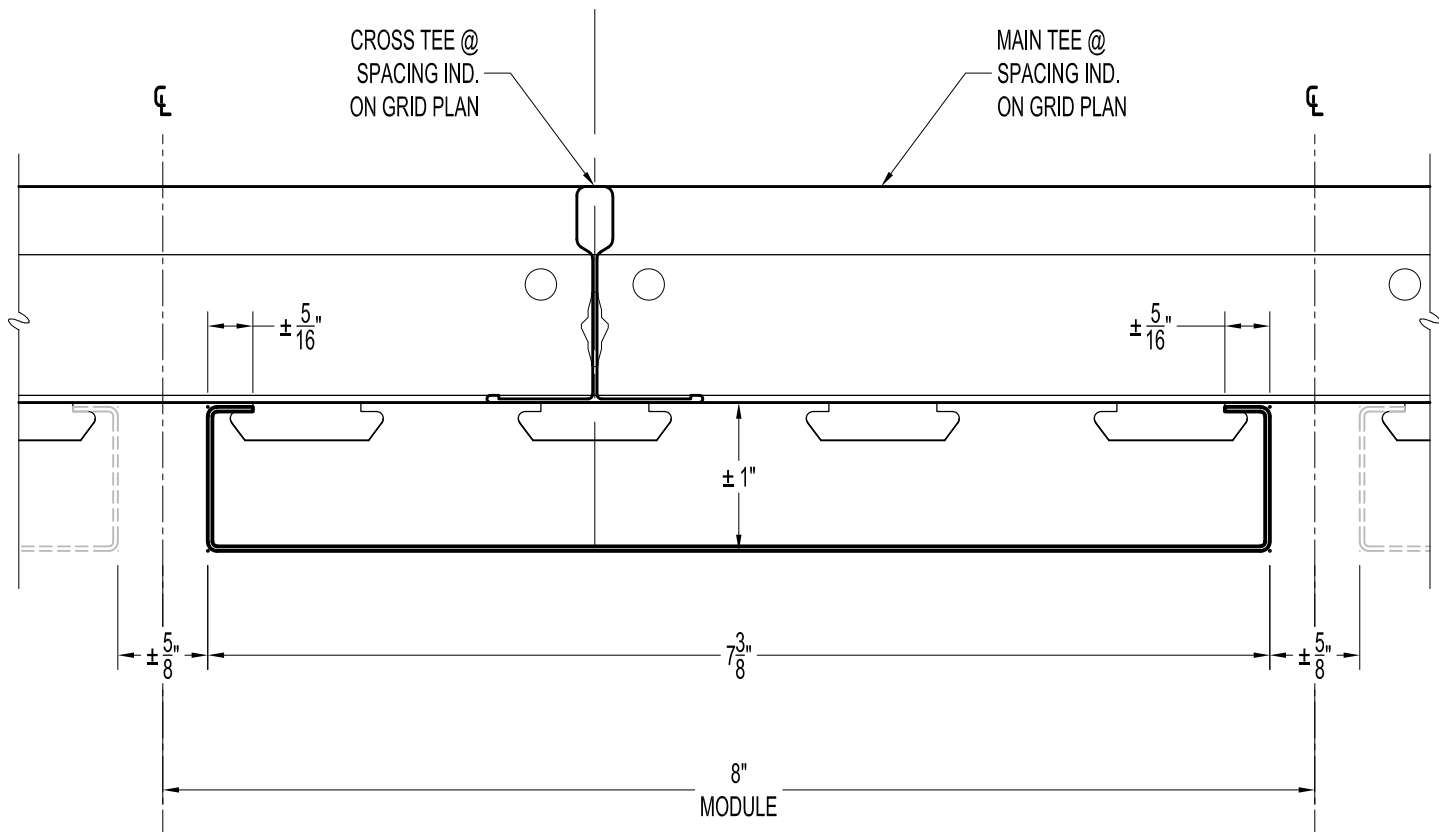
**USG Corporation**  
550 West Adams Street, Chicago, IL 60661-3676 1.800-USG4YOU

PLANX™ SYSTEM DETAILS  
Standard 6" Module

SHEET: PLANX-PNL2

SCALE: 1:1

ISSUE DATE: 10/8/2021



CEILINGSPUS®

**USG Corporation**  
550 West Adams Street, Chicago, IL 60661-3676 1.800-USG4YOU

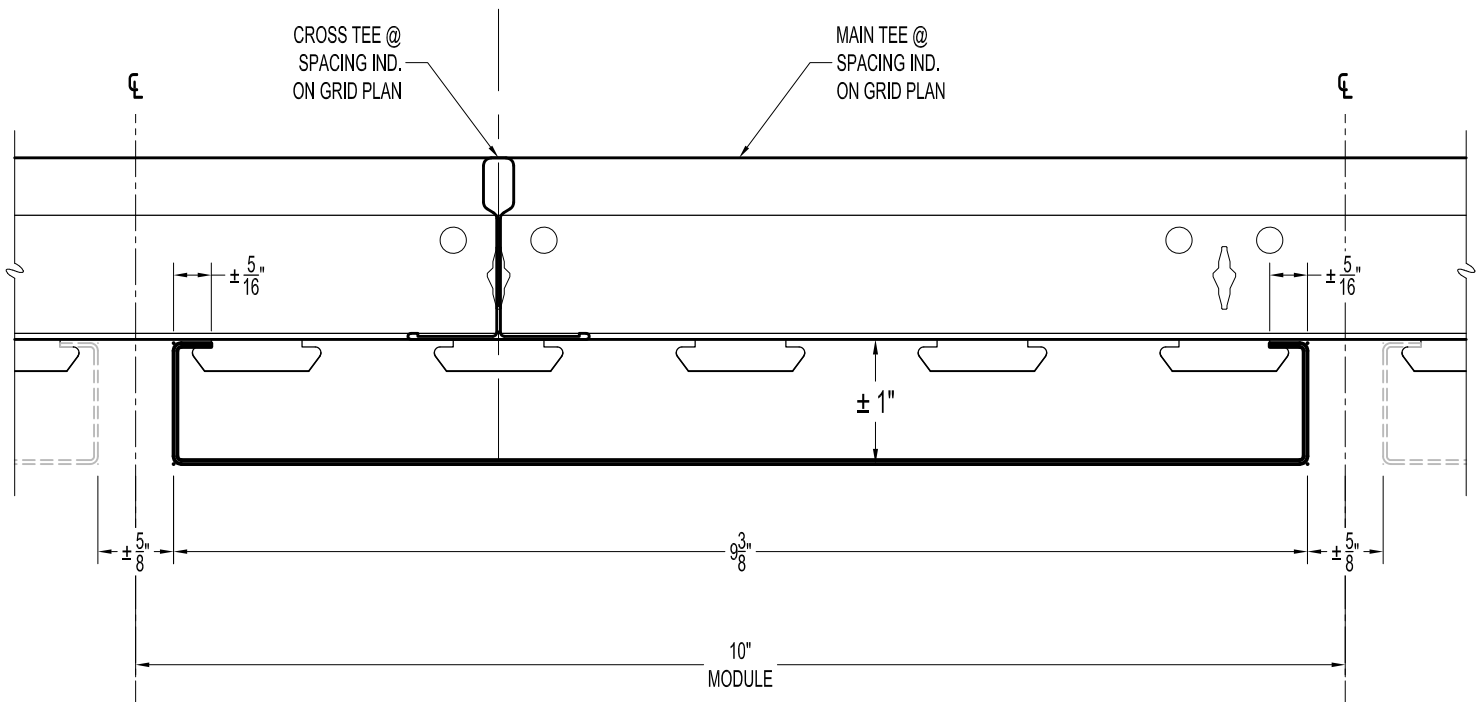
## PLANX™ SYSTEM DETAILS

### Standard 8" Module

SHEET: PLANX-PNL3

SCALE: N.T.S.

ISSUE DATE: 10/8/2021



**USG Corporation**  
550 West Adams Street, Chicago, IL 60661-3676 1.800-USG4YOU

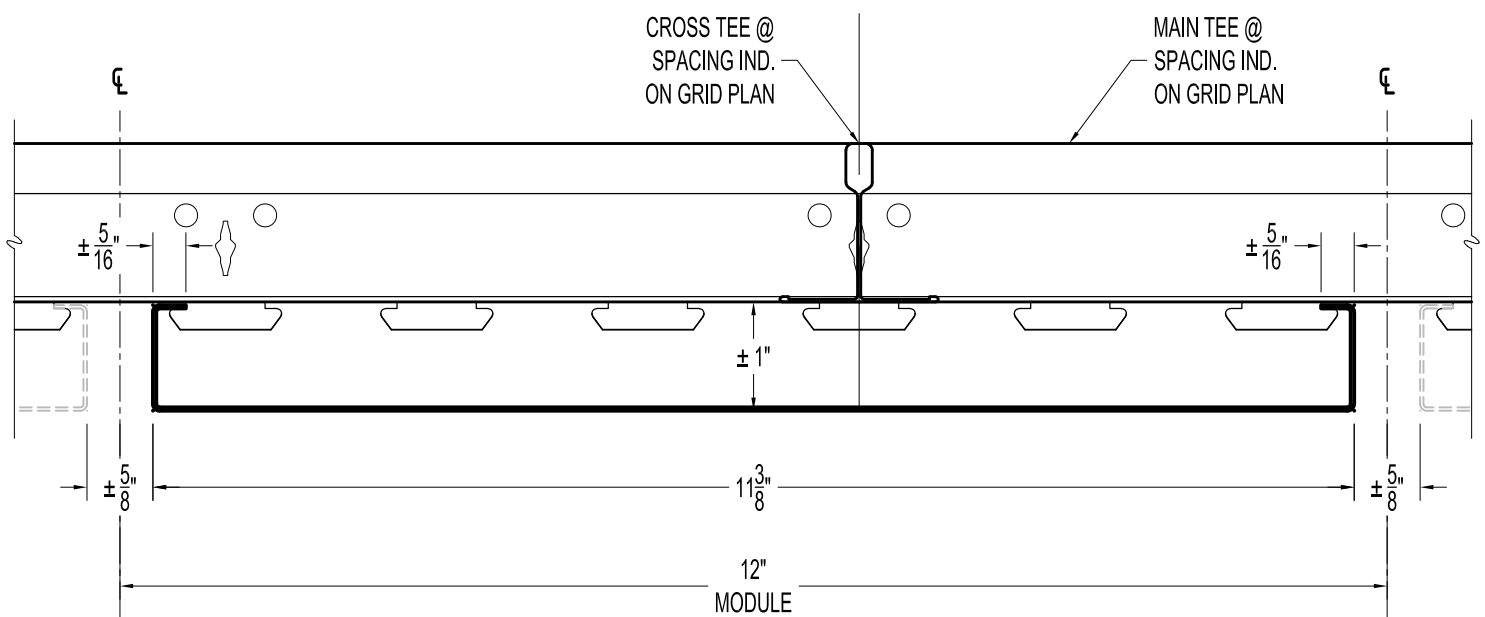
## PLANX™ SYSTEM DETAILS

### Standard 10" Module

SHEET: PLANX-PNL4

SCALE: N.T.S.

ISSUE DATE: 10/8/2021



USG Corporation  
550 West Adams Street, Chicago, IL 60661-3676 1.800-USG4YOU

## PLANX™ SYSTEM DETAILS

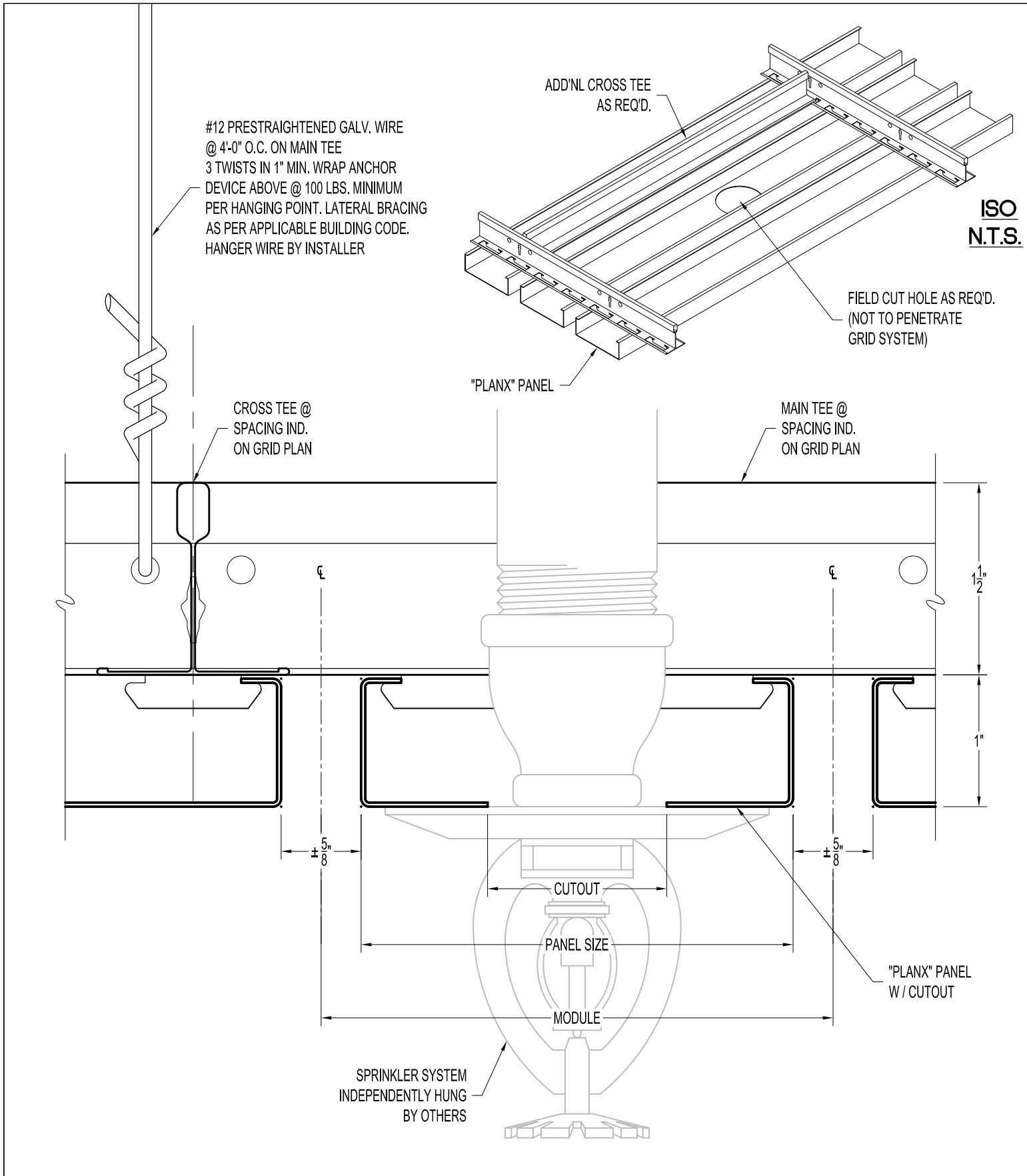
### Standard 12" Module

SHEET: PLANX-PNL5

SCALE: N.T.S.

ISSUE DATE: 10/8/2021





CEILINGSPUS®

**USG Corporation**  
550 West Adams Street, Chicago, IL 60661-3676 1.800-USG4YOU

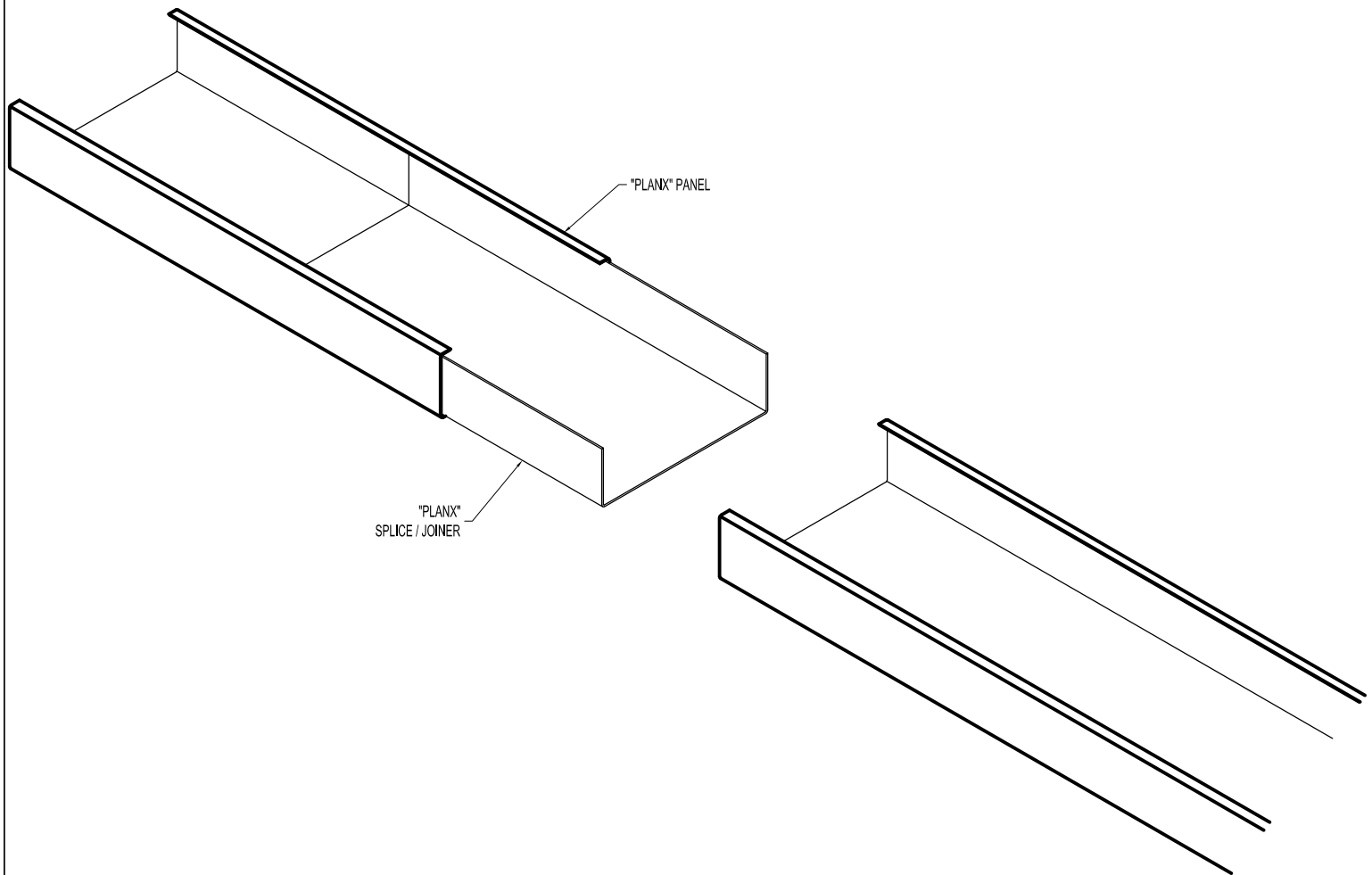
## PLANX™ SYSTEM DETAILS

### Sprinkler Penetration

SHEET: PLANX-SPKR

SCALE: 1:1

ISSUE DATE: 10/8/2021



CEILINGS PLUS®

**USG Corporation**  
550 West Adams Street, Chicago, IL 60661-3676 1.800-USG4YOU

## PLANX™ SYSTEM DETAILS

### Planx Panel Splice

SHEET: PLANX-SPLICE

SCALE: N.T.S.

ISSUE DATE: 10/8/2021