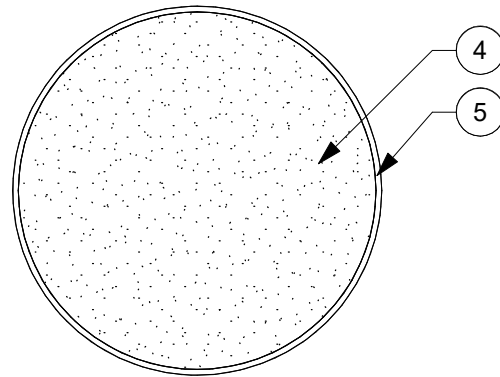


SECTION



PLAN

DETAIL NOTES - THROUGH SLAB PENETRATIONS - J2134 R1

1	5/8" THICK USG SHEETROCK® BRAND FIRECODE® X PANELS
2	Z-CLIPS
3	MINERAL WOOL
4	USG SHEETROCK® BRAND FIRECODE® COMPOUND, 1" [25] MIN. THICKNESS
5	OPTIONAL METALLIC SLEEVE
6	FLOOR ASSEMBLY
7	USG SHEETROCK® BRAND ACOUSTICAL OR SMOKE-SOUND SEALANT, MIN. THICKNESS PER UL C-AJ-1020
8	THROUGH PENETRATION
9	2" THICK MINERAL WOOL, COVERING CURTAIN WALL CONNECTIONS
10	EXTERIOR WALL SPANDREL PANEL (HEAT STENGHTENED GLASS CW-S-2001 OR ALUMINUM PANELS CW-S-2002)
11	SPANDREL PANEL SUPPORT
12	2" THICK FOIL-FACED OR UNFACED MINERAL WOOL, PINNED TO SPANDREL ANGLES
13	5/8" USG SHEETROCK® BRAND GLASS-MAT OR USG DUROCK® BRAND CEMENT BOARD PANELS
14	EXTERIOR WALL SYSTEM
15	3" THICK FOIL-FACED THERMAFIBER FIRESpan INSULATION, FRICTION FIT
16	STEEL STRUT
17	MIN. 3 5/8" 20-GAUGE STEEL STUDS

SYSTEM NOTES:

F-RATING: 2-HR & 3-HR
T-RATING: 0-HR & 1-HR

REFERENCE CURRENT UL JOINT SYSTEMS DIRECTORY FOR ALL GENERAL INFORMATION, MATERIAL DESIGNATIONS, THICKNESS AND FIRE RATINGS.



USG Corporation
550 West Adams Street, Chicago, IL 60661
T. 800-USG4YOU www.USG.com

SYSTEM NO. C-A-J-0032

THROUGH SLAB PENETRATION DETAILS - USG J2134 R1

ISSUE RECORD:
11/09/21

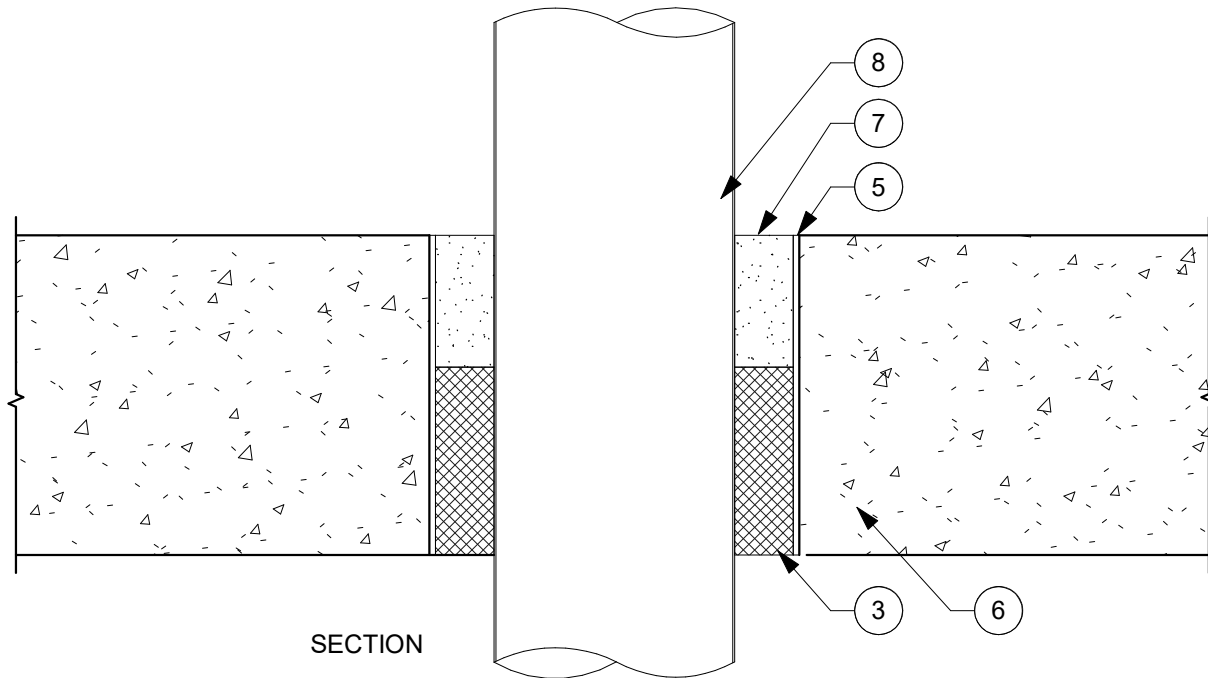
ISSUE: DATE:

SHEET INFORMATION:
SCALE: 3" = 1'-0"

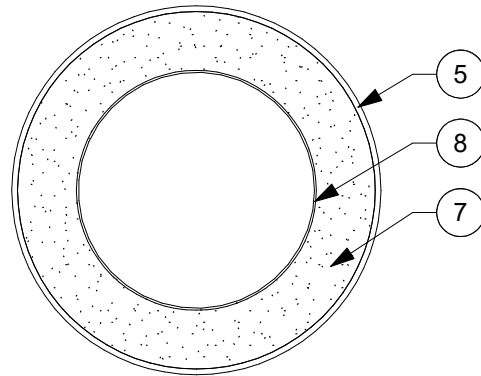
TSP-01

SYSTEM NO. C-A-J-0032

DISCLAIMER: THE USG PRODUCT DETAILS CONTAINED HEREIN ARE INTENDED FOR USE AS PRODUCT REFERENCE MATERIAL BY ARCHITECTS, ENGINEERS, OTHER DESIGN PROFESSIONALS, CONTRACTORS, BUILDING CODE OFFICIALS, OR OTHER COMPETENT CONSTRUCTION INDUSTRY TRADE PROFESSIONALS HAVING AN INTEREST IN THE SELECTION, SPECIFICATION AND USE OF PRODUCTS MANUFACTURED BY THE SUBSIDIARIES OF USG CORPORATION. THE DRAWINGS ARE INTENDED SOLELY AS TECHNICAL SUPPORT INCIDENT TO THE SALE AND USE OF USG PRODUCTS AND NOT INTENDED TO BE A SUBSTITUTE FOR THE DESIGN REVIEW AND APPROVAL OF THE LICENSED DESIGN PROFESSIONALS FOR THE PROJECT. THESE MATERIALS MAY BE PRINTED AND/OR TRANSFERRED ELECTRONICALLY SOLELY AS NEEDED BY THE USER, BECAUSE CAD ELECTRONIC FILES AND BIM (BUILDING INFORMATION MODELING) FILES CAN BE MODIFIED BY OTHER PARTIES, WITHOUT NOTICE OR INDICATION OF SUCH MODIFICATIONS, MODIFICATION OF USG PRODUCT CAD AND BIM DRAWINGS IS THE SOLE RESPONSIBILITY OF THE DESIGN PROFESSIONAL. ©2021 USG CORPORATION.



SECTION



PLAN

DETAIL NOTES - THROUGH SLAB PENETRATIONS - J2134 R1

1	5/8" THICK USG SHEETROCK® BRAND FIRECODE® X PANELS
2	Z-CLIPS
3	MINERAL WOOL
4	USG SHEETROCK® BRAND FIRECODE® COMPOUND, 1" [25] MIN. THICKNESS
5	OPTIONAL METALLIC SLEEVE
6	FLOOR ASSEMBLY
7	USG SHEETROCK® BRAND ACOUSTICAL OR SMOKE-SOUND SEALANT, MIN. THICKNESS PER UL C-AJ-1020
8	THROUGH PENETRATION
9	2" THICK MINERAL WOOL, COVERING CURTAIN WALL CONNECTIONS
10	EXTERIOR WALL SPANDREL PANEL (HEAT STENGHTENED GLASS CW-S-2001 OR ALUMINUM PANELS CW-S-2002)
11	SPANDREL PANEL SUPPORT
12	2" THICK FOIL-FACED OR UNFACED MINERAL WOOL, PINNED TO SPANDREL ANGLES
13	5/8" USG SHEETROCK® BRAND GLASS-MAT OR USG DUROCK® BRAND CEMENT BOARD PANELS
14	EXTERIOR WALL SYSTEM
15	3" THICK FOIL-FACED THERMAFIBER FIRESpan INSULATION, FRICTION FIT
16	STEEL STRUT
17	MIN. 3 5/8" 20-GAUGE STEEL STUDS

SYSTEM NOTES:

F-RATING: 3-HR

T-RATING: 1-HR

REFERENCE CURRENT UL JOINT SYSTEMS DIRECTORY FOR ALL GENERAL INFORMATION, MATERIAL DESIGNATIONS, THICKNESS AND FIRE RATINGS.



USG Corporation
550 West Adams Street, Chicago, IL 60661
T. 800-USG4YOU www.USG.com

SYSTEM NO. C-A-J-1020

THROUGH SLAB PENETRATION DETAILS - USG J2134 R1

ISSUE RECORD:
11/08/21

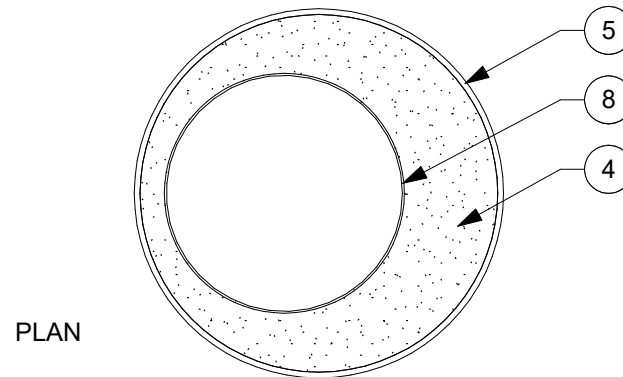
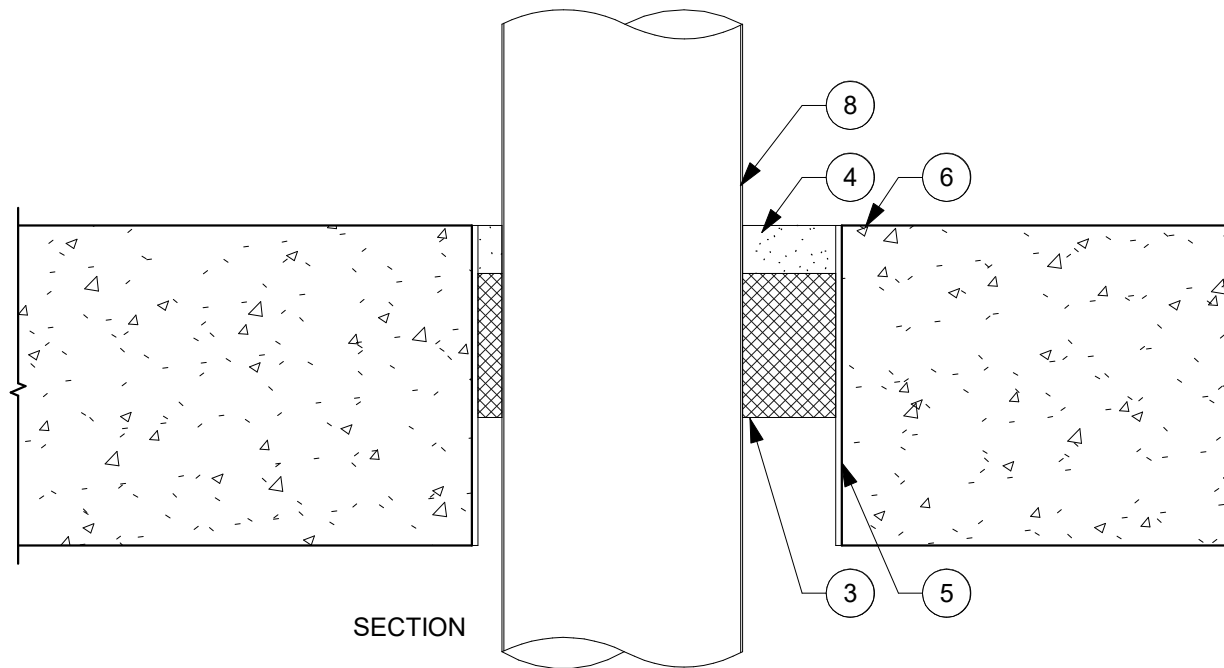
ISSUE: DATE:

SHEET INFORMATION:
SCALE: 3" = 1'-0"

TSP-02

SYSTEM NO. C-A-J-1020

DISCLAIMER: THE USG PRODUCT DETAILS CONTAINED HEREIN ARE INTENDED FOR USE AS PRODUCT REFERENCE MATERIAL BY ARCHITECTS, ENGINEERS, OTHER DESIGN PROFESSIONALS, CONTRACTORS, BUILDING CODE OFFICIALS, OR OTHER COMPETENT CONSTRUCTION INDUSTRY TRADE PROFESSIONALS HAVING AN INTEREST IN THE SELECTION, SPECIFICATION AND USE OF PRODUCTS MANUFACTURED BY THE SUBSIDIARIES OF USG CORPORATION. THE DRAWINGS ARE INTENDED SOLELY AS TECHNICAL SUPPORT INCIDENT TO THE SALE AND USE OF USG PRODUCTS AND NOT INTENDED TO BE A SUBSTITUTE FOR THE DESIGN REVIEW AND APPROVAL OF THE LICENSED DESIGN PROFESSIONALS FOR THE PROJECT. THESE MATERIALS MAY BE PRINTED AND/OR TRANSFERRED ELECTRONICALLY SOLELY AS NEEDED BY THE USER, BECAUSE CAD ELECTRONIC FILES AND BIM (BUILDING INFORMATION MODELING) FILES CAN BE MODIFIED BY OTHER PARTIES, WITHOUT NOTICE OR INDICATION OF SUCH MODIFICATIONS, MODIFICATION OF USG PRODUCT CAD AND BIM DRAWINGS IS THE SOLE RESPONSIBILITY OF THE DESIGN PROFESSIONAL. ©2021 USG CORPORATION.



DETAIL NOTES - THROUGH SLAB PENETRATIONS - J2134 R1

1	5/8" THICK USG SHEETROCK® BRAND FIRECODE® X PANELS
2	Z-CLIPS
3	MINERAL WOOL
4	USG SHEETROCK® BRAND FIRECODE® COMPOUND, 1" [25] MIN. THICKNESS
5	OPTIONAL METALLIC SLEEVE
6	FLOOR ASSEMBLY
7	USG SHEETROCK® BRAND ACOUSTICAL OR SMOKE-SOUND SEALANT, MIN. THICKNESS PER UL C-AJ-1020
8	THROUGH PENETRATION
9	2" THICK MINERAL WOOL, COVERING CURTAIN WALL CONNECTIONS
10	EXTERIOR WALL SPANDREL PANEL (HEAT STENGHTENED GLASS CW-S-2001 OR ALUMINUM PANELS CW-S-2002)
11	SPANDREL PANEL SUPPORT
12	2" THICK FOIL-FACED OR UNFACED MINERAL WOOL, PINNED TO SPANDREL ANGLES
13	5/8" USG SHEETROCK® BRAND GLASS-MAT OR USG DUROCK® BRAND CEMENT BOARD PANELS
14	EXTERIOR WALL SYSTEM
15	3" THICK FOIL-FACED THERMAFIBER FIRESpan INSULATION, FRICTION FIT
16	STEEL STRUT
17	MIN. 3 5/8" 20-GAUGE STEEL STUDS

SYSTEM NOTES:

F-RATING: 2-HR & 3-HR
T-RATING: 0-HR

REFERENCE CURRENT UL JOINT SYSTEMS DIRECTORY FOR ALL GENERAL INFORMATION, MATERIAL DESIGNATIONS, THICKNESS AND FIRE RATINGS.



USG Corporation
550 West Adams Street, Chicago, IL 60661
T. 800-USG4YOU www.USG.com

SYSTEM NO. C-A-J-1081

THROUGH SLAB PENETRATION DETAILS - USG J2134 R1

ISSUE RECORD:
11/08/21

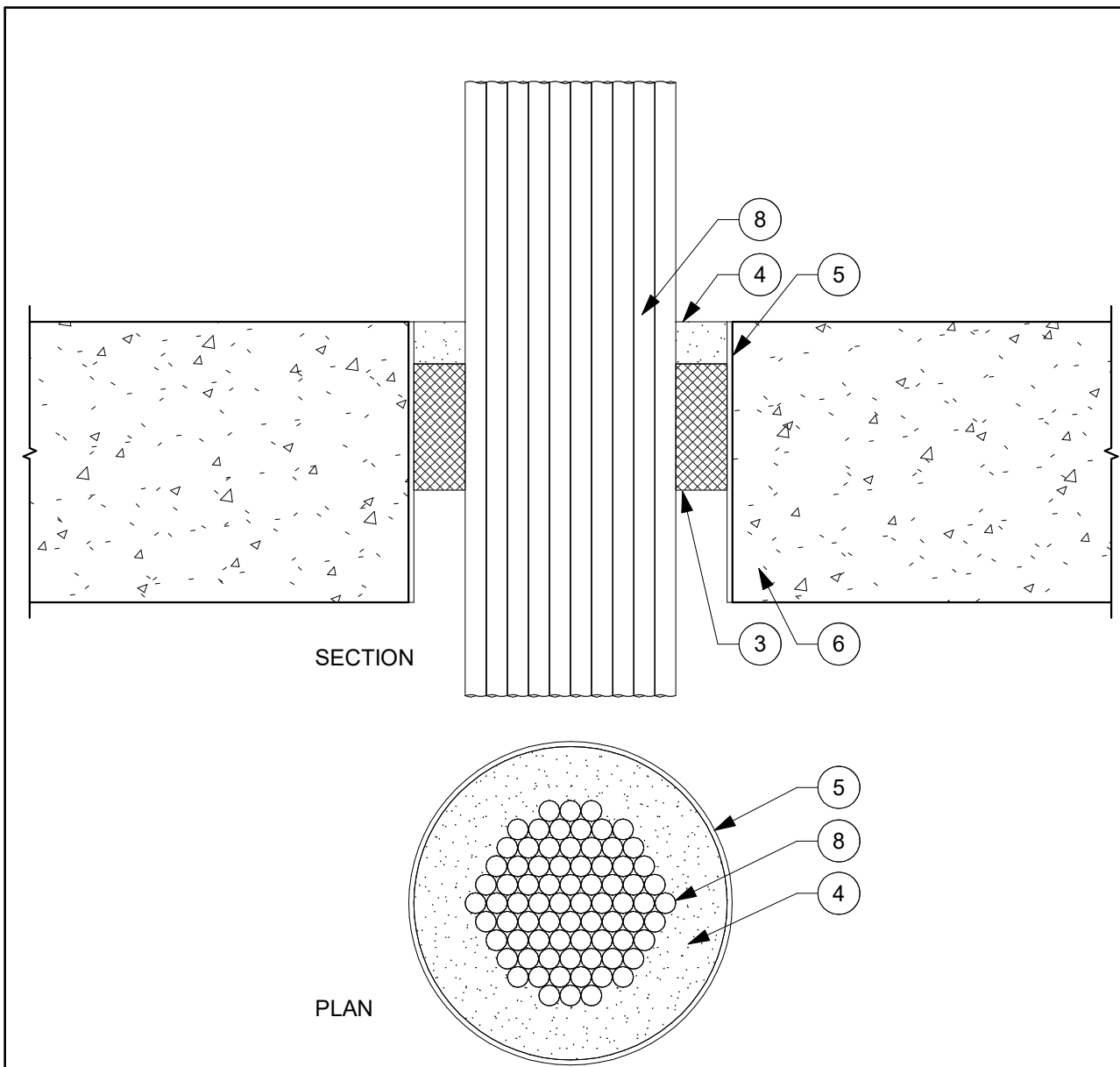
ISSUE: DATE:

SHEET INFORMATION:
SCALE: 3" = 1'-0"

TSP-03

SYSTEM NO. C-A-J-1081

DISCLAIMER: THE USG PRODUCT DETAILS CONTAINED HEREIN ARE INTENDED FOR USE AS PRODUCT REFERENCE MATERIAL BY ARCHITECTS, ENGINEERS, OTHER DESIGN PROFESSIONALS, CONTRACTORS, BUILDING CODE OFFICIALS, OR OTHER COMPETENT CONSTRUCTION INDUSTRY TRADE PROFESSIONALS HAVING AN INTEREST IN THE SELECTION, SPECIFICATION AND USE OF PRODUCTS MANUFACTURED BY THE SUBSIDIARIES OF USG CORPORATION. THE DRAWINGS ARE INTENDED SOLELY AS TECHNICAL SUPPORT INCIDENT TO THE SALE AND USE OF USG PRODUCTS AND NOT INTENDED TO BE A SUBSTITUTE FOR THE DESIGN REVIEW AND APPROVAL OF THE LICENSED DESIGN PROFESSIONALS FOR THE PROJECT. THESE MATERIALS MAY BE PRINTED AND/OR TRANSFERRED ELECTRONICALLY SOLELY AS NEEDED BY THE USER, BECAUSE CAD ELECTRONIC FILES AND BIM (BUILDING INFORMATION MODELING) FILES CAN BE MODIFIED BY OTHER PARTIES, WITHOUT NOTICE OR INDICATION OF SUCH MODIFICATIONS, MODIFICATION OF USG PRODUCT CAD AND BIM DRAWINGS IS THE SOLE RESPONSIBILITY OF THE DESIGN PROFESSIONAL. ©2021 USG CORPORATION.



DETAIL NOTES - THROUGH SLAB PENETRATIONS - J2134 R1

1	5/8" THICK USG SHEETROCK® BRAND FIRECODE® X PANELS
2	Z-CLIPS
3	MINERAL WOOL
4	USG SHEETROCK® BRAND FIRECODE® COMPOUND, 1" [25] MIN. THICKNESS
5	OPTIONAL METALLIC SLEEVE
6	FLOOR ASSEMBLY
7	USG SHEETROCK® BRAND ACOUSTICAL OR SMOKE-SOUND SEALANT, MIN. THICKNESS PER UL C-AJ-1020
8	THROUGH PENETRATION
9	2" THICK MINERAL WOOL, COVERING CURTAIN WALL CONNECTIONS
10	EXTERIOR WALL SPANDREL PANEL (HEAT STENGHTENED GLASS CW-S-2001 OR ALUMINUM PANELS CW-S-2002)
11	SPANDREL PANEL SUPPORT
12	2" THICK FOIL-FACED OR UNFACED MINERAL WOOL, PINNED TO SPANDREL ANGLES
13	5/8" USG SHEETROCK® BRAND GLASS-MAT OR USG DUROCK® BRAND CEMENT BOARD PANELS
14	EXTERIOR WALL SYSTEM
15	3" THICK FOIL-FACED THERMAFIBER FIRESpan INSULATION, FRICTION FIT
16	STEEL STRUT
17	MIN. 3 5/8" 20-GAUGE STEEL STUDS

SYSTEM NOTES:

F-RATING: 3-HR
T-RATING: 0-HR

REFERENCE CURRENT UL JOINT SYSTEMS DIRECTORY FOR ALL GENERAL INFORMATION, MATERIAL DESIGNATIONS, THICKNESS AND FIRE RATINGS.



USG Corporation
550 West Adams Street, Chicago, IL 60661
T. 800-USG4YOU www.USG.com

SYSTEM NO. C-A-J-3045

THROUGH SLAB PENETRATION DETAILS - USG J2134 R1

ISSUE RECORD:
11/08/21

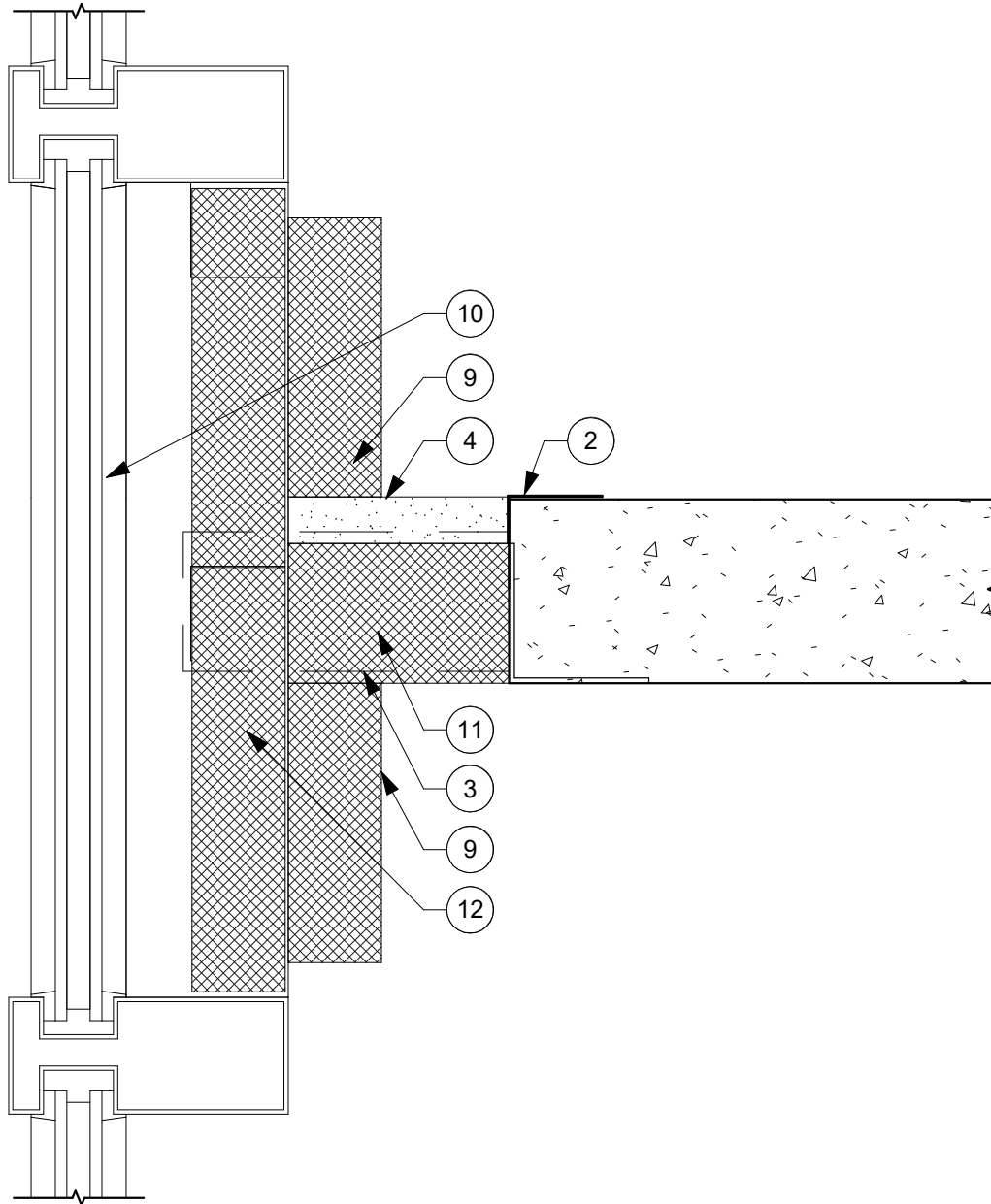
ISSUE: DATE:

SHEET INFORMATION:
SCALE: 3" = 1'-0"

TSP-04

SYSTEM NO. C-A-J-3045

DISCLAIMER: THE USG PRODUCT DETAILS CONTAINED HEREIN ARE INTENDED FOR USE AS PRODUCT REFERENCE MATERIAL BY ARCHITECTS, ENGINEERS, OTHER DESIGN PROFESSIONALS, CONTRACTORS, BUILDING CODE OFFICIALS, OR OTHER COMPETENT CONSTRUCTION INDUSTRY TRADE PROFESSIONALS HAVING AN INTEREST IN THE SELECTION, SPECIFICATION AND USE OF PRODUCTS MANUFACTURED BY THE SUBSIDIARIES OF USG CORPORATION. THE DRAWINGS ARE INTENDED SOLELY AS TECHNICAL SUPPORT INCIDENT TO THE SALE AND USE OF USG PRODUCTS AND NOT INTENDED TO BE A SUBSTITUTE FOR THE DESIGN REVIEW AND APPROVAL OF THE LICENSED DESIGN PROFESSIONALS FOR THE PROJECT. THESE MATERIALS MAY BE PRINTED AND/OR TRANSFERRED ELECTRONICALLY SOLELY AS NEEDED BY THE USER, BECAUSE CAD ELECTRONIC FILES AND BIM (BUILDING INFORMATION MODELING) FILES CAN BE MODIFIED BY OTHER PARTIES, WITHOUT NOTICE OR INDICATION OF SUCH MODIFICATIONS, MODIFICATION OF USG PRODUCT CAD AND BIM DRAWINGS IS THE SOLE RESPONSIBILITY OF THE DESIGN PROFESSIONAL. ©2021 USG CORPORATION.



DETAIL NOTES - THROUGH SLAB PENETRATIONS - J2134 R1

1	5/8" THICK USG SHEETROCK® BRAND FIRECODE® X PANELS
2	Z-CLIPS
3	MINERAL WOOL
4	USG SHEETROCK® BRAND FIRECODE® COMPOUND, 1" [25] MIN. THICKNESS
5	OPTIONAL METALLIC SLEEVE
6	FLOOR ASSEMBLY
7	USG SHEETROCK® BRAND ACOUSTICAL OR SMOKE-SOUND SEALANT, MIN. THICKNESS PER UL C-AJ-1020
8	THROUGH PENETRATION
9	2" THICK MINERAL WOOL, COVERING CURTAIN WALL CONNECTIONS
10	EXTERIOR WALL SPANDREL PANEL (HEAT STENGHTENED GLASS CW-S-2001 OR ALUMINUM PANELS CW-S-2002)
11	SPANDREL PANEL SUPPORT
12	2" THICK FOIL-FACED OR UNFACED MINERAL WOOL, PINNED TO SPANDREL ANGLES
13	5/8" USG SHEETROCK® BRAND GLASS-MAT OR USG DUROCK® BRAND CEMENT BOARD PANELS
14	EXTERIOR WALL SYSTEM
15	3" THICK FOIL-FACED THERMAFIBER FIRESpan INSULATION, FRICTION FIT
16	STEEL STRUT
17	MIN. 3 5/8" 20-GAUGE STEEL STUDS

FIRE CONTAINMENT CURTAIN WALL SYSTEM

REFERENCE CURRENT UL JOINT SYSTEMS DIRECTORY FOR ALL GENERAL INFORMATION, MATERIAL DESIGNATIONS, THICKNESS AND FIRE RATINGS.



USG Corporation
550 West Adams Street, Chicago, IL 60661
T. 800-USG4YOU www.USG.com

SYSTEM NO. CW-S-2001 & CW-S-2002

THROUGH SLAB PENETRATION DETAILS - USG J2134 R1

ISSUE RECORD:
11/08/21

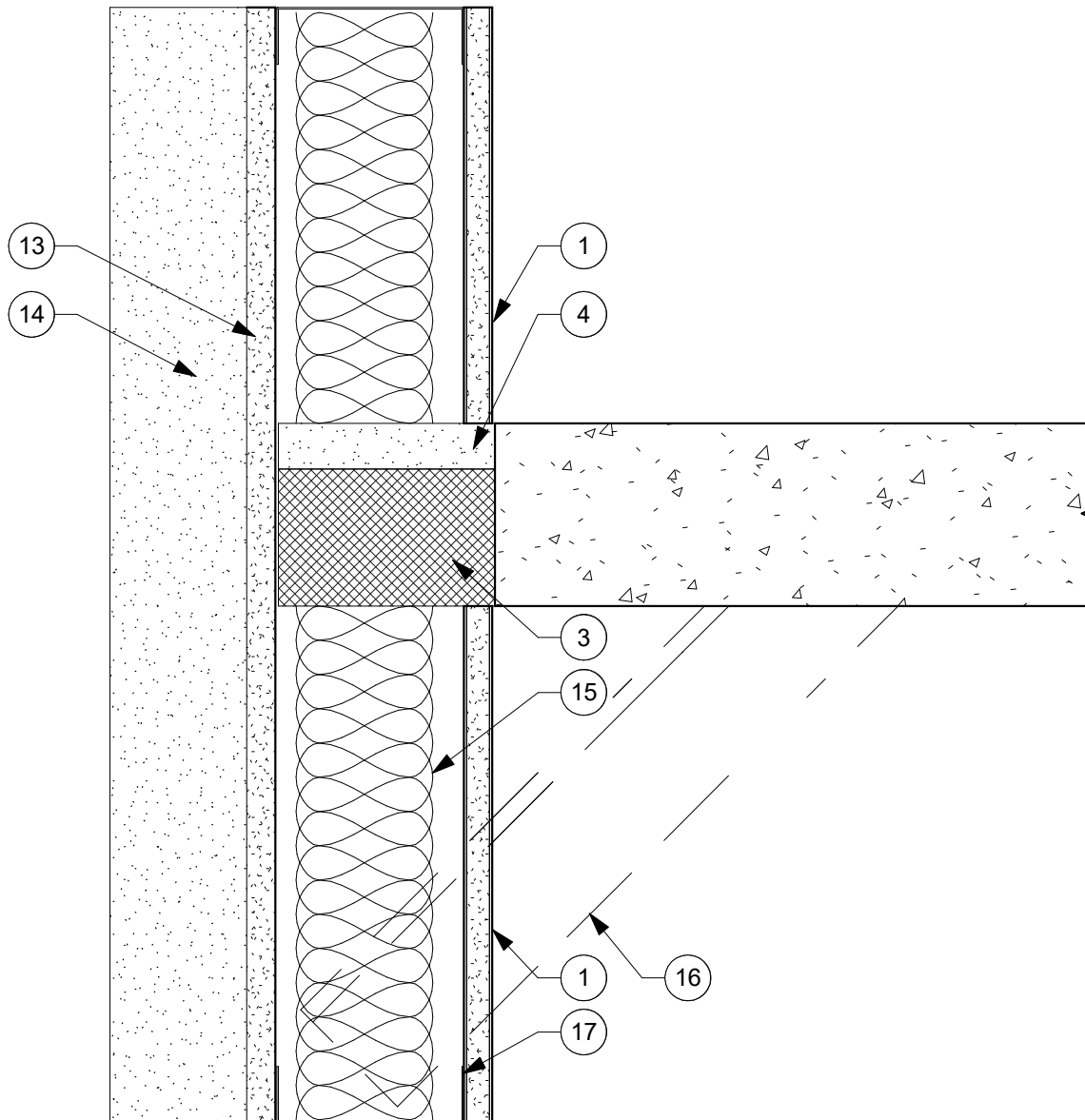
ISSUE: DATE:

SHEET INFORMATION:
SCALE: 3" = 1'-0"

TSP-05

SYSTEM NO. CW-S-2001 & CW-S-2002

DISCLAIMER: THE USG PRODUCT DETAILS CONTAINED HEREIN ARE INTENDED FOR USE AS PRODUCT REFERENCE MATERIAL BY ARCHITECTS, ENGINEERS, OTHER DESIGN PROFESSIONALS, CONTRACTORS, BUILDING CODE OFFICIALS, OR OTHER COMPETENT CONSTRUCTION INDUSTRY TRADE PROFESSIONALS HAVING AN INTEREST IN THE SELECTION, SPECIFICATION AND USE OF PRODUCTS MANUFACTURED BY THE SUBSIDIARIES OF USG CORPORATION. THE DRAWINGS ARE INTENDED SOLELY AS TECHNICAL SUPPORT INCIDENT TO THE SALE AND USE OF USG PRODUCTS AND NOT INTENDED TO BE A SUBSTITUTE FOR THE DESIGN REVIEW AND APPROVAL OF THE LICENSED DESIGN PROFESSIONALS FOR THE PROJECT. THESE MATERIALS MAY BE PRINTED AND/OR TRANSFERRED ELECTRONICALLY SOLELY AS NEEDED BY THE USER, BECAUSE CAD ELECTRONIC FILES AND BIM (BUILDING INFORMATION MODELING) FILES CAN BE MODIFIED BY OTHER PARTIES, WITHOUT NOTICE OR INDICATION OF SUCH MODIFICATIONS, MODIFICATION OF USG PRODUCT CAD AND BIM DRAWINGS IS THE SOLE RESPONSIBILITY OF THE DESIGN PROFESSIONAL. ©2021 USG CORPORATION.



DETAIL NOTES - THROUGH SLAB PENETRATIONS - J2134 R1

1	5/8" THICK USG SHEETROCK® BRAND FIRECODE® X PANELS
2	Z-CLIPS
3	MINERAL WOOL
4	USG SHEETROCK® BRAND FIRECODE® COMPOUND, 1" [25] MIN. THICKNESS
5	OPTIONAL METALLIC SLEEVE
6	FLOOR ASSEMBLY
7	USG SHEETROCK® BRAND ACOUSTICAL OR SMOKE-SOUND SEALANT, MIN. THICKNESS PER UL C-AJ-1020
8	THROUGH PENETRATION
9	2" THICK MINERAL WOOL, COVERING CURTAIN WALL CONNECTIONS
10	EXTERIOR WALL SPANDREL PANEL (HEAT STENGHTENED GLASS CW-S-2001 OR ALUMINUM PANELS CW-S-2002)
11	SPANDREL PANEL SUPPORT
12	2" THICK FOIL-FACED OR UNFACED MINERAL WOOL, PINNED TO SPANDREL ANGLES
13	5/8" USG SHEETROCK® BRAND GLASS-MAT OR USG DUROCK® BRAND CEMENT BOARD PANELS
14	EXTERIOR WALL SYSTEM
15	3" THICK FOIL-FACED THERMAFIBER FIRESpan INSULATION, FRICTION FIT
16	STEEL STRUT
17	MIN. 3 5/8" 20-GAUGE STEEL STUDS

FIRE CONTAINMENT CURTAIN WALL SYSTEM

REFERENCE CURRENT UL JOINT SYSTEMS DIRECTORY FOR ALL GENERAL INFORMATION, MATERIAL DESIGNATIONS, THICKNESS AND FIRE RATINGS.



USG Corporation
550 West Adams Street, Chicago, IL 60661
T. 800-USG4YOU www.USG.com

SYSTEM NO. CW-S-1001

THROUGH SLAB PENETRATION DETAILS - USG J2134 R1

ISSUE RECORD:
11/08/21

ISSUE: DATE:

SHEET INFORMATION:
SCALE: 3" = 1'-0"

TSP-06

SYSTEM NO. CW-S-1001

DISCLAIMER: THE USG PRODUCT DETAILS CONTAINED HEREIN ARE INTENDED FOR USE AS PRODUCT REFERENCE MATERIAL BY ARCHITECTS, ENGINEERS, OTHER DESIGN PROFESSIONALS, CONTRACTORS, BUILDING CODE OFFICIALS, OR OTHER COMPETENT CONSTRUCTION INDUSTRY TRADE PROFESSIONALS HAVING AN INTEREST IN THE SELECTION, SPECIFICATION AND USE OF PRODUCTS MANUFACTURED BY THE SUBSIDIARIES OF USG CORPORATION. THE DRAWINGS ARE INTENDED SOLELY AS TECHNICAL SUPPORT INCIDENT TO THE SALE AND USE OF USG PRODUCTS AND NOT INTENDED TO BE A SUBSTITUTE FOR THE DESIGN REVIEW AND APPROVAL OF THE LICENSED DESIGN PROFESSIONALS FOR THE PROJECT. THESE MATERIALS MAY BE PRINTED AND/OR TRANSFERRED ELECTRONICALLY SOLELY AS NEEDED BY THE USER, BECAUSE CAD/ELECTRONIC FILES AND BIM (BUILDING INFORMATION MODELING) FILES CAN BE MODIFIED BY OTHER PARTIES, WITHOUT NOTICE OR INDICATION OF SUCH MODIFICATIONS, MODIFICATION OF USG PRODUCT CAD AND BIM DRAWINGS IS THE SOLE RESPONSIBILITY OF THE DESIGN PROFESSIONAL. ©2021 USG CORPORATION.