

REFERENCE CURRENT UL SYSTEMS DIRECTORY FOR ALL GENERAL INFORMATION, MATERIAL DESIGNATIONS, THICKNESS AND FIRE RATINGS

DETAIL NOTES - HEAD OF SHAFT WALL - J2131 R1

1	USG SHEETROCK® BRAND GYPSUM LINER
2	USG SHEETROCK® BRAND FIRECODE® X PANELS
3	COMPLETELY FILL GAP ABOVE GYPSUM PANELS WITH USG SHEETROCK® BRAND ACOUSTICAL OR SMOKE-SOUND SEALANT
4	STRUCTURAL SLAB
5	USG SHEETROCK® BRAND FIRECODE® X PANELS, CUT 5/8" FROM TOP OF PARTITION MAX.
6	J-RUNNER
8	USG SHEETROCK® BRAND GYPSUM LINER PANELS, CUT TOP OF PANEL 1" LESS THAN FLOOR-TO-CEILING HEIGHT
9	Z-CLIPS
10	STEEL BEAM WITH FIRE PROOFING
11	STEEL PLATE
12	STEEL STRAP 2"
13	MINERAL WOOL INSULATION
14	UNDERSIDE OF STRUCTURAL SLAB
15	CONTINUOUS 20 GAUGE ANGLE
16	USG SHEETROCK® BRAND FIRECODE® X PANELS, CUT 5/8" FROM UNDERSIDE OF PROTECTED STEEL PLATE
17	USG SHEETROCK® BRAND FIRECODE® X PANELS, CUT 5/8" MAX. LESS FLOOR-TO-BEAM HEIGHT
18	USG SHEETROCK® BRAND FIRECODE® X PANELS INSTALL FLUSH TO UNDERSIDE OF STRUCTURAL SLAB



USG Corporation
550 West Adams Street, Chicago, IL 60661
T. 800-USG4YOU www.USG.com

2-HR HEAD OF WALL UL HW-D-0603

HEAD OF SHAFT WALL DETAILS - USG J2131 R1

ISSUE RECORD:
10/13/21

ISSUE: DATE:

SHEET INFORMATION:
SCALE: 3" = 1'-0"

HS-01

2-HR HEAD OF WALL UL HW-D-0603

DISCLAIMER: THE USG PRODUCT DETAILS CONTAINED HEREIN ARE INTENDED FOR USE AS PRODUCT REFERENCE MATERIAL BY ARCHITECTS, ENGINEERS, OTHER DESIGN PROFESSIONALS, CONTRACTORS, BUILDING CODE OFFICIALS, OR OTHER COMPETENT CONSTRUCTION INDUSTRY TRADE PROFESSIONALS HAVING AN INTEREST IN THE SELECTION, SPECIFICATION AND USE OF PRODUCTS MANUFACTURED BY THE SUBSIDIARIES OF USG CORPORATION. THE DRAWINGS ARE INTENDED SOLELY AS TECHNICAL SUPPORT INCIDENT TO THE SALE AND USE OF USG PRODUCTS AND NOT INTENDED TO BE A SUBSTITUTE FOR THE DESIGN REVIEW AND APPROVAL OF THE LICENSED DESIGN PROFESSIONALS FOR THE PROJECT. THESE MATERIALS MAY BE PRINTED AND/OR TRANSFERRED ELECTRONICALLY SOLELY AS NEEDED BY THE USER, BECAUSE CAD ELECTRONIC FILES AND BIM (BUILDING INFORMATION MODELING) FILES CAN BE MODIFIED BY OTHER PARTIES, WITHOUT NOTICE OR INDICATION OF SUCH MODIFICATIONS, MODIFICATION OF USG PRODUCT CAD AND BIM DRAWINGS IS THE SOLE RESPONSIBILITY OF THE DESIGN PROFESSIONAL. ©2021 USG CORPORATION.



1	USG SHEETROCK® BRAND GYPSUM LINER
2	USG SHEETROCK® BRAND FIRECODE® X PANELS
3	COMPLETELY FILL GAP ABOVE GYPSUM PANELS WITH USG SHEETROCK® BRAND ACOUSTICAL OR SMOKE-SOUND SEALANT
4	STRUCTURAL SLAB
5	USG SHEETROCK® BRAND FIRECODE® X PANELS, CUT 5/8" FROM TOP OF PARTITION MAX.
6	J-RUNNER
8	USG SHEETROCK® BRAND GYPSUM LINER PANELS, CUT TOP OF PANEL 1" LESS THAN FLOOR-TO-CEILING HEIGHT
9	Z-CLIPS
10	STEEL BEAM WITH FIRE PROOFING
11	STEEL PLATE
12	STEEL STRAP 2"
13	MINERAL WOOL INSULATION
14	UNDERSIDE OF STRUCTURAL SLAB
15	CONTINUOUS 20 GAUGE ANGLE
16	USG SHEETROCK® BRAND FIRECODE® X PANELS, CUT 5/8" FROM UNDERSIDE OF PROTECTED STEEL PLATE
17	USG SHEETROCK® BRAND FIRECODE® X PANELS, CUT 5/8 MAX. LESS FLOOR-TO-BEAM HEIGHT
18	USG SHEETROCK® BRAND FIRECODE® X PANELS INSTALL FLUSH TO UNDERSIDE OF STRUCTURAL SLAB



USG Corporation
550 West Adams Street, Chicago, IL 60661
T. 800-USG4YOU www.USG.com

HEAD OF WALL UL HW-D-0609
(1-HR AND 2-HR)
HEAD OF SHAFT WALL DETAILS - USG J2131 R1

ISSUE RECORD:
10/13/21

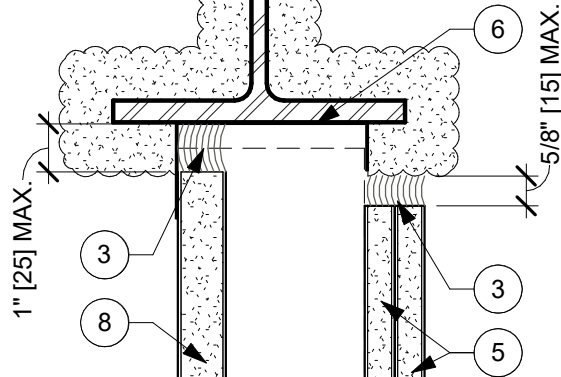
ISSUE: DATE:

SHEET INFORMATION:
SCALE: 3" = 1'-0"

HS-02

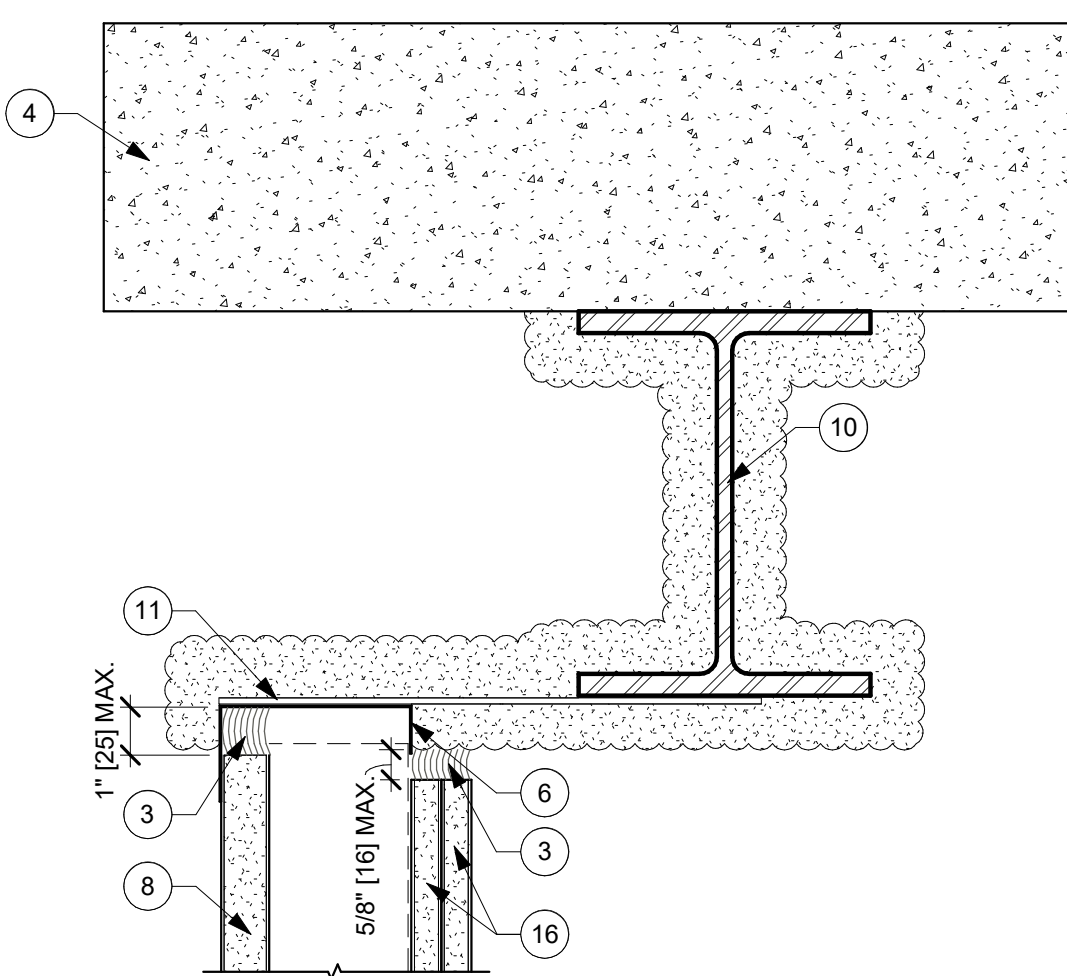
HEAD OF WALL UL HW-D-0609 (1-HR AND 2-HR)

[illegible]



1	USG SHEETROCK® BRAND GYPSUM LINER
2	USG SHEETROCK® BRAND FIRECODE® X PANELS
3	COMPLETELY FILL GAP ABOVE GYPSUM PANELS WITH USG SHEETROCK® BRAND ACOUSTICAL OR SMOKE-SOUND SEALANT
4	STRUCTURAL SLAB
5	USG SHEETROCK® BRAND FIRECODE® X PANELS, CUT 5/8" FROM TOP OF PARTITION MAX.
6	J-RUNNER
8	USG SHEETROCK® BRAND GYPSUM LINER PANELS, CUT TOP OF PANEL 1" LESS THAN FLOOR-TO-CEILING HEIGHT
9	Z-CLIPS
10	STEEL BEAM WITH FIRE PROOFING
11	STEEL PLATE
12	STEEL STRAP 2"
13	MINERAL WOOL INSULATION
14	UNDERSIDE OF STRUCTURAL SLAB
15	CONTINUOUS 20 GAUGE ANGLE
16	USG SHEETROCK® BRAND FIRECODE® X PANELS, CUT 5/8" FROM UNDERSIDE OF PROTECTED STEEL PLATE
17	USG SHEETROCK® BRAND FIRECODE® X PANELS, CUT 5/8 MAX. LESS FLOOR-TO-BEAM HEIGHT
18	USG SHEETROCK® BRAND FIRECODE® X PANELS INSTALL FLUSH TO UNDERSIDE OF STRUCTURAL SLAB

DISCLAIMER: THE USER PRODUCT DETAILS CONTAINED HEREIN ARE INTENDED FOR USE AS PRODUCT REFERENCE MATERIAL ONLY BY ARCHITECTS, ENGINEERS, CONTRACTOR DESIGN PROFESSIONALS, CONTRACTORS, BUILDING CODE OFFICIALS, OR OTHER COMPETENT CONSTRUCTION INDUSTRY TRADE PROFESSIONALS HAVING AN INTEREST IN THE SELECTION, SPECIFICATION AND USE OF PRODUCTS MANUFACTURED BY THE SUBSIDIARIES OF USG CORPORATION. THE DRAWINGS ARE INTENDED SOLELY AS TECHNICAL SUPPORT MATERIAL TO THE SALE AND USE OF USG PRODUCTS AND NOT INTENDED TO BE A BASIS FOR THE DESIGN AND/OR DETAIL OF ANY DESIGN OR CONSTRUCTION PROJECTS. FOR THE PROTECT, THESE MATERIALS MAY BE REPRODUCED, ENGINEERED, TRANSMITTED, OR OTHERWISE USED IN ANY MANNER WITHOUT WRITTEN PERMISSION FROM USG CORPORATION. NO PART OF THIS DOCUMENT SHALL BE REPRODUCED OR TRANSMITTED IN ANY FORM OR BY ANY MEANS, ELECTRONIC OR MECHANICAL, INCLUDING PHOTOCOPYING, RECORDING, OR BY ANY INFORMATION STORAGE AND RETRIEVAL SYSTEM, WITHOUT PERMISSION FROM USG CORPORATION. ANY UNAUTHORIZED REPRODUCTION OR TRANSMISSION OF THIS DOCUMENT IS STRICTLY PROHIBITED. ©2019 USG CORPORATION.



DETAIL NOTES - HEAD OF SHAFT WALL - J2131 R1

1	USG SHEETROCK® BRAND GYPSUM LINER
2	USG SHEETROCK® BRAND FIRECODE® X PANELS
3	COMPLETELY FILL GAP ABOVE GYPSUM PANELS WITH USG SHEETROCK® BRAND ACOUSTICAL OR SMOKE-SOUND SEALANT
4	STRUCTURAL SLAB
5	USG SHEETROCK® BRAND FIRECODE® X PANELS, CUT 5/8" FROM TOP OF PARTITION MAX.
6	J-RUNNER
8	USG SHEETROCK® BRAND GYPSUM LINER PANELS, CUT TOP OF PANEL 1" LESS THAN FLOOR-TO-CEILING HEIGHT
9	Z-CLIPS
10	STEEL BEAM WITH FIRE PROOFING
11	STEEL PLATE
12	STEEL STRAP 2"
13	MINERAL WOOL INSULATION
14	UNDERSIDE OF STRUCTURAL SLAB
15	CONTINUOUS 20 GAUGE ANGLE
16	USG SHEETROCK® BRAND FIRECODE® X PANELS, CUT 5/8" FROM UNDERSIDE OF PROTECTED STEEL PLATE
17	USG SHEETROCK® BRAND FIRECODE® X PANELS, CUT 5/8" MAX. LESS FLOOR-TO-BEAM HEIGHT
18	USG SHEETROCK® BRAND FIRECODE® X PANELS INSTALL FLUSH TO UNDERSIDE OF STRUCTURAL SLAB



USG Corporation
550 West Adams Street, Chicago, IL 60661
T. 800-USG4YOU www.USG.com

HEAD OF WALL UL HW-D-0611 (1-HR AND 2-HR) HEAD OF SHAFT WALL DETAILS - USG J2131 R1

ISSUE RECORD:
10/13/21

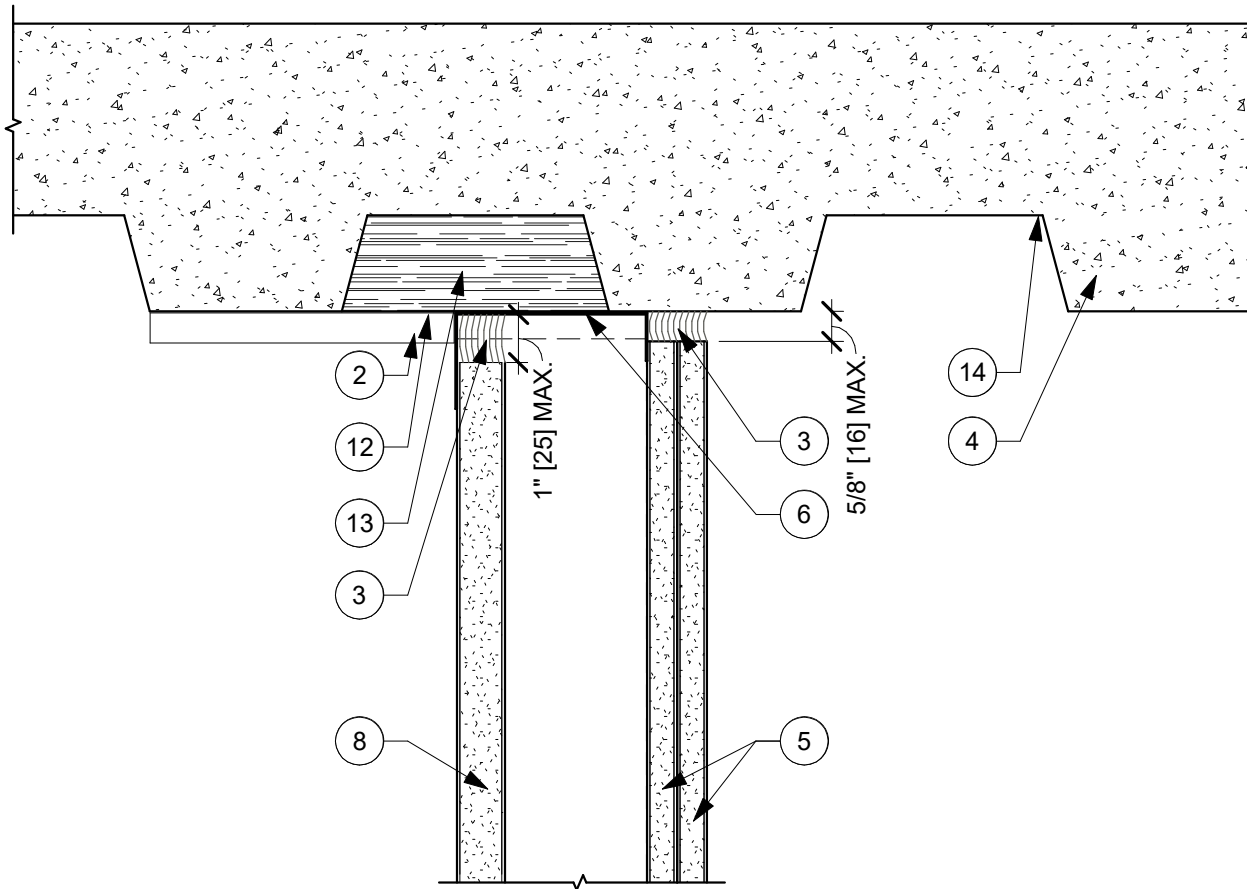
ISSUE: DATE:

SHEET INFORMATION:
SCALE: 3" = 1'-0"

HS-04

HEAD OF WALL UL HW-D-0611 (1-HR AND 2-HR)

DISCLAIMER: THE USG PRODUCT DETAILS CONTAINED HEREIN ARE INTENDED FOR USE AS PRODUCT REFERENCE MATERIAL BY ARCHITECTS, ENGINEERS, OTHER DESIGN PROFESSIONALS, CONTRACTORS, BUILDING CODE OFFICIALS, OR OTHER COMPETENT CONSTRUCTION INDUSTRY TRADE PROFESSIONALS HAVING AN INTEREST IN THE SELECTION, SPECIFICATION AND USE OF PRODUCTS MANUFACTURED BY THE SUBSIDIARIES OF USG CORPORATION. THE DRAWINGS ARE INTENDED SOLELY AS TECHNICAL SUPPORT INCIDENT TO THE SALE AND USE OF USG PRODUCTS AND NOT INTENDED TO BE A SUBSTITUTE FOR THE DESIGN REVIEW AND APPROVAL OF THE LICENSED DESIGN PROFESSIONALS FOR THE PROJECT. THESE MATERIALS MAY BE PRINTED AND/OR TRANSFERRED ELECTRONICALLY SOLELY AS NEEDED BY THE USER, BECAUSE CAD/ELECTRONIC FILES AND BIM (BUILDING INFORMATION MODELING) FILES CAN BE MODIFIED BY OTHER PARTIES, WITHOUT NOTICE OR INDICATION OF SUCH MODIFICATIONS, MODIFICATION OF USG PRODUCT CAD AND BIM DRAWINGS IS THE SOLE RESPONSIBILITY OF THE DESIGN PROFESSIONAL. ©2021 USG CORPORATION.



DETAIL NOTES - HEAD OF SHAFT WALL - J2131 R1

1	USG SHEETROCK® BRAND GYPSUM LINER
2	USG SHEETROCK® BRAND FIRECODE® X PANELS
3	COMPLETELY FILL GAP ABOVE GYPSUM PANELS WITH USG SHEETROCK® BRAND ACOUSTICAL OR SMOKE-SOUND SEALANT
4	STRUCTURAL SLAB
5	USG SHEETROCK® BRAND FIRECODE® X PANELS, CUT 5/8" FROM TOP OF PARTITION MAX.
6	J-RUNNER
8	USG SHEETROCK® BRAND GYPSUM LINER PANELS, CUT TOP OF PANEL 1" LESS THAN FLOOR-TO-CEILING HEIGHT
9	Z-CLIPS
10	STEEL BEAM WITH FIRE PROOFING
11	STEEL PLATE
12	STEEL STRAP 2"
13	MINERAL WOOL INSULATION
14	UNDERSIDE OF STRUCTURAL SLAB
15	CONTINUOUS 20 GAUGE ANGLE
16	USG SHEETROCK® BRAND FIRECODE® X PANELS, CUT 5/8" FROM UNDERSIDE OF PROTECTED STEEL PLATE
17	USG SHEETROCK® BRAND FIRECODE® X PANELS, CUT 5/8 MAX. LESS FLOOR-TO-BEAM HEIGHT
18	USG SHEETROCK® BRAND FIRECODE® X PANELS INSTALL FLUSH TO UNDERSIDE OF STRUCTURAL SLAB

REFERENCE CURRENT UL SYSTEMS DIRECTORY FOR ALL GENERAL INFORMATION, MATERIAL DESIGNATIONS, THICKNESS AND FIRE RATINGS.



USG Corporation
550 West Adams Street, Chicago, IL 60661
T. 800-USG4YOU www.USG.com

2-HR HEAD OF WALL UL HW-D-0613

HEAD OF SHAFT WALL DETAILS - USG J2131 R1

ISSUE RECORD:
10/13/21

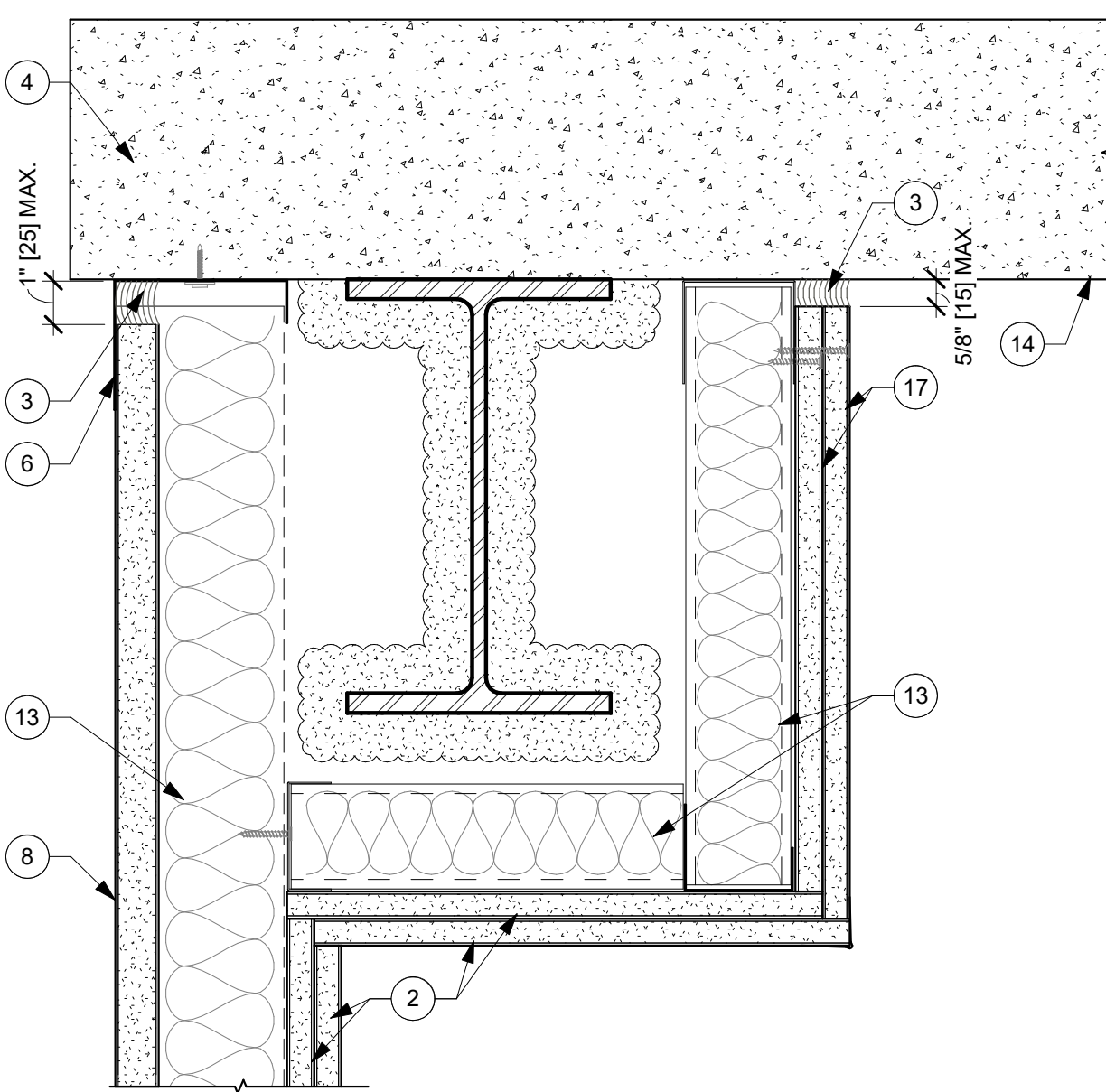
ISSUE: DATE:

SHEET INFORMATION:
SCALE: 3" = 1'-0"

HS-05

2-HR HEAD OF WALL UL HW-D-0613

DISCLAIMER: THE USG PRODUCT DETAILS CONTAINED HEREIN ARE INTENDED FOR USE AS PRODUCT REFERENCE MATERIAL BY ARCHITECTS, ENGINEERS, OTHER DESIGN PROFESSIONALS, CONTRACTORS, BUILDING CODE OFFICIALS, OR OTHER COMPETENT CONSTRUCTION INDUSTRY TRADE PROFESSIONALS HAVING AN INTEREST IN THE SELECTION, SPECIFICATION AND USE OF PRODUCTS MANUFACTURED BY THE SUBSIDIARIES OF USG CORPORATION. THE DRAWINGS ARE INTENDED SOLELY AS TECHNICAL SUPPORT INCIDENT TO THE SALE AND USE OF USG PRODUCTS AND NOT INTENDED TO BE A SUBSTITUTE FOR THE DESIGN REVIEW AND APPROVAL OF THE LICENSED DESIGN PROFESSIONALS FOR THE PROJECT. THESE MATERIALS MAY BE PRINTED AND/OR TRANSFERRED ELECTRONICALLY SOLELY AS NEEDED BY THE USER, BECAUSE CAD ELECTRONIC FILES AND BIM (BUILDING INFORMATION MODELING) FILES CAN BE MODIFIED BY OTHER PARTIES, WITHOUT NOTICE OR INDICATION OF SUCH MODIFICATIONS, MODIFICATION OF USG PRODUCT CAD AND BIM DRAWINGS IS THE SOLE RESPONSIBILITY OF THE DESIGN PROFESSIONAL. ©2021 USG CORPORATION.



DETAIL NOTES - HEAD OF SHAFT WALL - J2131 R1

1	USG SHEETROCK® BRAND GYPSUM LINER
2	USG SHEETROCK® BRAND FIRECODE® X PANELS
3	COMPLETELY FILL GAP ABOVE GYPSUM PANELS WITH USG SHEETROCK® BRAND ACOUSTICAL OR SMOKE-SOUND SEALANT
4	STRUCTURAL SLAB
5	USG SHEETROCK® BRAND FIRECODE® X PANELS, CUT 5/8" FROM TOP OF PARTITION MAX.
6	J-RUNNER
8	USG SHEETROCK® BRAND GYPSUM LINER PANELS, CUT TOP OF PANEL 1" LESS THAN FLOOR-TO-CEILING HEIGHT
9	Z-CLIPS
10	STEEL BEAM WITH FIRE PROOFING
11	STEEL PLATE
12	STEEL STRAP 2"
13	MINERAL WOOL INSULATION
14	UNDERSIDE OF STRUCTURAL SLAB
15	CONTINUOUS 20 GAUGE ANGLE
16	USG SHEETROCK® BRAND FIRECODE® X PANELS, CUT 5/8" FROM UNDERSIDE OF PROTECTED STEEL PLATE
17	USG SHEETROCK® BRAND FIRECODE® X PANELS, CUT 5/8" MAX. LESS FLOOR-TO-BEAM HEIGHT
18	USG SHEETROCK® BRAND FIRECODE® X PANELS INSTALL FLUSH TO UNDERSIDE OF STRUCTURAL SLAB



USG Corporation
550 West Adams Street, Chicago, IL 60661
T. 800-USG4YOU www.USG.com

2-HR HEAD OF WALL ADJACENT TO BEAM

HEAD OF SHAFT WALL DETAILS - USG J2131 R1

ISSUE RECORD:
10/13/21

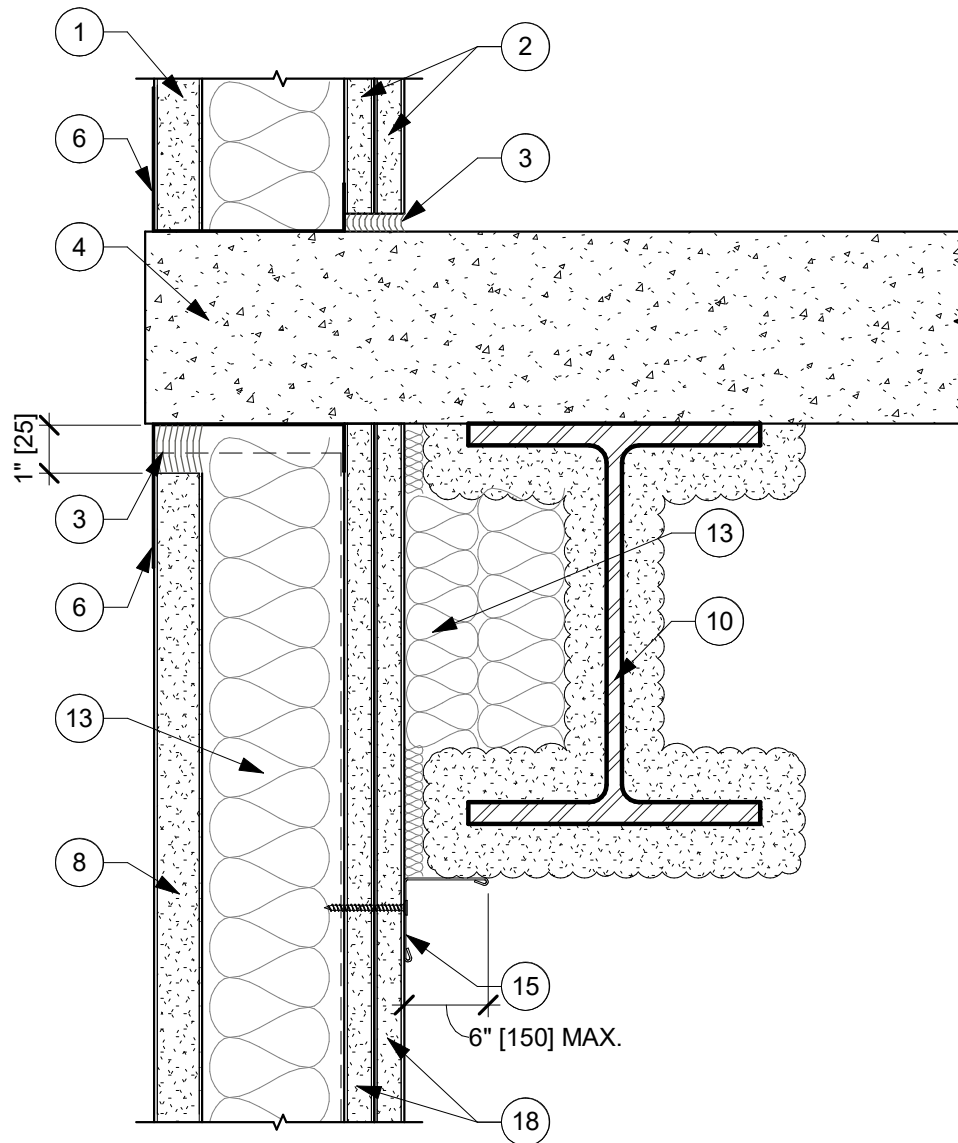
ISSUE: DATE:

SHEET INFORMATION:
SCALE: 3" = 1'-0"

HS-06

2-HR HEAD OF WALL ADJACENT TO BEAM

DISCLAIMER: THE USG PRODUCT DETAILS CONTAINED HEREIN ARE INTENDED FOR USE AS PRODUCT REFERENCE MATERIAL BY ARCHITECTS, ENGINEERS, OTHER DESIGN PROFESSIONALS, CONTRACTORS, BUILDING CODE OFFICIALS, OR OTHER COMPETENT CONSTRUCTION INDUSTRY TRADE PROFESSIONALS HAVING AN INTEREST IN THE SELECTION, SPECIFICATION AND USE OF PRODUCTS MANUFACTURED BY THE SUBSIDIARIES OF USG CORPORATION. THE DRAWINGS ARE INTENDED SOLELY AS TECHNICAL SUPPORT INCIDENT TO THE SALE AND USE OF USG PRODUCTS AND NOT INTENDED TO BE A SUBSTITUTE FOR THE DESIGN REVIEW AND APPROVAL OF THE LICENSED DESIGN PROFESSIONALS FOR THE PROJECT. THESE MATERIALS MAY BE PRINTED AND/OR TRANSFERRED ELECTRONICALLY SOLELY AS NEEDED BY THE USER, BECAUSE CAD ELECTRONIC FILES AND BIM (BUILDING INFORMATION MODELING) FILES CAN BE MODIFIED BY OTHER PARTIES, WITHOUT NOTICE OR INDICATION OF SUCH MODIFICATIONS, MODIFICATION OF USG PRODUCT CAD AND BIM DRAWINGS IS THE SOLE RESPONSIBILITY OF THE DESIGN PROFESSIONAL. ©2021 USG CORPORATION.



DETAIL NOTES - HEAD OF SHAFT WALL - J2131 R1

1	USG SHEETROCK® BRAND GYPSUM LINER
2	USG SHEETROCK® BRAND FIRECODE® X PANELS
3	COMPLETELY FILL GAP ABOVE GYPSUM PANELS WITH USG SHEETROCK® BRAND ACOUSTICAL OR SMOKE-SOUND SEALANT
4	STRUCTURAL SLAB
5	USG SHEETROCK® BRAND FIRECODE® X PANELS, CUT 5/8" FROM TOP OF PARTITION MAX.
6	J-RUNNER
8	USG SHEETROCK® BRAND GYPSUM LINER PANELS, CUT TOP OF PANEL 1" LESS THAN FLOOR-TO-CEILING HEIGHT
9	Z-CLIPS
10	STEEL BEAM WITH FIRE PROOFING
11	STEEL PLATE
12	STEEL STRAP 2"
13	MINERAL WOOL INSULATION
14	UNDERSIDE OF STRUCTURAL SLAB
15	CONTINUOUS 20 GAUGE ANGLE
16	USG SHEETROCK® BRAND FIRECODE® X PANELS, CUT 5/8" FROM UNDERSIDE OF PROTECTED STEEL PLATE
17	USG SHEETROCK® BRAND FIRECODE® X PANELS, CUT 5/8" MAX. LESS FLOOR-TO-BEAM HEIGHT
18	USG SHEETROCK® BRAND FIRECODE® X PANELS INSTALL FLUSH TO UNDERSIDE OF STRUCTURAL SLAB



USG Corporation
550 West Adams Street, Chicago, IL 60661
T. 800-USG4YOU www.USG.com

2-HR SHAFTWALL ADJACENT TO BEAM

HEAD OF SHAFT WALL DETAILS - USG J2131 R1

ISSUE RECORD:
10/13/21

ISSUE: DATE:

SHEET INFORMATION:
SCALE: 3" = 1'-0"

HS-07

2-HR SHAFTWALL ADJACENT TO BEAM

DISCLAIMER: THE USG PRODUCT DETAILS CONTAINED HEREIN ARE INTENDED FOR USE AS PRODUCT REFERENCE MATERIAL BY ARCHITECTS, ENGINEERS, OTHER DESIGN PROFESSIONALS, CONTRACTORS, BUILDING CODE OFFICIALS, OR OTHER COMPETENT CONSTRUCTION INDUSTRY TRADE PROFESSIONALS HAVING AN INTEREST IN THE SELECTION, SPECIFICATION AND USE OF PRODUCTS MANUFACTURED BY THE SUBSIDIARIES OF USG CORPORATION. THE DRAWINGS ARE INTENDED SOLELY AS TECHNICAL SUPPORT INCIDENT TO THE SALE AND USE OF USG PRODUCTS AND NOT INTENDED TO BE A SUBSTITUTE FOR THE DESIGN REVIEW AND APPROVAL OF THE LICENSED DESIGN PROFESSIONALS FOR THE PROJECT. THESE MATERIALS MAY BE PRINTED AND/OR TRANSFERRED ELECTRONICALLY SOLELY AS NEEDED BY THE USER, BECAUSE CAD ELECTRONIC FILES AND BIM (BUILDING INFORMATION MODELING) FILES CAN BE MODIFIED BY OTHER PARTIES, WITHOUT NOTICE OR INDICATION OF SUCH MODIFICATIONS, MODIFICATION OF USG PRODUCT CAD AND BIM DRAWINGS IS THE SOLE RESPONSIBILITY OF THE DESIGN PROFESSIONAL. ©2021 USG CORPORATION.