

DETAIL NOTES - HEAD OF WALL - J2132

1	USG SHEETROCK X PANELS, REFERENCE UL HW-D-0001 FOR JOINT WIDTH INFORMATION
2	COMPLETELY FILL GAP ABOVE GYPSUM PANELS WITH USG SHEETROCK ACOUSTICAL OR SMOKE-SOUND SEALANT
3	STRUCTURAL SLAB
4	USG SHEETROCK FIRECODE X PANELS, CUT 5/8" MAX. FROM TOP OF PARTITION
5	MIN. 1/2" [12.5] THICK USG SHEETROCK FIRECODE COMPOUND
6	Z-CLIPS
7	STEEL BEAM WITH FIRE PROOFING
8	STEEL PLATE, EXTEND FIRE PROOFING FROM STEEL BEAM ONTO PLATE
9	MINERAL WOOL INSULATION
10	UNDERSIDE OF STRUCTURAL SLAB
11	CONTINUOUS 20-GAUGE ANGLE, FASTEN TO STUDS
12	PERFORATED METAL PLATE, SPAN BETWEEN FLUTES, REFERENCE HW-D-0001 FOR MORE INFORMATION
13	RESTRAINING ANGLE LINED WITH GYPSUM BOARD, MATCHING PARTITION BELOW
14	FASTENERS TO BE SET FLUSH ON DRYWALL SIDE
15	TRACK STUD
16	MIN. 1/2" [13] THICK USG SHEETROCK FIRECODE COMPOUND
17	MINERAL WOOL BATT INSULATION
18	USG SHEETROCK X PANELS, CUT 5/8" FROM UNDERSIDE OF PROTECTED STEEL PLATE
19	MINERAL WOOL FILL MATERIAL
20	CEILING HEAD AND RELIEF TRACK
21	LAP SEALANT 1/2" BELOW TOP OF GYPSUM PANELS (BOTH SIDES)
22	USG SHEETROCK X PANELS, BUTT TIGHT TO UNDERSIDE OF STEEL DECK, THICKNESS PER ARCHITECT
23	USG SHEETROCK X PANELS, CUT 1/2" MAX. FROM TOP OF PARTITION, THICKNESS PER ARCHITECT
24	USG SHEETROCK X PANELS, REFERENCE UL HW-D-0002 FOR JOINT WIDTH INFORMATION
25	USG SHEETROCK FIRECODE X PANELS
26	COMPLETELY FILL GAP ABOVE GYPSUM PANELS WITH USG SHEETROCK ACOUSTICAL OR SMOKE-SOUND SEALANT (BOTH SIDES)
27	STEEL BEAM WITH FIRE PROOFING REFERENCE STRUCTURAL DRAWINGS FOR BEAM SIZE AND FIREPROOFING THICKNESS
28	UNDERSIDE OF COMPOSITE STRUCTURAL SLAB
29	FILL CAVITY WITH MINERAL WOOL
30	CUT DRYWALL SHORT OF STRUCTURAL DECK BY 5/8"



USG Corporation
550 West Adams Street, Chicago, IL 60661
T. 800-USG4YOU www.USG.com

1 HR HEAD OF WALL UL HW-D-0001 PARALLEL TO DECK FLUTES HEAD OF WALL DETAILS - USG J2132 R1

ISSUE RECORD:
10/04/21

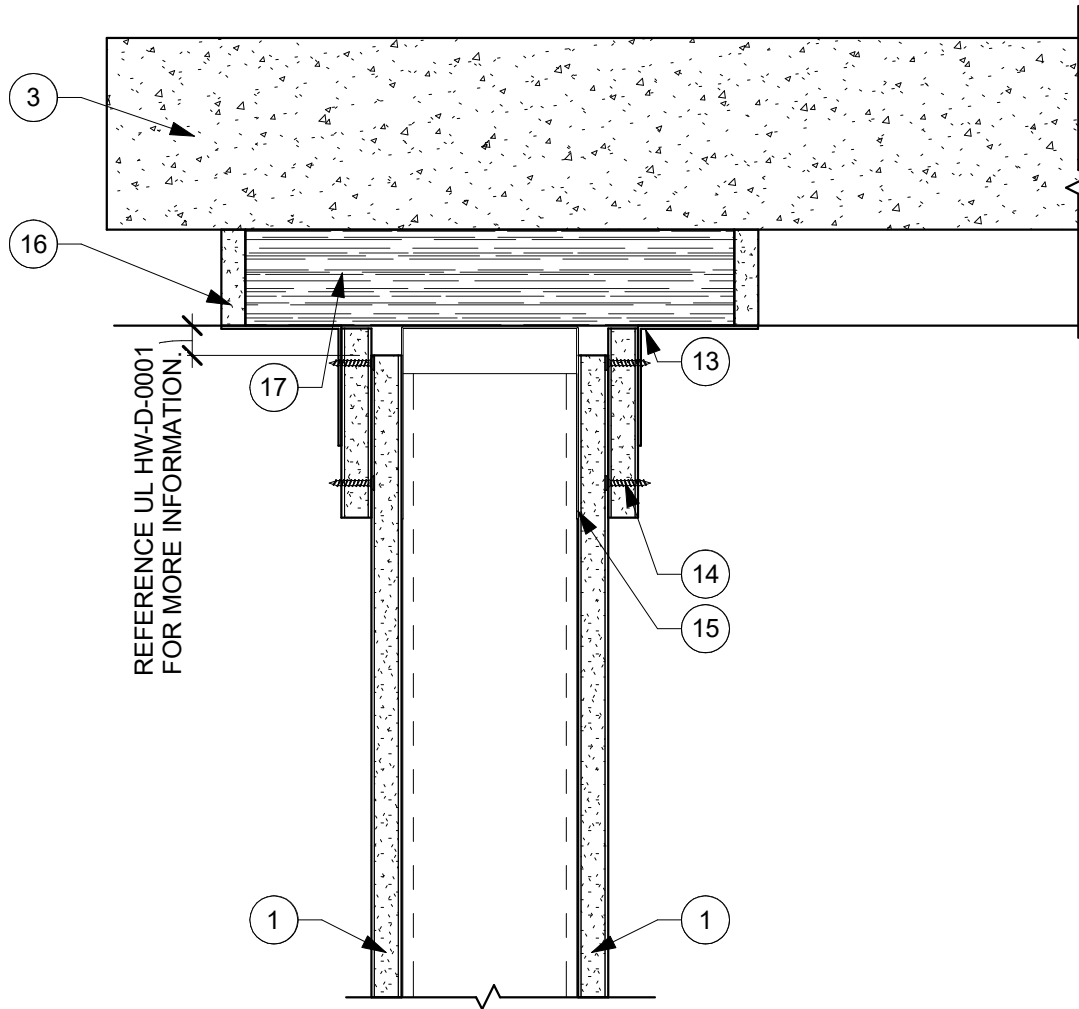
ISSUE: DATE:

SHEET INFORMATION:
SCALE: 3" = 1'-0"

HW-01

1 HR HEAD OF WALL UL HW-D-0001 PARALLEL TO
DECK FLUTES

DISCLAIMER: THE USG PRODUCT DETAILS CONTAINED HEREIN ARE INTENDED FOR USE AS PRODUCT REFERENCE MATERIAL BY ARCHITECTS, ENGINEERS, OTHER DESIGN PROFESSIONALS, CONTRACTORS, BUILDING CODE OFFICIALS, OR OTHER COMPETENT CONSTRUCTION INDUSTRY TRADE PROFESSIONALS HAVING AN INTEREST IN THE SELECTION, SPECIFICATION AND USE OF PRODUCTS MANUFACTURED BY THE SUBSIDIARIES OF USG CORPORATION. THE DRAWINGS ARE INTENDED SOLELY AS TECHNICAL SUPPORT INCIDENT TO THE SALE AND USE OF USG PRODUCTS AND NOT INTENDED TO BE A SUBSTITUTE FOR THE DESIGN REVIEW AND APPROVAL OF THE LICENSED DESIGN PROFESSIONALS FOR THE PROJECT. THESE MATERIALS MAY BE PRINTED AND/OR TRANSFERRED ELECTRONICALLY SOLELY AS NEEDED BY THE USER, BECAUSE CAD ELECTRONIC FILES AND BIM (BUILDING INFORMATION MODELING) FILES CAN BE MODIFIED BY OTHER PARTIES, WITHOUT NOTICE OR INDICATION OF SUCH MODIFICATIONS, MODIFICATION OF USG PRODUCT CAD AND BIM DRAWINGS IS THE SOLE RESPONSIBILITY OF THE DESIGN PROFESSIONAL. ©2021 USG CORPORATION.



DETAIL NOTES - HEAD OF WALL - J2132

1	USG SHEETROCK X PANELS, REFERENCE UL HW-D-0001 FOR JOINT WIDTH INFORMATION
2	COMPLETELY FILL GAP ABOVE GYPSUM PANELS WITH USG SHEETROCK ACOUSTICAL OR SMOKE-SOUND SEALANT
3	STRUCTURAL SLAB
4	USG SHEETROCK FIRECODE X PANELS, CUT 5/8" MAX. FROM TOP OF PARTITION
5	MIN. 1/2" [12.5] THICK USG SHEETROCK FIRECODE COMPOUND
6	Z-CLIPS
7	STEEL BEAM WITH FIRE PROOFING
8	STEEL PLATE, EXTEND FIRE PROOFING FROM STEEL BEAM ONTO PLATE
9	MINERAL WOOL INSULATION
10	UNDERSIDE OF STRUCTURAL SLAB
11	CONTINUOUS 20-GAUGE ANGLE, FASTEN TO STUDS
12	PERFORATED METAL PLATE, SPAN BETWEEN FLUTES, REFERENCE HW-D-0001 FOR MORE INFORMATION
13	RESTRAINING ANGLE LINED WITH GYPSUM BOARD, MATCHING PARTITION BELOW
14	FASTENERS TO BE SET FLUSH ON DRYWALL SIDE
15	TRACK STUD
16	MIN. 1/2" [13] THICK USG SHEETROCK FIRECODE COMPOUND
17	MINERAL WOOL BATT INSULATION
18	USG SHEETROCK X PANELS, CUT 5/8" FROM UNDERSIDE OF PROTECTED STEEL PLATE
19	MINERAL WOOL FILL MATERIAL
20	CEILING HEAD AND RELIEF TRACK
21	LAP SEALANT 1/2" BELOW TOP OF GYPSUM PANELS (BOTH SIDES)
22	USG SHEETROCK X PANELS, BUTT TIGHT TO UNDERSIDE OF STEEL DECK, THICKNESS PER ARCHITECT
23	USG SHEETROCK X PANELS, CUT 1/2" MAX. FROM TOP OF PARTITION, THICKNESS PER ARCHITECT
24	USG SHEETROCK X PANELS, REFERENCE UL HW-D-0002 FOR JOINT WIDTH INFORMATION
25	USG SHEETROCK FIRECODE X PANELS
26	COMPLETELY FILL GAP ABOVE GYPSUM PANELS WITH USG SHEETROCK ACOUSTICAL OR SMOKE-SOUND SEALANT (BOTH SIDES)
27	STEEL BEAM WITH FIRE PROOFING REFERENCE STRUCTURAL DRAWINGS FOR BEAM SIZE AND FIREPROOFING THICKNESS
28	UNDERSIDE OF COMPOSITE STRUCTURAL SLAB
29	FILL CAVITY WITH MINERAL WOOL
30	CUT DRYWALL SHORT OF STRUCTURAL DECK BY 5/8"



USG Corporation
550 West Adams Street, Chicago, IL 60661
T. 800-USG4YOU www.USG.com

1 HR HEAD OF WALL UL HW-D-0001 PERPENDICULAR TO DECK FLUTES

HEAD OF WALL DETAILS - USG J2132 R1

ISSUE RECORD:
10/04/21

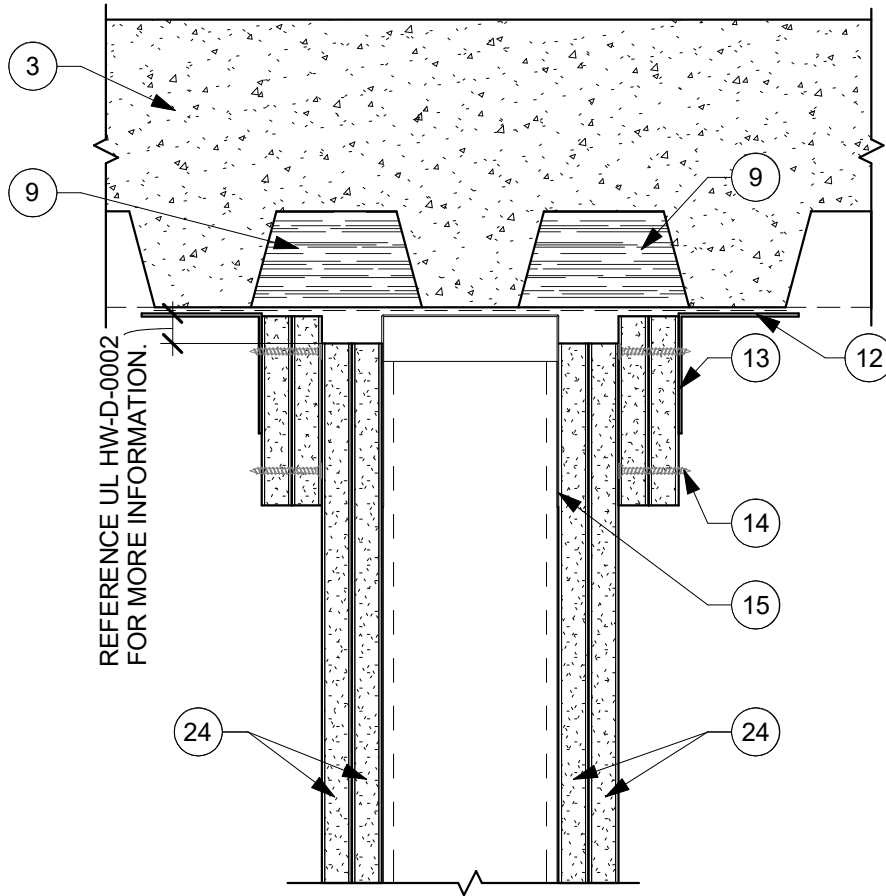
ISSUE: DATE:

SHEET INFORMATION:
SCALE: 3" = 1'-0"

HW-02

1 HR HEAD OF WALL UL HW-D-0001 PERPENDICULAR
TO DECK FLUTES

DISCLAIMER: THE USG PRODUCT DETAILS CONTAINED HEREIN ARE INTENDED FOR USE AS PRODUCT REFERENCE MATERIAL BY ARCHITECTS, ENGINEERS, OTHER DESIGN PROFESSIONALS, CONTRACTORS, BUILDING CODE OFFICIALS, OR OTHER COMPETENT CONSTRUCTION INDUSTRY TRADE PROFESSIONALS HAVING AN INTEREST IN THE SELECTION, SPECIFICATION AND USE OF PRODUCTS MANUFACTURED BY THE SUBSIDIARIES OF USG CORPORATION. THE DRAWINGS ARE INTENDED SOLELY AS TECHNICAL SUPPORT INCIDENT TO THE SALE AND USE OF USG PRODUCTS AND NOT INTENDED TO BE A SUBSTITUTE FOR THE DESIGN REVIEW AND APPROVAL OF THE LICENSED DESIGN PROFESSIONALS FOR THE PROJECT. THESE MATERIALS MAY BE PRINTED AND/OR TRANSFERRED ELECTRONICALLY SOLELY AS NEEDED BY THE USER, BECAUSE CAD/ELECTRONIC FILES AND BIM (BUILDING INFORMATION MODELING) FILES CAN BE MODIFIED BY OTHER PARTIES, WITHOUT NOTICE OR INDICATION OF SUCH MODIFICATIONS, MODIFICATION OF USG PRODUCT CAD AND BIM DRAWINGS IS THE SOLE RESPONSIBILITY OF THE DESIGN PROFESSIONAL. ©2021 USG CORPORATION.



DETAIL NOTES - HEAD OF WALL - J2132

1	USG SHEETROCK X PANELS, REFERENCE UL HW-D-0001 FOR JOINT WIDTH INFORMATION
2	COMPLETELY FILL GAP ABOVE GYPSUM PANELS WITH USG SHEETROCK ACOUSTICAL OR SMOKE-SOUND SEALANT
3	STRUCTURAL SLAB
4	USG SHEETROCK FIRECODE X PANELS, CUT 5/8" MAX. FROM TOP OF PARTITION
5	MIN. 1/2" [12.5] THICK USG SHEETROCK FIRECODE COMPOUND
6	Z-CLIPS
7	STEEL BEAM WITH FIRE PROOFING
8	STEEL PLATE, EXTEND FIRE PROOFING FROM STEEL BEAM ONTO PLATE
9	MINERAL WOOL INSULATION
10	UNDERSIDE OF STRUCTURAL SLAB
11	CONTINUOUS 20-GAUGE ANGLE, FASTEN TO STUDS
12	PERFORATED METAL PLATE, SPAN BETWEEN FLUTES, REFERENCE HW-D-0001 FOR MORE INFORMATION
13	RESTRAINING ANGLE LINED WITH GYPSUM BOARD, MATCHING PARTITION BELOW
14	FASTENERS TO BE SET FLUSH ON DRYWALL SIDE
15	TRACK STUD
16	MIN. 1/2" [13] THICK USG SHEETROCK FIRECODE COMPOUND
17	MINERAL WOOL BATT INSULATION
18	USG SHEETROCK X PANELS, CUT 5/8" FROM UNDERSIDE OF PROTECTED STEEL PLATE
19	MINERAL WOOL FILL MATERIAL
20	CEILING HEAD AND RELIEF TRACK
21	LAP SEALANT 1/2" BELOW TOP OF GYPSUM PANELS (BOTH SIDES)
22	USG SHEETROCK X PANELS, BUTT TIGHT TO UNDERSIDE OF STEEL DECK, THICKNESS PER ARCHITECT
23	USG SHEETROCK X PANELS, CUT 1/2" MAX. FROM TOP OF PARTITION, THICKNESS PER ARCHITECT
24	USG SHEETROCK X PANELS, REFERENCE UL HW-D-0002 FOR JOINT WIDTH INFORMATION
25	USG SHEETROCK FIRECODE X PANELS
26	COMPLETELY FILL GAP ABOVE GYPSUM PANELS WITH USG SHEETROCK ACOUSTICAL OR SMOKE-SOUND SEALANT (BOTH SIDES)
27	STEEL BEAM WITH FIRE PROOFING REFERENCE STRUCTURAL DRAWINGS FOR BEAM SIZE AND FIREPROOFING THICKNESS
28	UNDERSIDE OF COMPOSITE STRUCTURAL SLAB
29	FILL CAVITY WITH MINERAL WOOL
30	CUT DRYWALL SHORT OF STRUCTURAL DECK BY 5/8"



USG Corporation
550 West Adams Street, Chicago, IL 60661
T. 800-USG4YOU www.USG.com

2-HR HEAD OF WALL UL HW-D-0002 PARALLEL TO DECK FLUTES HEAD OF WALL DETAILS - USG J2132 R1

ISSUE RECORD:
10/04/21

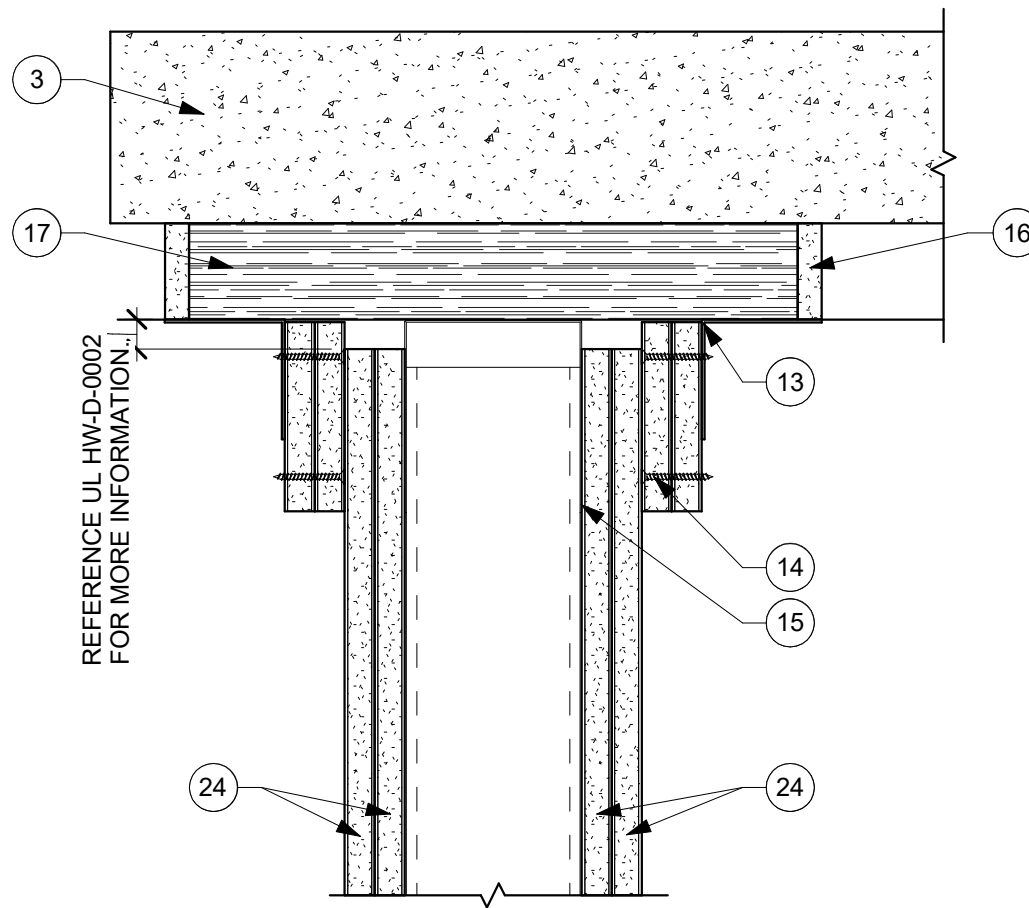
ISSUE: DATE:

SHEET INFORMATION:
SCALE: 3" = 1'-0"

HW-03

2-HR HEAD OF WALL UL HW-D-0002 PARALLEL TO
DECK FLUTES

DISCLAIMER: THE USG PRODUCT DETAILS CONTAINED HEREIN ARE INTENDED FOR USE AS PRODUCT REFERENCE MATERIAL BY ARCHITECTS, ENGINEERS, OTHER DESIGN PROFESSIONALS, CONTRACTORS, BUILDING CODE OFFICIALS, OR OTHER COMPETENT CONSTRUCTION INDUSTRY TRADE PROFESSIONALS HAVING AN INTEREST IN THE SELECTION, SPECIFICATION AND USE OF PRODUCTS MANUFACTURED BY THE SUBSIDIARIES OF USG CORPORATION. THE DRAWINGS ARE INTENDED SOLELY AS TECHNICAL SUPPORT INCIDENT TO THE SALE AND USE OF USG PRODUCTS AND NOT INTENDED TO BE A SUBSTITUTE FOR THE DESIGN REVIEW AND APPROVAL OF THE LICENSED DESIGN PROFESSIONALS FOR THE PROJECT. THESE MATERIALS MAY BE PRINTED AND/OR TRANSFERRED ELECTRONICALLY SOLELY AS NEEDED BY THE USER, BECAUSE CAD/ELECTRONIC FILES AND BIM (BUILDING INFORMATION MODELING) FILES CAN BE MODIFIED BY OTHER PARTIES. WITHOUT NOTICE OR INDICATION OF SUCH MODIFICATIONS, MODIFICATION OF USG PRODUCT CAD AND BIM DRAWINGS IS THE SOLE RESPONSIBILITY OF THE DESIGN PROFESSIONAL. ©2021 USG CORPORATION.



DETAIL NOTES - HEAD OF WALL - J2132

1	USG SHEETROCK X PANELS, REFERENCE UL HW-D-0001 FOR JOINT WIDTH INFORMATION
2	COMPLETELY FILL GAP ABOVE GYPSUM PANELS WITH USG SHEETROCK ACOUSTICAL OR SMOKE-SOUND SEALANT
3	STRUCTURAL SLAB
4	USG SHEETROCK FIRECODE X PANELS, CUT 5/8" MAX. FROM TOP OF PARTITION
5	MIN. 1/2" [12.5] THICK USG SHEETROCK FIRECODE COMPOUND
6	Z-CLIPS
7	STEEL BEAM WITH FIRE PROOFING
8	STEEL PLATE, EXTEND FIRE PROOFING FROM STEEL BEAM ONTO PLATE
9	MINERAL WOOL INSULATION
10	UNDERSIDE OF STRUCTURAL SLAB
11	CONTINUOUS 20-GAUGE ANGLE, FASTEN TO STUDS
12	PERFORATED METAL PLATE, SPAN BETWEEN FLUTES, REFERENCE HW-D-0001 FOR MORE INFORMATION
13	RESTRAINING ANGLE LINED WITH GYPSUM BOARD, MATCHING PARTITION BELOW
14	FASTENERS TO BE SET FLUSH ON DRYWALL SIDE
15	TRACK STUD
16	MIN. 1/2" [13] THICK USG SHEETROCK FIRECODE COMPOUND
17	MINERAL WOOL BATT INSULATION
18	USG SHEETROCK X PANELS, CUT 5/8" FROM UNDERSIDE OF PROTECTED STEEL PLATE
19	MINERAL WOOL FILL MATERIAL
20	CEILING HEAD AND RELIEF TRACK
21	LAP SEALANT 1/2" BELOW TOP OF GYPSUM PANELS (BOTH SIDES)
22	USG SHEETROCK X PANELS, BUTT TIGHT TO UNDERSIDE OF STEEL DECK, THICKNESS PER ARCHITECT
23	USG SHEETROCK X PANELS, CUT 1/2" MAX. FROM TOP OF PARTITION, THICKNESS PER ARCHITECT
24	USG SHEETROCK X PANELS, REFERENCE UL HW-D-0002 FOR JOINT WIDTH INFORMATION
25	USG SHEETROCK FIRECODE X PANELS
26	COMPLETELY FILL GAP ABOVE GYPSUM PANELS WITH USG SHEETROCK ACOUSTICAL OR SMOKE-SOUND SEALANT (BOTH SIDES)
27	STEEL BEAM WITH FIRE PROOFING REFERENCE STRUCTURAL DRAWINGS FOR BEAM SIZE AND FIREPROOFING THICKNESS
28	UNDERSIDE OF COMPOSITE STRUCTURAL SLAB
29	FILL CAVITY WITH MINERAL WOOL
30	CUT DRYWALL SHORT OF STRUCTURAL DECK BY 5/8"



USG Corporation
550 West Adams Street, Chicago, IL 60661
T. 800-USG4YOU www.USG.com

2-HR HEAD OF WALL UL HW-D-0002 PERPENDICULAR TO DECK FLUTES

HEAD OF WALL DETAILS - USG J2132 R1

ISSUE RECORD:
10/04/21

ISSUE: DATE:

SHEET INFORMATION:
SCALE: 3" = 1'-0"

HW-04

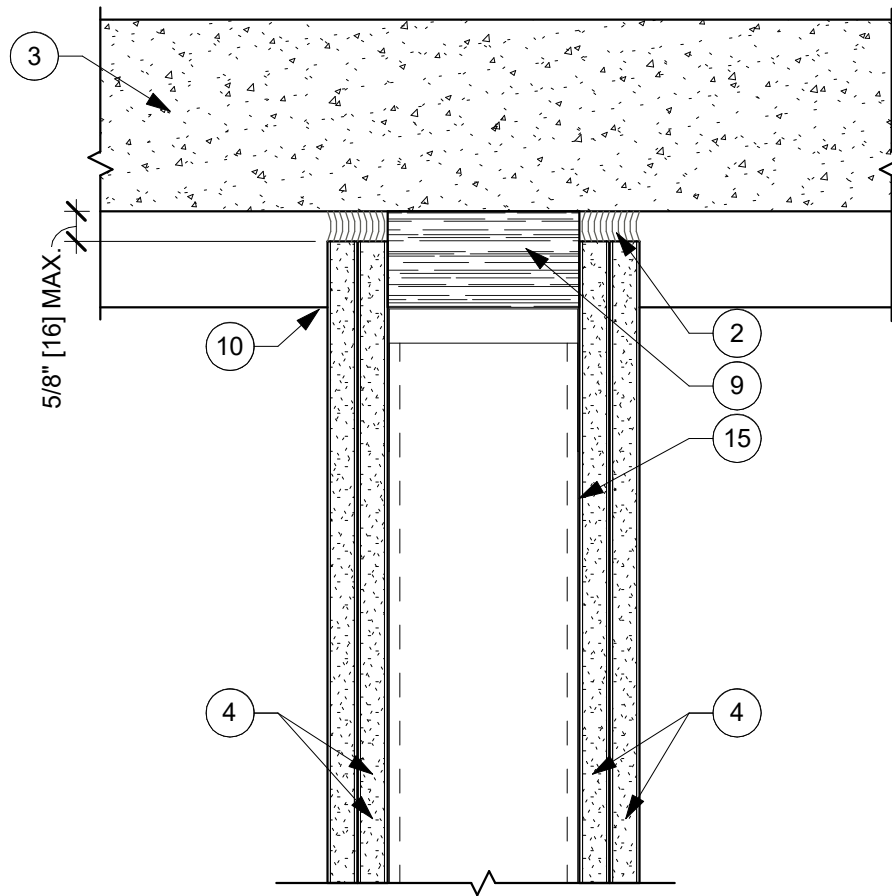
2-HR HEAD OF WALL UL HW-D-0002 PERPENDICULAR
TO DECK FLUTES

DISCLAIMER: THE USG PRODUCT DETAILS CONTAINED HEREIN ARE INTENDED FOR USE AS PRODUCT REFERENCE MATERIAL BY ARCHITECTS, ENGINEERS, OTHER DESIGN PROFESSIONALS, CONTRACTORS, BUILDING CODE OFFICIALS, OR OTHER COMPETENT CONSTRUCTION INDUSTRY TRADE PROFESSIONALS HAVING AN INTEREST IN THE SELECTION, SPECIFICATION AND USE OF PRODUCTS MANUFACTURED BY THE SUBSIDIARIES OF USG CORPORATION. THE DRAWINGS ARE INTENDED SOLELY AS TECHNICAL SUPPORT INCIDENT TO THE SALE AND USE OF USG PRODUCTS AND NOT INTENDED TO BE A SUBSTITUTE FOR THE DESIGN REVIEW AND APPROVAL OF THE LICENSED DESIGN PROFESSIONALS FOR THE PROJECT. THESE MATERIALS MAY BE PRINTED AND/OR TRANSFERRED ELECTRONICALLY SOLELY AS NEEDED BY THE USER, BECAUSE CAD/ELECTRONIC FILES AND BIM (BUILDING INFORMATION MODELING) FILES CAN BE MODIFIED BY OTHER PARTIES, WITHOUT NOTICE OR INDICATION OF SUCH MODIFICATIONS. MODIFICATION OF USG PRODUCT CAD AND BIM DRAWINGS IS THE SOLE RESPONSIBILITY OF THE DESIGN PROFESSIONAL. ©2021 USG CORPORATION.



2-HR HEAD OF WALL UL HW-D-0262 PARALLEL TO
DECK FLUTES

DISCLAIMER: THE USER PRODUCT DETAILS CONTAINED HEREIN ARE INTENDED FOR USE AS PRODUCT REFERENCE MATERIAL ONLY BY ARCHITECTS, ENGINEERS, CONTRACTOR DESIGN PROFESSIONALS, CONTRACTORS, BUILDING CODE OFFICIALS, OR OTHER COMPETENT CONSTRUCTION INDUSTRY TRADE PROFESSIONALS HAVING AN INTEREST IN THE SELECTION, SPECIFICATION AND USE OF PRODUCTS MANUFACTURED BY THE SUBSIDIARIES OF USG CORPORATION. THE DRAWINGS ARE INTENDED SOLELY AS TECHNICAL SUPPORT MATERIAL TO THE SALE AND USE OF USG PRODUCTS AND NOT INTENDED TO BE A BASIS FOR THE DESIGN AND/OR DETAIL OF ANY DESIGN OR CONSTRUCTION PROJECT. THE INFORMATION IS PROVIDED "AS IS" WITHOUT WARRANTY OF ANY KIND, INCLUDING WARRANTIES OF MERCHANTABILITY AND FITNESS FOR A PARTICULAR PURPOSE. THE INFORMATION IS PROVIDED "AS IS" WITHOUT WARRANTY OF ANY KIND, INCLUDING WARRANTIES OF MERCHANTABILITY AND FITNESS FOR A PARTICULAR PURPOSE. THE INFORMATION IS PROVIDED "AS IS" WITHOUT WARRANTY OF ANY KIND, INCLUDING WARRANTIES OF MERCHANTABILITY AND FITNESS FOR A PARTICULAR PURPOSE.



DETAIL NOTES - HEAD OF WALL - J2132

1	USG SHEETROCK X PANELS, REFERENCE UL HW-D-0001 FOR JOINT WIDTH INFORMATION
2	COMPLETELY FILL GAP ABOVE GYPSUM PANELS WITH USG SHEETROCK ACOUSTICAL OR SMOKE-SOUND SEALANT
3	STRUCTURAL SLAB
4	USG SHEETROCK FIRECODE X PANELS, CUT 5/8" MAX. FROM TOP OF PARTITION
5	MIN. 1/2" [12.5] THICK USG SHEETROCK FIRECODE COMPOUND
6	Z-CLIPS
7	STEEL BEAM WITH FIRE PROOFING
8	STEEL PLATE, EXTEND FIRE PROOFING FROM STEEL BEAM ONTO PLATE
9	MINERAL WOOL INSULATION
10	UNDERSIDE OF STRUCTURAL SLAB
11	CONTINUOUS 20-GAUGE ANGLE, FASTEN TO STUDS
12	PERFORATED METAL PLATE, SPAN BETWEEN FLUTES, REFERENCE HW-D-0001 FOR MORE INFORMATION
13	RESTRAINING ANGLE LINED WITH GYPSUM BOARD, MATCHING PARTITION BELOW
14	FASTENERS TO BE SET FLUSH ON DRYWALL SIDE
15	TRACK STUD
16	MIN. 1/2" [13] THICK USG SHEETROCK FIRECODE COMPOUND
17	MINERAL WOOL BATT INSULATION
18	USG SHEETROCK X PANELS, CUT 5/8" FROM UNDERSIDE OF PROTECTED STEEL PLATE
19	MINERAL WOOL FILL MATERIAL
20	CEILING HEAD AND RELIEF TRACK
21	LAP SEALANT 1/2" BELOW TOP OF GYPSUM PANELS (BOTH SIDES)
22	USG SHEETROCK X PANELS, BUTT TIGHT TO UNDERSIDE OF STEEL DECK, THICKNESS PER ARCHITECT
23	USG SHEETROCK X PANELS, CUT 1/2" MAX. FROM TOP OF PARTITION, THICKNESS PER ARCHITECT
24	USG SHEETROCK X PANELS, REFERENCE UL HW-D-0002 FOR JOINT WIDTH INFORMATION
25	USG SHEETROCK FIRECODE X PANELS
26	COMPLETELY FILL GAP ABOVE GYPSUM PANELS WITH USG SHEETROCK ACOUSTICAL OR SMOKE-SOUND SEALANT (BOTH SIDES)
27	STEEL BEAM WITH FIRE PROOFING REFERENCE STRUCTURAL DRAWINGS FOR BEAM SIZE AND FIREPROOFING THICKNESS
28	UNDERSIDE OF COMPOSITE STRUCTURAL SLAB
29	FILL CAVITY WITH MINERAL WOOL
30	CUT DRYWALL SHORT OF STRUCTURAL DECK BY 5/8"



USG Corporation
550 West Adams Street, Chicago, IL 60661
T. 800-USG4YOU www.USG.com

2-HR HEAD OF WALL UL HW-D-0262 PERPENDICULAR TO DECK FLUTES

HEAD OF WALL DETAILS - USG J2132 R1

ISSUE RECORD:
10/04/21

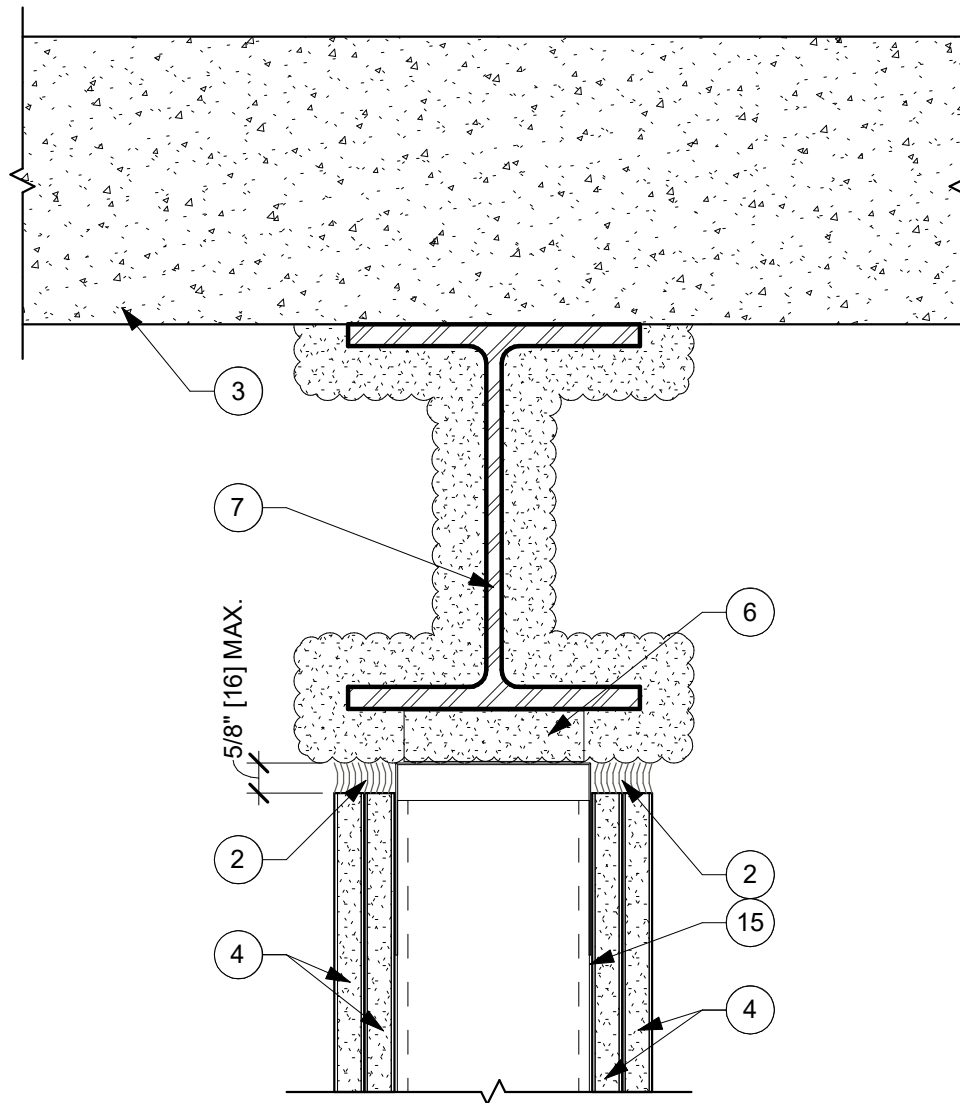
ISSUE: DATE:

SHEET INFORMATION:
SCALE: 3" = 1'-0"

HW-06

2-HR HEAD OF WALL UL HW-D-0262 PERPENDICULAR
TO DECK FLUTES

DISCLAIMER: THE USG PRODUCT DETAILS CONTAINED HEREIN ARE INTENDED FOR USE AS PRODUCT REFERENCE MATERIAL BY ARCHITECTS, ENGINEERS, OTHER DESIGN PROFESSIONALS, CONTRACTORS, BUILDING CODE OFFICIALS, OR OTHER COMPETENT CONSTRUCTION INDUSTRY TRADE PROFESSIONALS HAVING AN INTEREST IN THE SELECTION, SPECIFICATION AND USE OF PRODUCTS MANUFACTURED BY THE SUBSIDIARIES OF USG CORPORATION. THE DRAWINGS ARE INTENDED SOLELY AS TECHNICAL SUPPORT INCIDENT TO THE SALE AND USE OF USG PRODUCTS AND NOT INTENDED TO BE A SUBSTITUTE FOR THE DESIGN REVIEW AND APPROVAL OF THE LICENSED DESIGN PROFESSIONALS FOR THE PROJECT. THESE MATERIALS MAY BE PRINTED AND/OR TRANSFERRED ELECTRONICALLY SOLELY AS NEEDED BY THE USER, BECAUSE CAD/ELECTRONIC FILES AND BIM (BUILDING INFORMATION MODELING) FILES CAN BE MODIFIED BY OTHER PARTIES, WITHOUT NOTICE OR INDICATION OF SUCH MODIFICATIONS, MODIFICATION OF USG PRODUCT CAD AND BIM DRAWINGS IS THE SOLE RESPONSIBILITY OF THE DESIGN PROFESSIONAL. ©2021 USG CORPORATION.



DETAIL NOTES - HEAD OF WALL - J2132

1	USG SHEETROCK X PANELS, REFERENCE UL HW-D-0001 FOR JOINT WIDTH INFORMATION
2	COMPLETELY FILL GAP ABOVE GYPSUM PANELS WITH USG SHEETROCK ACOUSTICAL OR SMOKE-SOUND SEALANT
3	STRUCTURAL SLAB
4	USG SHEETROCK FIRECODE X PANELS, CUT 5/8" MAX. FROM TOP OF PARTITION
5	MIN. 1/2" [12.5] THICK USG SHEETROCK FIRECODE COMPOUND
6	Z-CLIPS
7	STEEL BEAM WITH FIRE PROOFING
8	STEEL PLATE, EXTEND FIRE PROOFING FROM STEEL BEAM ONTO PLATE
9	MINERAL WOOL INSULATION
10	UNDERSIDE OF STRUCTURAL SLAB
11	CONTINUOUS 20-GAUGE ANGLE, FASTEN TO STUDS
12	PERFORATED METAL PLATE, SPAN BETWEEN FLUTES, REFERENCE HW-D-0001 FOR MORE INFORMATION
13	RESTRAINING ANGLE LINED WITH GYPSUM BOARD, MATCHING PARTITION BELOW
14	FASTENERS TO BE SET FLUSH ON DRYWALL SIDE
15	TRACK STUD
16	MIN. 1/2" [13] THICK USG SHEETROCK FIRECODE COMPOUND
17	MINERAL WOOL BATT INSULATION
18	USG SHEETROCK X PANELS, CUT 5/8" FROM UNDERSIDE OF PROTECTED STEEL PLATE
19	MINERAL WOOL FILL MATERIAL
20	CEILING HEAD AND RELIEF TRACK
21	LAP SEALANT 1/2" BELOW TOP OF GYPSUM PANELS (BOTH SIDES)
22	USG SHEETROCK X PANELS, BUTT TIGHT TO UNDERSIDE OF STEEL DECK, THICKNESS PER ARCHITECT
23	USG SHEETROCK X PANELS, CUT 1/2" MAX. FROM TOP OF PARTITION, THICKNESS PER ARCHITECT
24	USG SHEETROCK X PANELS, REFERENCE UL HW-D-0002 FOR JOINT WIDTH INFORMATION
25	USG SHEETROCK FIRECODE X PANELS
26	COMPLETELY FILL GAP ABOVE GYPSUM PANELS WITH USG SHEETROCK ACOUSTICAL OR SMOKE-SOUND SEALANT (BOTH SIDES)
27	STEEL BEAM WITH FIRE PROOFING REFERENCE STRUCTURAL DRAWINGS FOR BEAM SIZE AND FIREPROOFING THICKNESS
28	UNDERSIDE OF COMPOSITE STRUCTURAL SLAB
29	FILL CAVITY WITH MINERAL WOOL
30	CUT DRYWALL SHORT OF STRUCTURAL DECK BY 5/8"



USG Corporation
550 West Adams Street, Chicago, IL 60661
T. 800-USG4YOU www.USG.com

2-HR HEAD OF WALL UL HW-D-0626

HEAD OF WALL DETAILS - USG J2132 R1

ISSUE RECORD:
10/04/21

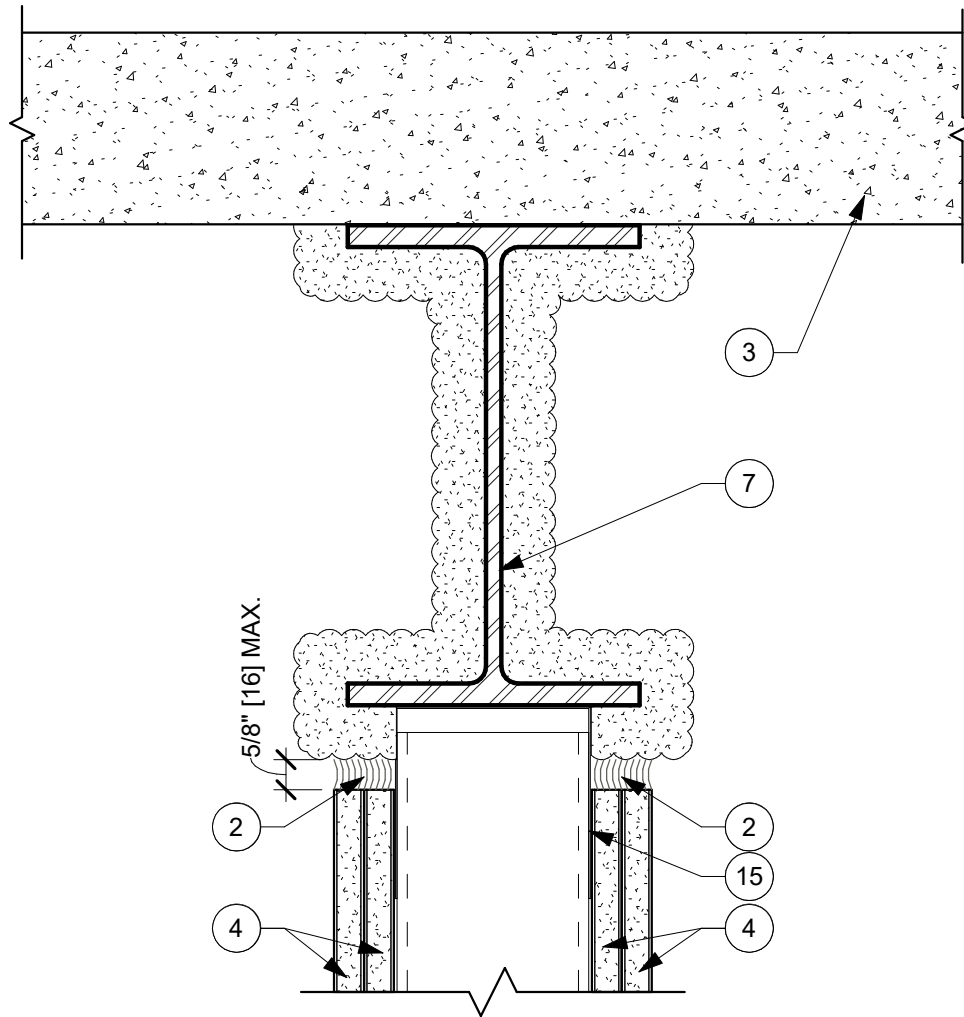
ISSUE: DATE:

SHEET INFORMATION:
SCALE: 3" = 1'-0"

HW-07

2-HR HEAD OF WALL UL HW-D-0626

DISCLAIMER: THE USG PRODUCT DETAILS CONTAINED HEREIN ARE INTENDED FOR USE AS PRODUCT REFERENCE MATERIAL BY ARCHITECTS, ENGINEERS, OTHER DESIGN PROFESSIONALS, CONTRACTORS, BUILDING CODE OFFICIALS, OR OTHER COMPETENT CONSTRUCTION INDUSTRY TRADE PROFESSIONALS HAVING AN INTEREST IN THE SELECTION, SPECIFICATION AND USE OF PRODUCTS MANUFACTURED BY THE SUBSIDIARIES OF USG CORPORATION. THE DRAWINGS ARE INTENDED SOLELY AS TECHNICAL SUPPORT INCIDENT TO THE SALE AND USE OF USG PRODUCTS AND NOT INTENDED TO BE A SUBSTITUTE FOR THE DESIGN REVIEW AND APPROVAL OF THE LICENSED DESIGN PROFESSIONALS FOR THE PROJECT. THESE MATERIALS MAY BE PRINTED AND/OR TRANSFERRED ELECTRONICALLY SOLELY AS NEEDED BY THE USER, BECAUSE CAD/ELECTRONIC FILES AND BIM (BUILDING INFORMATION MODELING) FILES CAN BE MODIFIED BY OTHER PARTIES, WITHOUT NOTICE OR INDICATION OF SUCH MODIFICATIONS, MODIFICATION OF USG PRODUCT CAD AND BIM DRAWINGS IS THE SOLE RESPONSIBILITY OF THE DESIGN PROFESSIONAL. ©2021 USG CORPORATION.



DETAIL NOTES - HEAD OF WALL - J2132

1	USG SHEETROCK X PANELS, REFERENCE UL HW-D-0001 FOR JOINT WIDTH INFORMATION
2	COMPLETELY FILL GAP ABOVE GYPSUM PANELS WITH USG SHEETROCK ACOUSTICAL OR SMOKE-SOUND SEALANT
3	STRUCTURAL SLAB
4	USG SHEETROCK FIRECODE X PANELS, CUT 5/8" MAX. FROM TOP OF PARTITION
5	MIN. 1/2" [12.5] THICK USG SHEETROCK FIRECODE COMPOUND
6	Z-CLIPS
7	STEEL BEAM WITH FIRE PROOFING
8	STEEL PLATE, EXTEND FIRE PROOFING FROM STEEL BEAM ONTO PLATE
9	MINERAL WOOL INSULATION
10	UNDERSIDE OF STRUCTURAL SLAB
11	CONTINUOUS 20-GAUGE ANGLE, FASTEN TO STUDS
12	PERFORATED METAL PLATE, SPAN BETWEEN FLUTES, REFERENCE HW-D-0001 FOR MORE INFORMATION
13	RESTRAINING ANGLE LINED WITH GYPSUM BOARD, MATCHING PARTITION BELOW
14	FASTENERS TO BE SET FLUSH ON DRYWALL SIDE
15	TRACK STUD
16	MIN. 1/2" [13] THICK USG SHEETROCK FIRECODE COMPOUND
17	MINERAL WOOL BATT INSULATION
18	USG SHEETROCK X PANELS, CUT 5/8" FROM UNDERSIDE OF PROTECTED STEEL PLATE
19	MINERAL WOOL FILL MATERIAL
20	CEILING HEAD AND RELIEF TRACK
21	LAP SEALANT 1/2" BELOW TOP OF GYPSUM PANELS (BOTH SIDES)
22	USG SHEETROCK X PANELS, BUTT TIGHT TO UNDERSIDE OF STEEL DECK, THICKNESS PER ARCHITECT
23	USG SHEETROCK X PANELS, CUT 1/2" MAX. FROM TOP OF PARTITION, THICKNESS PER ARCHITECT
24	USG SHEETROCK X PANELS, REFERENCE UL HW-D-0002 FOR JOINT WIDTH INFORMATION
25	USG SHEETROCK FIRECODE X PANELS
26	COMPLETELY FILL GAP ABOVE GYPSUM PANELS WITH USG SHEETROCK ACOUSTICAL OR SMOKE-SOUND SEALANT (BOTH SIDES)
27	STEEL BEAM WITH FIRE PROOFING REFERENCE STRUCTURAL DRAWINGS FOR BEAM SIZE AND FIREPROOFING THICKNESS
28	UNDERSIDE OF COMPOSITE STRUCTURAL SLAB
29	FILL CAVITY WITH MINERAL WOOL
30	CUT DRYWALL SHORT OF STRUCTURAL DECK BY 5/8"



USG Corporation
550 West Adams Street, Chicago, IL 60661
T. 800-USG4YOU www.USG.com

2-HR HEAD OF WALL UL HW-D-0627

HEAD OF WALL DETAILS - USG J2132 R1

ISSUE RECORD:
10/04/21

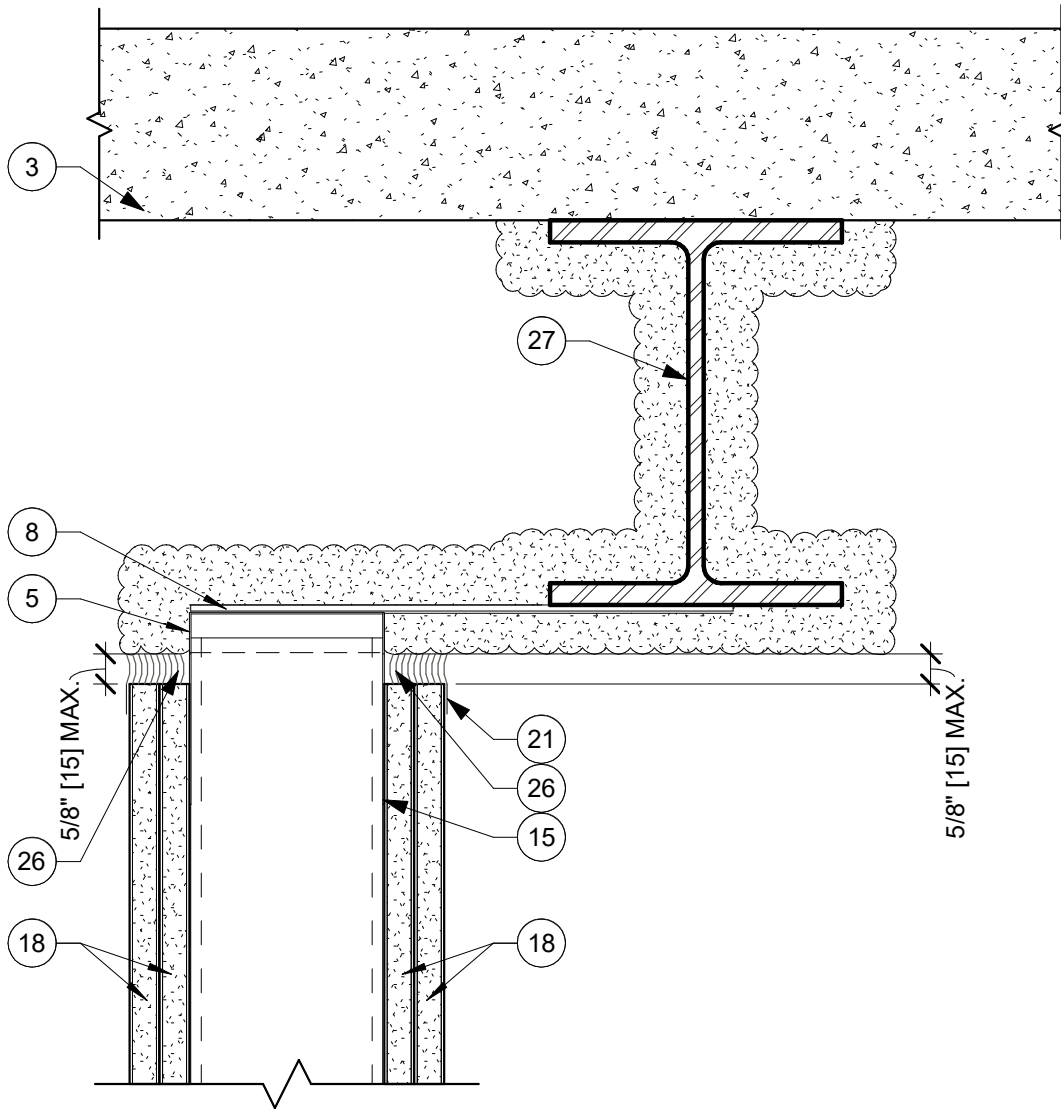
ISSUE: DATE:

SHEET INFORMATION:
SCALE: 3" = 1'-0"

HW-08

2-HR HEAD OF WALL UL HW-D-0627

DISCLAIMER: THE USG PRODUCT DETAILS CONTAINED HEREIN ARE INTENDED FOR USE AS PRODUCT REFERENCE MATERIAL BY ARCHITECTS, ENGINEERS, OTHER DESIGN PROFESSIONALS, CONTRACTORS, BUILDING CODE OFFICIALS, OR OTHER COMPETENT CONSTRUCTION INDUSTRY TRADE PROFESSIONALS HAVING AN INTEREST IN THE SELECTION, SPECIFICATION AND USE OF PRODUCTS MANUFACTURED BY THE SUBSIDIARIES OF USG CORPORATION. THE DRAWINGS ARE INTENDED SOLELY AS TECHNICAL SUPPORT INCIDENT TO THE SALE AND USE OF USG PRODUCTS AND NOT INTENDED TO BE A SUBSTITUTE FOR THE DESIGN REVIEW AND APPROVAL OF THE LICENSED DESIGN PROFESSIONALS FOR THE PROJECT. THESE MATERIALS MAY BE PRINTED AND/OR TRANSFERRED ELECTRONICALLY SOLELY AS NEEDED BY THE USER, BECAUSE CAD/ELECTRONIC FILES AND BIM (BUILDING INFORMATION MODELING) FILES CAN BE MODIFIED BY OTHER PARTIES, WITHOUT NOTICE OR INDICATION OF SUCH MODIFICATIONS, MODIFICATION OF USG PRODUCT CAD AND BIM DRAWINGS IS THE SOLE RESPONSIBILITY OF THE DESIGN PROFESSIONAL. ©2021 USG CORPORATION.



DETAIL NOTES - HEAD OF WALL - J2132

1	USG SHEETROCK X PANELS, REFERENCE UL HW-D-0001 FOR JOINT WIDTH INFORMATION
2	COMPLETELY FILL GAP ABOVE GYPSUM PANELS WITH USG SHEETROCK ACOUSTICAL OR SMOKE-SOUND SEALANT
3	STRUCTURAL SLAB
4	USG SHEETROCK FIRECODE X PANELS, CUT 5/8" MAX. FROM TOP OF PARTITION
5	MIN. 1/2" [12.5] THICK USG SHEETROCK FIRECODE COMPOUND
6	Z-CLIPS
7	STEEL BEAM WITH FIRE PROOFING
8	STEEL PLATE, EXTEND FIRE PROOFING FROM STEEL BEAM ONTO PLATE
9	MINERAL WOOL INSULATION
10	UNDERSIDE OF STRUCTURAL SLAB
11	CONTINUOUS 20-GAUGE ANGLE, FASTEN TO STUDS
12	PERFORATED METAL PLATE, SPAN BETWEEN FLUTES, REFERENCE HW-D-0001 FOR MORE INFORMATION
13	RESTRAINING ANGLE LINED WITH GYPSUM BOARD, MATCHING PARTITION BELOW
14	FASTENERS TO BE SET FLUSH ON DRYWALL SIDE
15	TRACK STUD
16	MIN. 1/2" [13] THICK USG SHEETROCK FIRECODE COMPOUND
17	MINERAL WOOL BATT INSULATION
18	USG SHEETROCK X PANELS, CUT 5/8" FROM UNDERSIDE OF PROTECTED STEEL PLATE
19	MINERAL WOOL FILL MATERIAL
20	CEILING HEAD AND RELIEF TRACK
21	LAP SEALANT 1/2" BELOW TOP OF GYPSUM PANELS (BOTH SIDES)
22	USG SHEETROCK X PANELS, BUTT TIGHT TO UNDERSIDE OF STEEL DECK, THICKNESS PER ARCHITECT
23	USG SHEETROCK X PANELS, CUT 1/2" MAX. FROM TOP OF PARTITION, THICKNESS PER ARCHITECT
24	USG SHEETROCK X PANELS, REFERENCE UL HW-D-0002 FOR JOINT WIDTH INFORMATION
25	USG SHEETROCK FIRECODE X PANELS
26	COMPLETELY FILL GAP ABOVE GYPSUM PANELS WITH USG SHEETROCK ACOUSTICAL OR SMOKE-SOUND SEALANT (BOTH SIDES)
27	STEEL BEAM WITH FIRE PROOFING REFERENCE STRUCTURAL DRAWINGS FOR BEAM SIZE AND FIREPROOFING THICKNESS
28	UNDERSIDE OF COMPOSITE STRUCTURAL SLAB
29	FILL CAVITY WITH MINERAL WOOL
30	CUT DRYWALL SHORT OF STRUCTURAL DECK BY 5/8"



USG Corporation
550 West Adams Street, Chicago, IL 60661
T. 800-USG4YOU www.USG.com

2-HR HEAD OF WALL UL HW-D-0628

HEAD OF WALL DETAILS - USG J2132 R1

ISSUE RECORD:
10/04/21

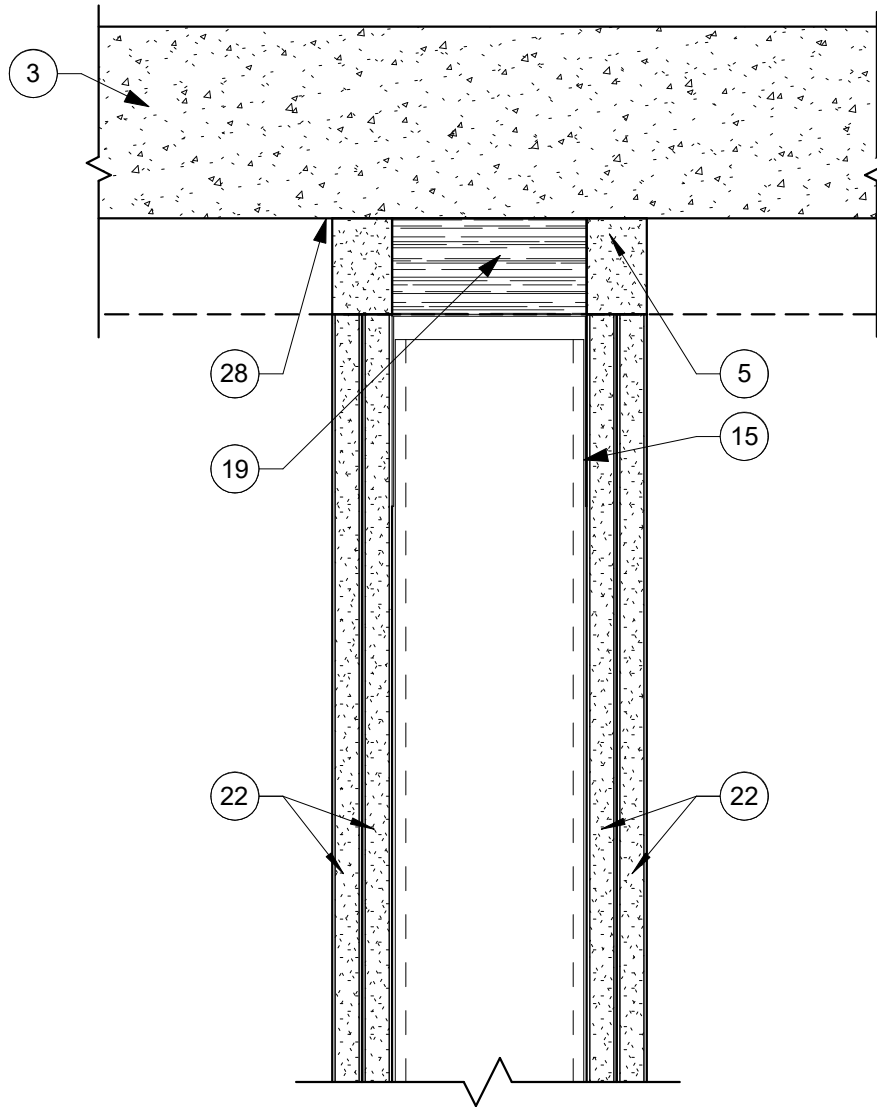
ISSUE: DATE:

SHEET INFORMATION:
SCALE: 3" = 1'-0"

HW-09

2-HR HEAD OF WALL UL HW-D-0628

DISCLAIMER: THE USG PRODUCT DETAILS CONTAINED HEREIN ARE INTENDED FOR USE AS PRODUCT REFERENCE MATERIAL BY ARCHITECTS, ENGINEERS, OTHER DESIGN PROFESSIONALS, CONTRACTORS, BUILDING CODE OFFICIALS, OR OTHER COMPETENT CONSTRUCTION INDUSTRY TRADE PROFESSIONALS HAVING AN INTEREST IN THE SELECTION, SPECIFICATION AND USE OF PRODUCTS MANUFACTURED BY THE SUBSIDIARIES OF USG CORPORATION. THE DRAWINGS ARE INTENDED SOLELY AS TECHNICAL SUPPORT INCIDENT TO THE SALE AND USE OF USG PRODUCTS AND NOT INTENDED TO BE A SUBSTITUTE FOR THE DESIGN REVIEW AND APPROVAL OF THE LICENSED DESIGN PROFESSIONALS FOR THE PROJECT. THESE MATERIALS MAY BE PRINTED AND/OR TRANSFERRED ELECTRONICALLY SOLELY AS NEEDED BY THE USER, BECAUSE CAD ELECTRONIC FILES AND BIM (BUILDING INFORMATION MODELING) FILES CAN BE MODIFIED BY OTHER PARTIES, WITHOUT NOTICE OR INDICATION OF SUCH MODIFICATIONS, MODIFICATION OF USG PRODUCT CAD AND BIM DRAWINGS IS THE SOLE RESPONSIBILITY OF THE DESIGN PROFESSIONAL. ©2021 USG CORPORATION.



DETAIL NOTES - HEAD OF WALL - J2132

1	USG SHEETROCK X PANELS, REFERENCE UL HW-D-0001 FOR JOINT WIDTH INFORMATION
2	COMPLETELY FILL GAP ABOVE GYPSUM PANELS WITH USG SHEETROCK ACOUSTICAL OR SMOKE-SOUND SEALANT
3	STRUCTURAL SLAB
4	USG SHEETROCK FIRECODE X PANELS, CUT 5/8" MAX. FROM TOP OF PARTITION
5	MIN. 1/2" [12.5] THICK USG SHEETROCK FIRECODE COMPOUND
6	Z-CLIPS
7	STEEL BEAM WITH FIRE PROOFING
8	STEEL PLATE, EXTEND FIRE PROOFING FROM STEEL BEAM ONTO PLATE
9	MINERAL WOOL INSULATION
10	UNDERSIDE OF STRUCTURAL SLAB
11	CONTINUOUS 20-GAUGE ANGLE, FASTEN TO STUDS
12	PERFORATED METAL PLATE, SPAN BETWEEN FLUTES, REFERENCE HW-D-0001 FOR MORE INFORMATION
13	RESTRAINING ANGLE LINED WITH GYPSUM BOARD, MATCHING PARTITION BELOW
14	FASTENERS TO BE SET FLUSH ON DRYWALL SIDE
15	TRACK STUD
16	MIN. 1/2" [13] THICK USG SHEETROCK FIRECODE COMPOUND
17	MINERAL WOOL BATT INSULATION
18	USG SHEETROCK X PANELS, CUT 5/8" FROM UNDERSIDE OF PROTECTED STEEL PLATE
19	MINERAL WOOL FILL MATERIAL
20	CEILING HEAD AND RELIEF TRACK
21	LAP SEALANT 1/2" BELOW TOP OF GYPSUM PANELS (BOTH SIDES)
22	USG SHEETROCK X PANELS, BUTT TIGHT TO UNDERSIDE OF STEEL DECK, THICKNESS PER ARCHITECT
23	USG SHEETROCK X PANELS, CUT 1/2" MAX. FROM TOP OF PARTITION, THICKNESS PER ARCHITECT
24	USG SHEETROCK X PANELS, REFERENCE UL HW-D-0002 FOR JOINT WIDTH INFORMATION
25	USG SHEETROCK FIRECODE X PANELS
26	COMPLETELY FILL GAP ABOVE GYPSUM PANELS WITH USG SHEETROCK ACOUSTICAL OR SMOKE-SOUND SEALANT (BOTH SIDES)
27	STEEL BEAM WITH FIRE PROOFING REFERENCE STRUCTURAL DRAWINGS FOR BEAM SIZE AND FIREPROOFING THICKNESS
28	UNDERSIDE OF COMPOSITE STRUCTURAL SLAB
29	FILL CAVITY WITH MINERAL WOOL
30	CUT DRYWALL SHORT OF STRUCTURAL DECK BY 5/8"



USG Corporation
550 West Adams Street, Chicago, IL 60661
T. 800-USG4YOU www.USG.com

2-HR HEAD OF WALL UL HW-S-0001

HEAD OF WALL DETAILS - USG J2132 R1

ISSUE RECORD:
10/04/21

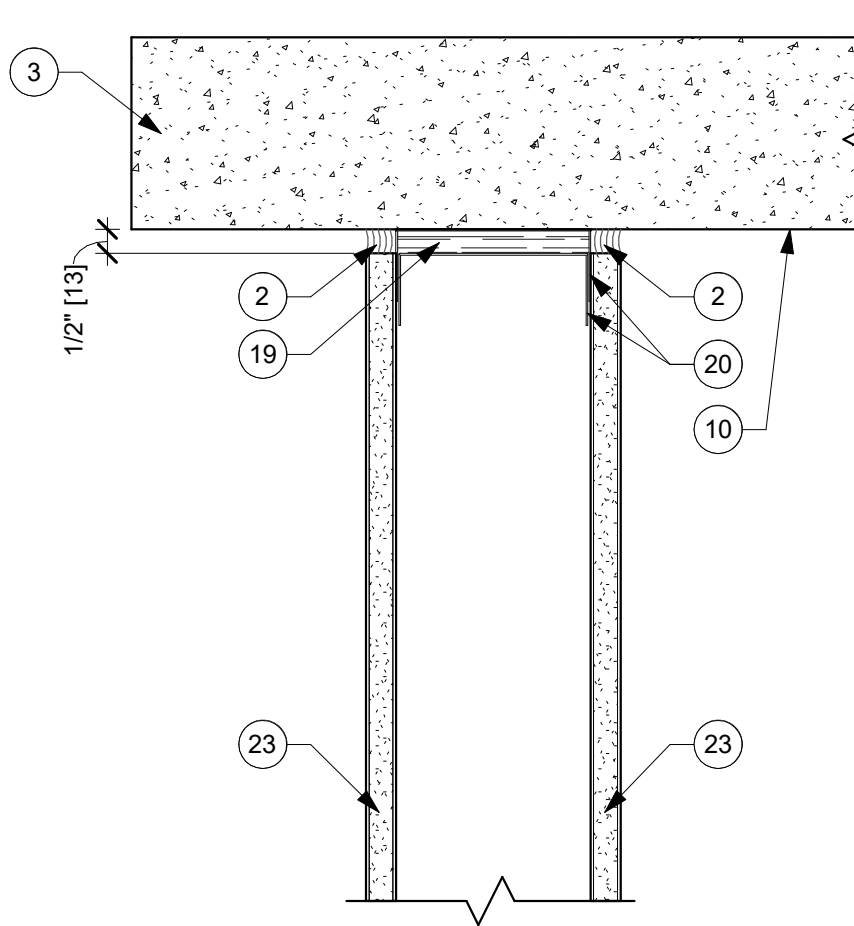
ISSUE: DATE:

SHEET INFORMATION:
SCALE: 3" = 1'-0"

HW-10

2-HR HEAD OF WALL UL HW-S-0001

DISCLAIMER: THE USG PRODUCT DETAILS CONTAINED HEREIN ARE INTENDED FOR USE AS PRODUCT REFERENCE MATERIAL BY ARCHITECTS, ENGINEERS, OTHER DESIGN PROFESSIONALS, CONTRACTORS, BUILDING CODE OFFICIALS, OR OTHER COMPETENT CONSTRUCTION INDUSTRY TRADE PROFESSIONALS HAVING AN INTEREST IN THE SELECTION, SPECIFICATION AND USE OF PRODUCTS MANUFACTURED BY THE SUBSIDIARIES OF USG CORPORATION. THE DRAWINGS ARE INTENDED SOLELY AS TECHNICAL SUPPORT INCIDENT TO THE SALE AND USE OF USG PRODUCTS AND NOT INTENDED TO BE A SUBSTITUTE FOR THE DESIGN REVIEW AND APPROVAL OF THE LICENSED DESIGN PROFESSIONALS FOR THE PROJECT. THESE MATERIALS MAY BE PRINTED AND/OR TRANSFERRED ELECTRONICALLY SOLELY AS NEEDED BY THE USER, BECAUSE CAD/ELECTRONIC FILES AND BIM (BUILDING INFORMATION MODELING) FILES CAN BE MODIFIED BY OTHER PARTIES, WITHOUT NOTICE OR INDICATION OF SUCH MODIFICATIONS, MODIFICATION OF USG PRODUCT CAD AND BIM DRAWINGS IS THE SOLE RESPONSIBILITY OF THE DESIGN PROFESSIONAL. ©2021 USG CORPORATION.



DETAIL NOTES - HEAD OF WALL - J2132

1	USG SHEETROCK X PANELS, REFERENCE UL HW-D-0001 FOR JOINT WIDTH INFORMATION
2	COMPLETELY FILL GAP ABOVE GYPSUM PANELS WITH USG SHEETROCK ACOUSTICAL OR SMOKE-SOUND SEALANT
3	STRUCTURAL SLAB
4	USG SHEETROCK FIRECODE X PANELS, CUT 5/8" MAX. FROM TOP OF PARTITION
5	MIN. 1/2" [12.5] THICK USG SHEETROCK FIRECODE COMPOUND
6	Z-CLIPS
7	STEEL BEAM WITH FIRE PROOFING
8	STEEL PLATE, EXTEND FIRE PROOFING FROM STEEL BEAM ONTO PLATE
9	MINERAL WOOL INSULATION
10	UNDERSIDE OF STRUCTURAL SLAB
11	CONTINUOUS 20-GAUGE ANGLE, FASTEN TO STUDS
12	PERFORATED METAL PLATE, SPAN BETWEEN FLUTES, REFERENCE HW-D-0001 FOR MORE INFORMATION
13	RESTRAINING ANGLE LINED WITH GYPSUM BOARD, MATCHING PARTITION BELOW
14	FASTENERS TO BE SET FLUSH ON DRYWALL SIDE
15	TRACK STUD
16	MIN. 1/2" [13] THICK USG SHEETROCK FIRECODE COMPOUND
17	MINERAL WOOL BATT INSULATION
18	USG SHEETROCK X PANELS, CUT 5/8" FROM UNDERSIDE OF PROTECTED STEEL PLATE
19	MINERAL WOOL FILL MATERIAL
20	CEILING HEAD AND RELIEF TRACK
21	LAP SEALANT 1/2" BELOW TOP OF GYPSUM PANELS (BOTH SIDES)
22	USG SHEETROCK X PANELS, BUTT TIGHT TO UNDERSIDE OF STEEL DECK, THICKNESS PER ARCHITECT
23	USG SHEETROCK X PANELS, CUT 1/2" MAX. FROM TOP OF PARTITION, THICKNESS PER ARCHITECT
24	USG SHEETROCK X PANELS, REFERENCE UL HW-D-0002 FOR JOINT WIDTH INFORMATION
25	USG SHEETROCK FIRECODE X PANELS
26	COMPLETELY FILL GAP ABOVE GYPSUM PANELS WITH USG SHEETROCK ACOUSTICAL OR SMOKE-SOUND SEALANT (BOTH SIDES)
27	STEEL BEAM WITH FIRE PROOFING REFERENCE STRUCTURAL DRAWINGS FOR BEAM SIZE AND FIREPROOFING THICKNESS
28	UNDERSIDE OF COMPOSITE STRUCTURAL SLAB
29	FILL CAVITY WITH MINERAL WOOL
30	CUT DRYWALL SHORT OF STRUCTURAL DECK BY 5/8"



USG Corporation
550 West Adams Street, Chicago, IL 60661
T. 800-USG4YOU www.USG.com

1-HR HEAD OF WALL UL HW-S-0009

HEAD OF WALL DETAILS - USG J2132 R1

ISSUE RECORD:
10/04/21

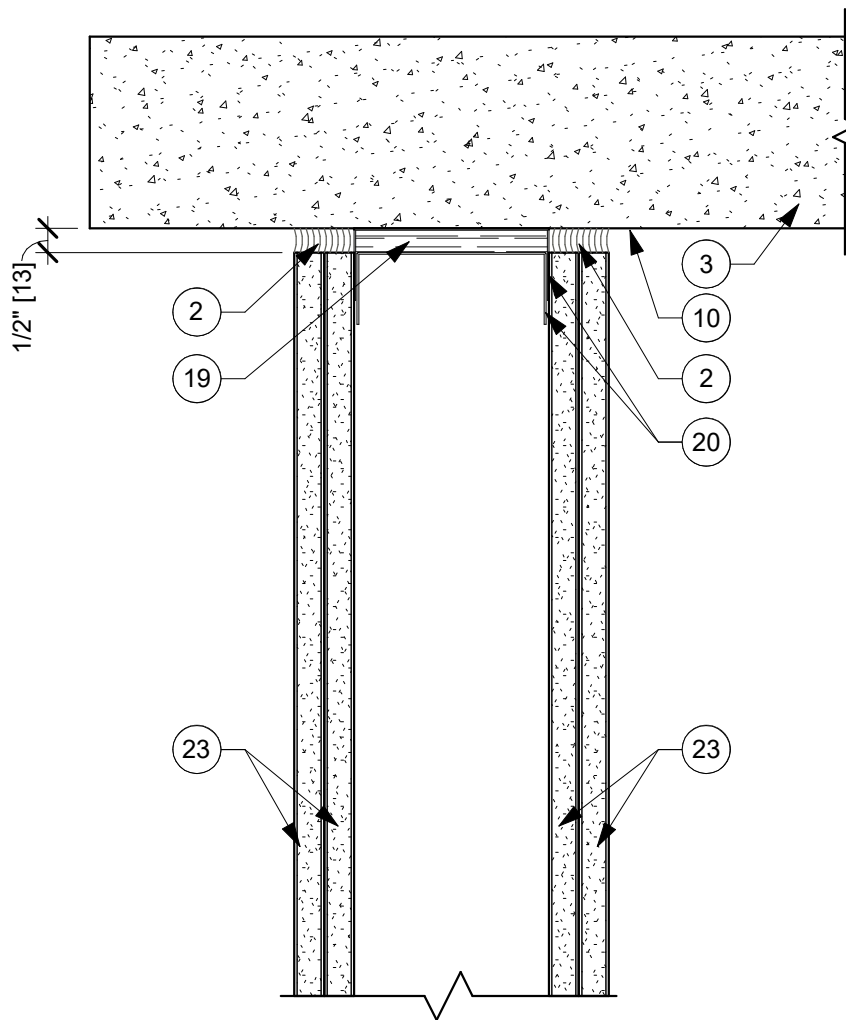
ISSUE: DATE:

SHEET INFORMATION:
SCALE: 3" = 1'-0"

HW-11

1-HR HEAD OF WALL UL HW-S-0009

DISCLAIMER: THE USG PRODUCT DETAILS CONTAINED HEREIN ARE INTENDED FOR USE AS PRODUCT REFERENCE MATERIAL BY ARCHITECTS, ENGINEERS, OTHER DESIGN PROFESSIONALS, CONTRACTORS, BUILDING CODE OFFICIALS, OR OTHER COMPETENT CONSTRUCTION INDUSTRY TRADE PROFESSIONALS HAVING AN INTEREST IN THE SELECTION, SPECIFICATION AND USE OF PRODUCTS MANUFACTURED BY THE SUBSIDIARIES OF USG CORPORATION. THE DRAWINGS ARE INTENDED SOLELY AS TECHNICAL SUPPORT INCIDENT TO THE SALE AND USE OF USG PRODUCTS AND NOT INTENDED TO BE A SUBSTITUTE FOR THE DESIGN REVIEW AND APPROVAL OF THE LICENSED DESIGN PROFESSIONALS FOR THE PROJECT. THESE MATERIALS MAY BE PRINTED AND/OR TRANSFERRED ELECTRONICALLY SOLELY AS NEEDED BY THE USER, BECAUSE CAD ELECTRONIC FILES AND BIM (BUILDING INFORMATION MODELING) FILES CAN BE MODIFIED BY OTHER PARTIES, WITHOUT NOTICE OR INDICATION OF SUCH MODIFICATIONS, MODIFICATION OF USG PRODUCT CAD AND BIM DRAWINGS IS THE SOLE RESPONSIBILITY OF THE DESIGN PROFESSIONAL. ©2021 USG CORPORATION.



DETAIL NOTES - HEAD OF WALL - J2132

1	USG SHEETROCK X PANELS, REFERENCE UL HW-D-0001 FOR JOINT WIDTH INFORMATION
2	COMPLETELY FILL GAP ABOVE GYPSUM PANELS WITH USG SHEETROCK ACOUSTICAL OR SMOKE-SOUND SEALANT
3	STRUCTURAL SLAB
4	USG SHEETROCK FIRECODE X PANELS, CUT 5/8" MAX. FROM TOP OF PARTITION
5	MIN. 1/2" [12.5] THICK USG SHEETROCK FIRECODE COMPOUND
6	Z-CLIPS
7	STEEL BEAM WITH FIRE PROOFING
8	STEEL PLATE, EXTEND FIRE PROOFING FROM STEEL BEAM ONTO PLATE
9	MINERAL WOOL INSULATION
10	UNDERSIDE OF STRUCTURAL SLAB
11	CONTINUOUS 20-GAUGE ANGLE, FASTEN TO STUDS
12	PERFORATED METAL PLATE, SPAN BETWEEN FLUTES, REFERENCE HW-D-0001 FOR MORE INFORMATION
13	RESTRAINING ANGLE LINED WITH GYPSUM BOARD, MATCHING PARTITION BELOW
14	FASTENERS TO BE SET FLUSH ON DRYWALL SIDE
15	TRACK STUD
16	MIN. 1/2" [13] THICK USG SHEETROCK FIRECODE COMPOUND
17	MINERAL WOOL BATT INSULATION
18	USG SHEETROCK X PANELS, CUT 5/8" FROM UNDERSIDE OF PROTECTED STEEL PLATE
19	MINERAL WOOL FILL MATERIAL
20	CEILING HEAD AND RELIEF TRACK
21	LAP SEALANT 1/2" BELOW TOP OF GYPSUM PANELS (BOTH SIDES)
22	USG SHEETROCK X PANELS, BUTT TIGHT TO UNDERSIDE OF STEEL DECK, THICKNESS PER ARCHITECT
23	USG SHEETROCK X PANELS, CUT 1/2" MAX. FROM TOP OF PARTITION, THICKNESS PER ARCHITECT
24	USG SHEETROCK X PANELS, REFERENCE UL HW-D-0002 FOR JOINT WIDTH INFORMATION
25	USG SHEETROCK FIRECODE X PANELS
26	COMPLETELY FILL GAP ABOVE GYPSUM PANELS WITH USG SHEETROCK ACOUSTICAL OR SMOKE-SOUND SEALANT (BOTH SIDES)
27	STEEL BEAM WITH FIRE PROOFING REFERENCE STRUCTURAL DRAWINGS FOR BEAM SIZE AND FIREPROOFING THICKNESS
28	UNDERSIDE OF COMPOSITE STRUCTURAL SLAB
29	FILL CAVITY WITH MINERAL WOOL
30	CUT DRYWALL SHORT OF STRUCTURAL DECK BY 5/8"



USG Corporation
550 West Adams Street, Chicago, IL 60661
T. 800-USG4YOU www.USG.com

2-HR HEAD OF WALL UL HW-S-0010

HEAD OF WALL DETAILS - USG J2132 R1

ISSUE RECORD:
10/04/21

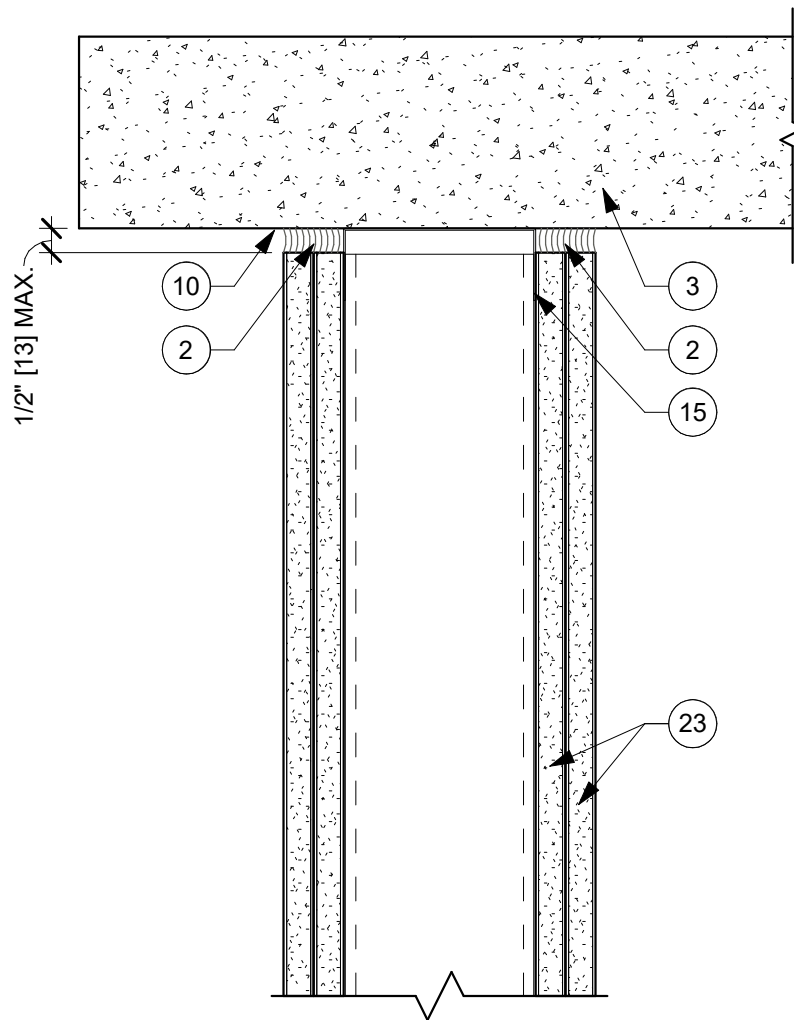
ISSUE: DATE:

SHEET INFORMATION:
SCALE: 3" = 1'-0"

HW-12

2-HR HEAD OF WALL UL HW-S-0010

DISCLAIMER: THE USG PRODUCT DETAILS CONTAINED HEREIN ARE INTENDED FOR USE AS PRODUCT REFERENCE MATERIAL BY ARCHITECTS, ENGINEERS, OTHER DESIGN PROFESSIONALS, CONTRACTORS, BUILDING CODE OFFICIALS, OR OTHER COMPETENT CONSTRUCTION INDUSTRY TRADE PROFESSIONALS HAVING AN INTEREST IN THE SELECTION, SPECIFICATION AND USE OF PRODUCTS MANUFACTURED BY THE SUBSIDIARIES OF USG CORPORATION. THE DRAWINGS ARE INTENDED SOLELY AS TECHNICAL SUPPORT INCIDENT TO THE SALE AND USE OF USG PRODUCTS AND NOT INTENDED TO BE A SUBSTITUTE FOR THE DESIGN REVIEW AND APPROVAL OF THE LICENSED DESIGN PROFESSIONALS FOR THE PROJECT. THESE MATERIALS MAY BE PRINTED AND/OR TRANSFERRED ELECTRONICALLY SOLELY AS NEEDED BY THE USER, BECAUSE CAD ELECTRONIC FILES AND BIM (BUILDING INFORMATION MODELING) FILES CAN BE MODIFIED BY OTHER PARTIES, WITHOUT NOTICE OR INDICATION OF SUCH MODIFICATIONS, MODIFICATION OF USG PRODUCT CAD AND BIM DRAWINGS IS THE SOLE RESPONSIBILITY OF THE DESIGN PROFESSIONAL. ©2021 USG CORPORATION.



DETAIL NOTES - HEAD OF WALL - J2132

1	USG SHEETROCK X PANELS, REFERENCE UL HW-D-0001 FOR JOINT WIDTH INFORMATION
2	COMPLETELY FILL GAP ABOVE GYPSUM PANELS WITH USG SHEETROCK ACOUSTICAL OR SMOKE-SOUND SEALANT
3	STRUCTURAL SLAB
4	USG SHEETROCK FIRECODE X PANELS, CUT 5/8" MAX. FROM TOP OF PARTITION
5	MIN. 1/2" [12.5] THICK USG SHEETROCK FIRECODE COMPOUND
6	Z-CLIPS
7	STEEL BEAM WITH FIRE PROOFING
8	STEEL PLATE, EXTEND FIRE PROOFING FROM STEEL BEAM ONTO PLATE
9	MINERAL WOOL INSULATION
10	UNDERSIDE OF STRUCTURAL SLAB
11	CONTINUOUS 20-GAUGE ANGLE, FASTEN TO STUDS
12	PERFORATED METAL PLATE, SPAN BETWEEN FLUTES, REFERENCE HW-D-0001 FOR MORE INFORMATION
13	RESTRAINING ANGLE LINED WITH GYPSUM BOARD, MATCHING PARTITION BELOW
14	FASTENERS TO BE SET FLUSH ON DRYWALL SIDE
15	TRACK STUD
16	MIN. 1/2" [13] THICK USG SHEETROCK FIRECODE COMPOUND
17	MINERAL WOOL BATT INSULATION
18	USG SHEETROCK X PANELS, CUT 5/8" FROM UNDERSIDE OF PROTECTED STEEL PLATE
19	MINERAL WOOL FILL MATERIAL
20	CEILING HEAD AND RELIEF TRACK
21	LAP SEALANT 1/2" BELOW TOP OF GYPSUM PANELS (BOTH SIDES)
22	USG SHEETROCK X PANELS, BUTT TIGHT TO UNDERSIDE OF STEEL DECK, THICKNESS PER ARCHITECT
23	USG SHEETROCK X PANELS, CUT 1/2" MAX. FROM TOP OF PARTITION, THICKNESS PER ARCHITECT
24	USG SHEETROCK X PANELS, REFERENCE UL HW-D-0002 FOR JOINT WIDTH INFORMATION
25	USG SHEETROCK FIRECODE X PANELS
26	COMPLETELY FILL GAP ABOVE GYPSUM PANELS WITH USG SHEETROCK ACOUSTICAL OR SMOKE-SOUND SEALANT (BOTH SIDES)
27	STEEL BEAM WITH FIRE PROOFING REFERENCE STRUCTURAL DRAWINGS FOR BEAM SIZE AND FIREPROOFING THICKNESS
28	UNDERSIDE OF COMPOSITE STRUCTURAL SLAB
29	FILL CAVITY WITH MINERAL WOOL
30	CUT DRYWALL SHORT OF STRUCTURAL DECK BY 5/8"



USG Corporation
550 West Adams Street, Chicago, IL 60661
T. 800-USG4YOU www.USG.com

2-HR HEAD OF WALL UL HW-S-0032

HEAD OF WALL DETAILS - USG J2132 R1

ISSUE RECORD:
10/04/21

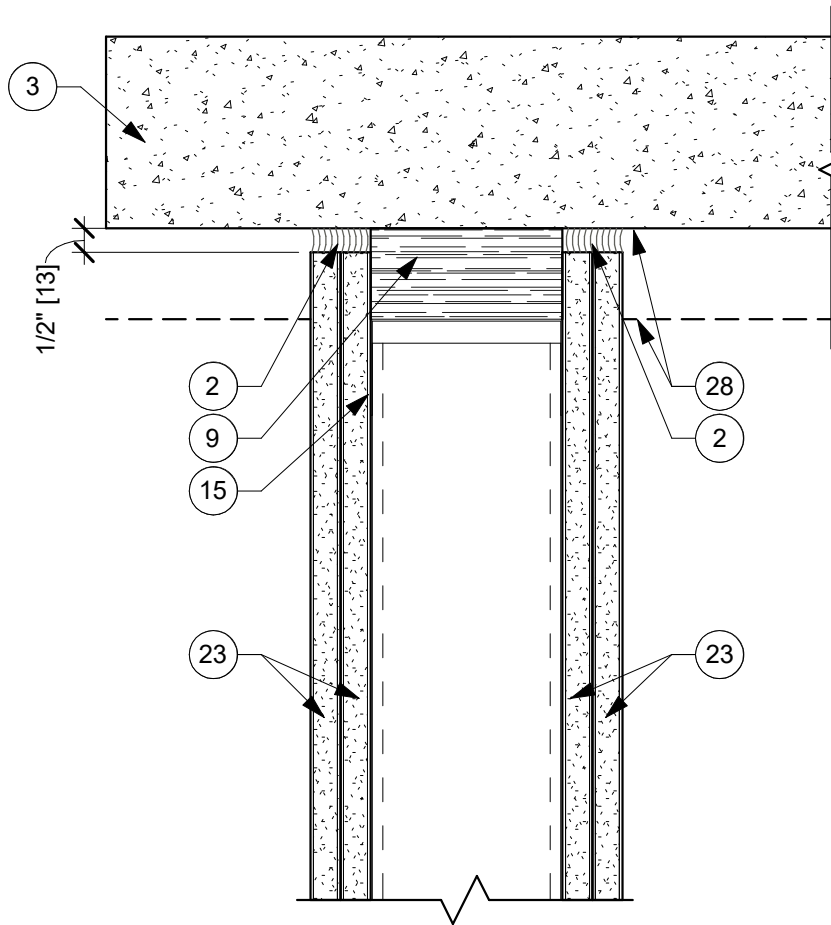
ISSUE: DATE:

SHEET INFORMATION:
SCALE: 3" = 1'-0"

HW-13

2-HR HEAD OF WALL UL HW-S-0032

DISCLAIMER: THE USG PRODUCT DETAILS CONTAINED HEREIN ARE INTENDED FOR USE AS PRODUCT REFERENCE MATERIAL BY ARCHITECTS, ENGINEERS, OTHER DESIGN PROFESSIONALS, CONTRACTORS, BUILDING CODE OFFICIALS, OR OTHER COMPETENT CONSTRUCTION INDUSTRY TRADE PROFESSIONALS HAVING AN INTEREST IN THE SELECTION, SPECIFICATION AND USE OF PRODUCTS MANUFACTURED BY THE SUBSIDIARIES OF USG CORPORATION. THE DRAWINGS ARE INTENDED SOLELY AS TECHNICAL SUPPORT INCIDENT TO THE SALE AND USE OF USG PRODUCTS AND NOT INTENDED TO BE A SUBSTITUTE FOR THE DESIGN REVIEW AND APPROVAL OF THE LICENSED DESIGN PROFESSIONALS FOR THE PROJECT. THESE MATERIALS MAY BE PRINTED AND/OR TRANSFERRED ELECTRONICALLY SOLELY AS NEEDED BY THE USER, BECAUSE CAD ELECTRONIC FILES AND BIM (BUILDING INFORMATION MODELING) FILES CAN BE MODIFIED BY OTHER PARTIES, WITHOUT NOTICE OR INDICATION OF SUCH MODIFICATIONS, MODIFICATION OF USG PRODUCT CAD AND BIM DRAWINGS IS THE SOLE RESPONSIBILITY OF THE DESIGN PROFESSIONAL. ©2021 USG CORPORATION.



DETAIL NOTES - HEAD OF WALL - J2132

1	USG SHEETROCK X PANELS, REFERENCE UL HW-D-0001 FOR JOINT WIDTH INFORMATION
2	COMPLETELY FILL GAP ABOVE GYPSUM PANELS WITH USG SHEETROCK ACOUSTICAL OR SMOKE-SOUND SEALANT
3	STRUCTURAL SLAB
4	USG SHEETROCK FIRECODE X PANELS, CUT 5/8" MAX. FROM TOP OF PARTITION
5	MIN. 1/2" [12.5] THICK USG SHEETROCK FIRECODE COMPOUND
6	Z-CLIPS
7	STEEL BEAM WITH FIRE PROOFING
8	STEEL PLATE, EXTEND FIRE PROOFING FROM STEEL BEAM ONTO PLATE
9	MINERAL WOOL INSULATION
10	UNDERSIDE OF STRUCTURAL SLAB
11	CONTINUOUS 20-GAUGE ANGLE, FASTEN TO STUDS
12	PERFORATED METAL PLATE, SPAN BETWEEN FLUTES, REFERENCE HW-D-0001 FOR MORE INFORMATION
13	RESTRAINING ANGLE LINED WITH GYPSUM BOARD, MATCHING PARTITION BELOW
14	FASTENERS TO BE SET FLUSH ON DRYWALL SIDE
15	TRACK STUD
16	MIN. 1/2" [13] THICK USG SHEETROCK FIRECODE COMPOUND
17	MINERAL WOOL BATT INSULATION
18	USG SHEETROCK X PANELS, CUT 5/8" FROM UNDERSIDE OF PROTECTED STEEL PLATE
19	MINERAL WOOL FILL MATERIAL
20	CEILING HEAD AND RELIEF TRACK
21	LAP SEALANT 1/2" BELOW TOP OF GYPSUM PANELS (BOTH SIDES)
22	USG SHEETROCK X PANELS, BUTT TIGHT TO UNDERSIDE OF STEEL DECK, THICKNESS PER ARCHITECT
23	USG SHEETROCK X PANELS, CUT 1/2" MAX. FROM TOP OF PARTITION, THICKNESS PER ARCHITECT
24	USG SHEETROCK X PANELS, REFERENCE UL HW-D-0002 FOR JOINT WIDTH INFORMATION
25	USG SHEETROCK FIRECODE X PANELS
26	COMPLETELY FILL GAP ABOVE GYPSUM PANELS WITH USG SHEETROCK ACOUSTICAL OR SMOKE-SOUND SEALANT (BOTH SIDES)
27	STEEL BEAM WITH FIRE PROOFING REFERENCE STRUCTURAL DRAWINGS FOR BEAM SIZE AND FIREPROOFING THICKNESS
28	UNDERSIDE OF COMPOSITE STRUCTURAL SLAB
29	FILL CAVITY WITH MINERAL WOOL
30	CUT DRYWALL SHORT OF STRUCTURAL DECK BY 5/8"



USG Corporation
550 West Adams Street, Chicago, IL 60661
T. 800-USG4YOU www.USG.com

2-HR HEAD OF WALL UL HW-S-0035

HEAD OF WALL DETAILS - USG J2132 R1

ISSUE RECORD:
10/04/21

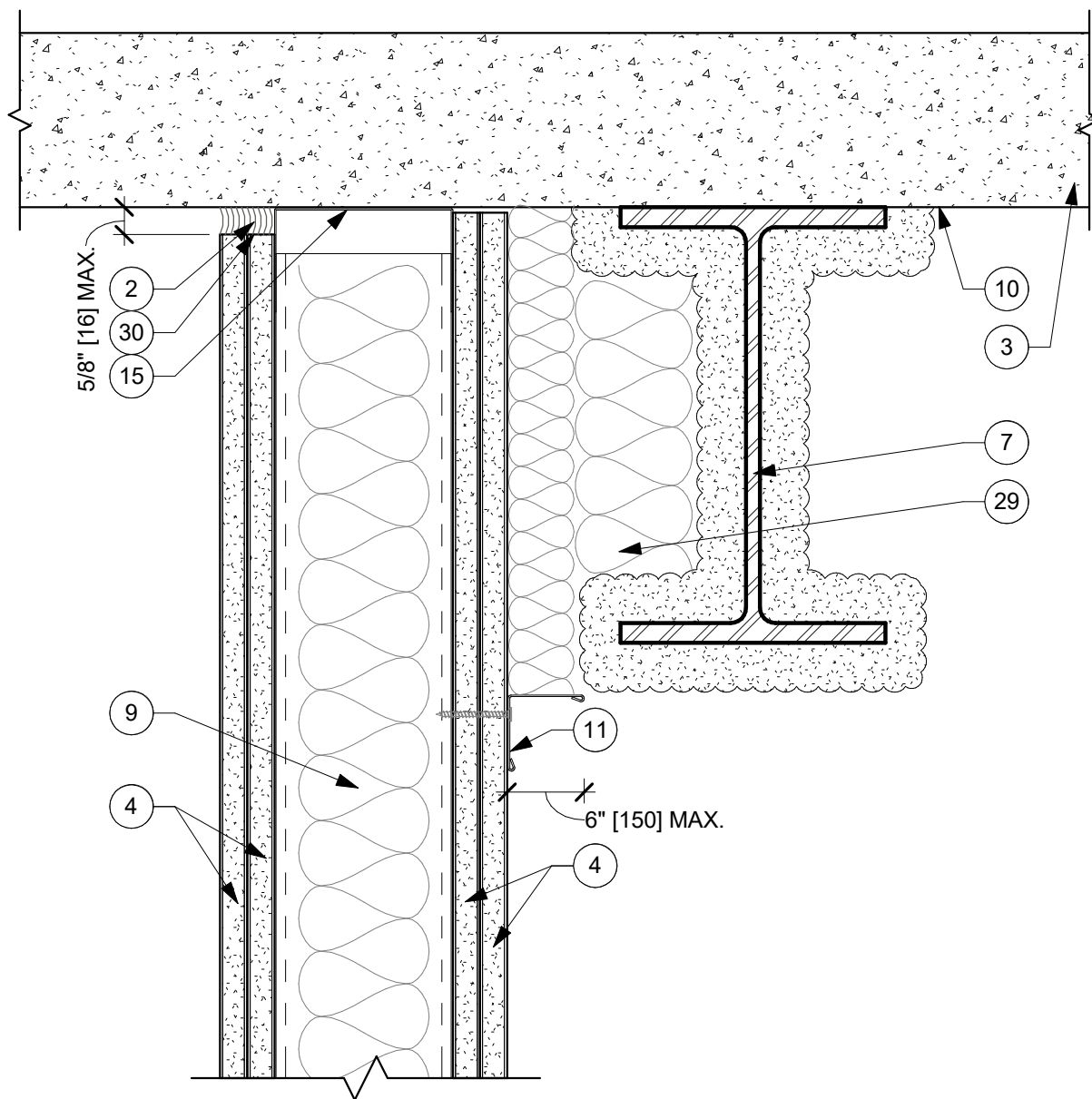
ISSUE: DATE:

SHEET INFORMATION:
SCALE: 3" = 1'-0"

HW-14

2-HR HEAD OF WALL UL HW-S-0035

DISCLAIMER: THE USG PRODUCT DETAILS CONTAINED HEREIN ARE INTENDED FOR USE AS PRODUCT REFERENCE MATERIAL BY ARCHITECTS, ENGINEERS, OTHER DESIGN PROFESSIONALS, CONTRACTORS, BUILDING CODE OFFICIALS, OR OTHER COMPETENT CONSTRUCTION INDUSTRY TRADE PROFESSIONALS HAVING AN INTEREST IN THE SELECTION, SPECIFICATION AND USE OF PRODUCTS MANUFACTURED BY THE SUBSIDIARIES OF USG CORPORATION. THE DRAWINGS ARE INTENDED SOLELY AS TECHNICAL SUPPORT INCIDENT TO THE SALE AND USE OF USG PRODUCTS AND NOT INTENDED TO BE A SUBSTITUTE FOR THE DESIGN REVIEW AND APPROVAL OF THE LICENSED DESIGN PROFESSIONALS FOR THE PROJECT. THESE MATERIALS MAY BE PRINTED AND/OR TRANSFERRED ELECTRONICALLY SOLELY AS NEEDED BY THE USER, BECAUSE CAD/ELECTRONIC FILES AND BIM (BUILDING INFORMATION MODELING) FILES CAN BE MODIFIED BY OTHER PARTIES, WITHOUT NOTICE OR INDICATION OF SUCH MODIFICATIONS, MODIFICATION OF USG PRODUCT CAD AND BIM DRAWINGS IS THE SOLE RESPONSIBILITY OF THE DESIGN PROFESSIONAL. ©2021 USG CORPORATION.



DETAIL NOTES - HEAD OF WALL - J2132

1	USG SHEETROCK X PANELS, REFERENCE UL HW-D-0001 FOR JOINT WIDTH INFORMATION
2	COMPLETELY FILL GAP ABOVE GYPSUM PANELS WITH USG SHEETROCK ACOUSTICAL OR SMOKE-SOUND SEALANT
3	STRUCTURAL SLAB
4	USG SHEETROCK FIRECODE X PANELS, CUT 5/8" MAX. FROM TOP OF PARTITION
5	MIN. 1/2" [12.5] THICK USG SHEETROCK FIRECODE COMPOUND
6	Z-CLIPS
7	STEEL BEAM WITH FIRE PROOFING
8	STEEL PLATE, EXTEND FIRE PROOFING FROM STEEL BEAM ONTO PLATE
9	MINERAL WOOL INSULATION
10	UNDERSIDE OF STRUCTURAL SLAB
11	CONTINUOUS 20-GAUGE ANGLE, FASTEN TO STUDS
12	PERFORATED METAL PLATE, SPAN BETWEEN FLUTES, REFERENCE HW-D-0001 FOR MORE INFORMATION
13	RESTRAINING ANGLE LINED WITH GYPSUM BOARD, MATCHING PARTITION BELOW
14	FASTENERS TO BE SET FLUSH ON DRYWALL SIDE
15	TRACK STUD
16	MIN. 1/2" [13] THICK USG SHEETROCK FIRECODE COMPOUND
17	MINERAL WOOL BATT INSULATION
18	USG SHEETROCK X PANELS, CUT 5/8" FROM UNDERSIDE OF PROTECTED STEEL PLATE
19	MINERAL WOOL FILL MATERIAL
20	CEILING HEAD AND RELIEF TRACK
21	LAP SEALANT 1/2" BELOW TOP OF GYPSUM PANELS (BOTH SIDES)
22	USG SHEETROCK X PANELS, BUTT TIGHT TO UNDERSIDE OF STEEL DECK, THICKNESS PER ARCHITECT
23	USG SHEETROCK X PANELS, CUT 1/2" MAX. FROM TOP OF PARTITION, THICKNESS PER ARCHITECT
24	USG SHEETROCK X PANELS, REFERENCE UL HW-D-0002 FOR JOINT WIDTH INFORMATION
25	USG SHEETROCK FIRECODE X PANELS
26	COMPLETELY FILL GAP ABOVE GYPSUM PANELS WITH USG SHEETROCK ACOUSTICAL OR SMOKE-SOUND SEALANT (BOTH SIDES)
27	STEEL BEAM WITH FIRE PROOFING REFERENCE STRUCTURAL DRAWINGS FOR BEAM SIZE AND FIREPROOFING THICKNESS
28	UNDERSIDE OF COMPOSITE STRUCTURAL SLAB
29	FILL CAVITY WITH MINERAL WOOL
30	CUT DRYWALL SHORT OF STRUCTURAL DECK BY 5/8"



USG Corporation
550 West Adams Street, Chicago, IL 60661
T. 800-USG4YOU www.USG.com

2-HR HEAD OF WALL ADJACENT TO BEAM

HEAD OF WALL DETAILS - USG J2132 R1

ISSUE RECORD:
10/04/21

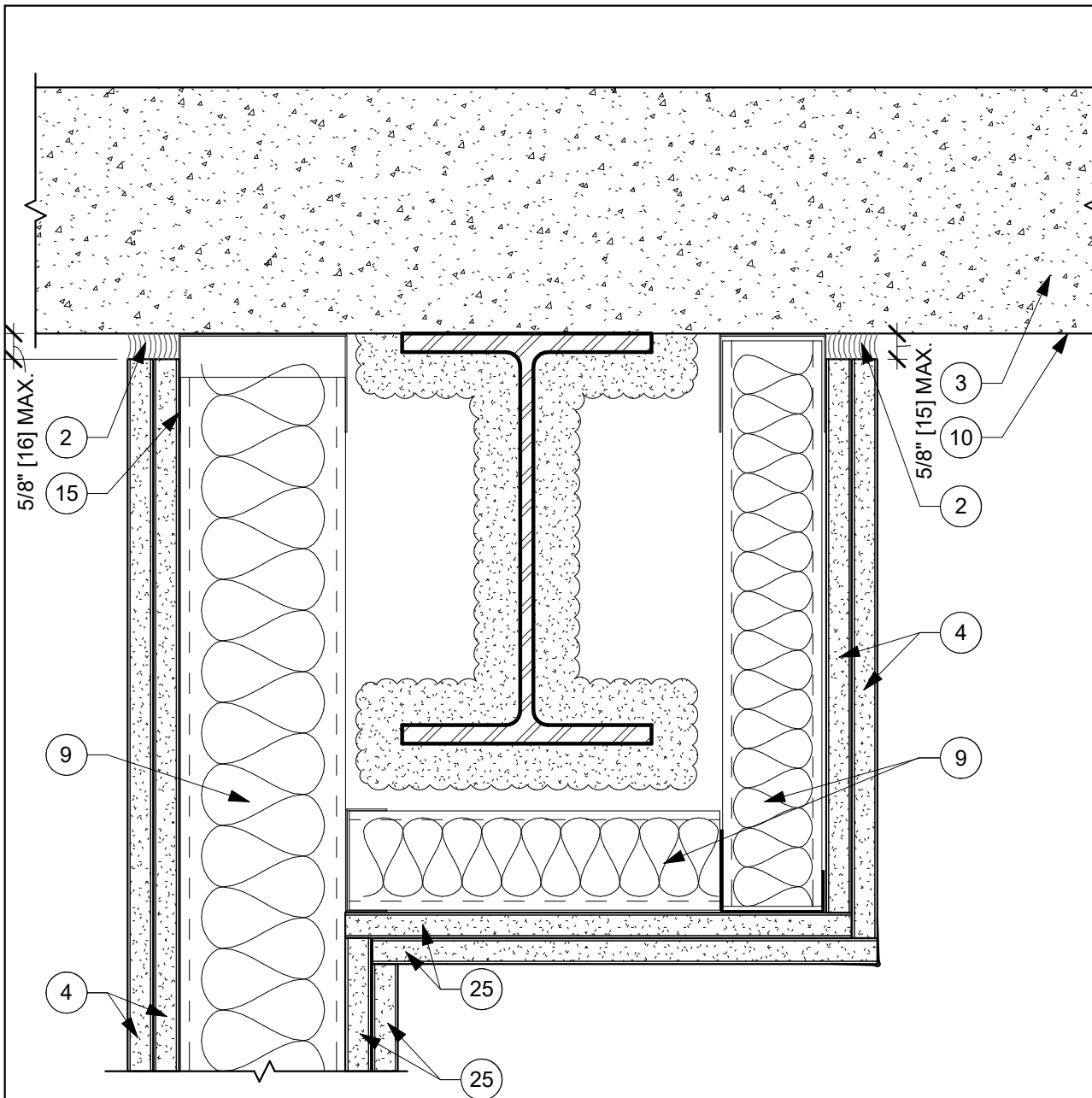
ISSUE: DATE:

SHEET INFORMATION:
SCALE: 3" = 1'-0"

HW-15

2-HR HEAD OF WALL ADJACENT TO BEAM

DISCLAIMER: THE USG PRODUCT DETAILS CONTAINED HEREIN ARE INTENDED FOR USE AS PRODUCT REFERENCE MATERIAL BY ARCHITECTS, ENGINEERS, OTHER DESIGN PROFESSIONALS, CONTRACTORS, BUILDING CODE OFFICIALS, OR OTHER COMPETENT CONSTRUCTION INDUSTRY TRADE PROFESSIONALS HAVING AN INTEREST IN THE SELECTION, SPECIFICATION AND USE OF PRODUCTS MANUFACTURED BY THE SUBSIDIARIES OF USG CORPORATION. THE DRAWINGS ARE INTENDED SOLELY AS TECHNICAL SUPPORT INCIDENT TO THE SALE AND USE OF USG PRODUCTS AND NOT INTENDED TO BE A SUBSTITUTE FOR THE DESIGN REVIEW AND APPROVAL OF THE LICENSED DESIGN PROFESSIONALS FOR THE PROJECT. THESE MATERIALS MAY BE PRINTED AND/OR TRANSFERRED ELECTRONICALLY SOLELY AS NEEDED BY THE USER, BECAUSE CAD ELECTRONIC FILES AND BIM (BUILDING INFORMATION MODELING) FILES CAN BE MODIFIED BY OTHER PARTIES, WITHOUT NOTICE OR INDICATION OF SUCH MODIFICATIONS, MODIFICATION OF USG PRODUCT CAD AND BIM DRAWINGS IS THE SOLE RESPONSIBILITY OF THE DESIGN PROFESSIONAL. ©2021 USG CORPORATION.



DETAIL NOTES - HEAD OF WALL - J2132

1	USG SHEETROCK X PANELS, REFERENCE UL HW-D-0001 FOR JOINT WIDTH INFORMATION
2	COMPLETELY FILL GAP ABOVE GYPSUM PANELS WITH USG SHEETROCK ACOUSTICAL OR SMOKE-SOUND SEALANT
3	STRUCTURAL SLAB
4	USG SHEETROCK FIRECODE X PANELS, CUT 5/8" MAX. FROM TOP OF PARTITION
5	MIN. 1/2" [12.5] THICK USG SHEETROCK FIRECODE COMPOUND
6	Z-CLIPS
7	STEEL BEAM WITH FIRE PROOFING
8	STEEL PLATE, EXTEND FIRE PROOFING FROM STEEL BEAM ONTO PLATE
9	MINERAL WOOL INSULATION
10	UNDERSIDE OF STRUCTURAL SLAB
11	CONTINUOUS 20-GAUGE ANGLE, FASTEN TO STUDS
12	PERFORATED METAL PLATE, SPAN BETWEEN FLUTES, REFERENCE HW-D-0001 FOR MORE INFORMATION
13	RESTRAINING ANGLE LINED WITH GYPSUM BOARD, MATCHING PARTITION BELOW
14	FASTENERS TO BE SET FLUSH ON DRYWALL SIDE
15	TRACK STUD
16	MIN. 1/2" [13] THICK USG SHEETROCK FIRECODE COMPOUND
17	MINERAL WOOL BATT INSULATION
18	USG SHEETROCK X PANELS, CUT 5/8" FROM UNDERSIDE OF PROTECTED STEEL PLATE
19	MINERAL WOOL FILL MATERIAL
20	CEILING HEAD AND RELIEF TRACK
21	LAP SEALANT 1/2" BELOW TOP OF GYPSUM PANELS (BOTH SIDES)
22	USG SHEETROCK X PANELS, BUTT TIGHT TO UNDERSIDE OF STEEL DECK, THICKNESS PER ARCHITECT
23	USG SHEETROCK X PANELS, CUT 1/2" MAX. FROM TOP OF PARTITION, THICKNESS PER ARCHITECT
24	USG SHEETROCK X PANELS, REFERENCE UL HW-D-0002 FOR JOINT WIDTH INFORMATION
25	USG SHEETROCK FIRECODE X PANELS
26	COMPLETELY FILL GAP ABOVE GYPSUM PANELS WITH USG SHEETROCK ACOUSTICAL OR SMOKE-SOUND SEALANT (BOTH SIDES)
27	STEEL BEAM WITH FIRE PROOFING REFERENCE STRUCTURAL DRAWINGS FOR BEAM SIZE AND FIREPROOFING THICKNESS
28	UNDERSIDE OF COMPOSITE STRUCTURAL SLAB
29	FILL CAVITY WITH MINERAL WOOL
30	CUT DRYWALL SHORT OF STRUCTURAL DECK BY 5/8"



USG Corporation
550 West Adams Street, Chicago, IL 60661
T. 800-USG4YOU www.USG.com

2-HR HEAD OF WALL AT BEAM

HEAD OF WALL DETAILS - USG J2132 R1

ISSUE RECORD:
10/04/21

ISSUE: DATE:

SHEET INFORMATION:
SCALE: 3" = 1'-0"

HW-16

2-HR HEAD OF WALL AT BEAM

DISCLAIMER: THE USG PRODUCT DETAILS CONTAINED HEREIN ARE INTENDED FOR USE AS PRODUCT REFERENCE MATERIAL BY ARCHITECTS, ENGINEERS, OTHER DESIGN PROFESSIONALS, CONTRACTORS, BUILDING CODE OFFICIALS, OR OTHER COMPETENT CONSTRUCTION INDUSTRY TRADE PROFESSIONALS HAVING AN INTEREST IN THE SELECTION, SPECIFICATION AND USE OF PRODUCTS MANUFACTURED BY THE SUBSIDIARIES OF USG CORPORATION. THE DRAWINGS ARE INTENDED SOLELY AS TECHNICAL SUPPORT INCIDENT TO THE SALE AND USE OF USG PRODUCTS AND NOT INTENDED TO BE A SUBSTITUTE FOR THE DESIGN REVIEW AND APPROVAL OF THE LICENSED DESIGN PROFESSIONALS FOR THE PROJECT. THESE MATERIALS MAY BE PRINTED AND/OR TRANSFERRED ELECTRONICALLY SOLELY AS NEEDED BY THE USER, BECAUSE CAD ELECTRONIC FILES AND BIM (BUILDING INFORMATION MODELING) FILES CAN BE MODIFIED BY OTHER PARTIES, WITHOUT NOTICE OR INDICATION OF SUCH MODIFICATIONS, MODIFICATION OF USG PRODUCT CAD AND BIM DRAWINGS IS THE SOLE RESPONSIBILITY OF THE DESIGN PROFESSIONAL. ©2021 USG CORPORATION.