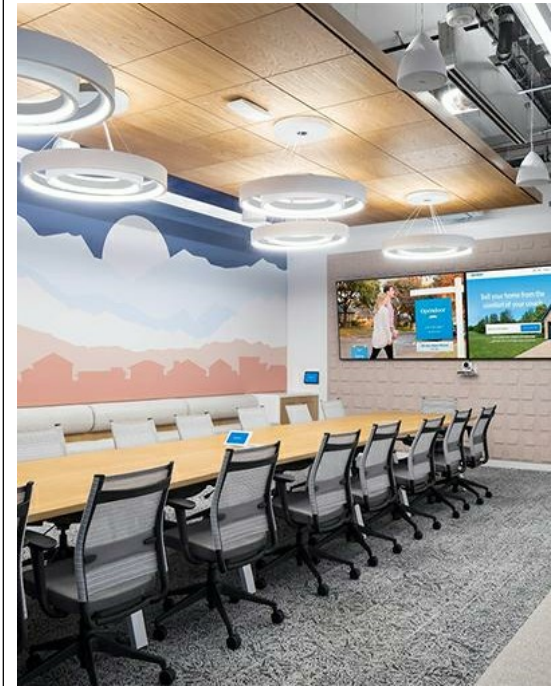


Sheet Number	Sheet Name	Current Revision Date
AR00	USG TRUE™ WOOD PANELS AR EDGE - MAIN	
AR01	PERIMETER ON MODULE - AR EDGE - COMPASSO™ STANDARD	
AR02	PERIMETER OFF MODULE - AR EDGE - COMPASSO™ STANDARD	
AR03	PERIMETER ON MODULE - DX GRID - AR EDGE - M7 ANGLE MOLDING	
AR04	PERIMETER OFF MODULE - DX GRID - AR EDGE - M7 ANGLE MOLDING	
AR05	PERIMETER ON MODULE - DX GRID - AR EDGE - M9 ANGLE MOLDING	
AR06	PERIMETER CUT PANEL - DX GRID - AR EDGE - M9 ANGLE MOLDING	
AR07	PERIMETER - DX GRID - AR EDGE - M12 ANGLE MOLDING	
AR08	SECTION THRU LINEAR LIGHT FIXTURE WITH DX GRID - AR EDGE	
AR09	SECTION THRU LINEAR LIGHT FIXTURE WITH LOGIX™ YOKE - DX GRID - AR EDGE	
AR10	SECTION THRU LINEAR LIGHT FIXTURE WITH DX GRID - AR EDGE - PANEL FIXING BRACKETS	
AR11	PERIMETER ON MODULE - DX GRID - AR EDGE - TRUE™ WOOD TRIM	
AR12	PERIMETER ON MODULE - DX GRID - AR EDGE - TRUE™ WOOD TRIM	
AR13	PERIMETER OFF MODULE - DX GRID - AR EDGE - TRUE™ WOOD TRIM	
AR14	PERIMETER ON MODULE - AR EDGE - TRUE™ WOOD TRIM	
AR15	PERIMETER OFF MODULE - AR EDGE - TRUE™ WOOD TRIM	
AR16	SECTION THRU CROSS TEE WITH DX GRID - AR EDGE	
AR17	SECTION THRU MAIN TEE WITH DX GRID - AR EDGE	

TRUE™ WOOD PANELS

NOTES:

1. REFERENCE USG IC561 FOR INSTALLATION INSTRUCTIONS.
2. PANELS MAY BE FIELD-CUT AT WALL AND COLUMNS BUT OTHERWISE SHOULD BE USED IN FULL MODULES.
3. FOR BEST INSTALLATION RESULTS, PRE-DRILL ALL HOLES AT PANEL PERIMETERS THROUGH PANEL AND SUSPENSION SYSTEM BEFORE INSTALLING FASTENER.



USG Corporation
550 West Adams Street, Chicago, IL 60661
T. 800-USG4YOU www.USG.com

TRUE™ WOOD PANEL SYSTEM ACCESSIBLE REVEAL EDGE DETAILS

ISSUE RECORD:

09/21/21

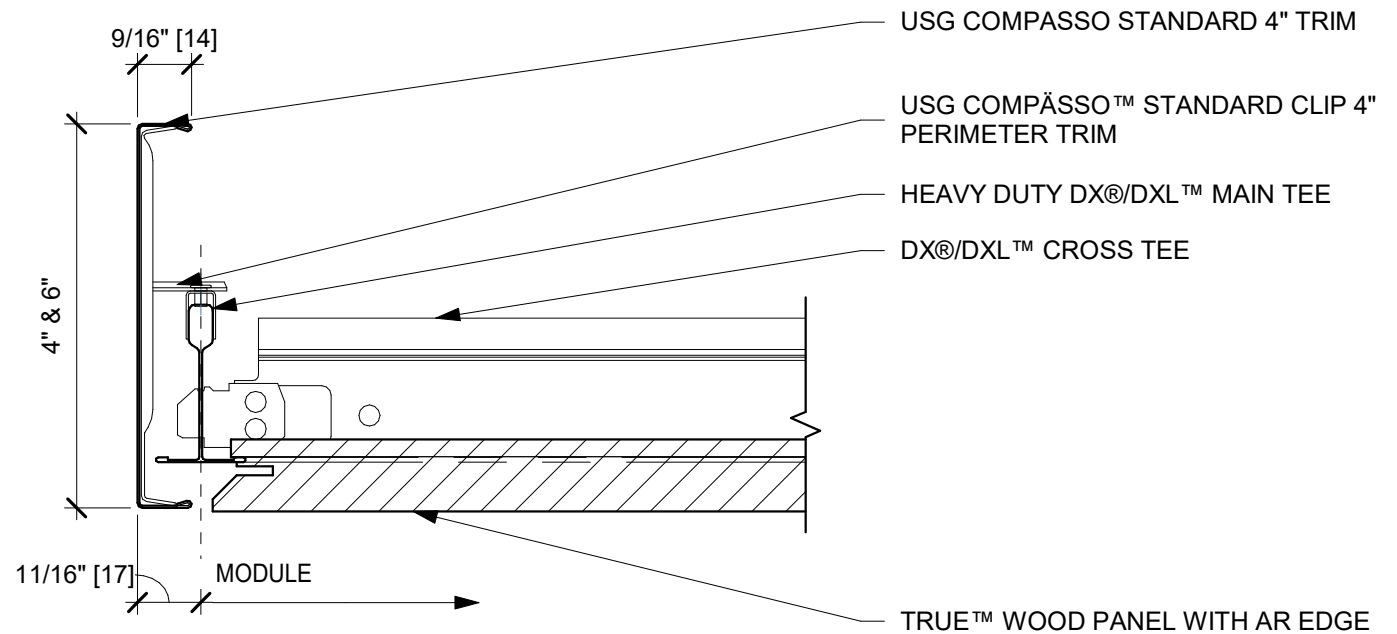
REV: DATE:

SHEET INFORMATION:

SCALE:

AR00

USG TRUE™ WOOD PANELS AR EDGE - MAIN



NOTE: PROVIDE PANEL FIXING BRACKETS AT PERIMETER
WHEN PANELS DO NOT ENGAGE ON ALL 4 SIDES WITH
GRID OR WHEN PANELS ARE MODIFIED IN ANY WAY



USG Corporation
550 West Adams Street, Chicago, IL 60661
T. 800-USG4YOU www.USG.com

TRUE™ WOOD PANEL SYSTEM ACCESSIBLE REVEAL EDGE DETAILS

ISSUE RECORD:

09/21/21

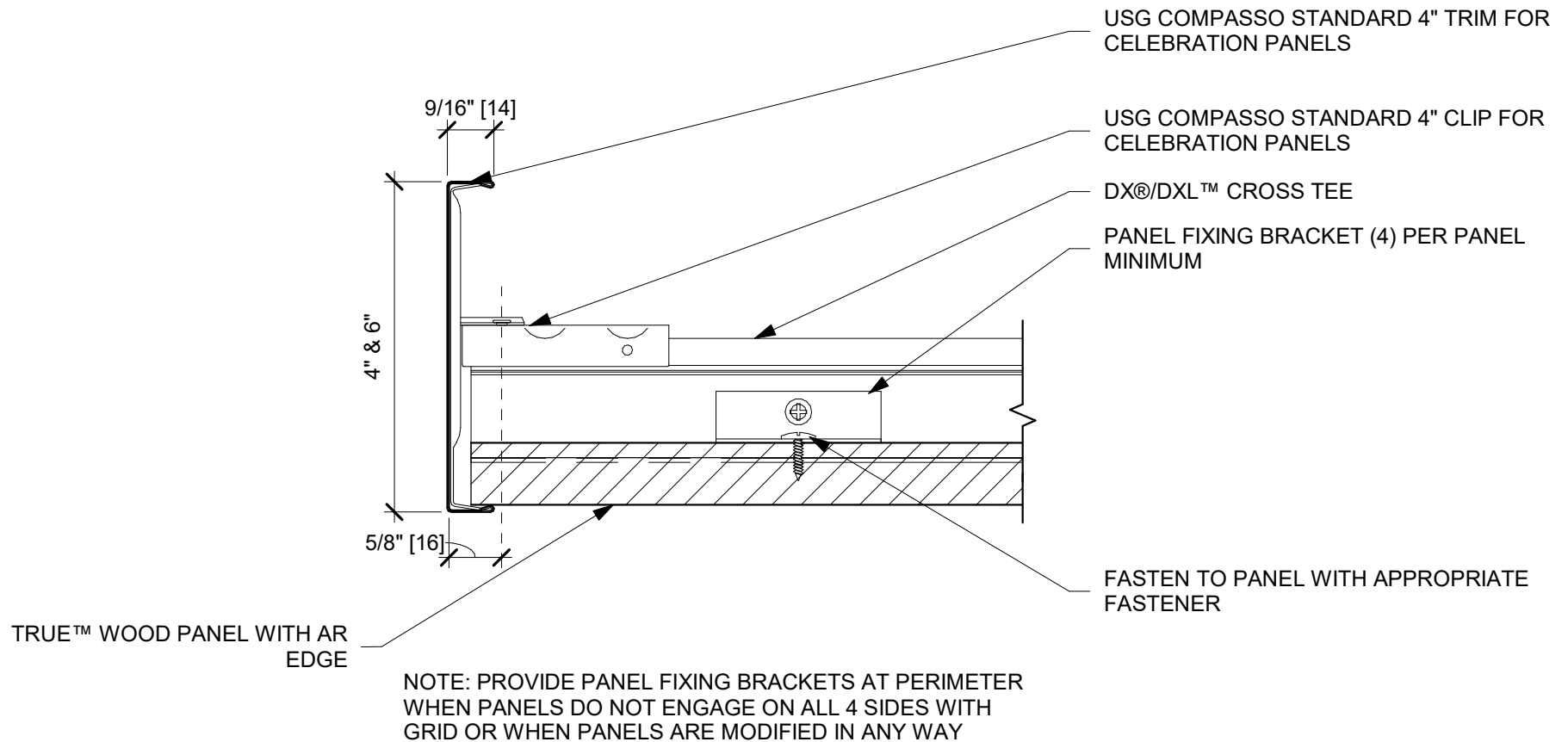
REV: DATE:

SHEET INFORMATION:

SCALE: 6" = 1'-0"

AR01

PERIMETER ON MODULE - AR EDGE -
COMPASSO™ STANDARD



USG Corporation
 550 West Adams Street, Chicago, IL 60661
 T. 800-USG4YOU www.USG.com

TRUE™ WOOD PANEL SYSTEM ACCESSIBLE REVEAL EDGE DETAILS

ISSUE RECORD:

09/21/21

REV: DATE:

SHEET INFORMATION:

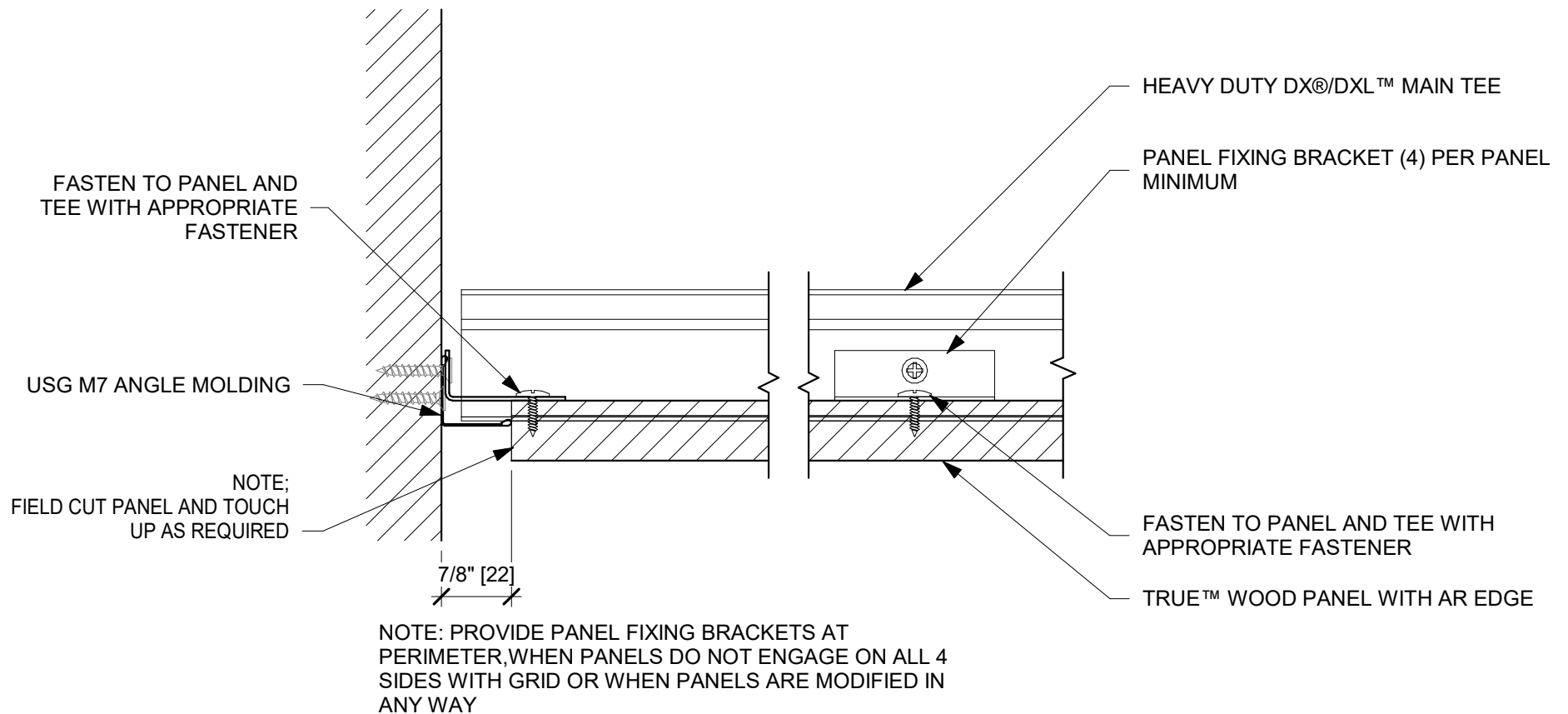
SCALE: 6" = 1'-0"

AR02

PERIMETER OFF MODULE - AR EDGE -

COMPASSO™ STANDARD

DISCLAIMER: THE USG PRODUCT DETAILS CONTAINED HEREIN ARE INTENDED FOR USE AS PRODUCT REFERENCE MATERIAL BY ARCHITECTS, ENGINEERS, OTHER DESIGN PROFESSIONALS, CONTRACTORS, BUILDING CODE OFFICIALS, OR OTHER COMPETENT CONSTRUCTION INDUSTRY TRADE PROFESSIONALS HAVING AN INTEREST IN THE SELECTION, SPECIFICATION AND USE OF PRODUCTS MANUFACTURED BY THE SUBSIDIARIES OF USG CORPORATION. THE DRAWINGS ARE INTENDED SOLELY AS TECHNICAL SUPPORT INCIDENT TO THE SALE AND USE OF USG PRODUCTS AND NOT INTENDED TO BE A SUBSTITUTE FOR THE DESIGN REVIEW AND APPROVAL OF THE LICENSED DESIGN PROFESSIONALS FOR THE PROJECT. THESE MATERIALS MAY BE PRINTED AND/OR TRANSFERRED ELECTRONICALLY SOLELY AS NEEDED BY THE USER, BECAUSE CAD/ELECTRONIC FILES AND BIM (BUILDING INFORMATION MODELING) FILES CAN BE MODIFIED BY OTHER PARTIES, WITHOUT NOTICE OR INDICATION OF SUCH MODIFICATIONS, MODIFICATION OF USG PRODUCT CAD AND/OR BIM DRAWINGS IS THE SOLE RESPONSIBILITY OF THE DESIGN PROFESSIONAL. ©2021 USG CORPORATION.



USG Corporation
550 West Adams Street, Chicago, IL 60661
T. 800-USG4YOU www.USG.com

TRUE™ WOOD PANEL SYSTEM

ACCESSIBLE REVEAL EDGE DETAILS

ISSUE RECORD:

09/21/21

REV: DATE:

SHEET INFORMATION:

SCALE: 6" = 1'-0"

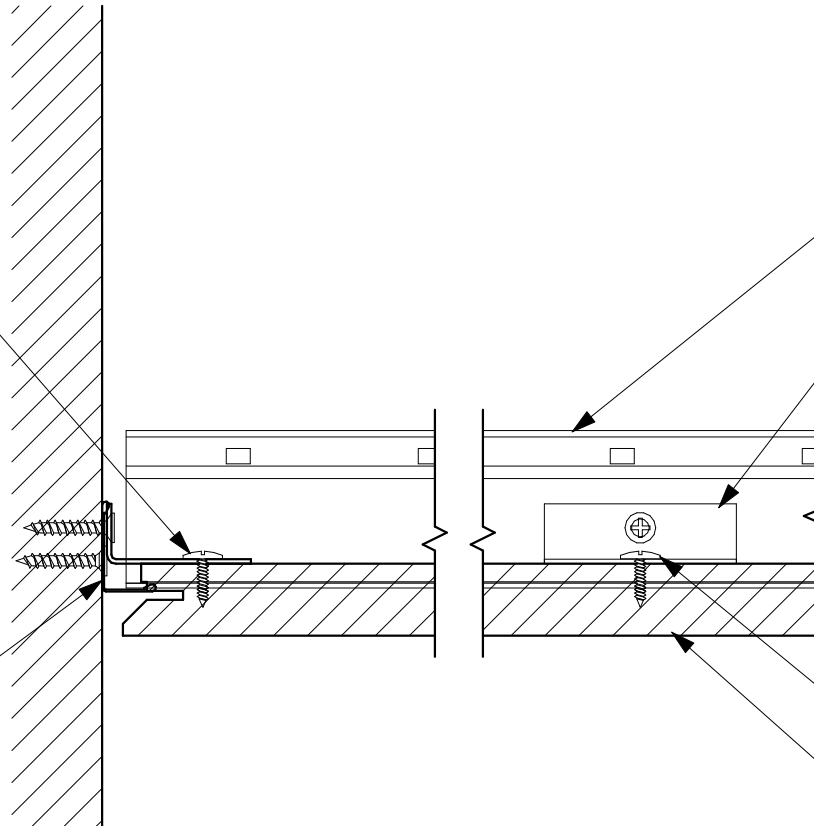
AR04

PERIMETER OFF MODULE - DX GRID - AR EDGE
- M7 ANGLE MOLDING

DISCLAIMER: THE USG PRODUCT DETAILS CONTAINED HEREIN ARE INTENDED FOR USE AS PRODUCT REFERENCE MATERIAL BY ARCHITECTS, ENGINEERS, OTHER DESIGN PROFESSIONALS, CONTRACTORS, BUILDING CODE OFFICIALS, OR OTHER COMPETENT CONSTRUCTION INDUSTRY TRADE PROFESSIONALS HAVING AN INTEREST IN THE SELECTION, SPECIFICATION AND USE OF PRODUCTS MANUFACTURED BY THE SUBSIDIARIES OF USG CORPORATION. THE DRAWINGS ARE INTENDED SOLELY AS TECHNICAL SUPPORT INCIDENT TO THE SALE AND USE OF USG PRODUCTS AND NOT INTENDED TO BE A SUBSTITUTE FOR THE DESIGN REVIEW AND APPROVAL OF THE LICENSED DESIGN PROFESSIONALS FOR THE PROJECT. THESE MATERIALS MAY BE PRINTED AND/OR TRANSFERRED ELECTRONICALLY SOLELY AS NEEDED BY THE USER, BECAUSE CAD/ELECTRONIC FILES AND BIM (BUILDING INFORMATION MODELING) FILES CAN BE MODIFIED BY OTHER PARTIES, WITHOUT NOTICE OR INDICATION OF SUCH MODIFICATIONS, MODIFICATION OF USG PRODUCT CAD AND/OR BIM DRAWINGS IS THE SOLE RESPONSIBILITY OF THE DESIGN PROFESSIONAL. ©2021 USG CORPORATION.

PANEL FIXING BRACKET (4) PER
PANEL MINIMUM (IF REQUIRED).
FASTEN TO PANEL AND TEE WITH
APPROPRIATE FASTENER

USG M9 ANGLE MOLDING



HEAVY DUTY DX®/DXL™ MAIN TEE

PANEL FIXING BRACKET (4) PER PANEL
MINIMUM (IF REQUIRED).

FASTEN TO PANEL AND
TEE WITH APPROPRIATE
FASTENER

TRUE™ WOOD PANEL WITH AR EDGE

NOTE: PROVIDE PANEL FIXING BRACKETS AT
PERIMETER, WHEN PANELS DO NOT ENGAGE ON ALL 4
SIDES WITH GRID OR WHEN PANELS ARE MODIFIED IN
ANY WAY



USG Corporation
550 West Adams Street, Chicago, IL 60661
T. 800-USG4YOU www.USG.com

TRUE™ WOOD PANEL SYSTEM ACCESSIBLE REVEAL EDGE DETAILS

ISSUE RECORD:

09/21/21

REV: DATE:

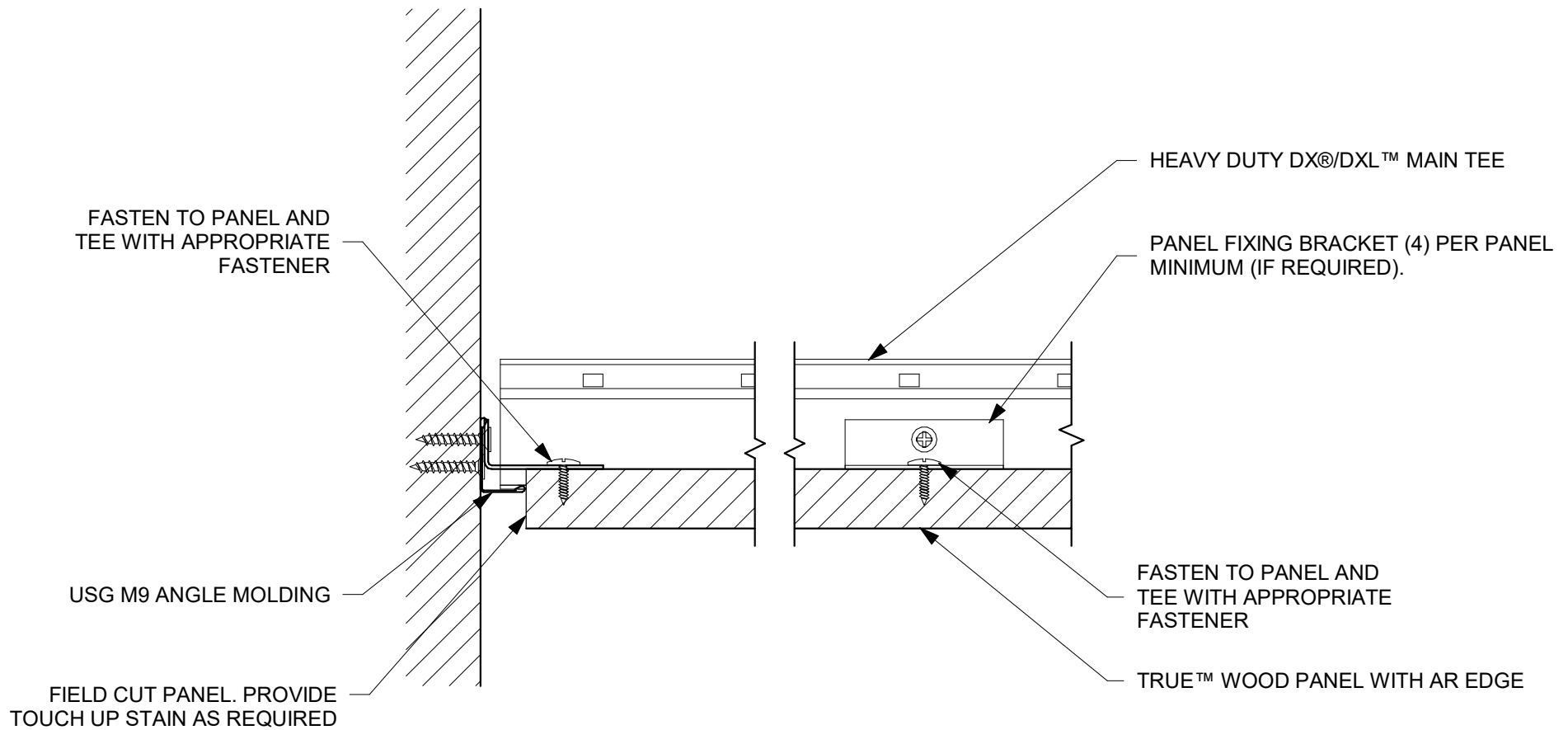
SHEET INFORMATION:

SCALE: 6" = 1'-0"

AR05

PERIMETER ON MODULE - DX GRID - AR EDGE -
M9 ANGLE MOLDING

DISCLAIMER: THE USG PRODUCT DETAILS CONTAINED HEREIN ARE INTENDED FOR USE AS PRODUCT REFERENCE MATERIAL BY ARCHITECTS, ENGINEERS, OTHER DESIGN PROFESSIONALS, CONTRACTORS, BUILDING CODE OFFICIALS, OR OTHER COMPETENT CONSTRUCTION INDUSTRY TRADE PROFESSIONALS HAVING AN INTEREST IN THE SELECTION, SPECIFICATION AND USE OF PRODUCTS MANUFACTURED BY THE SUBSIDIARIES OF USG CORPORATION. THE DRAWINGS ARE INTENDED SOLELY AS TECHNICAL SUPPORT INCIDENT TO THE SALE AND USE OF USG PRODUCTS AND NOT INTENDED TO BE A SUBSTITUTE FOR THE DESIGN REVIEW AND APPROVAL OF THE LICENSED DESIGN PROFESSIONALS FOR THE PROJECT. THESE MATERIALS MAY BE PRINTED AND/OR TRANSFERRED ELECTRONICALLY SOLELY AS NEEDED BY THE USER, BECAUSE CAD/ELECTRONIC FILES AND BIM (BUILDING INFORMATION MODELING) FILES CAN BE MODIFIED BY OTHER PARTIES, WITHOUT NOTICE OR INDICATION OF SUCH MODIFICATIONS, MODIFICATION OF USG PRODUCT CAD AND/OR BIM DRAWINGS IS THE SOLE RESPONSIBILITY OF THE DESIGN PROFESSIONAL. ©2021 USG CORPORATION.



USG Corporation
550 West Adams Street, Chicago, IL 60661
T. 800-USG4YOU www.USG.com

TRUE™ WOOD PANEL SYSTEM ACCESSIBLE REVEAL EDGE DETAILS

ISSUE RECORD:

09/21/21

REV: DATE:

SHEET INFORMATION:

SCALE: 6" = 1'-0"

AR06

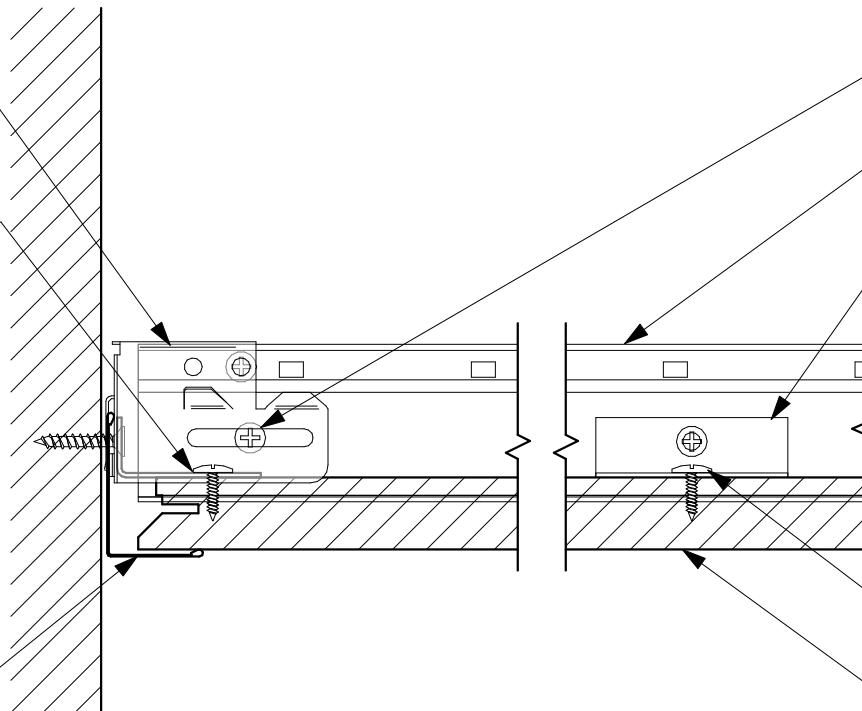
PERIMETER CUT PANEL - DX GRID - AR EDGE -
M9 ANGLE MOLDING

DISCLAIMER: THE USG PRODUCT DETAILS CONTAINED HEREIN ARE INTENDED FOR USE AS PRODUCT REFERENCE MATERIAL BY ARCHITECTS, ENGINEERS, OTHER DESIGN PROFESSIONALS, CONTRACTORS, BUILDING CODE OFFICIALS, OR OTHER COMPETENT CONSTRUCTION INDUSTRY TRADE PROFESSIONALS HAVING AN INTEREST IN THE SELECTION, SPECIFICATION AND USE OF PRODUCTS MANUFACTURED BY THE SUBSIDIARIES OF USG CORPORATION. THE DRAWINGS ARE INTENDED SOLELY AS TECHNICAL SUPPORT INCIDENT TO THE SALE AND USE OF USG PRODUCTS AND NOT INTENDED TO BE A SUBSTITUTE FOR THE DESIGN REVIEW AND APPROVAL OF THE LICENSED DESIGN PROFESSIONALS FOR THE PROJECT. THESE MATERIALS MAY BE PRINTED AND/OR TRANSFERRED ELECTRONICALLY SOLELY AS NEEDED BY THE USER, BECAUSE CAD/ELECTRONIC FILES AND BIM (BUILDING INFORMATION MODELING) FILES CAN BE MODIFIED BY OTHER PARTIES, WITHOUT NOTICE OR INDICATION OF SUCH MODIFICATIONS, MODIFICATION OF USG PRODUCT CAD AND/OR BIM DRAWINGS IS THE SOLE RESPONSIBILITY OF THE DESIGN PROFESSIONAL. ©2021 USG CORPORATION.

USG ACM7 SEISMIC PERIMETER
ATTACHMENT CLIP

FASTEN TO PANEL AND
TEE WITH APPROPRIATE
FASTENER

USG M12 ANGLE MOLDING



TYPE 'S' FASTENER TO TEE
THRU EITHER HOLE OR SLOT

HEAVY DUTY DX®/DXL™ MAIN TEE

PANEL FIXING BRACKET (4) PER PANEL
MINIMUM

FASTEN TO PANEL AND
TEE WITH APPROPRIATE
FASTENER

TRUE™ WOOD PANEL WITH AR EDGE

NOTE: PROVIDE PANEL FIXING BRACKETS AT PERIMETER
OR WHEN PANELS ARE MODIFIED IN ANY WAY



USG Corporation
550 West Adams Street, Chicago, IL 60661
T. 800-USG4YOU www.USG.com

TRUE™ WOOD PANEL SYSTEM ACCESSIBLE REVEAL EDGE DETAILS

ISSUE RECORD:

09/21/21

REV: DATE:

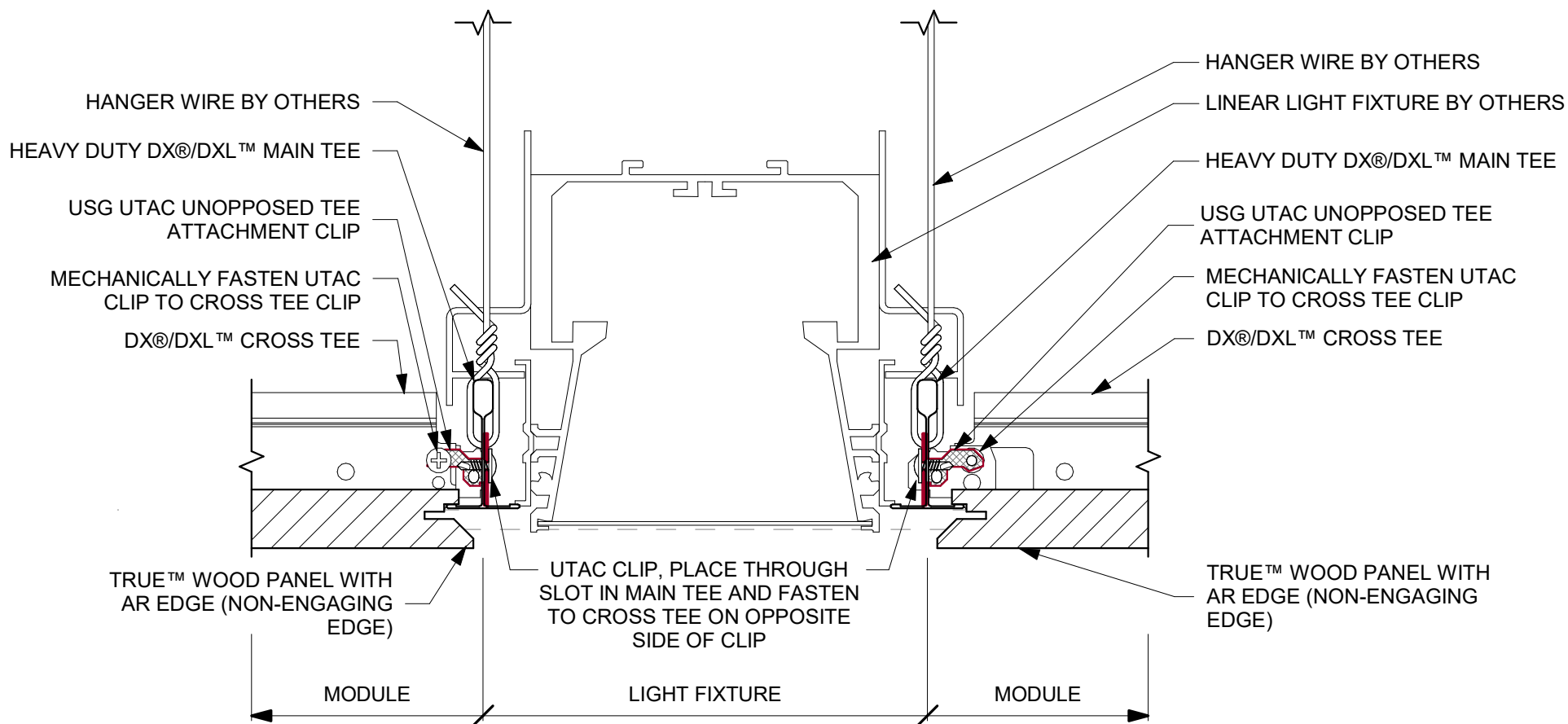
SHEET INFORMATION:

SCALE: 6" = 1'-0"

AR07

PERIMETER - DX GRID - AR EDGE - M12 ANGLE
MOLDING

DISCLAIMER: THE USG PRODUCT DETAILS CONTAINED HEREIN ARE INTENDED FOR USE AS PRODUCT REFERENCE MATERIAL BY ARCHITECTS, ENGINEERS, OTHER DESIGN PROFESSIONALS, CONTRACTORS, BUILDING CODE OFFICIALS, OR OTHER COMPETENT CONSTRUCTION INDUSTRY TRADE PROFESSIONALS HAVING AN INTEREST IN THE SELECTION, SPECIFICATION AND USE OF PRODUCTS MANUFACTURED BY THE SUBSIDIARIES OF USG CORPORATION. THE DRAWINGS ARE INTENDED SOLELY AS TECHNICAL SUPPORT INCIDENT TO THE SALE AND USE OF USG PRODUCTS AND NOT INTENDED TO BE A SUBSTITUTE FOR THE DESIGN REVIEW AND APPROVAL OF THE LICENSED DESIGN PROFESSIONALS FOR THE PROJECT. THESE MATERIALS MAY BE PRINTED AND/OR TRANSFERRED ELECTRONICALLY SOLELY AS NEEDED BY THE USER, BECAUSE CAD/ELECTRONIC FILES AND BIM (BUILDING INFORMATION MODELING) FILES CAN BE MODIFIED BY OTHER PARTIES, WITHOUT NOTICE OR INDICATION OF SUCH MODIFICATIONS, MODIFICATION OF USG PRODUCT CAD AND/OR BIM DRAWINGS IS THE SOLE RESPONSIBILITY OF THE DESIGN PROFESSIONAL. ©2021 USG CORPORATION.



USG Corporation
 550 West Adams Street, Chicago, IL 60661
 T. 800-USG4YOU www.USG.com

TRUE™ WOOD PANEL SYSTEM ACCESSIBLE REVEAL EDGE DETAILS

ISSUE RECORD:

09/21/21

REV: DATE:

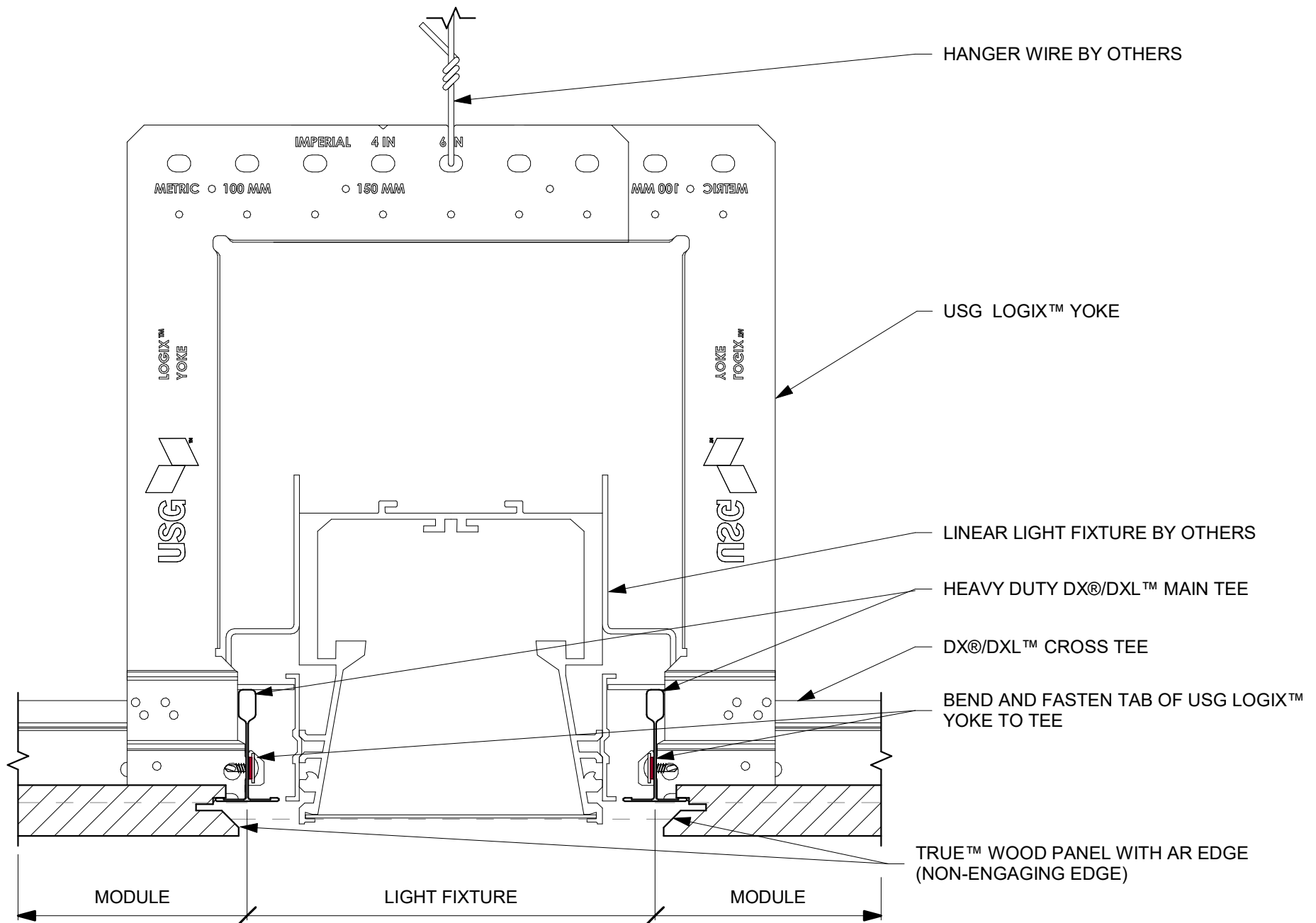
SHEET INFORMATION:

SCALE: 6" = 1'-0"

AR08

SECTION THRU LINEAR LIGHT FIXTURE WITH DX
 GRID - AR EDGE

DISCLAIMER: THE USG PRODUCT DETAILS CONTAINED HEREIN ARE INTENDED FOR USE AS PRODUCT REFERENCE MATERIAL BY ARCHITECTS, ENGINEERS, OTHER DESIGN PROFESSIONALS, CONTRACTORS, BUILDING CODE OFFICIALS, OR OTHER COMPETENT CONSTRUCTION INDUSTRY TRADE PROFESSIONALS HAVING AN INTEREST IN THE SELECTION, SPECIFICATION AND USE OF PRODUCTS MANUFACTURED BY THE SUBSIDIARIES OF USG CORPORATION. THE DRAWINGS ARE INTENDED SOLELY AS TECHNICAL SUPPORT INCIDENT TO THE SALE AND USE OF USG PRODUCTS AND NOT INTENDED TO BE A SUBSTITUTE FOR THE DESIGN REVIEW AND APPROVAL OF THE LICENSED DESIGN PROFESSIONALS FOR THE PROJECT. THESE MATERIALS MAY BE PRINTED AND/OR TRANSFERRED ELECTRONICALLY SOLELY AS NEEDED BY THE USER, BECAUSE CAD/ELECTRONIC FILES AND BIM (BUILDING INFORMATION MODELING) FILES CAN BE MODIFIED BY OTHER PARTIES, WITHOUT NOTICE OR INDICATION OF SUCH MODIFICATIONS, MODIFICATION OF USG PRODUCT CAD AND/OR BIM DRAWINGS IS THE SOLE RESPONSIBILITY OF THE DESIGN PROFESSIONAL. ©2021 USG CORPORATION.



USG Corporation
 550 West Adams Street, Chicago, IL 60661
 T. 800-USG4YOU www.USG.com

TRUE™ WOOD PANEL SYSTEM ACCESSIBLE REVEAL EDGE DETAILS

ISSUE RECORD:

09/21/21

REV: DATE:

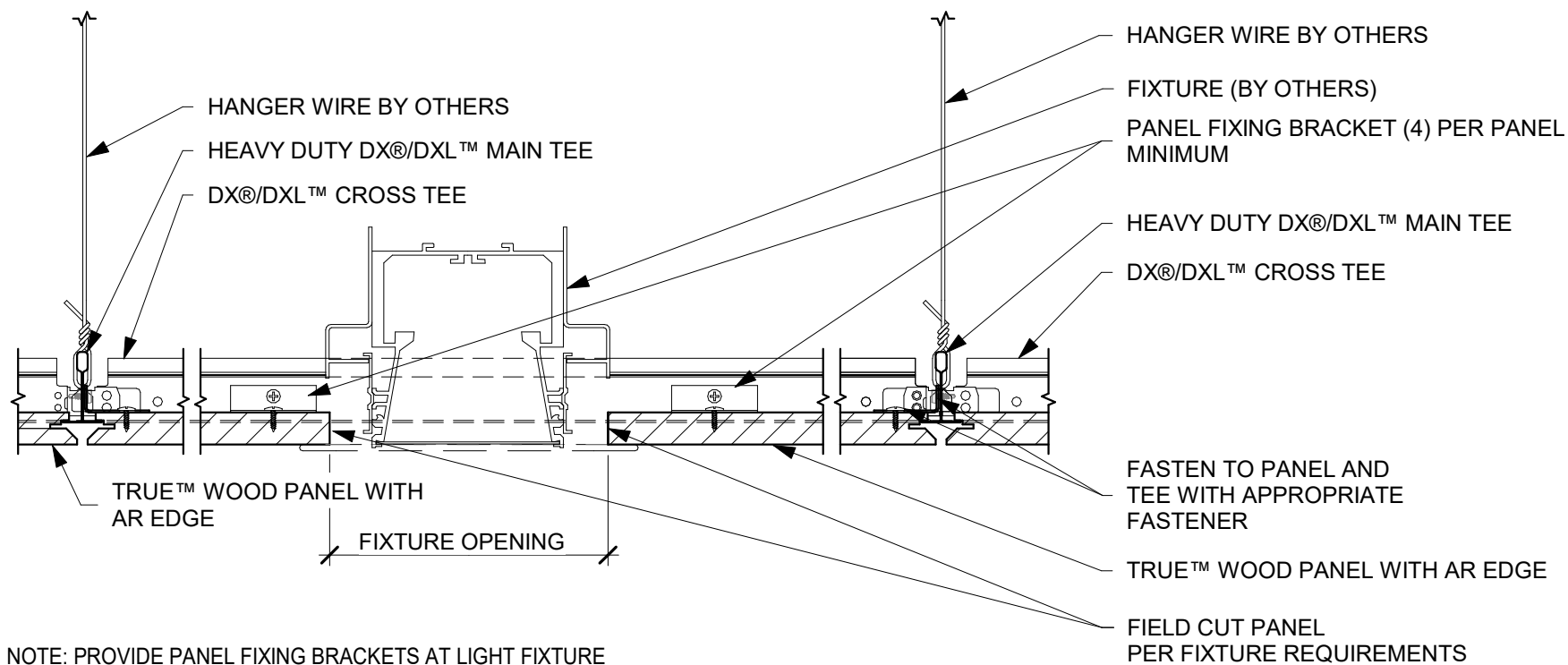
SHEET INFORMATION:

SCALE: 6" = 1'-0"

AR09

SECTION THRU LINEAR LIGHT FIXTURE WITH
 LOGIX™ YOKE - DX GRID - AR EDGE

DISCLAIMER: THE USG PRODUCT DETAILS CONTAINED HEREIN ARE INTENDED FOR USE AS PRODUCT REFERENCE MATERIAL BY ARCHITECTS, ENGINEERS, OTHER DESIGN PROFESSIONALS, CONTRACTORS, BUILDING CODE OFFICIALS, OR OTHER COMPETENT CONSTRUCTION INDUSTRY TRADE PROFESSIONALS HAVING AN INTEREST IN THE SELECTION, SPECIFICATION AND USE OF PRODUCTS MANUFACTURED BY THE SUBSIDIARIES OF USG CORPORATION. THE DRAWINGS ARE INTENDED SOLELY AS TECHNICAL SUPPORT INCIDENT TO THE SALE AND USE OF USG PRODUCTS AND NOT INTENDED TO BE A SUBSTITUTE FOR THE DESIGN REVIEW AND APPROVAL OF THE LICENSED DESIGN PROFESSIONALS FOR THE PROJECT. THESE MATERIALS MAY BE PRINTED AND/OR TRANSFERRED ELECTRONICALLY SOLELY AS NEEDED BY THE USER, BECAUSE CAD/ELECTRONIC FILES AND BIM (BUILDING INFORMATION MODELING) FILES CAN BE MODIFIED BY OTHER PARTIES, WITHOUT NOTICE OR INDICATION OF SUCH MODIFICATIONS, MODIFICATION OF USG PRODUCT CAD AND/OR BIM DRAWINGS IS THE SOLE RESPONSIBILITY OF THE DESIGN PROFESSIONAL. ©2021 USG CORPORATION.



NOTE: PROVIDE PANEL FIXING BRACKETS AT LIGHT FIXTURE OR WHEN PANELS ARE MODIFIED IN ANY WAY



USG Corporation
550 West Adams Street, Chicago, IL 60661
T. 800-USG4YOU www.USG.com

TRUE™ WOOD PANEL SYSTEM ACCESSIBLE REVEAL EDGE DETAILS

ISSUE RECORD:

09/21/21

REV: DATE:

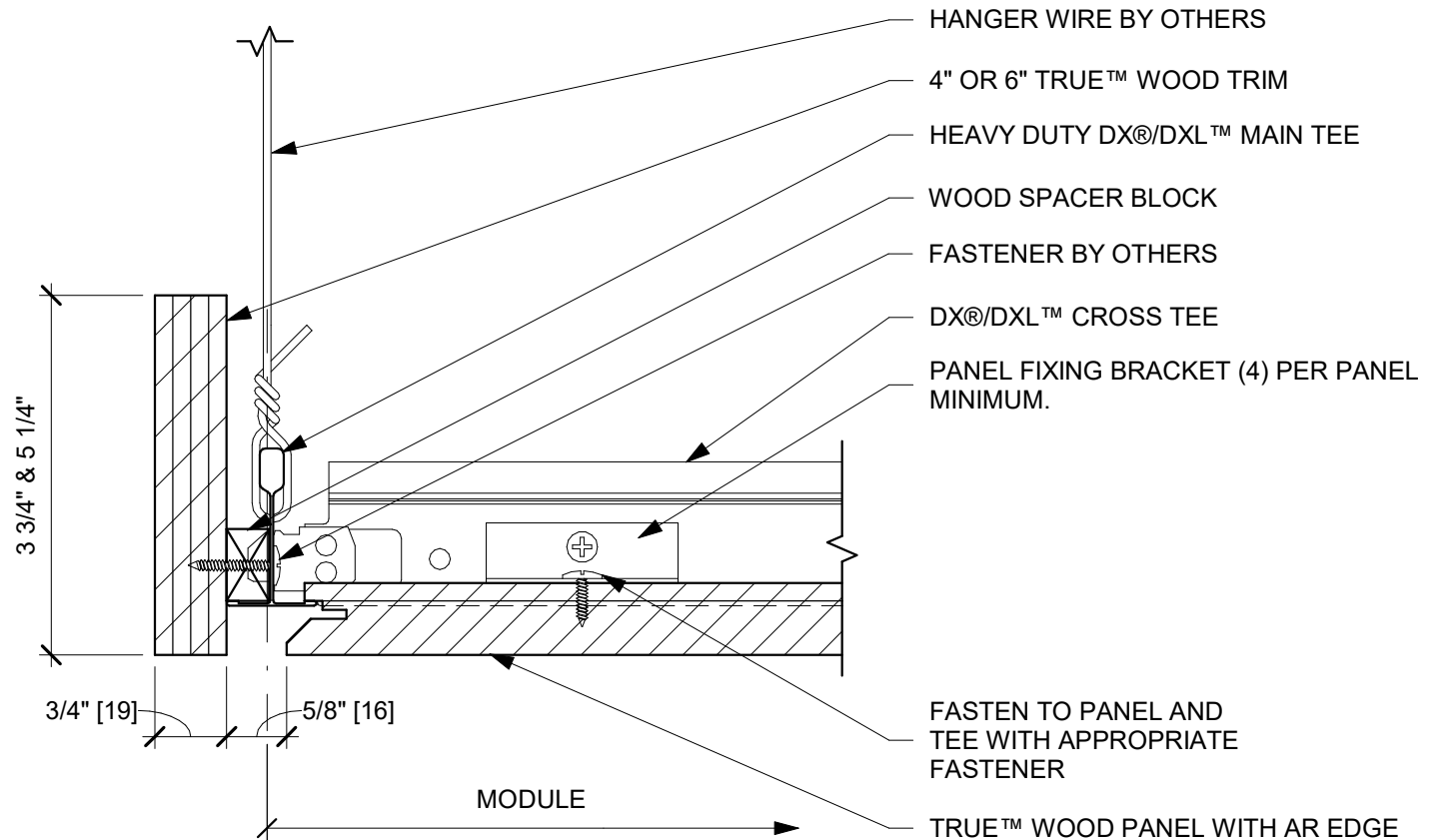
SHEET INFORMATION:

SCALE: 3" = 1'-0"

AR10

SECTION THRU LINEAR LIGHT FIXTURE WITH DX
GRID - AR EDGE - PANEL FIXING BRACKETS

DISCLAIMER: THE USG PRODUCT DETAILS CONTAINED HEREIN ARE INTENDED FOR USE AS PRODUCT REFERENCE MATERIAL BY ARCHITECTS, ENGINEERS, OTHER DESIGN PROFESSIONALS, CONTRACTORS, BUILDING CODE OFFICIALS, OR OTHER COMPETENT CONSTRUCTION INDUSTRY TRADE PROFESSIONALS HAVING AN INTEREST IN THE SELECTION, SPECIFICATION AND USE OF PRODUCTS MANUFACTURED BY THE SUBSIDIARIES OF USG CORPORATION. THE DRAWINGS ARE INTENDED SOLELY AS TECHNICAL SUPPORT INCIDENT TO THE SALE AND USE OF USG PRODUCTS AND NOT INTENDED TO BE A SUBSTITUTE FOR THE DESIGN REVIEW AND APPROVAL OF THE LICENSED DESIGN PROFESSIONALS FOR THE PROJECT. THESE MATERIALS MAY BE PRINTED AND/OR TRANSFERRED ELECTRONICALLY SOLELY AS NEEDED BY THE USER, BECAUSE CAD/ELECTRONIC FILES AND BIM (BUILDING INFORMATION MODELING) FILES CAN BE MODIFIED BY OTHER PARTIES, WITHOUT NOTICE OR INDICATION OF SUCH MODIFICATIONS, MODIFICATION OF USG PRODUCT CAD AND/OR BIM DRAWINGS IS THE SOLE RESPONSIBILITY OF THE DESIGN PROFESSIONAL. ©2021 USG CORPORATION.



USG Corporation
 550 West Adams Street, Chicago, IL 60661
 T. 800-USG4YOU www.USG.com

TRUE™ WOOD PANEL SYSTEM ACCESSIBLE REVEAL EDGE DETAILS

ISSUE RECORD:

09/21/21

REV: DATE:

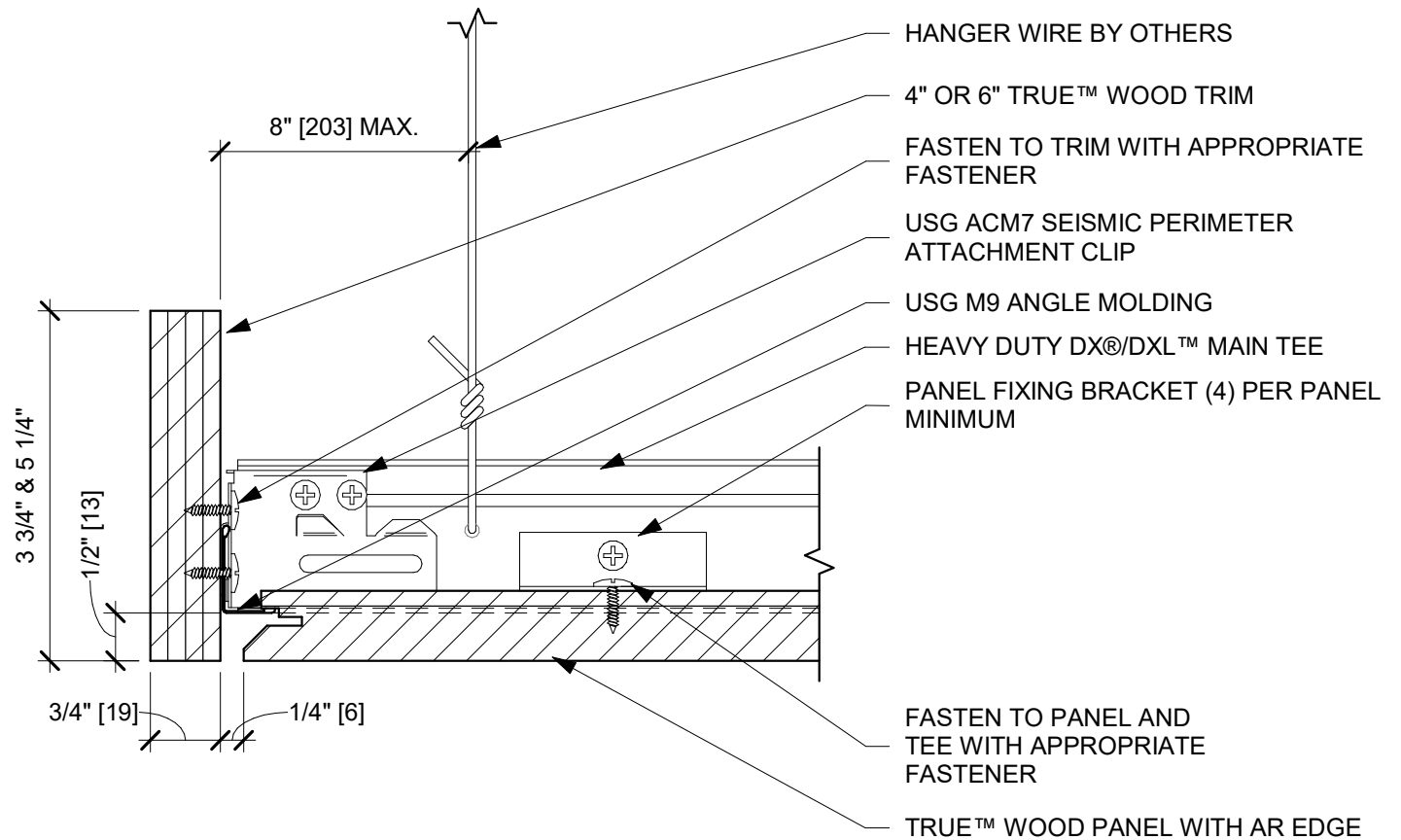
SHEET INFORMATION:

SCALE: 6" = 1'-0"

AR11

PERIMETER ON MODULE - DX GRID - AR EDGE -
 TRUE™ WOOD TRIM

DISCLAIMER: THE USG PRODUCT DETAILS CONTAINED HEREIN ARE INTENDED FOR USE AS PRODUCT REFERENCE MATERIAL BY ARCHITECTS, ENGINEERS, OTHER DESIGN PROFESSIONALS, CONTRACTORS, BUILDING CODE OFFICIALS, OR OTHER COMPETENT CONSTRUCTION INDUSTRY TRADE PROFESSIONALS HAVING AN INTEREST IN THE SELECTION, SPECIFICATION AND USE OF PRODUCTS MANUFACTURED BY THE SUBSIDIARIES OF USG CORPORATION. THE DRAWINGS ARE INTENDED SOLELY AS TECHNICAL SUPPORT INCIDENT TO THE SALE AND USE OF USG PRODUCTS AND NOT INTENDED TO BE A SUBSTITUTE FOR THE DESIGN REVIEW AND APPROVAL OF THE LICENSED DESIGN PROFESSIONALS FOR THE PROJECT. THESE MATERIALS MAY BE PRINTED AND/OR TRANSFERRED ELECTRONICALLY SOLELY AS NEEDED BY THE USER, BECAUSE CAD/ELECTRONIC FILES AND BIM (BUILDING INFORMATION MODELING) FILES CAN BE MODIFIED BY OTHER PARTIES, WITHOUT NOTICE OR INDICATION OF SUCH MODIFICATIONS, MODIFICATION OF USG PRODUCT CAD AND/OR BIM DRAWINGS IS THE SOLE RESPONSIBILITY OF THE DESIGN PROFESSIONAL. ©2021 USG CORPORATION.



NOTE: PROVIDE PANEL FIXING BRACKETS AT PERIMETER WHEN PANELS DO NOT ENGAGE ON ALL 4 SIDES WITH GRID OR WHEN PANELS ARE MODIFIED IN ANY WAY



USG Corporation
550 West Adams Street, Chicago, IL 60661
T. 800-USG4YOU www.USG.com

TRUE™ WOOD PANEL SYSTEM ACCESSIBLE REVEAL EDGE DETAILS

ISSUE RECORD:

09/21/21

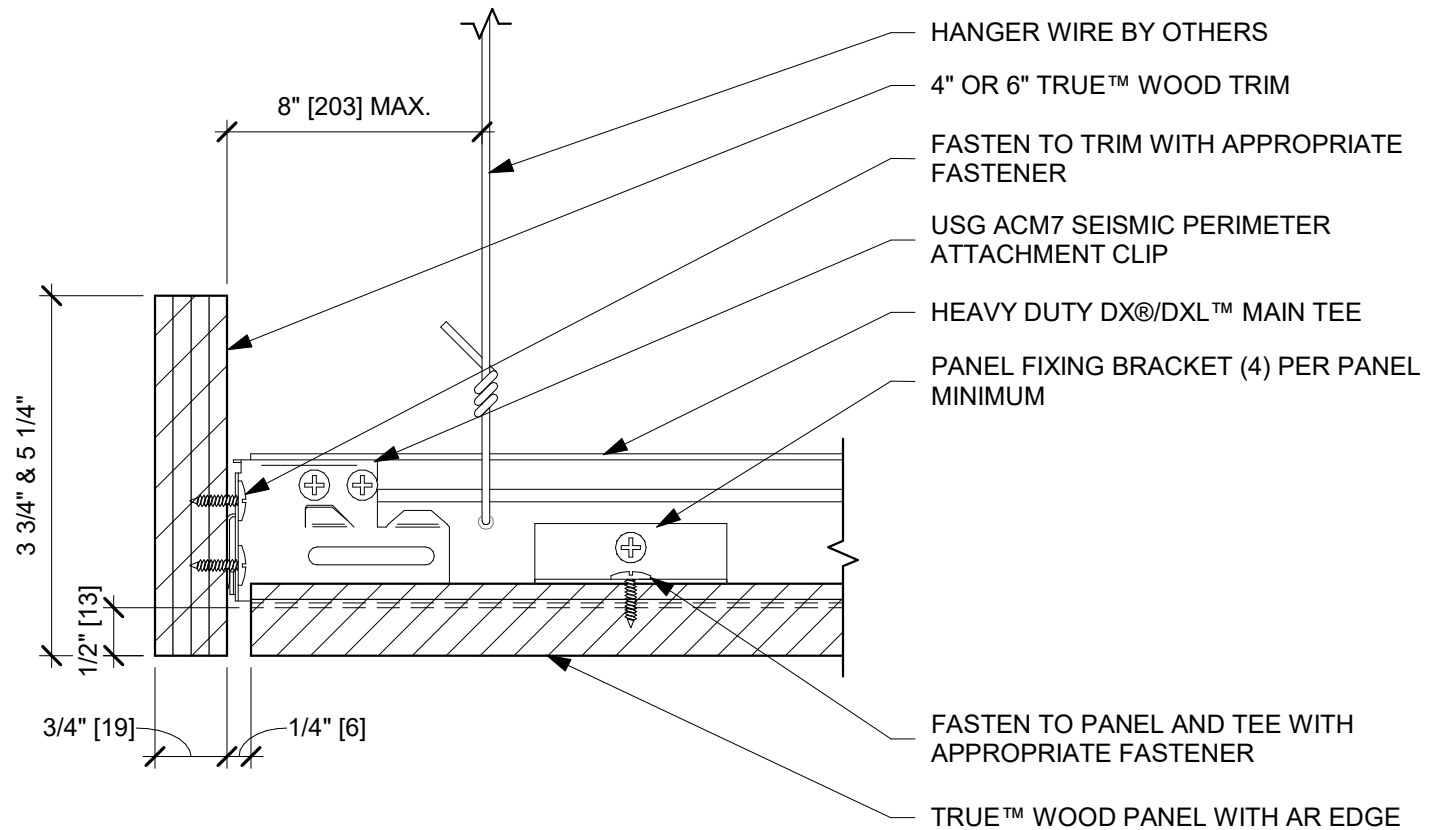
REV: DATE:

SHEET INFORMATION:

SCALE: 6" = 1'-0"

AR12
PERIMETER ON MODULE - DX GRID - AR EDGE -
TRUE™ WOOD TRIM

DISCLAIMER: THE USG PRODUCT DETAILS CONTAINED HEREIN ARE INTENDED FOR USE AS PRODUCT REFERENCE MATERIAL BY ARCHITECTS, ENGINEERS, OTHER DESIGN PROFESSIONALS, CONTRACTORS, BUILDING CODE OFFICIALS, OR OTHER COMPETENT CONSTRUCTION INDUSTRY TRADE PROFESSIONALS HAVING AN INTEREST IN THE SELECTION, SPECIFICATION AND USE OF PRODUCTS MANUFACTURED BY THE SUBSIDIARIES OF USG CORPORATION. THE DRAWINGS ARE INTENDED SOLELY AS TECHNICAL SUPPORT INCIDENT TO THE SALE AND USE OF USG PRODUCTS AND NOT INTENDED TO BE A SUBSTITUTE FOR THE DESIGN REVIEW AND APPROVAL OF THE LICENSED DESIGN PROFESSIONALS FOR THE PROJECT. THESE MATERIALS MAY BE PRINTED AND/OR TRANSFERRED ELECTRONICALLY SOLELY AS NEEDED BY THE USER. BECAUSE CAD/ELECTRONIC FILES AND BIM (BUILDING INFORMATION MODELING) FILES CAN BE MODIFIED BY OTHER PARTIES, WITHOUT NOTICE OR INDICATION OF SUCH MODIFICATIONS, MODIFICATION OF USG PRODUCT CAD AND/OR BIM DRAWINGS IS THE SOLE RESPONSIBILITY OF THE DESIGN PROFESSIONAL. ©2021 USG CORPORATION.



NOTE: PROVIDE PANEL FIXING BRACKETS AT PERIMETER WHEN PANELS DO NOT ENGAGE ON ALL 4 SIDES WITH GRID OR WHEN PANELS ARE MODIFIED IN ANY WAY



USG Corporation
550 West Adams Street, Chicago, IL 60661
T. 800-USG4YOU www.USG.com

TRUE™ WOOD PANEL SYSTEM ACCESSIBLE REVEAL EDGE DETAILS

ISSUE RECORD:

09/21/21

REV: DATE:

SHEET INFORMATION:

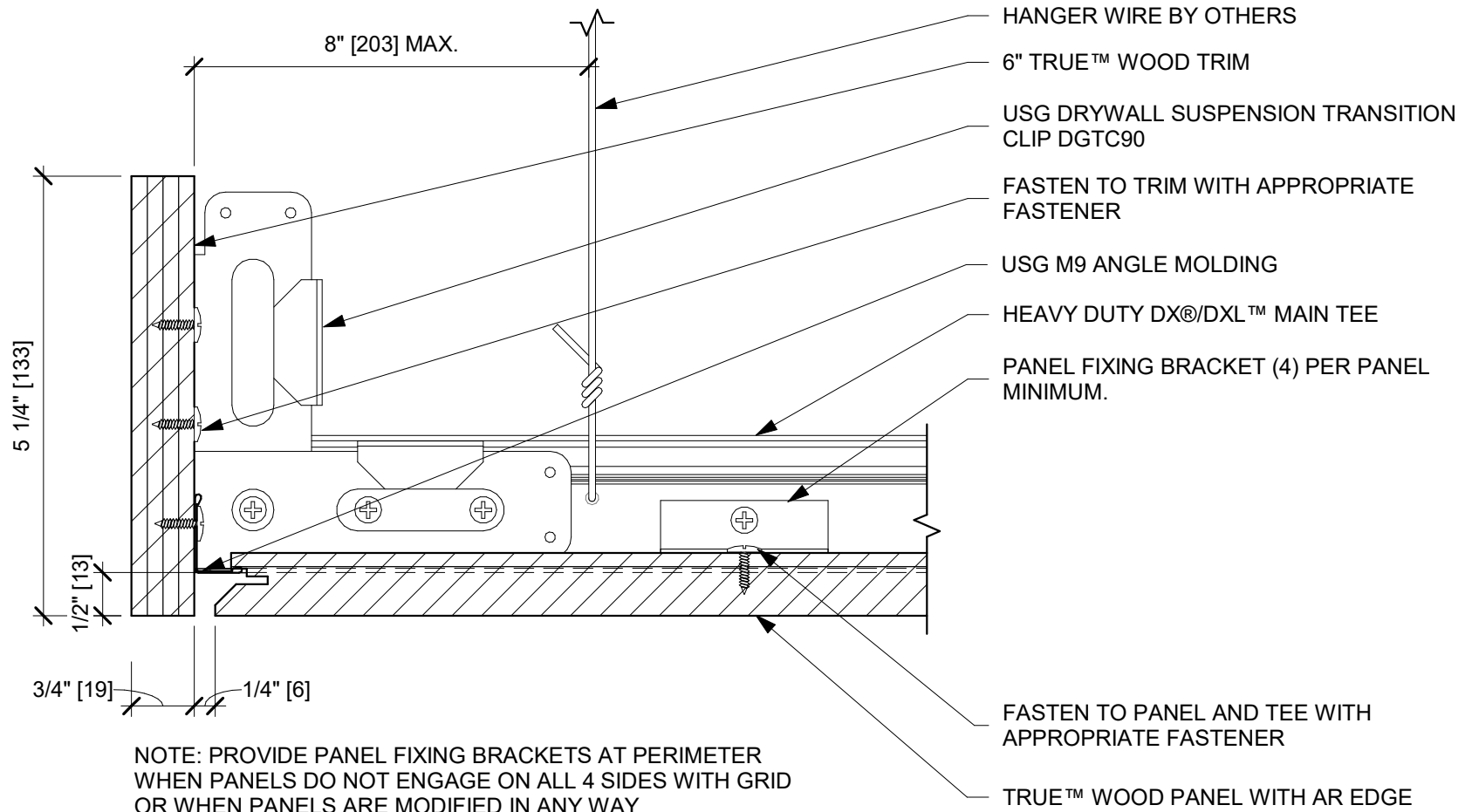
SCALE: 6" = 1'-0"

AR13

PERIMETER OFF MODULE - DX GRID - AR EDGE

- TRUE™ WOOD TRIM

DISCLAIMER: THE USG PRODUCT DETAILS CONTAINED HEREIN ARE INTENDED FOR USE AS PRODUCT REFERENCE MATERIAL BY ARCHITECTS, ENGINEERS, OTHER DESIGN PROFESSIONALS, CONTRACTORS, BUILDING CODE OFFICIALS, OR OTHER COMPETENT CONSTRUCTION INDUSTRY TRADE PROFESSIONALS HAVING AN INTEREST IN THE SELECTION, SPECIFICATION AND USE OF PRODUCTS MANUFACTURED BY THE SUBSIDIARIES OF USG CORPORATION. THE DRAWINGS ARE INTENDED SOLELY AS TECHNICAL SUPPORT INCIDENT TO THE SALE AND USE OF USG PRODUCTS AND NOT INTENDED TO BE A SUBSTITUTE FOR THE DESIGN REVIEW AND APPROVAL OF THE LICENSED DESIGN PROFESSIONALS FOR THE PROJECT. THESE MATERIALS MAY BE PRINTED AND/OR TRANSFERRED ELECTRONICALLY SOLELY AS NEEDED BY THE USER, BECAUSE CAD/ELECTRONIC FILES AND BIM (BUILDING INFORMATION MODELING) FILES CAN BE MODIFIED BY OTHER PARTIES, WITHOUT NOTICE OR INDICATION OF SUCH MODIFICATIONS, MODIFICATION OF USG PRODUCT CAD AND/OR BIM DRAWINGS IS THE SOLE RESPONSIBILITY OF THE DESIGN PROFESSIONAL. ©2021 USG CORPORATION.



USG Corporation
 550 West Adams Street, Chicago, IL 60661
 T. 800-USG4YOU www.USG.com

TRUE™ WOOD PANEL SYSTEM ACCESSIBLE REVEAL EDGE DETAILS

ISSUE RECORD:

09/21/21

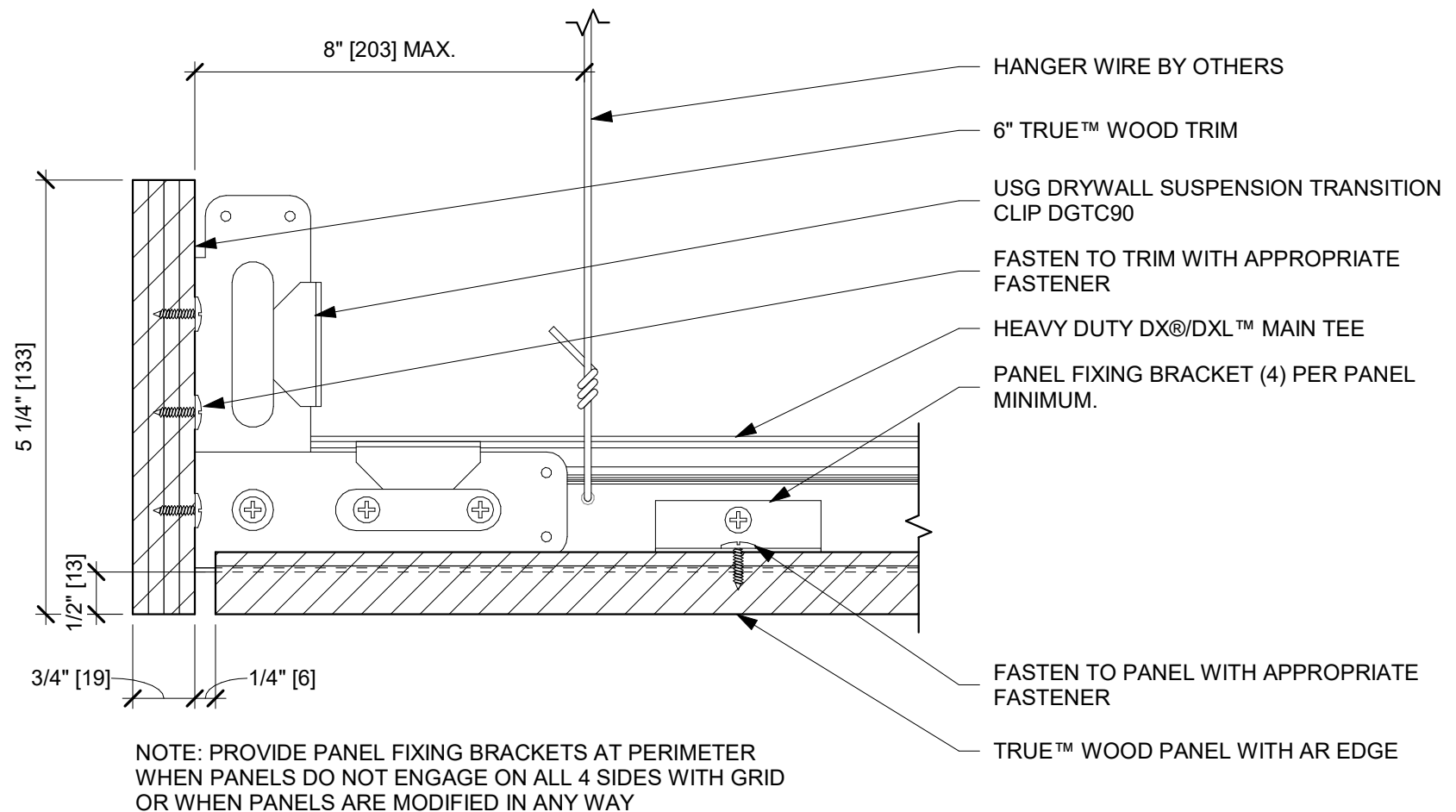
REV: DATE:

SHEET INFORMATION:

SCALE: 6" = 1'-0"

AR14
 PERIMETER ON MODULE - AR EDGE - TRUE™
 WOOD TRIM

DISCLAIMER: THE USG PRODUCT DETAILS CONTAINED HEREIN ARE INTENDED FOR USE AS PRODUCT REFERENCE MATERIAL BY ARCHITECTS, ENGINEERS, OTHER DESIGN PROFESSIONALS, CONTRACTORS, BUILDING CODE OFFICIALS, OR OTHER COMPETENT CONSTRUCTION INDUSTRY TRADE PROFESSIONALS HAVING AN INTEREST IN THE SELECTION, SPECIFICATION AND USE OF PRODUCTS MANUFACTURED BY THE SUBSIDIARIES OF USG CORPORATION. THE DRAWINGS ARE INTENDED SOLELY AS TECHNICAL SUPPORT INCIDENT TO THE SALE AND USE OF USG PRODUCTS AND NOT INTENDED TO BE A SUBSTITUTE FOR THE DESIGN REVIEW AND APPROVAL OF THE LICENSED DESIGN PROFESSIONALS FOR THE PROJECT. THESE MATERIALS MAY BE PRINTED AND/OR TRANSFERRED ELECTRONICALLY SOLELY AS NEEDED BY THE USER, BECAUSE CAD/ELECTRONIC FILES AND BIM (BUILDING INFORMATION MODELING) FILES CAN BE MODIFIED BY OTHER PARTIES, WITHOUT NOTICE OR INDICATION OF SUCH MODIFICATIONS, MODIFICATION OF USG PRODUCT CAD AND/OR BIM DRAWINGS IS THE SOLE RESPONSIBILITY OF THE DESIGN PROFESSIONAL. ©2021 USG CORPORATION.



USG Corporation
 550 West Adams Street, Chicago, IL 60661
 T. 800-USG4YOU www.USG.com

TRUE™ WOOD PANEL SYSTEM ACCESSIBLE REVEAL EDGE DETAILS

ISSUE RECORD:

09/21/21

REV: DATE:

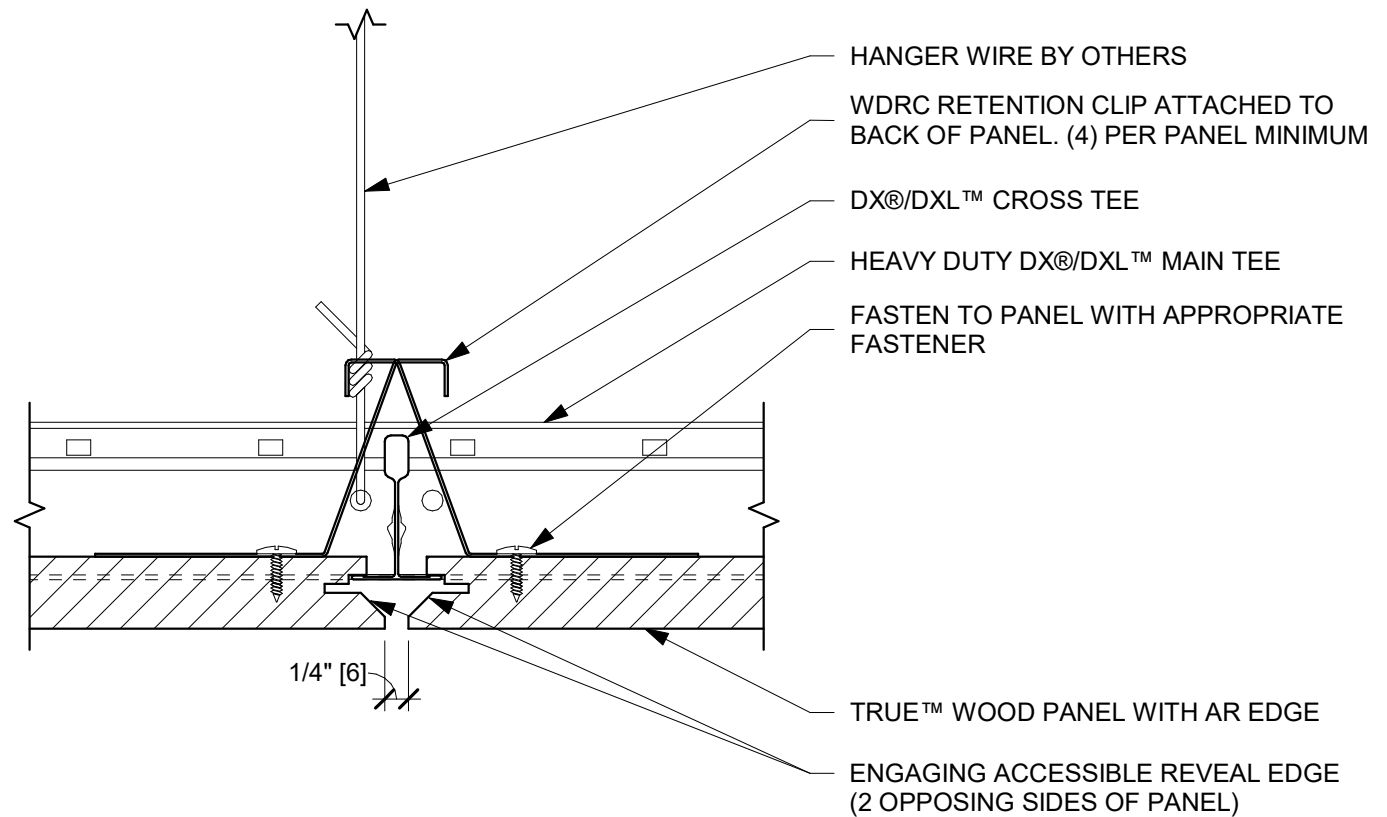
SHEET INFORMATION:

SCALE: 6" = 1'-0"

AR15

PERIMETER OFF MODULE - AR EDGE - TRUE™
 WOOD TRIM

DISCLAIMER: THE USG PRODUCT DETAILS CONTAINED HEREIN ARE INTENDED FOR USE AS PRODUCT REFERENCE MATERIAL BY ARCHITECTS, ENGINEERS, OTHER DESIGN PROFESSIONALS, CONTRACTORS, BUILDING CODE OFFICIALS, OR OTHER COMPETENT CONSTRUCTION INDUSTRY TRADE PROFESSIONALS HAVING AN INTEREST IN THE SELECTION, SPECIFICATION AND USE OF PRODUCTS MANUFACTURED BY THE SUBSIDIARIES OF USG CORPORATION. THE DRAWINGS ARE INTENDED SOLELY AS TECHNICAL SUPPORT INCIDENT TO THE SALE AND USE OF USG PRODUCTS AND NOT INTENDED TO BE A SUBSTITUTE FOR THE DESIGN REVIEW AND APPROVAL OF THE LICENSED DESIGN PROFESSIONALS FOR THE PROJECT. THESE MATERIALS MAY BE PRINTED AND/OR TRANSFERRED ELECTRONICALLY SOLELY AS NEEDED BY THE USER, BECAUSE CAD/ELECTRONIC FILES AND BIM (BUILDING INFORMATION MODELING) FILES CAN BE MODIFIED BY OTHER PARTIES, WITHOUT NOTICE OR INDICATION OF SUCH MODIFICATIONS, MODIFICATION OF USG PRODUCT CAD AND/OR BIM DRAWINGS IS THE SOLE RESPONSIBILITY OF THE DESIGN PROFESSIONAL. ©2021 USG CORPORATION.



NOTE: PROVIDE PANEL FIXING BRACKETS AT PERIMETER WHEN PANELS DO NOT ENGAGE ON ALL 4 SIDES WITH GRID OR WHEN PANELS ARE MODIFIED IN ANY WAY



USG Corporation
550 West Adams Street, Chicago, IL 60661
T. 800-USG4YOU www.USG.com

TRUE™ WOOD PANEL SYSTEM ACCESSIBLE REVEAL EDGE DETAILS

ISSUE RECORD:

09/21/21

REV: DATE:

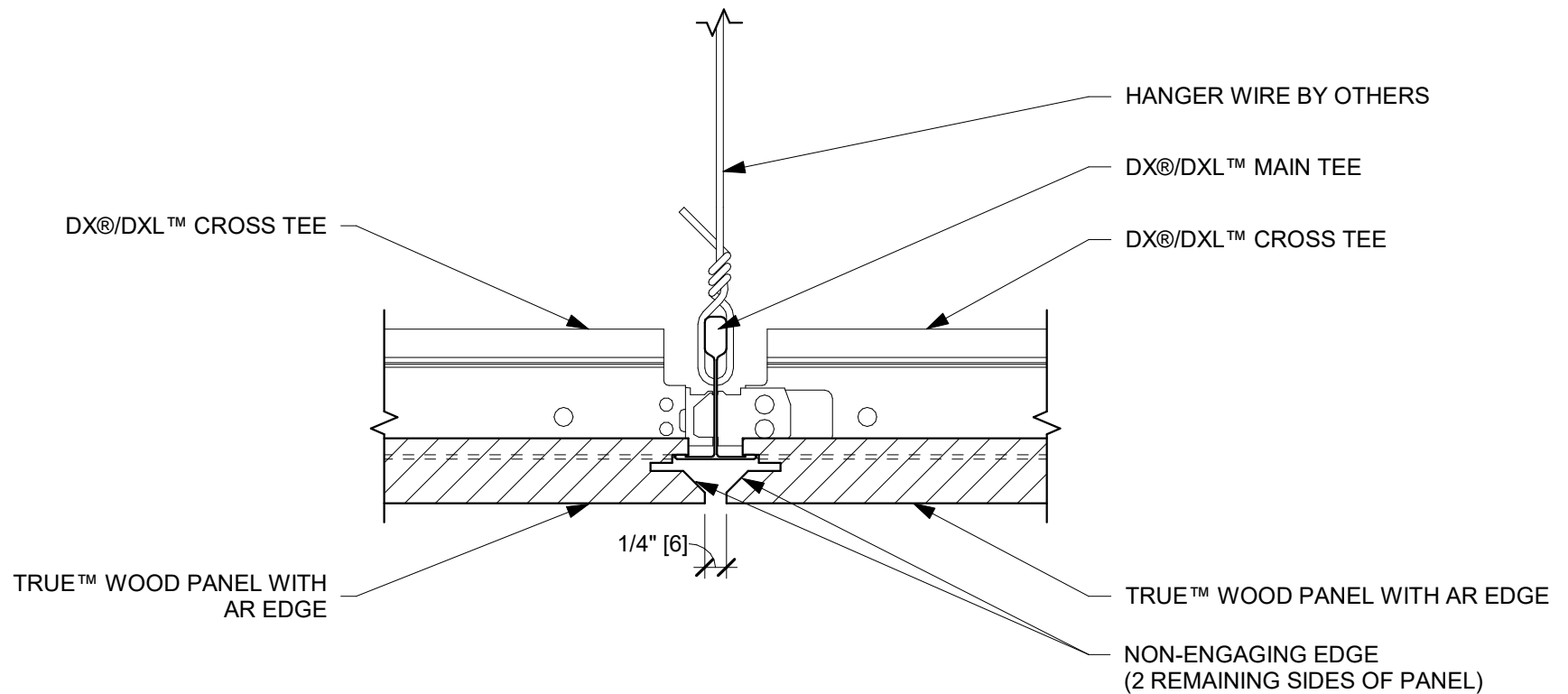
SHEET INFORMATION:

SCALE: 6" = 1'-0"

AR16

SECTION THRU CROSS TEE WITH DX GRID - AR
EDGE

DISCLAIMER: THE USG PRODUCT DETAILS CONTAINED HEREIN ARE INTENDED FOR USE AS PRODUCT REFERENCE MATERIAL BY ARCHITECTS, ENGINEERS, OTHER DESIGN PROFESSIONALS, CONTRACTORS, BUILDING CODE OFFICIALS, OR OTHER COMPETENT CONSTRUCTION INDUSTRY TRADE PROFESSIONALS HAVING AN INTEREST IN THE SELECTION, SPECIFICATION AND USE OF PRODUCTS MANUFACTURED BY THE SUBSIDIARIES OF USG CORPORATION. THE DRAWINGS ARE INTENDED SOLELY AS TECHNICAL SUPPORT INCIDENT TO THE SALE AND USE OF USG PRODUCTS AND NOT INTENDED TO BE A SUBSTITUTE FOR THE DESIGN REVIEW AND APPROVAL OF THE LICENSED DESIGN PROFESSIONALS FOR THE PROJECT. THESE MATERIALS MAY BE PRINTED AND/OR TRANSFERRED ELECTRONICALLY SOLELY AS NEEDED BY THE USER. BECAUSE CAD/ELECTRONIC FILES AND BIM (BUILDING INFORMATION MODELING) FILES CAN BE MODIFIED BY OTHER PARTIES, WITHOUT NOTICE OR INDICATION OF SUCH MODIFICATIONS, MODIFICATION OF USG PRODUCT CAD AND/OR BIM DRAWINGS IS THE SOLE RESPONSIBILITY OF THE DESIGN PROFESSIONAL. ©2021 USG CORPORATION.



NOTE: PROVIDE PANEL FIXING BRACKETS AT PERIMETER
WHEN PANELS DO NOT ENGAGE ON ALL 4 SIDES WITH GRID
OR WHEN PANELS ARE MODIFIED IN ANY WAY



USG Corporation
550 West Adams Street, Chicago, IL 60661
T. 800-USG4YOU www.USG.com

TRUE™ WOOD PANEL SYSTEM ACCESSIBLE REVEAL EDGE DETAILS

ISSUE RECORD:

09/21/21

REV: DATE:

SHEET INFORMATION:

SCALE: 6" = 1'-0"

AR17

SECTION THRU MAIN TEE WITH DX GRID - AR
EDGE

DISCLAIMER: THE USG PRODUCT DETAILS CONTAINED HEREIN ARE INTENDED FOR USE AS PRODUCT REFERENCE MATERIAL BY ARCHITECTS, ENGINEERS, OTHER DESIGN PROFESSIONALS, CONTRACTORS, BUILDING CODE OFFICIALS, OR OTHER COMPETENT CONSTRUCTION INDUSTRY TRADE PROFESSIONALS HAVING AN INTEREST IN THE SELECTION, SPECIFICATION AND USE OF PRODUCTS MANUFACTURED BY THE SUBSIDIARIES OF USG CORPORATION. THE DRAWINGS ARE INTENDED SOLELY AS TECHNICAL SUPPORT INCIDENT TO THE SALE AND USE OF USG PRODUCTS AND NOT INTENDED TO BE A SUBSTITUTE FOR THE DESIGN REVIEW AND APPROVAL OF THE LICENSED DESIGN PROFESSIONALS FOR THE PROJECT. THESE MATERIALS MAY BE PRINTED AND/OR TRANSFERRED ELECTRONICALLY SOLELY AS NEEDED BY THE USER, BECAUSE CAD/ELECTRONIC FILES AND BIM (BUILDING INFORMATION MODELING) FILES CAN BE MODIFIED BY OTHER PARTIES, WITHOUT NOTICE OR INDICATION OF SUCH MODIFICATIONS, MODIFICATION OF USG PRODUCT CAD AND/OR BIM DRAWINGS IS THE SOLE RESPONSIBILITY OF THE DESIGN PROFESSIONAL. ©2021 USG CORPORATION.