

Sheet Number	Sheet Name	Current Revision Date
TW-WM-00	WALL MOUNT DETAILS SHEET LIST	
TW-WM-01	PARTIAL ELEVATION - FACE OF PANELS	
TW-WM-02	PARTIAL ELEVATION - BACK OF PANELS	
TW-WM-03	SECTION AT WALL BASE	
TW-WM-04	SECTION AT INTERMEDIATE PANEL	
TW-WM-05	SECTION AT FINISHED CEILING	
TW-WM-06	PERIMETER - WALL TO CEILING WITH TRUE™ WOOD PANELS	

## TRUE™ WOOD PANELS

### NOTES:

1. REFERENCE USG IC561 FOR INSTALLATION INSTRUCTIONS.
2. PANELS MAY BE FIELD-CUT AT WALL AND COLUMNS BUT OTHERWISE SHOULD BE USED IN FULL MODULES.
3. PANEL WILL DROP TO ENGAGE IN THE Z-CLIP. TAKE THIS INTO CONSIDERATION DURING LAYOUT.
4. FOR BEST INSTALLATION RESULTS, PRE-DRILL ALL HOLES AT PANEL PERIMETERS THROUGH PANEL AND SUSPENSION SYSTEM BEFORE INSTALLING FASTENER.



**USG Corporation**  
550 West Adams Street, Chicago, IL 60661  
T. 800-USG4YOU www.USG.com

## TRUE™ WOOD PANELS WALL MOUNT DETAILS WITH "Z-CLIP"

### ISSUE RECORD:

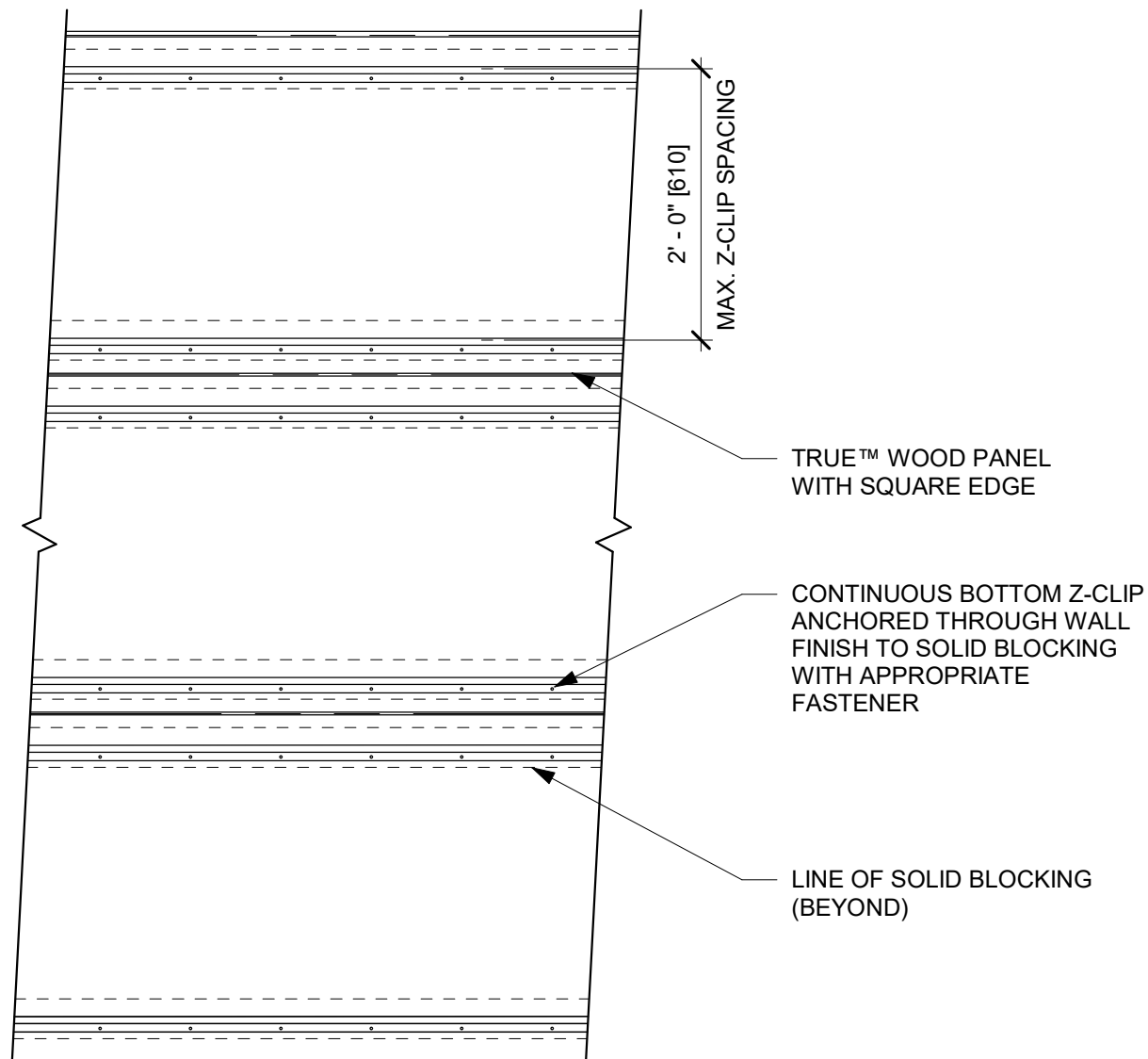
08/19/21

REV: DATE:

### SHEET INFORMATION:

SCALE:

**TW-WM-00**  
**WALL MOUNT DETAILS SHEET LIST**



**USG Corporation**  
550 West Adams Street, Chicago, IL 60661  
T. 800-USG4YOU www.USG.com

## TRUE™ WOOD PANELS WALL MOUNT DETAILS WITH "Z-CLIP"

ISSUE RECORD:

08/19/21

REV: DATE:

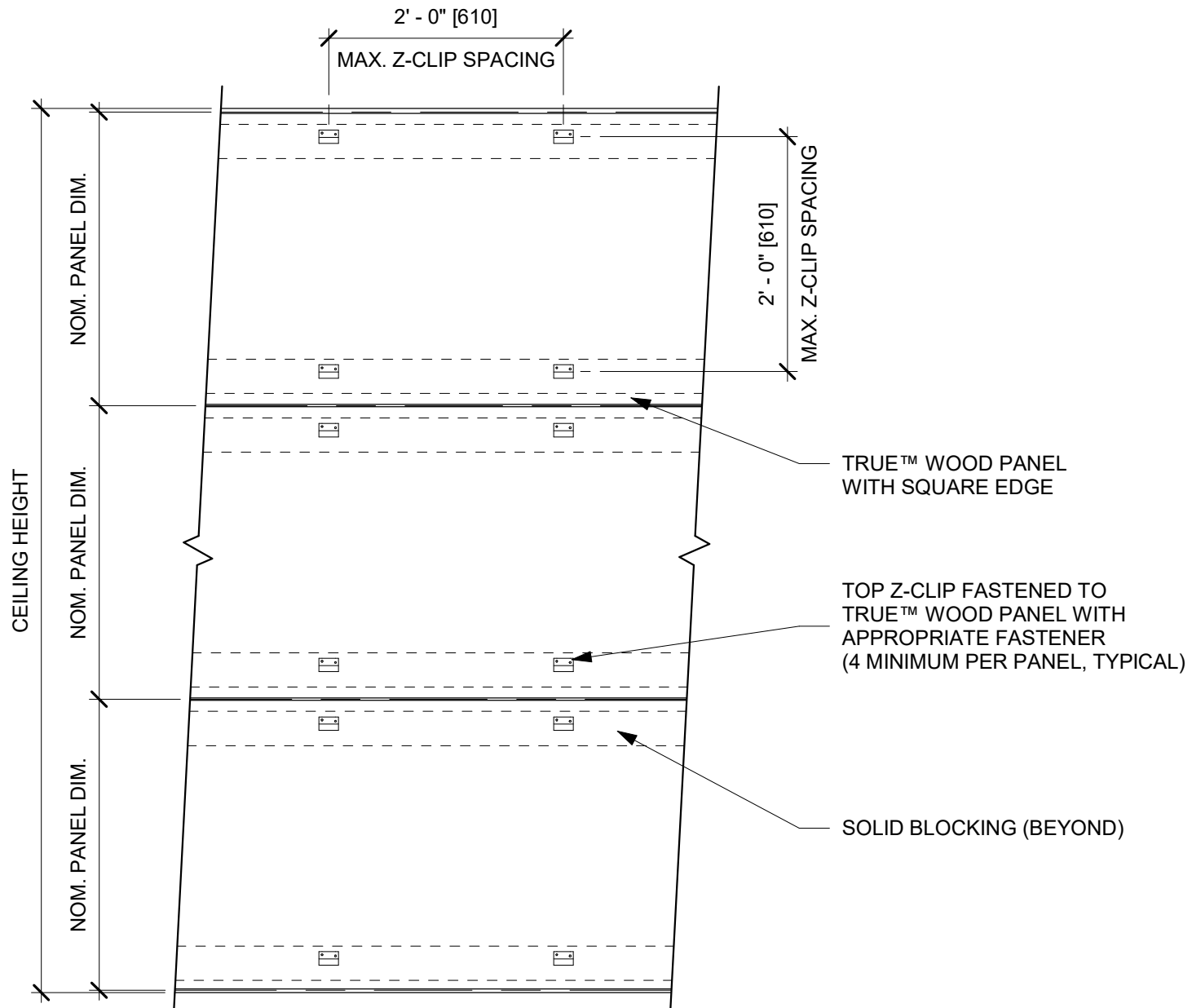
\_\_\_\_\_  
\_\_\_\_\_  
\_\_\_\_\_

SHEET INFORMATION:

SCALE: 3/4" = 1'-0"

**TW-WM-01**  
**PARTIAL ELEVATION - FACE OF**  
**PANELS**

DISCLAIMER: THE USG PRODUCT DETAILS CONTAINED HEREIN ARE INTENDED FOR USE AS PRODUCT REFERENCE MATERIAL BY ARCHITECTS, ENGINEERS, OTHER DESIGN PROFESSIONALS, CONTRACTORS, BUILDING CODE OFFICIALS, OR OTHER COMPETENT CONSTRUCTION INDUSTRY TRADE PROFESSIONALS HAVING AN INTEREST IN THE SELECTION, SPECIFICATION AND USE OF PRODUCTS MANUFACTURED BY THE SUBSIDIARIES OF USG CORPORATION. THE DRAWINGS ARE INTENDED SOLELY AS TECHNICAL SUPPORT INCIDENT TO THE SALE AND USE OF USG PRODUCTS AND NOT INTENDED TO BE A SUBSTITUTE FOR THE DESIGN REVIEW AND APPROVAL OF THE LICENSED DESIGN PROFESSIONALS FOR THE PROJECT. THESE MATERIALS MAY BE PRINTED AND/OR TRANSFERRED ELECTRONICALLY SOLELY AS NEEDED BY THE USER, BECAUSE CAD/ELECTRONIC FILES AND BIM (BUILDING INFORMATION MODELING) FILES CAN BE MODIFIED BY OTHER PARTIES, WITHOUT NOTICE OR INDICATION OF SUCH MODIFICATIONS, MODIFICATION OF USG PRODUCT CAD AND/OR BIM DRAWINGS IS THE SOLE RESPONSIBILITY OF THE DESIGN PROFESSIONAL. ©2021 USG CORPORATION.



**USG Corporation**  
 550 West Adams Street, Chicago, IL 60661  
 T. 800-USG4YOU www.USG.com

## TRUE™ WOOD PANELS WALL MOUNT DETAILS WITH "Z-CLIP"

ISSUE RECORD:

08/19/21

REV: DATE:

\_\_\_\_\_

\_\_\_\_\_

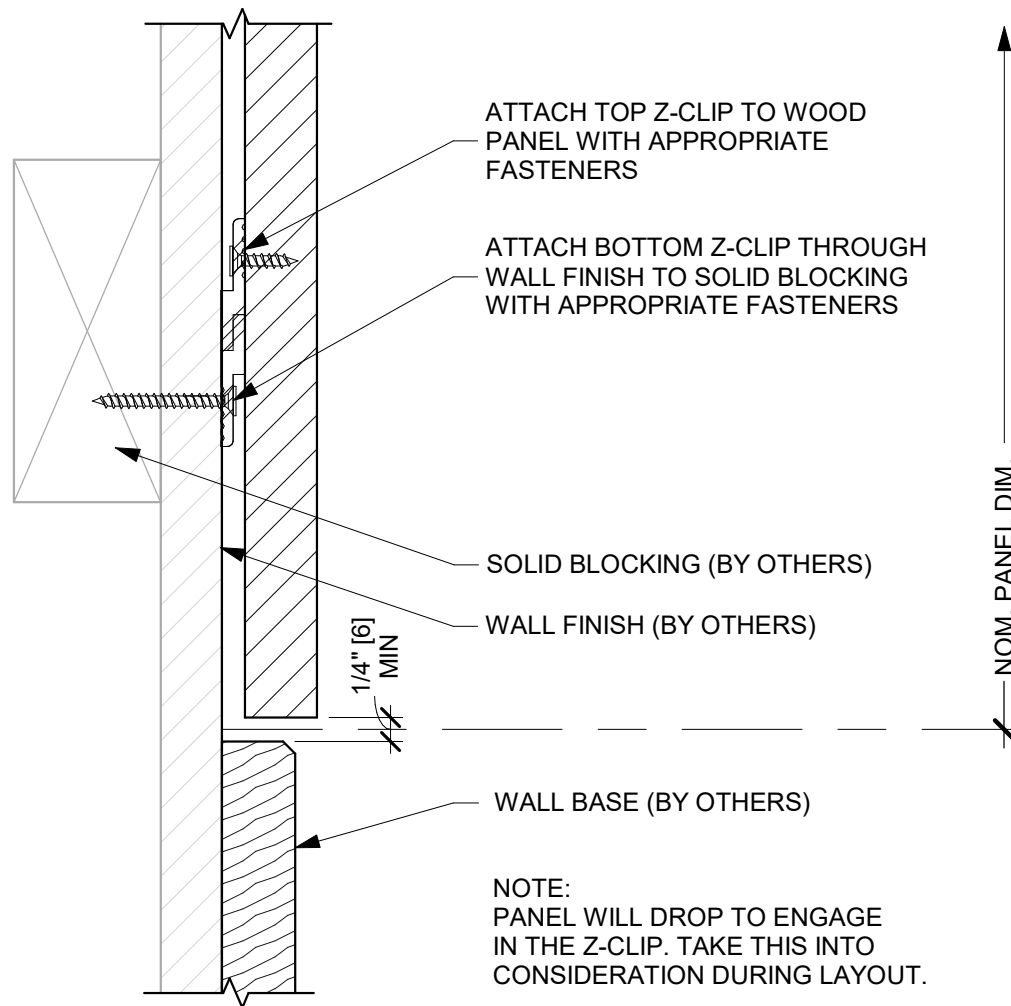
\_\_\_\_\_

SHEET INFORMATION:

SCALE: 3/4" = 1'-0"

**TW-WM-02**  
**PARTIAL ELEVATION - BACK OF**  
**PANELS**

DISCLAIMER: THE USG PRODUCT DETAILS CONTAINED HEREIN ARE INTENDED FOR USE AS PRODUCT REFERENCE MATERIAL BY ARCHITECTS, ENGINEERS, OTHER DESIGN PROFESSIONALS, CONTRACTORS, BUILDING CODE OFFICIALS, OR OTHER COMPETENT CONSTRUCTION INDUSTRY TRADE PROFESSIONALS HAVING AN INTEREST IN THE SELECTION, SPECIFICATION AND USE OF PRODUCTS MANUFACTURED BY THE SUBSIDIARIES OF USG CORPORATION. THE DRAWINGS ARE INTENDED SOLELY AS TECHNICAL SUPPORT INCIDENT TO THE SALE AND USE OF USG PRODUCTS AND NOT INTENDED TO BE A SUBSTITUTE FOR THE DESIGN REVIEW AND APPROVAL OF THE LICENSED DESIGN PROFESSIONALS FOR THE PROJECT. THESE MATERIALS MAY BE PRINTED AND/OR TRANSFERRED ELECTRONICALLY SOLELY AS NEEDED BY THE USER. BECAUSE CAD/ELECTRONIC FILES AND BIM (BUILDING INFORMATION MODELING) FILES CAN BE MODIFIED BY OTHER PARTIES, WITHOUT NOTICE OR INDICATION OF SUCH MODIFICATIONS, MODIFICATION OF USG PRODUCT CAD AND/OR BIM DRAWINGS IS THE SOLE RESPONSIBILITY OF THE DESIGN PROFESSIONAL. ©2021 USG CORPORATION.



**USG Corporation**  
550 West Adams Street, Chicago, IL 60661  
T. 800-USG4YOU www.USG.com

## TRUE™ WOOD PANELS WALL MOUNT DETAILS WITH "Z-CLIP"

ISSUE RECORD:

08/19/21

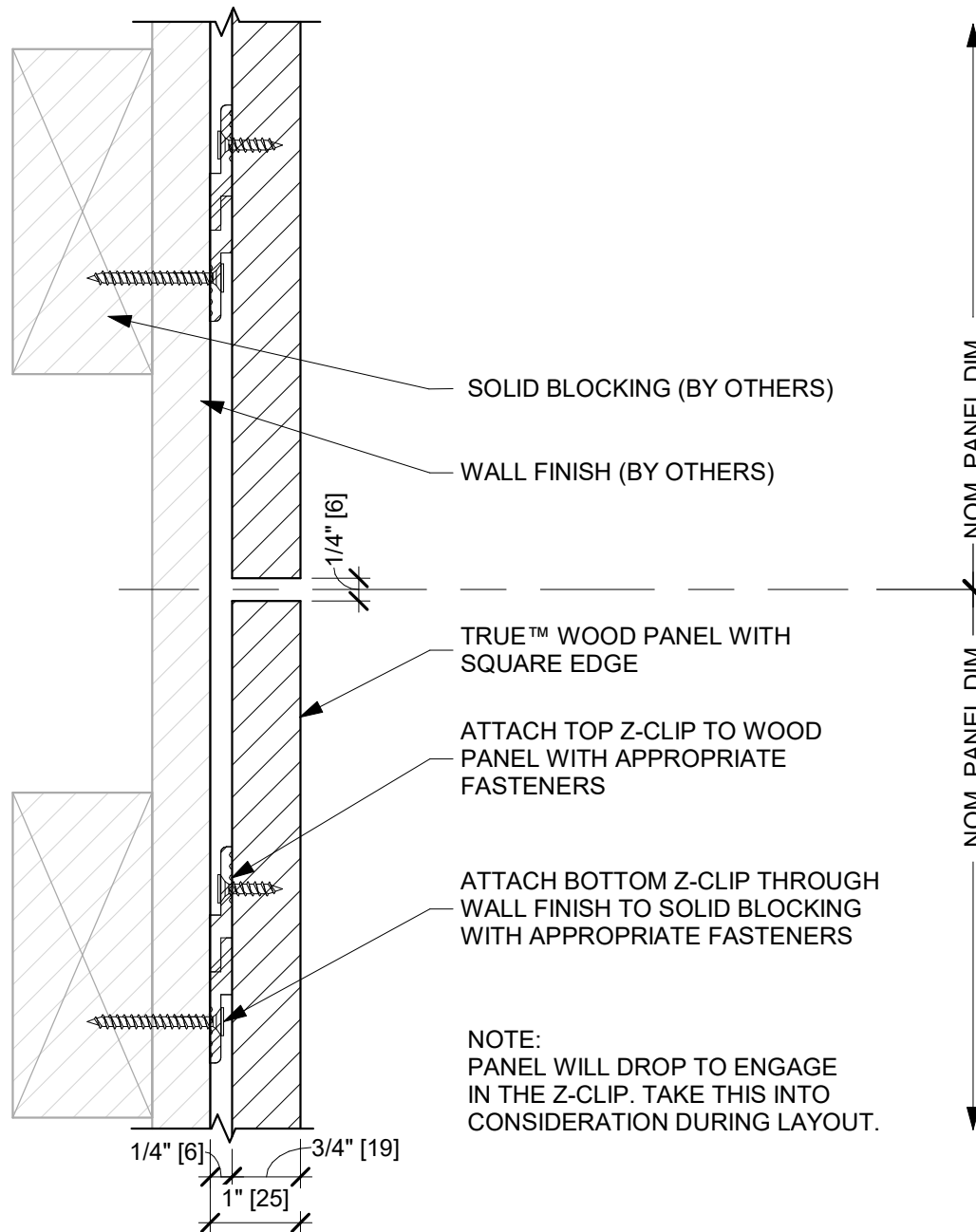
REV: DATE:

\_\_\_\_\_  
\_\_\_\_\_  
\_\_\_\_\_

SHEET INFORMATION:

SCALE: 6" = 1'-0"

**TW-WM-03**  
**SECTION AT WALL BASE**



NOTE:  
PANEL WILL DROP TO ENGAGE  
IN THE Z-CLIP. TAKE THIS INTO  
CONSIDERATION DURING LAYOUT.



**USG Corporation**  
550 West Adams Street, Chicago, IL 60661  
T. 800-USG4YOU www.USG.com

## TRUE™ WOOD PANELS WALL MOUNT DETAILS WITH "Z-CLIP"

ISSUE RECORD:

08/19/21

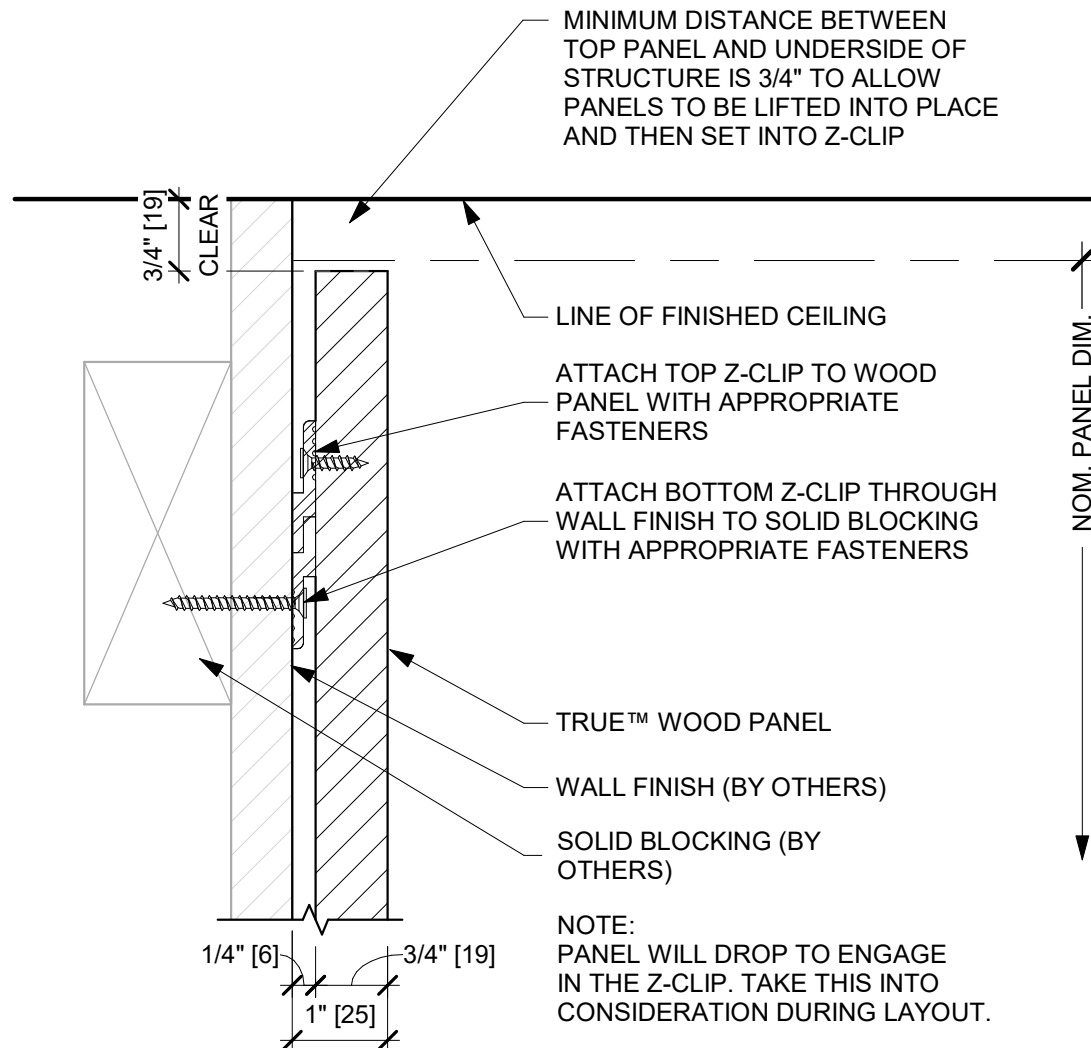
REV: DATE:

1

SHEET INFORMATION:

SCALE: 6" = 1'-0"

**TW-WM-04**  
SECTION AT INTERMEDIATE PANEL



**USG Corporation**  
550 West Adams Street, Chicago, IL 60661  
T. 800-USG4YOU www.USG.com

## TRUE™ WOOD PANELS WALL MOUNT DETAILS WITH "Z-CLIP"

ISSUE RECORD:

08/19/21

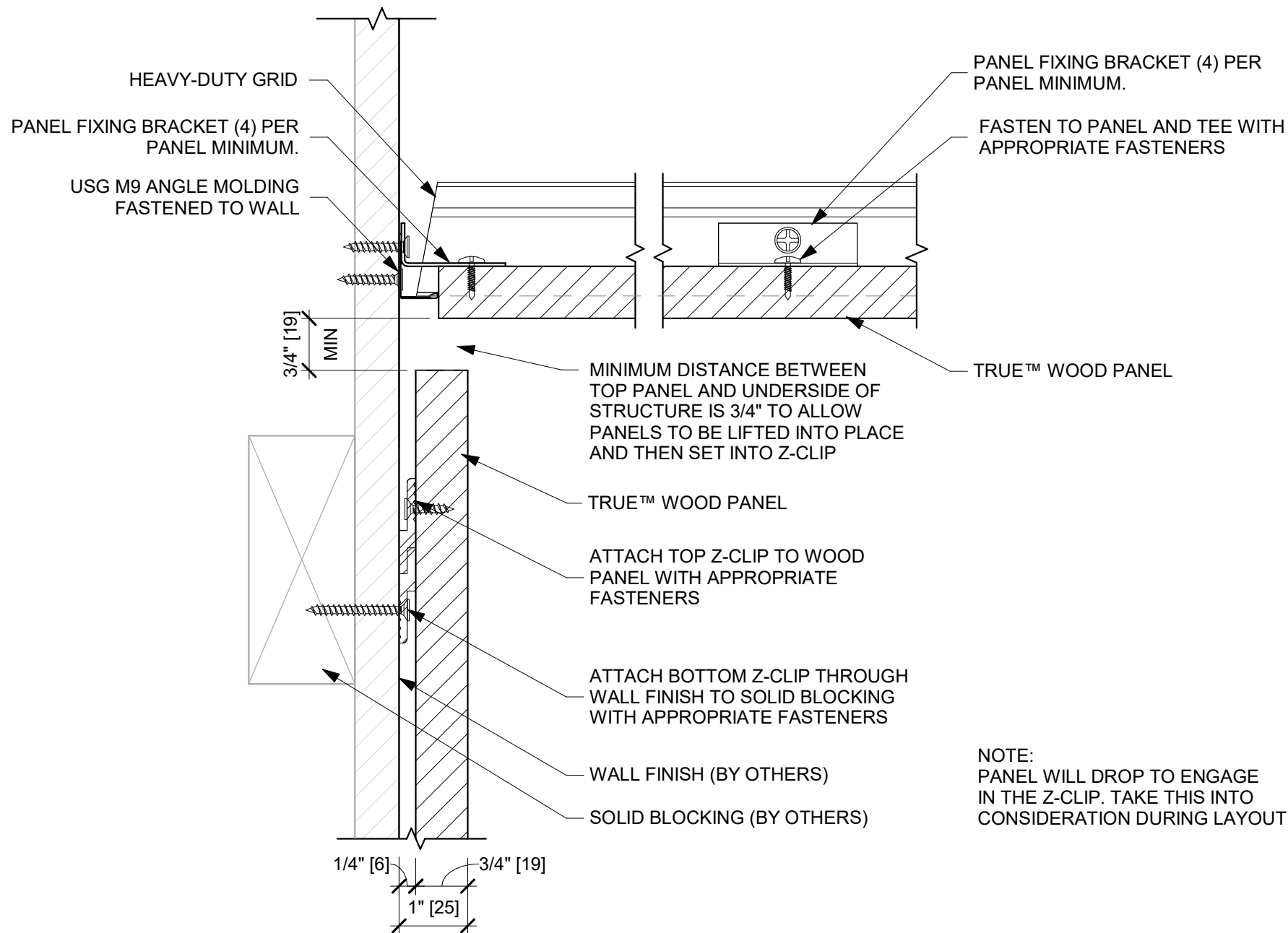
REV: DATE:

\_\_\_\_\_  
\_\_\_\_\_  
\_\_\_\_\_

SHEET INFORMATION:

SCALE: 6" = 1'-0"

**TW-WM-05**  
**SECTION AT FINISHED CEILING**



**USG Corporation**  
550 West Adams Street, Chicago, IL 60661  
T. 800-USG4YOU www.USG.com

## TRUE™ WOOD PANELS WALL MOUNT DETAILS WITH "Z-CLIP"

ISSUE RECORD:

08/19/21

REV: DATE:

\_\_\_\_\_

\_\_\_\_\_

\_\_\_\_\_

SHEET INFORMATION:

SCALE: 6" = 1'-0"

**TW-WM-06**

**PERIMETER - WALL TO CEILING WITH**

**TRUE™ WOOD PANELS**

DISCLAIMER: THE USG PRODUCT DETAILS CONTAINED HEREIN ARE INTENDED FOR USE AS PRODUCT REFERENCE MATERIAL BY ARCHITECTS, ENGINEERS, OTHER DESIGN PROFESSIONALS, CONTRACTORS, BUILDING CODE OFFICIALS, OR OTHER COMPETENT CONSTRUCTION INDUSTRY TRADE PROFESSIONALS HAVING AN INTEREST IN THE SELECTION, SPECIFICATION AND USE OF PRODUCTS MANUFACTURED BY THE SUBSIDIARIES OF USG CORPORATION. THE DRAWINGS ARE INTENDED SOLELY AS TECHNICAL SUPPORT INCIDENT TO THE SALE AND USE OF USG PRODUCTS AND NOT INTENDED TO BE A SUBSTITUTE FOR THE DESIGN REVIEW AND APPROVAL OF THE LICENSED DESIGN PROFESSIONALS FOR THE PROJECT. THESE MATERIALS MAY BE PRINTED AND/OR TRANSFERRED ELECTRONICALLY SOLELY AS NEEDED BY THE USER, BECAUSE CAD/ELECTRONIC FILES AND BIM (BUILDING INFORMATION MODELING) FILES CAN BE MODIFIED BY OTHER PARTIES, WITHOUT NOTICE OR INDICATION OF SUCH MODIFICATIONS, MODIFICATION OF USG PRODUCT CAD AND/OR BIM DRAWINGS IS THE SOLE RESPONSIBILITY OF THE DESIGN PROFESSIONAL. ©2021 USG CORPORATION.