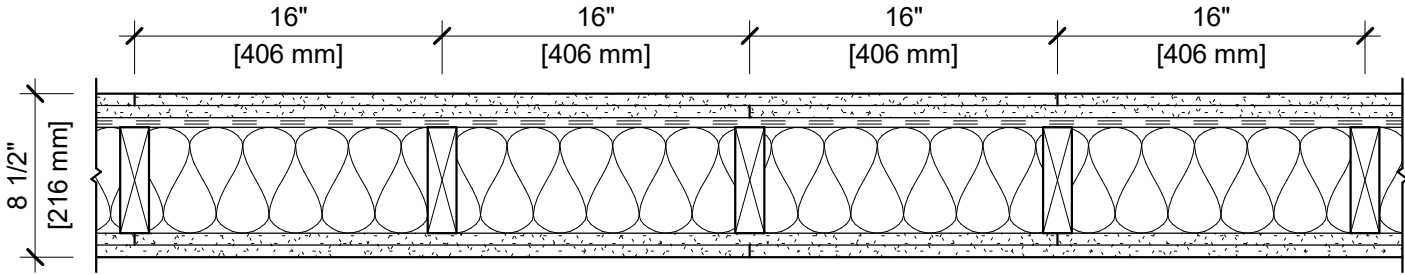


DESIGN NO.UL U301

FIRE RATING:
STC RATING:
SOUND TEST:
SYSTEM THICKNESS:
LOCATION:
FRAMING TYPE:

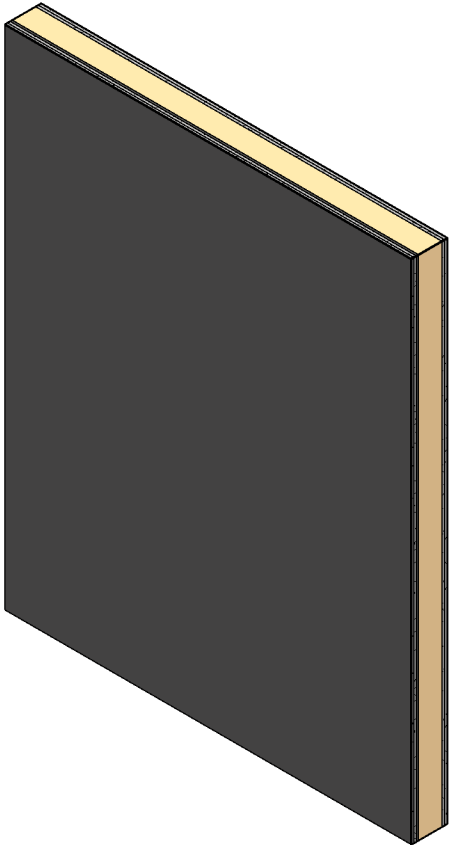
2 HOURS
56
USG-161212
8-1/2" [216 MM]
INTERIOR
WOOD STUD (LOAD-BEARING)



ASSEMBLY REQUIREMENTS:

GYPSUM PANELS:
RESILIENT CHANNEL:
WOOD STUDS:
INSULATION:
GYPSUM PANELS:

TWO LAYERS 5/8" [15.9 MM] SHEETROCK® GYPSUM PANEL (UL TYPE SCX)
1/2" [12.7 MM] RESILIENT CHANNEL, 25 GA. (0.018"), 24" [610 MM] O.C.
2" X 6" [38 X 140 MM] WOOD STUDS, 16" [406 MM] O.C.
5-1/2" [140 MM] FIBERGLASS INSULATION
TWO LAYERS 5/8" [15.9 MM] SHEETROCK® GYPSUM PANEL (UL TYPE SCX)



GENERAL WALL NOTES:

- 1.REFER TO APPLICABLE CODES REQUIREMENTS TO ENSURE COMPLIANCE PRIOR TO CONSTRUCTION.
- 2.FOR THE MOST UP-TO-DATE DETAILS, INCLUDING CONSTRUCTION VARIATIONS, REFER TO THE PUBLISHED DESIGN.
- 3.WHERE DESIGN NO. INDICATES "PER", THE FIRE RATING IS BASED ON LABORATORY TEST DATA OF THE REFERENCED SIMILARLY CONSTRUCTED ASSEMBLIES.
- 4.STUD SIZES AND INSULATION THICKNESS ARE MINIMUM UNLESS OTHERWISE STATED IN THE PUBLISHED ASSEMBLY.
- 5.STUD AND FASTENER SPACINGS ARE MAXIMUM UNLESS OTHERWISE STATED IN THE PUBLISHED ASSEMBLY.
- 6.PANEL ORIENTATION SHALL BE AS SPECIFIED IN THE PUBLISHED DESIGN.
- 7.FIRE-RATINGS ARE FROM BOTH SIDES UNLESS OTHERWISE STATED.
- 8.FIRE-RATINGS ARE MAINTAINED WITH ONE OR MORE OF THE FOLLOWING MODIFICATIONS: INCREASE STUD DEPTH, INCREASE STUD MATERIAL THICKNESS, DECREASE STUD SPACING, DECREASE FASTENER SPACING, INCREASE INSULATION THICKNESS UP TO CAVITY DEPTH.
- 9.WHERE ACOUSTICAL PERFORMANCE IS PROVIDED IN AN ESTIMATED RANGE, THE VALUES ARE BASED ON LABORATORY TEST DATA OF SIMILARLY CONSTRUCTED ASSEMBLIES.
- 10.SOUND-RATINGS ARE MAINTAINED WITH ONE OR MORE OF THE FOLLOWING MODIFICATIONS: INCREASE STUD DEPTH, DECREASE STUD MATERIAL THICKNESS, INCREASE STUD SPACING, INCREASE FASTENER SPACING, INCREASE INSULATION THICKNESS UP TO CAVITY DEPTH. MODIFICATIONS MUST NOT EXCEED LIMITATIONS OF FIRE RATING.