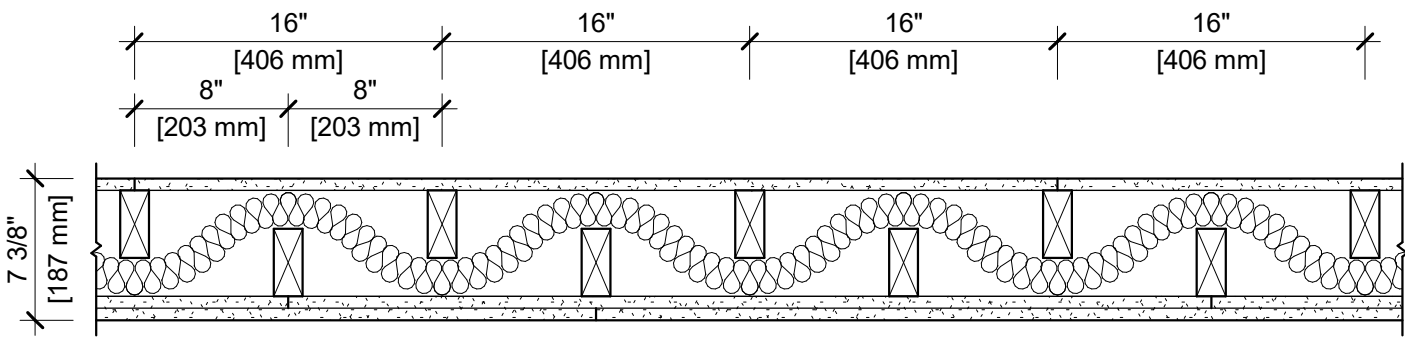


DESIGN NO. GA WP 3371

FIRE RATING:
STC RATING:
SOUND TEST:
SYSTEM THICKNESS:
LOCATION:
FRAMING TYPE:

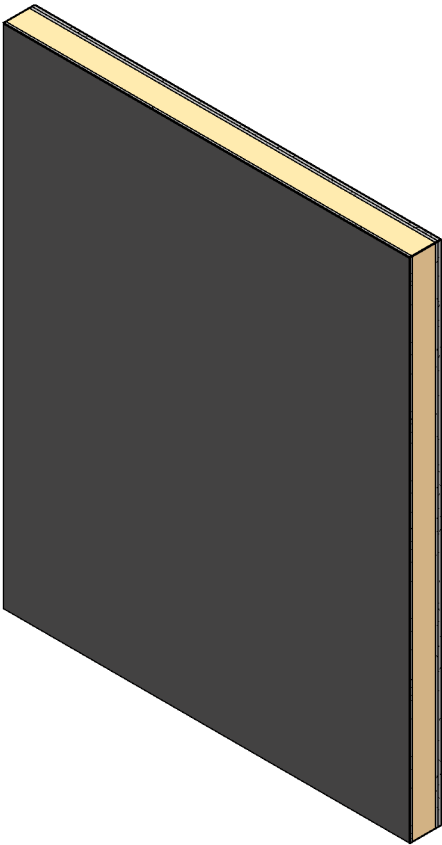
1 HOUR
50
USG-171221
7-3/8" [186 MM]
INTERIOR
WOOD STUD (LOAD-BEARING)



ASSEMBLY REQUIREMENTS:

GYPSUM PANELS:
WOOD STUDS:
INSULATION:
GYPSUM PANELS:

ONE LAYER 5/8" [15.9 MM] SHEETROCK® GYPSUM PANEL (UL TYPE SCX)
2" X 4" [38 X 89 MM] WOOD STUDS, STAGGERED, 8" [203 MM] O.C.
3-1/2" [89 MM] FIBERGLASS INSULATION
TWO LAYERS 5/8" [15.9 MM] SHEETROCK® GYPSUM PANEL (UL TYPE SCX)



GENERAL WALL NOTES:

- REFER TO APPLICABLE CODES REQUIREMENTS TO ENSURE COMPLIANCE PRIOR TO CONSTRUCTION.
- FOR THE MOST UP-TO-DATE DETAILS, INCLUDING CONSTRUCTION VARIATIONS, REFER TO THE PUBLISHED DESIGN.
- WHERE DESIGN NO. INDICATES "PER", THE FIRE RATING IS BASED ON LABORATORY TEST DATA OF THE REFERENCED SIMILARLY CONSTRUCTED ASSEMBLIES.
- STUD SIZES AND INSULATION THICKNESS ARE MINIMUM UNLESS OTHERWISE STATED IN THE PUBLISHED ASSEMBLY.
- STUD AND FASTENER SPACINGS ARE MAXIMUM UNLESS OTHERWISE STATED IN THE PUBLISHED ASSEMBLY.
- PANEL ORIENTATION SHALL BE AS SPECIFIED IN THE PUBLISHED DESIGN.
- FIRE-RATINGS ARE FROM BOTH SIDES UNLESS OTHERWISE STATED.
- FIRE-RATINGS ARE MAINTAINED WITH ONE OR MORE OF THE FOLLOWING MODIFICATIONS: INCREASE STUD DEPTH, INCREASE STUD MATERIAL THICKNESS, DECREASE STUD SPACING, DECREASE FASTENER SPACING, INCREASE INSULATION THICKNESS UP TO CAVITY DEPTH.
- WHERE ACOUSTICAL PERFORMANCE IS PROVIDED IN AN ESTIMATED RANGE, THE VALUES ARE BASED ON LABORATORY TEST DATA OF SIMILARLY CONSTRUCTED ASSEMBLIES.
- SOUND-RATINGS ARE MAINTAINED WITH ONE OR MORE OF THE FOLLOWING MODIFICATIONS: INCREASE STUD DEPTH, DECREASE STUD MATERIAL THICKNESS, INCREASE STUD SPACING, INCREASE FASTENER SPACING, INCREASE INSULATION THICKNESS UP TO CAVITY DEPTH. MODIFICATIONS MUST NOT EXCEED LIMITATIONS OF FIRE RATING.