

DESIGN NO.

UL U419

FIRE RATING:

2 HOURS

STC RATING:

54

SOUND TEST:

USG-160731

SYSTEM THICKNESS:

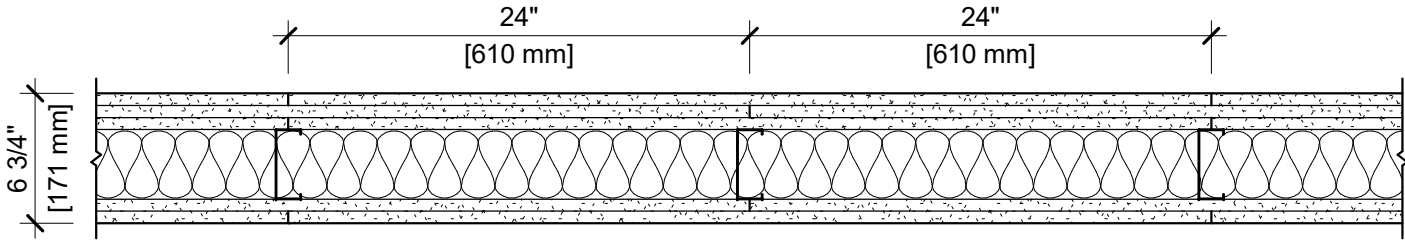
6-3/4" [171 MM]

LOCATION:

INTERIOR

FRAMING TYPE:

STEEL STUD (NONLOAD-BEARING)



ASSEMBLY REQUIREMENTS:

GYPSUM PANELS:

THREE LAYERS 5/8" [15.9 MM] SHEETROCK® ECOSMART GYPSUM PANEL (UL TYPE ULIX™)

STEEL STUDS:

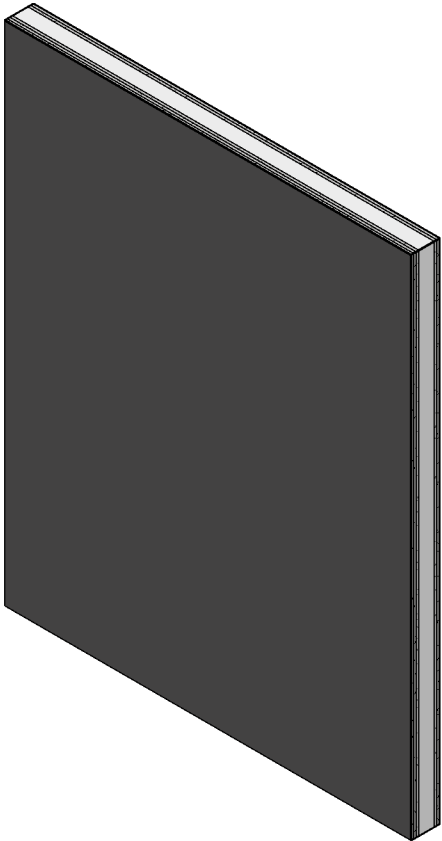
3-5/8" [92 MM] STEEL STUDS, EQ20 (0.018"), 24" [610 MM] O.C.

INSULATION:

3-1/2" [89 MM] FIBERGLASS INSULATION

GYPSUM PANELS:

TWO LAYERS 5/8" [15.9 MM] SHEETROCK® ECOSMART GYPSUM PANEL (UL TYPE ULIX™)



- GENERAL WALL NOTES:**
- REFER TO APPLICABLE CODES REQUIREMENTS TO ENSURE COMPLIANCE PRIOR TO CONSTRUCTION.
  - FOR THE MOST UP-TO-DATE DETAILS, INCLUDING CONSTRUCTION VARIATIONS, REFER TO THE PUBLISHED DESIGN.
  - WHERE DESIGN NO. INDICATES "PER", THE FIRE RATING IS BASED ON LABORATORY TEST DATA OF THE REFERENCED SIMILARLY CONSTRUCTED ASSEMBLIES.
  - STUD SIZES AND INSULATION THICKNESS ARE MINIMUM UNLESS OTHERWISE STATED IN THE PUBLISHED ASSEMBLY.
  - STUD AND FASTENER SPACINGS ARE MAXIMUM UNLESS OTHERWISE STATED IN THE PUBLISHED ASSEMBLY.
  - PANEL ORIENTATION SHALL BE AS SPECIFIED IN THE PUBLISHED DESIGN.
  - FIRE-RATINGS ARE FROM BOTH SIDES UNLESS OTHERWISE STATED.
  - FIRE-RATINGS ARE MAINTAINED WITH ONE OR MORE OF THE FOLLOWING MODIFICATIONS: INCREASE STUD DEPTH, INCREASE STUD MATERIAL THICKNESS, DECREASE STUD SPACING, DECREASE FASTENER SPACING, INCREASE INSULATION THICKNESS UP TO CAVITY DEPTH.
  - WHERE ACOUSTICAL PERFORMANCE IS PROVIDED IN AN ESTIMATED RANGE, THE VALUES ARE BASED ON LABORATORY TEST DATA OF SIMILARLY CONSTRUCTED ASSEMBLIES.
  - SOUND-RATINGS ARE MAINTAINED WITH ONE OR MORE OF THE FOLLOWING MODIFICATIONS: INCREASE STUD DEPTH, DECREASE STUD MATERIAL THICKNESS, INCREASE STUD SPACING, INCREASE FASTENER SPACING, INCREASE INSULATION THICKNESS UP TO CAVITY DEPTH. MODIFICATIONS MUST NOT EXCEED LIMITATIONS OF FIRE RATING.