

BORD FW (AFFLEURANT) - SUSPENSION DXT - EN COUPE DU TÉ SECONDAIRE  
PANNEAU PLEIN PLAFOND AVEC PROFILÉ MURAL  
FLUSH PANEL - FW EDGE - DXT GRID - CROSS TEE ELEVATION  
**FULL CEILING PANEL WITH WALL ANGLE**

Scale: 6" = 1'-0"

BORD FW (AFFLEURANT) - SUSPENSION DXT - EN COUPE DU TÉ SECONDAIRE  
PANNEAU ET SECTION DE SUSPENSION COUPÉS PAR LE TÉ PRINCIPAL  
FLUSH PANEL - FW EDGE - DXT GRID - CROSS TEE ELEVATION  
**PANEL AND GRID SECTION CUT THROUGH MAIN TEE**

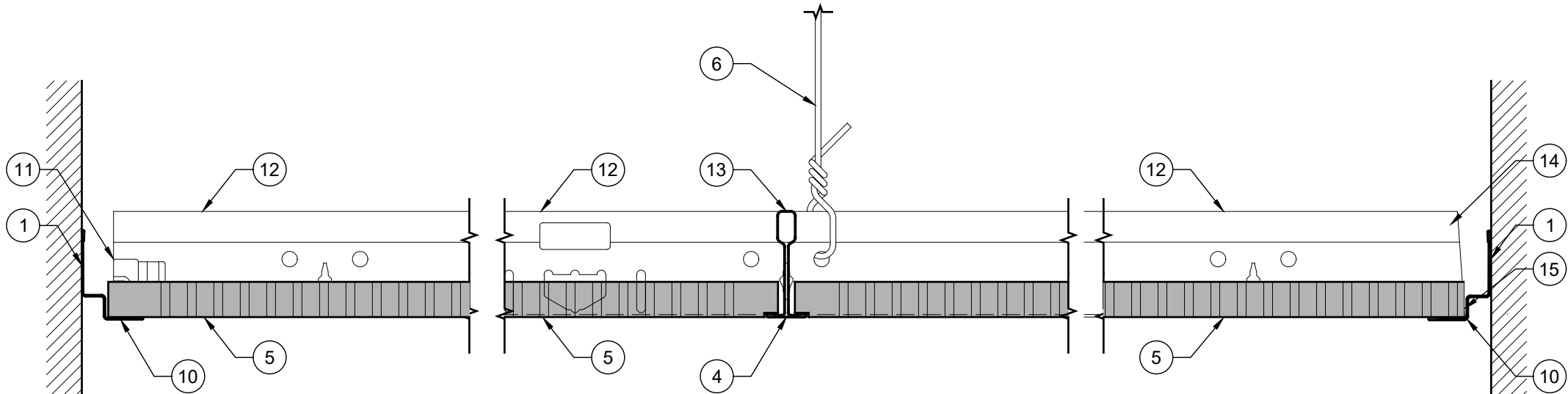
Scale: 6" = 1'-0"

BORD FW (AFFLEURANT) - SUSPENSION DXT - EN COUPE DU TÉ SECONDAIRE  
SUSPENSION ET PANNEAU COUPÉS AU CHANTIER AVEC PROFILÉ MURAL  
FLUSH PANEL - FW EDGE - DXT GRID - CROSS TEE ELEVATION  
**FIELD-CUT GRID AND PANEL AT WALL ANGLE**

Scale: 6" = 1'-0"

PREFERRED INSTALLATION: PROFILE EDGE OF PANEL TO BE SHOWN AT REVEAL MOLDING. FIELD-CUT AND ROUT EDGE TO MATCH IF NECESSARY.  
INSTALLATION RECOMMANDÉE : LA BORDURE USINÉ DU PANNEAU DOIT ÊTRE INSTALLÉ SUR LA MOULURE DE RETRAIT. LE BORD DU PANNEAU PEUT-ÊTRE COUPÉ AU CHANTIER

OPTIONAL INSTALLATION: SQUARE-CUT AND ENCAPSULATE EDGE AT PERIMETER.  
INSTALLATION OPTIONNELLE : COUPE CARRÉE ET BORD ENCAPSULÉ AU PÉRIMÈTRE



BORD FN (AFFLEURANT) - SUSPENSION DXT - EN COUPE DU TÉ PRINCIPALE  
PANNEAU PLEIN PLAFOND AVEC PROFILÉ DE RETRAIT  
FLUSH PANEL - FN EDGE - DXT GRID - MAIN TEE ELEVATION  
**FULL CEILING PANEL WITH SHADOWLINE ANGLE**

Scale: 6" = 1'-0"

BORD FN (AFFLEURANT) - SUSPENSION DXT - EN COUPE DU TÉ PRINCIPALE  
PANNEAU ET SECTION DE SUSPENSION COUPÉS PAR LE TÉ SECONDAIRE  
FLUSH PANEL - FN EDGE - DXT GRID - MAIN TEE ELEVATION  
**PANEL AND GRID SECTION CUT THROUGH CROSS TEE**

Scale: 6" = 1'-0"

BORD FN (AFFLEURANT) - SUSPENSION DXT - EN COUPE DU TÉ PRINCIPALE  
SUSPENSION COUPÉ AU CHANTIER AVEC PANNEAU DE COUPÉ CARRÉE  
FLUSH PANEL - FN EDGE - DXT GRID - MAIN TEE ELEVATION  
**FIELD-CUT GRID WITH SQUARE-CUT PANEL**

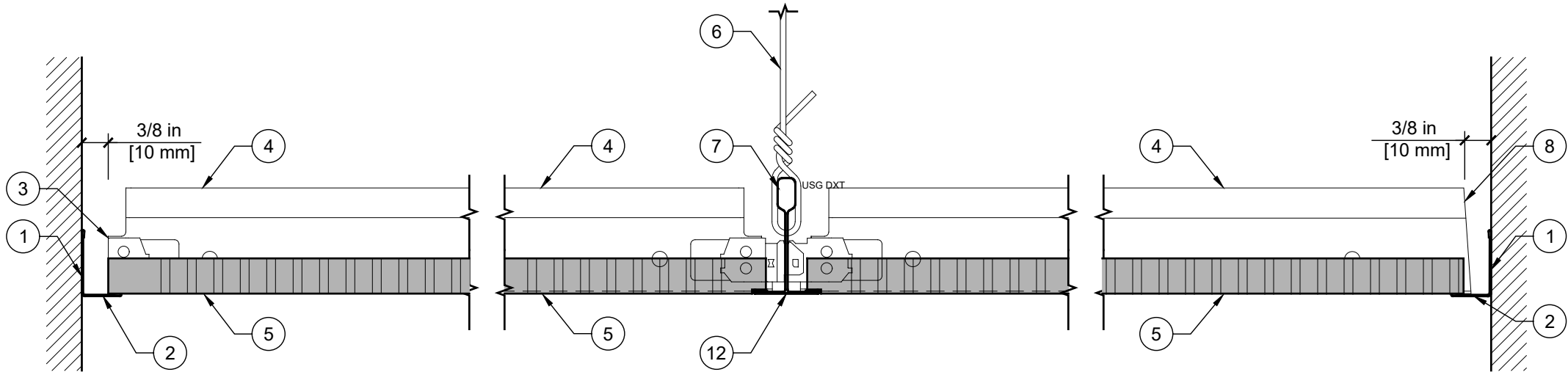
Scale: 6" = 1'-0"

KEYNOTES - BASIC CEILING DETAILS  
NOTAS - DETALLES BASICOS DE PLAFON  
NOTES - DÉTAILS DE PLAFOND DE BASE

- |    |   |
|----|---|
| 1  | ATTACH WALL ANGLE AT CEILING PERIMETER.<br>FIJAR ANGULO PERIMETRAL AL MURO.<br>ATTACHEZ ANGLE MURAL AUX PÉRIMÈTRES DU PLAFOND.  |
| 2  | WALL ANGLE.<br>ANGULO PERIMETRAL.<br>PROFILÉ MURALE.  |
| 3  | REMOVE CLIP FROM CROSS TEE AT WALL ANGLE.<br>ELIMINAR EL CLIP DE LA TEE SECUNDARIA AL ANGULO PERIMETRAL.<br>ENLEVEZ L'ATTACHE DE TÉ SECONDAIRE À LA JONCTION DU PROFILÉ MURALE. |
| 4  | CROSS TEE.<br>TEE SECUNDARIA.<br>TÉ SECONDAIRE.   |
| 5  | CEILING PANEL, USG DANOLINE LAY-IN CEILING PANEL.<br>PANEL DE PLAFON, USG DANOLINE LAY-IN CEILING PANEL.<br>PANNEAUX EN GYPSE PERFORÉS USG DANOLINE.                            |
| 6  | HANGER WIRE BY OTHERS.<br>ALAMBRE DE SUSPENSION (COLGANTE) POR OTROS.<br>FIL DE SUSPENTE PAR D'AUTRES.  |
| 7  | SECTION CUT THROUGH MAIN TEE.<br>CORTE DE TEE PRINCIPAL.<br>SECTION COUPÉE PAR TÉ PRINCIPAL.  |
| 8  | FIELD-CUT CROSS TEE AT WALL ANGLE.<br>CORTE DE TEE AL ANGULO PERIMETRAL.<br>COUPEZ LE TÉ SECONDAIRE À LA JONCTION DU PROFILÉ MURALE.  |
| 9  | PANEL EDGE<br>BORDE DEL PANEL<br>BORD DU PANNEAU  |
| 10 | SHADOW MOLDING.<br>ANGULO PERIMETRAL.<br>PROFILÉ MURALE.  |
| 11 | REMOVE CLIP FROM MAIN TEE AT WALL ANGLE.<br>ELIMINAR EL CLIP DE LA TEE PRINCIPAL AL ANGULO PERIMETRAL.<br>ENLEVEZ L'ATTACHE DE TÉ PRINCIPAL À LA JONCTION DU PROFILÉ MURALE.    |
| 12 | MAIN TEE.<br>TEE PRINCIPAL.<br>TÉ PRINCIPAL.  |
| 13 | SECTION CUT THROUGH CROSS TEE.<br>CORTE DE TEE SECUNDARIA.<br>SECTION COUPÉE PAR TÉ SECONDAIRE.   |
| 14 | FIELD-CUT MAIN TEE AT WALL ANGLE.<br>CORTE DE TEE PRINCIPAL AL ANGULO PERIMETRAL.<br>COUPEZ LE TÉ PRINCIPAL À LA JONCTION DU PROFILÉ MURALE.                                    |
| 15 | SQUARE-CUT PANEL AT PERIMETER (OPTIONAL INSTALLATION).<br>AJUSTE EN PLAFON PERIMETRAL (INSTALACION OPCIONAL).<br>PANNEAU À BORD CARRÉ AU PÉRIMÈTRE ( INSTALLATION FACULTATIVE). |

ADDITIONAL NOTES:

1. NOT FOR CONSTRUCTION.  
NO APTO PARA CONSTRUCCION.  
NE PAS UTILISER POUR CONSTRUCTION.



BORD FW (AFFLEURANT) - SUSPENSION DX - EN COUPE DU TÉ SECONDAIRE  
PANNEAU PLEIN PLAFOND AVEC PROFILÉ MURAL  
FLUSH PANEL - FW EDGE - DX GRID - CROSS TEE ELEVATION  
FULL CEILING PANEL WITH WALL ANGLE

Scale: 6" = 1'-0"

BORD FW (AFFLEURANT) - SUSPENSION DX - EN COUPE DU TÉ SECONDAIRE  
PANNEAU ET SECTION DE SUSPENSION COUPÉS PAR LE TÉ PRINCIPAL  
FLUSH PANEL - FW EDGE - DX GRID - CROSS TEE ELEVATION  
PANEL AND GRID SECTION CUT THROUGH MAIN TEE

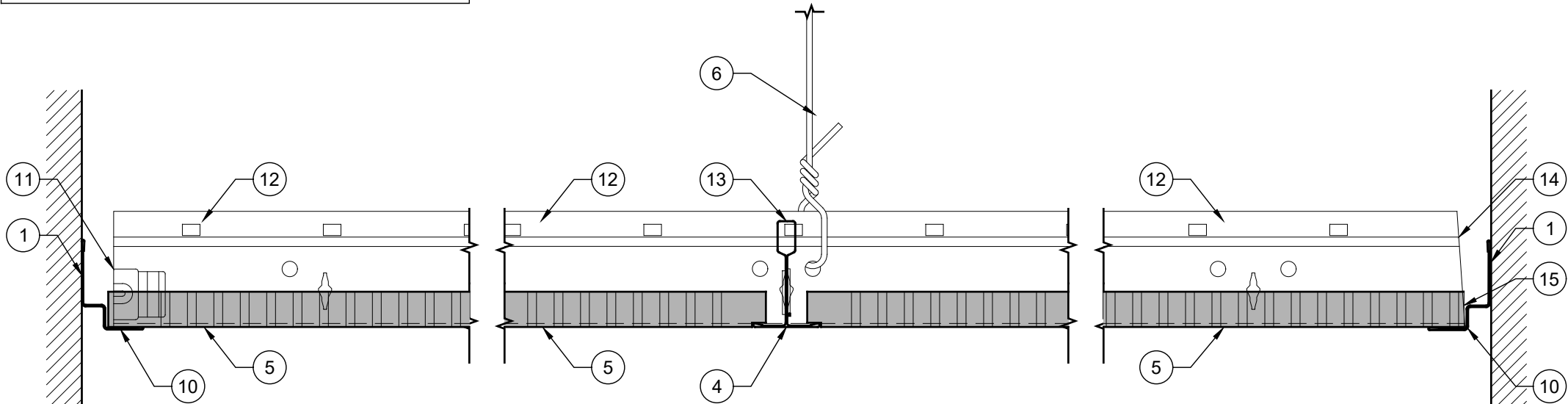
Scale: 6" = 1'-0"

BORD FW (AFFLEURANT) - SUSPENSION DX - EN COUPE DU TÉ SECONDAIRE  
SUSPENSION ET PANNEAU COUPÉS AU CHANTIER AVEC PROFILÉ MURAL  
FLUSH PANEL - FW EDGE - DX GRID - CROSS TEE ELEVATION  
FIELD-CUT GRID AND PANEL AT WALL ANGLE

Scale: 6" = 1'-0"

PREFERRED INSTALLATION: PROFILE EDGE OF PANEL TO BE SHOWN AT REVEAL MOLDING. FIELD-CUT AND ROUT EDGE TO MATCH IF NECESSARY.  
INSTALLATION RECOMMANDÉE : LA BORDURE USINÉ DU PANNEAU DOIT ÊTRE INSTALLÉ SUR LA MOULURE DE RETRAIT. LE BORD DU PANNEAU PEUT-ÊTRE COUPÉ AU CHANTIER

OPTIONAL INSTALLATION: SQUARE-CUT AND ENCAPSULATE EDGE AT PERIMETER.  
INSTALLATION OPTIONNELLE : COUPE CARRÉE ET BORD ENCAPSULÉ AU PÉRIMÈTRE



BORD FN (AFFLEURANT) - SUSPENSION DX - EN COUPE DU TÉ PRINCIPALE  
PANNEAU PLEIN PLAFOND AVEC PROFILÉ DE RETRAIT  
FLUSH PANEL - FN EDGE - DX GRID - MAIN TEE ELEVATION  
FULL CEILING PANEL WITH SHADOWLINE ANGLE

Scale: 6" = 1'-0"

BORD FN (AFFLEURANT) - SUSPENSION DX - EN COUPE DU TÉ PRINCIPALE  
PANNEAU ET SECTION DE SUSPENSION COUPÉS PAR LE TÉ SECONDAIRE  
FLUSH PANEL - FN EDGE - DX GRID - MAIN TEE ELEVATION  
PANEL AND GRID SECTION CUT THROUGH CROSS TEE

Scale: 6" = 1'-0"

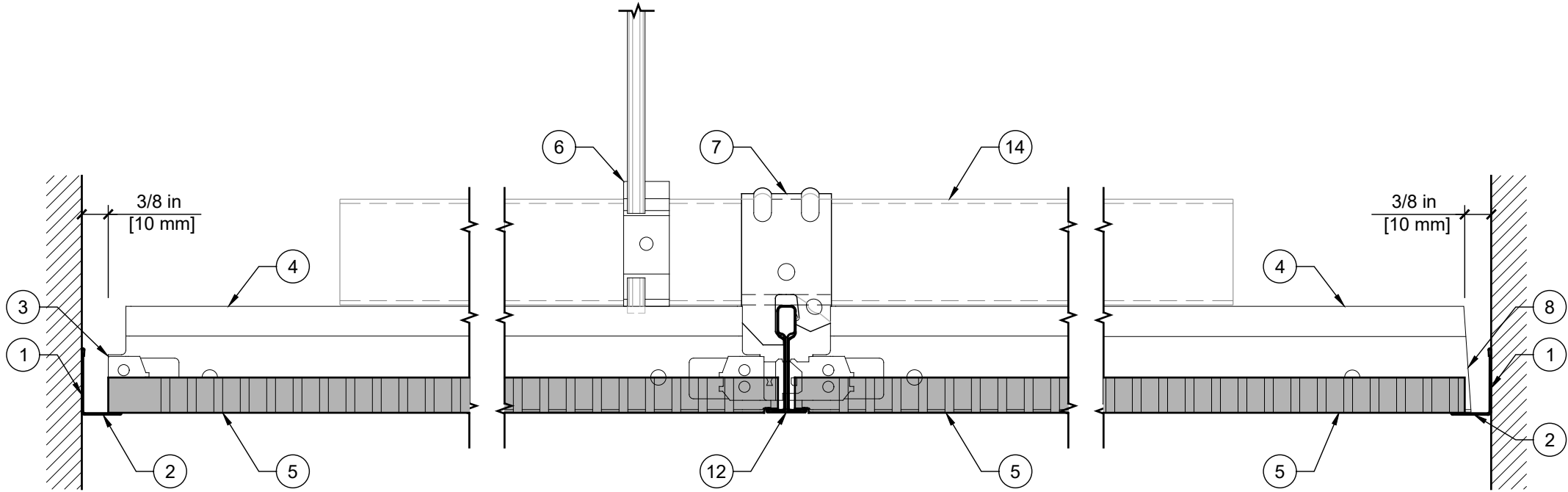
BORD FN (AFFLEURANT) - SUSPENSION DX - EN COUPE DU TÉ PRINCIPALE  
SUSPENSION COUPÉ AU CHANTIER AVEC PANNEAU DE COUPÉ CARRÉE  
FLUSH PANEL - FN EDGE - DX GRID - MAIN TEE ELEVATION  
FIELD-CUT GRID WITH SQUARE-CUT PANEL

Scale: 6" = 1'-0"

KEYNOTES - BASIC CEILING DETAILS  
NOTAS - DETALLES BASICOS DE PLAFON  
NOTES - DÉTAILS DE PLAFOND DE BASE

- |    |   |
|----|---|
| 1  | ATTACH WALL ANGLE AT CEILING PERIMETER.<br>FIJAR ANGULO PERIMETRAL AL MURO.<br>ATTACHEZ ANGLE MURAL AUX PÉRIMÈTRES DU PLAFOND.  |
| 2  | WALL ANGLE.<br>ANGULO PERIMETRAL.<br>PROFILÉ MURALE.  |
| 3  | REMOVE CLIP FROM CROSS TEE AT WALL ANGLE.<br>ELIMINAR EL CLIP DE LA TEE SECUNDARIA AL ANGULO PERIMETRAL.<br>ENLEVEZ L'ATTACHE DE TÉ SECONDAIRE À LA JONCTION DU PROFILÉ MURALE. |
| 4  | CROSS TEE.<br>TEE SECUNDARIA.<br>TÉ SECONDAIRE.   |
| 5  | CEILING PANEL, USG DANOLINE LAY-IN CEILING PANEL.<br>PANEL DE PLAFON, USG DANOLINE LAY-IN CEILING PANEL.<br>PANNEAUX EN GYPSE PERFORÉS USG DANOLINE.                            |
| 6  | HANGER WIRE BY OTHERS.<br>ALAMBRE DE SUSPENSION (COLGANTE) POR OTROS.<br>FIL DE SUSPENTE PAR D'AUTRES.  |
| 7  | SECTION CUT THROUGH MAIN TEE.<br>CORTE DE TEE PRINCIPAL.<br>SECTION COUPÉE PAR TÉ PRINCIPAL.  |
| 8  | FIELD-CUT CROSS TEE AT WALL ANGLE.<br>CORTE DE TEE AL ANGULO PERIMETRAL.<br>COUPEZ LE TÉ SECONDAIRE À LA JONCTION DU PROFILÉ MURALE.  |
| 9  | PANEL EDGE<br>BORDE DEL PANEL<br>BORD DU PANNEAU  |
| 10 | SHADOW MOLDING.<br>ANGULO PERIMETRAL.<br>PROFILÉ MURALE.  |
| 11 | REMOVE CLIP FROM MAIN TEE AT WALL ANGLE.<br>ELIMINAR EL CLIP DE LA TEE PRINCIPAL AL ANGULO PERIMETRAL.<br>ENLEVEZ L'ATTACHE DE TÉ PRINCIPAL À LA JONCTION DU PROFILÉ MURALE.    |
| 12 | MAIN TEE.<br>TEE PRINCIPAL.<br>TÉ PRINCIPAL.  |
| 13 | SECTION CUT THROUGH CROSS TEE.<br>CORTE DE TEE SECUNDARIA.<br>SECTION COUPÉE PAR TÉ SECONDAIRE.   |
| 14 | FIELD-CUT MAIN TEE AT WALL ANGLE.<br>CORTE DE TEE PRINCIPAL AL ANGULO PERIMETRAL.<br>COUPEZ LE TÉ PRINCIPAL À LA JONCTION DU PROFILÉ MURALE.                                    |
| 15 | SQUARE-CUT PANEL AT PERIMETER (OPTIONAL INSTALLATION).<br>AJUSTE EN PLAFON PERIMETRAL (INSTALACION OPCIONAL).<br>PANNEAU À BORD CARRÉ AU PÉRIMÈTRE ( INSTALLATION FACULTATIVE). |

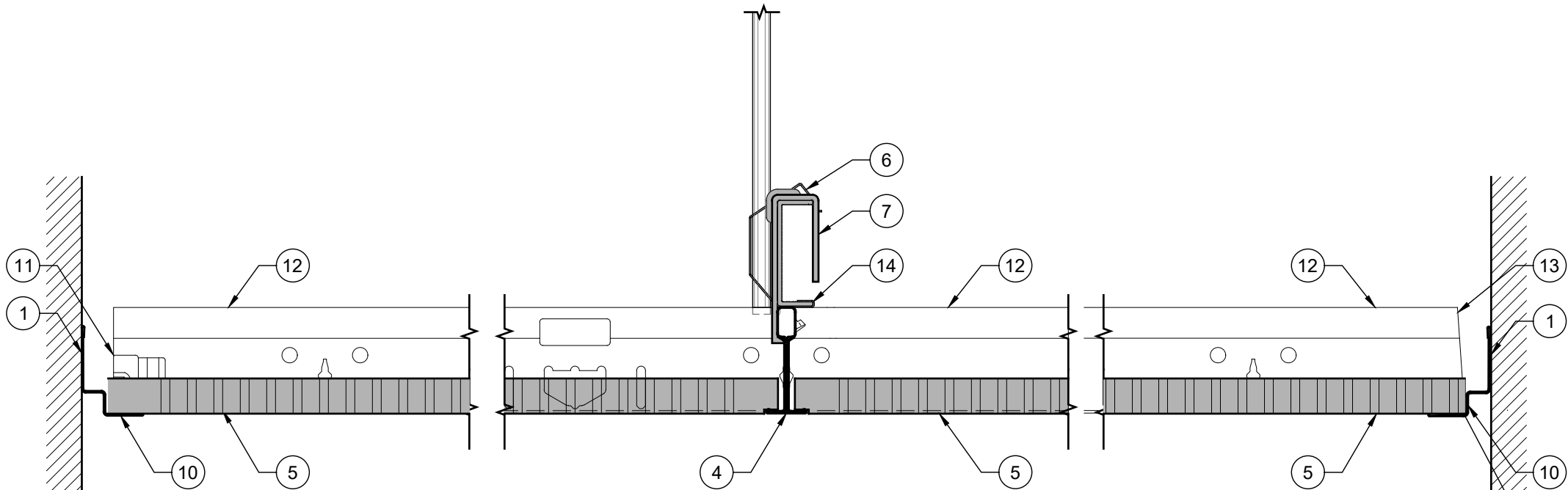
ADDITIONAL NOTES:  
  
1. NOT FOR CONSTRUCTION.  
NO APTO PARA CONSTRUCCION.  
NE PAS UTILISER POUR CONSTRUCTION.



1 FLUSH PANEL - FW EDGE - DXT GRID - CROSS TEE ELEVATION  
FULL CEILING PANEL WITH WALL ANGLE  
Scale: 6" = 1'-0"

2 FLUSH PANEL - FW EDGE - DXT GRID - CROSS TEE ELEVATION  
PANEL AND GRID SECTION CUT THROUGH MAIN TEE  
Scale: 6" = 1'-0"

3 FLUSH PANEL - FW EDGE - DXT GRID - CROSS TEE ELEVATION  
FIELD-CUT GRID AND PANEL AT WALL ANGLE  
Scale: 6" = 1'-0"



PREFERRED INSTALLATION: PROFILE EDGE OF PANEL TO BE SHOWN AT REVEAL MOLDING. FIELD-CUT AND ROUT EDGE TO MATCH IF NECESSARY.

4 FLUSH PANEL - FN EDGE - DXT GRID - MAIN TEE ELEVATION  
FULL CEILING PANEL WITH SHADOWLINE ANGLE  
Scale: 6" = 1'-0"

5 FLUSH PANEL - FN EDGE - DXT GRID - MAIN TEE ELEVATION  
PANEL AND GRID SECTION CUT THROUGH CROSS TEE  
Scale: 6" = 1'-0"

OPTIONAL INSTALLATION: SQUARE-CUT AND ENCAPSULATE EDGE AT PERIMETER.

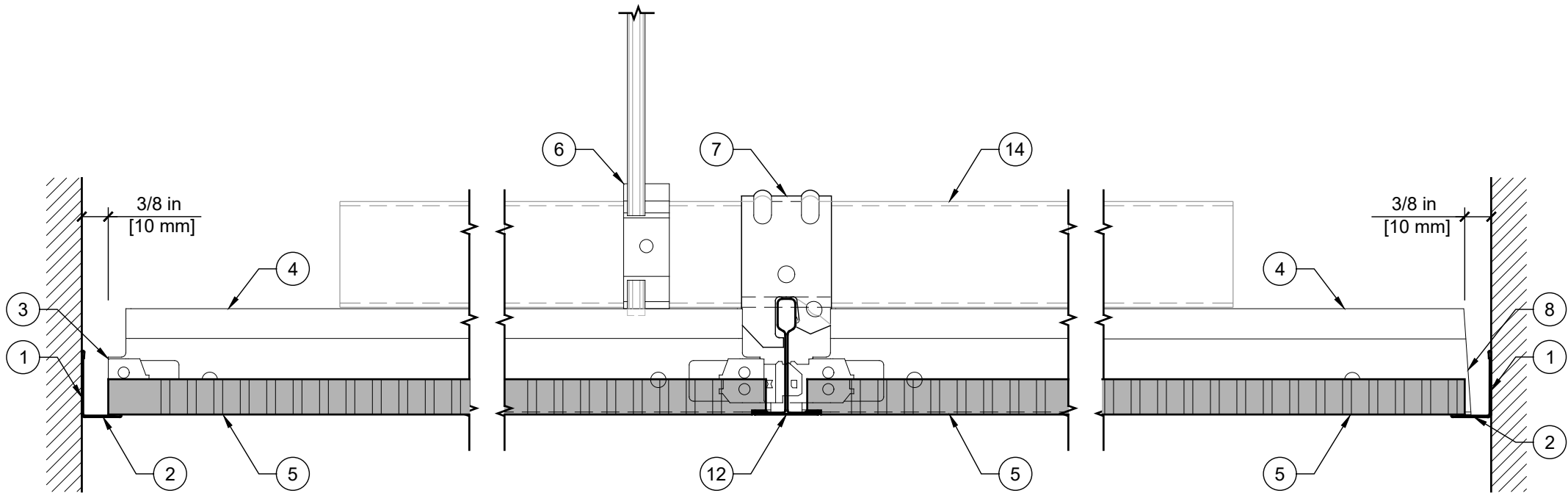
6 FLUSH PANEL - FN EDGE - DXT GRID - MAIN TEE ELEVATION  
FIELD-CUT GRID WITH SQUARE-CUT PANEL  
Scale: 6" = 1'-0"

## KEYNOTES - BASIC CEILING DETAILS NOTAS - DETALLES BASICOS DE PLAFON

1	ATTACH WALL ANGLE AT CEILING PERIMETER. FIJAR ANGULO PERIMETRAL AL MURO.
2	WALL ANGLE. ANGULO PERIMETRAL.
3	REMOVE CLIP FROM CROSS TEE AT WALL ANGLE. ELIMINAR EL CLIP DE LA TEE SECUNDARIA AL ANGULO PERIMETRAL.
4	CROSS TEE. TEE SECUNDARIA.
5	CEILING PANEL, USG DANOLINE FLUSH LAY-IN PANEL. PANEL DE PLAFON, USG DANOLINE FLUSH LAY-IN PANEL.
6	STEEL HANGER ROD AND CHANNEL CLIP BY OTHERS. VARILLA DE SUSPENSION Y CLIP DE CANAL POR OTROS.
7	ATTACH GRID TO CARRYING CHANNEL WITH USG V-14 FURRING CLIP OR EQUAL. FIJAR SUSPENSION A CARNELTA DE CARGA CON USG V-14 CLIP O IGUAL.
8	FIELD-CUT CROSS TEE AT WALL ANGLE. CORTE DE TEE AL ANGULO PERIMETRAL.
9	FIELD-CUT EDGE TO MATCH PANEL PROFILE. AJUSTE DE PLAFON PARA ENCAJAR EN EL ANGULO.
10	SHADOW MOLDING. ANGULO PERIMETRAL.
11	REMOVE CLIP FROM MAIN TEE AT WALL ANGLE. ELIMINAR EL CLIP DE LA TEE PRINCIPAL AL ANGULO PERIMETRAL.
12	MAIN TEE. TEE PRINCIPAL.
13	FIELD-CUT MAIN TEE AT WALL ANGLE. CORTE DE TEE PRINCIPAL AL ANGULO PERIMETRAL.
14	STEEL CARRYING CHANNEL BY OTHERS. CANAL DE CARGO POR OTROS.
15	SQUARE-CUT PANEL AT PERIMETER (OPTIONAL INSTALLATION). AJUSTE EN PLAFON PERIMETRAL (INSTALACION OPCIONAL).

### ADDITIONAL NOTES:

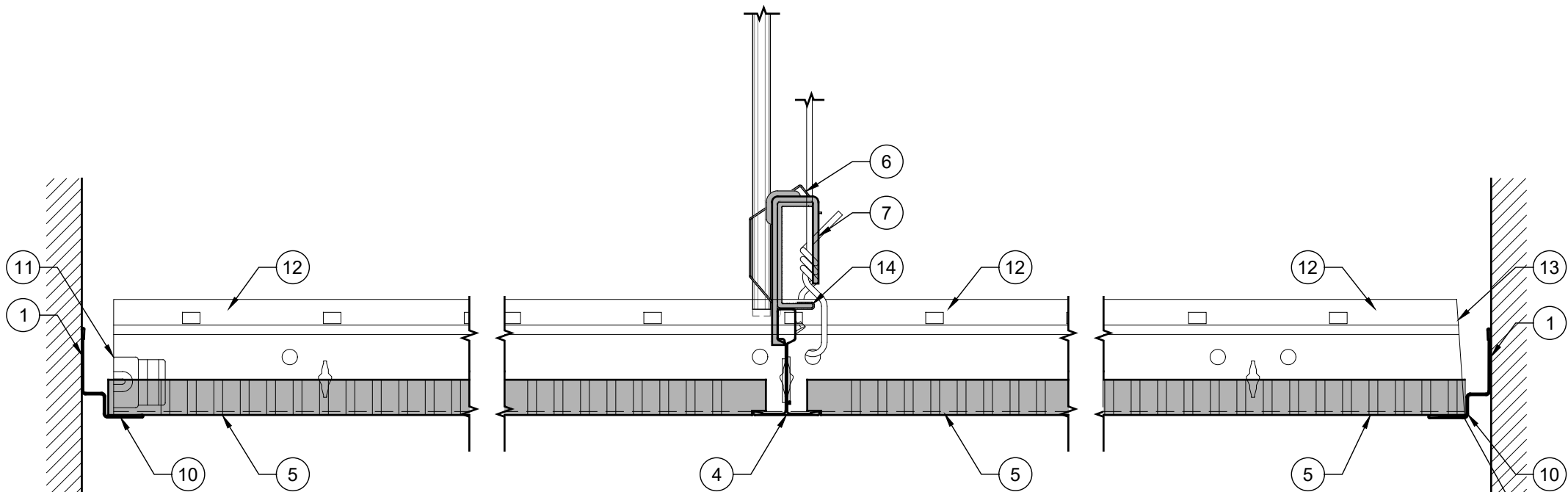
- MECHANICAL FASTENERS MAY BE REQUIRED.  
CHECK WITH LOCAL CODE FOR COMPLIANCE.



1 FLUSH PANEL - FW EDGE - DX GRID - CROSS TEE ELEVATION  
FULL CEILING PANEL WITH WALL ANGLE  
Scale: 6" = 1'-0"

2 FLUSH PANEL - FW EDGE - DX GRID - CROSS TEE ELEVATION  
PANEL AND GRID SECTION CUT THROUGH MAIN TEE  
Scale: 6" = 1'-0"

3 FLUSH PANEL - FW EDGE - DX GRID - CROSS TEE ELEVATION  
FIELD-CUT GRID AND PANEL AT WALL ANGLE  
Scale: 6" = 1'-0"



PREFERRED INSTALLATION: PROFILE EDGE OF PANEL TO BE SHOWN AT REVEAL MOLDING. FIELD-CUT AND ROUT EDGE TO MATCH IF NECESSARY.

4 FLUSH PANEL - FW EDGE - DX GRID - MAIN TEE ELEVATION  
FULL CEILING PANEL WITH SHADOWLINE ANGLE  
Scale: 6" = 1'-0"

5 FLUSH PANEL - FW EDGE - DX GRID - MAIN TEE ELEVATION  
PANEL AND GRID SECTION CUT THROUGH CROSS TEE  
Scale: 6" = 1'-0"

OPTIONAL INSTALLATION: SQUARE-CUT AND ENCAPSULATE EDGE AT PERIMETER.

6 FLUSH PANEL - FW EDGE - DX GRID - MAIN TEE ELEVATION  
FIELD-CUT GRID WITH SQUARE-CUT PANEL  
Scale: 6" = 1'-0"

## KEYNOTES - BASIC CEILING DETAILS NOTAS - DETALLES BASICOS DE PLAFON

1	ATTACH WALL ANGLE AT CEILING PERIMETER. FIJAR ANGULO PERIMETRAL AL MURO.
2	WALL ANGLE. ANGULO PERIMETRAL.
3	REMOVE CLIP FROM CROSS TEE AT WALL ANGLE. ELIMINAR EL CLIP DE LA TEE SECUNDARIA AL ANGULO PERIMETRAL.
4	CROSS TEE. TEE SECUNDARIA.
5	CEILING PANEL, USG DANOLINE FLUSH LAY-IN PANEL. PANEL DE PLAFON, USG DANOLINE FLUSH LAY-IN PANEL.
6	STEEL HANGER ROD AND CHANNEL CLIP BY OTHERS. VARILLA DE SUSPENSION Y CLIP DE CANAL POR OTROS.
7	ATTACH GRID TO CARRYING CHANNEL WITH USG V-14 FURRING CLIP OR EQUAL. FIJAR SUSPENSION A CARNELTA DE CARGA CON USG V-14 CLIP O IGUAL.
8	FIELD-CUT CROSS TEE AT WALL ANGLE. CORTE DE TEE AL ANGULO PERIMETRAL.
9	FIELD-CUT EDGE TO MATCH PANEL PROFILE. AJUSTE DE PLAFON PARA ENCAJAR EN EL ANGULO.
10	SHADOW MOLDING. ANGULO PERIMETRAL.
11	REMOVE CLIP FROM MAIN TEE AT WALL ANGLE. ELIMINAR EL CLIP DE LA TEE PRINCIPAL AL ANGULO PERIMETRAL.
12	MAIN TEE. TEE PRINCIPAL.
13	FIELD-CUT MAIN TEE AT WALL ANGLE. CORTE DE TEE PRINCIPAL AL ANGULO PERIMETRAL.
14	STEEL CARRYING CHANNEL BY OTHERS. CANAL DE CARGO POR OTROS.
15	SQUARE-CUT PANEL AT PERIMETER (OPTIONAL INSTALLATION). AJUSTE EN PLAFON PERIMETRAL (INSTALACION OPCIONAL).

### ADDITIONAL NOTES:

- MECHANICAL FASTENERS MAY BE REQUIRED.  
CHECK WITH LOCAL CODE FOR COMPLIANCE.