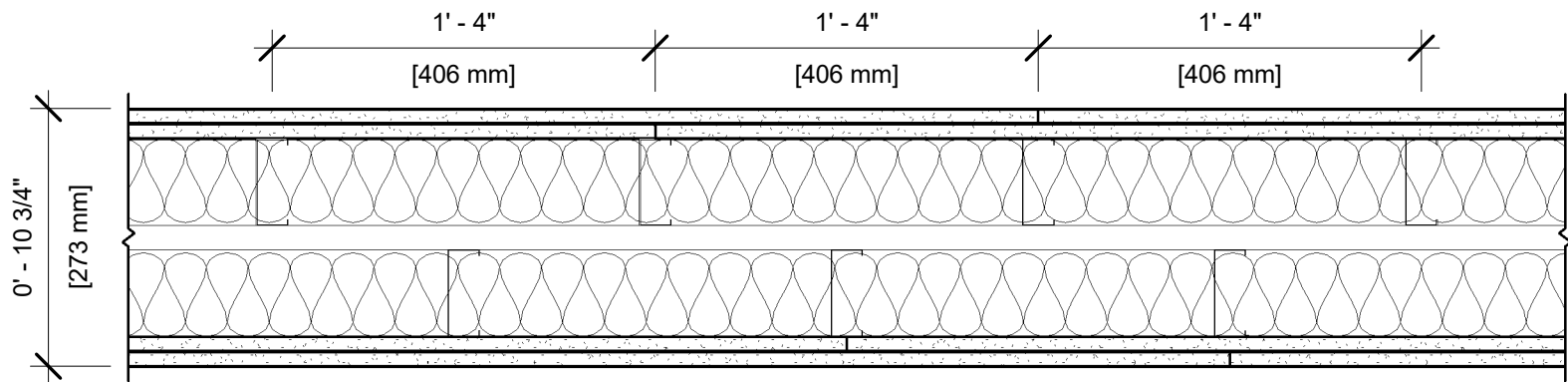


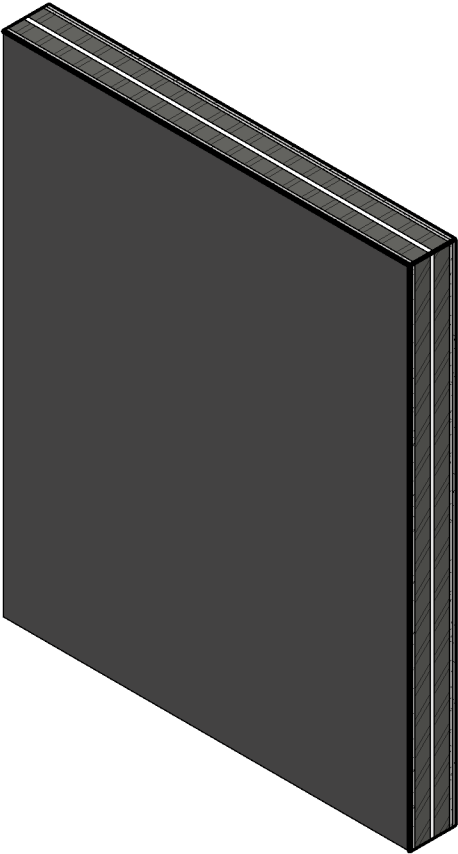
UL DESIGN NO. U493

FIRE RATING: 2 Hour
STC: 64
SOUND TEST: USG-160850
SYSTEM THICKNESS: 10 3/4"



ASSEMBLY OPTIONS:

- GYPSUM BOARD:** 2 LAYERS 5/8" THICK GYPSUM BOARD (UL TYPE ULIX™)
- STEEL STUDS:** 3-5/8" STEEL STUDS, EQ20 (0.020"), STAGGERED, SPACED 16" O.C.
- INSULATION:** 3-1/2" GLASS FIBER BATT INSULATION IN CAVITY
- AIR SPACE:** 1" AIR SPACE
- STEEL STUDS:** 3-5/8" STEEL STUDS, EQ20 (0.020"), STAGGERED, SPACED 16" O.C.
- INSULATION:** 3-1/2" GLASS FIBER BATT INSULATION IN CAVITY
- GYPSUM BOARD:** 2 LAYERS 5/8" THICK GYPSUM BOARD (UL TYPE ULIX™)



NOTES:

STUD AND INSULATION SIZES ARE MINIMUM UNLESS OTHERWISE STATED IN DESIGN.

FOR THE MOST UP-TO-DATE INFORMATION OR ASSEMBLY OPTIONS, REFER TO THE UL FIRE RESISTANCE DIRECTORY.

UL TYPE ULIX™ REQUIRES THE USE OF INSULATION FOR SINGLE-LAYER, STEEL-FRAMED UL FIRE-RATED ASSEMBLIES.

REFER TO THE UL FIRE RESISTANCE DIRECTORY FOR INFORMATION REGARDING PRODUCT ORIENTATION AND FASTENING REQUIREMENTS.