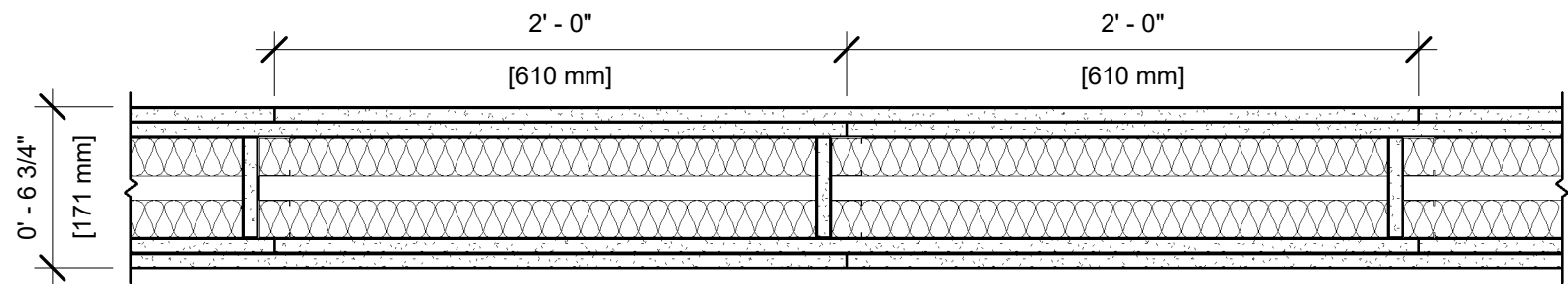


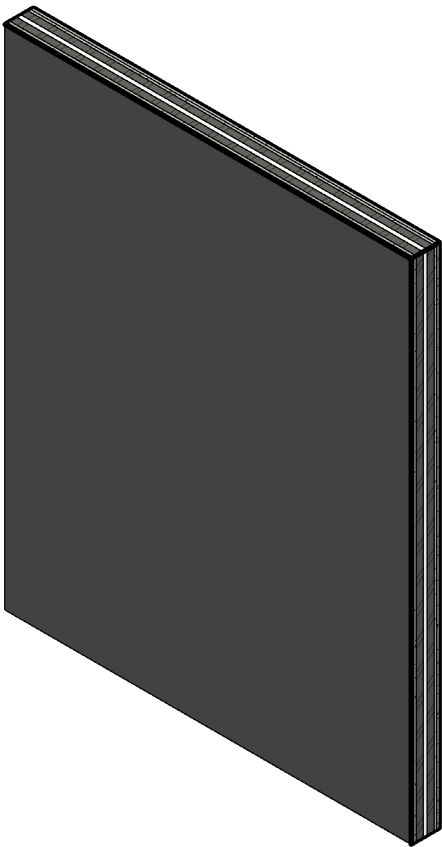
UL DESIGN NO. U420

FIRE RATING: 2 Hour  
STC: N/A  
SOUND TEST: N/A  
SYSTEM THICKNESS: 6 3/4"



ASSEMBLY OPTIONS:

- GYPSUM BOARD:** 2 LAYERS 5/8" THICK GYPSUM BOARD (UL TYPE ULIX™)
- STEEL STUDS:** 1-5/8" STEEL STUDS, 25 GA. MSG., SPACED 24" O.C.
- INSULATION:** MINERAL WOOL INSULATION, FRICTION-FITTED TO FILL STUD CAVITY
- BRACING:** PER UL DESIGN
- AIR SPACE:** 1" AIR SPACE
- STEEL STUDS:** 1-5/8" STEEL STUDS, 25 GA. MSG., SPACED 24" O.C.
- INSULATION:** MINERAL WOOL INSULATION, FRICTION-FITTED TO FILL STUD CAVITY
- GYPSUM BOARD:** 2 LAYERS 5/8" THICK GYPSUM BOARD (UL TYPE ULIX™)



NOTES:

STUD AND INSULATION SIZES ARE MINIMUM UNLESS OTHERWISE STATED IN DESIGN.

FOR THE MOST UP-TO-DATE INFORMATION OR ASSEMBLY OPTIONS, REFER TO THE UL FIRE RESISTANCE DIRECTORY.

UL TYPE ULIX™ REQUIRES THE USE OF INSULATION FOR SINGLE-LAYER, STEEL-FRAMED UL FIRE-RATED ASSEMBLIES.

REFER TO THE UL FIRE RESISTANCE DIRECTORY FOR INFORMATION REGARDING PRODUCT ORIENTATION AND FASTENING REQUIREMENTS.