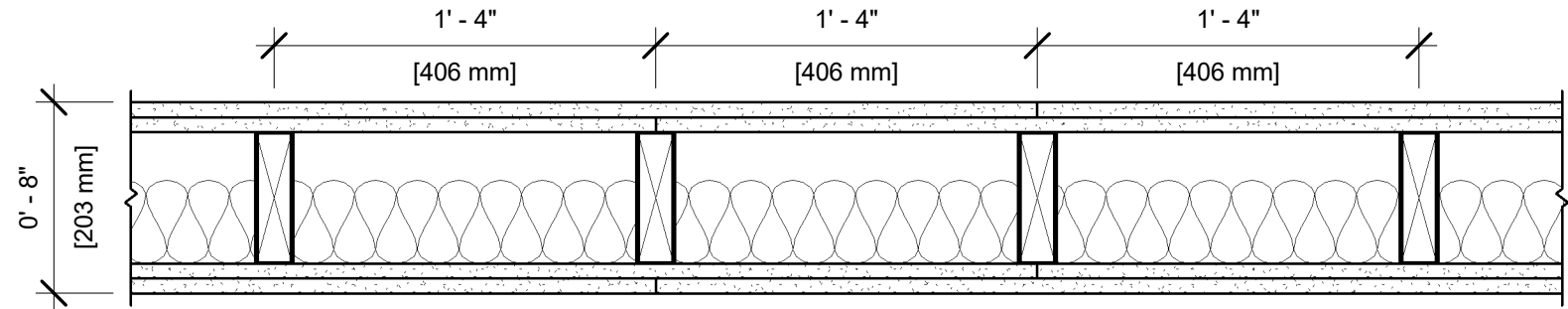


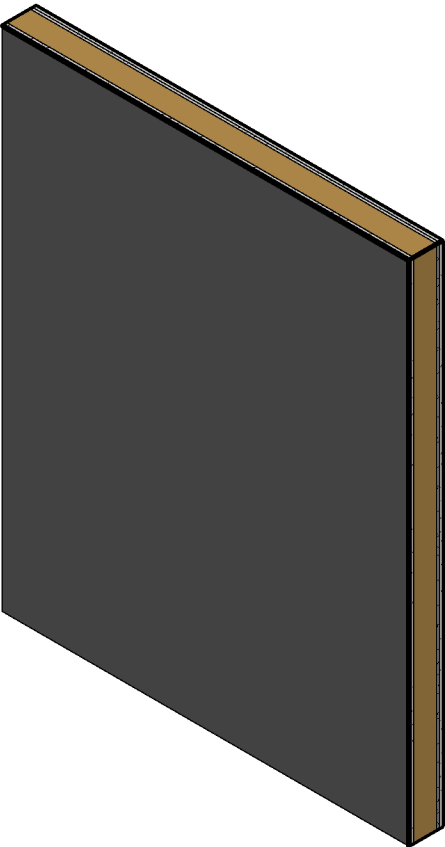
UL DESIGN NO. U301

FIRE RATING: 2 Hour
STC: 42
SOUND TEST: USG-161216
SYSTEM THICKNESS: 8"



ASSEMBLY OPTIONS:

- GYPSUM BOARD:** 2 LAYERS 5/8" THICK GYPSUM BOARD (UL TYPE SCX™)
- WOOD STUDS:** 2X6 WOOD STUDS, 16" O.C.
- INSULATION:** 3-1/2" GLASS FIBER BATT INSULATION IN CAVITY
- GYPSUM BOARD:** 2 LAYERS 5/8" THICK GYPSUM BOARD (UL TYPE SCX™)



NOTES:

STUD AND INSULATION SIZES ARE MINIMUM UNLESS OTHERWISE STATED IN DESIGN.

FOR THE MOST UP-TO-DATE INFORMATION OR ASSEMBLY OPTIONS, REFER TO THE UL FIRE RESISTANCE DIRECTORY.

REFER TO THE UL FIRE RESISTANCE DIRECTORY FOR INFORMATION REGARDING PRODUCT ORIENTATION AND FASTENING REQUIREMENTS.