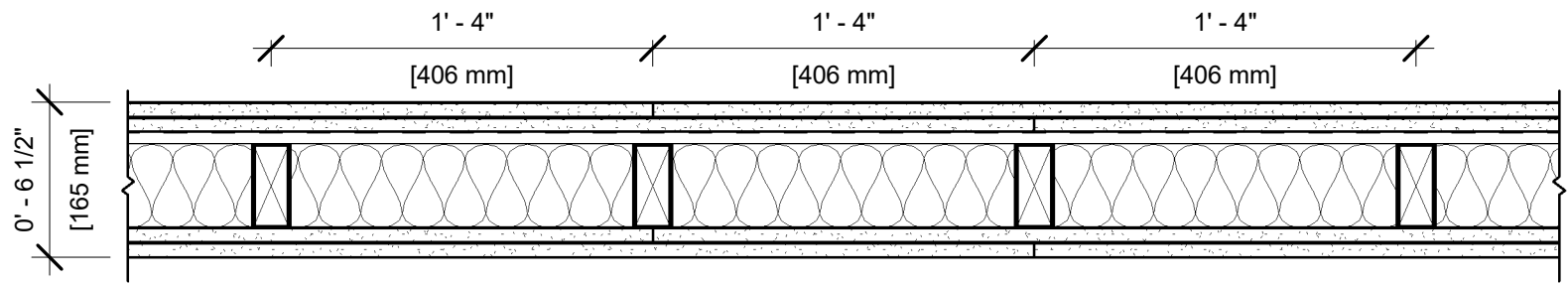


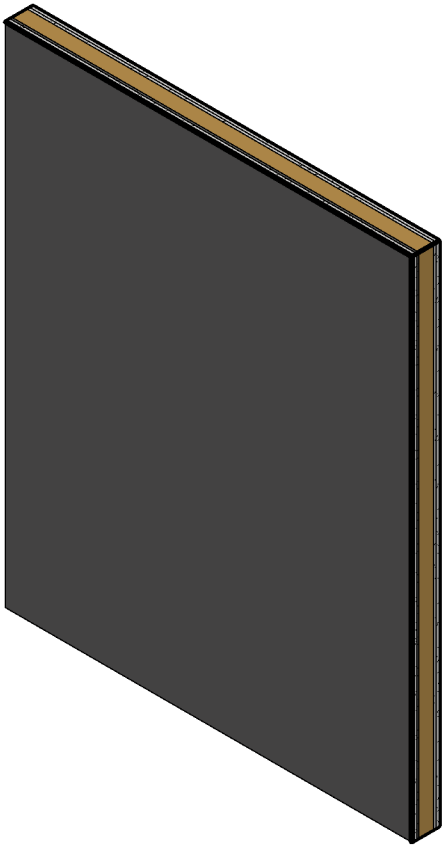
UL DESIGN NO. U301

FIRE RATING: 2 Hour  
STC: 54  
SOUND TEST: RAL-TL15-063  
SYSTEM THICKNESS: 6 1/2"



ASSEMBLY OPTIONS:

- GYPSUM BOARD: TWO LAYERS 5/8" THICK GYPSUM BOARD (UL TYPE ULIX™)
- RESILIENT CHANNEL: 1/2" 25 GA. RESILIENT CHANNEL SPACED 24" O.C. (SOUND TESTED WITH RC DELUXE®)
- WOOD STUDS: 2X4 WOOD STUDS, 16" O.C.
- INSULATION: 3-1/2" GLASS FIBER BATT INSULATION IN CAVITY
- GYPSUM BOARD: TWO LAYERS 5/8" THICK GYPSUM BOARD (UL TYPE ULIX™)



NOTES:

STUD AND INSULATION SIZES ARE MINIMUM UNLESS OTHERWISE STATED IN DESIGN.

FOR THE MOST UP-TO-DATE INFORMATION OR ASSEMBLY OPTIONS, REFER TO THE UL FIRE RESISTANCE DIRECTORY.

UL TYPE ULIX™ REQUIRES THE USE OF INSULATION FOR SINGLE-LAYER, STEEL-FRAMED UL FIRE-RATED ASSEMBLIES.

REFER TO THE UL FIRE RESISTANCE DIRECTORY FOR INFORMATION REGARDING PRODUCT ORIENTATION AND FASTENING REQUIREMENTS.