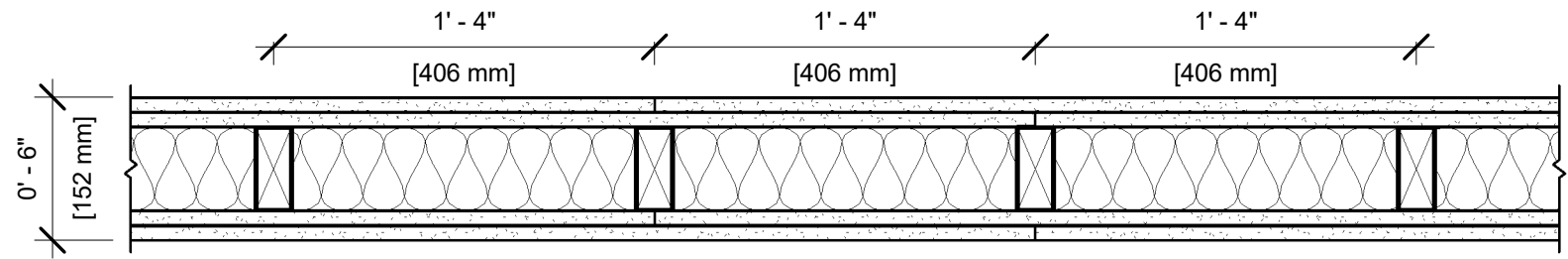


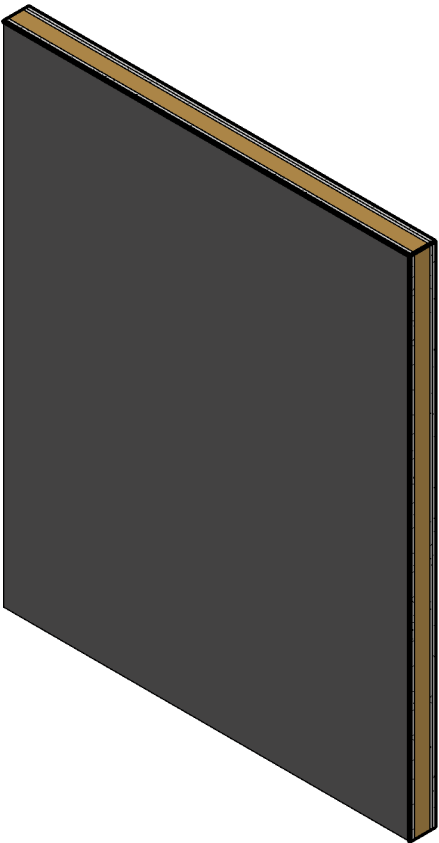
UL DESIGN NO. U301

FIRE RATING: 2 Hour  
STC: N/A  
SOUND TEST: N/A  
SYSTEM THICKNESS: 6"



ASSEMBLY OPTIONS:

- GYPSUM BOARD:** TWO LAYERS 5/8" THICK GYPSUM BOARD (UL TYPE SCX™)
- WOOD STUDS:** 2X4 WOOD STUDS, 16" O.C.
- INSULATION:** 3-1/2" GLASS FIBER BATT INSULATION IN CAVITY
- GYPSUM BOARD:** TWO LAYERS 5/8" THICK GYPSUM BOARD (UL TYPE SCX™)



NOTES:

STUD AND INSULATION SIZES ARE MINIMUM UNLESS OTHERWISE STATED IN DESIGN.

FOR THE MOST UP-TO-DATE INFORMATION OR ASSEMBLY OPTIONS, REFER TO THE UL FIRE RESISTANCE DIRECTORY.

REFER TO THE UL FIRE RESISTANCE DIRECTORY FOR INFORMATION REGARDING PRODUCT ORIENTATION AND FASTENING REQUIREMENTS.