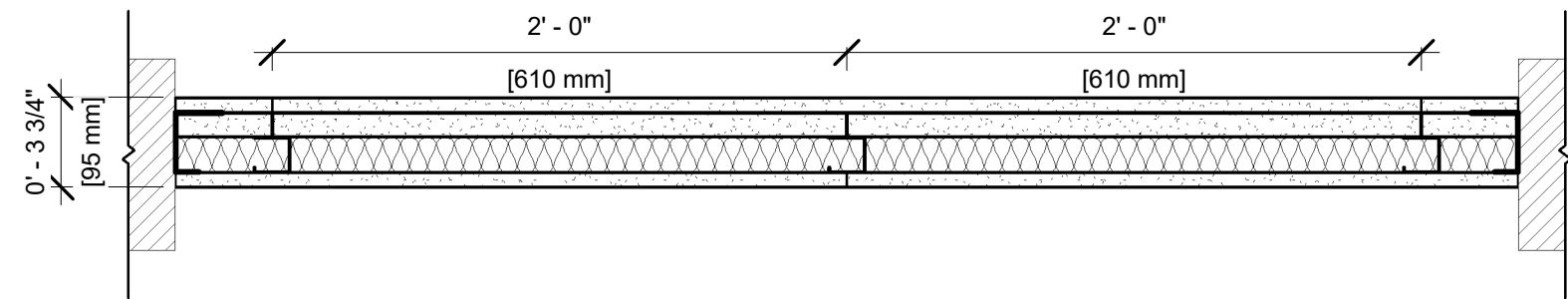


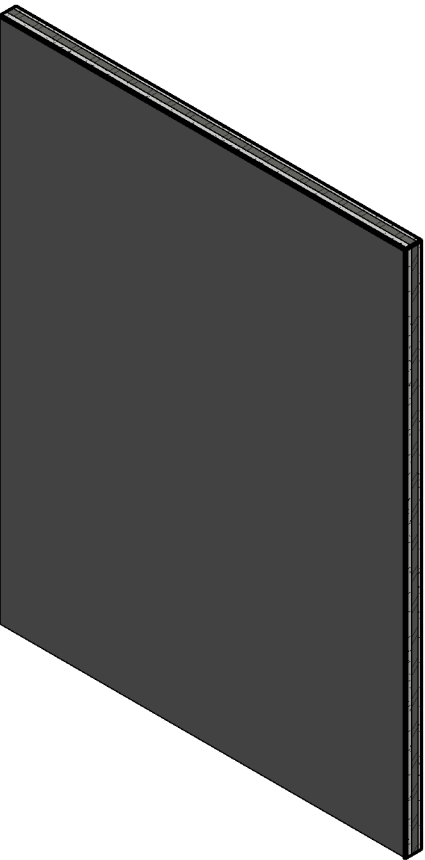
UL DESIGN NO. U415 E

FIRE RATING: 2 HOUR
STC: N/A
SOUND TEST: N/A
SYSTEM THICKNESS: 3 3/4"



ASSEMBLY OPTIONS:

- GYPSUM BOARD: ONE LAYER 5/8" THICK GYPSUM BOARD (UL TYPE ULIX™)
- GYPSUM BOARD: ONE LAYER 1" THICK GYPSUM LINER PANEL (UL TYPE SLX™)
- STEEL STUDS: 2-1/2" CH STUDS, 20 GA. MSG., SPACED 24" O.C.
- INSULATION: OPTIONAL
- GYPSUM BOARD: ONE LAYER 5/8" THICK GYPSUM BOARD (UL TYPE ULIX™)



NOTES:

STUD AND INSULATION SIZES ARE MINIMUM UNLESS OTHERWISE STATED IN DESIGN.

FOR THE MOST UP-TO-DATE INFORMATION OR ASSEMBLY OPTIONS, REFER TO THE UL FIRE RESISTANCE DIRECTORY.

UL TYPE ULIX™ REQUIRES THE USE OF INSULATION FOR SINGLE-LAYER, STEEL-FRAMED UL FIRE-RATED ASSEMBLIES.

REFER TO THE UL FIRE RESISTANCE DIRECTORY FOR INFORMATION REGARDING PRODUCT ORIENTATION AND FASTENING REQUIREMENTS.