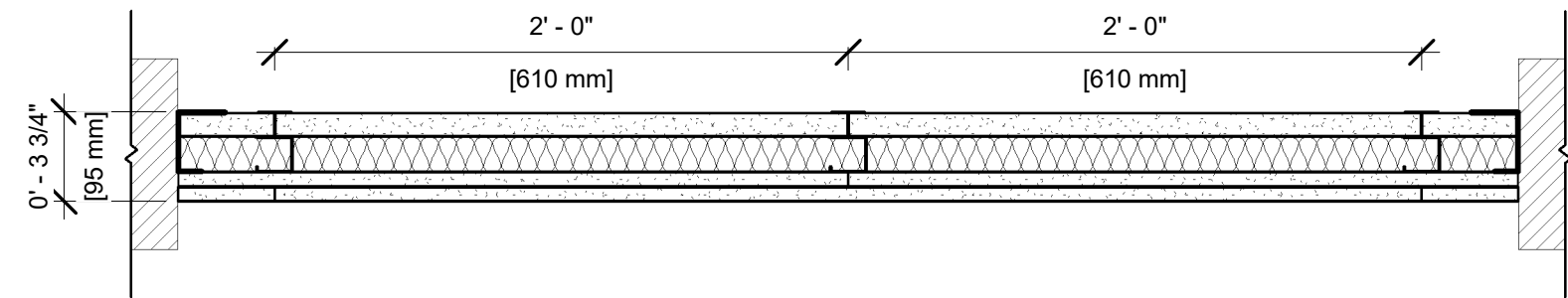


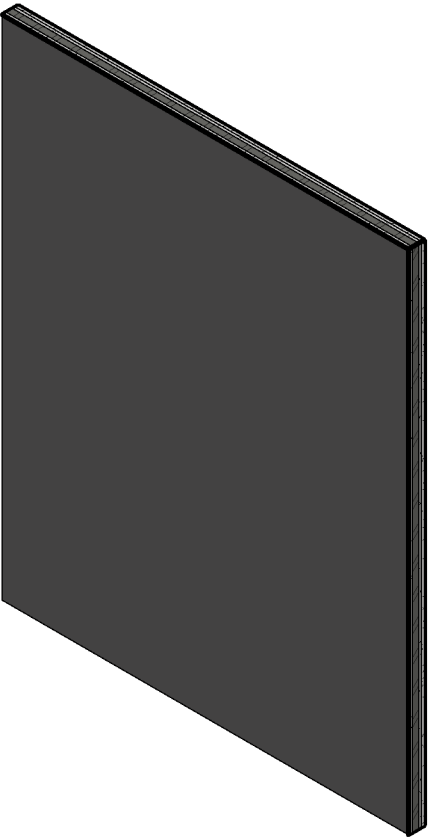
UL DESIGN NO. U415 B

FIRE RATING: 2 Hour  
STC: 48  
SOUND TEST: USG-170427  
SYSTEM THICKNESS: 3 3/4"



ASSEMBLY OPTIONS:

- GYPSON BOARD:** ONE LAYER 1" THICK GYPSON LINER PANEL (UL TYPE SLX™)
- STEEL STUDS:** 2-1/2" CH STUDS, 20 GA. MSG., SPACED 24" O.C.
- INSULATION:** 1-1/2" GLASS FIBER BATT INSULATION IN CAVITY
- GYPSON BOARD:** TWO LAYERS 5/8" THICK GYPSON BOARD (UL TYPE SCX™)



NOTES:

STUD AND INSULATION SIZES ARE MINIMUM UNLESS OTHERWISE STATED IN DESIGN.

FOR THE MOST UP-TO-DATE INFORMATION OR ASSEMBLY OPTIONS, REFER TO THE UL FIRE RESISTANCE DIRECTORY.

REFER TO THE UL FIRE RESISTANCE DIRECTORY FOR INFORMATION REGARDING PRODUCT ORIENTATION AND FASTENING REQUIREMENTS.