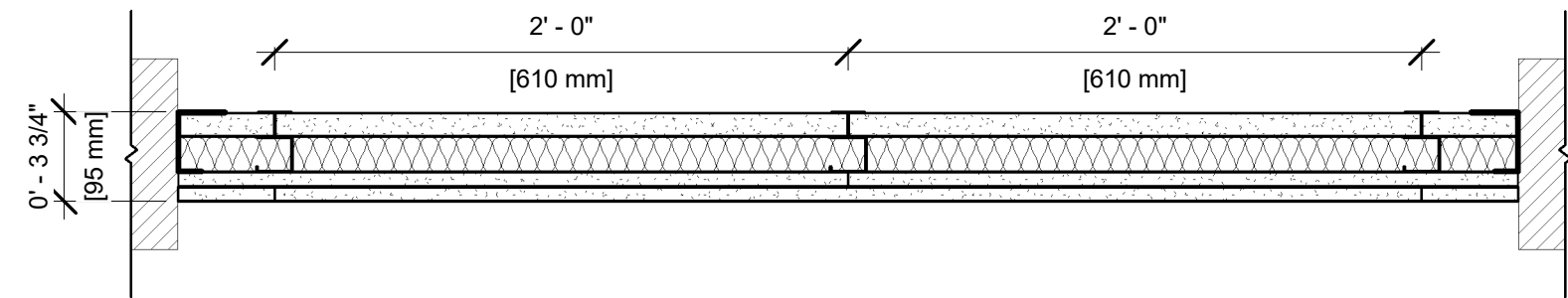


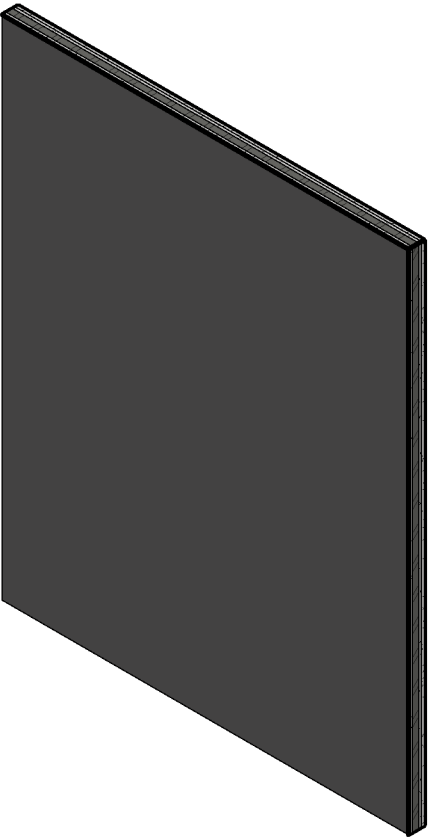
UL DESIGN NO. U415 B

FIRE RATING: 2 Hour
STC: 47
SOUND TEST: USG-170522
SYSTEM THICKNESS: 3 3/4"



ASSEMBLY OPTIONS:

- GYPSON BOARD:** ONE LAYER 1" THICK GYPSUM LINER PANEL (UL TYPE SLX™)
- STEEL STUDS:** 2-1/2" CH STUDS, 20 GA. MSG., SPACED 24" O.C.
- INSULATION:** 1-1/2" GLASS FIBER BATT INSULATION IN CAVITY
- GYPSON BOARD:** TWO LAYERS 5/8" THICK GYPSUM BOARD (UL TYPE ULIX™)



NOTES:

STUD AND INSULATION SIZES ARE MINIMUM UNLESS OTHERWISE STATED IN DESIGN.

FOR THE MOST UP-TO-DATE INFORMATION OR ASSEMBLY OPTIONS, REFER TO THE UL FIRE RESISTANCE DIRECTORY.

UL TYPE ULIX™ REQUIRES THE USE OF INSULATION FOR SINGLE-LAYER, STEEL-FRAMED UL FIRE-RATED ASSEMBLIES.

REFER TO THE UL FIRE RESISTANCE DIRECTORY FOR INFORMATION REGARDING PRODUCT ORIENTATION AND FASTENING REQUIREMENTS.