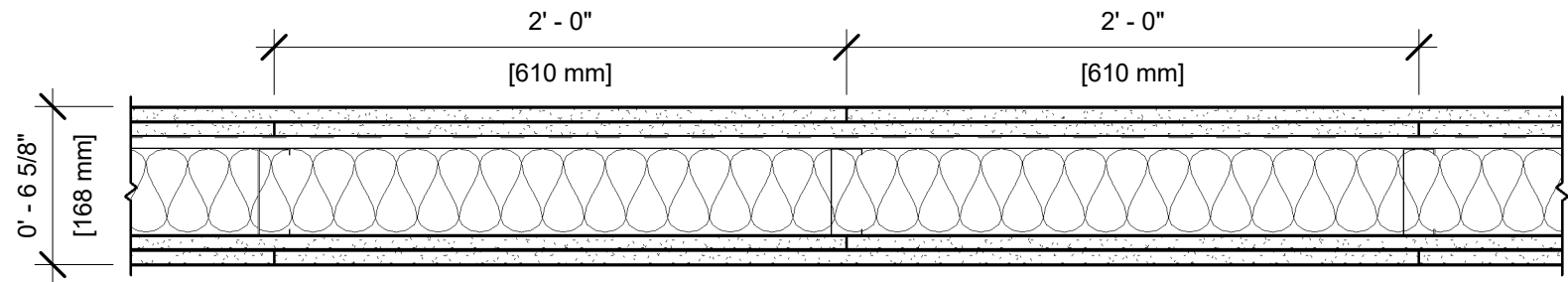


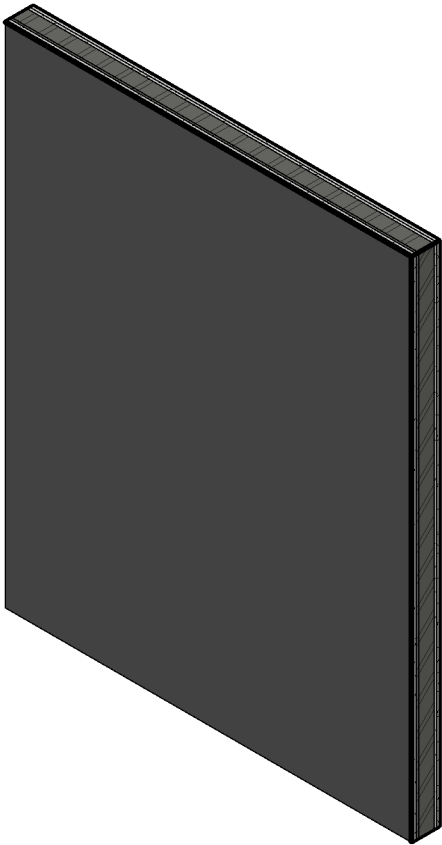
UL DESIGN NO. U419

FIRE RATING: 2 Hour
STC: 57
SOUND TEST: USG-161006
SYSTEM THICKNESS: 6 5/8"



ASSEMBLY OPTIONS:

- GYPSUM BOARD:** TWO LAYERS 5/8" THICK GYPSUM BOARD (UL TYPE ULIX™)
- RESILIENT CHANNEL:** 1/2" 25 GA. RESILIENT CHANNEL SPACED 24" O.C. (SOUND TESTED WITH RC DELUXE®)
- STEEL STUDS:** 3-5/8" STEEL STUDS, EQ25 (0.017"), SPACED 24" O.C.
- INSULATION:** 3 1/2" GLASS FIBER BATT INSULATION IN CAVITY
- GYPSUM BOARD:** TWO LAYERS 5/8" THICK GYPSUM BOARD (UL TYPE ULIX™)



NOTES:

STUD AND INSULATION SIZES ARE MINIMUM UNLESS OTHERWISE STATED IN DESIGN.

FOR THE MOST UP-TO-DATE INFORMATION OR ASSEMBLY OPTIONS, REFER TO THE UL FIRE RESISTANCE DIRECTORY.

UL TYPE ULIX™ REQUIRES THE USE OF INSULATION FOR SINGLE-LAYER, STEEL-FRAMED UL FIRE-RATED ASSEMBLIES.

REFER TO THE UL FIRE RESISTANCE DIRECTORY FOR INFORMATION REGARDING PRODUCT ORIENTATION AND FASTENING REQUIREMENTS.