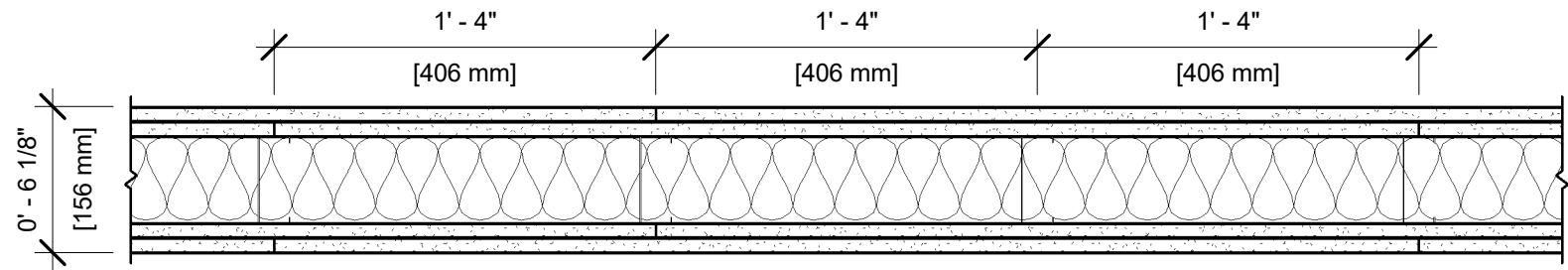


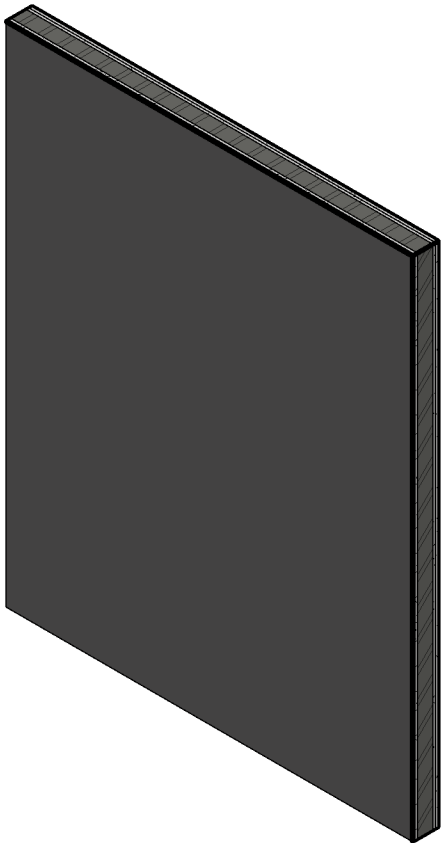
UL DESIGN NO. U419

FIRE RATING: 2 Hour  
STC: 53  
SOUND TEST: USG-170104  
SYSTEM THICKNESS: 6 1/8"



ASSEMBLY OPTIONS:

- GYPSUM BOARD:** TWO LAYERS 5/8" THICK GYPSUM BOARD (UL TYPE SCX™)
- STEEL STUDS:** 3-5/8" STEEL STUDS, EQ20 (0.019"), SPACED 16" O.C.
- INSULATION:** 3 1/2" GLASS FIBER BATT INSULATION IN CAVITY
- GYPSUM BOARD:** TWO LAYERS 5/8" THICK GYPSUM BOARD (UL TYPE SCX™)



NOTES:

STUD AND INSULATION SIZES ARE MINIMUM UNLESS OTHERWISE STATED IN DESIGN.

FOR THE MOST UP-TO-DATE INFORMATION OR ASSEMBLY OPTIONS, REFER TO THE UL FIRE RESISTANCE DIRECTORY.

REFER TO THE UL FIRE RESISTANCE DIRECTORY FOR INFORMATION REGARDING PRODUCT ORIENTATION AND FASTENING REQUIREMENTS.