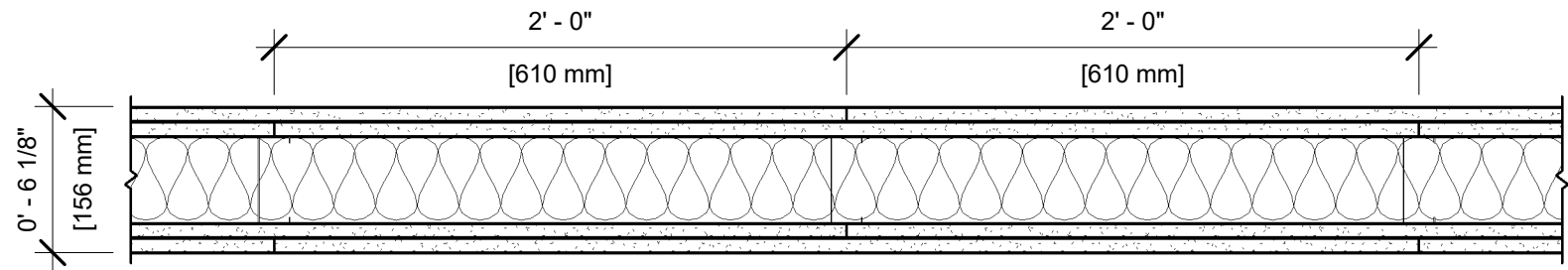


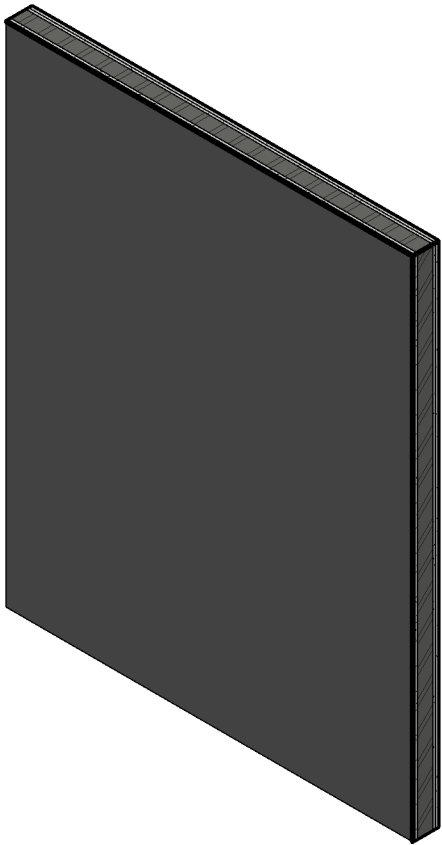
UL DESIGN NO. U419

FIRE RATING: 2 Hour
STC: 53
SOUND TEST: USG-180604
SYSTEM THICKNESS: 6 1/8"



ASSEMBLY OPTIONS:

- GYPSON BOARD:** TWO LAYERS 5/8" THICK GYPSUM BOARD (UL TYPE SCX™)
- STEEL STUDS:** 3-5/8" STEEL STUDS, EQ20 (0.020"), SPACED 24" O.C.
- INSULATION:** 3 1/2" GLASS FIBER BATT INSULATION IN CAVITY
- GYPSON BOARD:** TWO LAYERS 5/8" THICK GYPSUM BOARD (UL TYPE SCX™)



NOTES:

STUD AND INSULATION SIZES ARE MINIMUM UNLESS OTHERWISE STATED IN DESIGN.

FOR THE MOST UP-TO-DATE INFORMATION OR ASSEMBLY OPTIONS, REFER TO THE UL FIRE RESISTANCE DIRECTORY.

REFER TO THE UL FIRE RESISTANCE DIRECTORY FOR INFORMATION REGARDING PRODUCT ORIENTATION AND FASTENING REQUIREMENTS.