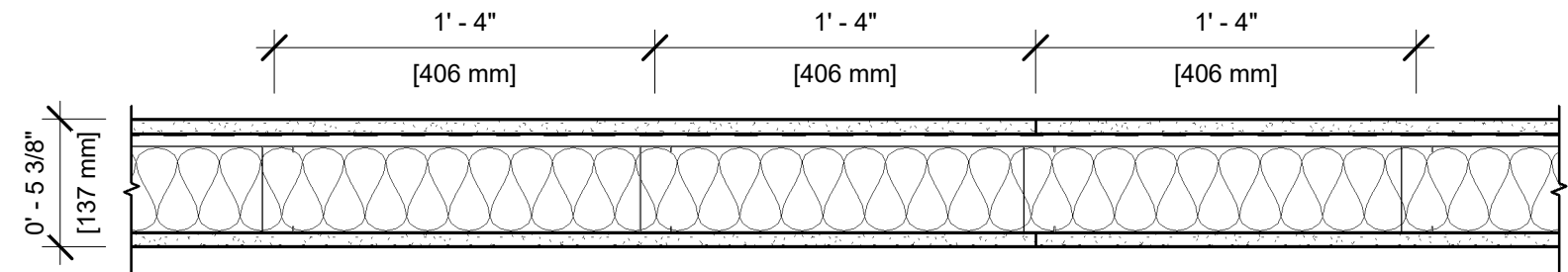


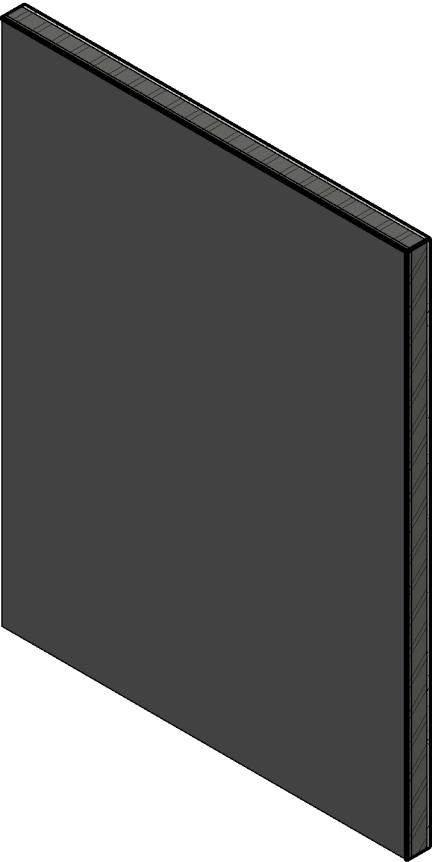
UL DESIGN NO. U419

FIRE RATING: 1 HOUR
STC: 49
SOUND TEST: USG-151205
SYSTEM THICKNESS: 5 3/8"



ASSEMBLY OPTIONS:

- GYPSUM BOARD:** ONE LAYER 5/8" THICK GYPSUM BOARD (UL TYPE ULIX™)
- RESILIENT CHANNEL:** 1/2" 25 GA. RESILIENT CHANNEL SPACED 24" O.C. (SOUND TESTED WITH RC DELUXE®)
- STEEL STUDS:** 3-5/8" STEEL STUDS, EQ20 (0.020"), SPACED 16" O.C.
- INSUALATION:** 3-1/2" THICK GLASS FIBER BATT INSULATION
- GYPSUM BOARD:** ONE LAYER 5/8" THICK GYPSUM BOARD (UL TYPE ULIX™)



NOTES:

STUD AND INSULATION SIZES ARE MINIMUM UNLESS OTHERWISE STATED IN DESIGN.

FOR THE MOST UP-TO-DATE INFORMATION OR ASSEMBLY OPTIONS, REFER TO THE UL FIRE RESISTANCE DIRECTORY.

UL TYPE ULIX™ REQUIRES THE USE OF INSULATION FOR SINGLE-LAYER, STEEL-FRAMED UL FIRE-RATED ASSEMBLIES.

REFER TO THE UL FIRE RESISTANCE DIRECTORY FOR INFORMATION REGARDING PRODUCT ORIENTATION AND FASTENING REQUIREMENTS.