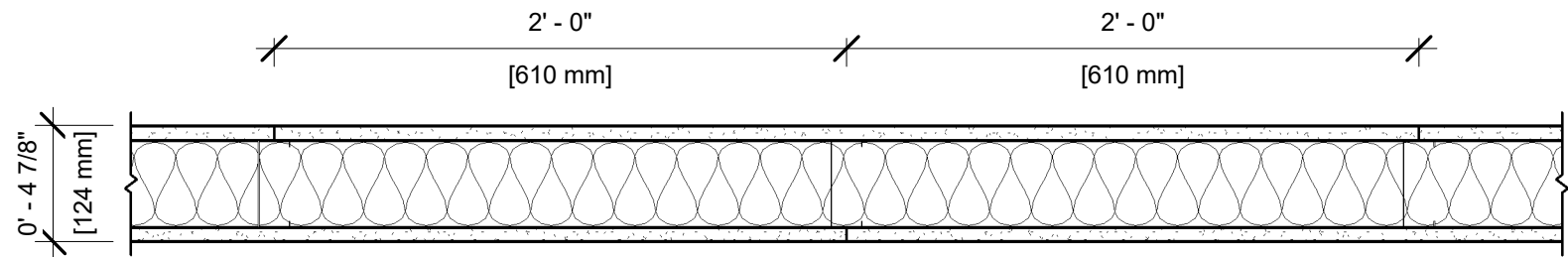


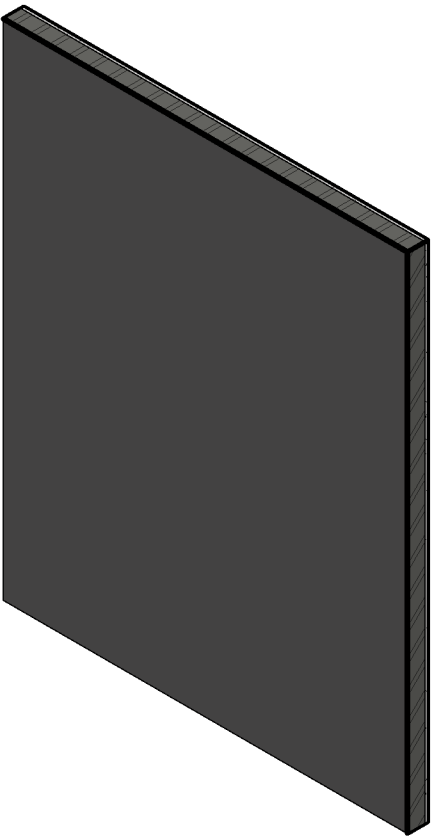
UL DESIGN NO. U419

FIRE RATING: 1 Hour  
STC: 48  
SOUND TEST: RAL-TL11-074  
SYSTEM THICKNESS: 4 7/8"



ASSEMBLY OPTIONS:

- GYPSUM BOARD:** ONE LAYER 5/8" THICK GYPSUM BOARD (UL TYPE SCX™)
- STEEL STUDS:** 3-5/8" STEEL STUDS, EQ25 (0.018"), SPACED 24" O.C.
- INSULATION:** 3-1/2" THICK GLASS FIBER BATT INSULATION
- GYPSUM BOARD:** ONE LAYER 5/8" THICK GYPSUM BOARD (UL TYPE SCX™)



NOTES:

STUD AND INSULATION SIZES ARE MINIMUM UNLESS OTHERWISE STATED IN DESIGN.

FOR THE MOST UP-TO-DATE INFORMATION OR ASSEMBLY OPTIONS, REFER TO THE UL FIRE RESISTANCE DIRECTORY.

REFER TO THE UL FIRE RESISTANCE DIRECTORY FOR INFORMATION REGARDING PRODUCT ORIENTATION AND FASTENING REQUIREMENTS.