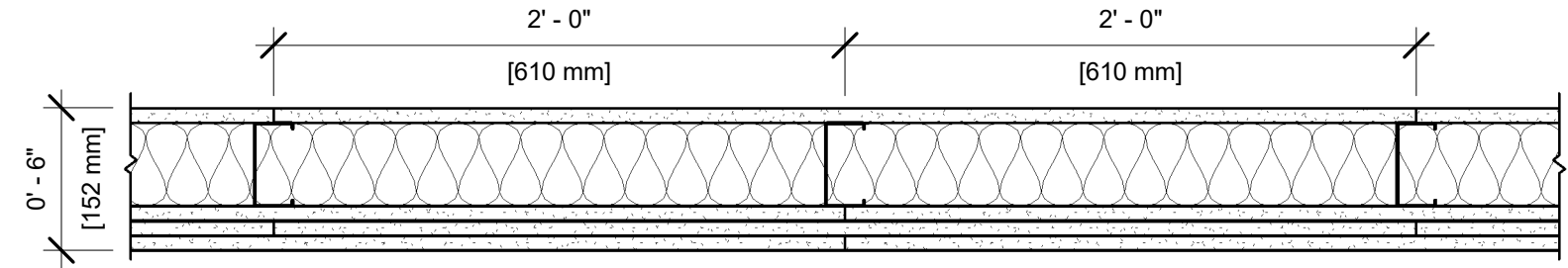


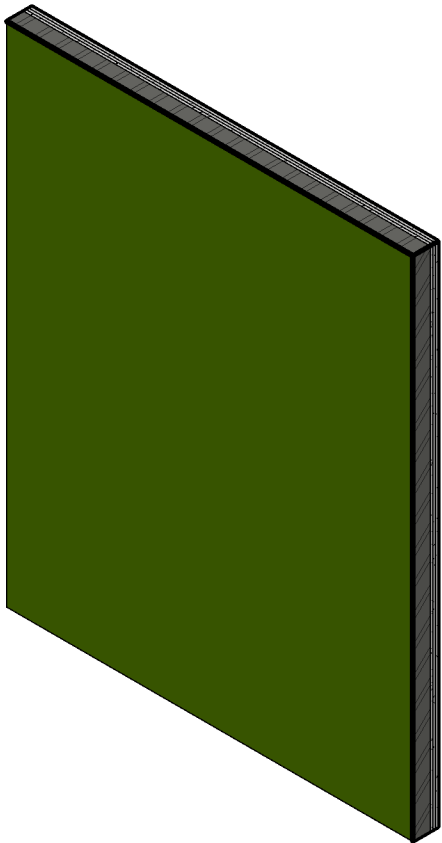
UL DESIGN NO. U408 (EXTERIOR WALL)

FIRE RATING: 2 Hour
STC: N/A
SOUND TEST: N/A
SYSTEM THICKNESS: 6"



ASSEMBLY OPTIONS:

- GYPSUM BOARD:** ONE LAYER 5/8" THICK GYPSUM BOARD (UL TYPE USGX™)
- STEEL STUDS:** 3-1/2" STEEL STUDS, 20 GA. MSG., SPACED 24" MAX O.C.
- INSULATION:** OPTIONAL
- GYPSUM BOARD:** THREE LAYERS 5/8" THICK GYPSUM BOARD (UL TYPE SCX™)



NOTES:

STUD AND INSULATION SIZES ARE MINIMUM UNLESS OTHERWISE STATED IN DESIGN.

FOR THE MOST UP-TO-DATE INFORMATION OR ASSEMBLY OPTIONS, REFER TO THE UL FIRE RESISTANCE DIRECTORY.

REFER TO THE UL FIRE RESISTANCE DIRECTORY FOR INFORMATION REGARDING PRODUCT ORIENTATION AND FASTENING REQUIREMENTS.