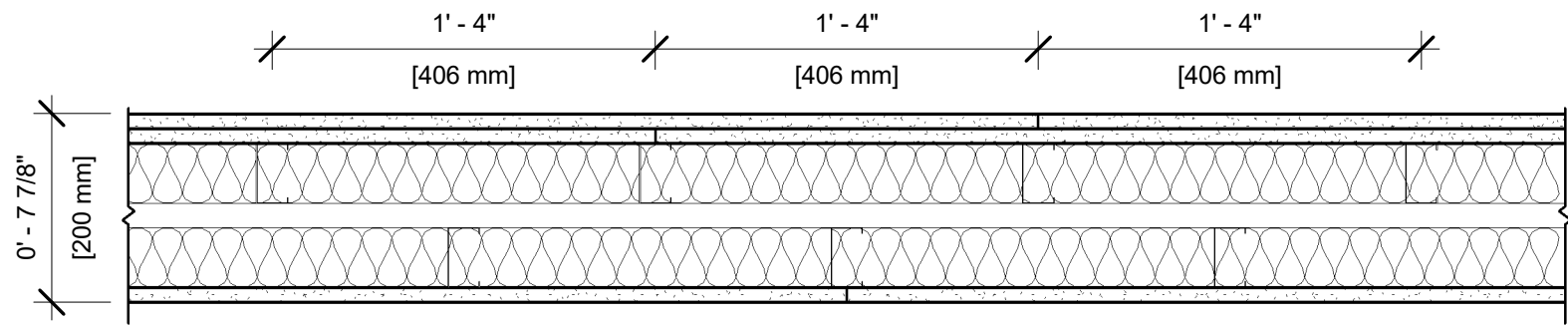


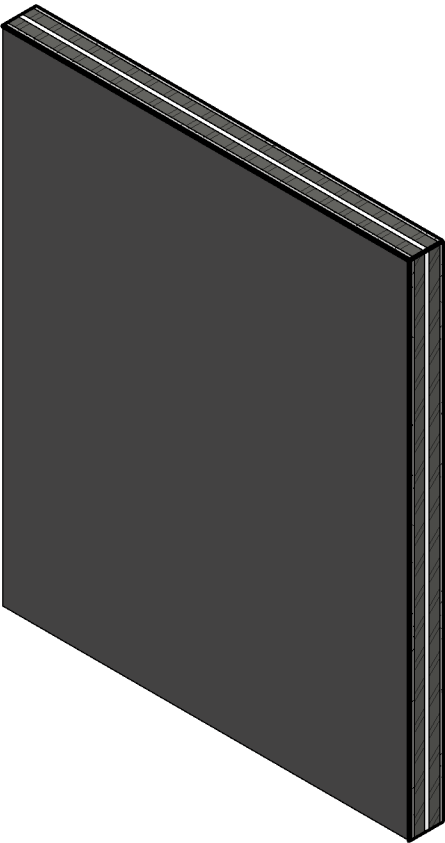
UL DESIGN NO. U493

FIRE RATING: 1 Hour
STC: 62
SOUND TEST: USG-180117
SYSTEM THICKNESS: 7 7/8"



ASSEMBLY OPTIONS:

- GYPSUM BOARD:** TWO LAYERS 5/8" THICK GYPSUM BOARD (UL TYPE SCX™)
- STEEL STUDS:** 2-1/2" STEEL STUDS, EQ20 (0.020"), STAGGERED, SPACED 16" O.C.
- INSULATION:** 2-1/2" GLASS FIBER BATT INSULATION IN CAVITY
- AIR SPACE:** 1" AIR SPACE
- STEEL STUDS:** 2-1/2" STEEL STUDS, EQ20 (0.020"), STAGGERED, SPACED 16" O.C.
- INSULATION:** 2-1/2" GLASS FIBER BATT INSULATION IN CAVITY
- GYPSUM BOARD:** ONE LAYER 5/8" THICK GYPSUM BOARD (UL TYPE SCX™)



NOTES:

STUD AND INSULATION SIZES ARE MINIMUM UNLESS OTHERWISE STATED IN DESIGN.

FOR THE MOST UP-TO-DATE INFORMATION OR ASSEMBLY OPTIONS, REFER TO THE UL FIRE RESISTANCE DIRECTORY.

REFER TO THE UL FIRE RESISTANCE DIRECTORY FOR INFORMATION REGARDING PRODUCT ORIENTATION AND FASTENING REQUIREMENTS.