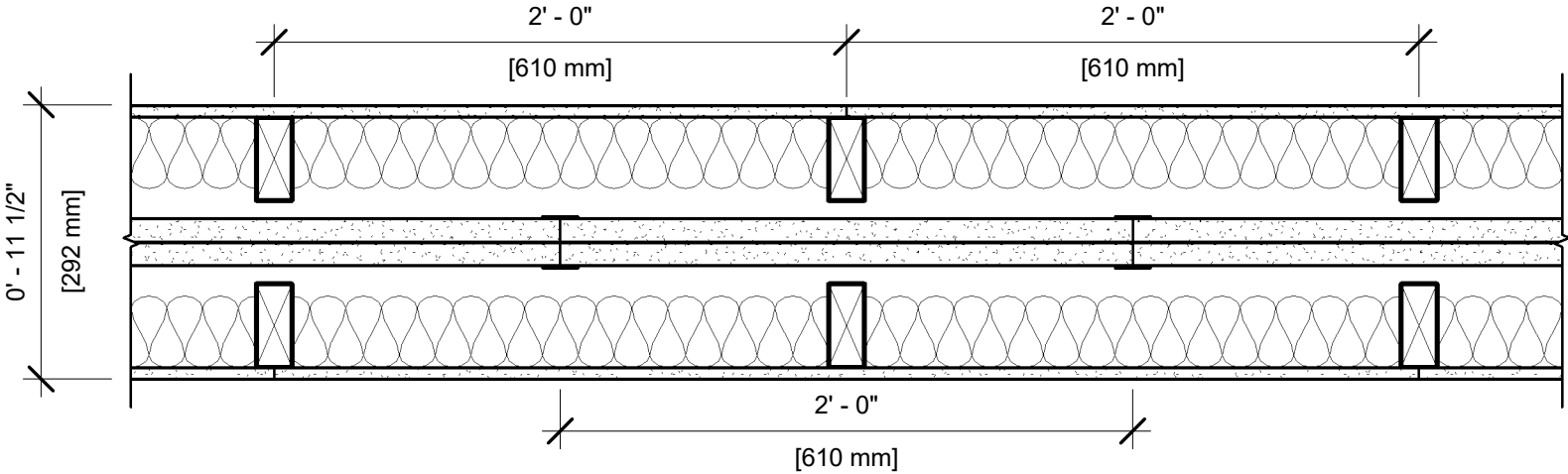


UL DESIGN NO. U336 B

FIRE RATING: 2 HOUR
STC: 60
SOUND TEST: RAL-TL88-350
SYSTEM THICKNESS: 11 1/2"



ASSEMBLY OPTIONS:

- GYPSUM BOARD:

WOOD STUDS:

INSULATION:

AIR SPACE:

STEEL STUDS:

GYPSUM BOARD:

AIR SPACE:

WOOD STUDS:

INSULATION:

GYPSUM BOARD:
- ONE LAYER 1/2" THICK GYPSUM BOARD (USG SHEETROCK BRAND GYPSUM PANELS)

2x4 WOOD STUDS, 24" O.C.

MIN. 3" GLASS FIBER BATT INSULATION IN CAVITY

3/4" AIR SPACE

2" H-STUD, 24" O.C.

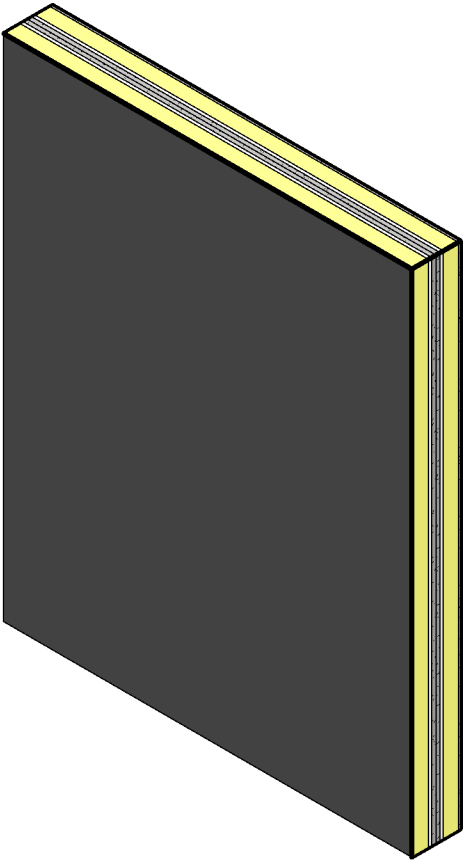
TWO LAYER 1" THICK BY NOM. 2' WIDE GYPSUM LINER PANELS FRICTION FIT (UL TYPE SLX)

3/4" AIR SPACE

2x4 WOOD STUDS, 24" O.C.

MIN. 3" GLASS FIBER BATT INSULATION IN CAVITY

ONE LAYER 1/2" THICK GYPSUM BOARD (USG SHEETROCK BRAND GYPSUM PANELS)



NOTES:

STUD AND INSULATION SIZES ARE MINIMUM UNLESS OTHERWISE STATED IN DESIGN.

FOR THE MOST UP-TO-DATE INFORMATION OR ASSEMBLY OPTIONS, REFER TO THE UL FIRE RESISTANCE DIRECTORY.

REFER TO THE UL FIRE RESISTANCE DIRECTORY FOR INFORMATION REGARDING PRODUCT ORIENTATION AND FASTENING REQUIREMENTS.