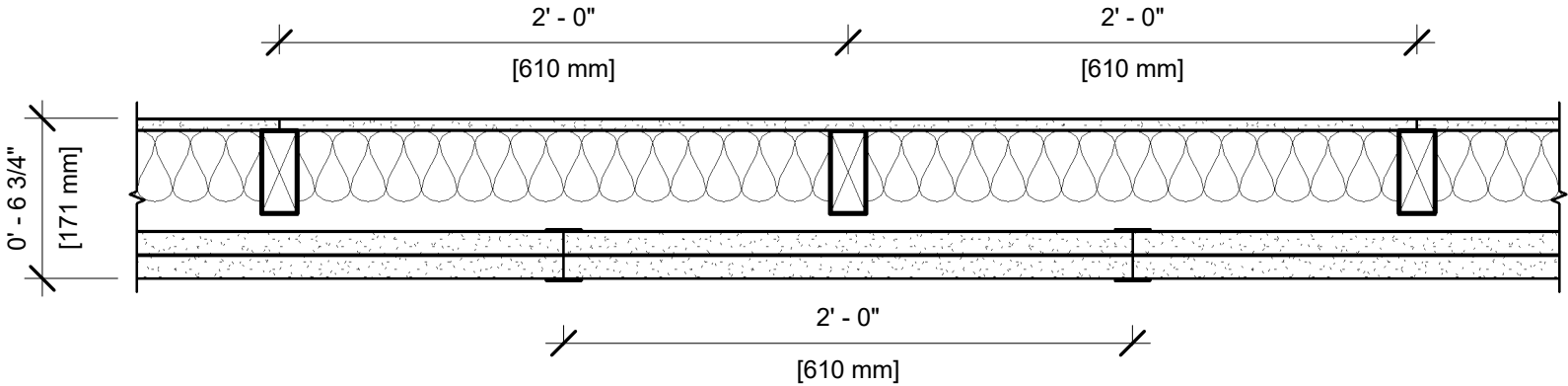


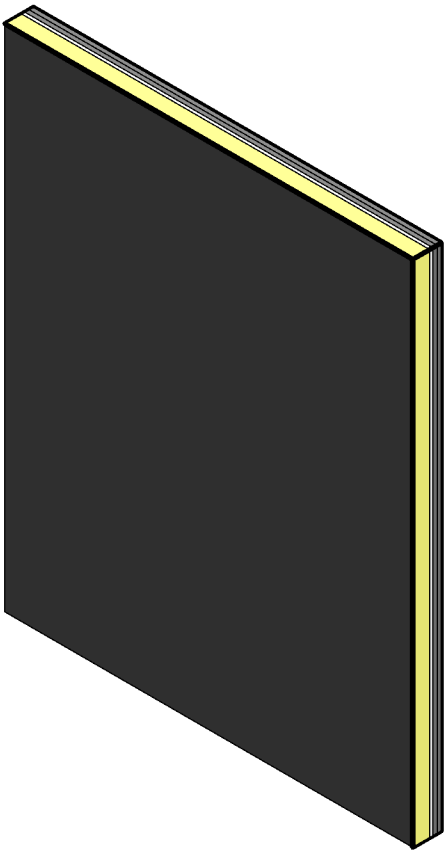
UL DESIGN NO. U336 A

FIRE RATING: 2 HOUR
STC: N/A
SOUND TEST: N/A
SYSTEM THICKNESS: 6 3/4"



ASSEMBLY OPTIONS:

- GYPSUM BOARD:** ONE LAYER 1/2" THICK GYPSUM BOARD (USG SHEETROCK BRAND GYPSUM PANELS)
- WOOD STUDS:** 2x4 WOOD STUDS, 24" O.C.
- INSULATION:** MIN. 3" GLASS FIBER BATT INSULATION IN CAVITY
- AIR SPACE:** 3/4" AIR SPACE
- STEEL STUDS:** 2" H-STUD, 24" O.C.
- GYPSUM BOARD:** TWO LAYER 1" THICK BY NOM. 2' WIDE GYPSUM LINER PANELS FRICTION FIT (UL TYPE SLX™)



NOTES:

STUD AND INSULATION SIZES ARE MINIMUM UNLESS OTHERWISE STATED IN DESIGN.

FOR THE MOST UP-TO-DATE INFORMATION OR ASSEMBLY OPTIONS, REFER TO THE UL FIRE RESISTANCE DIRECTORY.

REFER TO THE UL FIRE RESISTANCE DIRECTORY FOR INFORMATION REGARDING PRODUCT ORIENTATION AND FASTENING REQUIREMENTS.