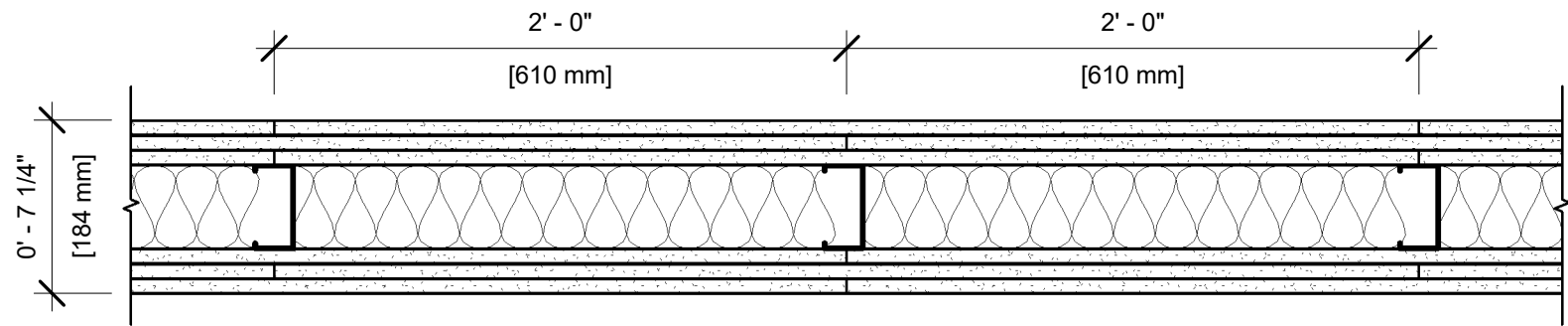


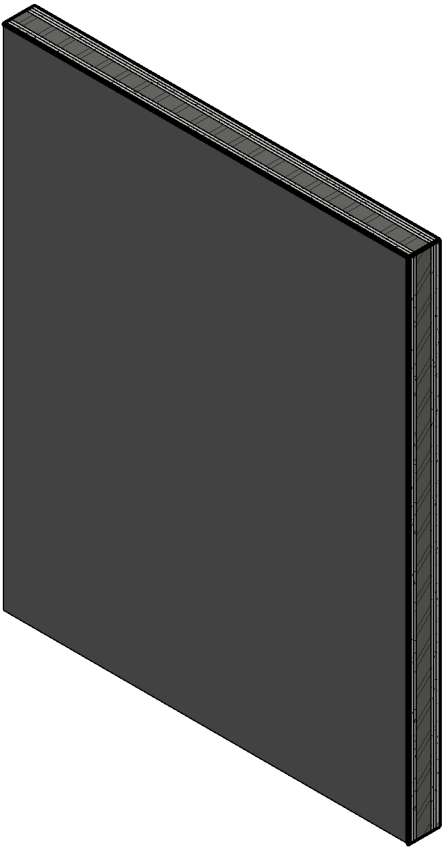
UL DESIGN NO. W460 (BEARING WALL)

FIRE RATING: 3 HOUR  
STC: N/A  
SOUND TEST: N/A  
SYSTEM THICKNESS: 7 1/4"



ASSEMBLY OPTIONS:

- FLOOR CEILING RUNNERS:** CHANNEL-SHAPED, 3-1/2" MIN. WIDE WITH 1-1/2" MIN. LEGS, FABRICATED FROM NO. 20 GA. MIN. (0.0329", MIN. BARE METAL THICKNESS) CORROSION RESISTANT STEEL. ATTACHED TO FLOOR AND CEILING WITH STEEL FASTENERS SPACED NOT GREATER THAN 24" O.C.
- GYPSUM BOARD:** THREE LAYER 5/8" THICK GYPSUM BOARD (UL TYPE ULIX™)
- STEEL STUDS:** 3-1/2" STEEL STUDS, 20 GA. MSG., 24" MAX. O.C.
- INSUALTION:** 3-1/2" THICK GLASS FIBER BATT INSULATION (OPTIONAL)
- LATERAL SUPPORT MEMBERS:** WHERE REQUIRED FOR LATERAL SUPPORT OF STUDS, SUPPORT MAY BE PROVIDED BY MEANS OF STEEL STRAPS, CHANNELS OR OTHER SIMILAR MEANS AS SPECIFIED IN THE DESIGN OF A PARTICULAR STEEL STUD WALL SYSTEM (NOT SHOWN)
- GYPSUM BOARD:** THREE LAYER 5/8" THICK GYPSUM BOARD (UL TYPE ULIX™)



NOTES:

STUD AND INSULATION SIZES ARE MINIMUM UNLESS OTHERWISE STATED IN DESIGN.

FOR THE MOST UP-TO-DATE INFORMATION OR ASSEMBLY OPTIONS, REFER TO THE UL FIRE RESISTANCE DIRECTORY.

UL TYPE ULIX™ REQUIRES THE USE OF INSULATION FOR SINGLE-LAYER, STEEL-FRAMED UL FIRE-RATED ASSEMBLIES.

REFER TO THE UL FIRE RESISTANCE DIRECTORY FOR INFORMATION REGARDING PRODUCT ORIENTATION AND FASTENING REQUIREMENTS.