

CELEBRATION TORSION SPRING

SUSPENDED METAL CEILING SYSTEM

USG SC2687 REVISION 0 ISSUED 07/28/2015



DISCLAIMER: THE USG PRODUCT DETAILS CONTAINED HEREIN ARE INTENDED FOR USE AS PRODUCT REFERENCE MATERIAL BY ARCHITECTS, ENGINEERS, OTHER DESIGN PROFESSIONALS, CONTRACTORS, BUILDING CODE OFFICIALS, OR OTHER COMPETENT CONSTRUCTION INDUSTRY TRADE PROFESSIONALS HAVING AN INTEREST IN THE SELECTION, SPECIFICATION AND USE OF PRODUCTS MANUFACTURED BY THE SUBSIDIARIES OF USG CORPORATION. THE DRAWINGS ARE INTENDED SOLELY AS TECHNICAL SUPPORT INCIDENT TO THE SALE AND USE OF USG PRODUCTS AND NOT INTENDED TO BE A SUBSTITUTE FOR THE DESIGN REVIEW AND APPROVAL OF THE LICENSED DESIGN PROFESSIONALS FOR THE PROJECT. THESE MATERIALS MAY BE PRINTED AND/OR TRANSFERRED ELECTRONICALLY SOLELY AS NEEDED BY THE USER. BECAUSE CAD ELECTRONIC FILES AND BIM (BUILDING INFORMATION MODELING) FILES CAN BE MODIFIED BY OTHER PARTIES, WITHOUT NOTICE OR INDICATION OF SUCH MODIFICATIONS, MODIFICATION OF USG PRODUCT CAD DRAWINGS IS THE SOLE RESPONSIBILITY OF THE DESIGN PROFESSIONAL.

USG CORPORATION
United States Gypsum Company
385 WEST ADAMS STREET, CHICAGO, ILLINOIS 60601
U.S.G. - 4 Y O U W O R K

CELEBRATION TORSION SPRING BASIC SYSTEM DETAILS USG SC2687

DISCLAIMER: THE USG PRODUCT DETAILS CONTAINED HEREIN ARE INTENDED FOR USE AS PRODUCT REFERENCE MATERIAL BY ARCHITECTS, ENGINEERS, OTHER DESIGN PROFESSIONALS, CONTRACTORS, BUILDING CODE OFFICIALS, OR OTHER COMPETENT CONSTRUCTION INDUSTRY TRADE PROFESSIONALS HAVING AN INTEREST IN THE SELECTION, SPECIFICATION AND USE OF PRODUCTS MANUFACTURED BY THE SUBSIDIARIES OF USG CORPORATION. THE DRAWINGS ARE INTENDED SOLELY AS TECHNICAL SUPPORT INCIDENT TO THE SALE AND USE OF USG PRODUCTS AND NOT INTENDED TO BE A SUBSTITUTE FOR THE DESIGN REVIEW AND APPROVAL OF THE LICENSED DESIGN PROFESSIONALS FOR THE PROJECT. THESE MATERIALS MAY BE PRINTED AND/OR TRANSFERRED ELECTRONICALLY SOLELY AS NEEDED BY THE USER. BECAUSE CAD ELECTRONIC FILES AND BIM (BUILDING INFORMATION MODELING) FILES CAN BE MODIFIED BY OTHER PARTIES, WITHOUT NOTICE OR INDICATION OF SUCH MODIFICATIONS, MODIFICATION OF USG PRODUCT CAD DRAWINGS IS THE SOLE RESPONSIBILITY OF THE DESIGN PROFESSIONAL.

ISSUE LOG
00 10/14/2015

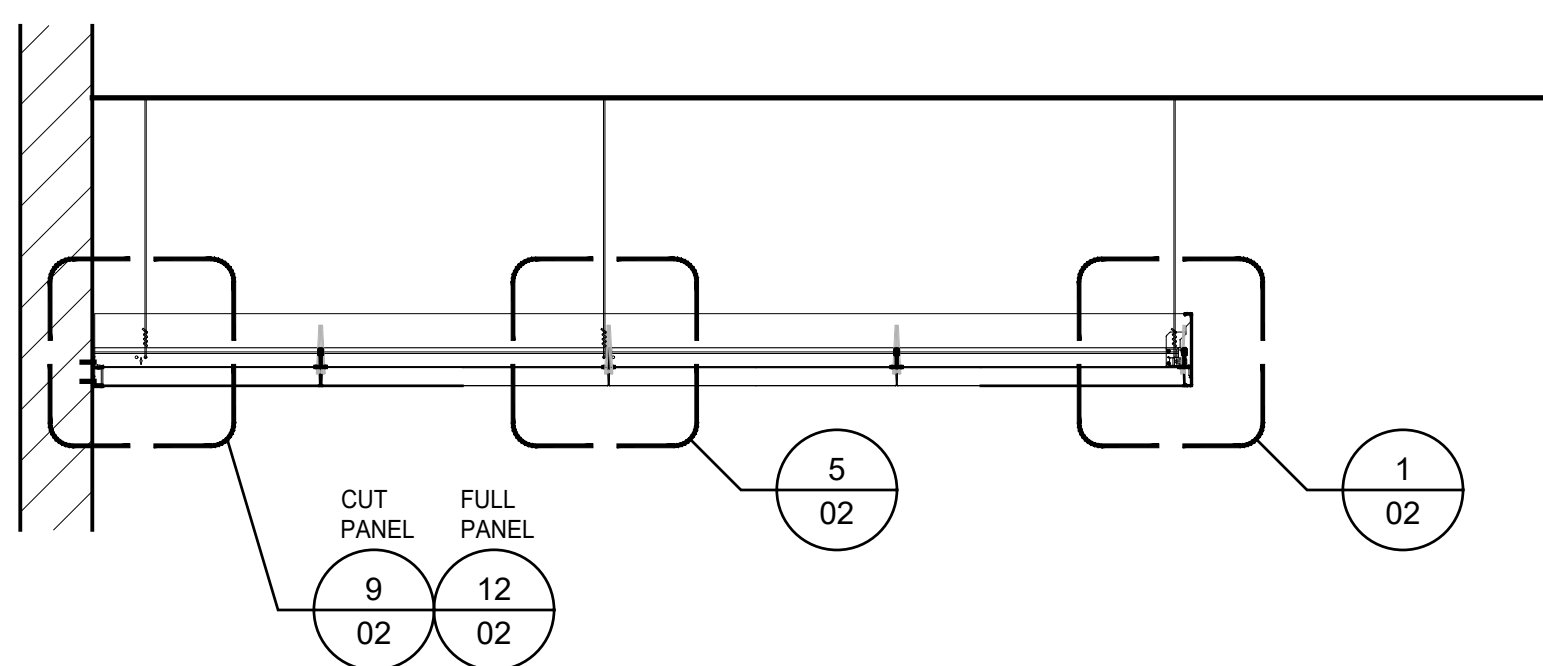
SHEET INFORMATION
CELEBRATION TORSION SPRING SYSTEM OVERVIEW

01

1 OF 2

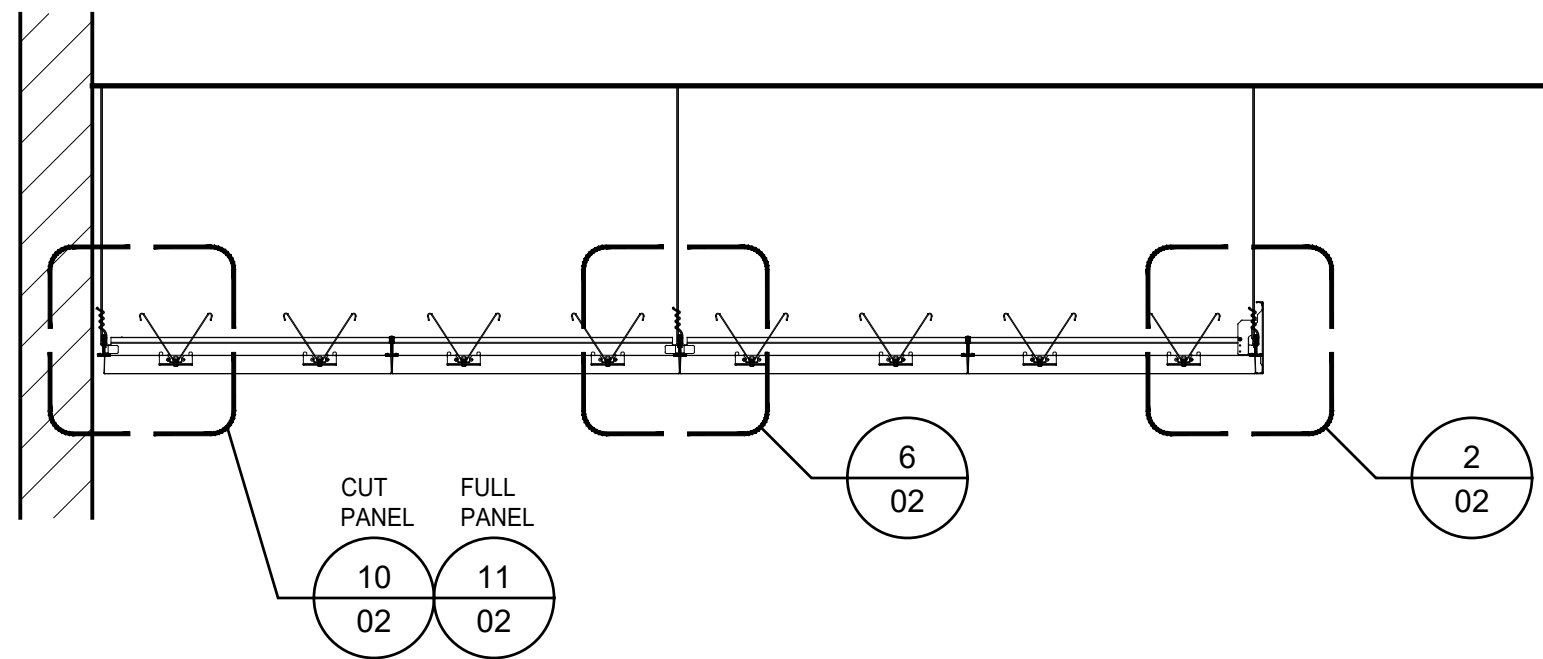
9 SECTION THROUGH CROSS TEE

Scale: 3/4" = 1'-0"



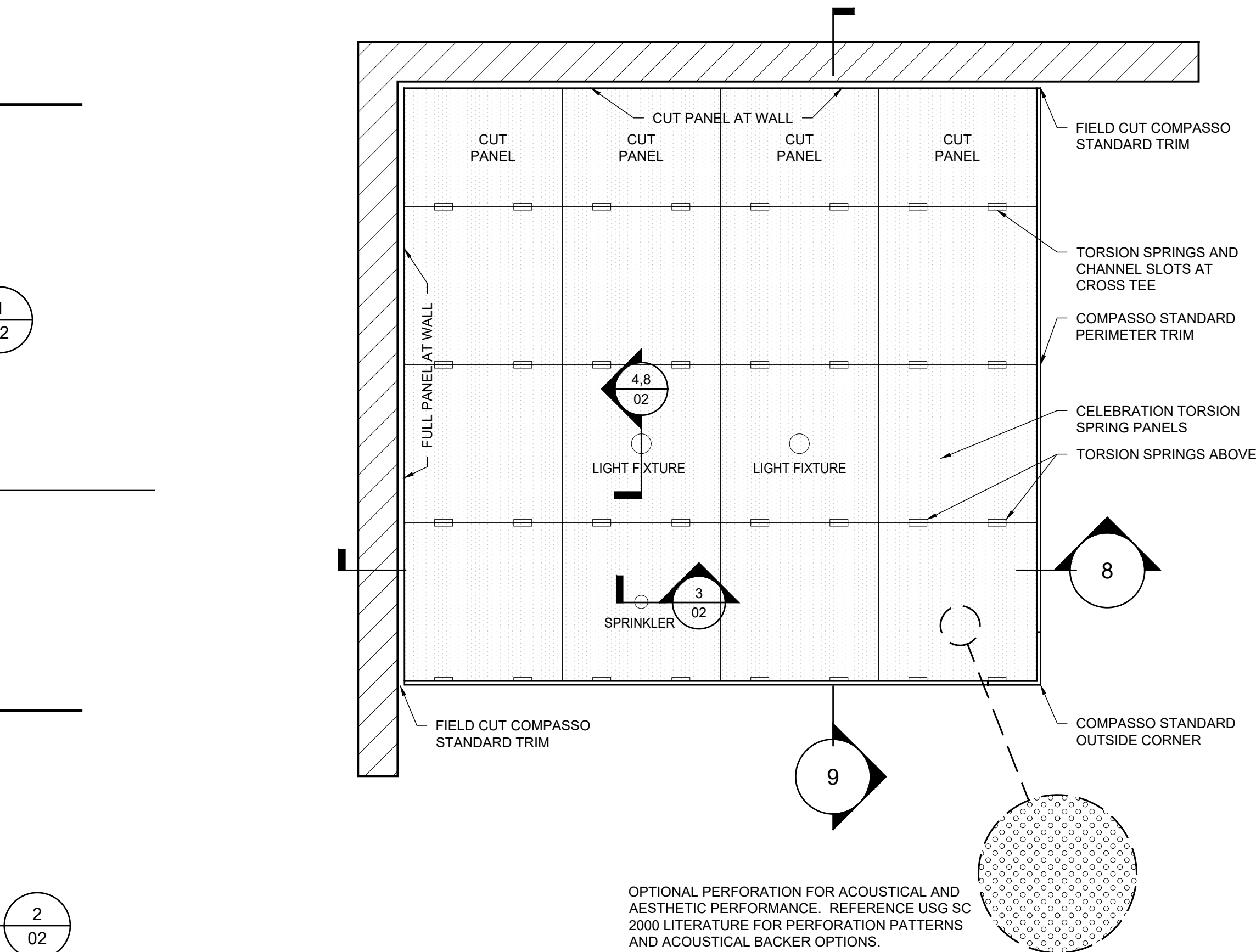
8 SECTION THROUGH MAINTEE

Scale: 3/4" = 1'-0"



7 PANEL PLAN FOR 2' X 2' LAYOUT

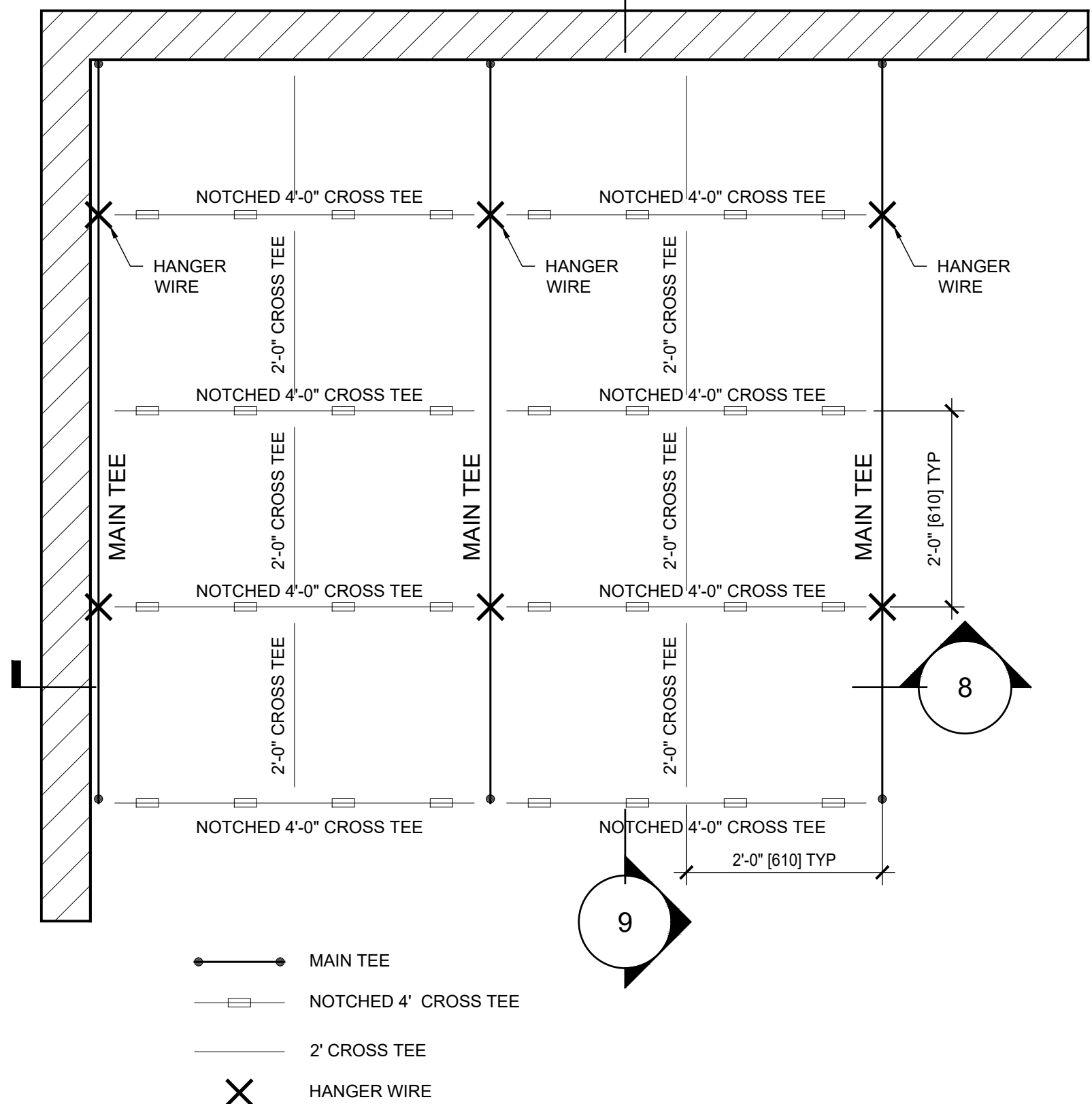
Scale: 3/4" = 1'-0"



OPTIONAL PERFORATION FOR ACOUSTICAL AND AESTHETIC PERFORMANCE. REFERENCE USG SC 2000 LITERATURE FOR PERFORATION PATTERNS AND ACOUSTICAL BACKER OPTIONS.

6 TYPICAL GRID FRAMING PLAN

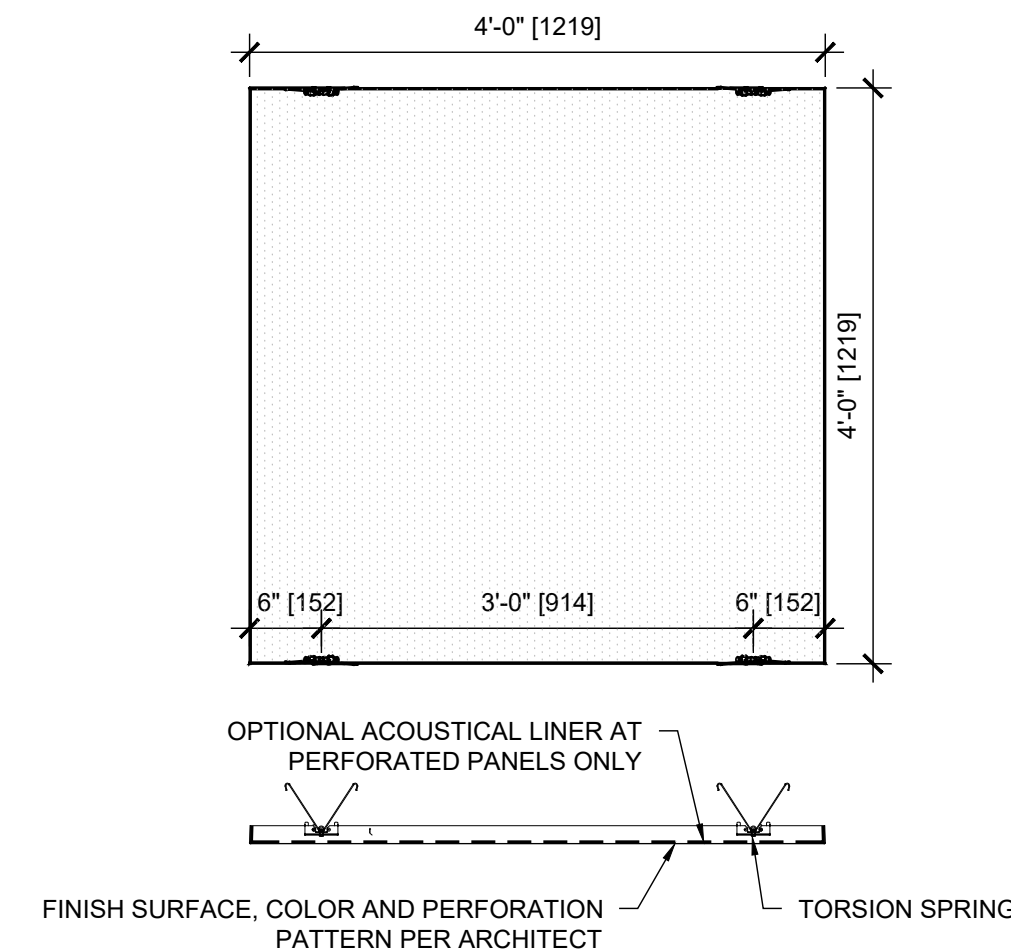
Scale: 3/4" = 1'-0"



- NOTES:
1. REFERENCE USG PUBLICATION IC 630, "TORSION SPRING INSTALLATION GUIDE" FOR MORE INFORMATION.
 2. REFERENCE SEISMICCEILINGS.COM FOR SEISMIC CEILING INFORMATION.
 3. FOR EXTERIOR APPLICATIONS, CONTACT YOUR LOCAL USG REPRESENTATIVE FOR MORE INFORMATION.

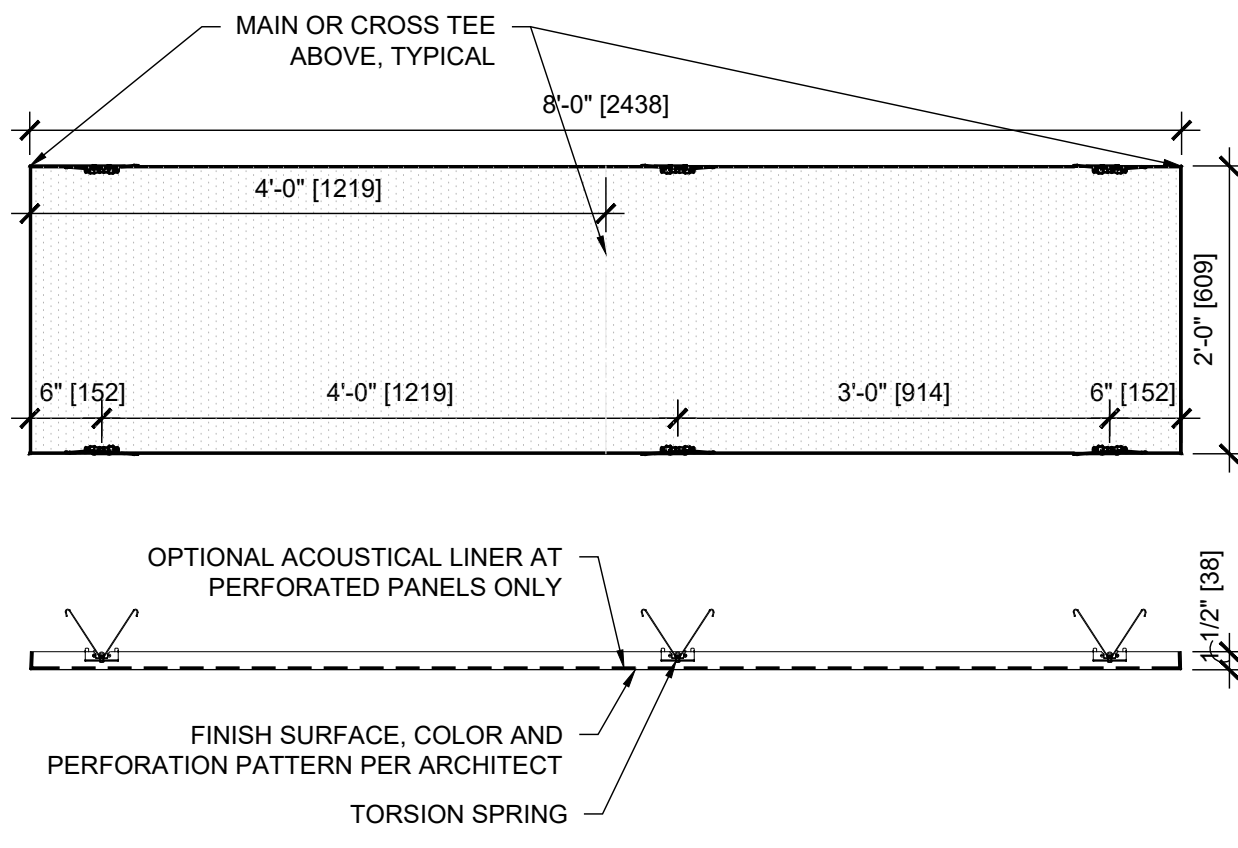
5 4' X 4' CEILING PANEL

Scale: 3/4" = 1'-0"



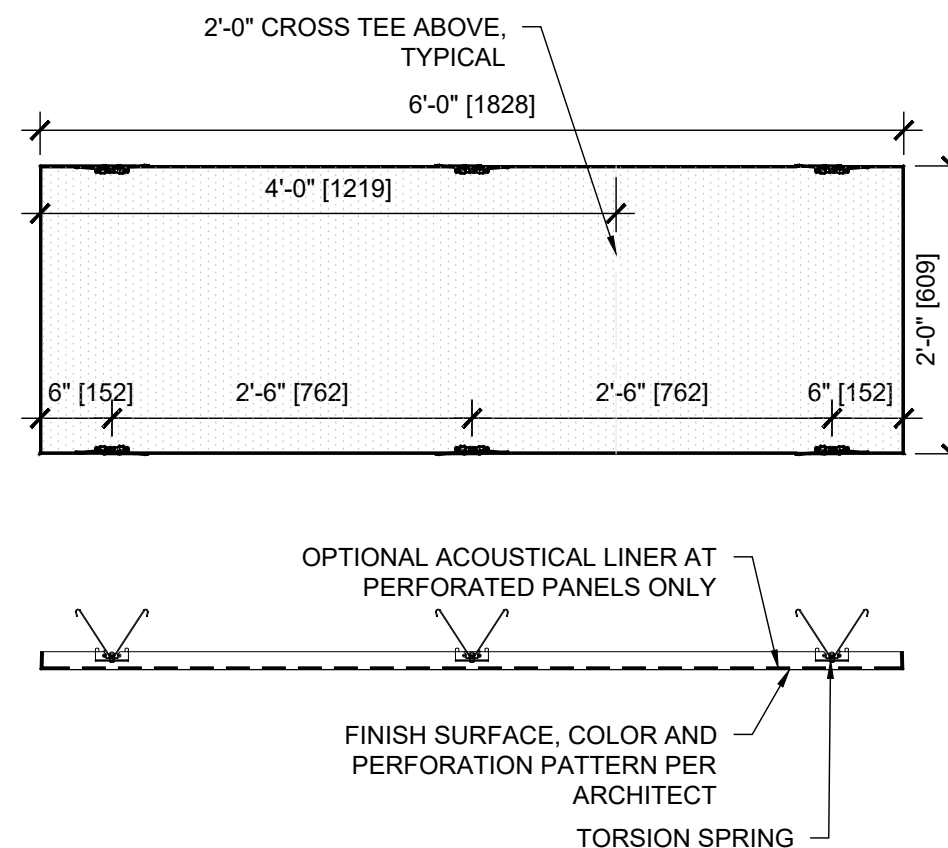
4 2' X 8' CEILING PANEL

Scale: 3/4" = 1'-0"



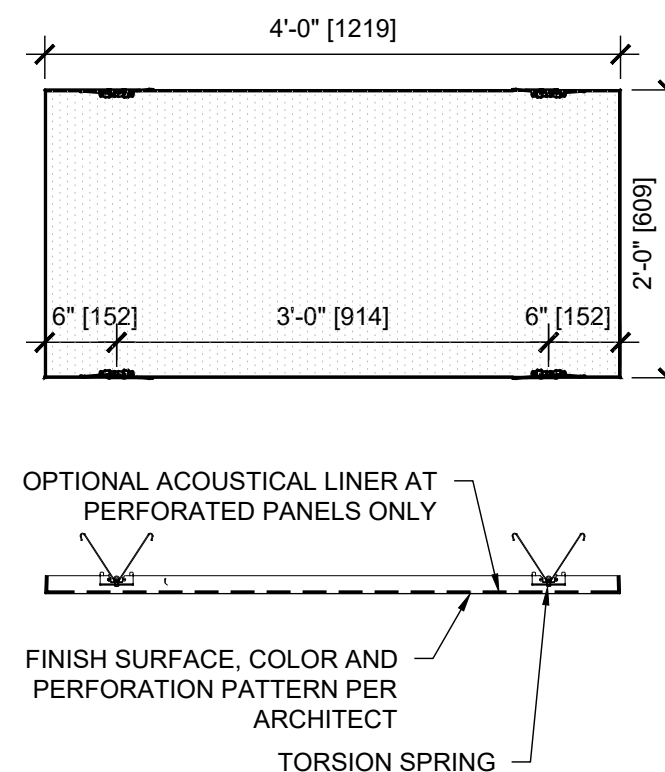
3 2' X 6' CEILING PANEL

Scale: 3/4" = 1'-0"



2 2' X 4' CEILING PANEL

Scale: 3/4" = 1'-0"



1 2' X 2' CEILING PANEL

Scale: 3/4" = 1'-0"

