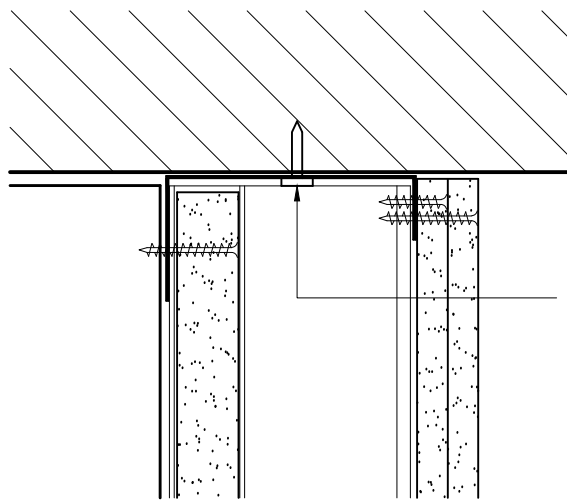
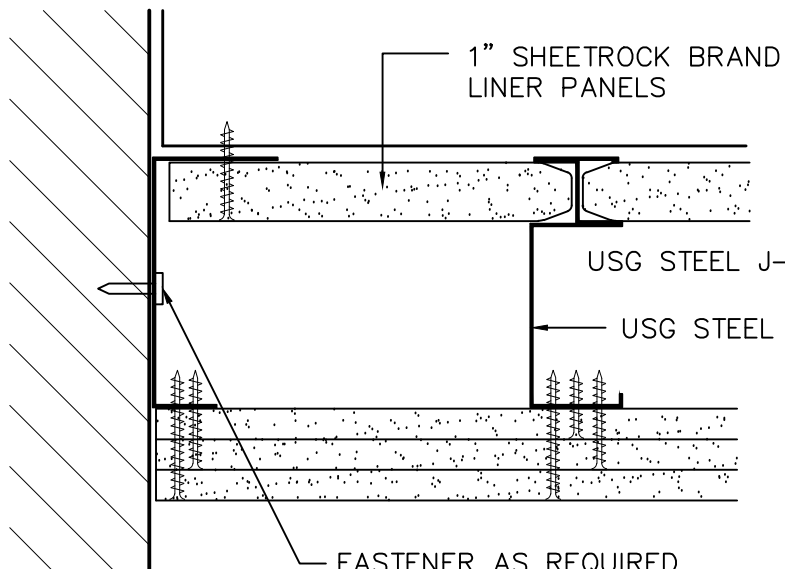


DUCT SURFACE



POWER-ACTUATED  
FASTENER 24" O.C.  
(SHEAR & WITHDRAWAL RESISTANCE  
AS REQUIRED BY  
SPECIFIC DESIGN CONDITIONS)

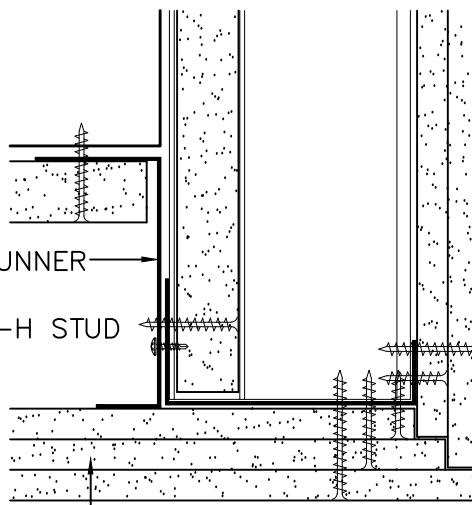


1" SHEETROCK BRAND  
LINER PANELS

USG STEEL J-RUNNER

USG STEEL C-H STUD

FASTENER AS REQUIRED  
24" SPACING MAX.



SHEETROCK BRAND GYPSUM PANELS  
 $\frac{1}{2}$ " FIRECODE 'C' CORE OR  $\frac{5}{8}$ " FIRECODE

## METAL DUCT ENCLOSURE

SCALE: FULL

DATE: 09 / 04 / 01

UNITED STATES GYPSUM COMPANY

This SHAFT WALL SYSTEM DETAIL must  
not be used without a complete evaluation by the owner's design professional  
to verify the suitability of the design for a given structure.

