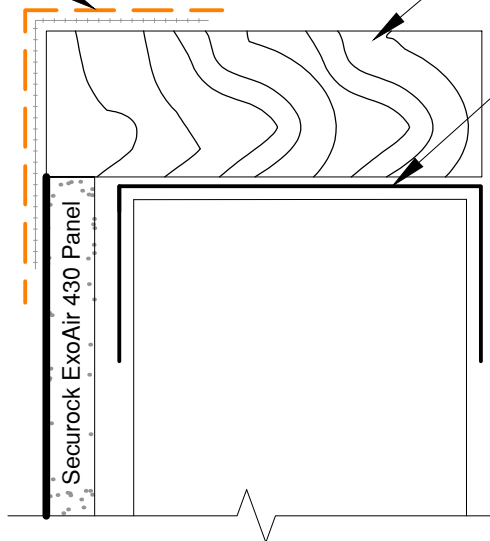


ExoAir 230 at 50 wet mils
with reinforcing mesh

Wood Buck

Steel Framing



NOTES:

- Apply ExoAir Primer to all exposed gypsum core prior to application of membrane
- Slope to the exterior 1/8" per 12"
- Install reinforcing mesh with 50 wet mils of ExoAir 230, completely covering reinforcing mesh
- Flashing must be installed past thermal break
- Gaps in excess of 1/8" must be detailed with Dymonic 100

See securockexoair.com for the most up-to-date product information

This detail is intended for conceptual purposes only. Must be reviewed by a project/design professional

The following trademarks used herein are owned by USG Corporation or its subsidiaries: SECUROCK, USG, USG in stylized letters. The following trademarks used herein are owned by Tremco Incorporated or its subsidiaries: Tremco, ExoAir, Spectrem, Dymonic, Proglaze, Vulkem.



PERFORMANCE BUILT IN
www.securockexoair.com

United States Gypsum Company
550 West Adams Street
Chicago, IL 60661

USG Technical & Customer Support:
800.USG.4YOU (874-4968)

Tremco Commercial Sealants & Waterproofing
3735 Green Road
Beachwood, OH 44122

Tremco Technical Support:
866.209.2404

SECUROCK® ExoAir® 430 Panel

Project:
Detail: Rough Opening - Fluid-Applied Flashing - Wood Buck

Drawn by: KAB

Approved by: DM

Scale: NTS

File Name:

13684

Date: 3/20/2017

Rev #

00