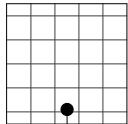
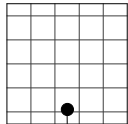


Mars™ High-NRC Acoustical Panels

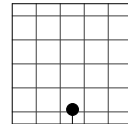
Manufacturer	Material: Model	Material: NRC	Material: CAC	Material: LR	Material: Embodied Carbon (kgCO2e/ft²)	Material: Description
USG	Mars™ High-NRC 80/35, Mineral Fiber, 86100, Flat White 050	0.8	35	0.9	0.63	24" x 24" Mineral Fiber, Square Edge 7/8" Acoustic Ceiling Tile
USG	Mars™ High-NRC 80/35, Mineral Fiber, 86300, Flat White 050	0.8	35	0.9	0.63	24" x 48" Mineral Fiber, Square Edge 7/8" Acoustic Ceiling Tile
USG	Mars™ High-NRC 80/35, Mineral Fiber, 86400, Flat White 050	0.8	35	0.9	0.63	30" x 30" Mineral Fiber, Finline Bevel 7/8" Acoustic Ceiling Tile
USG	Mars™ High-NRC 80/35, Mineral Fiber, 86426, Flat White 050	0.8	35	0.9	0.63	30" x 30" Mineral Fiber, Square Edge 7/8" Acoustic Ceiling Tile
USG	Mars™ High-NRC 80/35, Mineral Fiber, 86429, Flat White 050	0.8	35	0.9	0.63	30" x 60" Mineral Fiber, Square Edge 7/8" Acoustic Ceiling Tile
USG	Mars™ High-NRC 80/35, Mineral Fiber, 86466, Flat White 050	0.8	35	0.9	0.63	30" x 60" Mineral Fiber, Shadowline Tapered 7/8" Acoustic Ceiling Tile
USG	Mars™ High-NRC 80/35, Mineral Fiber, 86497, Flat White 050	0.8	35	0.9	0.63	30" x 60" Mineral Fiber, Finline Bevel 7/8" Acoustic Ceiling Tile
USG	Mars™ High-NRC 80/35, Mineral Fiber, 86500, Flat White 050	0.8	35	0.9	0.63	30" x 30" Mineral Fiber, Shadowline Tapered 7/8" Acoustic Ceiling Tile
USG	Mars™ High-NRC 80/35, Mineral Fiber, 87100, Flat White 050	0.8	35	0.9	0.63	24" x 24" Mineral Fiber, Finline Bevel 7/8" Acoustic Ceiling Tile
USG	Mars™ High-NRC 80/35, Mineral Fiber, 87200, Flat White 050	0.8	35	0.9	0.63	24" x 24" Mineral Fiber, Shadowline Tapered 7/8" Acoustic Ceiling Tile
USG	Mars™ High-NRC 80/35, Mineral Fiber, 89500, Flat White 050	0.8	35	0.9	0.63	24" x 48" Mineral Fiber, Finline Bevel 7/8" Acoustic Ceiling Tile
USG	Mars™ High-NRC 80/35, Mineral Fiber, 89600, Flat White 050	0.8	35	0.9	0.63	24" x 48" Mineral Fiber, Shadowline Tapered 7/8" Acoustic Ceiling Tile
USG	Mars™ High-NRC 85/35, Mineral Fiber, 80113, Flat White 050	0.85	35	0.9	0.622	30" x 30" Mineral Fiber, Square Edge 7/8" Acoustic Ceiling Tile
USG	Mars™ High-NRC 85/35, Mineral Fiber, 80139, Flat White 050	0.85	35	0.9	0.622	30" x 30" Mineral Fiber, Shadowline Tapered 7/8" Acoustic Ceiling Tile
USG	Mars™ High-NRC 85/35, Mineral Fiber, 80165, Flat White 050	0.85	35	0.9	0.622	30" x 30" Mineral Fiber, Finline Bevel 7/8" Acoustic Ceiling Tile
USG	Mars™ High-NRC 85/35, Mineral Fiber, 88134, Flat White 050	0.85	35	0.9	0.622	24" x 24" Mineral Fiber, Square Edge 7/8" Acoustic Ceiling Tile
USG	Mars™ High-NRC 85/35, Mineral Fiber, 88135, Flat White 050	0.85	35	0.9	0.622	24" x 24" Mineral Fiber, Shadowline Tapered 7/8" Acoustic Ceiling Tile
USG	Mars™ High-NRC 85/35, Mineral Fiber, 88136, Flat White 050	0.85	35	0.9	0.622	24" x 24" Mineral Fiber, Finline Bevel 7/8" Acoustic Ceiling Tile
USG	Mars™ High-NRC 85/35, Mineral Fiber, 89134, Flat White 050	0.85	35	0.9	0.622	24" x 48" Mineral Fiber, Square Edge 7/8" Acoustic Ceiling Tile
USG	Mars™ High-NRC 85/35, Mineral Fiber, 89135, Flat White 050	0.85	35	0.9	0.622	24" x 48" Mineral Fiber, Shadowline Tapered 7/8" Acoustic Ceiling Tile
USG	Mars™ High-NRC 85/35, Mineral Fiber, 89136, Flat White 050	0.85	35	0.9	0.622	24" x 48" Mineral Fiber, Finline Bevel 7/8" Acoustic Ceiling Tile
USG	Mars™ High-NRC 85/35, Mineral Fiber, 89140, Flat White 050	0.85	35	0.9	0.622	30" x 60" Mineral Fiber, Square Edge 7/8" Acoustic Ceiling Tile
USG	Mars™ High-NRC 85/35, Mineral Fiber, 89141, Flat White 050	0.85	35	0.9	0.622	30" x 60" Mineral Fiber, Shadowline Tapered 7/8" Acoustic Ceiling Tile
USG	Mars™ High-NRC 85/35, Mineral Fiber, 89142, Flat White 050	0.85	35	0.9	0.622	30" x 60" Mineral Fiber, Finline Bevel 7/8" Acoustic Ceiling Tile
USG	Mars™ High-NRC 90/30, Mineral Fiber, 80213, Flat White 050	0.9	30	0.9	0.712	30" x 30" Mineral Fiber, Square Edge 1" Acoustic Ceiling Tile
USG	Mars™ High-NRC 90/30, Mineral Fiber, 80239, Flat White 050	0.9	30	0.9	0.712	30" x 30" Mineral Fiber, Shadowline Tapered 1" Acoustic Ceiling Tile
USG	Mars™ High-NRC 90/30, Mineral Fiber, 80265, Flat White 050	0.9	30	0.9	0.712	30" x 30" Mineral Fiber, Finline Bevel 1" Acoustic Ceiling Tile
USG	Mars™ High-NRC 90/30, Mineral Fiber, 88137, Flat White 050	0.9	30	0.9	0.712	24" x 24" Mineral Fiber, Square Edge 1" Acoustic Ceiling Tile
USG	Mars™ High-NRC 90/30, Mineral Fiber, 88138, Flat White 050	0.9	30	0.9	0.712	24" x 24" Mineral Fiber, Shadowline Tapered 1" Acoustic Ceiling Tile
USG	Mars™ High-NRC 90/30, Mineral Fiber, 88139, Flat White 050	0.9	30	0.9	0.712	24" x 24" Mineral Fiber, Finline Bevel 1" Acoustic Ceiling Tile
USG	Mars™ High-NRC 90/30, Mineral Fiber, 89137, Flat White 050	0.9	30	0.9	0.712	24" x 48" Mineral Fiber, Square Edge 1" Acoustic Ceiling Tile
USG	Mars™ High-NRC 90/30, Mineral Fiber, 89138, Flat White 050	0.9	30	0.9	0.712	24" x 48" Mineral Fiber, Shadowline Tapered 1" Acoustic Ceiling Tile
USG	Mars™ High-NRC 90/30, Mineral Fiber, 89139, Flat White 050	0.9	30	0.9	0.712	24" x 48" Mineral Fiber, Finline Bevel 1" Acoustic Ceiling Tile
USG	Mars™ High-NRC 90/30, Mineral Fiber, 89143, Flat White 050	0.9	30	0.9	0.712	30" x 60" Mineral Fiber, Square Edge 1" Acoustic Ceiling Tile
USG	Mars™ High-NRC 90/30, Mineral Fiber, 89144, Flat White 050	0.9	30	0.9	0.712	30" x 60" Mineral Fiber, Shadowline Tapered 1" Acoustic Ceiling Tile
USG	Mars™ High-NRC 90/30, Mineral Fiber, 89145, Flat White 050	0.9	30	0.9	0.712	30" x 60" Mineral Fiber, Finline Bevel 1", 89145 Acoustic Ceiling Tile



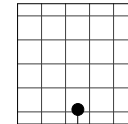
ACT - USG - 24" x 24" - Mars™ High-NRC 80/35 - Mineral Fiber - FLB 7/8" - 87100 - Flat White 050



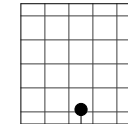
ACT - USG - 24" x 24" - Mars™ High-NRC 80/35 - Mineral Fiber - FLB 7/8" - 87200 - Flat White 050



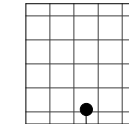
ACT - USG - 24" x 24" - Mars™ High-NRC 80/35 - Mineral Fiber - FLB 7/8" - 86100 - Flat White 050



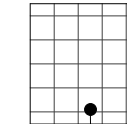
ACT - USG - 24" x 24" - Mars™ High-NRC 85/35 - Mineral Fiber - FLB 7/8" - 88136 - Flat White 050



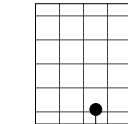
ACT - USG - 24" x 24" - Mars™ High-NRC 85/35 - Mineral Fiber - FLB 7/8" - 88135 - Flat White 050



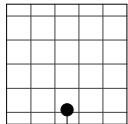
ACT - USG - 24" x 24" - Mars™ High-NRC 85/35 - Mineral Fiber - SQ 7/8" - 88134 - Flat White 050



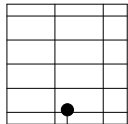
ACT - USG - 24" x 24" - Mars™ High-NRC 90/30 - Mineral Fiber - FLB 1" - 88139 - Flat White 050



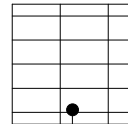
ACT - USG - 24" x 24" - Mars™ High-NRC 90/30 - Mineral Fiber - FLB 1" - 88138 - Flat White 050



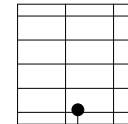
ACT - USG - 24" x 24" - Mars™ High-NRC 90/30 - Mineral Fiber - SQ 1" - 88137 - Flat White 050



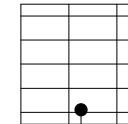
ACT - USG - 24" x 48" - Mars™ High-NRC 80/35 - Mineral Fiber - FLB 7/8" - 89500 - Flat White 050



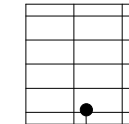
ACT - USG - 24" x 48" - Mars™ High-NRC 80/35 - Mineral Fiber - FLB 7/8" - 89500 - Flat White 050



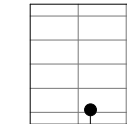
ACT - USG - 24" x 48" - Mars™ High-NRC 80/35 - Mineral Fiber - FLB 7/8" - 89500 - Flat White 050



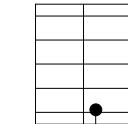
ACT - USG - 24" x 48" - Mars™ High-NRC 80/35 - Mineral Fiber - FLB 7/8" - 89500 - Flat White 050



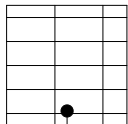
ACT - USG - 24" x 48" - Mars™ High-NRC 80/35 - Mineral Fiber - SQ 7/8" - 89135 - Flat White 050



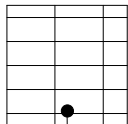
ACT - USG - 24" x 48" - Mars™ High-NRC 85/35 - Mineral Fiber - FLB 7/8" - 89134 - Flat White 050



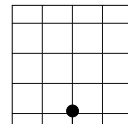
ACT - USG - 24" x 48" - Mars™ High-NRC 90/30 - Mineral Fiber - FLB 1" - 88139 - Flat White 050



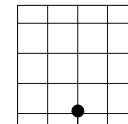
ACT - USG - 24" x 48" - Mars™ High-NRC 90/30 - Mineral Fiber - FLB 1" - 89138 - Flat White 050



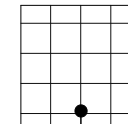
ACT - USG - 24" x 48" - Mars™ High-NRC 90/30 - Mineral Fiber - SQ 1" - 89137 - Flat White 050



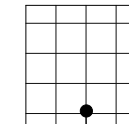
ACT - USG - 30" x 30" - Mars™ High-NRC 80/35 - Mineral Fiber - FLB 7/8" - 86400 - Flat White 050



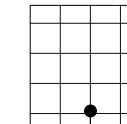
ACT - USG - 30" x 30" - Mars™ High-NRC 80/35 - Mineral Fiber - FLB 7/8" - 86400 - Flat White 050



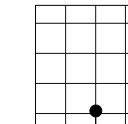
ACT - USG - 30" x 30" - Mars™ High-NRC 80/35 - Mineral Fiber - FLB 7/8" - 86426 - Flat White 050



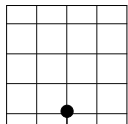
ACT - USG - 30" x 30" - Mars™ High-NRC 85/35 - Mineral Fiber - FLB 7/8" - 80165 - Flat White 050



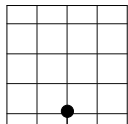
ACT - USG - 30" x 30" - Mars™ High-NRC 85/35 - Mineral Fiber - SQ 7/8" - 80139 - Flat White 050



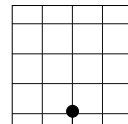
ACT - USG - 30" x 30" - Mars™ High-NRC 85/35 - Mineral Fiber - FLB 7/8" - 80138 - Flat White 050



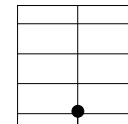
ACT - USG - 30" x 30" - Mars™ High-NRC 90/30 - Mineral Fiber - FLB 1" - 80265 - Flat White 050



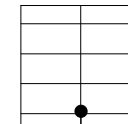
ACT - USG - 30" x 30" - Mars™ High-NRC 90/30 - Mineral Fiber - FLB 1" - 80239 - Flat White 050



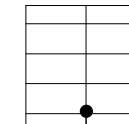
ACT - USG - 30" x 30" - Mars™ High-NRC 90/30 - Mineral Fiber - SQ 1" - 80213 - Flat White 050



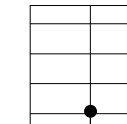
ACT - USG - 30" x 30" - Mars™ High-NRC 80/35 - Mineral Fiber - FLB 7/8" - 86497 - Flat White 050



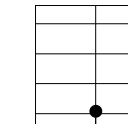
ACT - USG - 30" x 60" - Mars™ High-NRC 80/35 - Mineral Fiber - FLB 7/8" - 86486 - Flat White 050



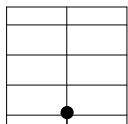
ACT - USG - 30" x 60" - Mars™ High-NRC 80/35 - Mineral Fiber - SQ 7/8" - 86429 - Flat White 050



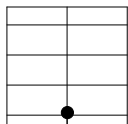
ACT - USG - 30" x 60" - Mars™ High-NRC 85/35 - Mineral Fiber - FLB 7/8" - 89142 - Flat White 050



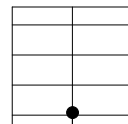
ACT - USG - 30" x 60" - Mars™ High-NRC 85/35 - Mineral Fiber - FLB 7/8" - 89141 - Flat White 050



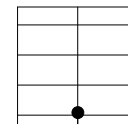
ACT - USG - 30" x 60" - Mars™ High-NRC 85/35 - Mineral Fiber - SQ 7/8" - 89140 - Flat White 050



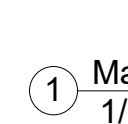
ACT - USG - 30" x 60" - Mars™ High-NRC 90/30 - Mineral Fiber - FLB 1" - 89145 - Flat White 050



ACT - USG - 30" x 60" - Mars™ High-NRC 90/30 - Mineral Fiber - SQ 1" - 89143 - Flat White 050



ACT - USG - 30" x 60" - Mars™ High-NRC 90/30 - Mineral Fiber - FLB 1" - 89144 - Flat White 050



ACT - USG - 30" x 60" - Mars™ High-NRC 90/30 - Mineral Fiber - SQ 1" - 89143 - Flat White 050

1 Mars™ High-NRC Acoustical Panels
1/16" = 1'-0"



USG Corporation
550 West Adams Street, Chicago, IL 60661
T. 800-USG4YOU www.USG.com

Mars™ High-NRC Acoustical Panels

ISSUE RECORD:
10/26/17

ISSUE: DATE:
5 01/13/21

SHEET INFORMATION:
REVIT MATERIAL FILE

1600

DISCLAIMER: THE USG PRODUCT DETAILS CONTAINED HEREIN ARE INTENDED FOR USE AS PRODUCT REFERENCE MATERIAL BY ARCHITECTS, ENGINEERS, OTHER DESIGN PROFESSIONALS, CONTRACTORS, BUILDING CODE OFFICIALS, OR OTHER COMPETENT CONSTRUCTION INDUSTRY TRADE PROFESSIONALS HAVING AN INTEREST IN THE SELECTION, SPECIFICATION AND USE OF PRODUCTS MANUFACTURED BY THE SUBSIDIARIES OF USG CORPORATION. THE DRAWINGS ARE INTENDED SOLELY AS TECHNICAL SUPPORT INCIDENT TO THE SALE AND USE OF USG PRODUCTS AND NOT INTENDED TO BE A SUBSTITUTE FOR THE DESIGN REVIEW AND APPROVAL OF THE LICENSED DESIGN PROFESSIONALS FOR THE PROJECT. THESE MATERIALS MAY BE PRINTED AND/OR TRANSFERRED ELECTRONICALLY SOLELY AS NEEDED BY THE USER, BECAUSE CAD ELECTRONIC FILES AND BIM (BUILDING INFORMATION MODELING) FILES CAN BE MODIFIED BY OTHER PARTIES, WITHOUT NOTICE OR INDICATION OF SUCH MODIFICATIONS, MODIFICATION OF USG PRODUCT CAD AND BIM DRAWINGS ARE THE SOLE RESPONSIBILITY OF THE DESIGN PROFESSIONAL. ©2021 USG CORPORATION.