

# WALL PRIORITY LEGEND

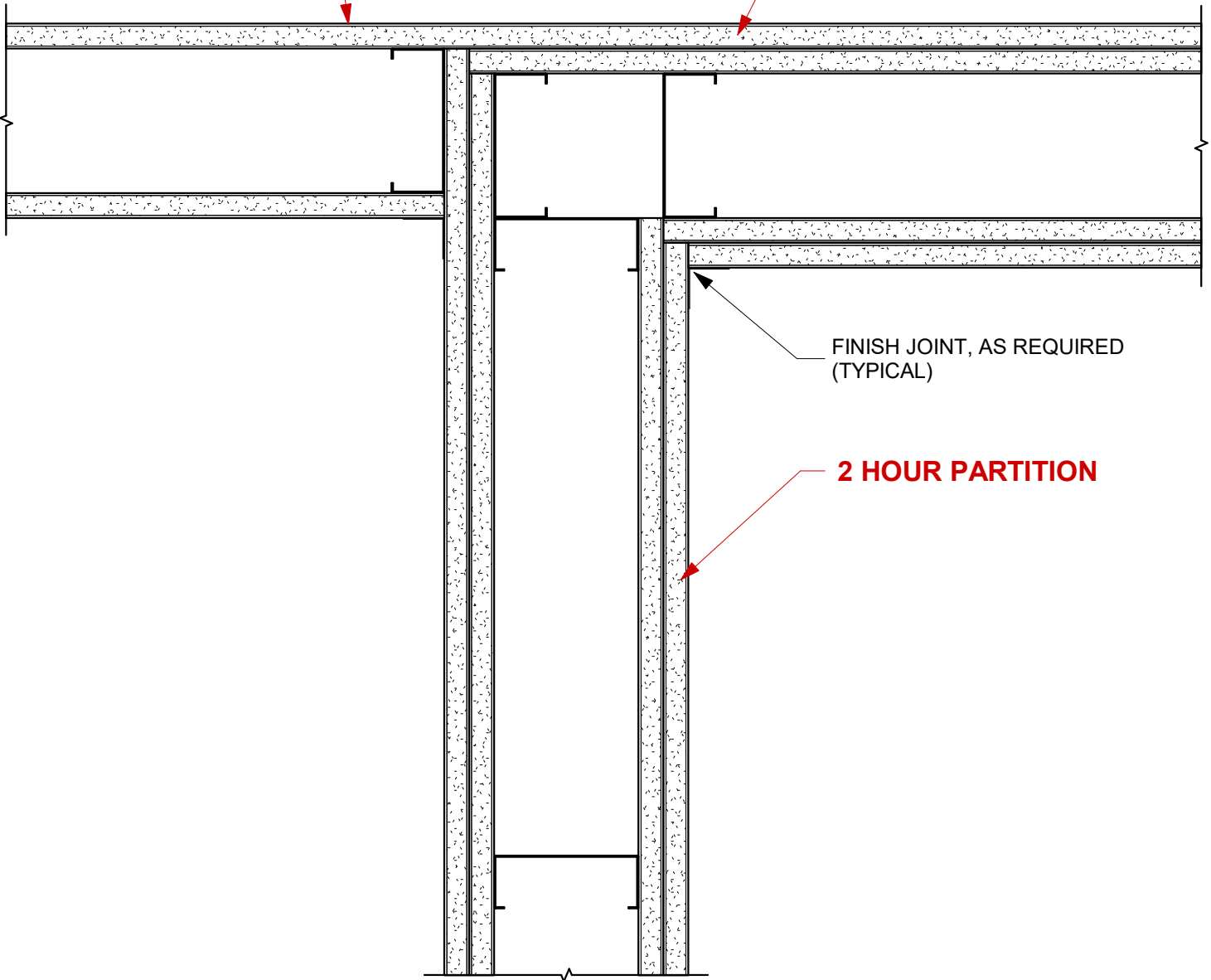
3 HOUR FIRE AND SMOKE BARRIER  
 3 HOUR FIRE BARRIER  
 2 HOUR FIRE AND SMOKE BARRIER  
 2 HOUR FIRE BARRIER  
 1 HOUR FIRE AND SMOKE BARRIER  
 1 HOUR FIRE BARRIER  
 SMOKE PARTITION / NON-RATED WALL

PRIORITY 1 (HIGHEST)  
 PRIORITY 2  
 PRIORITY 3  
 PRIORITY 4  
 PRIORITY 5  
 PRIORITY 6  
 PRIORITY 7 (LEAST)

NOTE: WALLS ARE LISTED IN DESCENDING PRIORITY (HIGHEST TO LEAST)

1 HOUR PARTITION

2 HOUR PARTITION



USG Corporation  
 550 West Adams Street, Chicago, IL 60661  
 T. 800-USG4YOU www.USG.com

## WALL PRIORITY DIAGRAM

GYPSUM ASSEMBLY DETAILS

ISSUE RECORD:  
 07/15/20

ISSUE: DATE:  
 1 01/12/21

SHEET INFORMATION:  
 WD-0003-A

WALL PRIORITY  
 DIAGRAM

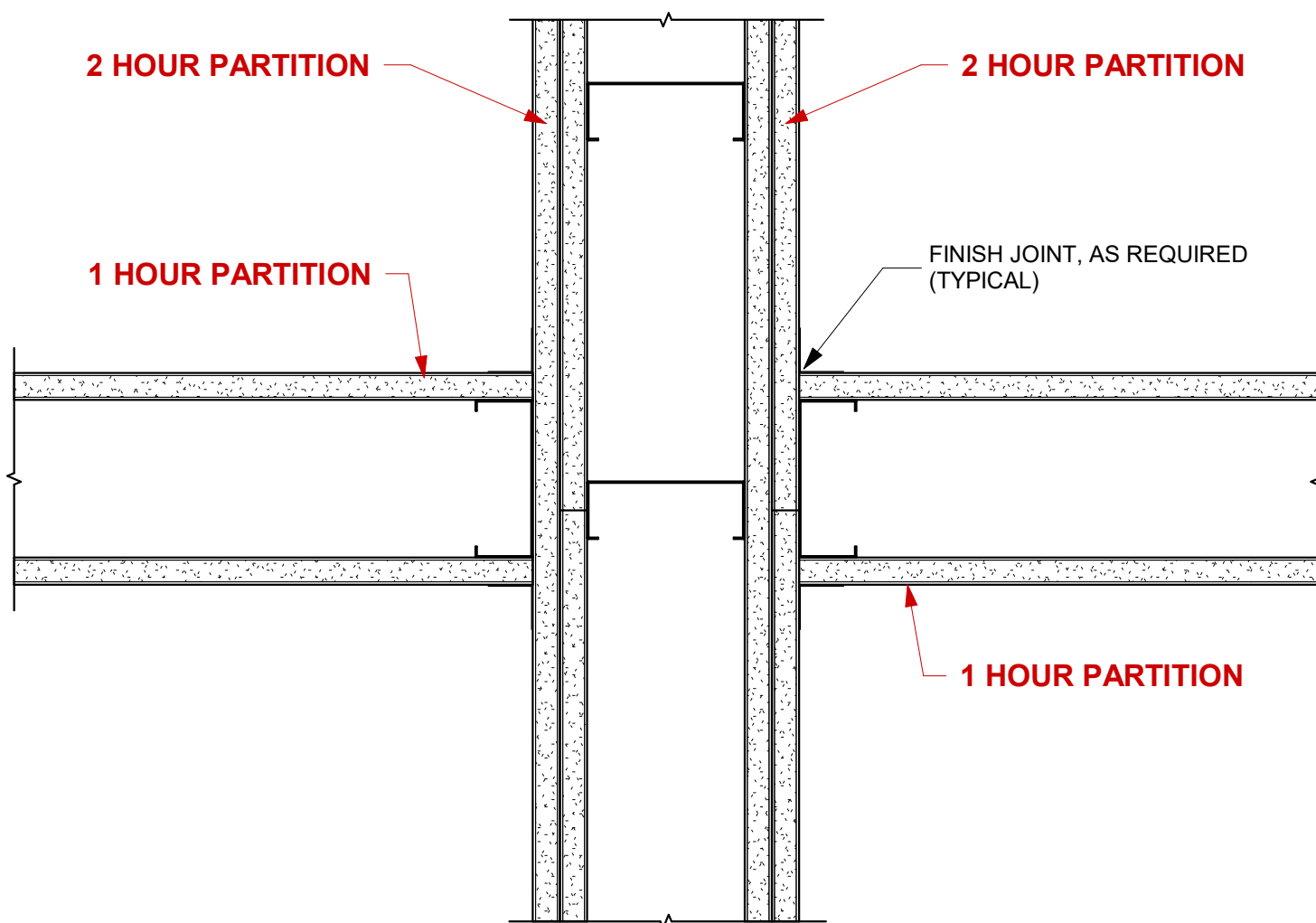
DISCLAIMER: THE USG PRODUCT DETAILS CONTAINED HEREIN ARE INTENDED FOR USE AS PRODUCT REFERENCE MATERIAL BY ARCHITECTS, ENGINEERS, OTHER DESIGN PROFESSIONALS, CONTRACTORS, BUILDING CODE OFFICIALS, OR OTHER COMPETENT CONSTRUCTION INDUSTRY TRADE PROFESSIONALS HAVING AN INTEREST IN THE SELECTION, SPECIFICATION AND USE OF PRODUCTS MANUFACTURED BY THE SUBSIDIARIES OF USG CORPORATION. THE DRAWINGS ARE INTENDED SOLELY AS TECHNICAL SUPPORT INCIDENT TO THE SALE AND USE OF USG PRODUCTS AND NOT INTENDED TO BE A SUBSTITUTE FOR THE DESIGN REVIEW AND APPROVAL OF THE LICENSED DESIGN PROFESSIONALS FOR THE PROJECT. THESE MATERIALS MAY BE PRINTED AND/OR TRANSFERRED ELECTRONICALLY SOLELY AS NEEDED BY THE USER, BECAUSE CAD/ELECTRONIC FILES AND BIM (BUILDING INFORMATION MODELING) FILES CAN BE MODIFIED BY OTHER PARTIES, WITHOUT NOTICE OR INDICATION OF SUCH MODIFICATIONS, MODIFICATION OF USG PRODUCT CAD AND BIM DRAWINGS IS THE SOLE RESPONSIBILITY OF THE DESIGN PROFESSIONAL. ©2021 USG CORPORATION

## WALL PRIORITY LEGEND

3 HOUR FIRE AND SMOKE BARRIER  
3 HOUR FIRE BARRIER  
2 HOUR FIRE AND SMOKE BARRIER  
2 HOUR FIRE BARRIER  
1 HOUR FIRE AND SMOKE BARRIER  
1 HOUR FIRE BARRIER  
SMOKE PARTITION / NON-RATED WALL

PRIORITY 1 (HIGHEST)  
PRIORITY 2  
PRIORITY 3  
PRIORITY 4  
PRIORITY 5  
PRIORITY 6  
PRIORITY 7 (LEAST)

NOTE: WALLS ARE LISTED IN DESCENDING PRIORITY (HIGHEST TO LEAST)



USG Corporation  
550 West Adams Street, Chicago, IL 60661  
T. 800-USG4YOU www.USG.com

## WALL PRIORITY DIAGRAM

GYPSUM ASSEMBLY DETAILS

ISSUE RECORD:  
07/15/20

ISSUE: DATE:  
1 01/12/21

SHEET INFORMATION:  
WD-0003-B

WALL PRIORITY  
DIAGRAM

DISCLAIMER: THE USG PRODUCT DETAILS CONTAINED HEREIN ARE INTENDED FOR USE AS PRODUCT REFERENCE MATERIAL BY ARCHITECTS, ENGINEERS, OTHER DESIGN PROFESSIONALS, CONTRACTORS, BUILDING CODE OFFICIALS, OR OTHER COMPETENT CONSTRUCTION INDUSTRY TRADE PROFESSIONALS HAVING AN INTEREST IN THE SELECTION, SPECIFICATION AND USE OF PRODUCTS MANUFACTURED BY THE SUBSIDIARIES OF USG CORPORATION. THE DRAWINGS ARE INTENDED SOLELY AS TECHNICAL SUPPORT INCIDENT TO THE SALE AND USE OF USG PRODUCTS AND NOT INTENDED TO BE A SUBSTITUTE FOR THE DESIGN REVIEW AND APPROVAL OF THE LICENSED DESIGN PROFESSIONALS FOR THE PROJECT. THESE MATERIALS MAY BE PRINTED AND/OR TRANSFERRED ELECTRONICALLY SOLELY AS NEEDED BY THE USER, BECAUSE CAD/ELECTRONIC FILES AND BIM (BUILDING INFORMATION MODELING) FILES CAN BE MODIFIED BY OTHER PARTIES, WITHOUT NOTICE OR INDICATION OF SUCH MODIFICATIONS, MODIFICATION OF USG PRODUCT CAD AND BIM DRAWINGS IS THE SOLE RESPONSIBILITY OF THE DESIGN PROFESSIONAL. ©2021 USG CORPORATION