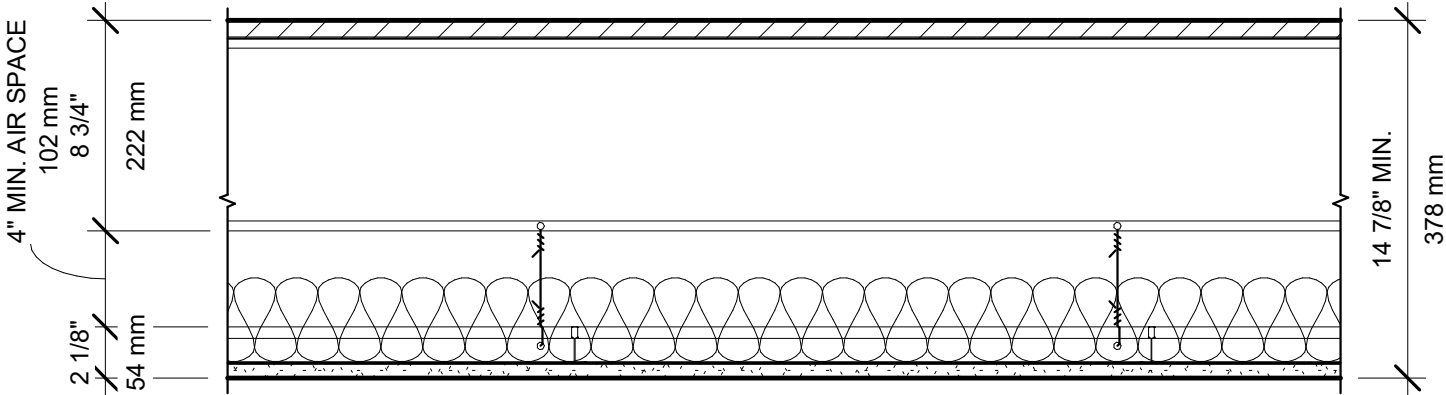


UL Design No. H505

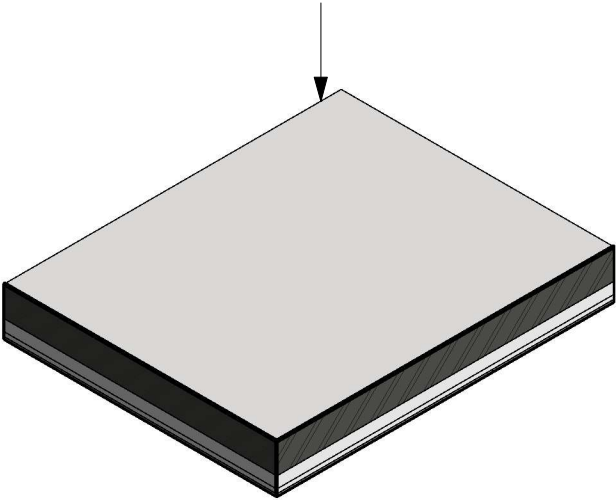
FIRE RATING: 2 HOUR
STC: N/A
SOUND TEST: N/A
SYSTEM THICKNESS: VARIES, 14 7/8" MIN.



ASSEMBLY OPTIONS:

- SUBFLOORING:** 3/4" USG STRUCTURAL PANEL CONCRETE SUBFLOOR (UL TYPE USGSP), WITH LONG DIMENSION OF PANELS PERPENDICULAR TO JOISTS
- STEEL JOISTS:** 8" DEEP, 16 GA., SPACED 24" MAX. O.C.
- CLIP ANGLES - (NOT SHOWN) :** ONE CLIP ANGLE PER JOIST END
- JOIST BRIDGING - (NOT SHOWN):** V-BRACING OF 1-1/2", 20 GA. GALVANIZED STEEL BETWEEN CHANNELS
- AIR SPACE:** 4" MIN. BETWEEN BOTTOM FLANGE OF JOIST AND MAIN RUNNERS
- BATTS AND BLANKETS:** 3-1/2" THICK GLASS FIBER INSULATION
- STEEL FRAMING MEMBERS:** SUSPENSION SYSTEM MAY BE USED IN LIEU OF THE RESILIENT CHANNELS. MAIN RUNNERS, CROSS TEES, CROSS CHANNELS AND WALL ANGLE AS LISTED BELOW (UL TYPE DGL):
- MAIN RUNNERS :** 4' O.C. MAIN RUNNERS SUSPENDED BY 12 GA. MIN. GALVANIZED. STEEL HANGER WIRE, 16" O.C.
 - CROSS TEES:** 16" O.C.
 - CROSS CHANNELS:** 16" O.C.
 - WALL ANGLE OR CHANNEL :** PAINTED OR GALVANIZED STEEL ANGLE TO SUPPORT STEEL FRAMING MEMBER ENDS AND FOR SCREW-ATTACHMENT OF THE GYPSUM PANEL (UL TYPE DGL)
- GYPSUM BOARD:** ONE LAYER 5/8" USG SHEETROCK® BRAND ECOSMART PANELS FIRECODE® X (UL TYPE ULIX™)

Revit Sytem Family
(Copy & Paste into your Revit Project)



REMARKS:

STUD AND INSULATION SIZES ARE MINIMUM UNLESS OTHERWISE STATED IN DESIGN.

FOR THE MOST UP-TO-DATE INFORMATION OR ASSEMBLY OPTIONS, REFER TO THE UL FIRE RESISTANCE DIRECTORY.

UL TYPE ULIX™ REQUIRES THE USE OF INSULATION FOR SINGLE-LAYER, STEEL-FRAMED UL FIRE-RATED ASSEMBLIES.