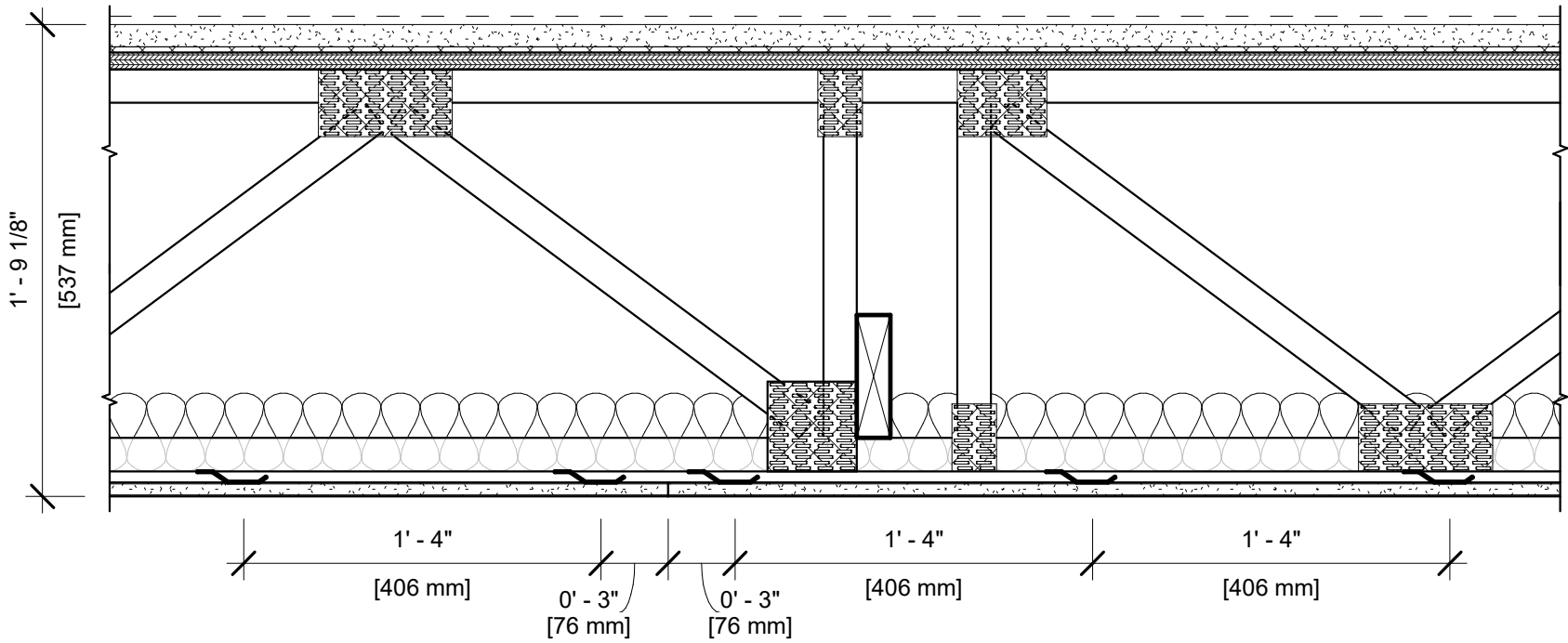


UL DESIGN NO. L521 System 4

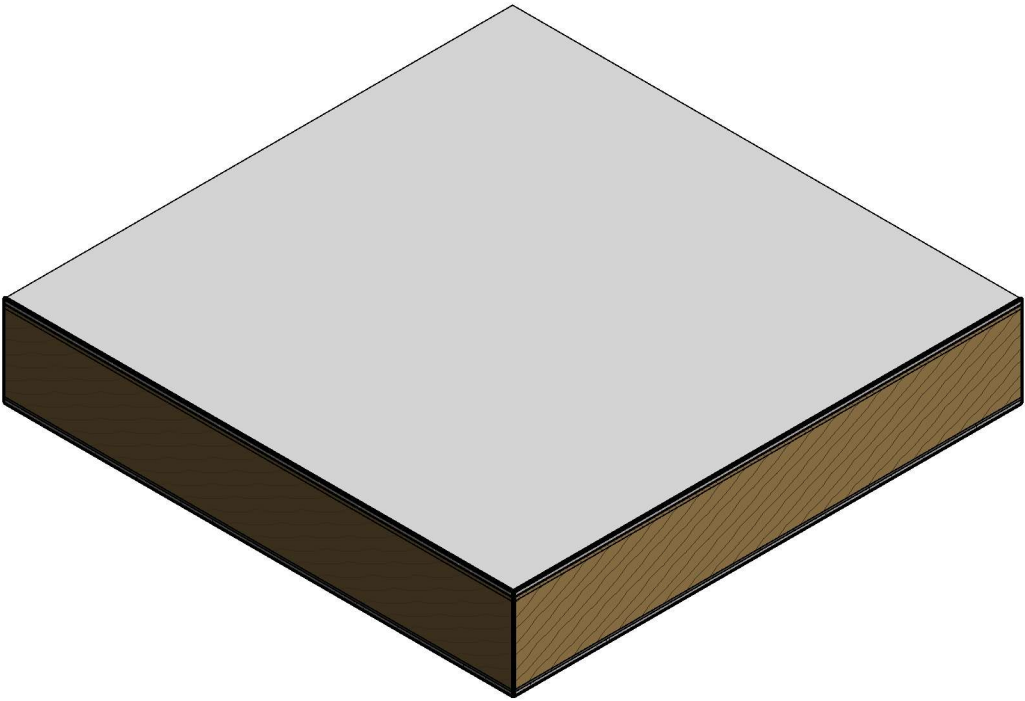
FIRE RATING:	1 HOUR	IIC:	50
STC:	58	IIC TEST:	G9877.02
SOUND TEST:	G9877.02		
SYSTEM THICKNESS:	21 1/8"		



ASSEMBLY

FINISH FLOORING:	LUXURY VINYL TILE (BY OTHERS)
FLOOR TOPPING MIXTURE:	1" THICK USG LEVELROCK® BRAND 2500 SERIES FLOOR UNDERLAYMENT
FLOOR MAT MATERIALS:	1/4" USG LEVELROCK® BRAND SAM-N25™ SOUND ATTENUATION MAT
SUBFLOORING:	23/32" PLYWOOD PANEL
TRUSSES:	18" PARALLEL CHORD OPEN WEB WOOD TRUSSES, SPACED 24" O.C.
CAVITY INSULATION:	3-1/2" UNFACED GLASS FIBER
RESILIENT CHANNELS:	25 GA. RESILIENT CHANNELS SPACED 16" O.C. (SOUND TESTED WITH RC DELUXE®)
GYPSUM BOARD:	ONE LAYER 5/8" USG SHEETROCK® BRAND ECOSMART PANELS FIRECODE® X (UL TYPE ULIX™)

Revit Sytem Family
(Copy & Paste into your Revit Project)



NOTES:

FOR THE MOST UP-TO-DATE INFORMATION OR ASSEMBLY OPTIONS, REFER TO THE UL FIRE RESISTANCE DIRECTORY.

REFER TO THE UL FIRE RESISTANCE DIRECTORY FOR INFORMATION REGARDING PRODUCT ORIENTATION AND FASTENING REQUIREMENTS.