

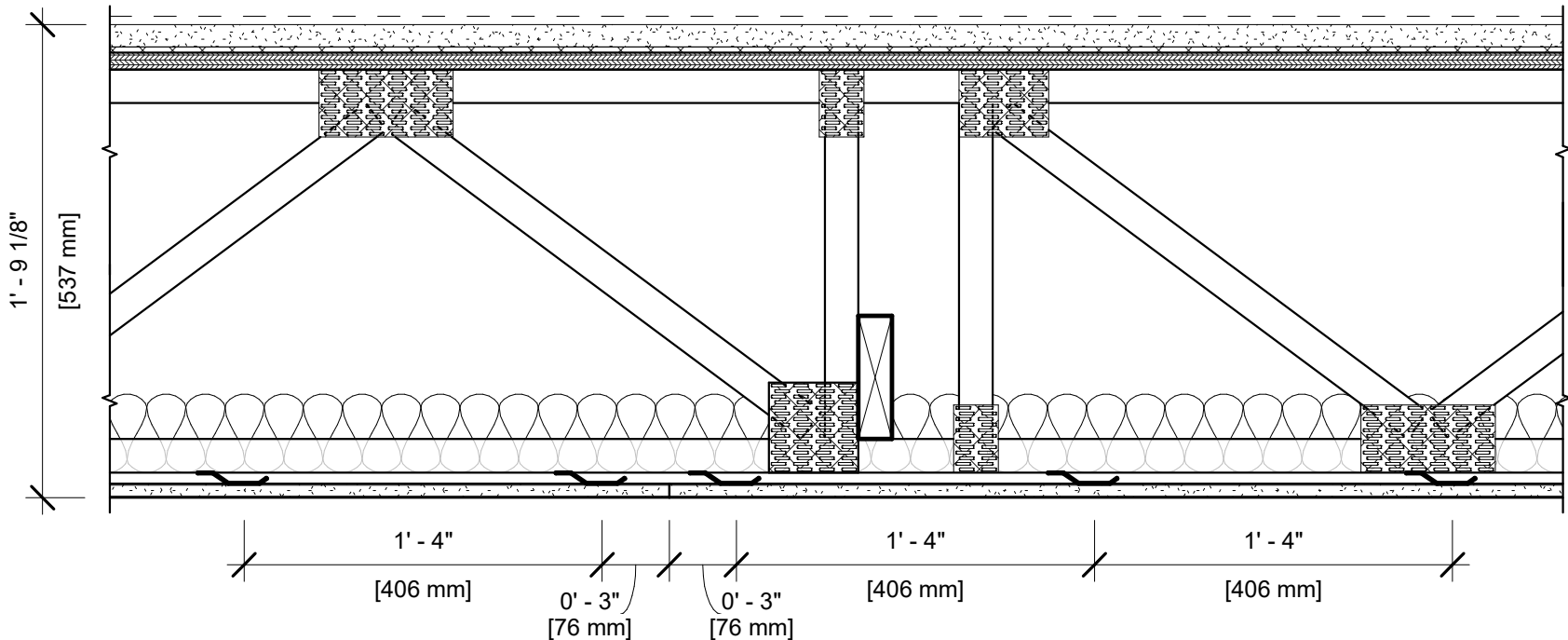
UL DESIGN NO. L521 System 4

FIRE RATING:
STC:
SOUND TEST:
SYSTEM THICKNESS:

1 HOUR
58
G9877.01
21 1/8"

IIC:
IIC TEST:

50
G9877.01



ASSEMBLY

- FINISH FLOORING:

BARE FLOOR
- FLOOR TOPPING MIXTURE:

1" USG LEVELROCK® BRAND 2500 SERIES FLOOR UNDERLAYMENT
- FLOOR MAT MATERIALS:

1/4" USG LEVELROCK® BRAND SAM-N25™ SOUND ATTENUATION MAT
- SUBFLOORING:

23/32" PLYWOOD PANEL
- TRUSSES:

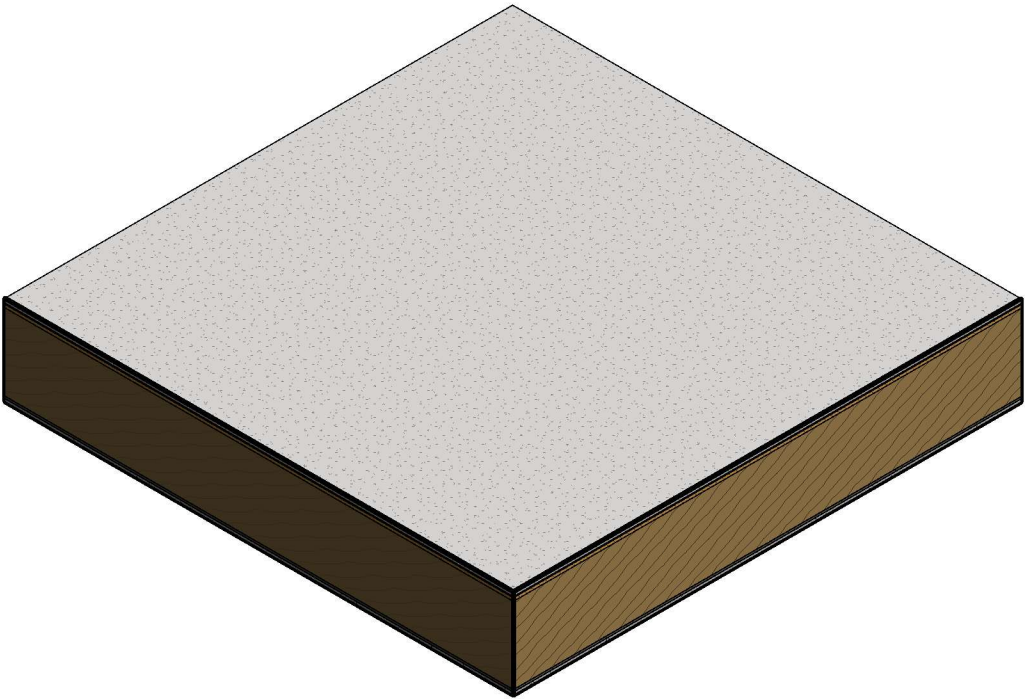
18" PARALLEL CHORD OPEN WEB WOOD TRUSSES, SPACED 24" O.C.
- CAVITY INSULATION:

3-1/2" UNFACED GLASS FIBER
- RESILIENT CHANNELS:

25 GA. RESILIENT CHANNELS SPACED 16" O.C. (SOUND TESTED WITH RC DELUXE®)
- GYPSUM BOARD:

ONE LAYER 5/8" USG SHEETROCK® BRAND ECOSMART PANELS FIRECODE® X (UL TYPE ULIX®)

Revit Sytem Family
(Copy & Paste into your Revit Project)



NOTES:

FOR THE MOST UP-TO-DATE INFORMATION OR ASSEMBLY OPTIONS, REFER TO THE UL FIRE RESISTANCE DIRECTORY.

REFER TO THE UL FIRE RESISTANCE DIRECTORY FOR INFORMATION REGARDING PRODUCT ORIENTATION AND FASTENING REQUIREMENTS.