

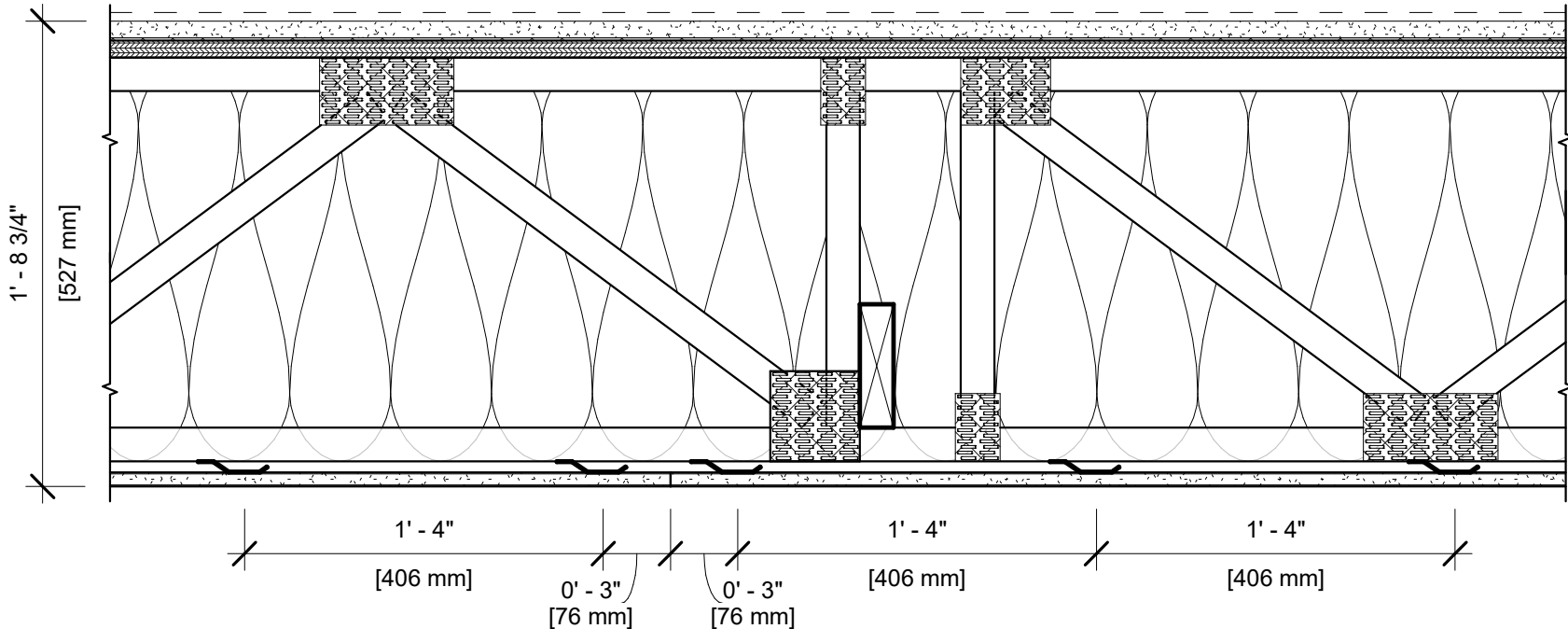
UL DESIGN NO. L521 System 4

FIRE RATING:  
STC:  
SOUND TEST:  
SYSTEM THICKNESS:

1 HOUR  
61  
H5048.09  
20 3/4"

IIC:  
IIC TEST:

54  
H5048.09



ASSEMBLY

- FINISH FLOORING:

LUXURY VINYL TILE (BY OTHERS)
- FLOOR TOPPING MIXTURE:

3/4" USG LEVELROCK® BRAND 2500 SERIES UNDERLAYMENT
- FLOOR MAT MATERIALS:

1/8" USG LEVELROCK® BRAND SAM-N12™ SOUND ATTENUATION MAT
- SUBFLOORING:

23/32" PLYWOOD PANEL
- TRUSSES:

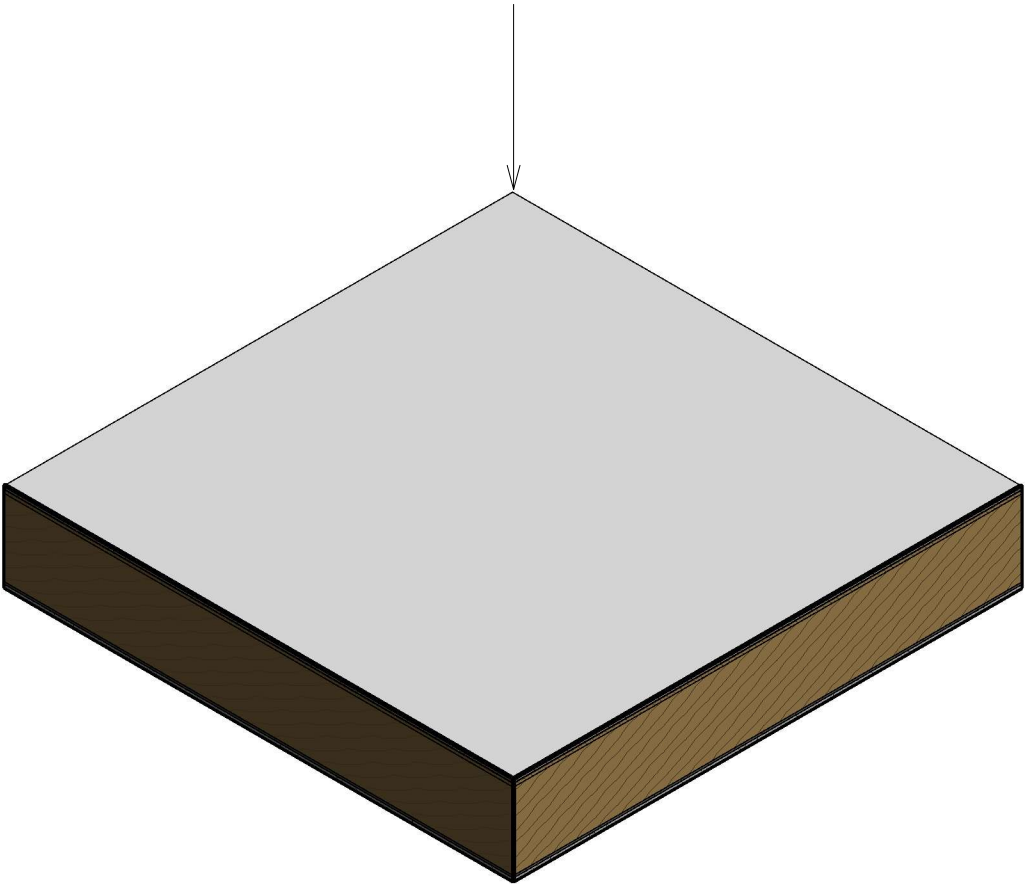
18" PARALLEL CHORD OPEN WEB WOOD TRUSSES, SPACED 24" O.C.
- CAVITY INSULATION:

18" BLOWN-IN GLASS FIBER INSULATION
- RESILIENT CHANNELS:

25 GA. RESILIENT CHANNELS SPACED 16" O.C. (SOUND TESTED WITH RC DELUXE®)
- GYPSUM BOARD:

ONE LAYER 5/8" USG SHEETROCK® BRAND ECOSMART PANELS FIRECODE® X (UL TYPE ULIX™)

Revit Sytem Family  
(Copy & Paste into your Revit Project)



NOTES:

FOR THE MOST UP-TO-DATE INFORMATION OR ASSEMBLY OPTIONS, REFER TO THE UL FIRE RESISTANCE DIRECTORY.

REFER TO THE UL FIRE RESISTANCE DIRECTORY FOR INFORMATION REGARDING PRODUCT ORIENTATION AND FASTENING REQUIREMENTS.