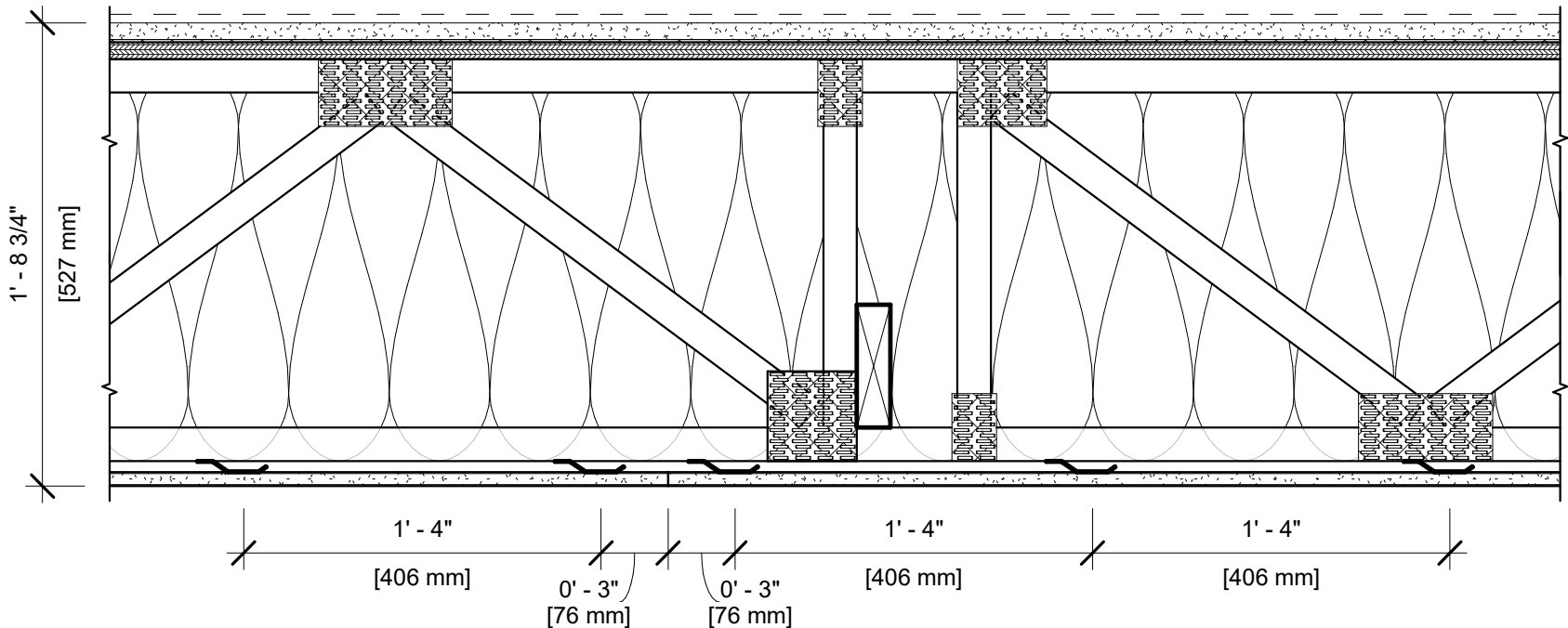


UL DESIGN NO. L521 System 4

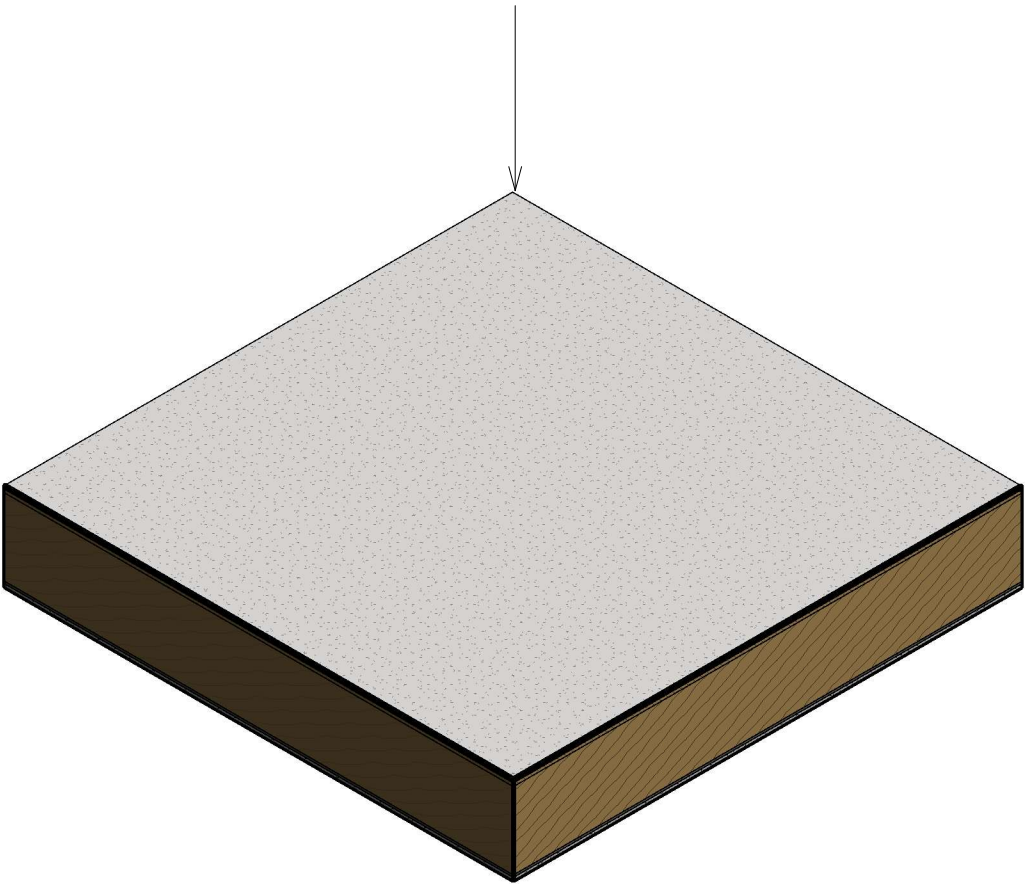
FIRE RATING:	1 HOUR	IIC:	50
STC:	60	IIC TEST:	H5048.08
SOUND TEST:	H5048.08		
SYSTEM THICKNESS:	20 3/4"		



ASSEMBLY

FINISH FLOORING:	BARE FLOOR
FLOOR TOPPING MIXTURE:	3/4" USG LEVELROCK® BRAND 2500 SERIES UNDERLAYMENT
FLOOR MAT MATERIALS:	1/8" USG LEVELROCK® BRAND SAM-N12™ SOUND ATTENUATION MAT
SUBFLOORING:	23/32" PLYWOOD PANEL
TRUSSES:	18" PARALLEL CHORD OPEN WEB WOOD TRUSSES, SPACED 24" O.C.
CAVITY INSULATION:	18" BLOWN-IN GLASS FIBER INSULATION
RESILIENT CHANNELS:	25 GA. RESILIENT CHANNELS SPACED 16" O.C. (SOUND TESTED WITH RC DELUXE®)
GYPSUM BOARD:	ONE LAYER 5/8" USG SHEETROCK® BRAND ECOSMART PANELS FIRECODE® X (UL TYPE ULIX™)

Revit Sytem Family
(Copy & Paste into your Revit Project)



NOTES:

FOR THE MOST UP-TO-DATE INFORMATION OR ASSEMBLY OPTIONS, REFER TO THE UL FIRE RESISTANCE DIRECTORY.

REFER TO THE UL FIRE RESISTANCE DIRECTORY FOR INFORMATION REGARDING PRODUCT ORIENTATION AND FASTENING REQUIREMENTS.