

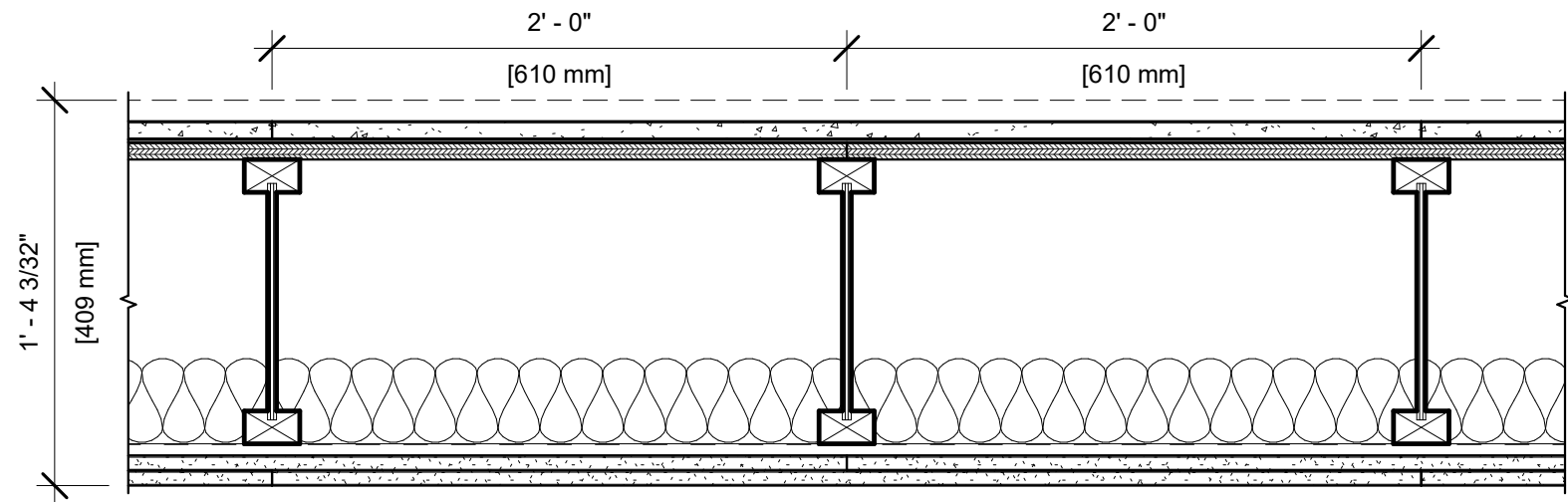
UL DESIGN NO. L570 2

FIRE RATING:
STC:
SOUND TEST:
SYSTEM THICKNESS:

1 HOUR
59
H5048.07
1' 4 3/32"

IIC:
SOUND TEST:

56
H5048.07



ASSEMBLY OPTIONS:

- FINISH FLOORING:

LAMINATE (BY OTHERS)
- FLOOR TOPPING MIXTURE:

3/4" USG LEVELROCK® BRAND 2500 SERIES UNDERLAYMENT
- FLOOR MAT:

1/8" USG LEVELROCK® BRAND SAM-N12™ SOUND ATTENUATION MAT
- SUBFLOORING:

23/32" PLYWOOD PANEL
- STRUCTURAL WOOD MEMBERS:

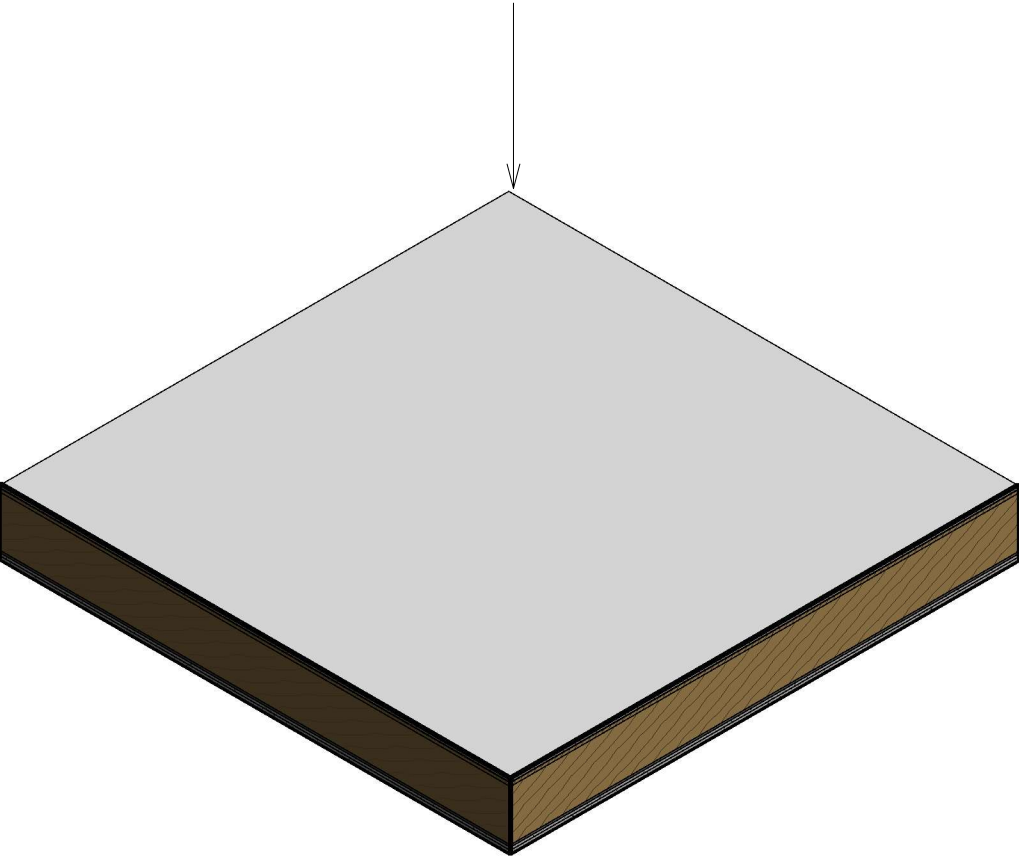
11-7/8" WOOD I-JOISTS, SPACED 24" O.C.
- INSULATION:

3-1/2" UNFACED GLASS FIBER
- RESILIENT CHANNELS:

25 GA. RESILIENT CHANNELS SPACED 16" O.C. (SOUND TESTED WITH RC DELUXE®)
- GYPSUM BOARD:

TWO LAYERS 5/8" USG SHEETROCK® BRAND ECOSMART PANELS FIRECODE® X (UL TYPE ULIX™)

Revit Sytem Family
(Copy & Paste into your Revit Project)



NOTES:

FOR THE MOST UP-TO-DATE INFORMATION OR ASSEMBLY OPTIONS, REFER TO THE UL FIRE RESISTANCE DIRECTORY.

REFER TO THE UL FIRE RESISTANCE DIRECTORY FOR INFORMATION REGARDING PRODUCT ORIENTATION AND FASTENING REQUIREMENTS.