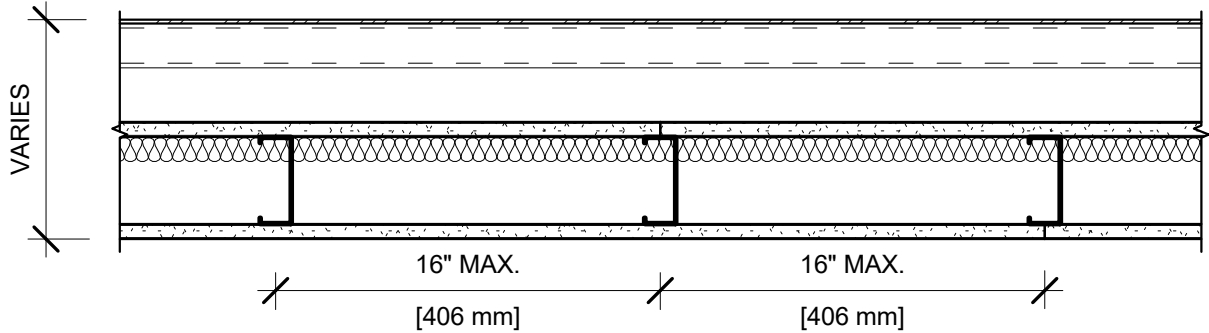


UL Design No. EWS0009

ASTM E331:	2 HR. @ 300 Pa (6.27 PSF)
ASTM E2357:	0.029 CFM/FT² (0.015 L/S•M²) @ 75 Pa (1.57 PSF) - CATEGORY 1
STC:	N/A
SOUND TEST:	N/A
SYSTEM THICKNESS:	VARIES



ASSEMBLY OPTIONS:

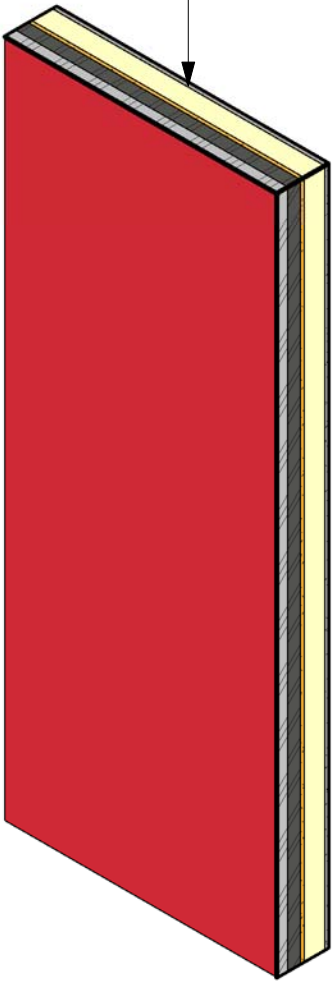
EXTERIOR PANELS:	ALUMINUM COMPOSITE MATERIAL PANEL SYSTEM
MOUNTING SYSTEM:	EXTRUDED ALUMINUM MOUNTING SYSTEM SECURED TO FURRING CHANNELS, SPACED 16" O.C. MAX. BACKER EXTRUSIONS INSTALLED VERTICALLY AT LOCATIONS CORRESPONDING TO VERTICAL EDGES OF EXTERIOR PANELS
FURRING CHANNEL (NOT SHOWN):	1-1/4" WIDE BY 2-1/4" DEEP, 16 GA., HAT SHAPED. INSTALLED HORIZONTALLY AT THE TOP AND BOTTOM OF EACH EXTERIOR PANEL
SEALANT (NOT SHOWN):	SEALANT APPLIED TO ALL EXTERIOR SHEATHING JOINTS AND SCREW HEADS (TREM FLEX 834 OR DYMONIC 100)
EXTERIOR GYPSUM SHEATHING (FWFX):	(1) LAYER 5/8" THICK EXTERIOR-GRADE GLASS MAT SHEATHING GYPSUM BOARD WITH AIR BARRIER SEALANT FACTORY APPLIED, JOINTS ORIENTED VERTICALLY OR HORIZONTALLY (UL TYPES USGX, SECUROCK EXOAIR 430 PANEL)
STEEL STUDS:	3-5/8" DEEP, 16 GA. SPACED 16" O.C. MAX.
BATT INSULATION:	1" THICK MINERAL WOOL INSTALLED WITHIN EACH WALL STUD CAVITY AT EACH FLOOR LINE, HELD IN PLACE WITH Z CLIPS SPACED MAX 24" O.C.

INTERIOR GYPSUM BOARD (CKNX):	(1) LAYER 5/8" THICK GYPSUM BOARD, JOINTS ORIENTED VERTICALLY OR HORIZONTALLY (UL TYPE SCX)
-------------------------------	---

AT WINDOW OPENINGS
(NOT SHOWN ON DETAIL):

STEEL FLASHING:	MIN. 24 GA. STEEL FORMED TO COMPLETELY LINE WINDOW OPENING AND OVERLAP ONTO BOTH SURFACES OF WALL ASSEMBLY 1/2" MIN.
SEALANT:	SEALANT APPLIED TO ALL EDGES OF WINDOW FLASHING MATERIAL TO ADHERE FLASHING TO GYPSUM SHEATHING AND USED TO ATTACH STIFFENERS TO BACK OF EXTERIOR PANELS (TREMCO — SPECTREM 1)
WINDOW FLASHING (OPTIONAL):	NOM. 6" WIDE EXTRUDED SILICONE RUBBER FLASHING ATTACHED TO GYPSUM SHEATHING WITH SEALANT (LISTED ABOVE) TO COMPLETELY FRAME WINDOW OPENING (TREMCO — PROGLAZE ETA)

REVIT SYSTEM FAMILY
(COPY & PASTE INTO YOUR REVIT PROJECT)



REMARKS:

1. STUD SIZE IS MINIMUM UNLESS OTHERWISE STATED IN DESIGN.
2. FOR THE MOST UP-TO-DATE INFORMATION OR ASSEMBLY OPTIONS, REFER TO THE UL FIRE RESISTANCE DIRECTORY.
3. VISIT WWW.USG.COM FOR THE MOST UP-TO-DATE PRODUCT INFORMATION AND INSTALLATION INSTRUCTIONS.
4. WALL THICKNESSES ARE INDICATED PER UL TEST ONLY.
5. REFERENCE IBC AND LOCAL BUILDING CODES FOR MINIMUM STUD DEPTH AND INSULATION VALUES FOR EXTERIOR ASSEMBLIES.

USG

CGC

TREMCO

PERFORMANCE BUILT IN

USG Corporation

550 West Adams Street

Chicago, IL 60661 USA

www.usg.com

800.USG4YOU (847-4968)

Tremco Commercial Sealants & Waterproofing

3735 Green Road

Beechwood, OH 44122

Tremco Technical Support:

866.209.2404

DISCLAIMER:
THE USG AND TREMCO PRODUCT INFORMATION CONTAINED HEREIN IS INTENDED FOR USE AS PRODUCT REFERENCE MATERIAL BY ARCHITECTS, ENGINEERS, AND OTHER DESIGN PROFESSIONALS, CONTRACTORS, BUILDING CODE OFFICIALS, OR OTHER COMPETENT CONSTRUCTION INDUSTRY TRADE PROFESSIONALS HAVING AN INTEREST IN THE SELECTION, SPECIFICATION, AND USE OF PRODUCTS MANUFACTURED BY THE SUBSIDIARIES OF USG CORPORATION AND TREMCO. THESE ASSETS ARE INTENDED SOLELY AS TECHNICAL SUPPORT INCIDENT TO THE SALE AND USE OF USG AND TREMCO PRODUCTS, AND NOT INTENDED TO BE A SUBSTITUTE FOR THE DESIGN REVIEW AND APPROVAL OF THE LICENSED DESIGN PROFESSIONALS FOR THE PROJECT. THESE MATERIALS MAY BE PRINTED AND/OR TRANSFERRED ELECTRONICALLY SOLELY AS NEEDED BY THE USER. BECAUSE CAD ELECTRONIC FILES AND BIM (BUILDING INFORMATION MODELING) FILES CAN BE MODIFIED BY OTHER PARTIES, WITHOUT NOTICE OR INDICATION OF SUCH MODIFICATIONS, MODIFICATION OF USG AND TREMCO PRODUCT CAD AND BIM FILES IS THE SOLE RESPONSIBILITY OF THE DESIGN PROFESSIONAL.

UL FWFO.EWS0009

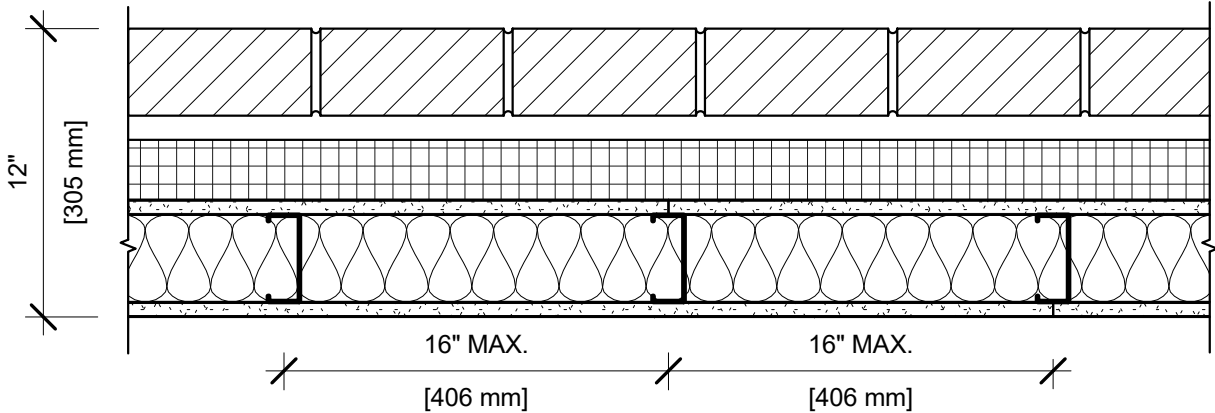
ISSUE RECORD:	
Revision	Date
2	06-04-2019

SHEET INFORMATION:

EWS0009

UL Design No. EWS0016

ASTM E331:	2 HR. @ 300 Pa (6.27 PSF)
ASTM E2357:	0.029 CFM/FT² (0.015 L/S•M²) @ 75 Pa (1.57 PSF) - CATEGORY 1
STC:	N/A
SOUND TEST:	N/A
SYSTEM THICKNESS:	12"



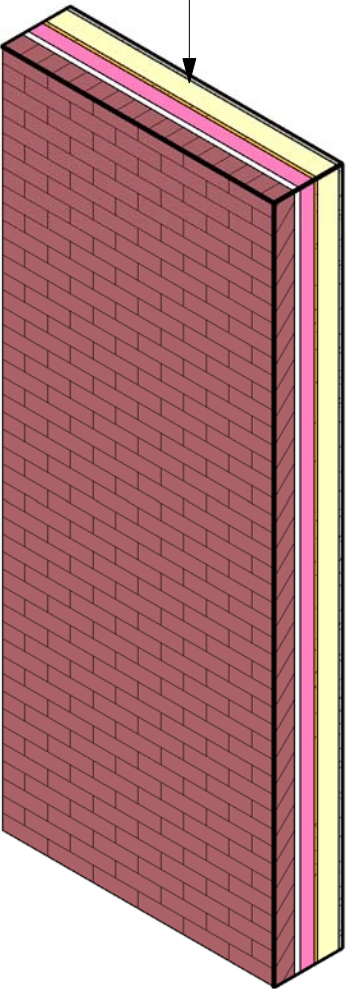
ASSEMBLY OPTIONS:

EXTERIOR BRICK VENEER:	4" NOM. CLAY BRICK, WITH STANDARD ANCHORS SPACED 24" O.C. MAX.
AIR CAVITY:	1" NOM. AIR GAP
FOAM INSULATION:	MAX. 2-1/2" THICK, EXTRUDED POLYSTYRENE INSULATION
BATT INSULATION:	MIN. 4" THICK WITHIN STUD CAVITY AT EACH FLOOR LINE WITH ANY STANDARD INSTALLATION METHOD
SEALANT (<i>NOT SHOWN</i>):	SEALANT APPLIED TO ALL EXTERIOR SHEATHING JOINTS AND SCREW HEADS (<i>TREMFLEX 834 OR DYMONIC 100</i>)
EXTERIOR GYPSUM SHEATHING (FWFX):	(1) LAYER 5/8" THICK EXTERIOR-GRADE GLASS MAT SHEATHING GYPSUM BOARD WITH AIR BARRIER SEALANT FACTORY APPLIED, JOINTS ORIENTED VERTICALLY OR HORIZONTALLY (<i>UL TYPES USGX, SECUROCK EXOAIR 430 PANEL</i>)
STEEL STUDS:	3-5/8" DEEP, 16 GA. SPACED 16" O.C. MAX.
INTERIOR GYPSUM BOARD (BWFR):	(1) LAYER 5/8" THICK GYPSUM BOARD, JOINTS ORIENTED VERTICALLY (<i>UL TYPE SCX</i>)

AT WINDOW OPENINGS
(NOT SHOWN ON
DETAIL):

STEEL LINTEL:	7" x 3/8" MIN. LINTEL TO EXTEND MIN. 8" BEYOND EACH SIDE OF THE WINDOW OPENING
BATT INSULATION:	1" THICK MINERAL WOOL AT UNDERSIDE OF LINTEL
STEEL FLASHING:	MIN. 22 GA. STEEL FORMED TO COMPLETELY LINE WINDOW OPENING AND OVERLAP ONTO BOTH SURFACES OF WALL ASSEMBLY 1/2" MIN.
SEALANT:	SEALANT APPLIED TO ALL EDGES OF WINDOW FLASHING MATERIAL TO ADHERE FLASHING TO GYPSUM SHEATHING (<i>TREMCO — SPECTREM 1</i>)
WINDOW FLASHING (<i>OPTIONAL</i>):	NOM. 6" WIDE EXTRUDED SILICONE RUBBER FLASHING ATTACHED TO GYPSUM SHEATHING WITH SEALANT (LISTED ABOVE) TO COMPLETELY FRAME WINDOW OPENING (<i>TREMCO — PROGLAZE ETA</i>)

REVIT SYSTEM FAMILY
(COPY & PASTE INTO YOUR REVIT PROJECT)



REMARKS:

1.
- STUD SIZE IS MINIMUM UNLESS OTHERWISE STATED IN DESIGN.
2.
- FOR THE MOST UP-TO-DATE INFORMATION OR ASSEMBLY OPTIONS, REFER TO THE UL FIRE RESISTANCE DIRECTORY.
3.
- VISIT WWW.USG.COM FOR THE MOST UP-TO-DATE PRODUCT INFORMATION AND INSTALLATION INSTRUCTIONS.
4.
- WALL THICKNESSES ARE INDICATED PER UL TEST ONLY.
5.
- REFERENCE IBC AND LOCAL BUILDING CODES FOR MINIMUM STUD DEPTH AND INSULATION VALUES FOR EXTERIOR ASSEMBLIES.

USG

CGC

TREMCO

PERFORMANCE BUILT IN

USG Corporation

550 West Adams Street

Chicago, IL 60661 USA

www.usg.com

800.USG4YOU (847-4968)

Tremco Commercial Sealants & Waterproofing

3735 Green Road

Beechwood, OH 44122

Tremco Technical Support:

866.209.2404

DISCLAIMER:
THE USG AND TREMCO PRODUCT INFORMATION CONTAINED HEREIN IS INTENDED FOR USE AS PRODUCT REFERENCE MATERIAL BY ARCHITECTS, ENGINEERS, AND OTHER DESIGN PROFESSIONALS, CONTRACTORS, BUILDING CODE OFFICIALS, OR OTHER COMPETENT CONSTRUCTION INDUSTRY TRADE PROFESSIONALS HAVING AN INTEREST IN THE SELECTION, SPECIFICATION, AND USE OF PRODUCTS MANUFACTURED BY THE SUBSIDIARIES OF USG CORPORATION AND TREMCO. THESE ASSETS ARE INTENDED SOLELY AS TECHNICAL SUPPORT INCIDENT TO THE SALE AND USE OF USG AND TREMCO PRODUCTS, AND NOT INTENDED TO BE A SUBSTITUTE FOR THE DESIGN REVIEW AND APPROVAL OF THE LICENSED DESIGN PROFESSIONALS FOR THE PROJECT. THESE MATERIALS MAY BE PRINTED AND/OR TRANSFERRED ELECTRONICALLY SOLELY AS NEEDED BY THE USER. BECAUSE CAD ELECTRONIC FILES AND BIM (BUILDING INFORMATION MODELING) FILES CAN BE MODIFIED BY OTHER PARTIES, WITHOUT NOTICE OR INDICATION OF SUCH MODIFICATIONS, MODIFICATION OF USG AND TREMCO PRODUCT CAD AND BIM FILES IS THE SOLE RESPONSIBILITY OF THE DESIGN PROFESSIONAL.

ISSUE RECORD:

Revision	Date
2	06-04-2019

SHEET INFORMATION:

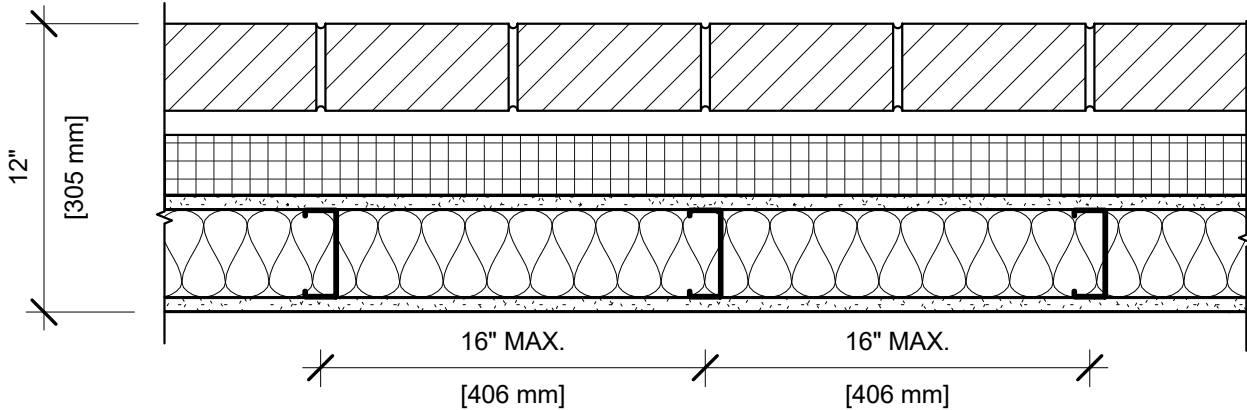
EWS0016

UL FWFO.EWS0016

UL Design No. EWS0017

ASTM E331:
ASTM E2357:
STC:
SOUND TEST:
SYSTEM THICKNESS:

2 HR. @ 300 Pa (6.27 PSF)
0.029 CFM/FT² (0.015 L/S•M²) @ 75 Pa (1.57 PSF) - CATEGORY 1
N/A
N/A
12"



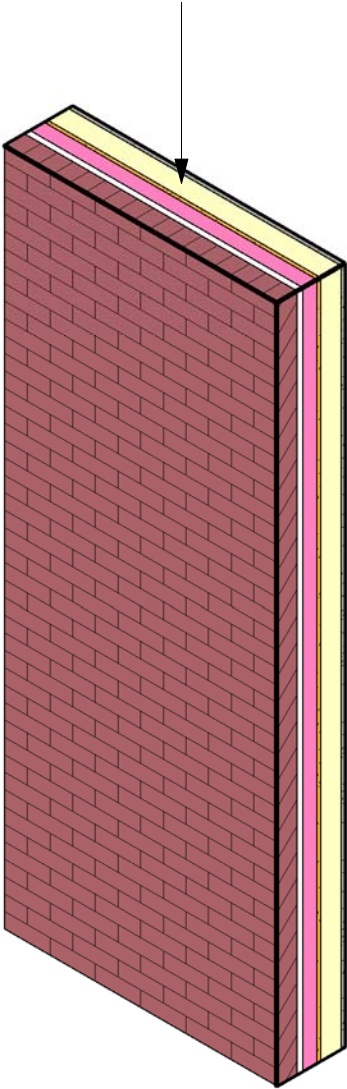
ASSEMBLY OPTIONS:

- EXTERIOR BRICK VENEER:
- 4" NOM. CLAY BRICK, WITH STANDARD ANCHORS
- AIR CAVITY:
- 1" NOM. AIR GAP
- FOAM INSULATION:
- MAX. 2-1/2" THICK, EXTRUDED POLYSTYRENE INSULATION
- SEALANT (*NOT SHOWN*):
- SEALANT APPLIED TO ALL EXTERIOR SHEATHING JOINTS AND SCREW HEADS (*TREMFLEX 834 OR DYMONIC 100*)
- EXTERIOR GYPSUM SHEATHING (FWFX):
- (1) LAYER 5/8" THICK EXTERIOR-GRADE GLASS MAT SHEATHING GYPSUM BOARD WITH AIR BARRIER SEALANT FACTORY APPLIED, JOINTS ORIENTED VERTICALLY OR HORIZONTALLY (*UL TYPES USGX, SECUROCK EXOAIR 430 PANEL*)
- BATT INSULATION:
- MIN. 4" THICK WITHIN STUD CAVITY AT EACH FLOOR LINE WITH ANY STANDARD INSTALLATION METHOD
- STEEL STUDS:
- 3-5/8" DEEP, 16 GA. SPACED 16" O.C. MAX.
- INTERIOR GYPSUM BOARD (BWFR):
- (1) LAYER 5/8" THICK GYPSUM BOARD, JOINTS ORIENTED VERTICALLY (*UL TYPE SCX*)

AT WINDOW OPENINGS
(NOT SHOWN ON
DETAIL):

- STEEL LINTEL:
- 7" x 3/8" MIN. LINTEL TO EXTEND MIN. 8" BEYOND EACH SIDE OF THE WINDOW OPENING
- BATT INSULATION:
- 1" THICK MINERAL WOOL AT UNDERSIDE OF LINTEL
- BATT INSULATION:
- MIN. 4 PCF MINERAL WOOL, COMPRESSED 50%, INSTALLED INTO THE CAVITY SPACE BETWEEN THE FOAM INSULATION AND THE BRICK VENEER, MIN. 4" THICK, AT THE BOTTOM AND BOTH SIDES OF THE WINDOW OPENING
- ALUMINUM FLASHING:
- .040" ALUMINUM, 1/2" OVERLAP, FORMED TO COMPLETELY LINE WINDOW OPENING
- SEALANT:
- SEALANT APPLIED TO ALL EDGES OF WINDOW FLASHING MATERIAL TO ADHERE FLASHING TO GYPSUM SHEATHING (*TREMCO — SPECTREM 1*)
- WINDOW FLASHING (*OPTIONAL*):
- NOM. 6" WIDE EXTRUDED SILICONE RUBBER FLASHING ATTACHED TO GYPSUM SHEATHING WITH SEALANT (LISTED ABOVE) TO COMPLETELY FRAME WINDOW OPENING (*TREMCO — PROGLAZE ETA*)

REVIT SYSTEM FAMILY
(COPY & PASTE INTO YOUR REVIT PROJECT)



REMARKS:

1.
- STUD SIZE IS MINIMUM UNLESS OTHERWISE STATED IN DESIGN.
2.
- FOR THE MOST UP-TO-DATE INFORMATION OR ASSEMBLY OPTIONS, REFER TO THE UL FIRE RESISTANCE DIRECTORY.
3.
- VISIT WWW.USG.COM FOR THE MOST UP-TO-DATE PRODUCT INFORMATION AND INSTALLATION INSTRUCTIONS.
4.
- WALL THICKNESSES ARE INDICATED PER UL TEST ONLY.
5.
- REFERENCE IBC AND LOCAL BUILDING CODES FOR MINIMUM STUD DEPTH AND INSULATION VALUES FOR EXTERIOR ASSEMBLIES.

USG

CGC

TREMCO

PERFORMANCE BUILT IN

USG Corporation

550 West Adams Street

Chicago, IL 60661 USA

www.usg.com

800.USG4YOU (847-4968)

Tremco Commercial Sealants & Waterproofing

3735 Green Road

Beechwood, OH 44122

Tremco Technical Support:

866.209.2404

DISCLAIMER:
THE USG AND TREMCO PRODUCT INFORMATION CONTAINED HEREIN IS INTENDED FOR USE AS PRODUCT REFERENCE MATERIAL BY ARCHITECTS, ENGINEERS, AND OTHER DESIGN PROFESSIONALS, CONTRACTORS, BUILDING CODE OFFICIALS, OR OTHER COMPETENT CONSTRUCTION INDUSTRY TRADE PROFESSIONALS HAVING AN INTEREST IN THE SELECTION, SPECIFICATION, AND USE OF PRODUCTS MANUFACTURED BY THE SUBSIDIARIES OF USG CORPORATION AND TREMCO. THESE ASSETS ARE INTENDED SOLELY AS TECHNICAL SUPPORT INCIDENT TO THE SALE AND USE OF USG AND TREMCO PRODUCTS, AND NOT INTENDED TO BE A SUBSTITUTE FOR THE DESIGN REVIEW AND APPROVAL OF THE LICENSED DESIGN PROFESSIONALS FOR THE PROJECT. THESE MATERIALS MAY BE PRINTED AND/OR TRANSFERRED ELECTRONICALLY SOLELY AS NEEDED BY THE USER. BECAUSE CAD ELECTRONIC FILES AND BIM (BUILDING INFORMATION MODELING) FILES CAN BE MODIFIED BY OTHER PARTIES, WITHOUT NOTICE OR INDICATION OF SUCH MODIFICATIONS, MODIFICATION OF USG AND TREMCO PRODUCT CAD AND BIM FILES IS THE SOLE RESPONSIBILITY OF THE DESIGN PROFESSIONAL.

UL FWFO.EWS0017

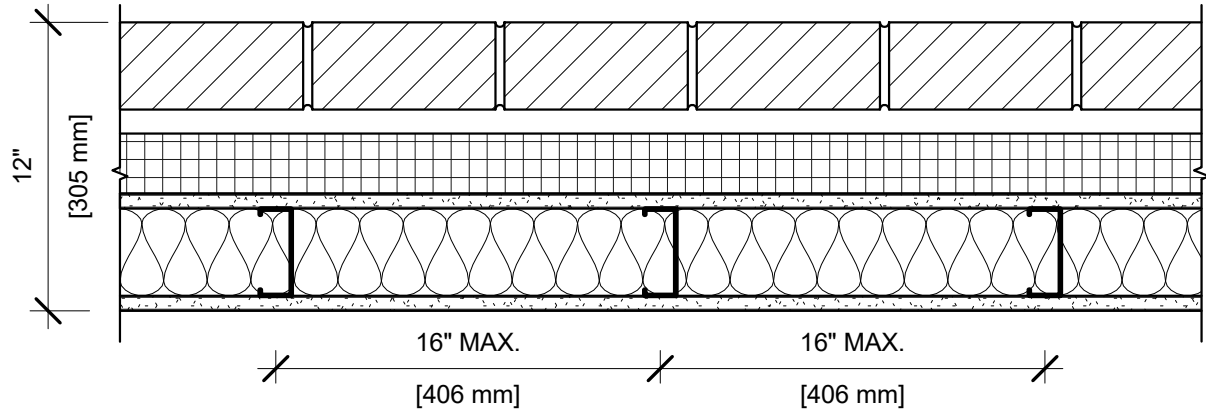
ISSUE RECORD:	
Revision	Date
2	06-04-2019

SHEET INFORMATION:

EWS0017

UL Design No. EWS0018

ASTM E331:	2 HR. @ 300 Pa (6.27 PSF)
ASTM E2357:	0.029 CFM/FT² (0.015 L/S•M²) @ 75 Pa (1.57 PSF) - CATEGORY 1
STC:	N/A
SOUND TEST:	N/A
SYSTEM THICKNESS:	12"



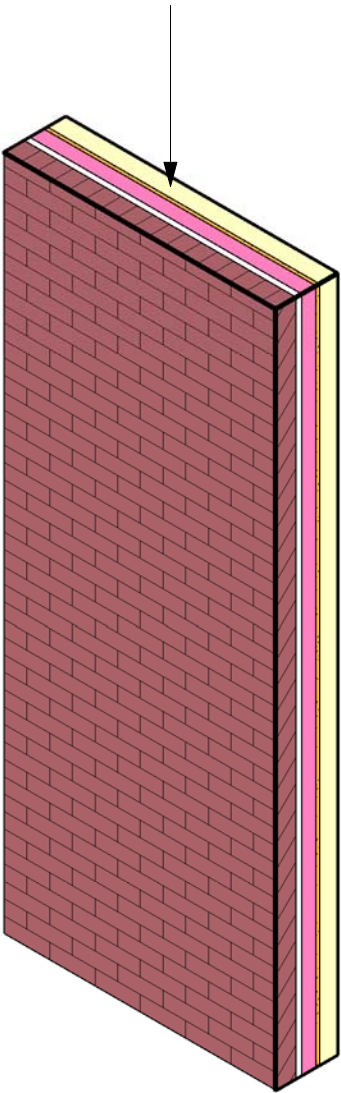
ASSEMBLY OPTIONS:

EXTERIOR BRICK VENEER:	4" NOM. CLAY BRICK, WITH STANDARD ANCHORS SPACED 24" O.C. MAX.
AIR CAVITY:	1" NOM. AIR GAP
FOAM INSULATION:	MAX. 2-1/2" THICK, EXTRUDED POLYSTYRENE INSULATION
BATT INSULATION:	MIN. 4" THICK WITHIN STUD CAVITY AT EACH FLOOR LINE WITH ANY STANDARD INSTALLATION METHOD
SEALANT (<i>NOT SHOWN</i>):	SEALANT APPLIED TO ALL EXTERIOR SHEATHING JOINTS AND SCREW HEADS (<i>TREMFLEX 834 OR DYMONIC 100</i>)
EXTERIOR GYPSUM SHEATHING (FWFX):	(1) LAYER 5/8" THICK EXTERIOR-GRADE GLASS MAT SHEATHING GYPSUM BOARD WITH AIR BARRIER SEALANT FACTORY APPLIED, JOINTS ORIENTED VERTICALLY OR HORIZONTALLY (<i>UL TYPES USGX, SECUROCK EXOAIR 430 PANEL</i>)
STEEL STUDS:	3-5/8" DEEP, 16 GA. SPACED 16" O.C. MAX.
INTERIOR GYPSUM BOARD (BWFR):	(1) LAYER 5/8" THICK GYPSUM BOARD, JOINTS ORIENTED VERTICALLY (<i>UL TYPE SCX</i>)

AT WINDOW OPENINGS
(NOT SHOWN ON
DETAIL):

STEEL LINTEL:	7" x 3/8" MIN. LINTEL TO EXTEND MIN. 8" BEYOND EACH SIDE OF THE WINDOW OPENING
BRICK:	4" NOM. CLAY BRICK INSTALLED LENGTH-WISE TO COMPLETELY COVER WINDOW OPENING OF BRICK VENEER AND EXTENDING MIN. 8" BEYOND EACH SIDE OF THE OPENING
SEALANT:	SEALANT APPLIED TO ALL EDGES OF WINDOW FLASHING MATERIAL TO ADHERE FLASHING TO GYPSUM SHEATHING (<i>TREMCO — SPECTREM 1</i>)
WINDOW FLASHING (<i>OPTIONAL</i>):	NOM. 6" WIDE EXTRUDED SILICONE RUBBER FLASHING ATTACHED TO GYPSUM SHEATHING WITH SEALANT (LISTED ABOVE) TO COMPLETELY FRAME WINDOW OPENING (<i>TREMCO — PROGLAZE ETA</i>)

REVIT SYSTEM FAMILY
(COPY & PASTE INTO YOUR REVIT PROJECT)



REMARKS:

- STUD SIZE IS MINIMUM UNLESS OTHERWISE STATED IN DESIGN.
- FOR THE MOST UP-TO-DATE INFORMATION OR ASSEMBLY OPTIONS, REFER TO THE UL FIRE RESISTANCE DIRECTORY.
- VISIT WWW.USG.COM FOR THE MOST UP-TO-DATE PRODUCT INFORMATION AND INSTALLATION INSTRUCTIONS.
- WALL THICKNESSES ARE INDICATED PER UL TEST ONLY.
- REFERENCE IBC AND LOCAL BUILDING CODES FOR MINIMUM STUD DEPTH AND INSULATION VALUES FOR EXTERIOR ASSEMBLIES.

USG

CGC

TREMCO

PERFORMANCE BUILT IN

USG Corporation
550 West Adams Street
Chicago, IL 60661 USA
www.usg.com
800.USG4YOU (847-4968)

Tremco Commercial Sealants & Waterproofing

3735 Green Road
Beechwood, OH 44122
Tremco Technical Support:
866.209.2404

DISCLAIMER:
THE USG AND TREMCO PRODUCT INFORMATION CONTAINED HEREIN IS INTENDED FOR USE AS PRODUCT REFERENCE MATERIAL BY ARCHITECTS, ENGINEERS, AND OTHER DESIGN PROFESSIONALS, CONTRACTORS, BUILDING CODE OFFICIALS, OR OTHER COMPETENT CONSTRUCTION INDUSTRY TRADE PROFESSIONALS HAVING AN INTEREST IN THE SELECTION, SPECIFICATION, AND USE OF PRODUCTS MANUFACTURED BY THE SUBSIDIARIES OF USG CORPORATION AND TREMCO. THESE ASSETS ARE INTENDED SOLELY AS TECHNICAL SUPPORT INCIDENT TO THE SALE AND USE OF USG AND TREMCO PRODUCTS, AND NOT INTENDED TO BE A SUBSTITUTE FOR THE DESIGN REVIEW AND APPROVAL OF THE LICENSED DESIGN PROFESSIONALS FOR THE PROJECT. THESE MATERIALS MAY BE PRINTED AND/OR TRANSFERRED ELECTRONICALLY SOLELY AS NEEDED BY THE USER. BECAUSE CAD ELECTRONIC FILES AND BIM (BUILDING INFORMATION MODELING) FILES CAN BE MODIFIED BY OTHER PARTIES, WITHOUT NOTICE OR INDICATION OF SUCH MODIFICATIONS, MODIFICATION OF USG AND TREMCO PRODUCT CAD AND BIM FILES IS THE SOLE RESPONSIBILITY OF THE DESIGN PROFESSIONAL.

ISSUE RECORD:	
Revision	Date
2	06-04-2019

SHEET INFORMATION:

EWS0018

UL FWFO.EWS0018

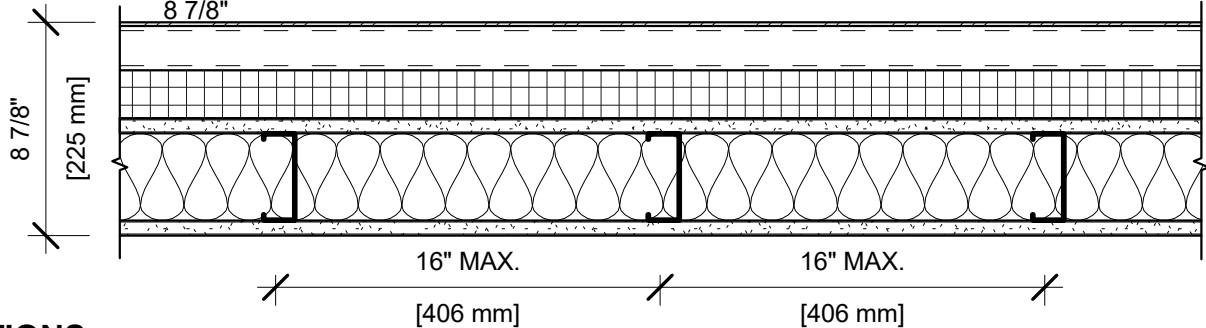
UL Design No. EWS0019

ASTM E331:
ASTM E2357:

2 HR. @ 300 Pa (6.27 PSF)
0.001 CFM/FT² (0.004 L/S•M²) @ 75 Pa (1.57 PSF) - CATEGORY 1, WHEN USING OPTIONAL EXTERIOR WALL SYSTEM COMPONENT COMBUSTIBLE AIR AND VAPOR BARRIER (*TREMCO — SPECTREM 1*)

STC:
SOUND TEST:
SYSTEM THICKNESS:

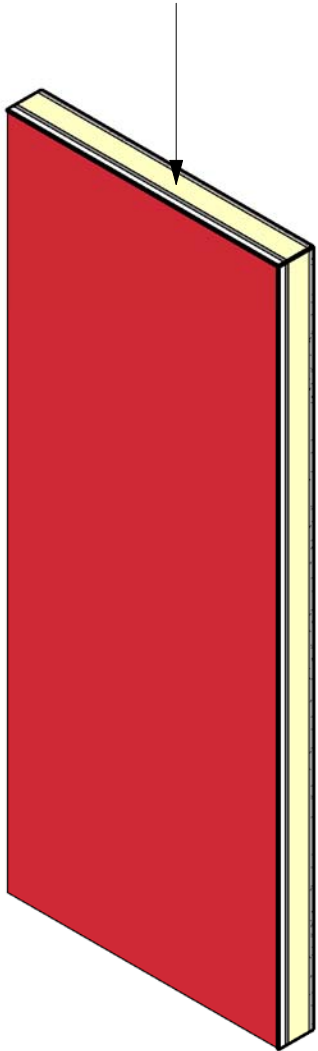
N/A
N/A
8 7/8"



ASSEMBLY OPTIONS:

EXTERIOR PANELS:	ALUMINUM COMPOSITE MATERIAL PANEL SYSTEM
MOUNTING SYSTEM:	EXTRUDED ALUMINUM MOUNTING SYSTEM SECURED TO Z CHANNELS, SPACED 16" O.C. MAX. BACKER EXTRUSIONS INSTALLED HORIZONTALLY AND LOCATED AT THE TOP AND BOTTOM OF EACH EXTERIOR PANEL FOR SECUREMENT OF EXTERIOR PANELS
STEEL Z CHANNEL (<i>NOT SHOWN</i>):	NOM. 1" X 2" X 1" Z CHANNEL, MIN. 16 GA., GALV. STEEL SECURED TO STEEL STUDS THROUGH SHEATHING PRIOR TO INSTALLATION OF FOAM INSULATION. INSTALLED HORIZONTALLY AT THE TOP AND BOTTOM OF EACH EXTERIOR PANEL
FOAM INSULATION:	NOM. 4' X 8' X MAX. 2" THICK FOIL-FACED POLYISOCYANURATE INSULATION
SEALANT (<i>NOT SHOWN</i>):	SEALANT APPLIED TO ALL EXTERIOR SHEATHING JOINTS
EXTERIOR WALL SYSTEM COMPONENT (<i>OPTIONAL, NOT SHOWN</i>) - COMBUSTIBLE AIR AND VAPOR BARRIER:	AS AN ALTERNATE TO JOINT SEALANT (LISTED ABOVE), SELF-ADHERED BARRIER APPLIED TO COVER JOINTS AND SCREW HEADS OF THE EXTERIOR GYPSUM SHEATHING (FWFX). MAY ALSO BE APPLIED TO ENTIRELY COVER THE EXTERIOR GYPSUM SHEATHING WITH A MIN. 2" VERTICAL OR HORIZONTAL OVERLAP BETWEEN LAYERS (<i>TREMCO - EXOAIR 110AT</i>)
EXTERIOR GYPSUM SHEATHING (FWFX):	(1) LAYER 5/8" THICK EXTERIOR-GRADE GLASS MAT SHEATHING GYPSUM BOARD WITH AIR BARRIER SEALANT FACTORY APPLIED, JOINTS ORIENTED VERTICALLY OR HORIZONTALLY (<i>UL TYPES USGX, SECUROCK EXOAIR 430 PANEL</i>)
STEEL STUDS:	3-5/8" DEEP, 16 GA. SPACED 16" O.C. MAX.
BATT INSULATION:	MIN. 4" THICK WITHIN STUD CAVITY AT EACH FLOOR LINE WITH ANY STANDARD INSTALLATION METHOD
INTERIOR GYPSUM BOARD (BWFR):	(1) LAYER 5/8" THICK GYPSUM BOARD, JOINTS ORIENTED VERTICALLY OR HORIZONTALLY (<i>UL TYPE SCX</i>)
AT WINDOW OPENINGS (NOT SHOWN ON DETAIL):	
STEEL FLASHING:	MIN. 22 GA. STEEL FORMED TO COMPLETELY LINE WINDOW OPENING AND OVERLAP ONTO BOTH SURFACES OF WALL ASSEMBLY 1/2" MIN.
SEALANT:	SEALANT APPLIED TO ALL EDGES OF WINDOW FLASHING MATERIAL TO ADHERE FLASHING TO GYPSUM SHEATHING AND USED TO ATTACH STIFFENERS TO BACK OF EXTERIOR PANELS (<i>TREMCO — SPECTREM 1</i>)
WINDOW FLASHING (<i>OPTONAL</i>):	NOM. 6" WIDE EXTRUDED SILICONE RUBBER FLASHING ATTACHED TO GYPSUM SHEATHING WITH SEALANT (LISTED ABOVE) TO COMPLETELY FRAME WINDOW OPENING (<i>TREMCO — PROGLAZE ETA</i>)

REVIT SYSTEM FAMILY
(COPY & PASTE INTO YOUR REVIT PROJECT)



REMARKS:

1.
- STUD SIZE IS MINIMUM UNLESS OTHERWISE STATED IN DESIGN.
2.
- FOR THE MOST UP-TO-DATE INFORMATION OR ASSEMBLY OPTIONS, REFER TO THE UL FIRE RESISTANCE DIRECTORY.
3.
- VISIT WWW.USG.COM FOR THE MOST UP-TO-DATE PRODUCT INFORMATION AND INSTALLATION INSTRUCTIONS.
4.
- WALL THICKNESSES ARE INDICATED PER UL TEST ONLY.
5.
- REFERENCE IBC AND LOCAL BUILDING CODES FOR MINIMUM STUD DEPTH AND INSULATION VALUES FOR EXTERIOR ASSEMBLIES.

USG

CGC

TREMCO

PERFORMANCE BUILT IN

USG Corporation

550 West Adams Street

Chicago, IL 60661 USA

www.usg.com

800.USG4YOU (847-4968)

Tremco Commercial Sealants & Waterproofing

3735 Green Road

Beechwood, OH 44122

Tremco Technical Support:

866.209.2404

DISCLAIMER:
THE USG AND TREMCO PRODUCT INFORMATION CONTAINED HEREIN IS INTENDED FOR USE AS PRODUCT REFERENCE MATERIAL BY ARCHITECTS, ENGINEERS, AND OTHER DESIGN PROFESSIONALS, CONTRACTORS, BUILDING CODE OFFICIALS, OR OTHER COMPETENT CONSTRUCTION INDUSTRY TRADE PROFESSIONALS HAVING AN INTEREST IN THE SELECTION, SPECIFICATION, AND USE OF PRODUCTS MANUFACTURED BY THE SUBSIDIARIES OF USG CORPORATION AND TREMCO. THESE ASSETS ARE INTENDED SOLELY AS TECHNICAL SUPPORT INCIDENT TO THE SALE AND USE OF USG AND TREMCO PRODUCTS, AND NOT INTENDED TO BE A SUBSTITUTE FOR THE DESIGN REVIEW AND APPROVAL OF THE LICENSED DESIGN PROFESSIONALS FOR THE PROJECT. THESE MATERIALS MAY BE PRINTED AND/OR TRANSFERRED ELECTRONICALLY SOLELY AS NEEDED BY THE USER. BECAUSE CAD ELECTRONIC FILES AND BIM (BUILDING INFORMATION MODELING) FILES CAN BE MODIFIED BY OTHER PARTIES, WITHOUT NOTICE OR INDICATION OF SUCH MODIFICATIONS, MODIFICATION OF USG AND TREMCO PRODUCT CAD AND BIM FILES IS THE SOLE RESPONSIBILITY OF THE DESIGN PROFESSIONAL.

ISSUE RECORD:	
Revision	Date
2	06-04-2019

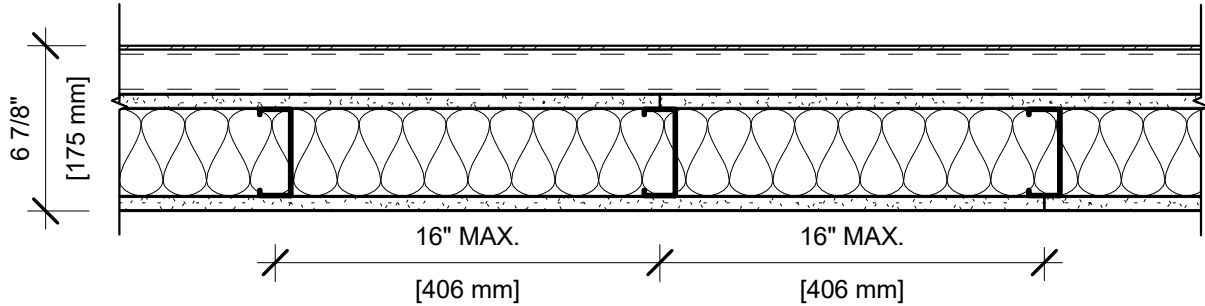
SHEET INFORMATION:

EWS0019

UL FWFO.EWS0019

UL Design No. EWS0020

ASTM E331:	2 HR. @ 300 Pa (6.27 PSF)
ASTM E2357:	0.029 CFM/FT² (0.015 L/S•M²) @ 75 Pa (1.57 PSF) - CATEGORY 1
STC:	N/A
SOUND TEST:	N/A
SYSTEM THICKNESS:	6-7/8"



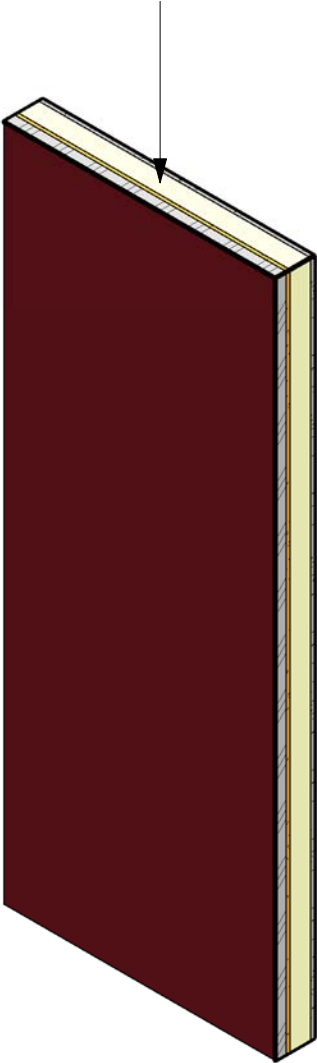
ASSEMBLY OPTIONS:

EXTERIOR PANELS:	ALUMINUM COMPOSITE MATERIAL PANEL SYSTEM
MOUNTING SYSTEM:	EXTRUDED ALUMINUM MOUNTING SYSTEM SECURED TO FURRING CHANNELS, SPACED 16" O.C. MAX. BACKER EXTRUSIONS INSTALLED VERTICALLY AT LOCATIONS CORRESPONDING TO VERTICAL EDGES OF EXTERIOR PANELS
SEALANT (NOT SHOWN):	SEALANT APPLIED TO ALL EXTERIOR SHEATHING JOINTS AND SCREW HEADS (TREM FLEX 834 OR DYMONIC 100)
EXTERIOR GYPSUM SHEATHING (FWFX):	(1) LAYER 5/8" THICK EXTERIOR-GRADE GLASS MAT SHEATHING GYPSUM BOARD WITH AIR BARRIER SEALANT FACTORY APPLIED, JOINTS ORIENTED VERTICALLY OR HORIZONTALLY (UL TYPES USGX, SECUROCK EXOAIR 430 PANEL)
STEEL STUDS:	3-5/8" DEEP, 16 GA. SPACED 16" O.C. MAX.
BATT INSULATION:	MIN. 4" THICK WITHIN STUD CAVITY AT EACH FLOOR LINE WITH ANY STANDARD INSTALLATION METHOD
INTERIOR GYPSUM BOARD (BWFR):	(1) LAYER 5/8" THICK GYPSUM BOARD, JOINTS ORIENTED VERTICALLY (UL TYPE SCX)

AT WINDOW OPENINGS (NOT SHOWN ON DETAIL):

STEEL FLASHING:	MIN. 22 GA. STEEL FORMED TO COMPLETELY LINE WINDOW OPENING AND OVERLAP ONTO BOTH SURFACES OF WALL ASSEMBLY 1/2" MIN.
SEALANT:	SEALANT APPLIED TO ALL EDGES OF WINDOW FLASHING MATERIAL TO ADHERE FLASHING TO GYPSUM SHEATHING AND USED TO ATTACH STIFFENERS TO BACK OF EXTERIOR PANELS (TREMCO — SPECTREM 1)
WINDOW FLASHING (OPTIONAL):	NOM. 6" WIDE EXTRUDED SILICONE RUBBER FLASHING ATTACHED TO GYPSUM SHEATHING WITH SEALANT (LISTED ABOVE) TO COMPLETELY FRAME WINDOW OPENING (TREMCO — PROGLAZE ETA)

REVIT SYSTEM FAMILY
(COPY & PASTE INTO YOUR REVIT PROJECT)



REMARKS:

- STUD SIZE IS MINIMUM UNLESS OTHERWISE STATED IN DESIGN.
- FOR THE MOST UP-TO-DATE INFORMATION OR ASSEMBLY OPTIONS, REFER TO THE UL FIRE RESISTANCE DIRECTORY.
- VISIT WWW.USG.COM FOR THE MOST UP-TO-DATE PRODUCT INFORMATION AND INSTALLATION INSTRUCTIONS.
- WALL THICKNESSES ARE INDICATED PER UL TEST ONLY.
- REFERENCE IBC AND LOCAL BUILDING CODES FOR MINIMUM STUD DEPTH AND INSULATION VALUES FOR EXTERIOR ASSEMBLIES.



PERFORMANCE BUILT IN

USG Corporation

550 West Adams Street

Chicago, IL 60661 USA

www.usg.com

800.USG4YOU (847-4968)

Tremco Commercial Sealants & Waterproofing

3735 Green Road

Beechwood, OH 44122

Tremco Technical Support:

866.209.2404

DISCLAIMER:
THE USG AND TREMCO PRODUCT INFORMATION CONTAINED HEREIN IS INTENDED FOR USE AS PRODUCT REFERENCE MATERIAL BY ARCHITECTS, ENGINEERS, AND OTHER DESIGN PROFESSIONALS, CONTRACTORS, BUILDING CODE OFFICIALS, OR OTHER COMPETENT CONSTRUCTION INDUSTRY TRADE PROFESSIONALS HAVING AN INTEREST IN THE SELECTION, SPECIFICATION, AND USE OF PRODUCTS MANUFACTURED BY THE SUBSIDIARIES OF USG CORPORATION AND TREMCO. THESE ASSETS ARE INTENDED SOLELY AS TECHNICAL SUPPORT INCIDENT TO THE SALE AND USE OF USG AND TREMCO PRODUCTS, AND NOT INTENDED TO BE A SUBSTITUTE FOR THE DESIGN REVIEW AND APPROVAL OF THE LICENSED DESIGN PROFESSIONALS FOR THE PROJECT. THESE MATERIALS MAY BE PRINTED AND/OR TRANSFERRED ELECTRONICALLY SOLELY AS NEEDED BY THE USER. BECAUSE CAD ELECTRONIC FILES AND BIM (BUILDING INFORMATION MODELING) FILES CAN BE MODIFIED BY OTHER PARTIES, WITHOUT NOTICE OR INDICATION OF SUCH MODIFICATIONS, MODIFICATION OF USG AND TREMCO PRODUCT CAD AND BIM FILES IS THE SOLE RESPONSIBILITY OF THE DESIGN PROFESSIONAL.

UL FWFO.EWS0020

ISSUE RECORD:	
Revision	Date
2	06-04-2019

SHEET INFORMATION:

EWS0020