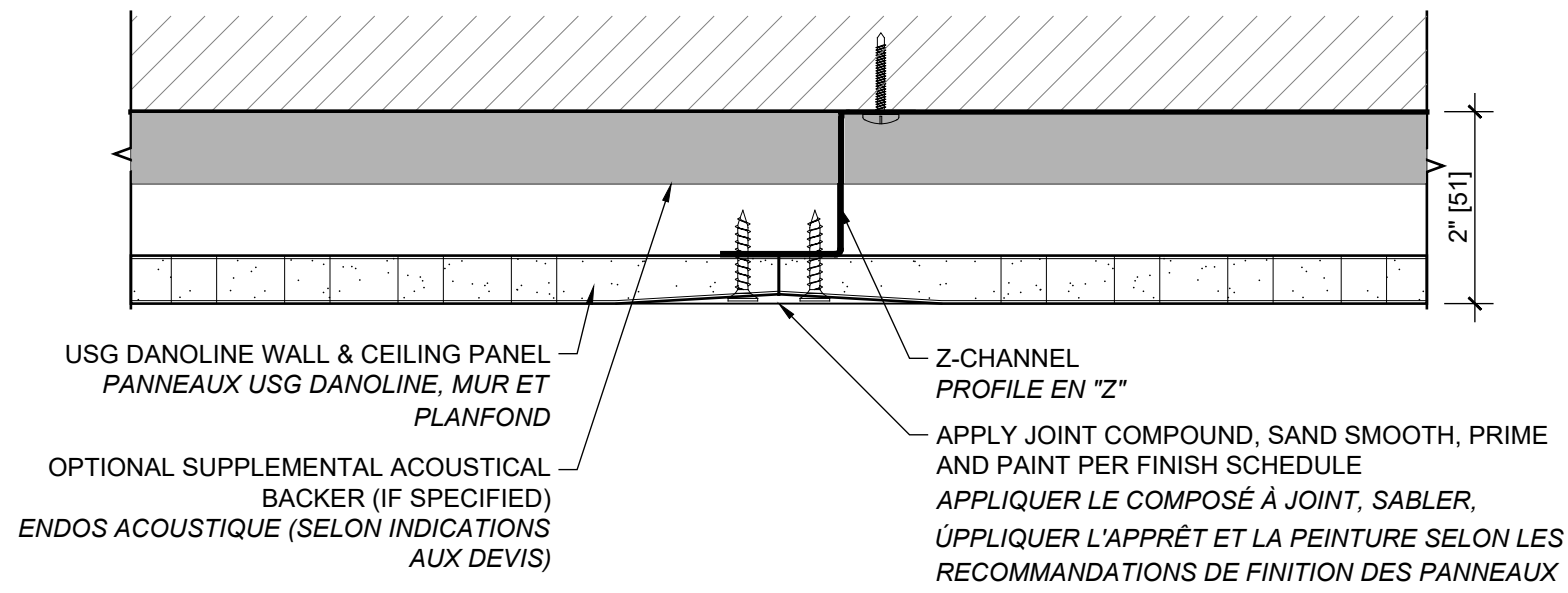
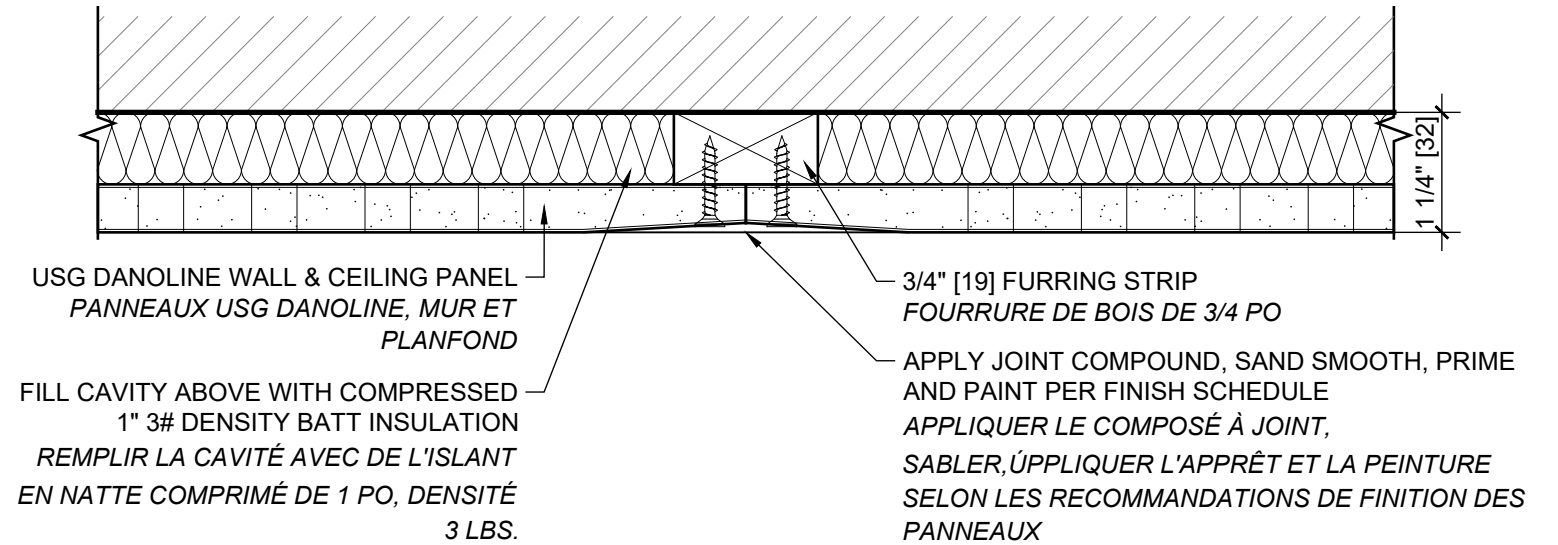


2 **INSTALLATION DIRECT SUR FOURRURE MÉTALLIQUE**
DIRECT MOUNT - HAT CHANNEL
 SCALE: 6" = 1'-0"



1 **INSTALLATION DIRECT SUR PROFILE EN "Z"**
DIRECT MOUNT - Z-CHANNEL
 SCALE: 6" = 1'-0"

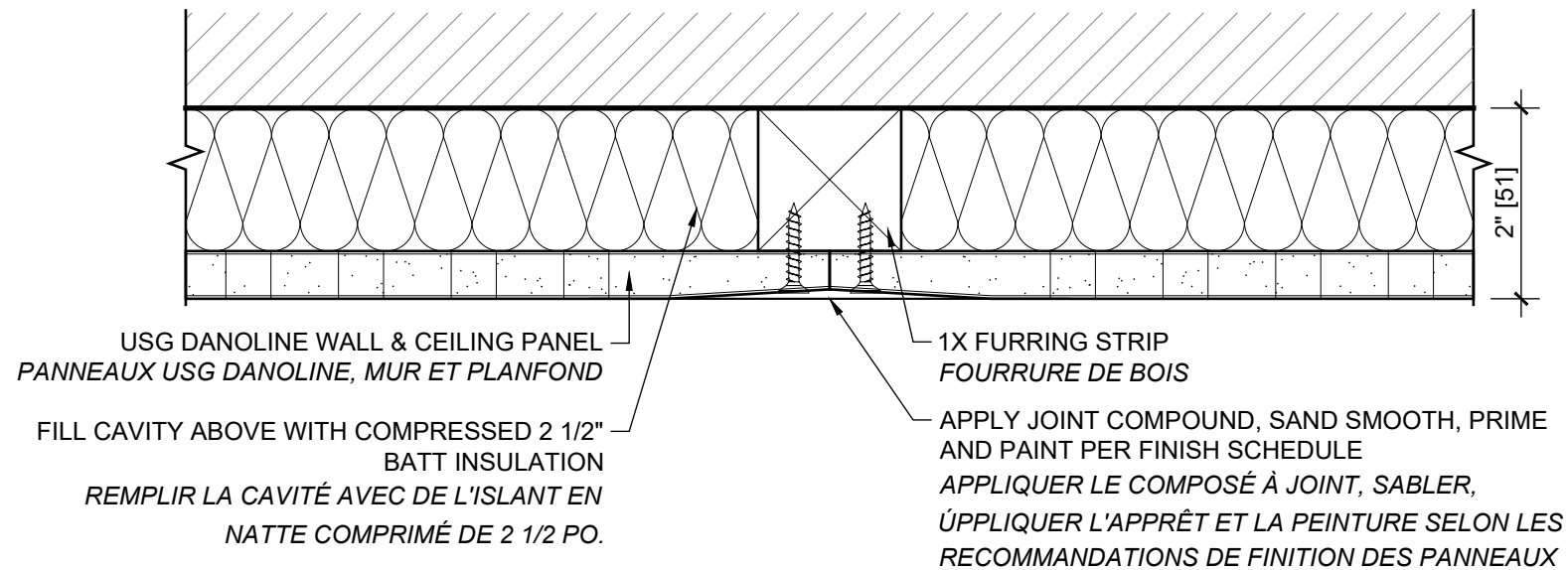


INSTALLATION DIRECT C-20

4

DIRECT MOUNT C-20

SCALE: 6" = 1'-0"

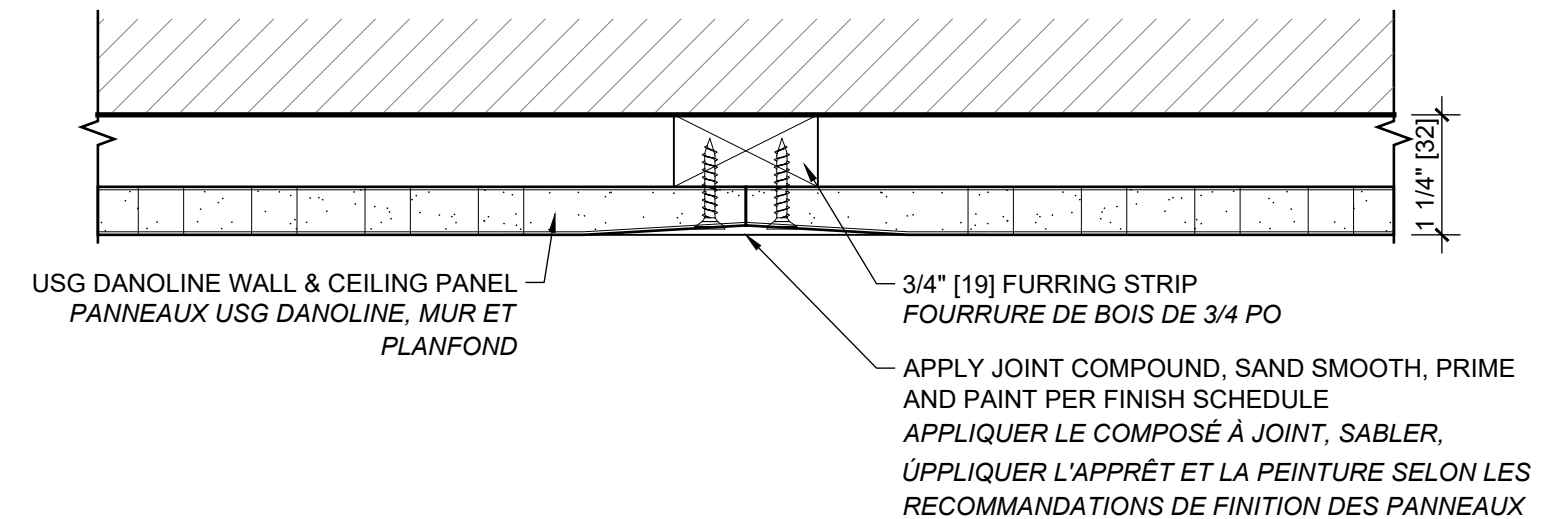


INSTALLATION DIRECT C-40

5

DIRECT MOUNT C-40

SCALE: 6" = 1'-0"

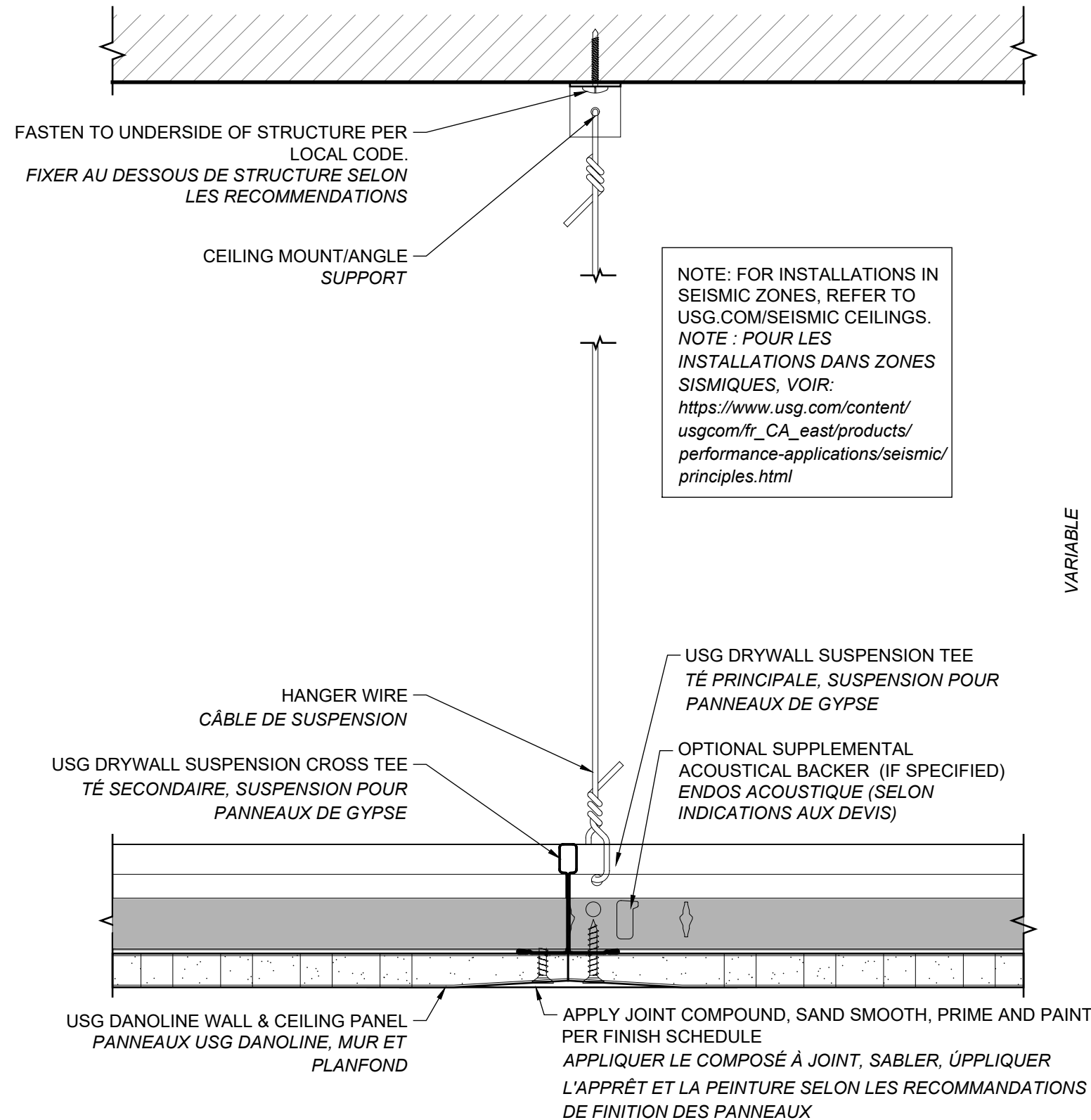


INSTALLATION DIRECT D-20

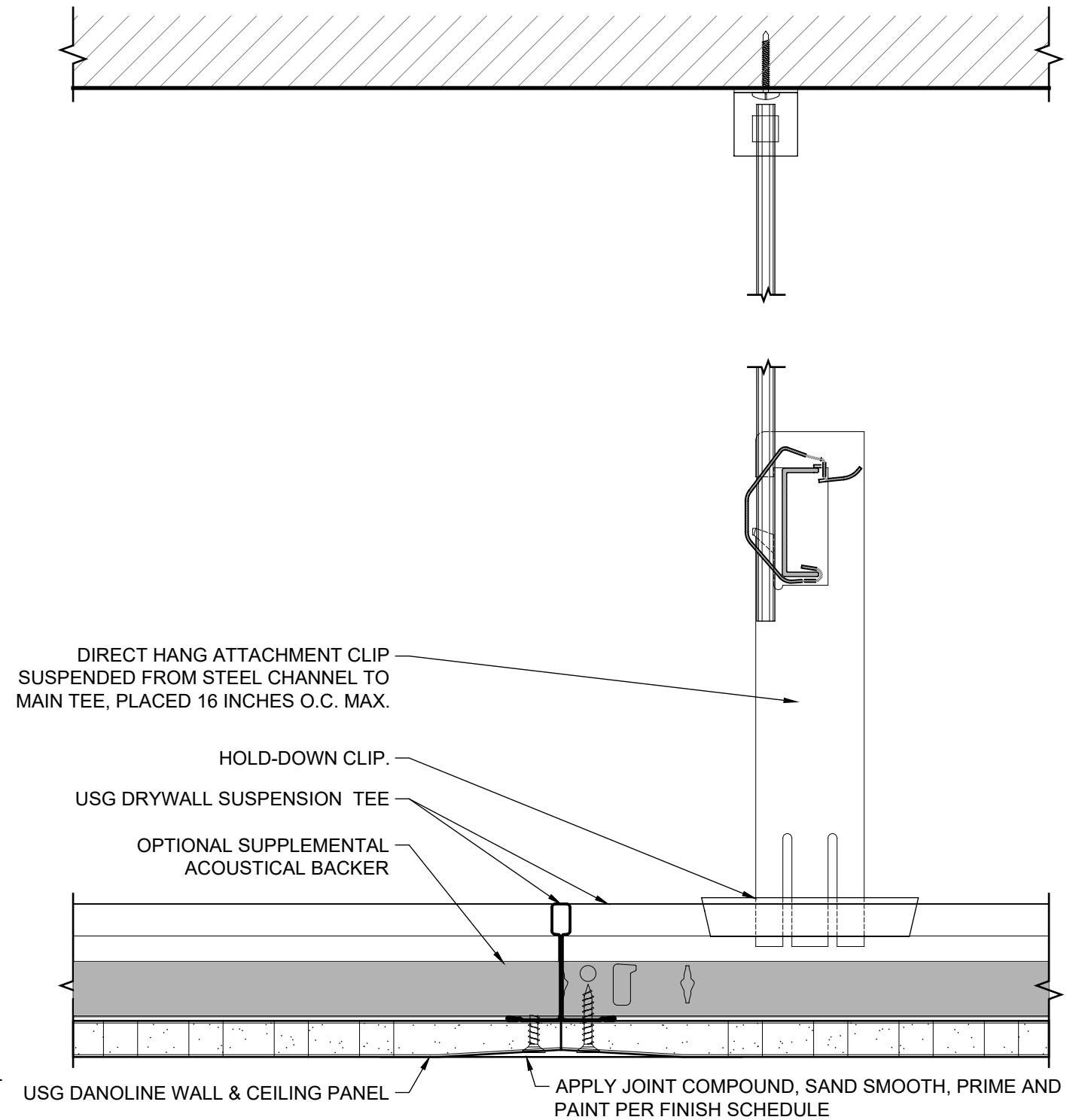
3

DIRECT MOUNT D-20

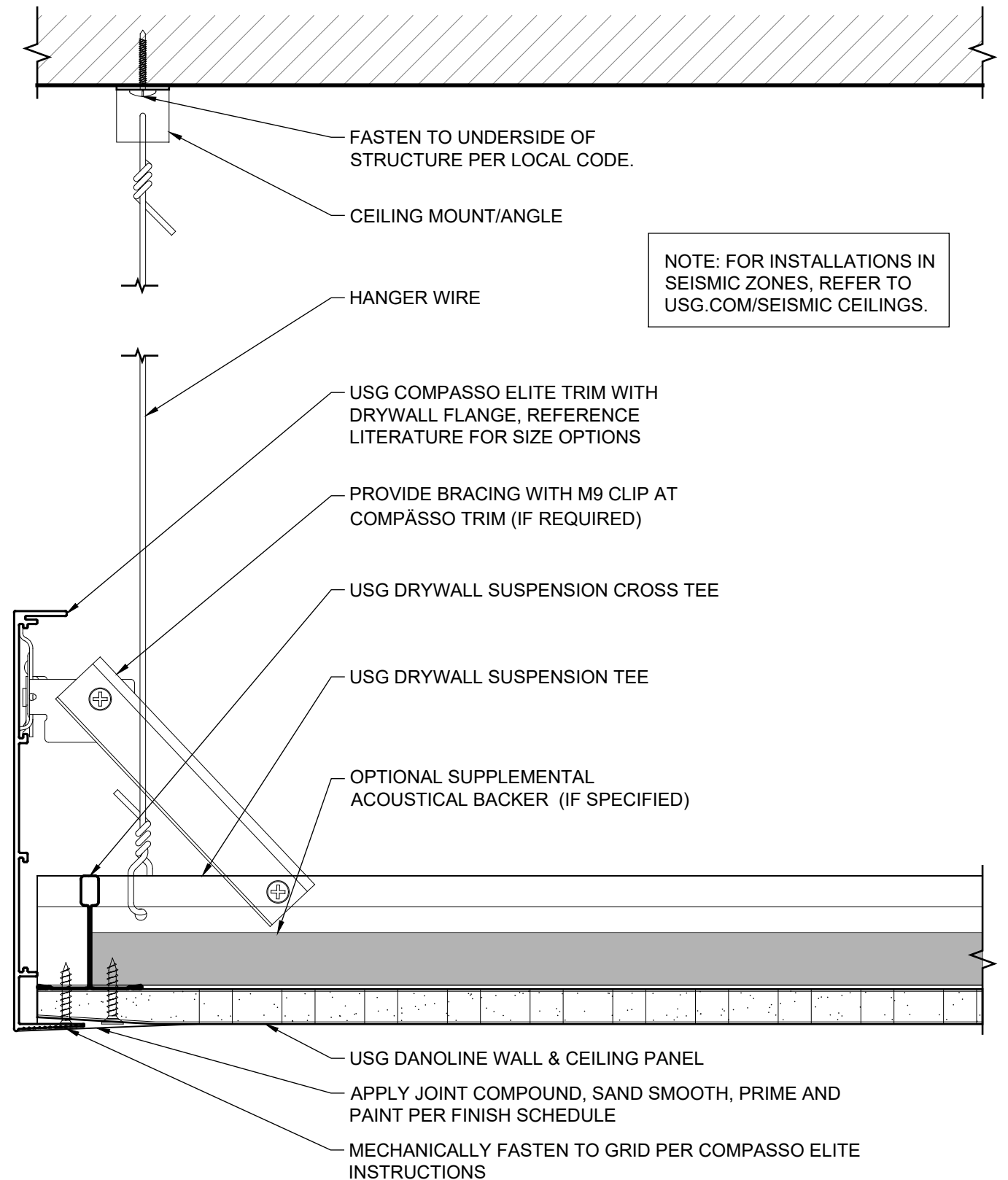
SCALE: 6" = 1'-0"



2 **SUSPENSION POUR PANNEAUX DE GYPSE**
DRYWALL SUSPENSION
SCALE: 6" = 1'-0"



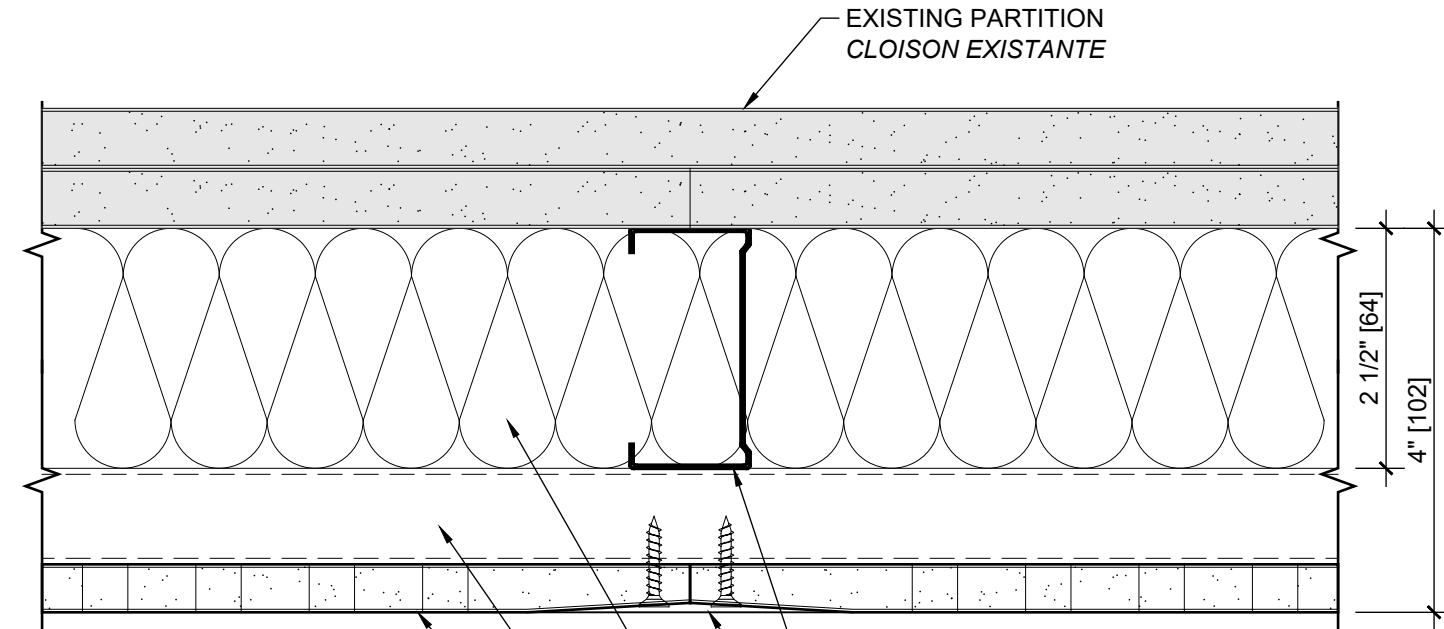
1 **MOUNTING C-40**
SCALE: 6" = 1'-0"



3

DRYWALL SUSPENSION - TRIM

SCALE: 6" = 1'-0"



EXISTING PARTITION
CLOISON EXISTANTE

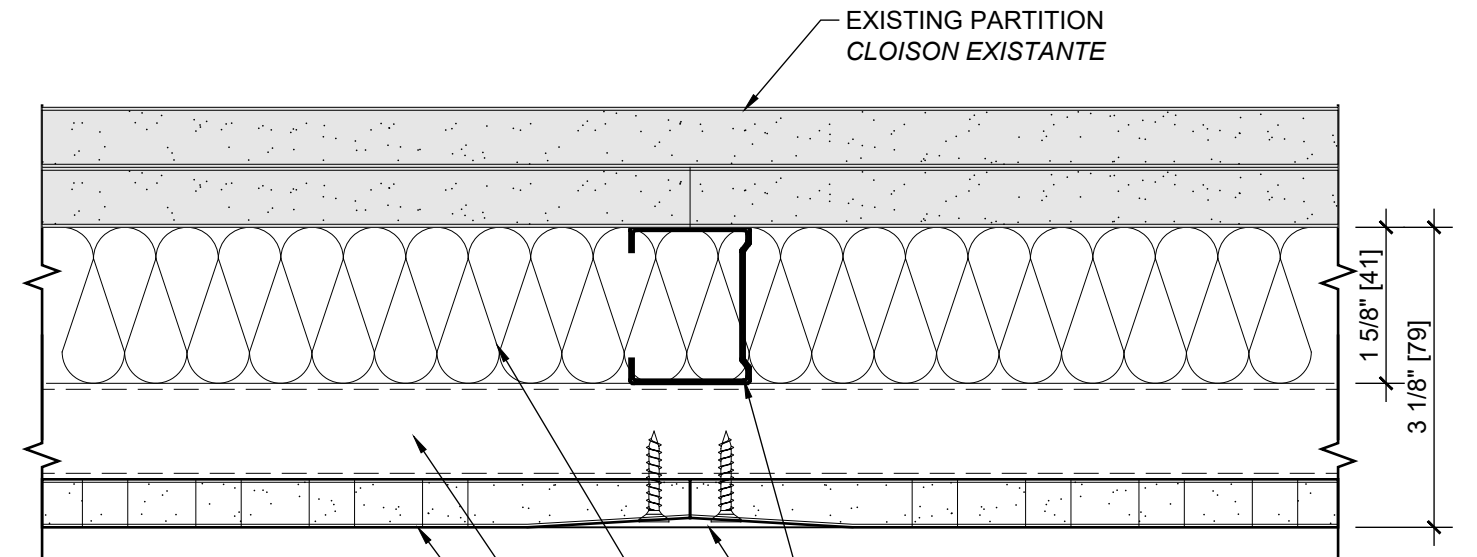
2 1/2" STEEL STUD
MONTANT D'ACIER 2 1/2 PO

APPLY JOINT COMPOUND, SAND SMOOTH, PRIME AND
PAINT PER FINISH SCHEDULE
APPLIQUER LE COMPOSÉ À JOINT, SABLER, ÜPPLIQUER
L'APPRÊT ET LA PEINTURE SELON LES
RECOMMANDATIONS DE FINITION DES PANNEAUX

FILL CAVITY ABOVE WITH COMPRESSED 2 1/2" BATT INSULATION
REEMPLIR LA CAVITÉ AVEC DE L'ISLANT EN NATTE COMPRIMÉ
DE 2 1/2 PO.

HAT OR Z-CHANNEL PROFILE EN "Z"

USG DANOLINE WALL & CEILING PANEL
PANNEAUX USG DANOLINE, MUR ET PLANFOND



EXISTING PARTITION
CLOISON EXISTANTE

1 5/8" STEEL STUD
MONTANT D'ACIER 1 5/8 PO

APPLY JOINT COMPOUND, SAND SMOOTH, PRIME AND
PAINT PER FINISH SCHEDULE
APPLIQUER LE COMPOSÉ À JOINT, SABLER,
ÜPPLIQUER L'APPRÊT ET LA PEINTURE SELON LES
RECOMMANDATIONS DE FINITION DES PANNEAUX

FILL CAVITY ABOVE WITH COMPRESSED 2 1/2" BATT
INSULATION
REEMPLIR LA CAVITÉ AVEC DE L'ISLANT EN NATTE
COMPRIMÉ DE 2 1/2 PO.

HAT OR Z-CHANNEL PROFILE EN "Z"

USG DANOLINE WALL & CEILING PANEL
PANNEAUX USG DANOLINE, MUR ET PLANFOND

INSTALLATION MURALE W-65

WALL MOUNT W-65

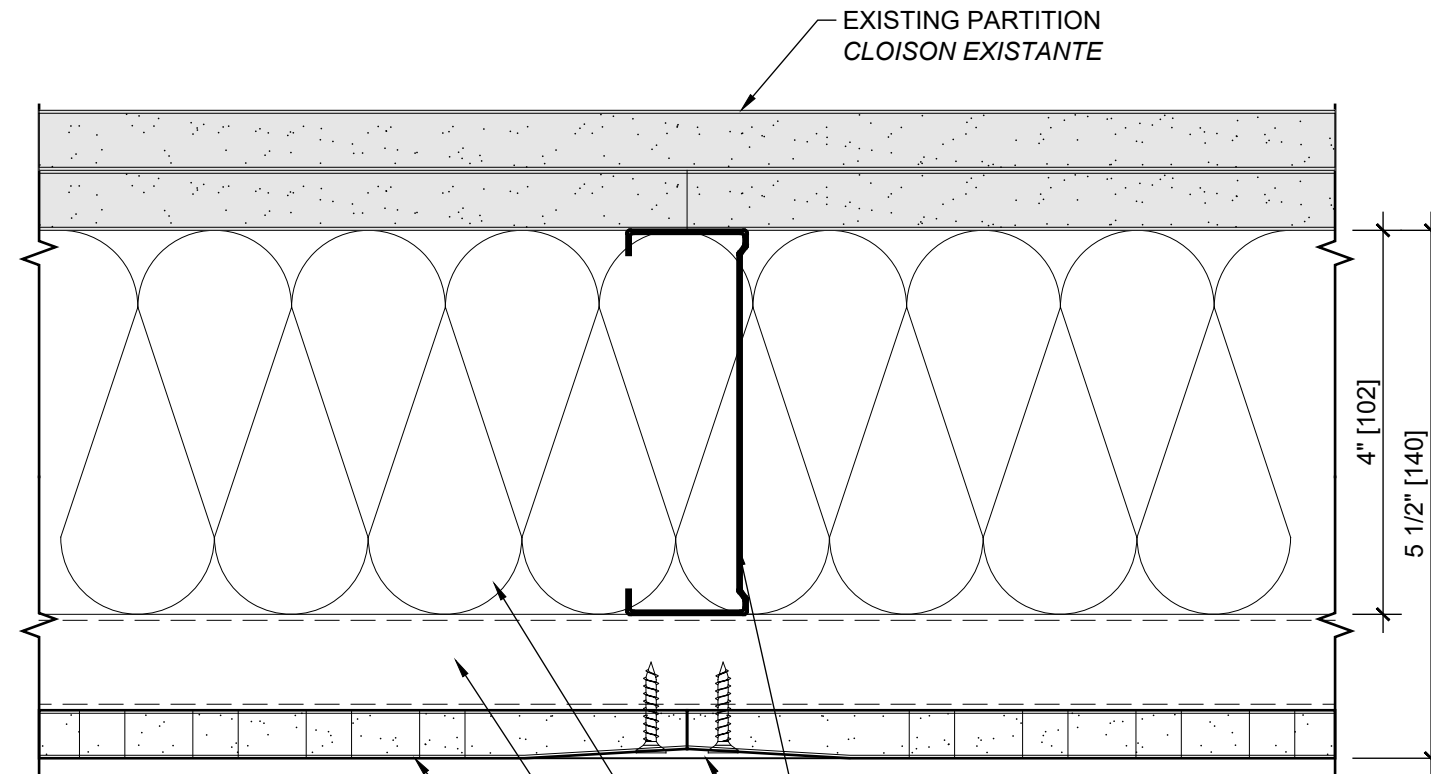
SCALE: 6" = 1'-0"

INSTALLATION MURALE W-40

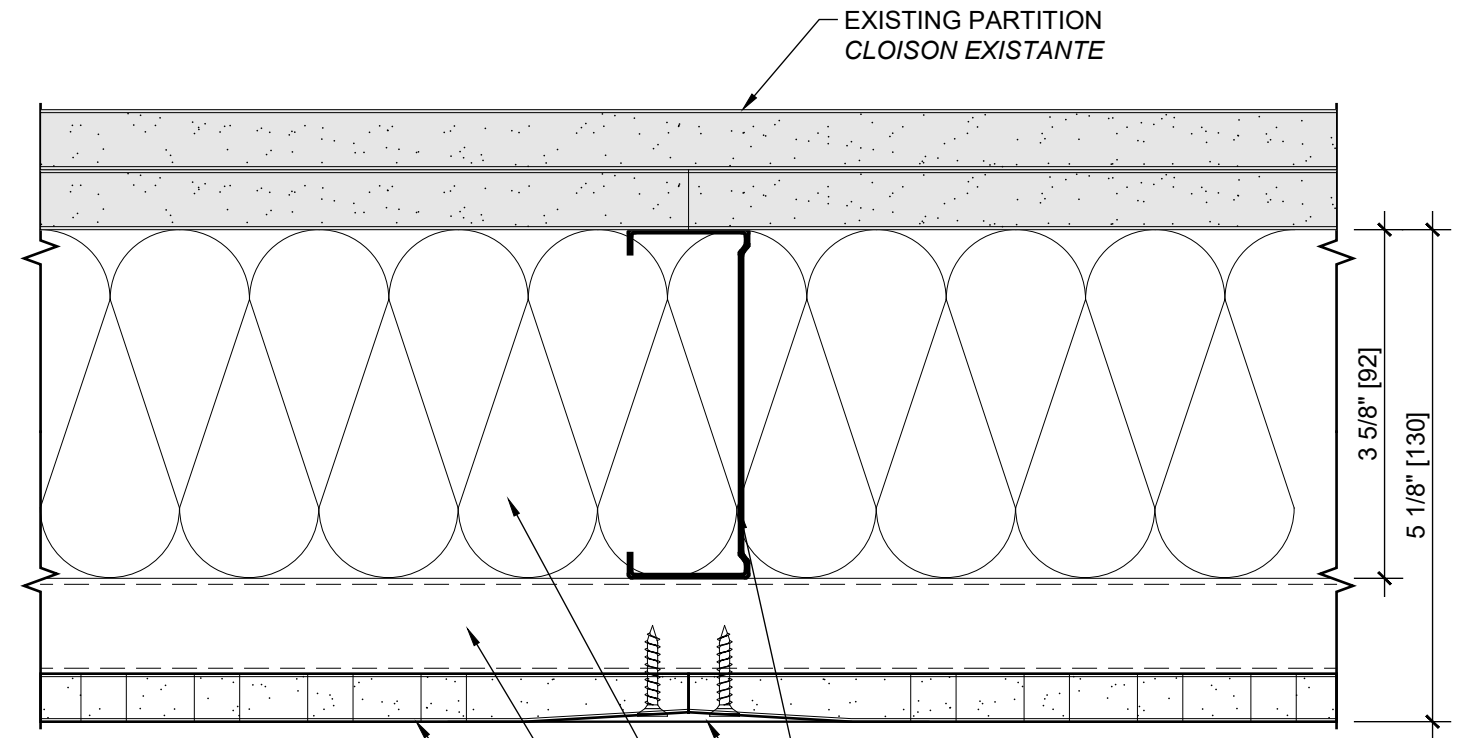
WALL MOUNT W-40

SCALE: 6" = 1'-0"

NOTE: USG DANOLINE WALL AND CEILING PANELS ARE A FINISH
MATERIAL AND ARE TO BE APPLIED IN FRONT OF EXISTING PARTITIONS.



- 4" STEEL STUD
MONTANT D'ACIER 4 PO
- APPLY JOINT COMPOUND, SAND SMOOTH, PRIME AND PAINT
PER FINISH SCHEDULE
APPLIQUER LE COMPOSÉ À JOINT, SABLER, ÚPPLIQUER
L'APPRÊT ET LA PEINTURE SELON LES RECOMMANDATIONS
DE FINITION DES PANNEAUX
- FILL CAVITY ABOVE WITH COMPRESSED 4" BATT INSULATION
REEMPLIR LA CAVITÉ AVEC DE L'ISLANT EN NATTE COMPRIMÉ
DE 4 PO.
- HAT OR Z-CHANNEL PROFILE EN "Z"
- USG DANOLINE WALL & CEILING PANEL
PANNEAUX USG DANOLINE, MUR ET PLANFOND



- 3 5/8" STEEL STUD
MONTANT D'ACIER 3 5/8 PO
- APPLY JOINT COMPOUND, SAND SMOOTH, PRIME
AND PAINT PER FINISH SCHEDULE
APPLIQUER LE COMPOSÉ À JOINT, SABLER,
ÚPPLIQUER L'APPRÊT ET LA PEINTURE SELON LES
RECOMMANDATIONS DE FINITION DES PANNEAUX
- FILL CAVITY ABOVE WITH COMPRESSED 4" BATT
INSULATION
REEMPLIR LA CAVITÉ AVEC DE L'ISLANT EN NATTE
COMPRIMÉ DE 4 PO.
- HAT OR Z-CHANNEL PROFILE EN "Z"
- USG DANOLINE WALL & CEILING PANEL
PANNEAUX USG DANOLINE, MUR ET PLANFOND

INSTALLATION MURALE W-105

4 WALL MOUNT W-105

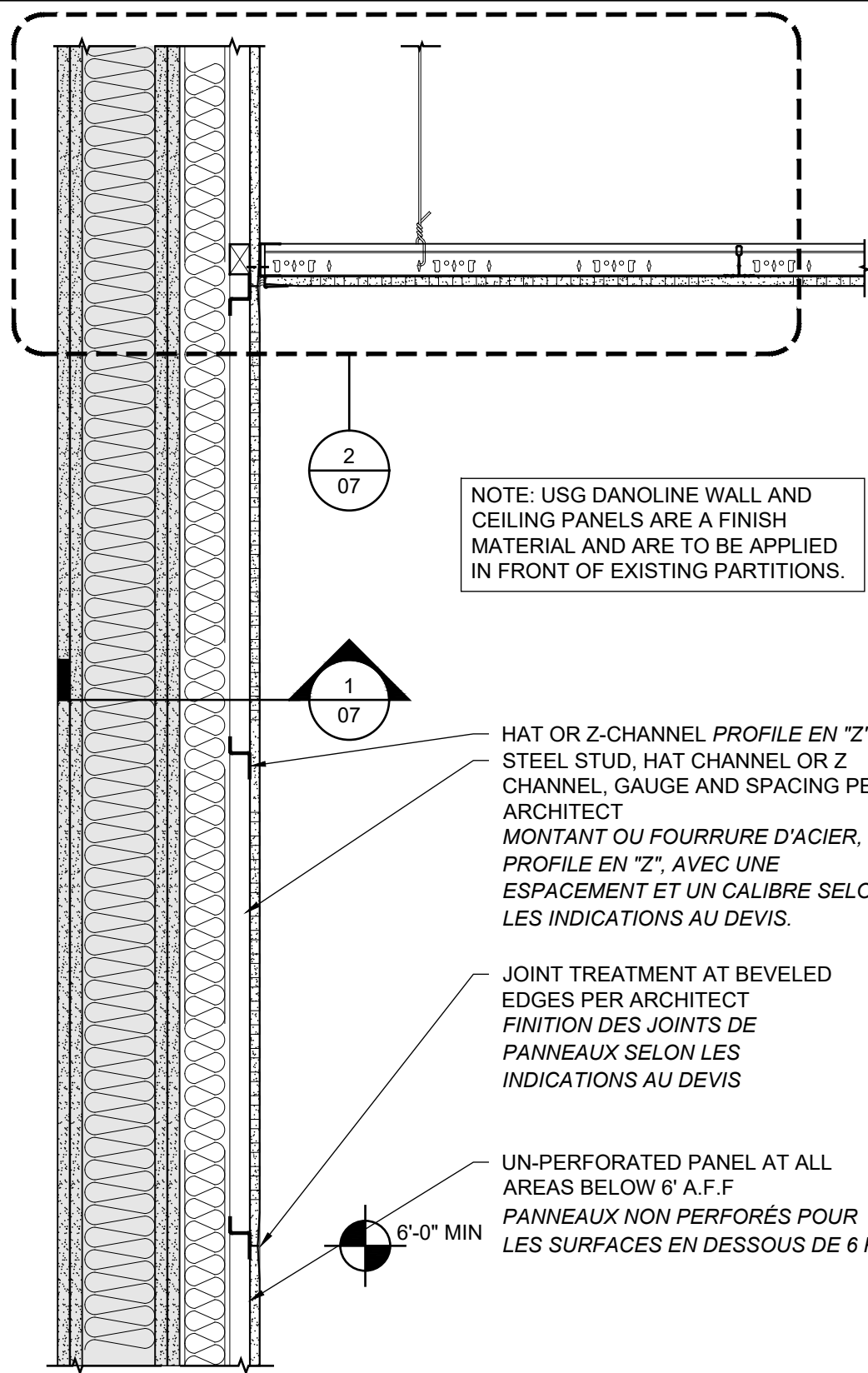
SCALE: 6" = 1'-0"

INSTALLATION MURALE W-92

3 WALL MOUNT W-92

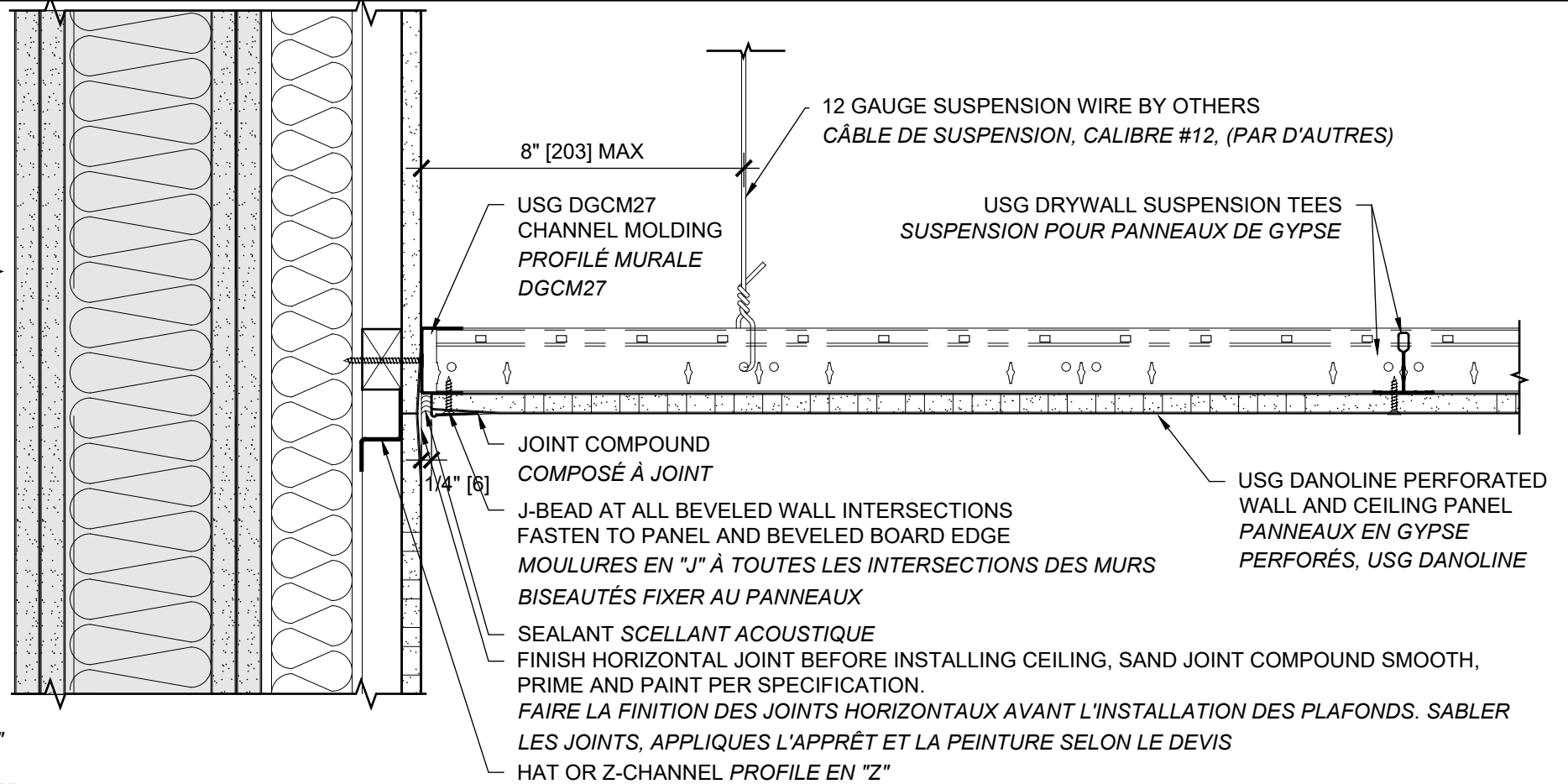
SCALE: 6" = 1'-0"

NOTE: USG DANOLINE WALL AND CEILING PANELS ARE A FINISH MATERIAL AND ARE TO BE APPLIED IN FRONT OF EXISTING PARTITIONS.



COUPE DE MUR - VERTICALE
VERTICAL WALL SECTION

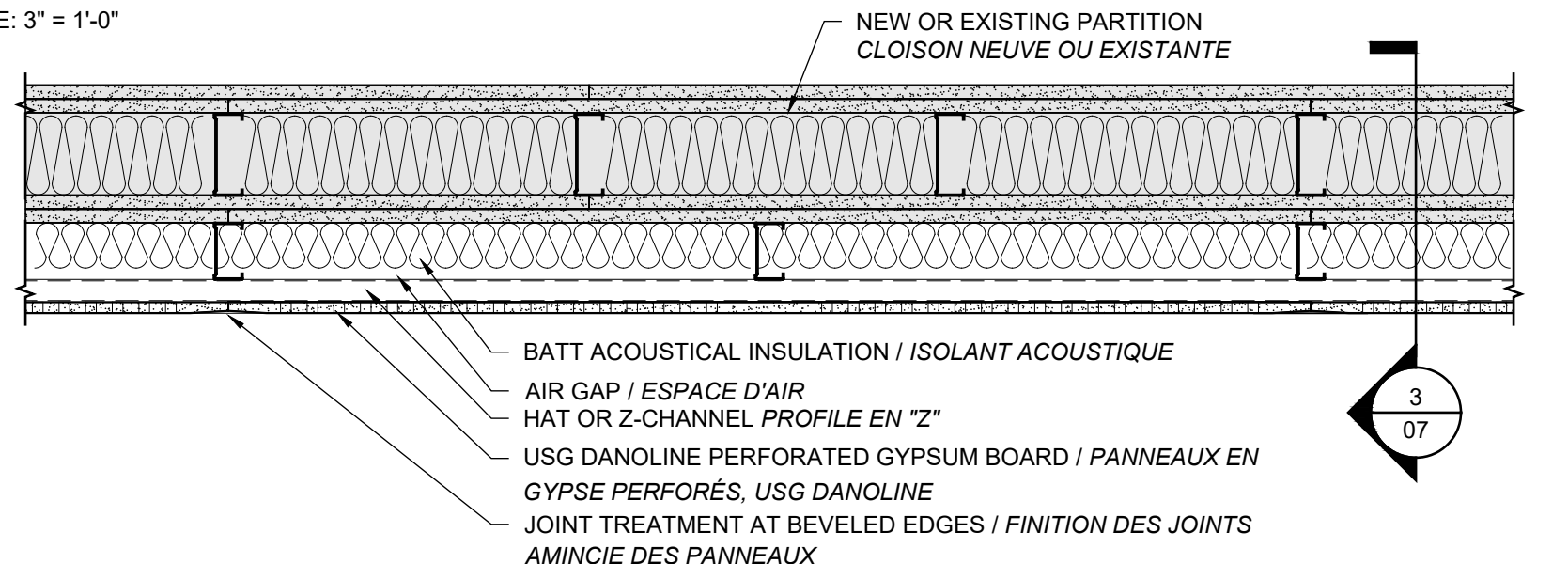
SCALE: 1 1/2" = 1'-0"



DÉTAILS DE JONCTION - MURS ET PLAFONDS

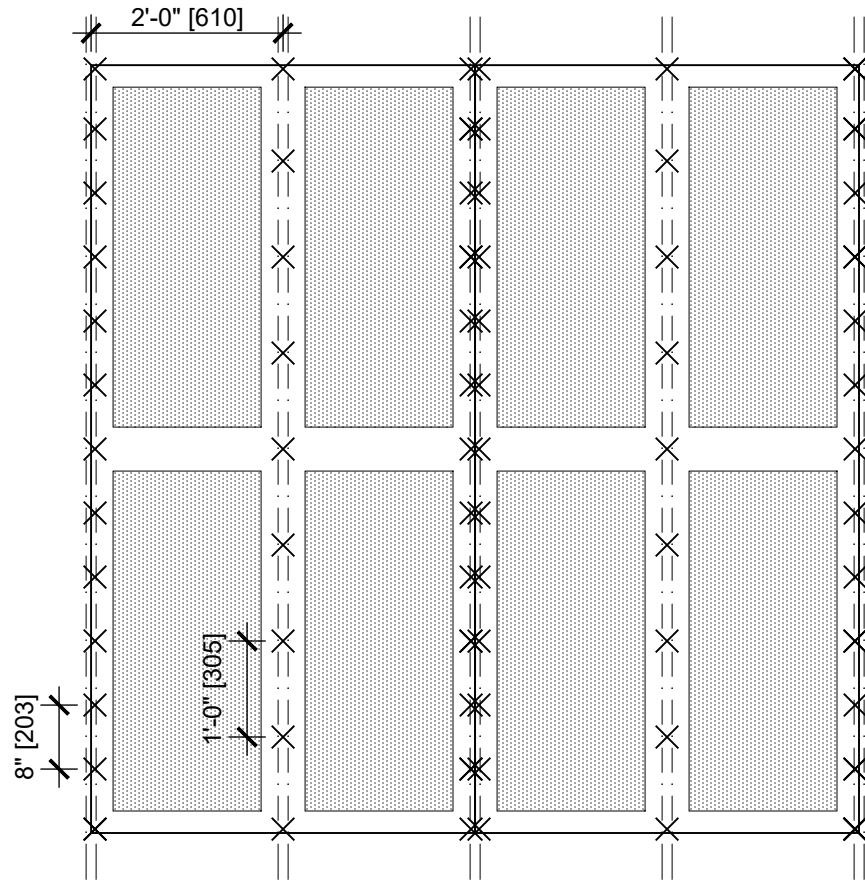
WALL TO CEILING DETAIL

SCALE: 3" = 1'-0"

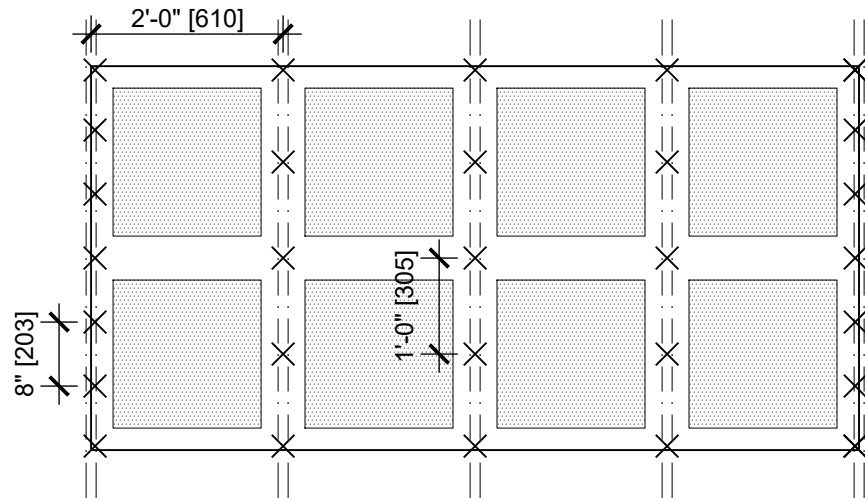


COUPE DE MUR - HORIZONTALE
HORIZONTAL WALL SECTION

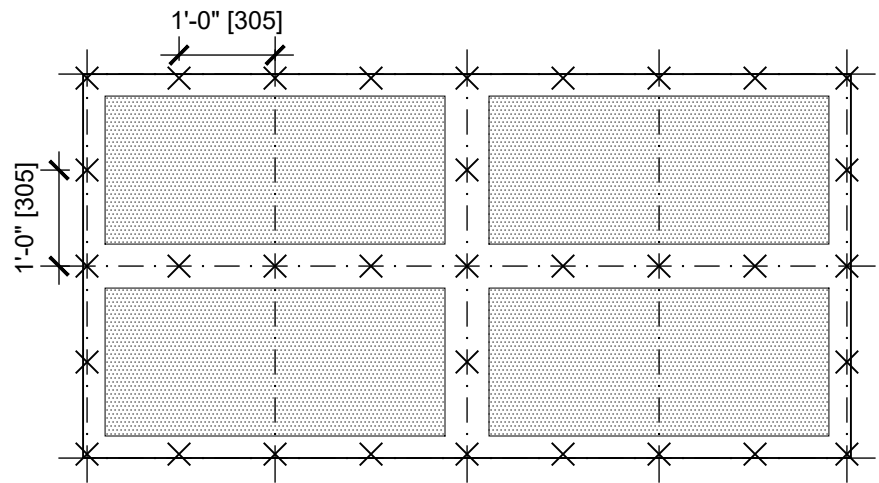
SCALE: 1 1/2" = 1'-0"



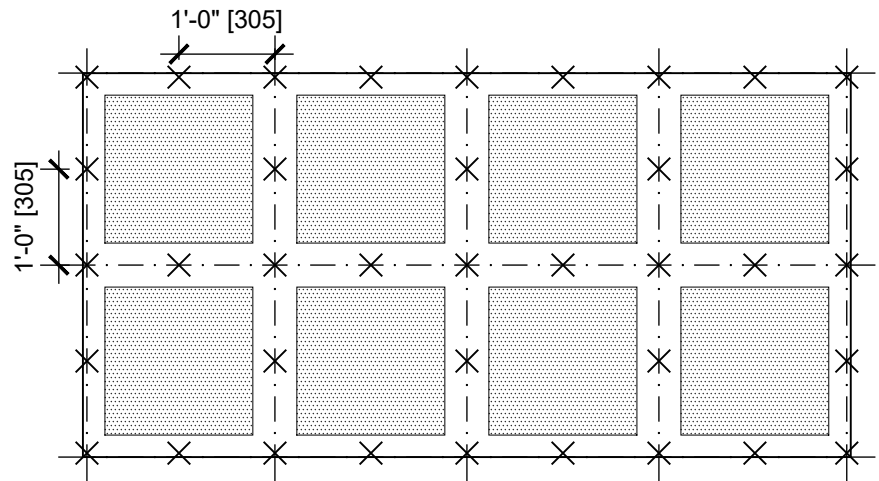
5 DÉTAILS D'OSSATURE À 2 Pl. C.-À C.
WALL FRAMING @ 2'-0" O.C.
Scale: 1/2" = 1'-0"



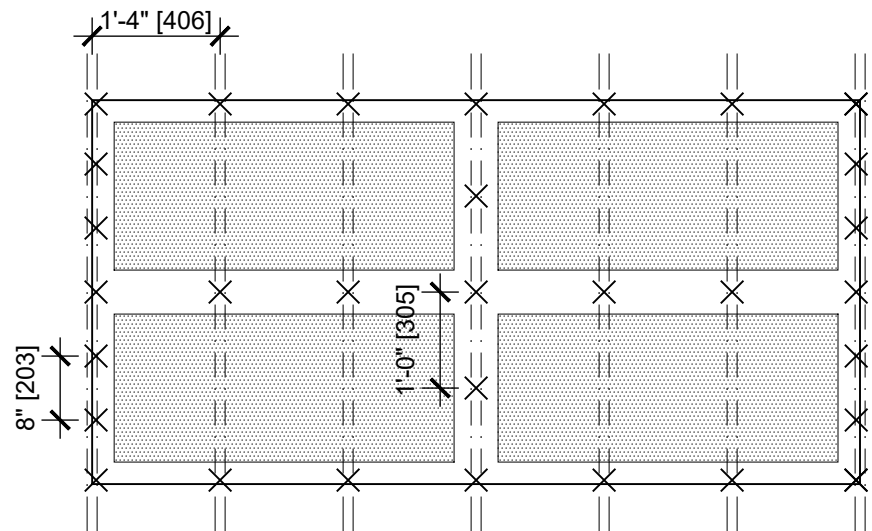
4 DÉTAILS D'OSSATURE À 2 Pl. C.-À C.
WALL FRAMING @ 2'-0" O.C.
Scale: 1/2" = 1'-0"



3 FIXATION DES PANNEAUX SUR LE SYSTÈME DE SUSPENSION POUR PANNEAUX DE GYPSE
PANEL ATTACHMENT FOR DRYWALL SUSPENSION
Scale: 1/2" = 1'-0"



2 FIXATION DES PANNEAUX SUR LE SYSTÈME DE SUSPENSION POUR PANNEAUX DE GYPSE
PANEL ATTACHMENT FOR DRYWALL SUSPENSION
Scale: 1/2" = 1'-0"



1 DÉTAILS D'OSSATURE À 1 Pl. 4PO C.-À C.
WALL FRAMING @ 1'-4" O.C.
Scale: 1/2" = 1'-0"